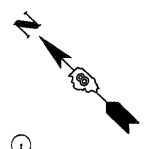
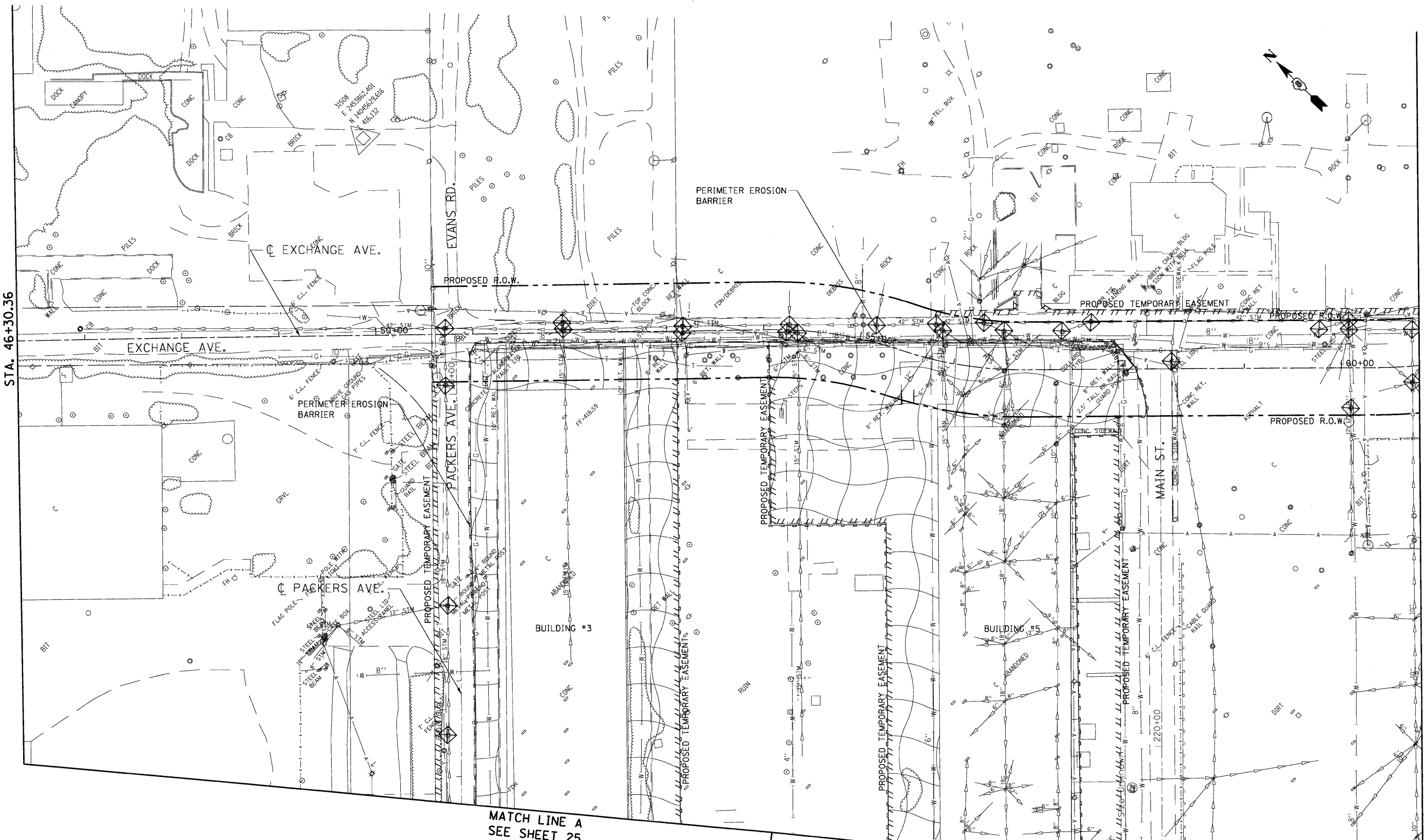


\\S08C0N1\99\HUTTEL.DGN, \\S08C0N1\99\LEGEN.DGN, \\S08C0N1\99\LAYOUT.DGN, \\S08C0N1\99\LEGEND.DGN, \\S08C0N1\2A-EROSION.DGN, \\S08C0N1\2A-EROSION.DGN, \\S08C0N1\2A-EROSION.DGN, \\S08C0N1\2A-EROSION.DGN, \\S08C0N1\2A-EROSION.DGN, \\S08C0N1\2A-EROSION.DGN
 FILE: \\S08C0N1\99\HUTTEL.DGN, \\S08C0N1\99\LEGEN.DGN, \\S08C0N1\99\LAYOUT.DGN, \\S08C0N1\99\LEGEND.DGN, \\S08C0N1\2A-EROSION.DGN, \\S08C0N1\2A-EROSION.DGN, \\S08C0N1\2A-EROSION.DGN, \\S08C0N1\2A-EROSION.DGN, \\S08C0N1\2A-EROSION.DGN, \\S08C0N1\2A-EROSION.DGN



EROSION CONTROL LEGEND

- INLET FILTERS
- STABILIZED CONSTRUCTION ENTRANCE
- PERIMETER EROSION BARRIER (PEB)
DURING CONSTRUCTION TEMPORARY EROSION CONTROL SEEDING SHALL BE PLACED.
IN ADDITION, AT CONCLUSION OF CONSTRUCTION
- SEEDING, CLASS 7
- MULCH, METHOD 2

MATCH LINE A
SEE SHEET 25

MATCH LINE B
SEE SHEET 26

	TENG & ASSOCIATES, INC. ENGINEERS, ARCHITECTS & PLANNERS CHICAGO, ILLINOIS	USER NAME = *USER*	DESIGNED - JB DRAWN - JB CHECKED - ACL DATE - 05/15/09	REVISED - REVISED - REVISED - REVISED -	STATE OF ILLINOIS DEPARTMENT OF TRANSPORTATION I-70 CONNECTION	EROSION AND SEDIMENT CONTROL PLAN EXCHANGE AVENUE	F.A.P. RTE. 998	SECTION 82-10M	COUNTY ST. CLAIR	TOTAL SHEETS 41	SHEET NO. 28	CONTRACT NO. 76C39
	FILE NAME = #FILE#	PLOT SCALE = *SCALE* PLOT DATE = *DATE*	SCALE: 1"=50' SHEET NO. OF SHEETS STA. TO STA.	FED. ROAD DIST. NO. ILLINOIS FED. AID PROJECT								