

PART OF U.S. SURVEY 627, T2N, R10W, OF THE 3RD PM, ST. CLAIR COUNTY, ILLINOIS

SEE COORDINATE LIST AND BASIS OF COORDINATES AND BEARINGS STATEMENT ON SHEET 2

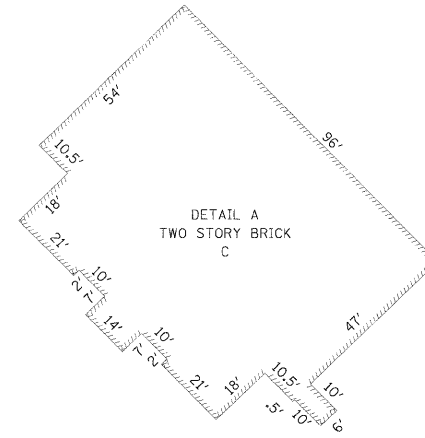
BEARINGS SHOWN HEREON ARE BASED ON THE MISSISSIPPI RIVER CROSSING (MRC) COORDINATE SYSTEM WHICH IS A MODIFIED UNIVERSAL TRANSVERSE MERCATOR (UTM) SYSTEM, ZONE 15 NORTH.



SPACE RESERVED FOR RECORDING OFFICER

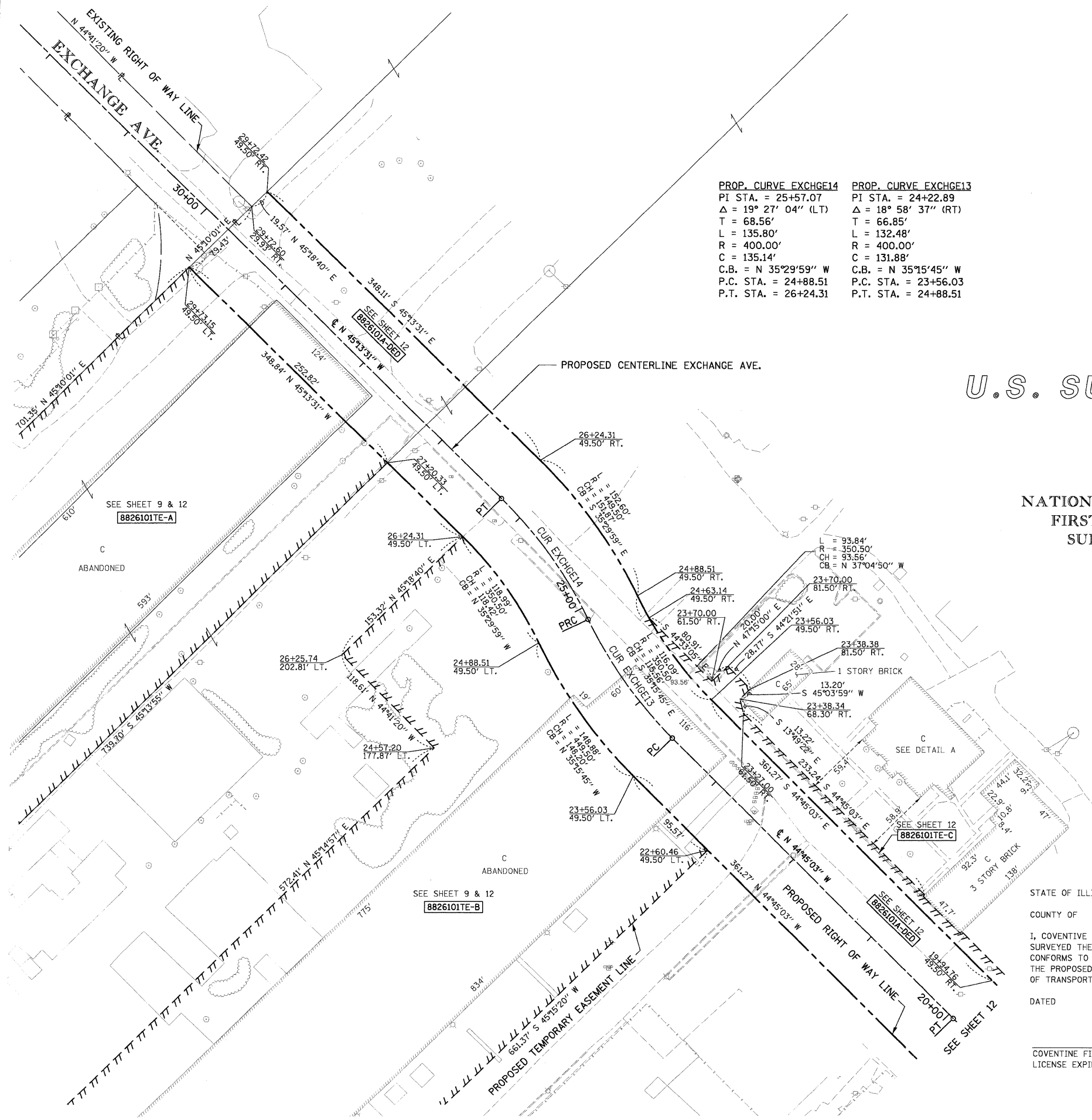
PROP. CURVE EXCHGE14
 PI STA. = 25+57.07
 $\Delta = 19^\circ 27' 04''$ (LT)
 T = 68.56'
 L = 135.80'
 R = 400.00'
 C = 135.14'
 C.B. = N 35°29'59" W
 P.C. STA. = 24+88.51
 P.T. STA. = 26+24.31

PROP. CURVE EXCHGE13
 PI STA. = 24+22.89
 $\Delta = 18^\circ 58' 37''$ (RT)
 T = 66.85'
 L = 132.48'
 R = 400.00'
 C = 131.88'
 C.B. = N 35°15'45" W
 P.C. STA. = 23+56.03
 P.T. STA. = 24+88.51



U.S. SURVEY 627

LOT A
 NATIONAL STOCK YARDS
 FIRST DIVISION OF
 SURVEY NO. 627
 (P.B.E, PG. 14)



NOTE: EXISTING R.O.W. OF EXCHANGE AVE. ESTABLISHED PER PB E, PG. 14

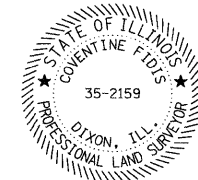
AMERICAN
 SURVEYING & ENGINEERING, P.C.
 841 N. Galena Ave. Dixon, IL 61021
 815-298-0231
 ILLINOIS PROFESSIONAL DESIGN
 FIRM NO. 184-003192 101046/97258

STATE OF ILLINOIS)
) SS
 COUNTY OF)

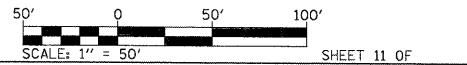
I, COVENTINE FIDIS, AN ILLINOIS PROFESSIONAL LAND SURVEYOR, STATE THAT I HAVE SURVEYED THE PLAT OF HIGHWAY SHOWN HEREON AND THAT THIS PROFESSIONAL SERVICE CONFORMS TO THE CURRENT ILLINOIS MINIMUM STANDARDS FOR A BOUNDARY SURVEY FOR THE PROPOSED PARCEL(S) TO BE ACQUIRED BY THE STATE OF ILLINOIS, DEPARTMENT OF TRANSPORTATION, SHOWN HEREON.

DATED

COVENTINE FIDIS, PLS NO. 35-2159
 LICENSE EXPIRATION DATE: 11/30/2010



ILLINOIS DEPARTMENT OF TRANSPORTATION
PLAT OF HIGHWAYS
 FAP ROUTE 998
 SECTION 82-1K
 ST. CLAIR COUNTY
 JOB NO. R-98-026-08
 STATION 21+00 TO STATION 30+00



ILLINOIS DEPARTMENT OF TRANSPORTATION
 DIVISION OF HIGHWAYS/REGION 5/DISTRICT 8
 1102 EASTPORT PLAZA DRIVE
 COLLINGSVILLE, ILLINOIS 62234-6198

F.A. RTE.	SECTION	COUNTY	TOTAL SHEETS	SHEET NO.
			41	40
CONTRACT NO.				
FED. ROAD DIST. NO.	ILLINOIS FED. AID PROJECT			