

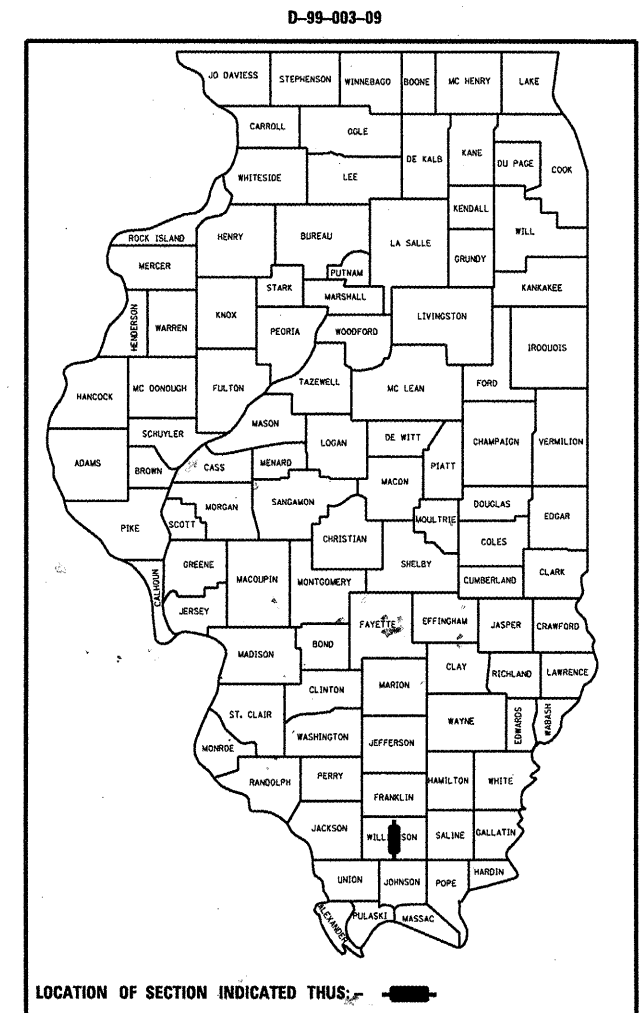
STATE OF ILLINOIS
 DEPARTMENT OF TRANSPORTATION
 DIVISION OF HIGHWAYS

**PROPOSED
 HIGHWAY PLANS**

FAI ROUTE 57 (I-57)
 SECTION (X1-6)LS-2
 PROJECT
 LANDSCAPING
 WILLIAMSON COUNTY
 C-99-011-09

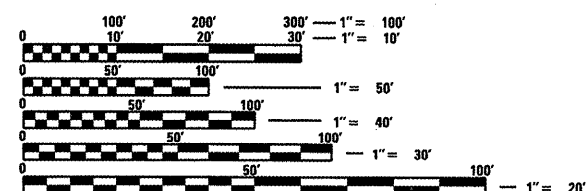
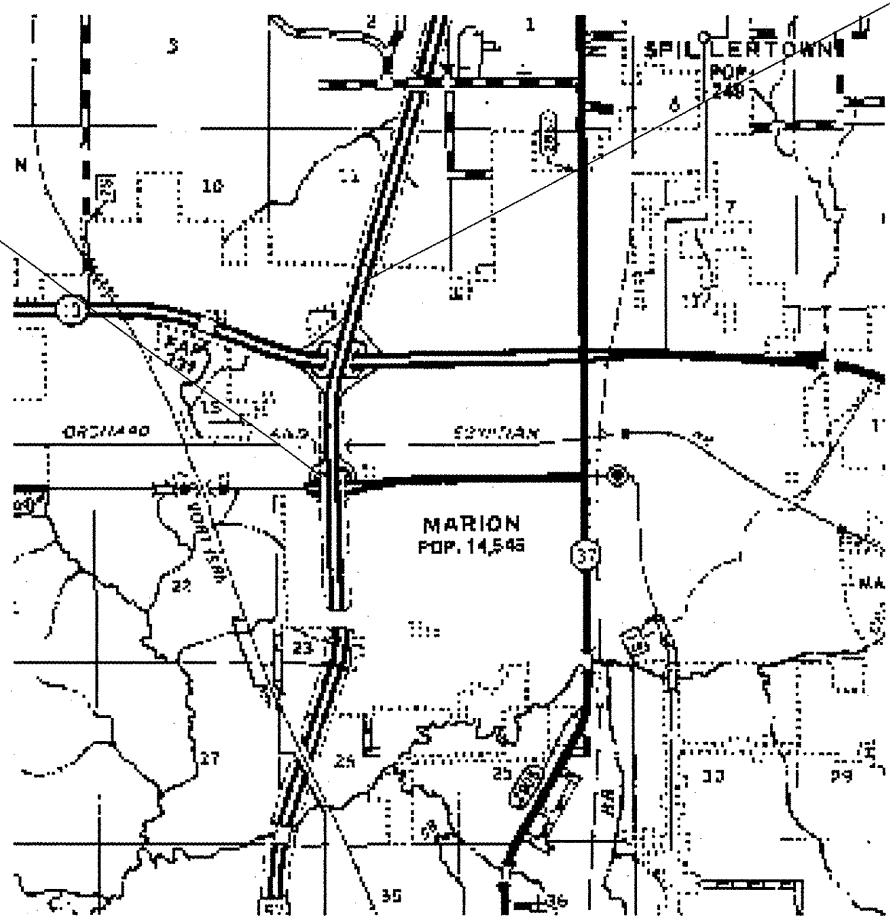
F.A.I. RTE.	SECTION	COUNTY	TOTAL SHEETS	SHEET NO.
57	X1-6)LS-2	WILLIAMSON	10	1
		ILLINOIS	CONTRACT NO. 78096	

FOR INDEX OF SHEETS, SEE SHEET NO. 3



LOCATION #1 OLD IL 13

LOCATION #2 MORGAN ST.



FULL SIZE PLANS HAVE BEEN PREPARED USING STANDARD ENGINEERING SCALES. REDUCED SIZED PLANS WILL NOT CONFORM TO STANDARD SCALES. IN MAKING MEASUREMENTS ON REDUCED PLANS, THE ABOVE SCALES MAY BE USED.

J.U.L.I.E.
 JOINT UTILITY LOCATION INFORMATION FOR EXCAVATION
 1-800-892-0123
 OR 811

PROJECT ENGINEER: CHARLES STEIN
 DESIGNER: MELISSA COLE

CONTRACT NO. 78096

STATE OF ILLINOIS
 DEPARTMENT OF TRANSPORTATION
 DIVISION OF HIGHWAYS

SUBMITTED May 5 2009
May C. Rami
 DEPUTY DIRECTOR OF HIGHWAYS, REGION ENGINEER

June 26, 2009
Charles J. Ingersoll
 ENGINEER OF DESIGN AND ENVIRONMENT

June 26, 2009
Christine M. Reed
 DIRECTOR OF HIGHWAYS, CHIEF ENGINEER

**PRINTED BY THE AUTHORITY
 OF THE STATE OF ILLINOIS**

Prepared By: *Joe Kaufman*
DISTRICT STUDIES & PLANS ENGINEER

Examined By: *James Lewis Emery*
DISTRICT LAND ACQUISITION ENGINEER

Examined By: *Carrie Nelson*
DISTRICT PROGRAM DEVELOPMENT ENGINEER

Examined By: *W.H. Mc...*
DISTRICT OPERATIONS ENGINEER

Examined By: *Jim Swisher*
DISTRICT CONSTRUCTION ENGINEER

Examined By: *Bruce W. Pables*
DISTRICT MATERIALS ENGINEER

Examined By: *Jim Swisher*
DISTRICT PROJECT IMPLEMENTATION ENGINEER

Examined By: *Danny Clayton*
ASSISTANT REGIONAL ENGINEER

Approved By: *Ma C. Lammie*
DEPUTY DIRECTOR OF HIGHWAYS, REGION 5 ENGINEER

May 5 2009
DATE

FILE NAME =	USER NAME = colemm	DESIGNED -	REVISED -
ca:\pwork\NPWIDOT\COLEMM\d0138383\d978	96_sht_misc.dgn	DRAWN -	REVISED -
	PLOT SCALE = 103.6758 ' / IN.	CHECKED -	REVISED -
	PLOT DATE = 4/30/2009	DATE -	REVISED -

**STATE OF ILLINOIS
DEPARTMENT OF TRANSPORTATION**

SIGNATURE SHEET

SCALE: SHEET NO. OF SHEETS STA. TO STA.

F.A.J. RTE.	SECTION	COUNTY	TOTAL SHEETS	SHEET NO.
57	(X1-6)LS-2	WILLIAMSON	10	2
CONTRACT NO. 78096			ILLINOIS FED. AID PROJECT	

INDEX OF SHEETS

SHEET NO.	DESCRIPTION
1	COVER SHEET
2	SIGNATURE SHEET
3	INDEX OF SHEETS AND STANDARDS
4	SUMMARY OF QUANTITIES
5	LOCATION #1 OLD IL 13 MEDIAN PLANTER PLAN
6	LOCATION #1 OLD IL 13 PLANTING LAYOUT
7	LOCATION #1 OLD IL 13 MEDIAN PLANTER DETAIL
8	LOCATION #1 OLD IL 13 INSPECTION PIPE & MASTER IRRIGATION CONTROLLER ENCLOSURE DETAILS
9	LOCATION #1 OLD IL 13 RPZ LAYOUT AND ENCLOSURE AND RPZ BACKFLOW PREVENTER INSTALLATION DETAILS
10	LOCATION #2 MORGAN ST. PLANTING LOCATION DETAIL HIGHWAY STANDARDS

STANDARDS

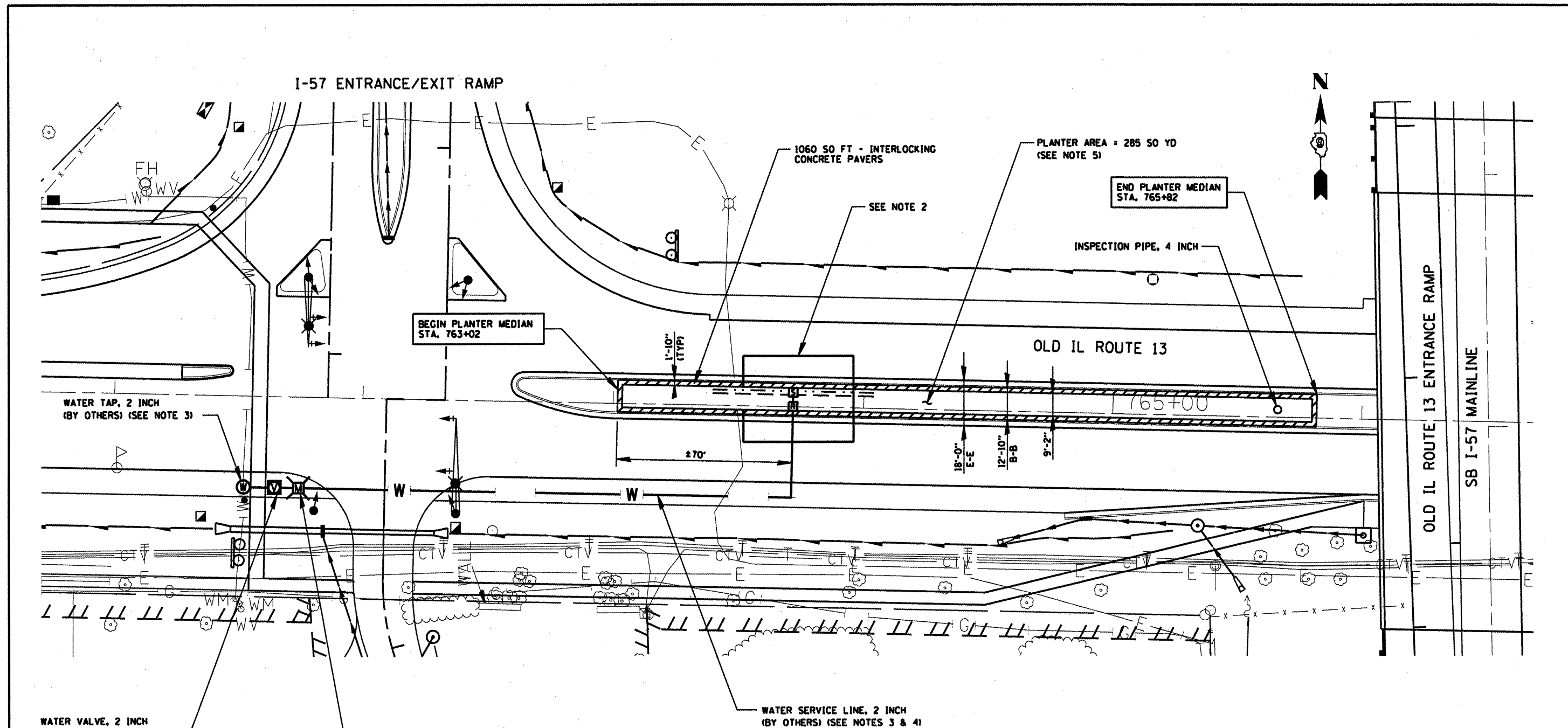
000001-05	701601-06
701101-02	701901-01

FILE NAME = c:\pwwork\VPWIDOT\COLEMM\d0138283\d978	USER NAME = colemm 96_sht_msc.dgn	DESIGNED -	REVISED -	STATE OF ILLINOIS DEPARTMENT OF TRANSPORTATION	INDEX OF SHEETS AND STANDARDS				F.A.J. RTE.	SECTION	COUNTY	TOTAL SHEETS	SHEET NO.		
	PLOT SCALE = 103.6758' / IN.	DRAWN -	REVISED -		SCALE:	SHEET NO.	OF	SHEETS	STA.	TO STA.	57	(X1-6)LS-2	WILLIAMSON	10	3
	PLOT DATE = 4/30/2009	CHECKED -	REVISED -		CONTRACT NO. 78096										
		DATE -	REVISED -		ILLINOIS FED. AID PROJECT										

SUMMARY OF QUANTITIES

CODE NUMBER	ITEM DESCRIPTION	UNIT	TOTAL QUANTITY	WILLIAMSON CO.	WILLIAMSON CO.
				LOCATION #1	LOCATION #2
	CONSTRUCTION TYPE CODE			ROADWAY URBAN 100% STATE	ROADWAY URBAN 100% STATE
				Y003	Y003
K0030450	PERENNIAL PLANTS, DAFFODIL BULBS	UNIT	64		64
K1003680	MULCH	SO YD	285	285	
XX003995	INTERLOCKING CONCRETE PAVERS	SO FT	1,060	1,060	
XX006328	RPZ BACKFLOW PREVENTER 2"	EACH	1	1	
XX006329	RPZ ENCLOSURE 2"	EACH	1	1	
X0321309	CONCRETE PAD	SO YD	1	1	
X0324525	PLANTING MIX FURNISH AND PLACE 36"	SO YD	285	285	
X0325102	INSPECTION PIPE 4 INCH	EACH	1	1	
X0325105	IRRIGATION SYSTEM	SO YD	285	285	
X0325109	POROUS GRANULAR MATERIAL	CU YD	64	64	
X0325604	WEED CONTROL, PRE-EMERGENT HERBICIDE	GALLON	1	1	
Z0027800	GEOTECHNICAL FABRIC	SO YD	466	466	
20200100	EARTH EXCAVATION	CU YD	373	373	
31101600	SUB-BASE GRANULAR MATERIAL, TYPE B 8"	SO YD	150	150	
K0040305	GALLIUM AFLATUNENSE 'PURPLE SENSATION' (1/2" (12CM) BULB)	EACH	1,350	1,350	
K0040307	ALCHEMILLA MOLLIS 'LADYS MANTLE' #1 CONTAINER	EACH	38	38	
K0040105	HEMEROCALLIS (BROCADED GOWN DAYLILY), 1-GALLON	EACH	112	112	
K0040107	HEMEROCALLIS (CHICAGO APACHE DAYLILY), 1-GALLON	EACH	52	52	
K0040204	HEUCHERA SANGUNIEDY (CHATTERBOX CORAL BELLS), 1-GALLON	EACH	300	300	
K0040109	HEMEROCALLIS (ROYAL OCCASION DAYLILY), 1-GALLON	EACH	52	52	
K0040111	HEMEROCALLIS (PARDON ME DAYLILY), 1-GALLON	EACH	52	52	
K0040113	HEMEROCALLIS (CHICAGO SUNRISE DAYLILY), 1-GALLON	EACH	112	112	
K0040115	HEMEROCALLIS (STELLA DE ORO DAYLILY), 1-GALLON	EACH	112	112	
K0040310	LIRIOPE SPICATA 'LILY TURF' (LILY TURF LIRIOPE) 1-QUART POT	EACH	801	801	
K0040207	MISCANTHUS SINENSIS (GRAZIELLA JAPANESE SILVER GRASS), 1-GALLON	EACH	35	35	
K0040211	PENNISETUM ALOPECURAIDES (HAMELN FOUNTAIN GRASS), 1-GALLON	EACH	40	40	
K0040209	PANICUM VIRGATUM (HEAVY METAL SWITCH GRASS), 1-GALLON	EACH	64	64	
C2201566	ROSA 'MEIKROTAL' (MEIKROTAL SHRUB ROSE), CONTAINER GROWN, 3-GALLON	EACH	62	62	
C2201603	ROSA 'NEARLY WILD' (NEARLY WILD SHRUB ROSE), CONTAINER GROWN, 3-GALLON	EACH	93	93	
K0040309	SELLA SIBIRICA (SPRING BEAUTY SELLA) (1/4" (8CM) BULB)	EACH	414	414	
67000400	ENGINEER'S FIELD OFFICE, TYPE A	CAL MO	5	4	1
67100100	MOBILIZATION	L SUM	1	0.8	0.2
70102630	TRAFFIC CONTROL AND PROTECTION, STANDARD 701601	L SUM	1	1	

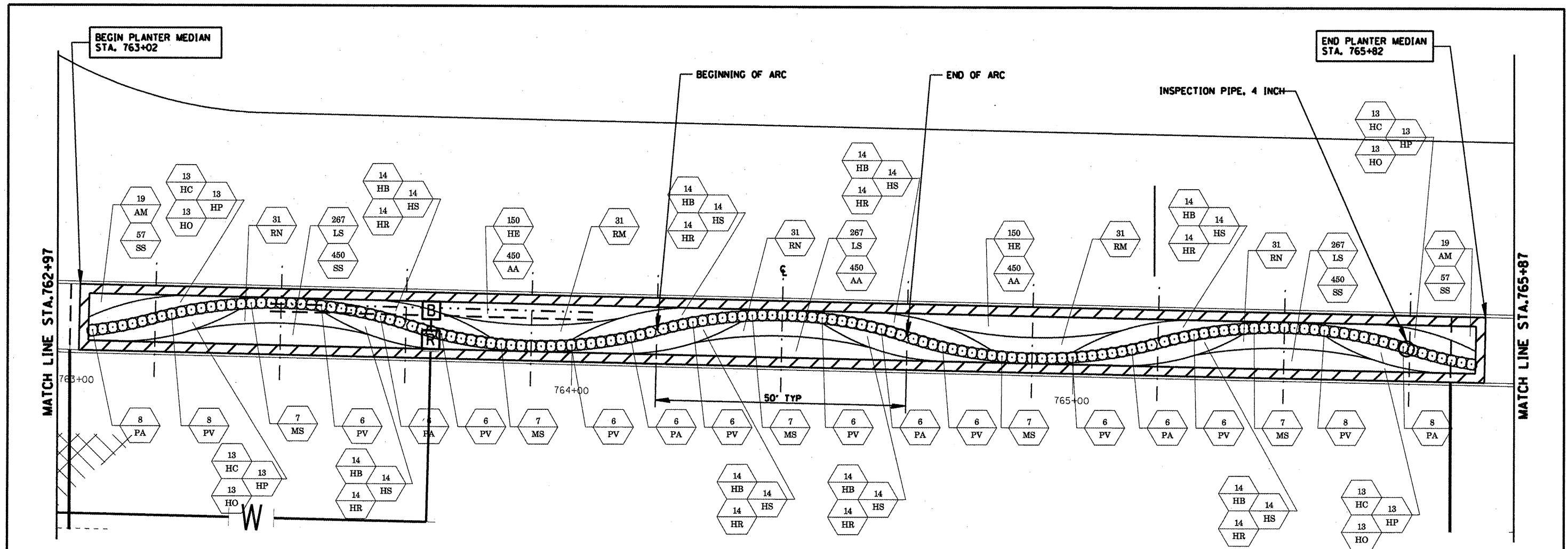
FILE NAME =	USER NAME = colemm	DESIGNED -	REVISED -	STATE OF ILLINOIS DEPARTMENT OF TRANSPORTATION	SUMMARY OF QUANTITIES			F.A.I. RTE.	SECTION	COUNTY	TOTAL SHEETS	SHEET NO.	
02\pvt\work\PWIDOT\COLEMM\d0138303\d978	96_sht_miso.dgn	DRAWN -	REVISED -		SCALE: NONE	SHEET NO.	OF	SHEETS	STA.	TO STA.	WILLIAMSON	10	4
	PLOT SCALE = 1/8" = 1' IN.	CHECKED -	REVISED -		CONTRACT NO. 78096								
	PLOT DATE = 5/11/2009	DATE -	REVISED -		ILLINOIS FED. AID PROJECT								



- NOTES**
1. SEE MEDIAN PLANTER CONSTRUCTION DETAILS FOR ADDITIONAL PLANTER MEDIAN INFORMATION.
 2. SEE MEDIAN PLANTER CONSTRUCTION DETAILS FOR RPZ LAYOUT AND ENCLOSURE DETAILS.
 3. THE CITY OF MARION WILL INSTALL THE WATER TAP, SERVICE LINE, VALVE, METER AND VAULT. THE CONTRACTOR SHALL BE RESPONSIBLE FOR COORDINATING THE LOCATIONS OF THESE ITEMS WITH THE CITY OF MARION.
 4. SEE THE RPZ BACKFLOW PREVENTER INSTALLATION DETAIL FOR THE LIMITS OF THE WATER SERVICE LINE TO BE INSTALLED BY THE CITY OF MARION.
 5. SEE LANDSCAPING PLAN FOR PLANTING DETAILS.



FILE NAME =	USER NAME = colemm	DESIGNED -	REVISED -	STATE OF ILLINOIS DEPARTMENT OF TRANSPORTATION	LOCATION #1 OLD 13 MEDIAN PLANTER PLAN	F.A.I. R.T.E.	SECTION	COUNTY	TOTAL SHEETS	SHEET NO.	
ct:\pw\work\PIWIDOT\COLEMM\0138303\d97896_sht_msc.dgn	PLOT SCALE = 41.4703 1/4 IN.	DRAWN -	REVISED -			57	(X1-6)LS-2	WILLIAMSON	10	5	
PLOT DATE = 4/30/2009	DATE -	CHECKED -	REVISED -			CONTRACT NO. 78096		ILLINOIS FED. AID PROJECT			
		DATE -	REVISED -			SCALE: 40	SHEET NO. OF SHEETS	STA. TO STA.			



LEGEND

- PROPOSED ORNAMENTAL GRASS
- PROPOSED SHRUBS / PERENNIALS / BULBS

1 LANDSCAPE PLAN
1" = 10'-0"

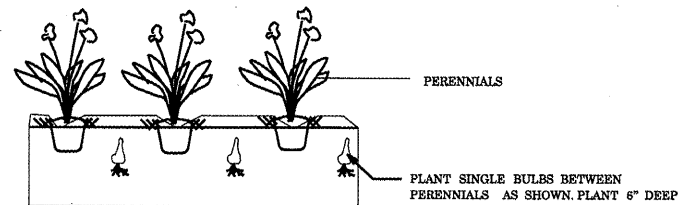
NOTES

1. PLANT QUANTITIES SHOWN ON DRAWINGS ARE FOR CONTRACTOR'S CONVENIENCE IN ESTIMATING ONLY. CONTRACTOR IS RESPONSIBLE FOR PROVIDING PLANT MATERIALS SUFFICIENT TO COVER AREAS SHOWN ON PLANS AT THE SPACINGS INDICATED.
2. PLANTINGS SHALL CONFORM TO IDOT STANDARD SPECIFICATIONS FOR ROAD AND BRIDGE CONSTRUCTION.
3. CONTRACTOR MUST PERFORM DUE DILIGENCE IN LOCATING SPECIFIED PLANT MATERIAL.
4. NO SUBSTITUTIONS OF PLANT MATERIAL, QUANTITIES OR SIZES UNLESS APPROVED BY THE ENGINEER.
5. MULCH TO BE APPLIED EVENLY TO PLANTING BED, DO NOT COVER CROWNS OF PLANTS OR MOUND AT TRUNK.
6. FINAL GRADE AND LAYOUT TO BE APPROVED BY THE ENGINEER PRIOR TO PLANTING
7. ALL PLANT MATERIAL MASSES SHALL BE INSTALLED IN STAGGERED ROWS (TRIANGULATION METHOD) UNLESS OTHERWISE NOTED.
8. SEE MEDIAN PLANTER CONSTRUCTION DETAILS FOR PLANTER DETAIL, RPZ LAYOUT, AND ENCLOSURE DETAILS.

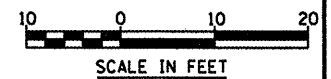
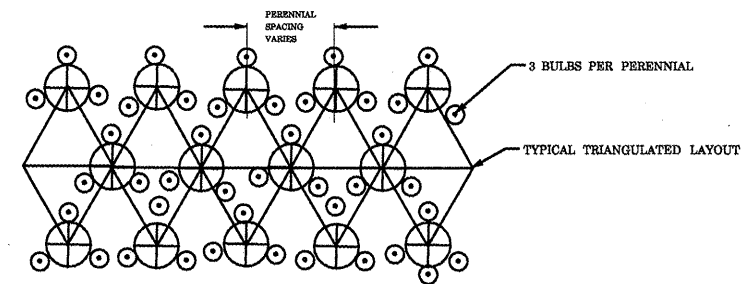
CODE	QUAN	BOTANICAL NAME	COMMON NAME	SIZE	ROOT	REMARKS
AA	1360	Allium aflatunense 'Purple Sensation'	Purple Sensation Allium	12cm	bulb	8" o.c. interplanted
AM	38	Alchemilla mollis	Lady's Mantle	#1	container	15" o.c.
HB	112	Hemerocallis 'Brocade Gown'	Brocade Gown Daylily	1 gal	pot	15" o.c.
HC	52	Hemerocallis 'Chicago Apache'	Chicago Apache Daylily	1 gal	pot	15" o.c.
HE	300	Heuchera sanguinea 'Chatterbox'	Chatterbox Coral Bella	1 gal	pot	12" o.c.
HO	52	Hemerocallis 'Royal Occasion'	Royal Occasion Daylily	1 gal	pot	15" o.c.
HP	52	Hemerocallis 'Pardon Me'	Pardon Me Daylily	1 gal	pot	15" o.c.
HR	112	Hemerocallis 'Chicago Sunrise'	Chicago Sunrise Daylily	1 gal	pot	15" o.c.
HS	112	Hemerocallis 'Stella de Oro'	Stella de Oro Daylily	1 gal	pot	15" o.c.
LS	801	Liriope spicata	Lily Turf	1 quart	pot	9" o.c.
MS	35	Miscanthus sinensis 'Grassella'	Japanese Silver Grass	1 gal	pot	24" o.c.
PA	40	Pennisetum alopecuroides 'Hameln'	Hameln Fountain Grass	1 gal	pot	24" o.c.
PV	64	Panicum virgatum 'Heavy Metal'	Heavy Metal Switch Grass	1 gal	pot	24" o.c.
RM	62	Rosa 'Meikrotal'	Scarlet Meidiland Shrub Rose	3 gal	container	18" o.c.
RN	93	Rosa 'Nearly Wild'	Nearly Wild Shrub Rose	3 gal	container	18" o.c.
SS	414	Scilla Sibirica 'Spring Beauty'	Spring Beauty Scilla	8cm	bulb	6" o.c. interplanted



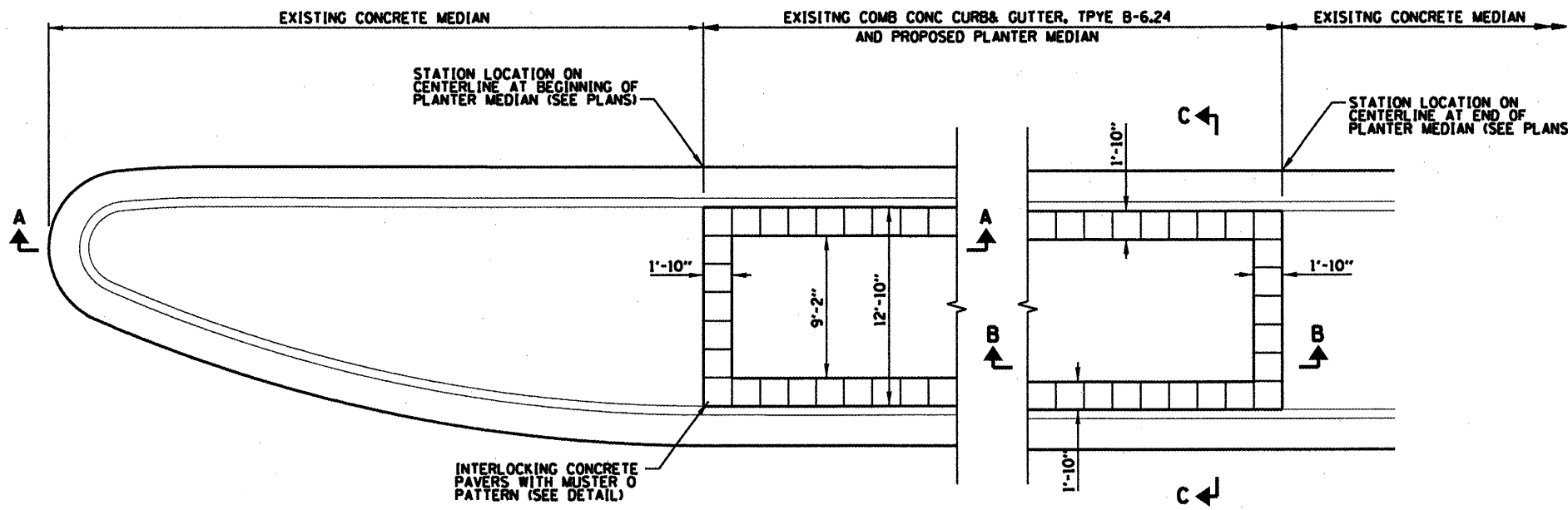
2 SHRUB AND PERENNIAL PLANTING DETAIL
NOT TO SCALE



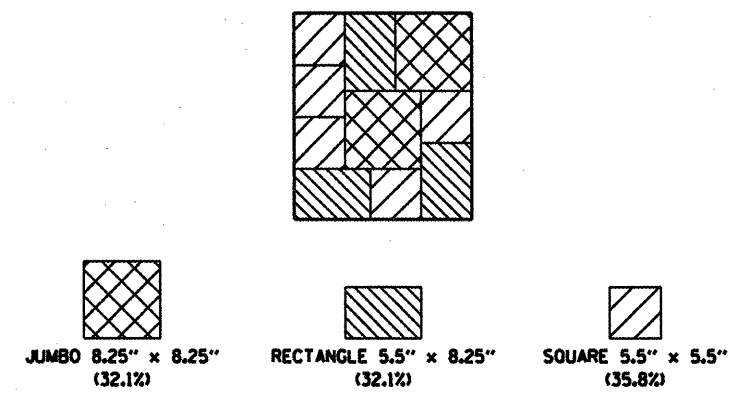
3 BULBS PLANTED WITH PERENNIALS
NOT TO SCALE



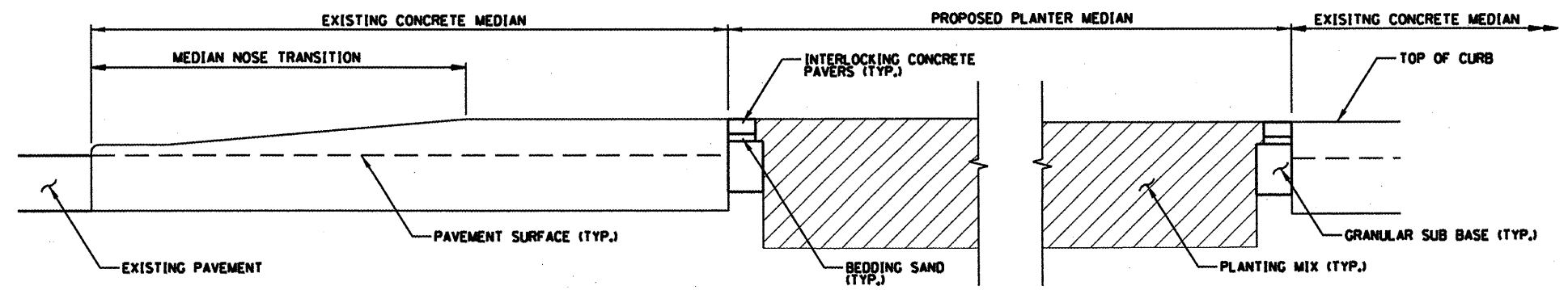
FILE NAME = c:\pwork\p\1DDT\COLEMM\d138303\d978	USER NAME = colemm 96_sht_miso.dgn	DESIGNED - DRAWN -	REVISED - REVISED -	STATE OF ILLINOIS DEPARTMENT OF TRANSPORTATION	LOCATION #1 OLD IL 13 PLANTING LAYOUT	F.A.I. RTE. 57	SECTION (X1-6LS-2)	COUNTY WILLIAMSON	TOTAL SHEET NO. 10	SHEET NO. 6
PLOT SCALE = 62,2055' / IN.	PLOT DATE = 4/30/2009	CHECKED - DATE -	REVISED - REVISED -			SCALE: 20	SHEET NO. OF SHEETS	STA. TO STA.	CONTRACT NO. 78096	



PLAN VIEW
SCALE: 1" = 5'

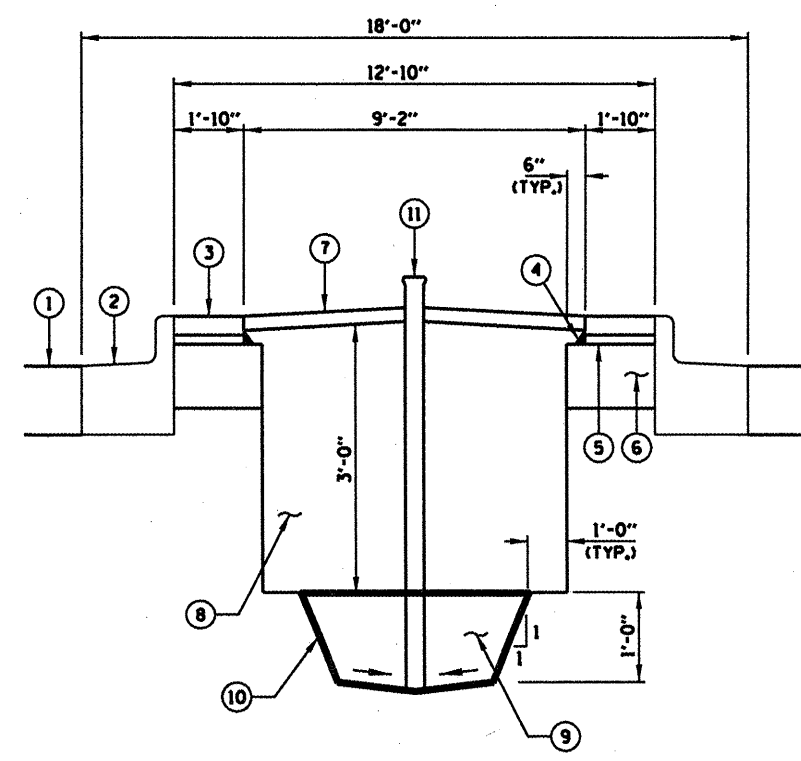


MUSTER O PATTERN DETAIL
NOT TO SCALE



SECTION A-A
NOT TO SCALE

SECTION B-B
NOT TO SCALE



SECTION C-C
NOT TO SCALE

LEGEND

- ① EXISTING PAVEMENT
- ② EXISTING COMB CONC C&G, TYPE B-6.24
- ③ INTERLOCKING CONCRETE PAVERS
- ④ STEEL EDGE RESTRAINT (INCLUDED IN THE COST OF THE INTERLOCKING CONCRETE PAVERS)
- ⑤ BEDDING SAND (INCLUDED IN THE COST OF INTERLOCKING CONCRETE PAVERS)
- ⑥ SUB-BASE GRANULAR MATERIAL, TYPE B, 8"
- ⑦ MULCH
- ⑧ PLANTING MIX FURNISH AND PLACE 36"
- ⑨ POROUS GRANULAR MATERIAL
- ⑩ GEOTECHNICAL FABRIC
- ⑪ INSPECTION PIPE (SEE NOTE 1)

NOTES

- 1. SEE MEDIAN PLANTER CONSTRUCTION DETAILS FOR INSPECTION PIPE DETAIL.

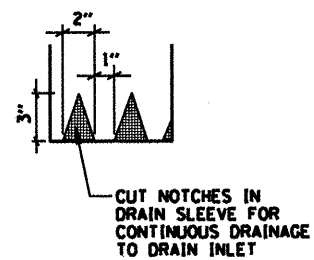
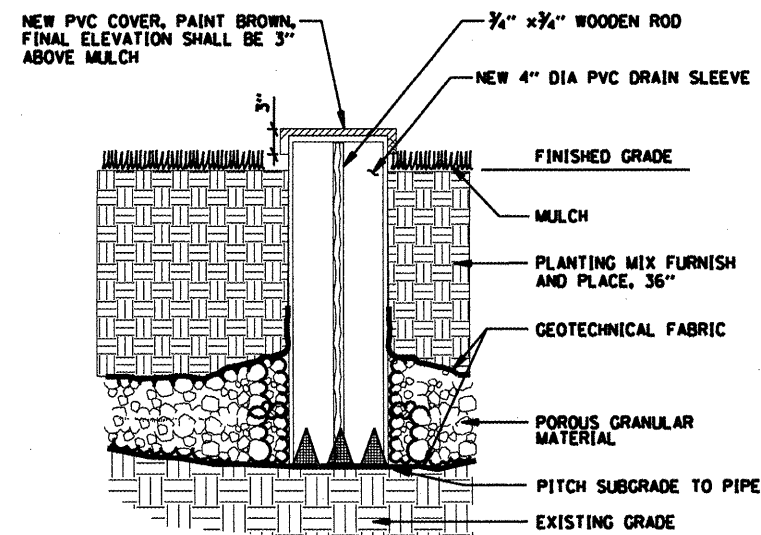
FILE NAME =	USER NAME = colemm	DESIGNED -	REVISED -
ca\pwwork\pww\d007\COLEMM\d0138383\d978	96_sht_mso.dgn	DRAWN -	REVISED -
	PLOT SCALE = 20.7352 1/1 IN.	CHECKED -	REVISED -
	PLOT DATE = 4/30/2009	DATE -	REVISED -

STATE OF ILLINOIS
DEPARTMENT OF TRANSPORTATION

LOCATION #1 OLD IL 13
MEDIAN PLANTER DETAIL

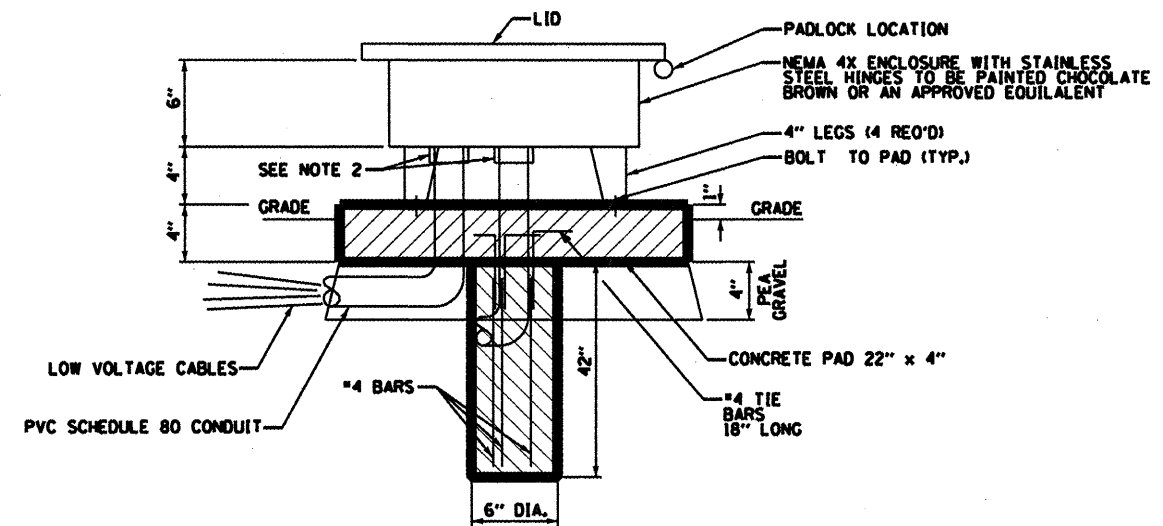
F.A.I. RTE.	SECTION	COUNTY	TOTAL SHEETS	SHEET NO.
57	(X1-6)LS-2	WILLIAMSON	10	7
			CONTRACT NO. 78096	
ILLINOIS FED. AID PROJECT				

SCALE: NONE SHEET NO. OF SHEETS STA. TO STA.



DRAIN SLEEVE ELEVATION

INSPECTION PIPE DETAIL



NOTES:

1. ALL ITEMS SHOWN IN THIS DETAIL SHALL BE INCLUDED IN THE CONTRACT UNIT PRICE FOR IRRIGATION SYSTEM UNLESSWISE NOTED.
2. PROVIDE NEMA 4 CONDUIT HUBS FOR ALL CONDUITS ENTERING NEMA 4X ENCLOSURE.

MASTER IRRIGATION CONTROLLER ENCLOSURE DETAIL

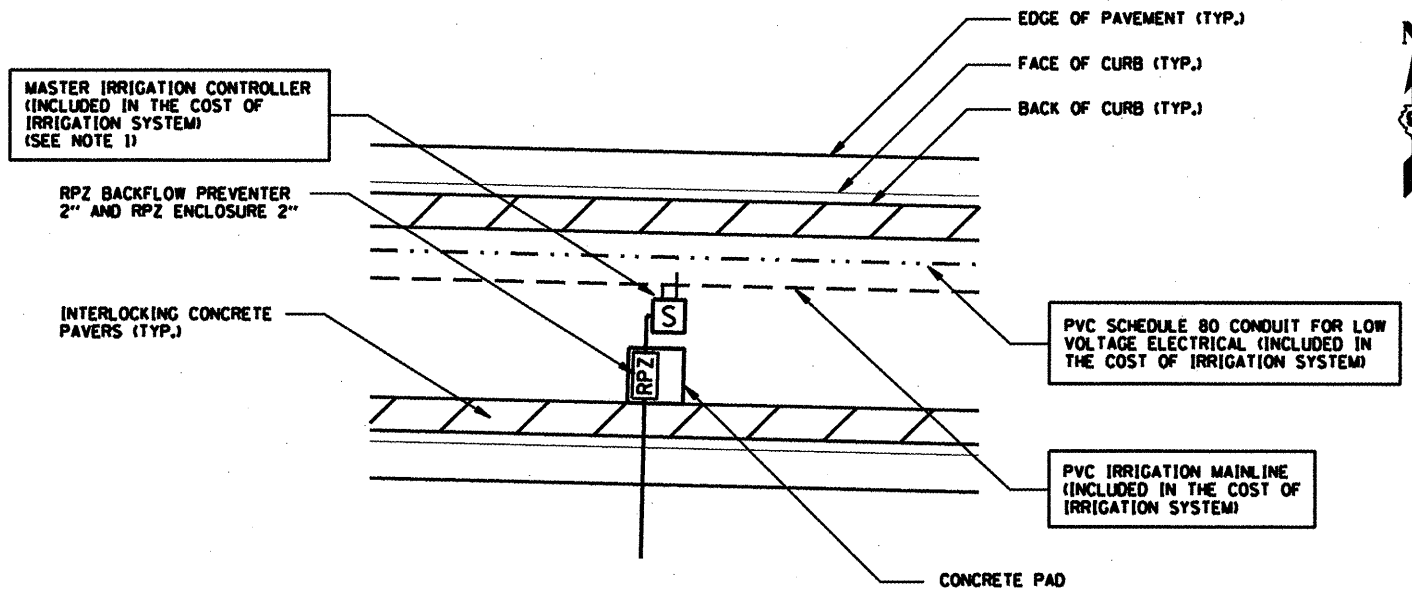
FILE NAME =	USER NAME = colemm	DESIGNED -	REVISED -
ca\pwwork\PIWIDOT\COLEMM\0138383\d978	96_sht_msc.dgn	DRAWN -	REVISED -
	PLOT SCALE = 41.4783' / 1" IN.	CHECKED -	REVISED -
	PLOT DATE = 4/30/2009	DATE -	REVISED -

STATE OF ILLINOIS
DEPARTMENT OF TRANSPORTATION

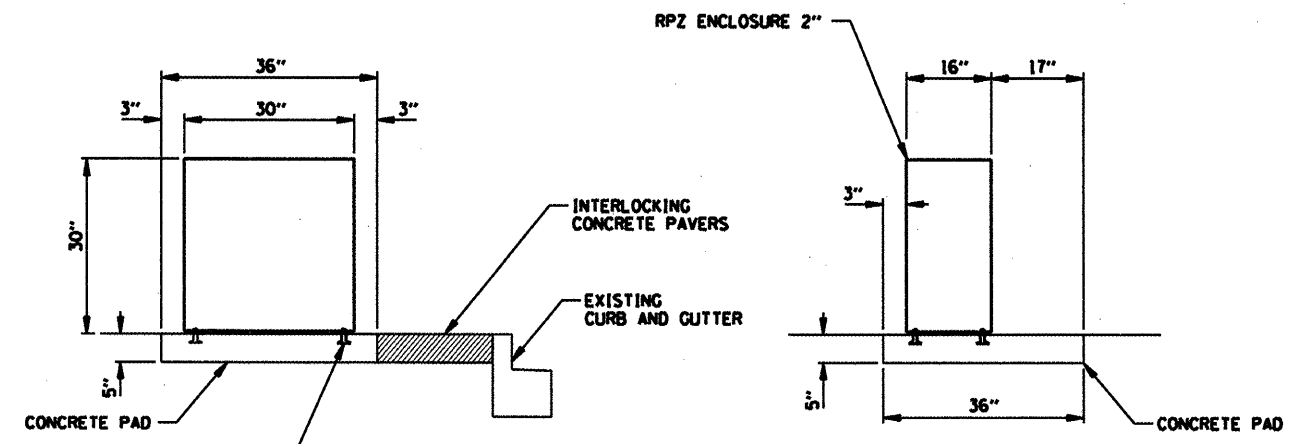
LOCATION #1 OLD IL 13 INSPECTION PIPE & MASTER
IRRIGATION CONTROLLER ENCLOSURE DETAILS

SCALE: NONE SHEET NO. OF SHEETS STA. TO STA.

F.A.J. RTE.	SECTION	COUNTY	TOTAL SHEETS	SHEET NO.
57	(X1-6XLS-2	WILLIAMSON	10	8
CONTRACT NO. 78096			ILLINOIS FED. AID PROJECT	



PLAN VIEW



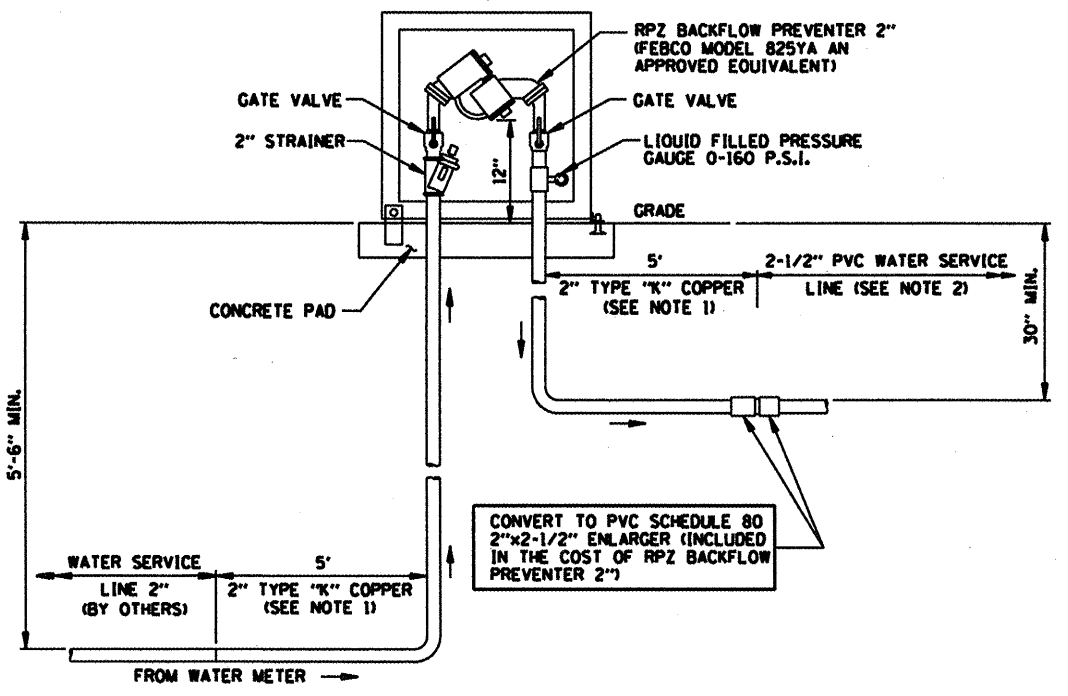
VIEW LOOKING WEST

VIEW LOOKING NORTH

LOCK AND KEY TO CAGE, 1 KEY COMMON TO ALL LOCKS, PROVIDE 3 KEYS (INCLUDED IN THE COST OF RPZ ENCLOSURE) (SEE NOTE 2)

- NOTES:**
1. THE IRRIGATION SYSTEM SHALL BE SOLAR POWERED UNLESS OTHERWISE APPROVED BY THE ENGINEER.
 2. THE CONTRACTOR SHALL COORDINATE THE HARDWARE REQUIREMENTS FOR KEYING OF THE LOCK WITH THE RESIDENT ENGINEER.

RPZ LAYOUT AND ENCLOSURE DETAIL



- NOTES:**
1. 2" TYPE "K" COPPER PIPE SHALL BE INCLUDED IN THE CONTRACT. UNIT PRICE FOR RPZ BACKFLOW PREVENTER 2".
 2. 2-1/2" PVC WATER SERVICE LINE SHALL BE INCLUDED IN THE CONTRACT UNIT PRICE FOR IRRIGATION SYSTEM.

RPZ BACKFLOW PREVENTER INSTALLATION DETAIL

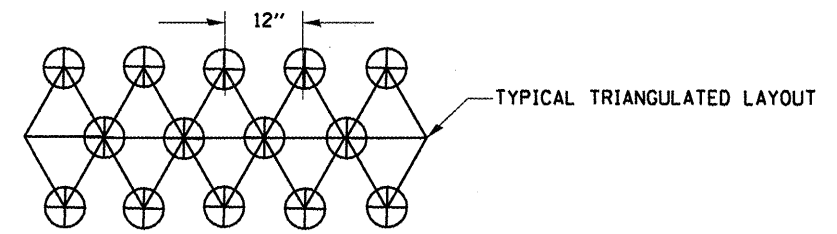
FILE NAME =	USER NAME = colemm	DESIGNED -	REVISED -	STATE OF ILLINOIS DEPARTMENT OF TRANSPORTATION	LOCATION #1 OLD IL 13 RPZ LAYOUT AND ENCLOSURE AND RPZ BACKFLOW PREVENTER INSTALLATION DETAILS	F.A.I. RTE.	SECTION	COUNTY	TOTAL SHEETS	SHEET NO.	
ct:\pw_work\PWIDOT\COLEMM\d0138303\d97896_sht_misc.dgn	PLOT SCALE = 41.4783' / IN.	DRAWN -	REVISED -			57	(X1-6LS-2	WILLIAMSON	10	9	
	PLOT DATE = 5/7/2009	CHECKED -	REVISED -			SCALE: NONE		SHEET NO. OF SHEETS STA. TO STA.		CONTRACT NO. 78096	
		DATE -	REVISED -			ILLINOIS FED. AID PROJECT					



2 CENTER CURVE
12' OFFSET
35'-200' RADIUS

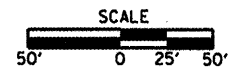
 PERENNIAL PLANTS, DAFFODIL BULBS

PLAN DOES NOT TIE
DUE TO DIFFERENT
DATES OF PHOTOGRAPHY



2 CENTER CURVE
5' OFFSET
50'-300' RADIUS

LOCATION	OFFSET
AREA 1 (ALL OFFSETS FROM CL MORGAN ST. RAMP)	
109+06	23.1
110+11	17.5
110+14	89.5
110+32	84.1
AREA 2 (ALL OFFSETS FROM CL MORGAN ST. RAMP)	
110+91	19.7
110+93	38.9
112+09	17.5
112+11	36.7
AREA 3 (ALL OFFSETS FROM CL NB I-57)	
1473+70	149.1
1473+71	116.1
1473+86	149.3
1474+08	116.6
AREA 4 (ALL OFFSETS FROM CL NB I-57)	
1475+01	134.6
1475+01	114.4
1475+52	135.8
1475+52	115.6



NOTES

1. PLANT QUANTITIES SHOWN ON DRAWINGS ARE FOR CONTRACTOR'S CONVENIENCE IN ESTIMATING ONLY. CONTRACTOR IS RESPONSIBLE FOR PROVIDING PLANT MATERIALS SUFFICIENT TO COVER AREAS SHOWN ON PLANS AT THE SPACINGS INDICATED.
2. PLANTINGS SHALL CONFORM TO IDOT STANDARD SPECIFICATIONS FOR ROAD AND BRIDGE CONSTRUCTION.
3. CONTRACTOR MUST PERFORM DUE DILIGENCE IN LOCATING SPECIFIED PLANT MATERIAL.
4. NO SUBSTITUTIONS OF PLANT MATERIAL, QUANTITIES OR SIZES UNLESS APPROVED BY THE ENGINEER.
5. FINAL GRADE AND LAYOUT TO BE APPROVED BY THE ENGINEER PRIOR TO PLANTING
6. ALL PLANT MATERIAL MASSES SHALL BE INSTALLED IN STAGGERED ROWS (TRIANGULATION METHOD) UNLESS OTHERWISE NOTED.

FILE NAME =	USER NAME = colemm	DESIGNED -	REVISED -
ca:\p\work\VP\IDOT\COLEMM\0138303\d978	96_sht_msc.dgn	DRAWN -	REVISED -
	PLOT SCALE = 103.8758 "/ IN.	CHECKED -	REVISED -
	PLOT DATE = 5/11/2009	DATE -	REVISED -

STATE OF ILLINOIS
DEPARTMENT OF TRANSPORTATION

LOCATION #2 MORGAN ST.
PLANTING LOCATION DETAIL

F.A.I. RTE.	SECTION	COUNTY	TOTAL SHEETS	SHEET NO.
57	IXI-6ILS-2	WILLIAMSON	10	10
CONTRACT NO. 78096				
ILLINOIS FED. AID PROJECT				

SCALE: SHEET NO. OF SHEETS STA. TO STA.