

PROJECT ENGINEER: REBECCA MARRUFFO

SQUAD LEADER: DAWN PERKINS (815)-284-5948

F.A.P. RTE.	SECTION	COUNTY	TOTAL SHEETS	SHEET NO.
742	37R-3	OGLE	345	1
FED. ROAD DIST. NO.	ILLINOIS	CONTRACT NO. 84788		

*345+6=351

STATE OF ILLINOIS
DEPARTMENT OF TRANSPORTATION

DIVISION OF HIGHWAYS

**PROPOSED
HIGHWAY PLANS**

FAP ROUTE 742 (IL 2)
SECTION 37R-3
PROJECT ACF-0742(128)
OGLE COUNTY

C-92-081-08



D-92-064 86



INDEX

SEE SHEET 2

STATE STANDARDS

SEE SHEET 2

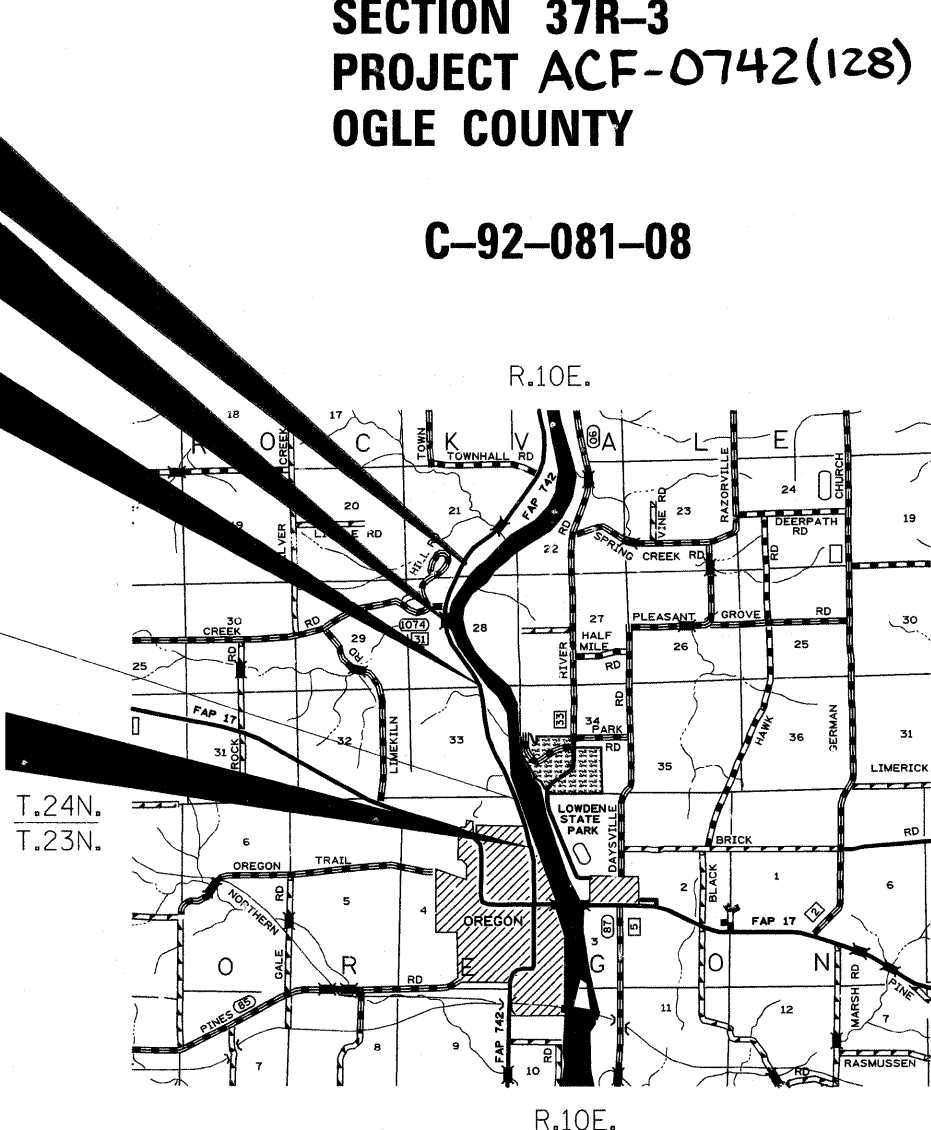
IMPROVEMENT & SECTION ENDS
STA. 752+50

OMISSION
STA. 712+36 TO
STA. 729+37

RECONSTRUCTION ENDS
STA. 680+00

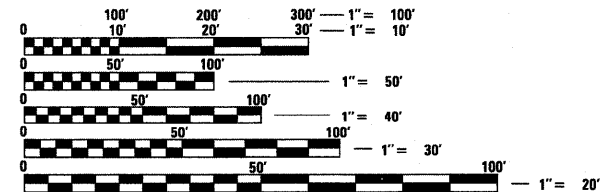
STATION EQUATION= STA. 620+11.65 BK=
STA. 620+12.36 AH

IMPROVEMENT & SECTION BEGINS
STA. 603+07.85



DESIGN DESIGNATION

965 (15) OTHER PRINCIPAL ARTERIAL 5.51 (PCC-20)



FULL SIZE PLANS HAVE BEEN PREPARED USING STANDARD
ENGINEERING SCALES. REDUCED SIZED PLANS WILL NOT
CONFORM TO STANDARD SCALES. IN MAKING MEASUREMENTS
ON REDUCED PLANS, THE ABOVE SCALES MAY BE USED.

J.U.L.I.E.
JOINT UTILITY LOCATION INFORMATION FOR EXCAVATION
1-800-892-0123
OR 811

CONTRACT NO. 84788

ROCKVALE TOWNSHIP, SECTION 28,33,21
OREGON TOWNSHIP, SECTION 3,4
GROSS LENGTH OF PROJECT = 14,942 LIN. FT. = 2.83 MILES
NET LENGTH OF PROJECT = 13,241 LIN. FT. = 2.51 MILES

STATE OF ILLINOIS
DEPARTMENT OF TRANSPORTATION
DIVISION OF HIGHWAYS

SUBMITTED 511 20 09
Steve E. Brown
DEPUTY DIRECTOR OF HIGHWAYS, REGION ENGINEER

June 26, 2009
Charles G. Ingervold
ENGINEER OF DESIGN AND ENVIRONMENT

June 26, 2009
Christine M. Reed
DIRECTOR OF HIGHWAYS, CHIEF ENGINEER

**PRINTED BY THE AUTHORITY
OF THE STATE OF ILLINOIS**