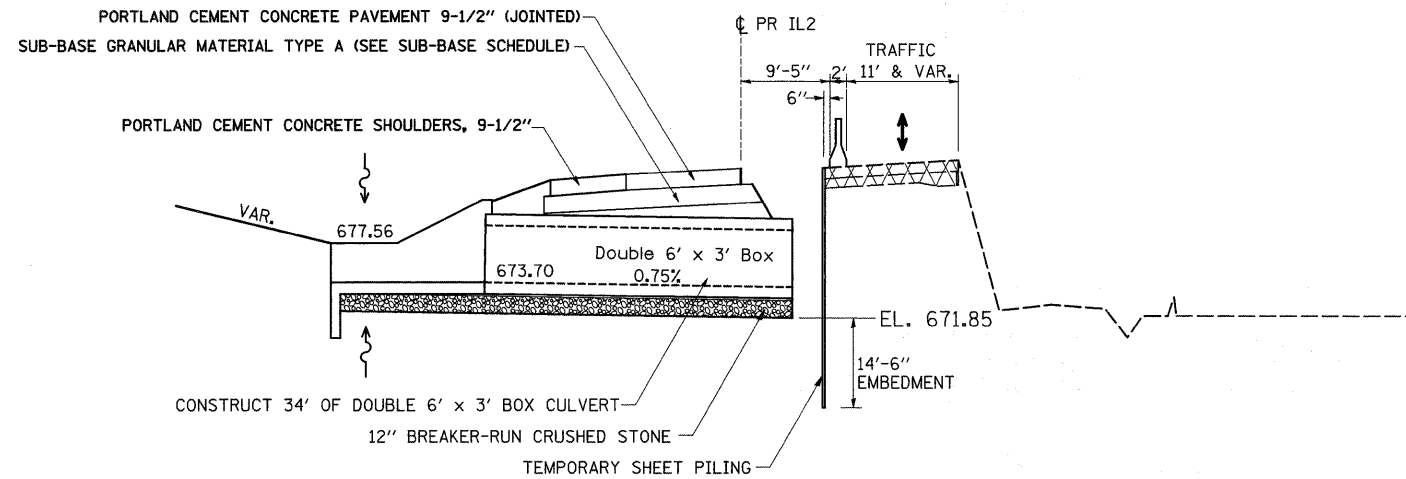


STAGING CULVERT TYPICALS

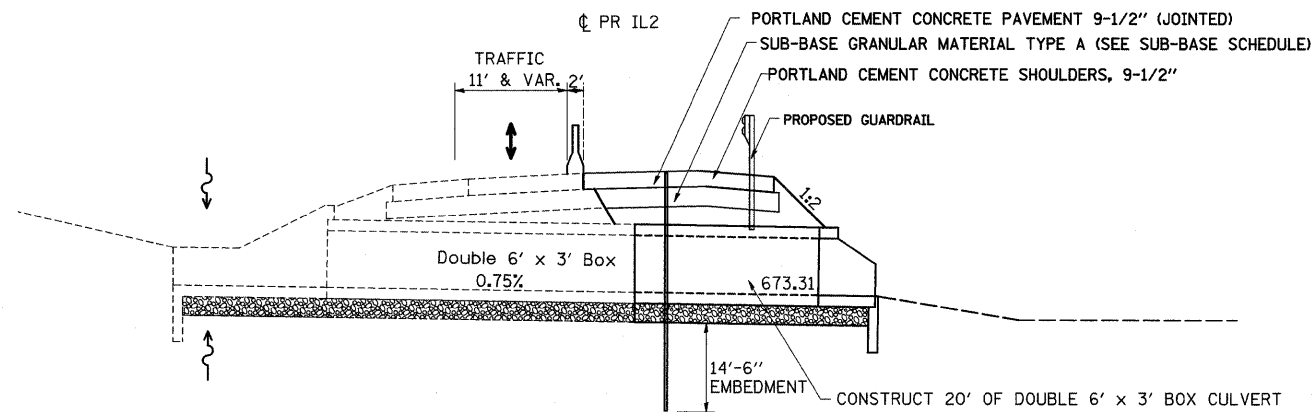
6'x3' Precast Double Box Culvert

STA. 615 + 22

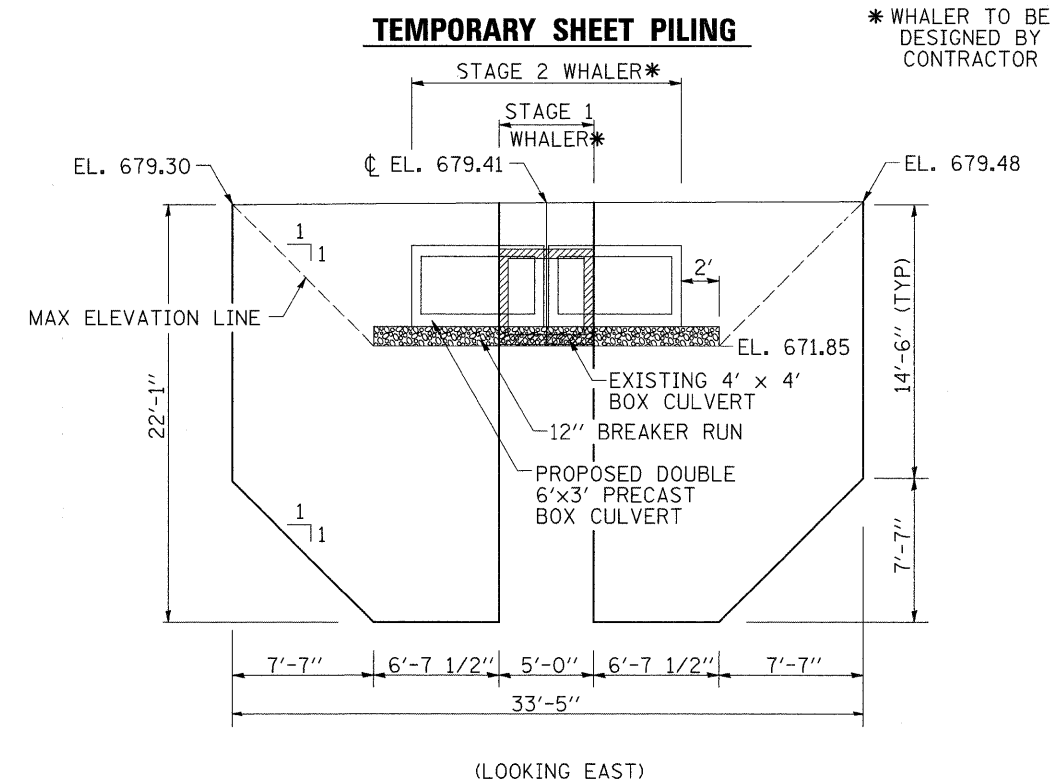
STAGE 6



STAGE 7



TEMPORARY SHEET PILING



* WHALER TO BE DESIGNED BY CONTRACTOR

TEMPORARY SHEET PILING DATA:
 EMBEDMENT: 14'-6" BEYOND MAX. EXCAVATION (MIN.)
 SECTION MODULUS: 11.4 in³/ft.
 Fy: 38,500 psi.

GENERAL NOTES:

- 1) TRAFFIC CONTROL TO BE SET UP AND PAID FOR ACCORDING TO TRAFFIC CONTROL AND PROTECTION STANDARD 701321.
- 2) THE CONTRACTOR IS RESPONSIBLE FOR MAINTAINING FLOW IN A MANNER ACCEPTABLE TO THE ENGINEER.
- 4) BARRIER WALL AND IMPACT ATTENUATORS SHALL BE SET UP AS SHOWN IN STANDARD 701321

FILE NAME =	USER NAME = cushmanbw	DESIGNED -	REVISED -	STATE OF ILLINOIS DEPARTMENT OF TRANSPORTATION	STAGING CULVERT TYPICALS	F.A.P. RTE. 742	SECTION 37R-3	COUNTY OGLE	TOTAL SHEETS 345	SHEET NO. 25		
CONTRACT NO. 84788	PLOT SCALE = 50.0000' / IN.	CHECKED -	REVISED -			SCALE:	SHEET NO. OF SHEETS STA. TO STA.	FED. ROAD DIST. NO.	ILLINOIS FED. AID PROJECT			
	PLOT DATE = Thu Apr 30 14:52:22 2009	DATE -	REVISED -									