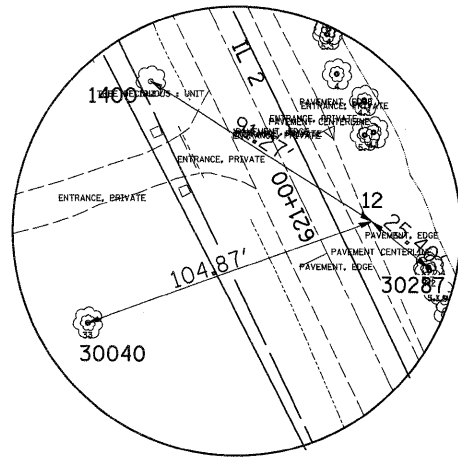
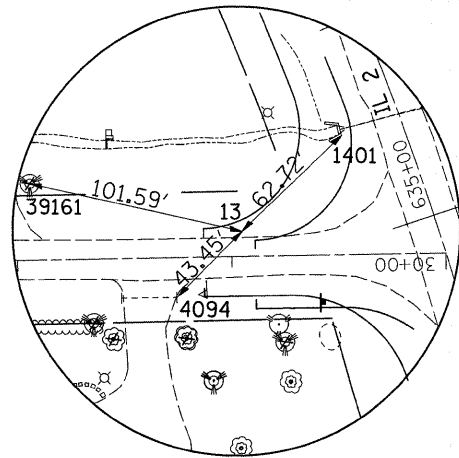


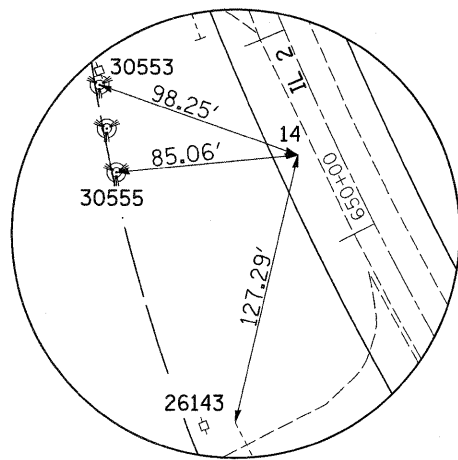
HORIZONTAL & VERTICAL CONTROL



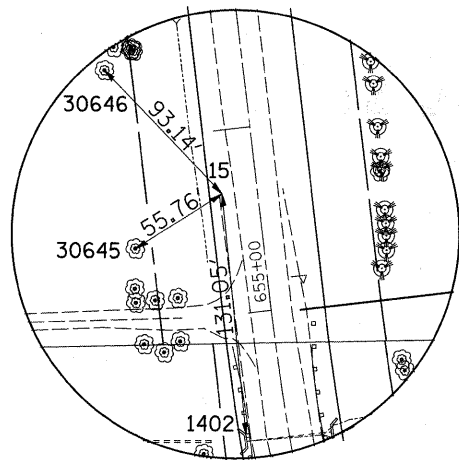
HORIZONTAL CONTROL
POINT NO. 12



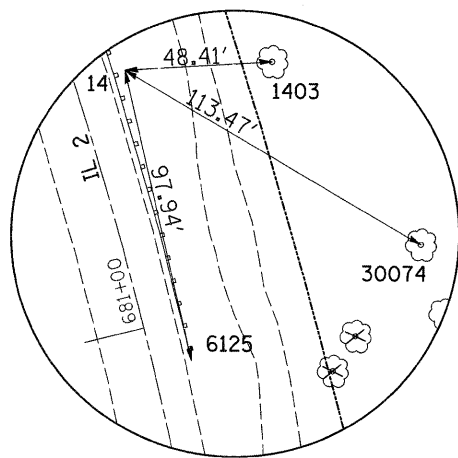
HORIZONTAL CONTROL
POINT NO. 13



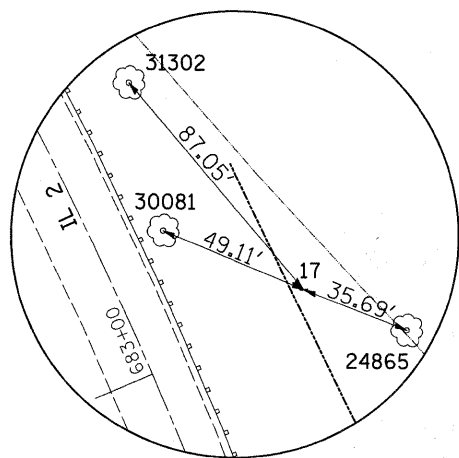
HORIZONTAL CONTROL
POINT NO. 14



HORIZONTAL CONTROL
POINT NO. 15



HORIZONTAL CONTROL
POINT NO. 16



HORIZONTAL CONTROL
POINT NO. 17

REFERENCE TIES				
POINT	CHAIN	STATION	OFFSET	DESCRIPTION
1400	EXIL2	622+80.74	29.25' LT	TREE DECIDUOUS
1401	EXIL2	635+49.93	28.32' LT	CROSS-CUT IN HEADWALL
1402	EXIL2	654+35.63	23.28' LT	CROSS-CUT IN HEADWALL
1403	EXIL2	681+71.11	64.04' RT	RAILROAD SPIKE IN TREE
4094	EXIL2	679+33.49	10.36' RT	CULVERT PIPE
6125	EXIL2	680+86.12	12.70' RT	GUARDRAIL STEEL PLATE BEAM
24865	EXIL2	682+81.95	80.97' RT	TREE DECIDUOUS
26143	EXIL2	649+50.69	100.48' LT	PIPE CULVERT
30040	EXIL2	622+14.57	85.44' LT	TREE DECIDUOUS
30074	EXIL2	681+04.64	95.92' RT	TREE DECIDUOUS
30081	EXIL2	683+40.63	22.17' RT	TREE DECIDUOUS
30287	EXIL2	621+80.09	29.44' RT	TREE DECIDUOUS
30553	EXIL2	651+09.10	89.49' LT	TREE EVERGREEN
30555	EXIL2	650+70.86	98.49' LT	TREE EVERGREEN
30645	EXIL2	655+41.74	69.72' LT	TREE DECIDUOUS
30646	EXIL2	656+40.02	75.19' LT	TREE DECIDUOUS
31302	EXIL2	683+87.02	33.25' RT	TREE DECIDUOUS
39161	EXIL2	655+15.37	11.16' LT	TREE EVERGREEN

BENCH MARKS							
POINT	NORTH	EAST	ELEVATION	CHAIN	STATION	OFFSET	DESCRIPTION
1400	1953963.3400	725882.7390	683.8990	EXIL2	622+80.74	29.25' LT	TREE DECIDUOUS
1401	1955139.8830	725408.5390	680.1680	EXIL2	635+49.93	28.32' RT	CROSS-CUT IN HEADWALL
1402	1956697.1100	724402.2780	694.4350	EXIL2	654+35.63	23.28' LT	CROSS-CUT IN HEADWALL
1403	1959432.4910	724141.9480	675.7380	EXIL2	681+71.11	64.04' RT	RAILROAD SPIKE IN TREE

HORIZONTAL CONTROL POINTS							
POINT	NORTH	EAST	ELEVATION	CHAIN	STATION	OFFSET	DESCRIPTION
12	1953914.4200	725959.7800	682.2350	EXIL2	622+03.17	18.8241' RT	PHOTO CONTROL HORIZONTAL
13	1955094.8430	725362.0540	683.1500	EXIL2	635+22.10	87.2755' LT	PHOTO CONTROL HORIZONTAL
14	1956320.6500	724525.5390	693.9250	EXIL2	650+43.96	18.1669' LT	PHOTO CONTROL HORIZONTAL
15	1956827.4930	724389.0840	693.8700	EXIL2	655+65.5502	19.2747' LT	PHOTO CONTROL HORIZONTAL
16	1959429.8950	724093.6280	679.1100	EXIL2	681+82.8071	17.1772' RT	PHOTO CONTROL HORIZONTAL
17	1959561.9550	724084.9170	674.2050	EXIL2	683+05.8388	55.7028' RT	PHOTO CONTROL HORIZONTAL

SURVEY WORK POINTS							
POINT	NORTH	EAST	ELEVATION	CHAIN	STATION	OFFSET	DESCRIPTION
1114	1962977.7160	722352.7270	687.5664	EXIL2	722+00.88	28.5631' LT	TRAVERSE STATION
1116	1963393.5480	722555.1440	682.8425	EXIL2	726+58.77	34.4271' RT	TRAVERSE STATION
1121	1966155.8520	724055.1670	691.2700	EXIL2	758+33.93	20.613' RT	PAVEMENT
1104	1957190.0100	724341.8320	691.2470	EXIL2	659+31.11	23.4548' LT	TRAVERSE STATION
1106	1958304.0680	724258.3170	687.2190	EXIL2	670+47.24	24.9648' RT	TRAVERSE STATION

FILE NAME =	USER NAME = cushmanbw	DESIGNED -	REVISED -
ct:\pw_work\VP\IDOT\CUSHMANBW\dms34123\dms34123.dwg		DRAWN -	REVISED -
	PLOT SCALE = 50.0000' / IN.	CHECKED -	REVISED -
	PLOT DATE = Thu Apr 30 15:31:45 2009	DATE -	REVISED -

STATE OF ILLINOIS
DEPARTMENT OF TRANSPORTATION

HORIZONTAL & VERTICAL CONTROL

SCALE: SHEET NO. OF SHEETS STA. TO STA.

F.A.P. RTE. 742	SECTION 37R-3	COUNTY OGLE	TOTAL SHEETS 345	SHEET NO. 56
CONTRACT NO. 84788				
FED. ROAD DIST. NO. [ILLINOIS] FED. AID PROJECT				