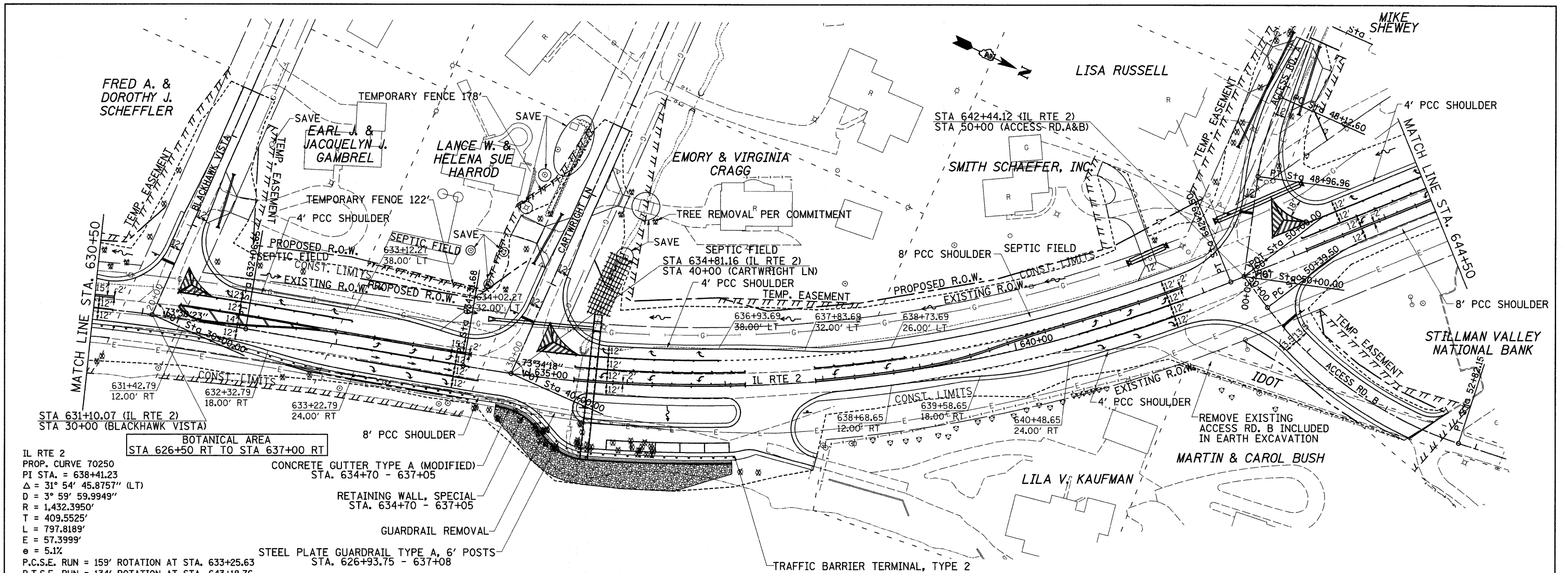
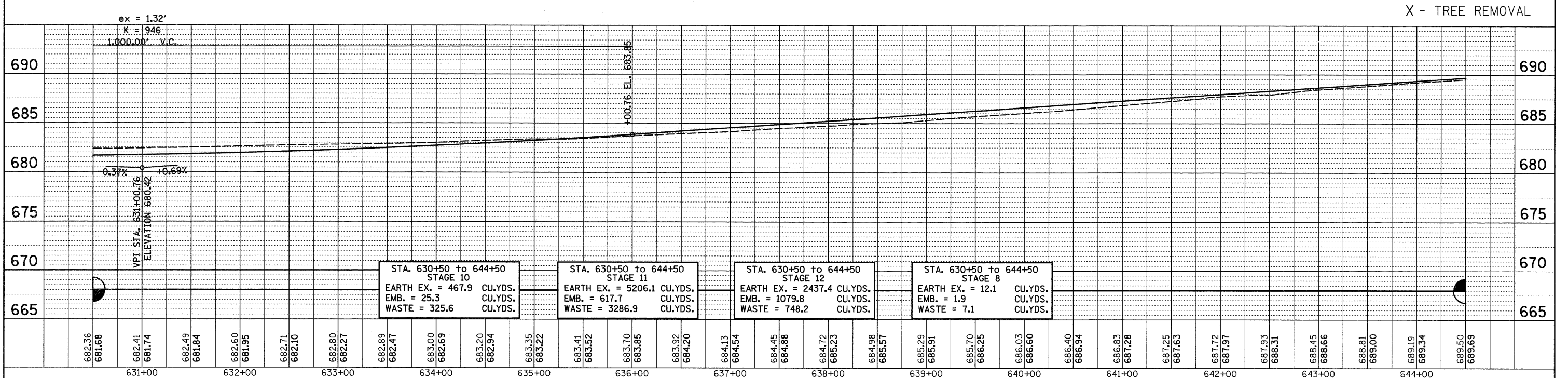


PLAN	SURVEYED	DATE
	PLOTTED	
	CHECKED	
	BY	
	NO.	
	DATE	

PROFILE	SURVEYED	DATE
	PLOTTED	
	CHECKED	
	BY	
	NO.	
	DATE	



IL RTE 2
 PROP. CURVE 70250
 PI STA. = 638+41.23
 $\Delta = 31^\circ 54' 45.8757''$ (LT)
 $D = 3^\circ 59' 59.9949''$
 $R = 1,432.3950'$
 $T = 409.5525'$
 $L = 797.8189'$
 $E = 57.3999'$
 $e = 5.1\%$
 P.C.S.E. RUN = 159' ROTATION AT STA. 633+25.63
 P.T.S.E. RUN = 134' ROTATION AT STA. 643+18.76
 P.C. STA. = 634+31.68
 P.T. STA. = 642+29.50



FILE NAME =	USER NAME = cushmanbw	DESIGNED -	REVISED -	STATE OF ILLINOIS DEPARTMENT OF TRANSPORTATION				PLAN & PROFILE				F.A.P. RTE. 742	SECTION 37R-3	COUNTY OGLE	TOTAL SHEETS 345	SHEET NO. 59
CONTRACT NO. 84788	CONTRACT NO. 84788	DATE	DATE	SCALE:	SHEET NO.	OF SHEETS	STA.	TO STA.	FED. ROAD DIST. NO.	ILLINOIS FED. AID PROJECT						