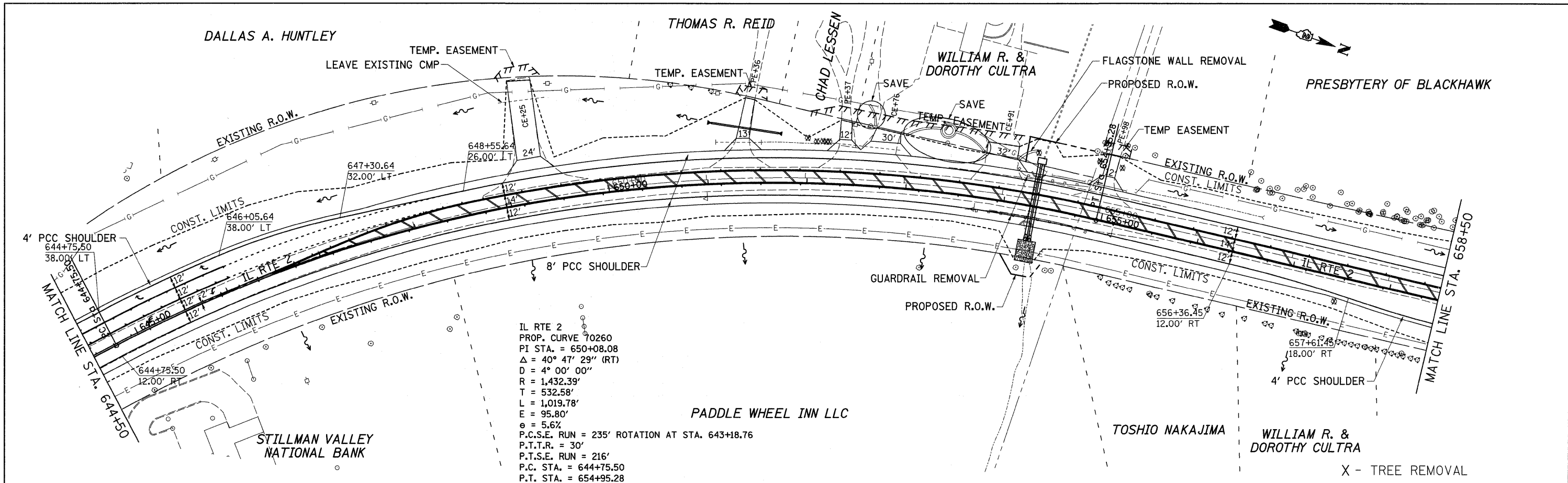
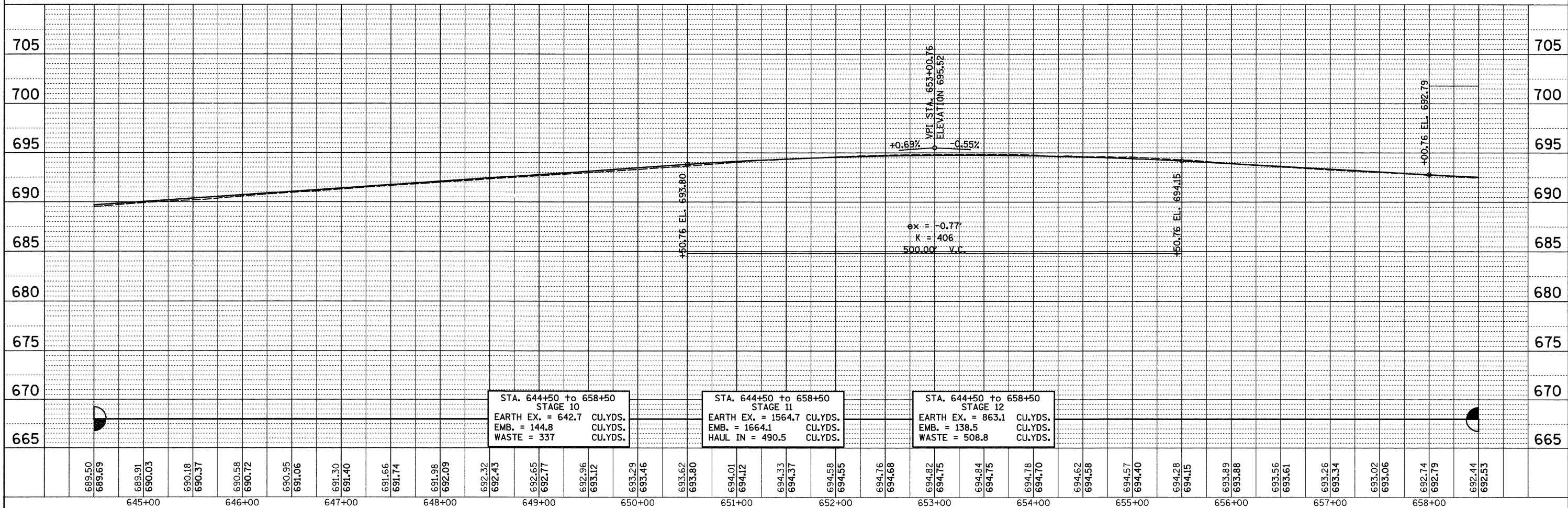


PLAN	SURVEYED	DATE
	PLOTTED	
	CHECKED	
	BY	
	NO. OF MAY CHECKED	
	CADD FILE NAME	
	NO.	

PROFILE	SURVEYED	DATE
	PLOTTED	
	CHECKED	
	BY	
	NO. OF MAY CHECKED	
	STRUCTURE NOTATIONS CHKD	
	NO.	



IL RTE 2
 PROP. CURVE 70260
 PI STA. = 650+08.08
 $\Delta = 40^\circ 47' 29''$ (RT)
 $D = 4^\circ 00' 00''$
 $R = 1,432.39'$
 $T = 532.58'$
 $L = 1,019.78'$
 $E = 95.80'$
 $\theta = 5.6\%$
 P.C.S.E. RUN = 235' ROTATION AT STA. 643+18.76
 P.T.T.R. = 30'
 P.T.S.E. RUN = 216'
 P.C. STA. = 644+75.50
 P.T. STA. = 654+95.28



FILE NAME =	USER NAME = cushmanbw	DESIGNED -	REVISED -	F.A.P. RTE. 742	SECTION 37R-3	COUNTY OGLE	TOTAL SHEETS 345	SHEET NO. 60
STATE OF ILLINOIS DEPARTMENT OF TRANSPORTATION				PLAN & PROFILE		CONTRACT NO. 84788		
PLOT SCALE = 50.0000' / IN. PLOT DATE = Thu Apr 30 15:38:57 2009				SCALE:		SHEET NO. OF SHEETS STA. TO STA.		
CHECKED - DATE -				FED. ROAD DIST. NO. (ILLINOIS) FED. AID PROJECT				