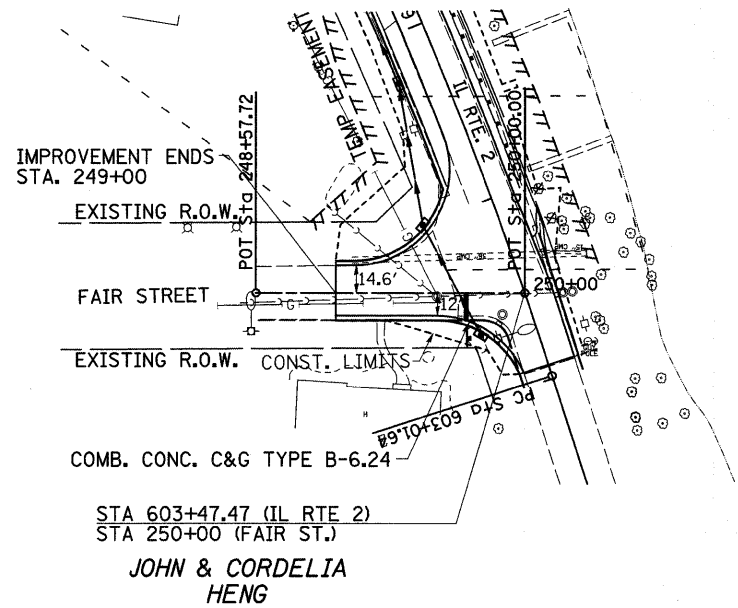


# FAIR ST.



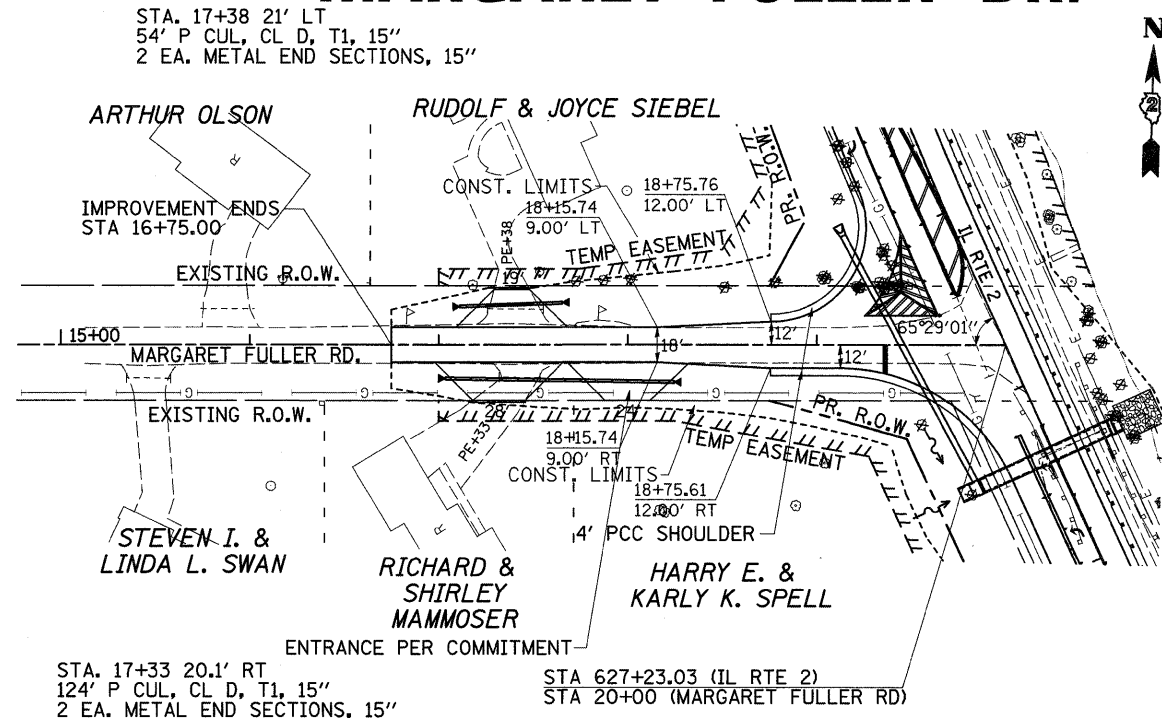
COMB. CONC. C&G TYPE B-6.24

STA 603+47.47 (IL RTE 2)  
STA 250+00 (FAIR ST.)

JOHN & CORDELIA  
HENG

X - TREE REMOVAL

# MARGARET FULLER DR.



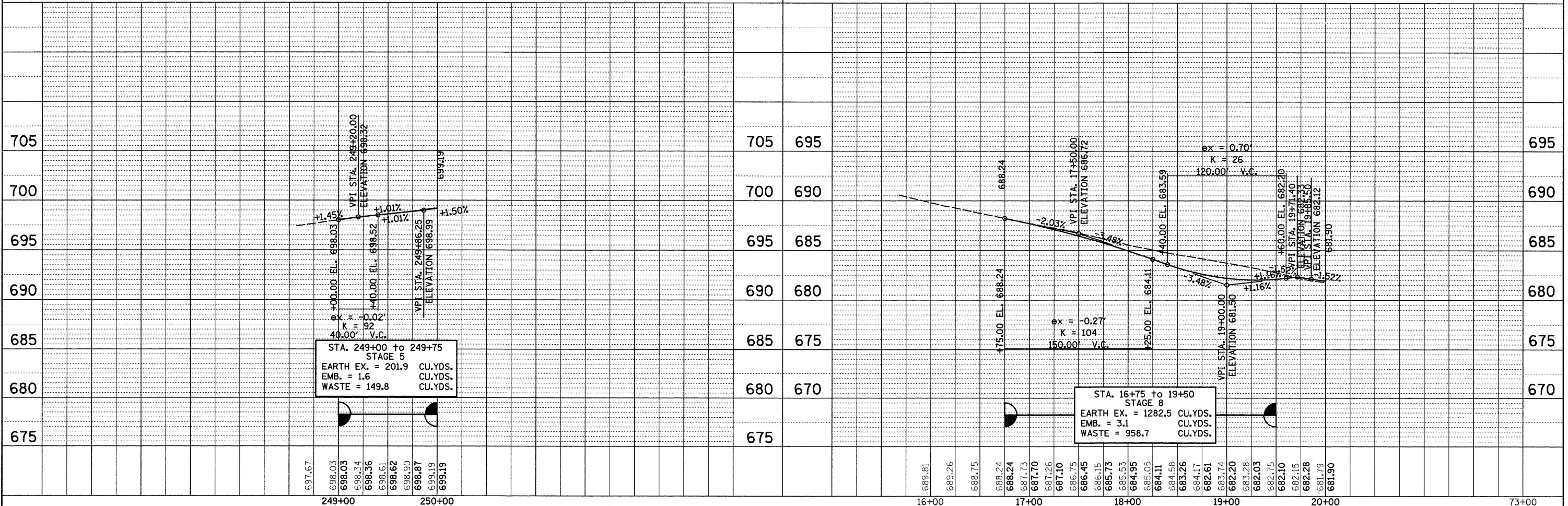
STA. 17+33 20.1' RT  
124' P CUL, CL D, T1, 15"  
2 EA. METAL END SECTIONS, 15"

STA 627+23.03 (IL RTE 2)  
STA 20+00 (MARGARET FULLER RD)

X - TREE REMOVAL

PLAN	SURVEYED	BY	DATE
	PLOTTED		
	NOTED		
	REVISIONS		
	CADD FILE NAME		

PROFILE	SURVEYED	BY	DATE
	PLOTTED		
	NOTED		
	REVISIONS		
	STRUCTURE NOTATIONS		



FILE NAME =	USER NAME = cushmanbw	DESIGNED -	REVISED -	<b>STATE OF ILLINOIS DEPARTMENT OF TRANSPORTATION</b>	<b>PLAN &amp; PROFILE</b>				F.A.P. RTE. 742	SECTION 37R-3	COUNTY OGLE	TOTAL SHEETS 345	SHEET NO. 63
ca:\pwwork\p\fidot\CUSHMANBW\dms34123\vd26186p1n3.dgn		DRAWN -	REVISED -		SCALE:	SHEET NO.	OF	SHEETS	STA.	TO STA.	CONTRACT NO.		
PLOT SCALE = 50.0000' / IN.		CHECKED -	REVISED -		FED. ROAD DIST. NO. [ILLINOIS] FED. AID PROJECT								
PLOT DATE = Thu Apr 30 15:44:29 2009		DATE	REVISED -										