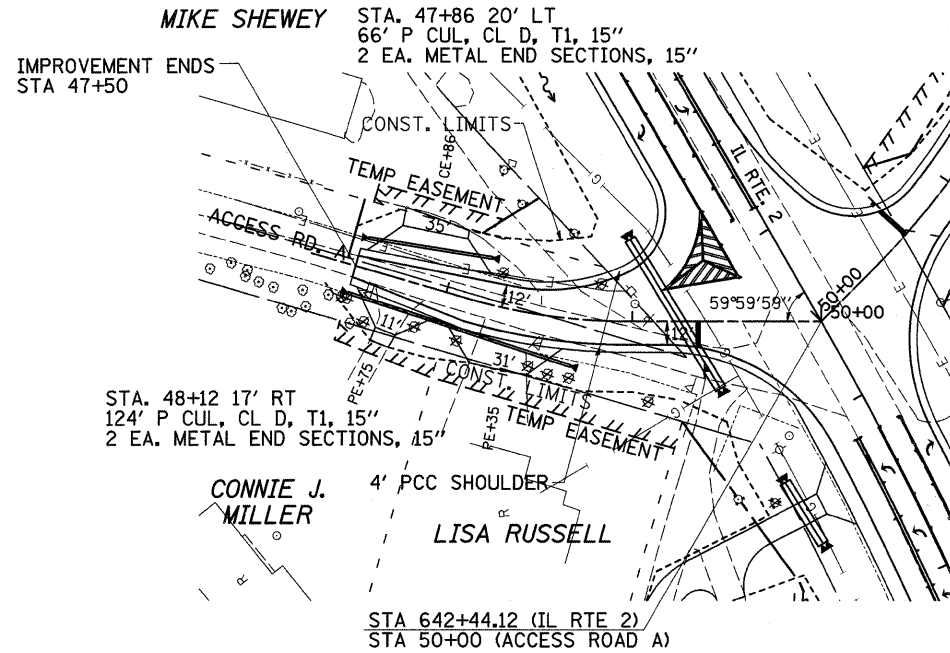
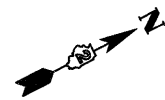
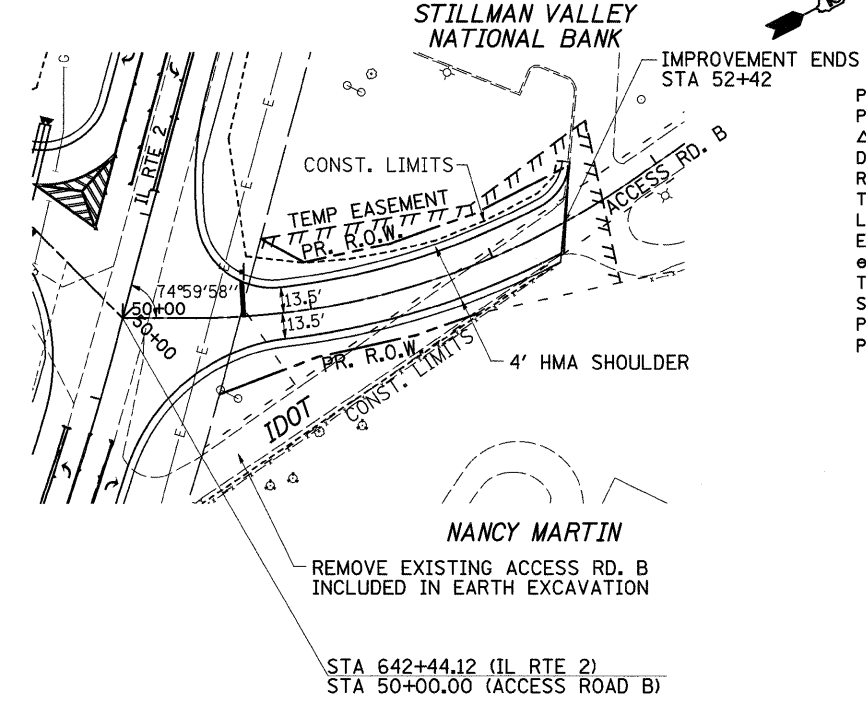


ACCESS ROAD A



PROP. CURVE 71340
 PI STA. = 48+55.06
 $\Delta = 16^\circ 06' 47''$ (LT)
 $D = 19^\circ 05' 55''$
 $R = 300.00'$
 $T = 42.46'$
 $L = 84.37'$
 $E = 2.99'$
 $e = \text{---}$
 $T.R. = \text{---}$
 $S.E. RUN = \text{---}$
 $P.C. STA. = 48+12.60$
 $P.T. STA. = 48+96.96$

ACCESS ROAD B



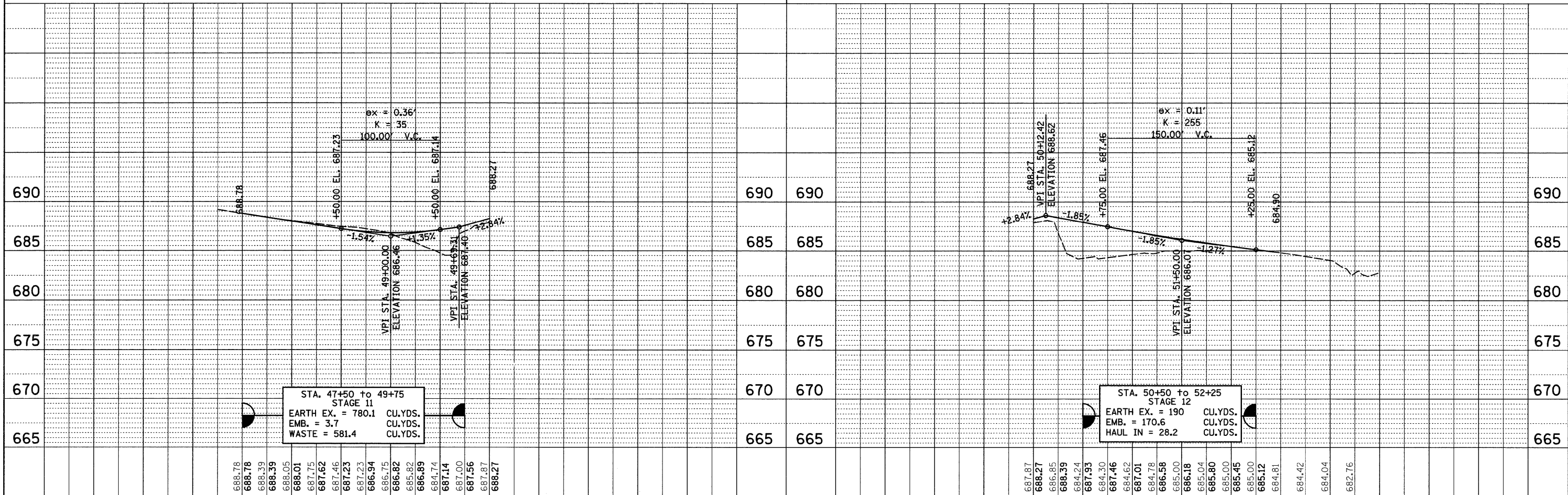
PROP. CURVE 71350
 PI STA. = 51+64.69
 $\Delta = 34^\circ 45' 24''$ (LT)
 $D = 14^\circ 19' 26''$
 $R = 400.00'$
 $T = 125.19'$
 $L = 242.65'$
 $E = 19.13'$
 $e = \text{---}$
 $T.R. = \text{---}$
 $S.E. RUN = \text{---}$
 $P.C. STA. = 50+39.50$
 $P.T. STA. = 52+82.15$

X - TREE REMOVAL

X - TREE REMOVAL

DATE	
BY	
SURVEYED	
PLOTTED	
NOTED	
NO.	

DATE	
BY	
SURVEYED	
PLOTTED	
NOTED	
NO.	



STA. 47+50 to 49+75
 STAGE 11
 EARTH EX. = 780.1 CU.YDS.
 EMB. = 3.7 CU.YDS.
 WASTE = 581.4 CU.YDS.

STA. 50+50 to 52+25
 STAGE 12
 EARTH EX. = 190 CU.YDS.
 EMB. = 170.6 CU.YDS.
 HAUL IN = 28.2 CU.YDS.

FILE NAME =	USER NAME = cushmanbw	DESIGNED -	REVISED -
ct:\pw\work\FWIDOT\CUSHMANBW\dms34123\106186p1n3.dgn		DRAWN -	REVISED -
PLOT SCALE = 50.0000' / IN.		CHECKED -	REVISED -
PLOT DATE = Thu Apr 30 15:44:31 2009		DATE -	REVISED -

STATE OF ILLINOIS
 DEPARTMENT OF TRANSPORTATION

PLAN & PROFILE

SCALE:	SHEET NO.	OF	SHEETS	STA.	TO STA.	F.A.P. RTE. 742	SECTION 37R-3	COUNTY OGLE	TOTAL SHEETS 345	SHEET NO. 65	
						FED. ROAD DIST. NO.		ILLINOIS FED. AID PROJECT			