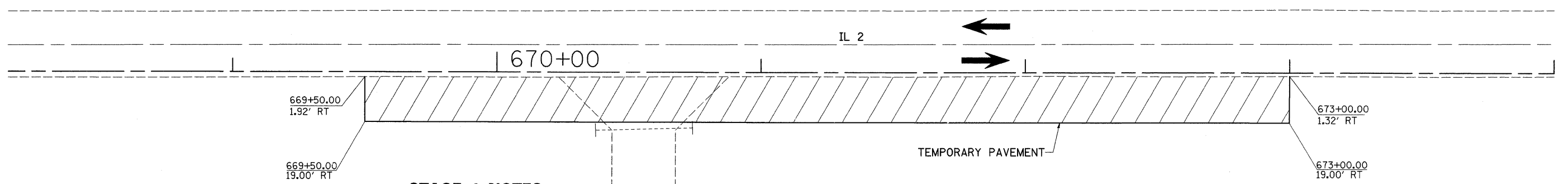


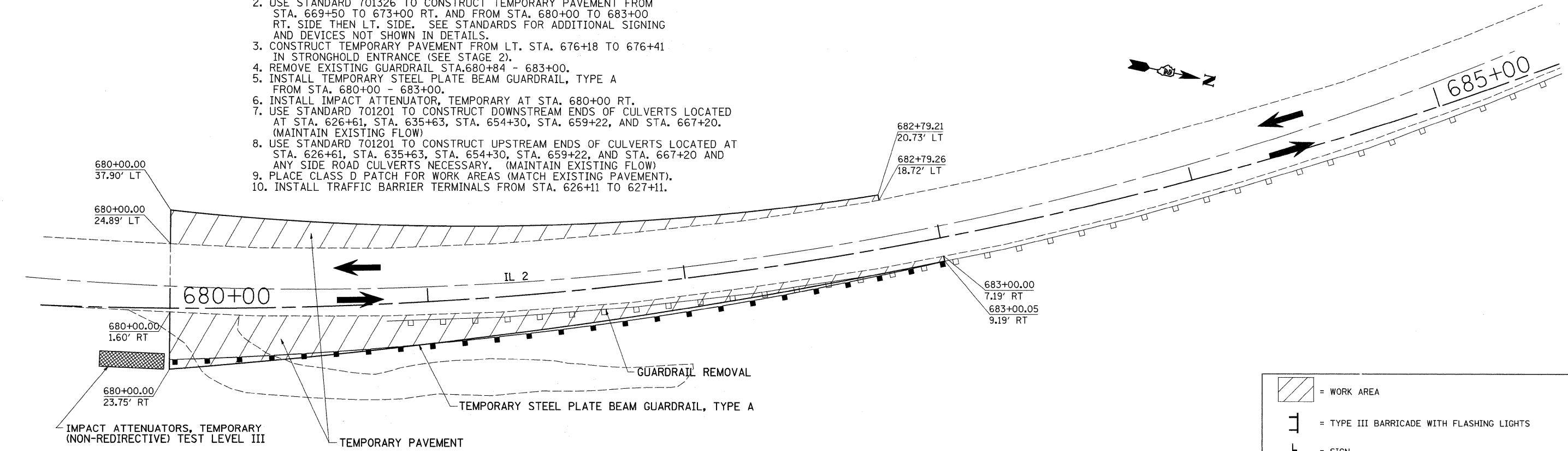
STAGE 1

STA. 603 + 08 - 752 + 50



STAGE 1 NOTES

1. USE STANDARD 701306 TO CONSTRUCT SMART RESURFACING FROM STA. 664+00 TO STA. 752+50. SEE STANDARDS FOR ADDITIONAL SIGNING AND DEVICES NOT SHOWN IN DETAILS.
2. USE STANDARD 701326 TO CONSTRUCT TEMPORARY PAVEMENT FROM STA. 669+50 TO 673+00 RT. AND FROM STA. 680+00 TO 683+00 RT. SIDE THEN LT. SIDE. SEE STANDARDS FOR ADDITIONAL SIGNING AND DEVICES NOT SHOWN IN DETAILS.
3. CONSTRUCT TEMPORARY PAVEMENT FROM LT. STA. 676+18 TO 676+41 IN STRONGHOLD ENTRANCE (SEE STAGE 2).
4. REMOVE EXISTING GUARDRAIL STA.680+84 - 683+00.
5. INSTALL TEMPORARY STEEL PLATE BEAM GUARDRAIL, TYPE A FROM STA. 680+00 - 683+00.
6. INSTALL IMPACT ATTENUATOR, TEMPORARY AT STA. 680+00 RT.
7. USE STANDARD 701201 TO CONSTRUCT DOWNSTREAM ENDS OF CULVERTS LOCATED AT STA. 626+61, STA. 635+63, STA. 654+30, STA. 659+22, AND STA. 667+20. (MAINTAIN EXISTING FLOW)
8. USE STANDARD 701201 TO CONSTRUCT UPSTREAM ENDS OF CULVERTS LOCATED AT STA. 626+61, STA. 635+63, STA. 654+30, STA. 659+22, AND STA. 667+20 AND ANY SIDE ROAD CULVERTS NECESSARY. (MAINTAIN EXISTING FLOW)
9. PLACE CLASS D PATCH FOR WORK AREAS (MATCH EXISTING PAVEMENT).
10. INSTALL TRAFFIC BARRIER TERMINALS FROM STA. 626+11 TO 627+11.



	= WORK AREA
	= TYPE III BARRICADE WITH FLASHING LIGHTS
	= SIGN
	= BARRICADE, OR DRUM WITH STEADY BURNING LIGHTS
	= INDUCTION LOOP DETECTOR
	= TRAFFIC SIGNAL

FILE NAME =	USER NAME = perknsdr	DESIGNED -	REVISED -	STATE OF ILLINOIS	STAGE 1	F.A.P. RTE.	SECTION	COUNTY	TOTAL SHEETS	SHEET NO.
g:\pwork\pwork\perknsdr\dms34123\dms34123.dgn	486stg69.dgn	DRAWN -	REVISED -	DEPARTMENT OF TRANSPORTATION		742	37RS-3	OGLE	345	67
	PLOT SCALE = 20.0000' / IN.	CHECKED -	REVISED -							
	PLOT DATE = Fri Jun 05 14:07:26 2009	DATE -	REVISED -		SCALE:	SHEET NO.	OF	SHEETS	STA.	TO STA.
										CONTRACT NO. 84788
										ILLINOIS FED. AID PROJECT