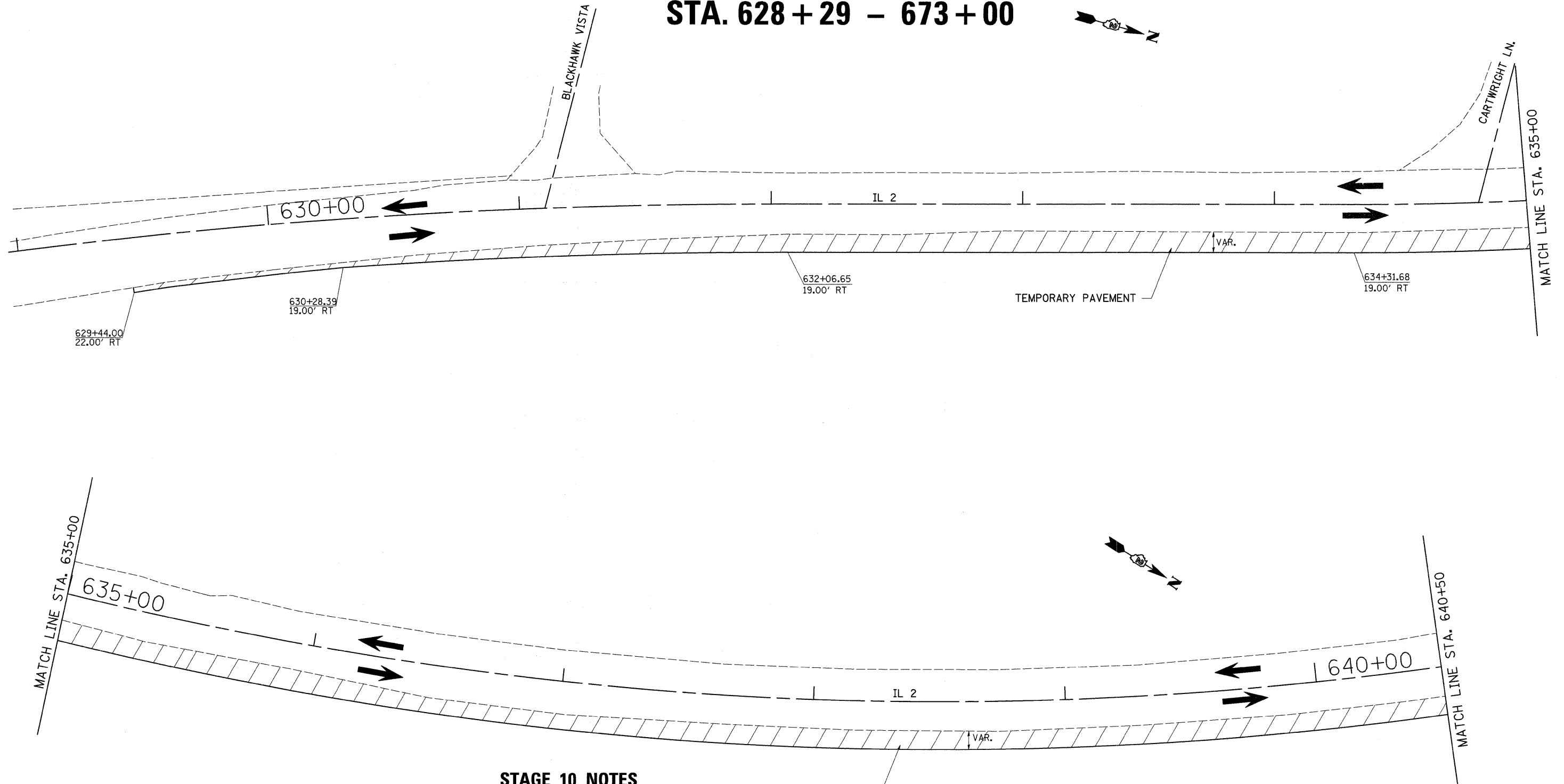


STAGE 10

STA. 628 + 29 - 673 + 00



STAGE 10 NOTES

1. USE STANDARD 701326. SEE STANDARDS FOR ADDITIONAL SIGNING AND DEVICES NOT SHOWN IN DETAILS.
2. CONSTRUCT TEMPORARY PAVEMENT FROM STA. 629+44 TO 669+50.

TEMPORARY PAVEMENT

	= WORK AREA
	= TYPE III BARRICADE WITH FLASHING LIGHTS
	= SIGN

FILE NAME =	USER NAME = cushmanbw	DESIGNED -	REVISED -
es:\pw_work\PWIDOT\CUSHMANBW\dms34123\06486atg69.dgn		DRAWN -	REVISED -
PLOT SCALE = 20.0000' / IN.		CHECKED -	REVISED -
PLOT DATE = Fri May 01 07:36:33 2009		DATE -	REVISED -

STATE OF ILLINOIS
DEPARTMENT OF TRANSPORTATION

STAGE 10

SCALE: SHEET NO. OF SHEETS STA. TO STA.

F.A.P. RTE.	SECTION	COUNTY	TOTAL SHEETS	SHEET NO.
742	37RS-3	OGLE	345	95
CONTRACT NO. 84788				
FED. ROAD DIST. NO. ILLINOIS FED. AID PROJECT				