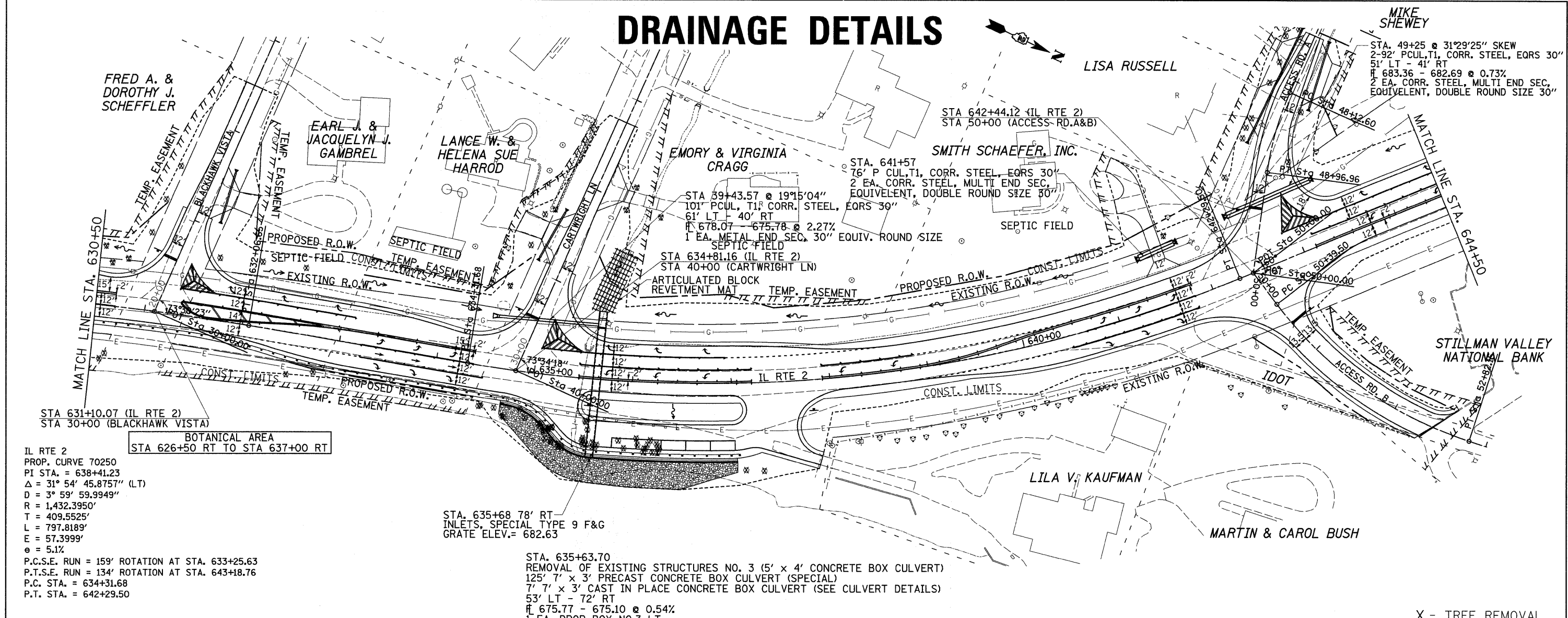


DRAINAGE DETAILS



PLAN	SURVEYED	BY	DATE
	NOTED		
	CHECKED		
	BY		
	NO. OF WAY CHECKED		
	NO.		
	CADD FILE NAME		

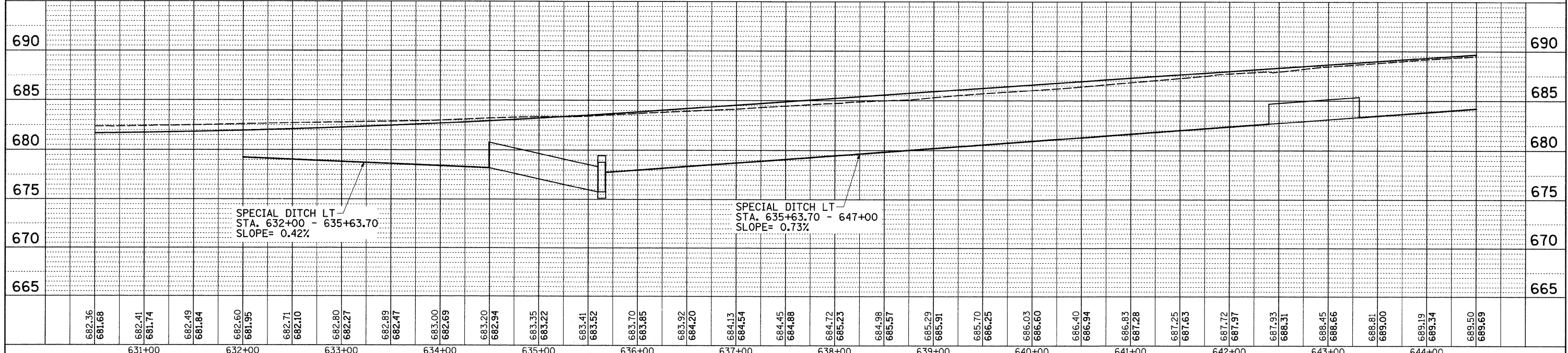
PROFILE	SURVEYED	BY	DATE
	NOTED		
	CHECKED		
	BY		
	NO. OF WAY CHECKED		
	NO.		
	STRUCTURE NOTATIONS CRKD		



IL RTE 2
 PROP. CURVE 70250
 PI STA. = 638+41.23
 $\Delta = 31^\circ 54' 45.8757''$ (LT)
 $D = 3^\circ 59' 59.9949''$
 $R = 1,432.3950'$
 $T = 409.5525'$
 $L = 797.8189'$
 $E = 57.3999'$
 $\epsilon = 5.1\%$
 P.C.S.E. RUN = 159' ROTATION AT STA. 633+25.63
 P.T.S.E. RUN = 134' ROTATION AT STA. 643+18.76
 P.C. STA. = 634+31.68
 P.T. STA. = 642+29.50

STA. 635+68.78' RT
 INLETS, SPECIAL TYPE 9 F&G
 GRATE ELEV.= 682.63

STA. 635+63.70
 REMOVAL OF EXISTING STRUCTURES NO. 3 (5' x 4' CONCRETE BOX CULVERT)
 125' 7' x 3' PRECAST CONCRETE BOX CULVERT (SPECIAL)
 7' 7' x 3' CAST IN PLACE CONCRETE BOX CULVERT (SEE CULVERT DETAILS)
 53' LT - 72' RT
 $\text{H} 675.77 - 675.10 @ 0.54\%$
 1 EA. DROP BOX NO.3 LT



FILE NAME =	USER NAME = cushmanbw	DESIGNED -	REVISED -	F.A.P. RTE.	SECTION	COUNTY	TOTAL SHEETS	SHEET NO.
c:\pw_work\PIWIDOT\CUSHMANBW\dms34123\0808086dr-L.dgn		DRAWN -	REVISED -	742	37R-3	OGLE	345	129
PLOT SCALE = 50.0000' / IN.		CHECKED -	REVISED -	CONTRACT NO. 84788				
PLOT DATE = Fri May 01 08:08:30 2009		DATE -	REVISED -	FED. ROAD DIST. NO. ILLINOIS FED. AID PROJECT				

STATE OF ILLINOIS
 DEPARTMENT OF TRANSPORTATION

DRAINAGE DETAILS

SCALE: SHEET NO. OF SHEETS STA. TO STA.