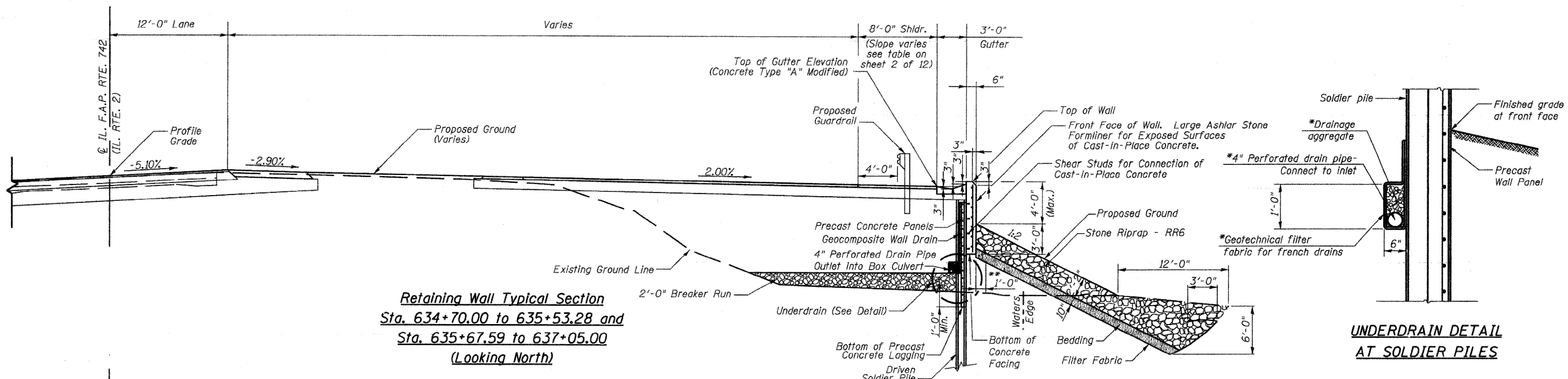
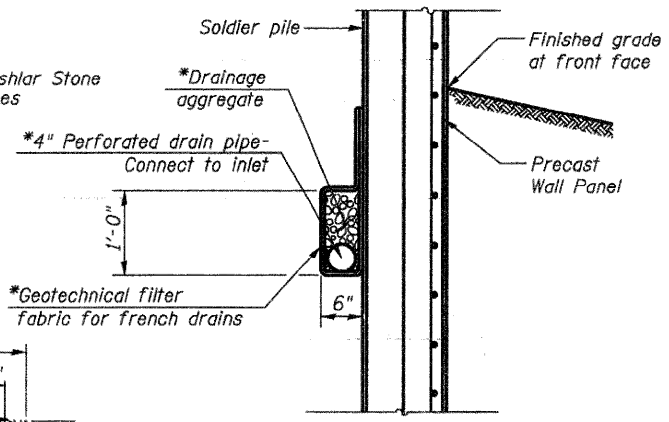


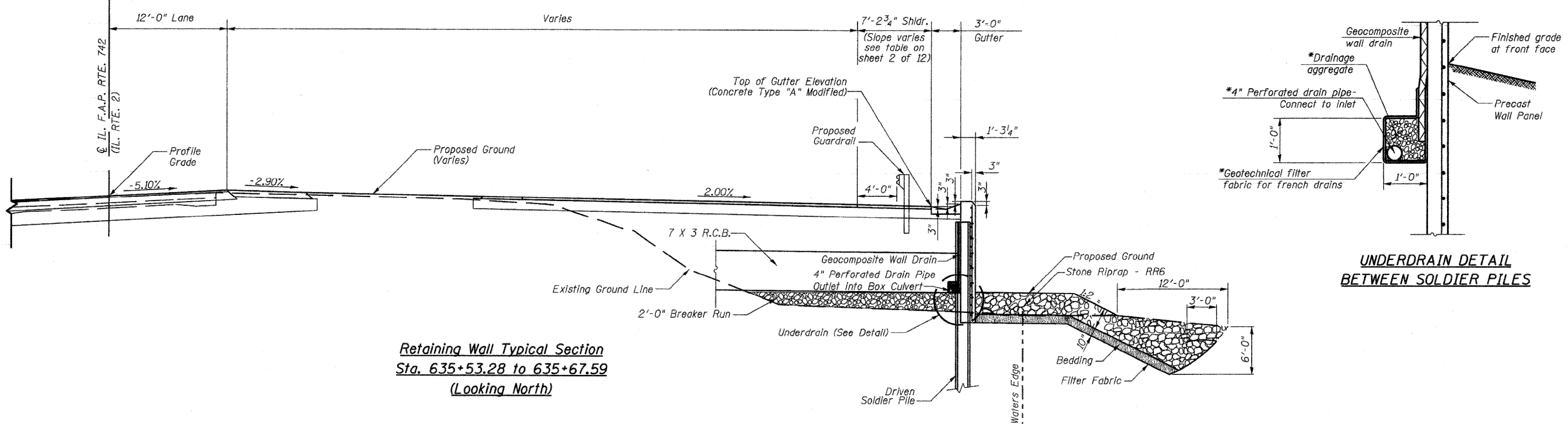
STATE OF ILLINOIS  
DEPARTMENT OF TRANSPORTATION



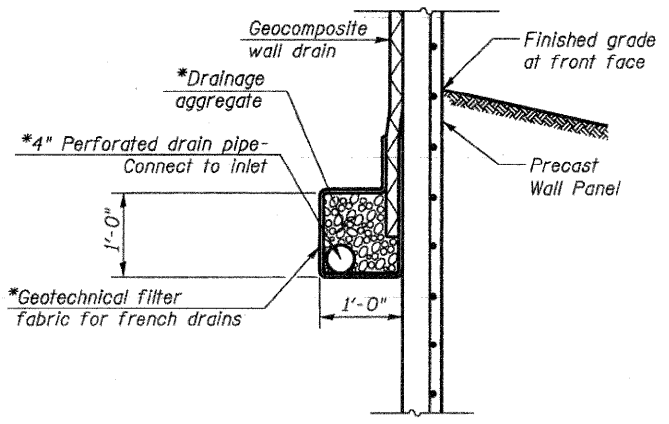
**Retaining Wall Typical Section**  
**Sta. 634+70.00 to 635+53.28 and**  
**Sta. 635+67.59 to 637+05.00**  
**(Looking North)**



**UNDERDRAIN DETAIL**  
**AT SOLDIER PILES**



**Retaining Wall Typical Section**  
**Sta. 635+53.28 to 635+67.59**  
**(Looking North)**



**UNDERDRAIN DETAIL**  
**BETWEEN SOLDIER PILES**

Note:  
See Sheet 4 of 12 for H-Pile location and spacing.

\* Included in the cost of pipe underdrains for structures.

\*\* Exposed height of precast panels shall not exceed 7'-0" during construction of wall. Fill shall be placed on both sides of wall in order to place additional panels.

**WALL SECTIONS**  
**IL. RTE. 2**  
**RETAINING WALL B**  
**STA. 634+70.00 TO STA. 637+05.00**

DESIGNED	DFM
CHECKED	DSG
DRAWN	DSG
CHECKED	DFM

Howard R. Green Company

SHEET NO. 3	F.A.P. RTE.	SECTION	COUNTY	TOTAL SHEETS	SHEET NO.
	742	37 R-3	OGLE	345	163
12 SHEETS	SN 071-7002		CONTRACT NO. 84788		
FED. ROAD DIST. NO. 7 ILLINOIS FED. AID PROJECT					