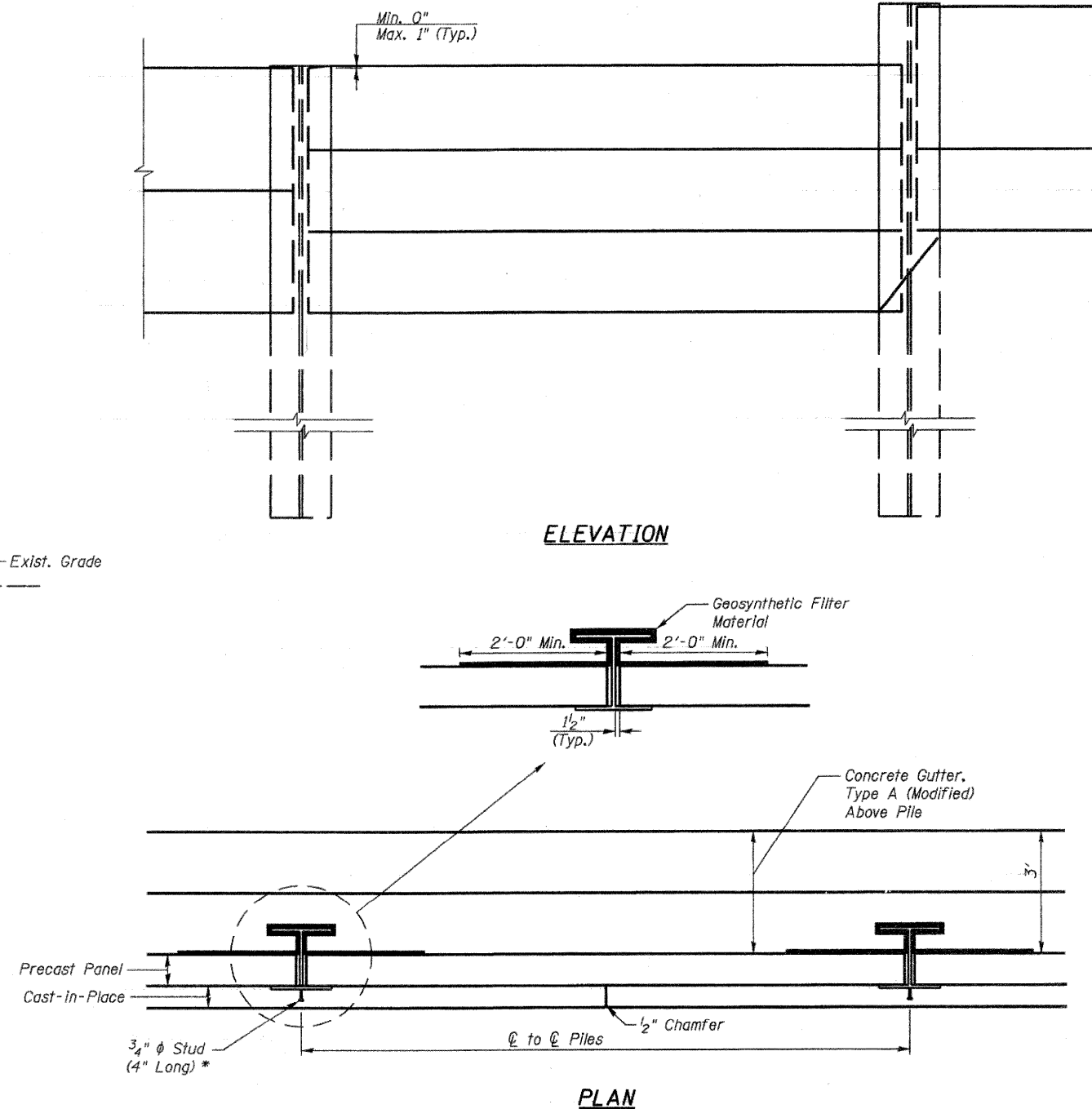
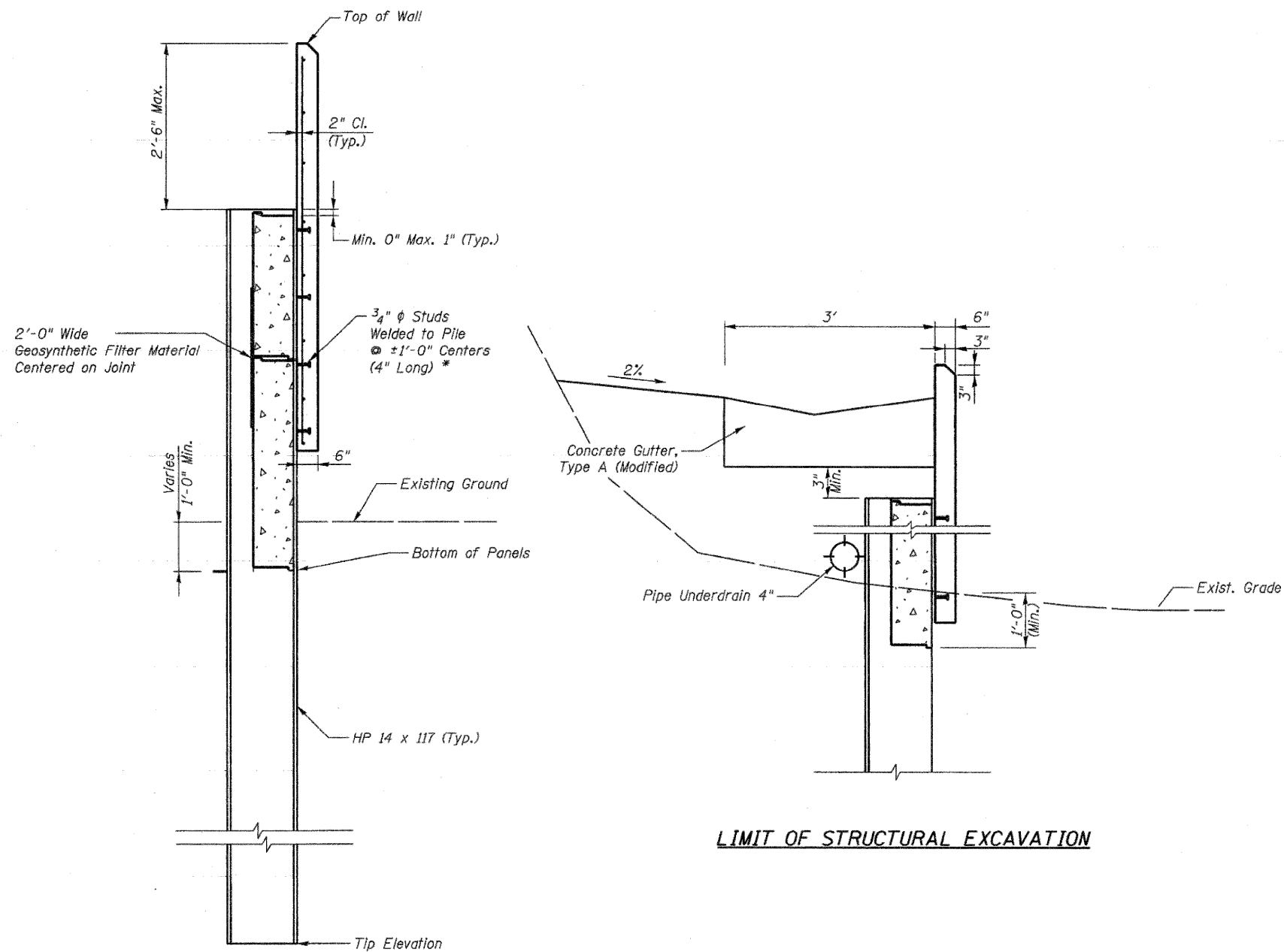


STATE OF ILLINOIS  
DEPARTMENT OF TRANSPORTATION



\* Incidental to "Concrete Structures"

**WALL DETAILS**  
**IL. RTE. 2**  
**RETAINING WALL B**  
**STA. 634+70.00 TO STA. 637+05.00**

DESIGNED	DFM
CHECKED	DSG
DRAWN	DSG
CHECKED	DFM

Howard R. Green Company

SHEET NO. 6 12 SHEETS	F.A.P. RTE. 742	SECTION 37 R-3	COUNTY OGLE	TOTAL SHEETS 345	SHEET NO. 166
	SN 071-7002		CONTRACT NO. 84788		
FED. ROAD DIST. NO. 7 ILLINOIS FED. AID PROJECT					