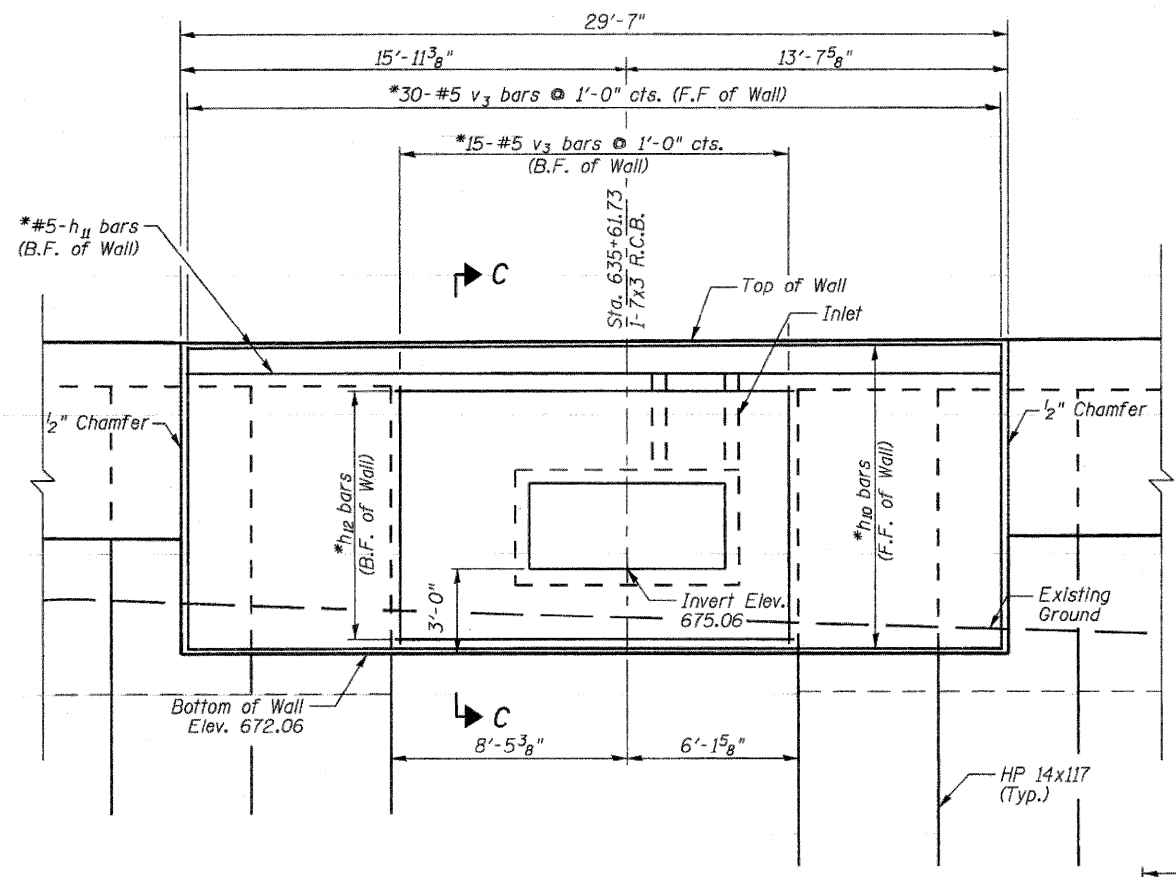
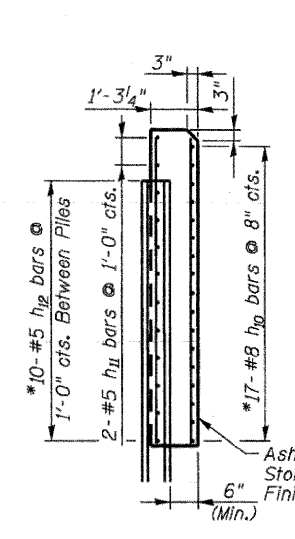


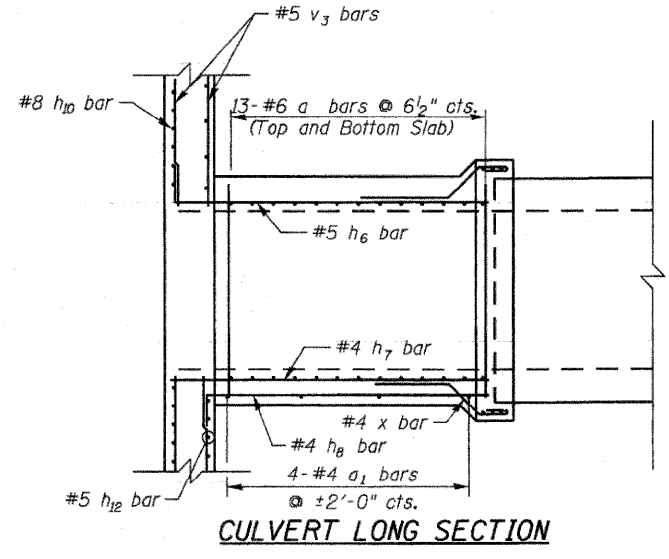
STATE OF ILLINOIS
DEPARTMENT OF TRANSPORTATION



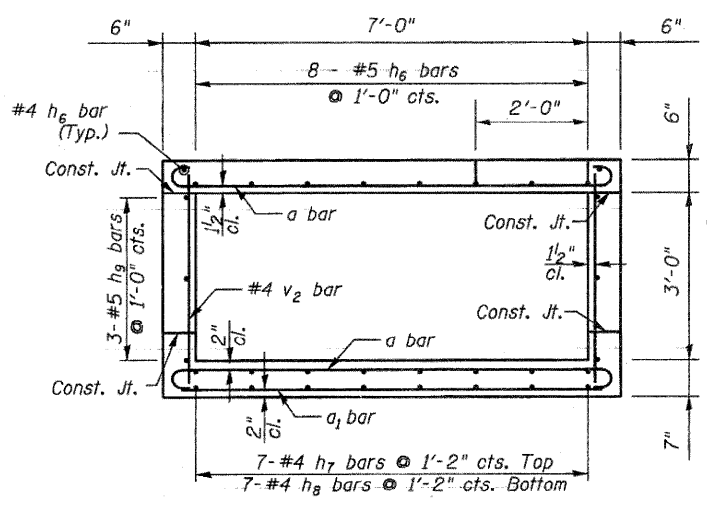
WALL ELEVATION



SECTION C-C



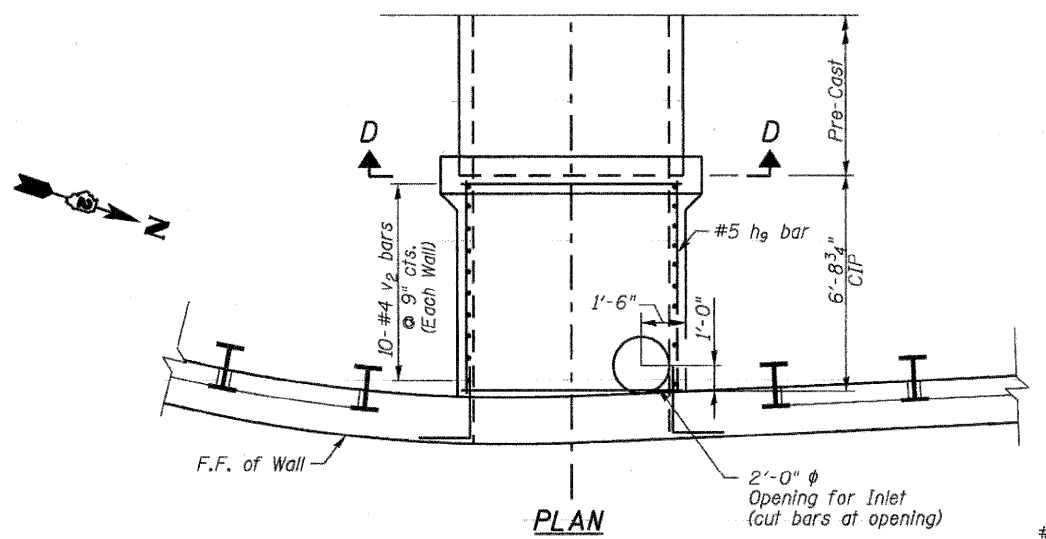
CULVERT LONG SECTION



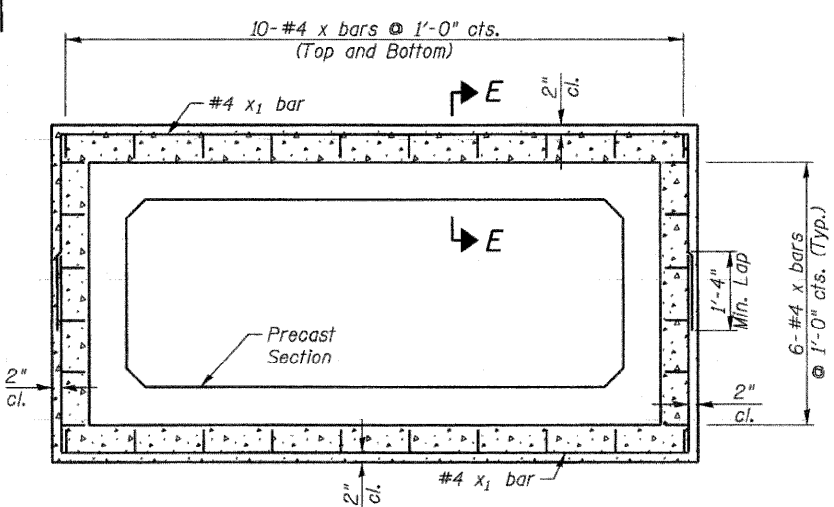
SECTION THROUGH BARREL

BILL OF MATERIAL

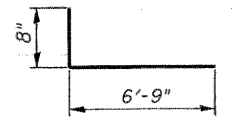
Bar	No.	Size	Length	Shape
a	26	#6	9'-4"	U
a1	4	#4	7'-3"	—
h6	10	#5	8'-6"	L
h7	7	#4	7'-8"	—
h8	7	#4	7'-5"	L
h9	6	#5	8'-6"	L
h10	17	#8	29'-4"	—
h11	2	#5	29'-4"	—
h12	10	#5	14'-3"	—
v2	20	#4	3'-10"	—
v3	45	#5	10'-10"	—
x	32	#4	4'-10"	U
x1	6	#4	15'-6"	L
Concrete Structures			Cu. Yd.	14.2
Reinforcement Bars			Pound	2860



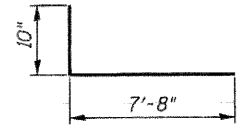
PLAN



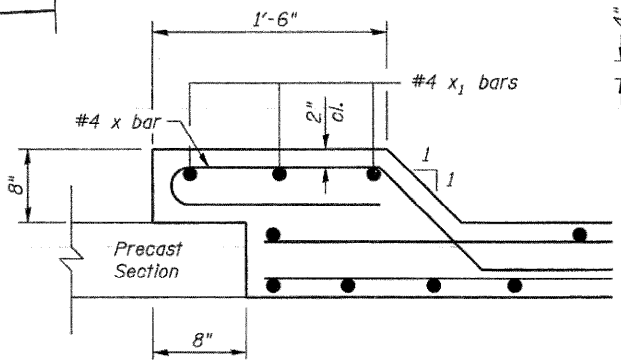
SECTION D-D



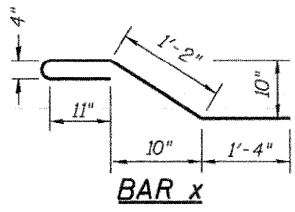
BAR h8



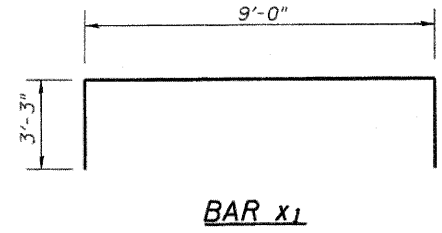
BAR h6 & h9



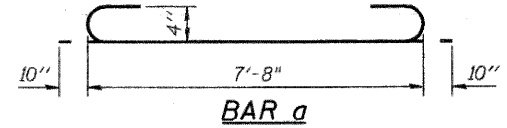
SECTION E-E



BAR x



BAR x1



BAR a

NOTES

Offsets are measures from the @ IL. Rte. 2 to the front face of wall.

F.F. = Front Face
B.F. = Back Face

Field Cut bars intersecting Culvert and 2'-0" opening for inlet.

WALL AND CULVERT DETAILS

IL. RTE. 2
RETAINING WALL B
STA. 634+70.00 TO STA. 637+05.00

DESIGNED	DFM
CHECKED	DSG
DRAWN	EBS
CHECKED	DFM

SHEET NO. 7 12 SHEETS	F.A.P. RTE. 742	SECTION 37 R-3	COUNTY OGLE	TOTAL SHEETS 345	SHEET NO. 167
	SN 071-7002		CONTRACT NO. 84788		
FED. ROAD DIST. NO. 7 ILLINOIS FED. AID PROJECT					