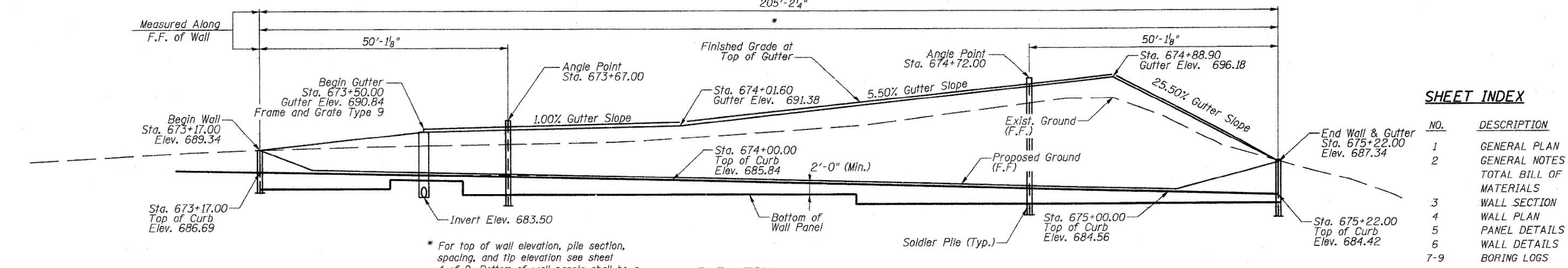


Benchmark: Railroad Spike in Tree Sta. 681+71.11, 64.04' Rt., Elev. = 675.7380
 Existing Structure: None

STATE OF ILLINOIS
 DEPARTMENT OF TRANSPORTATION

205'-2 1/4"

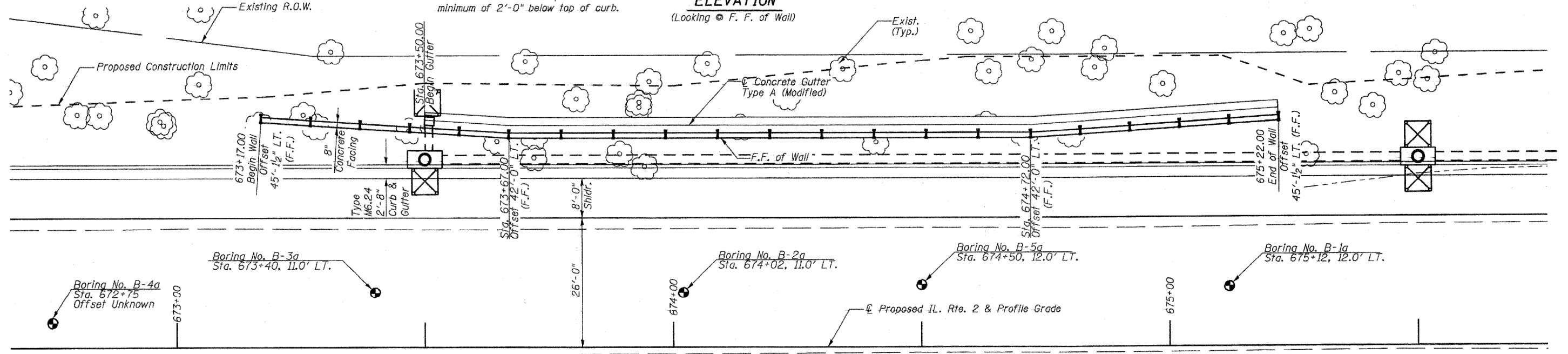


SHEET INDEX

NO.	DESCRIPTION
1	GENERAL PLAN
2	GENERAL NOTES & TOTAL BILL OF MATERIALS
3	WALL SECTION
4	WALL PLAN
5	PANEL DETAILS
6	WALL DETAILS
7-9	BORING LOGS

* For top of wall elevation, pile section, spacing, and tip elevation see sheet 4 of 9. Bottom of wall panels shall be a minimum of 2'-0" below top of curb.

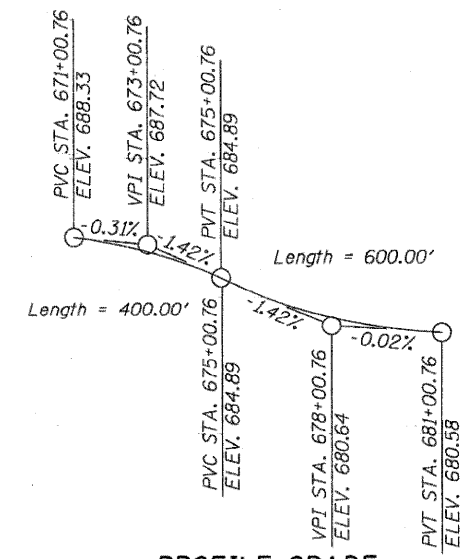
ELEVATION
 (Looking @ F. F. of Wall)



PLAN

CURVE DATA
 (IL. Rte. 2)

P.I. STA = 682+45.19
 $\Delta = 27^\circ 33' 30''$ (LT.)
 $D = 3^\circ 49' 11''$
 $R = 1,500.00'$
 $T = 367.86'$
 $L = 721.48'$
 $E = 44.45'$
 P.C. STA = 678+77.33
 P.T. STA = 685+98.81
 Wall not in Curve



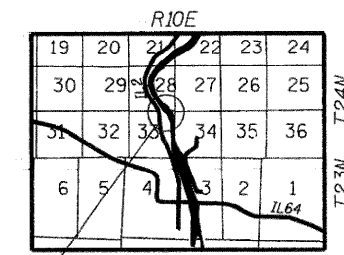
PROFILE GRADE
 (Along @ Proposed IL. Rte. 2)

NOTES

Offsets are measures from the @ IL. Rte. 2 to the front face of wall.

See sheet 2 of 9 for Bill of Materials.

F.F. = Front Face
 B.F. = Back Face



LOCATION SKETCH

David F. Maxwell, S.E.
 Reg. No. 081-005455
 Date: 3/25/09
 My registration expires November 30, 2010.

APPROVED
 FOR STRUCTURAL ADEQUACY ONLY

Ralph E. Anderson
 ENGINEER

GENERAL PLAN
IL. RTE. 2
RETAINING WALL C
STA. 673+17.00 TO STA. 675+22.00

DESIGNED	DFM
CHECKED	DSG
DRAWN	DSG
CHECKED	DFM

SHEET NO. 1	F.A.P. RTE.	SECTION	COUNTY	TOTAL SHEETS	SHEET NO.
9 SHEETS	742	37 R-3	OGLE	345	173
SN 071-7001			CONTRACT NO. 84788		
FED. ROAD DIST. NO. 7 ILLINOIS FED. AID PROJECT					

Howard R. Green Company