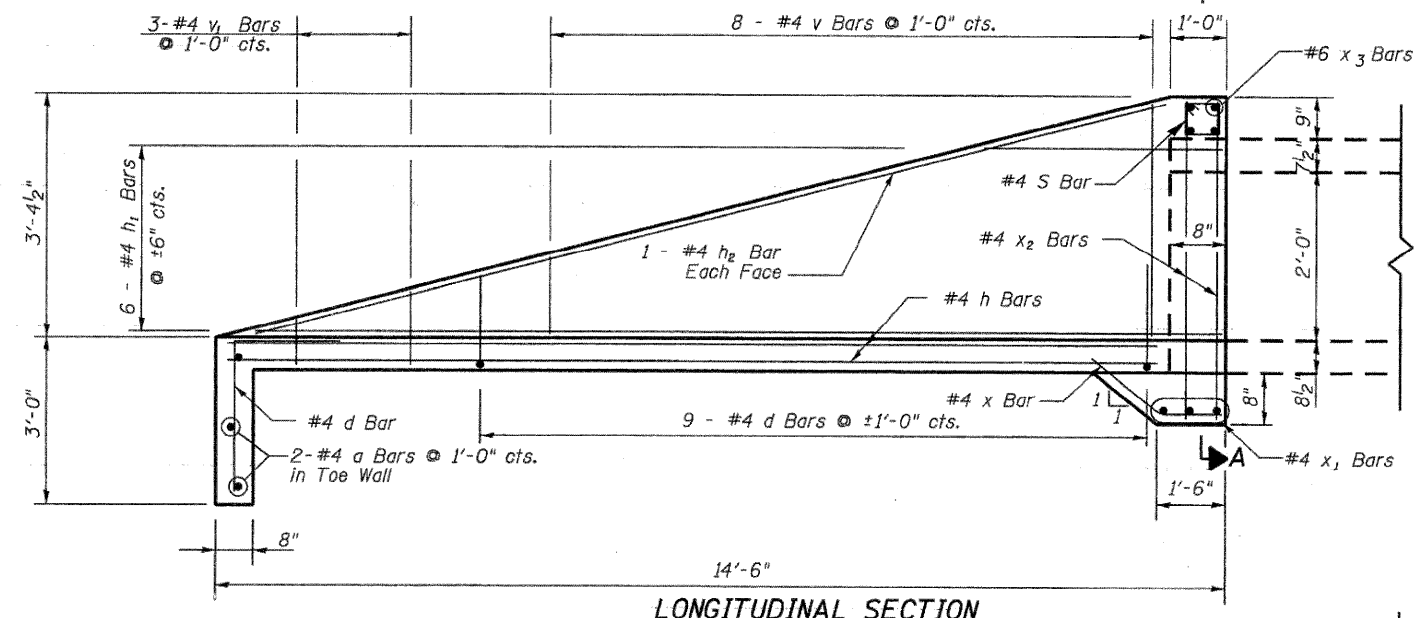
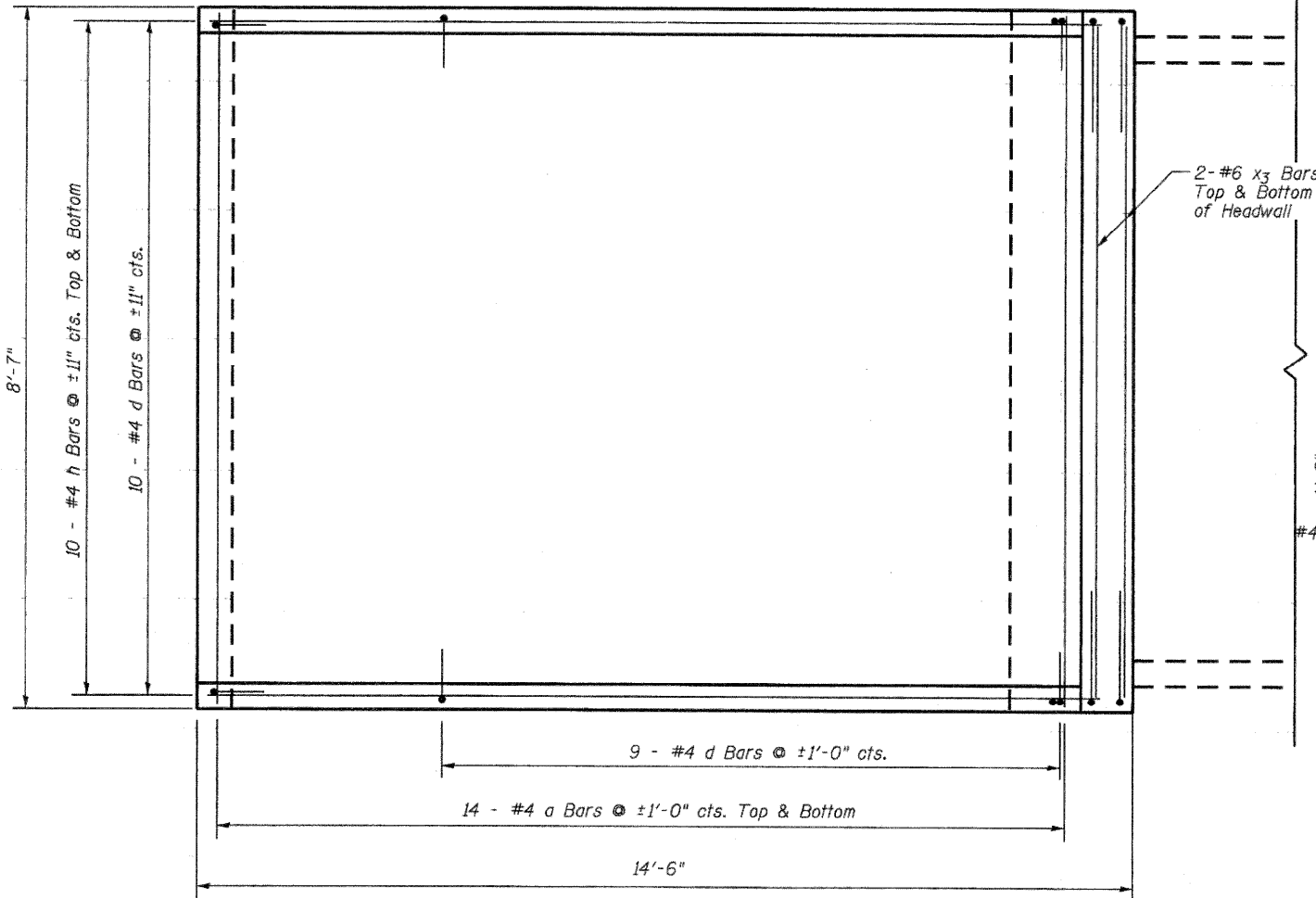


STATE OF ILLINOIS
DEPARTMENT OF TRANSPORTATION

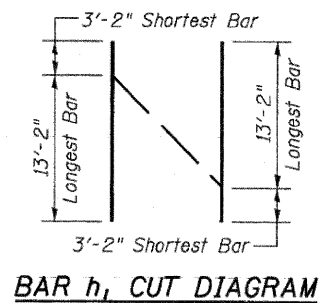


LONGITUDINAL SECTION

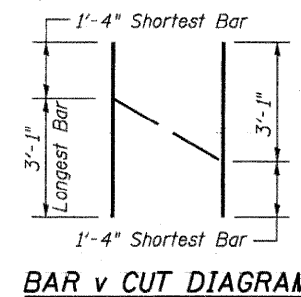


PLAN VIEW

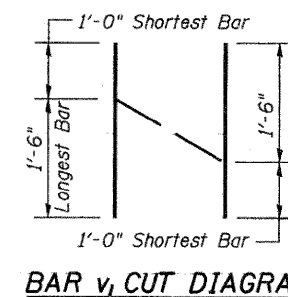
DESIGNED	CTH
CHECKED	DSG
DRAWN	EBS
CHECKED	DFM



BAR h₁ CUT DIAGRAM



BAR v CUT DIAGRAM

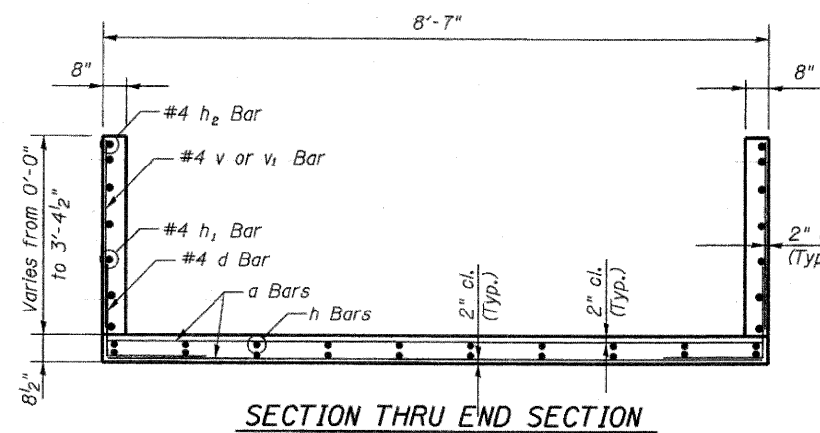


BAR v₁ CUT DIAGRAM

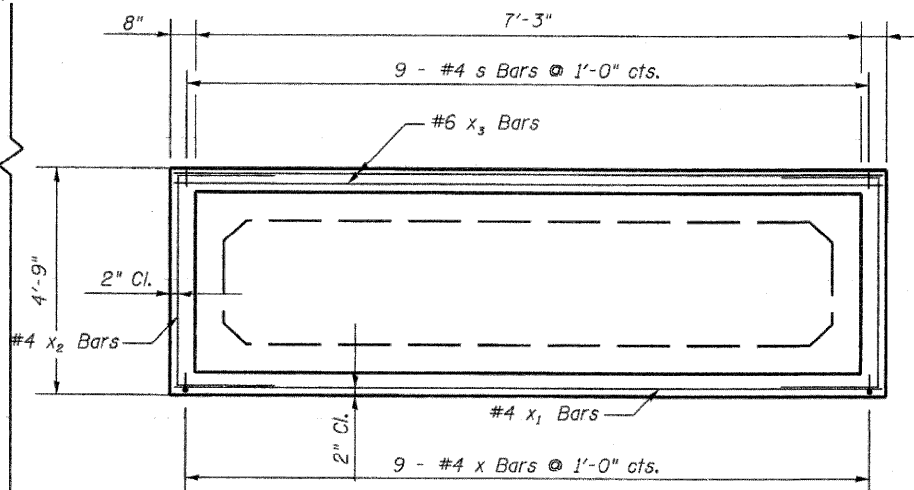
BILL OF MATERIALS *

BAR	NO.	SIZE	LENGTH	SHAPE	
a	30	#4	8'-4"	—	
d	28	#4	4'-6"	┌	
h	20	#4	13'-7"	—	
h ₁	6	#4	16'-4"	—	
h ₂	2	#4	12'-8"	—	
s	9	#4	3'-3"	□	
v	8	#4	4'-5"	—	
v ₁	3	#4	2'-6"	—	
x	9	#4	2'-9"	—	
x ₁	3	#4	8'-4"	—	
x ₂	4	#4	8'-0"	┌	
x ₃	4	#6	8'-4"	—	
			Concrete Box Culverts	Cu. Yd.	5.6
			Reinforcement Bars	Pound	668

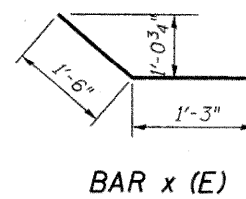
* Quantities are for 1 End Section.



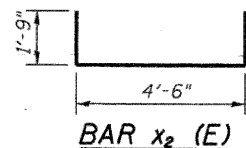
SECTION THRU END SECTION



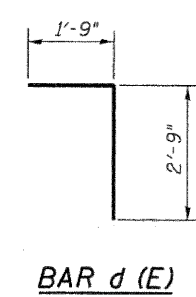
SECTION A-A



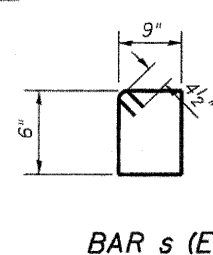
BAR x (E)



BAR x₂ (E)



BAR d (E)



BAR s (E)

END SECTION DETAILS
IL. RTE. 2 OVER
TRIBUTARY TO ROCK RIVER
STA. 659+22.00

Howard R. Green Company

SHEET NO. 2 3 SHEETS	F.A.P. RTE. 742	SECTION 37 R-3	COUNTY OGLE	TOTAL SHEETS 345	SHEET NO. 187
	SN 071-1126		CONTRACT NO. 84788		
FED. ROAD DIST. NO. 7 ILLINOIS FED. AID PROJECT					