

STATE OF ILLINOIS  
DEPARTMENT OF TRANSPORTATION

Benchmark: Railroad Spike in Tree at Sta. 681+71.11, 64.04' LT. Elev. = 675.738  
Existing Structure: Built in 1923 as a Single Barrel 12'-0" X 3'-0" R.C. Box Culvert, at proposed IL. Rte. 2 station 677+97 with a Culvert Length of ±32'-0". Traffic to be Maintained Utilizing Stage Construction. No Salvage.

DESIGN STRESSES

Field Units  
f<sub>y</sub> = 60,000 psi  
f'<sub>c</sub> = 3,500 psi

SHEET INDEX

NO.	DESCRIPTION
1	GENERAL PLAN & ELEVATION
2	GENERAL NOTES & TOTAL BILL OF MATERIAL
3	STAGING PLAN
4	TEMPORARY CONCRETE BARRIER
5	CULVERT DETAILS
6	BAR SPlicer ASSEMBLY DETAILS
7	BORING LOG

DESIGN SPECIFICATIONS

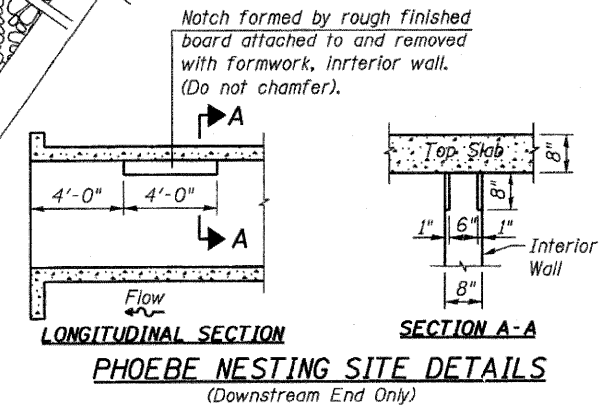
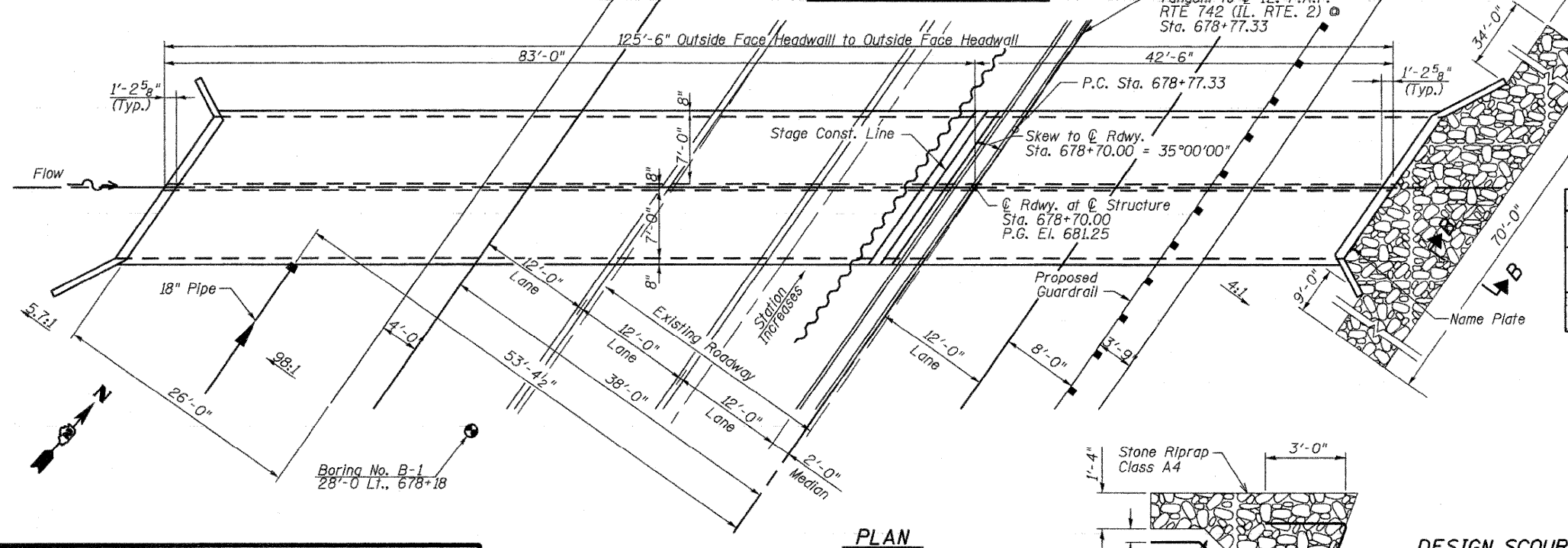
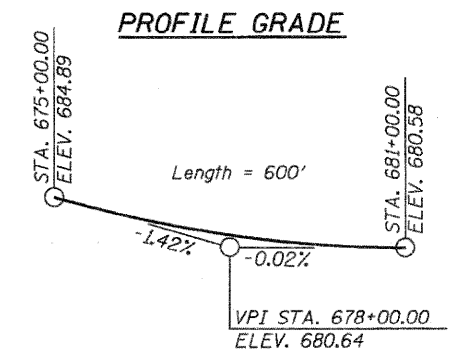
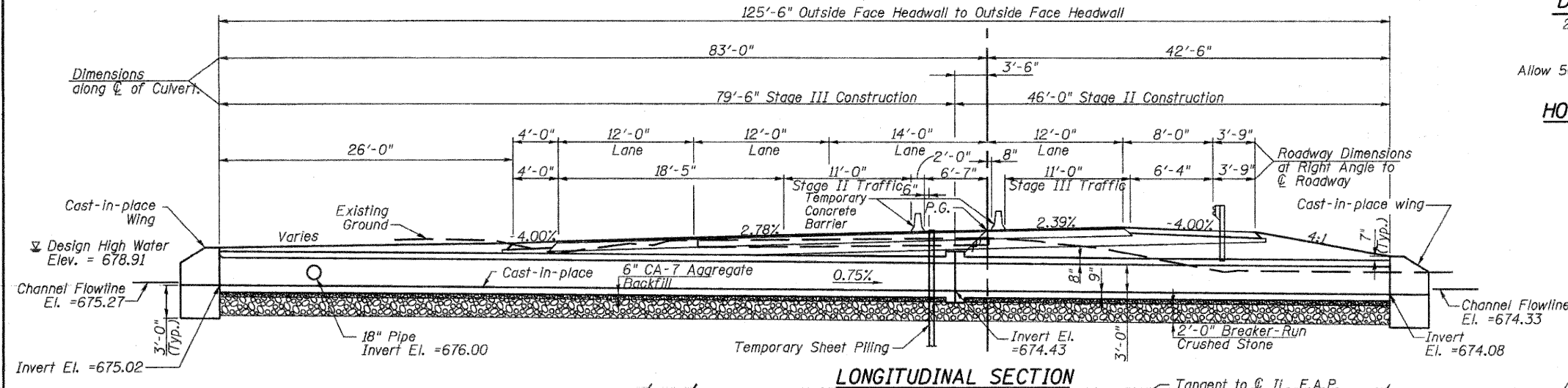
2002 A.A.S.H.T.O. Specifications  
LOADING HS 20-44  
Allow 50#/Sq. Ft. for future wearing surface

HORIZONTAL CURVE DATA

IL Rte. 2  
P.I. Sta. = 682+45.19  
Δ = 27°33'30.5" (LT)  
D = 3°49'11"  
R = 1,500.00'  
T = 367.86'  
L = 721.48'  
E = 44.45'  
S.E. = 0.054'/'  
P.C. Sta. = 678+77.33  
P.T. Sta. = 685+98.81

NOTES

See sheet 2 for General Notes.



STATION 678+70.00  
BUILT 20\_\_ BY  
STATE OF ILLINOIS  
F.A.P. RTE. 742 SEC. 37R-3  
LOADING HS20-44  
STRUCTURE NO. 071-1127

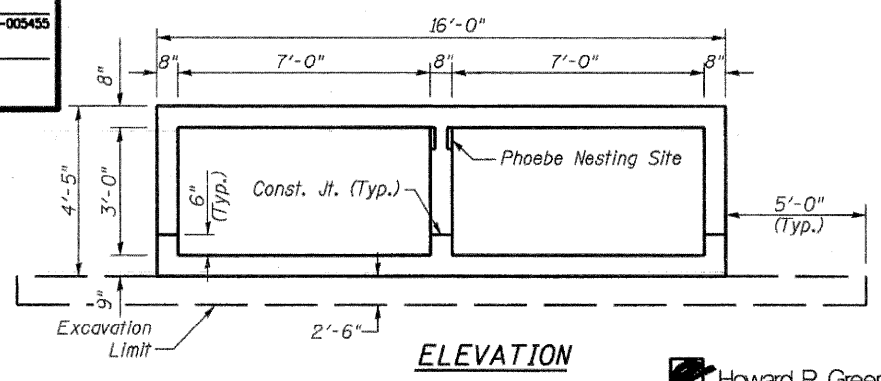
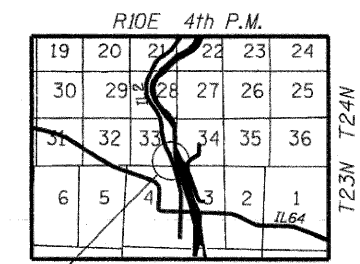
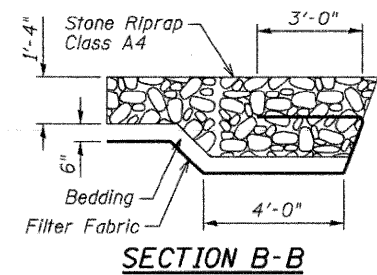
NAME PLATE  
See Std. 515001

WATERWAY INFORMATION TABLE

Drainage Area = 0.30 sq. mi.	Existing Low Grade Elevation: 680.22 ft. @ Sta. 678+43.00	
	Proposed Low Grade Elevation: 680.53 ft. @ Sta. 684+00.00	

DESIGN SCOUR ELEVATION TABLE

Design Scour Elevation (ft.)	Upstream	Downstream
	672.27	671.33



STATE OF ILLINOIS  
DAVID F. MAXWELL  
081-005455  
ST. LOUIS, MO.  
REGISTERED STRUCTURAL ENGINEER

David F. Maxwell, S.E.  
Reg. No. 081-005455  
Date: 2/19/09  
My registration expires November 30, 2010.

DESIGNED	DFM
CHECKED	CTH
DRAWN	CTH
CHECKED	DSG

APPROVED  
FOR STRUCTURAL ADEQUACY ONLY

Ralph E. Anderson  
ENGINEER OF BRIDGES AND STRUCTURES

Howard R. Green Company

SHEET NO. 1 7 SHEETS	F.A.P. RTE. 742	SECTION 37 R-3	COUNTY OGLE	TOTAL SHEETS 345	SHEET NO. 189
	SN 071-1127		CONTRACT NO. 84788		
FED. ROAD DIST. NO. 7 ILLINOIS FED. AID PROJECT					

GENERAL PLAN & ELEVATION  
IL. ROUTE 2 OVER  
TRIBUTARY TO ROCK RIVER  
STA. 678+70.00