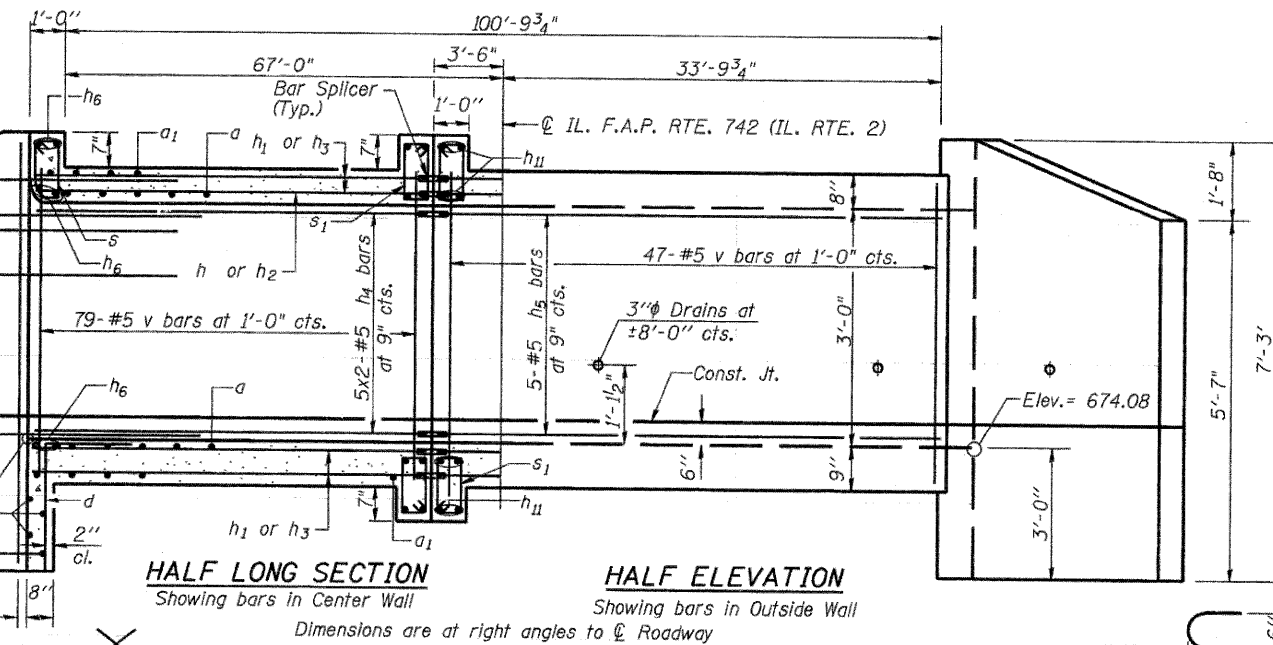


STATE OF ILLINOIS
DEPARTMENT OF TRANSPORTATION

(Back)
2-#4 h₇ bars at 1'-0" cts. Short Wing
2-#5 h₁₀ bars at 10" cts. Long Wing

(Front)
4-#4 h₇ bars at 1'-0" cts. Short Wing
4-#5 h₁₀ bars at 10" cts. Long Wing

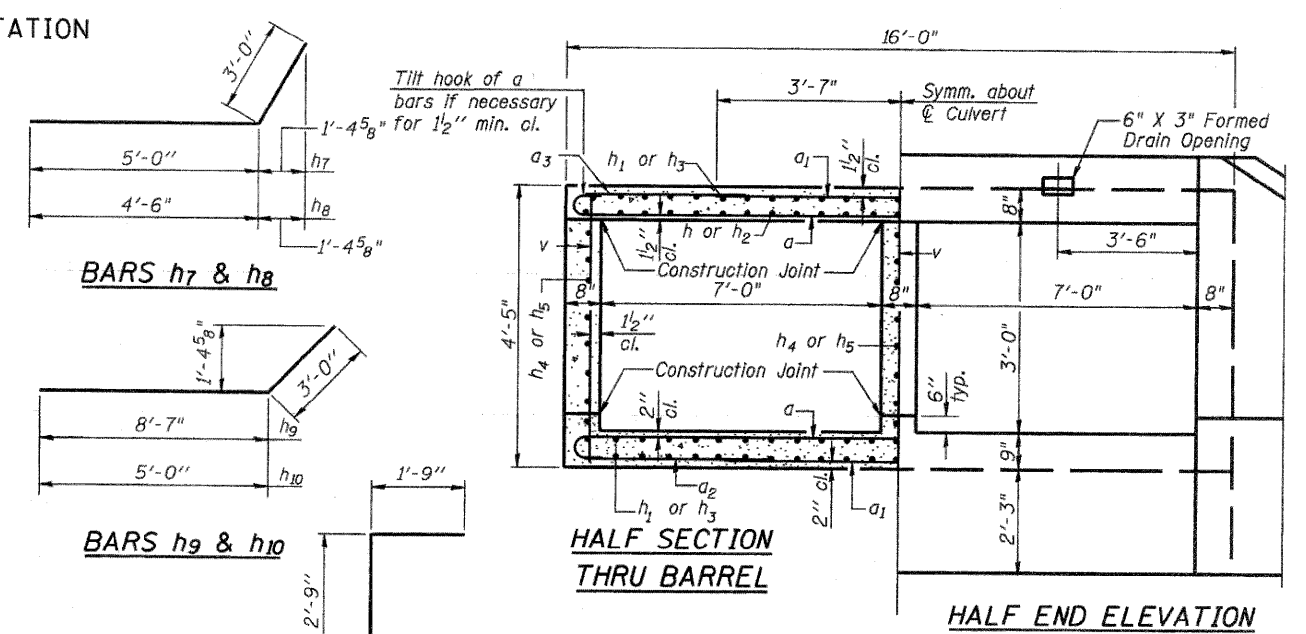
Bend in Field, typ.
7-#5 h₆ bars at 10" cts. Long Wing
5-#4 h₈ bars at 1'-0" cts. Short Wing



HALF LONG SECTION
Showing bars in Center Wall

HALF ELEVATION
Showing bars in Outside Wall

Dimensions are at right angles to \odot Roadway



BARS h₇ & h₈

BARS h₉ & h₁₀

HALF SECTION THRU BARREL

HALF END ELEVATION

NOTES

Bars indicated thus 12x4-#5 etc. indicates 12 lines of bars with 4 lengths per line.
Field cut bars intersecting 18" RCP.

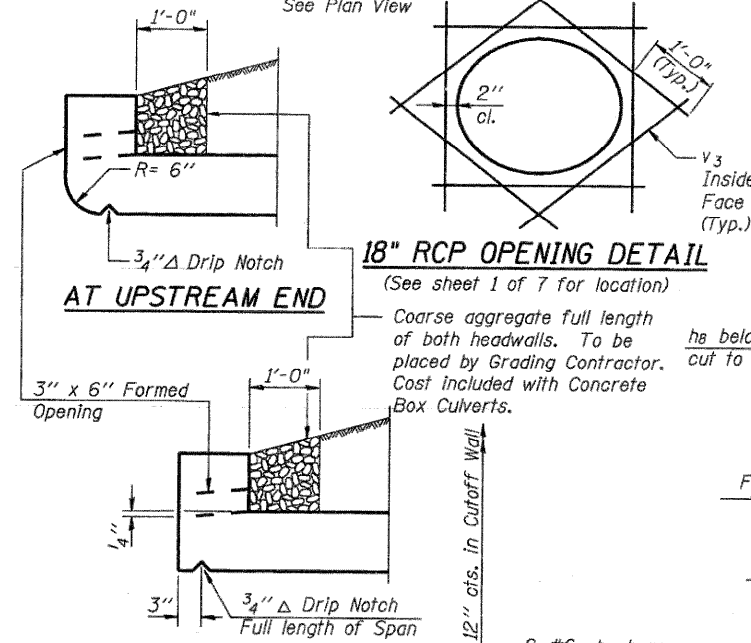
BILL OF MATERIAL

Bar	No.	Size	Length	Shape
a	500	#6	17'-0"	C
a ₁	500	#6	7'-2"	—
a ₂	124	#4	5'-8"	—
a ₃	166	#5	6'-0"	—
d	30	#4	4'-6"	L
h	32	#6	40'-8"	—
h ₁	108	#4	40'-2"	—
h ₂	16	#6	46'-4"	—
h ₃	54	#4	46'-4"	—
h ₄	30	#5	40'-5"	—
h ₅	15	#5	46'-4"	—
h ₆	18	#6	17'-7"	—
h ₇	12	#4	8'-0"	—
h ₈	10	#4	7'-6"	—
h ₉	14	#5	11'-7"	—
h ₁₀	12	#5	8'-0"	—
h ₁₁	16	#6	19'-2"	—
s	18	#4	4'-1"	—
s ₁	94	#4	4'-3"	—
v	382	#5	4'-2"	—
v ₁	8	#4	7'-0"	—
v ₂	8	#5	7'-0"	—
v ₃	8	#5	3'-1"	—
Reinforcement Bars			Pound	32,790
Bar Splicers			Each	85
Concrete Box Culverts			Cu. Yd.	143

18" RCP OPENING DETAIL

(See sheet 1 of 7 for location)

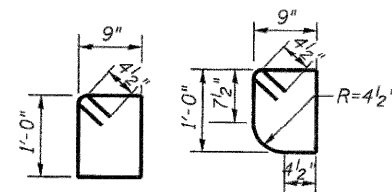
Coarse aggregate full length of both headwalls. To be placed by Grading Contractor. Cost included with Concrete Box Culverts.



AT UPSTREAM END

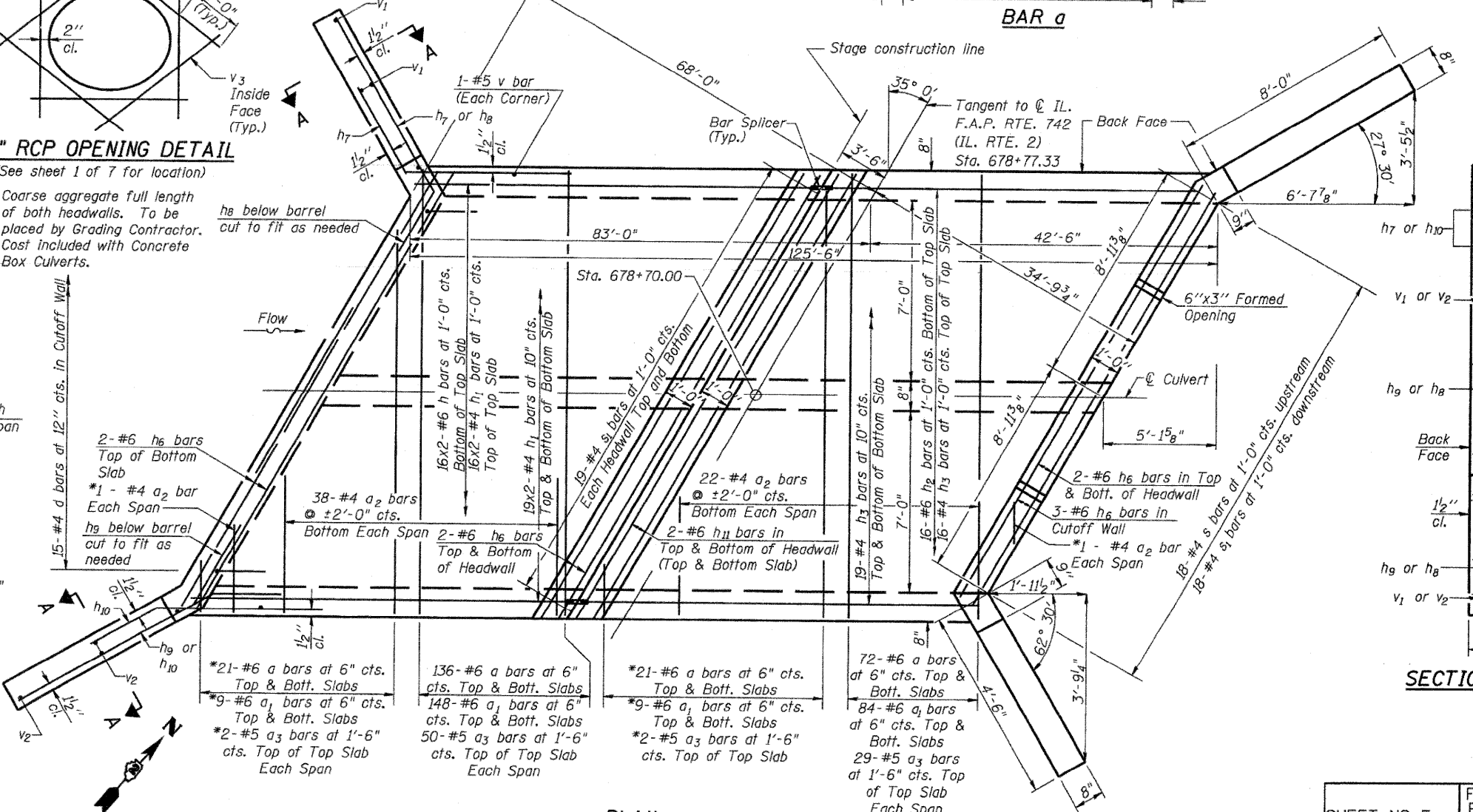
AT DOWNSTREAM END

DRAIN DETAIL



BAR s₁ (E) **BAR s (E)**

DESIGNED	DFM
CHECKED	CTH
DRAWN	CTH
CHECKED	DSG



PLAN

*Cut a bars to fit skew. Use balance of bar in opposite end.

SECTION A-A

CULVERT DETAILS
IL. ROUTE 2 OVER
TRIBUTARY TO ROCK RIVER
STA. 678+70.00

SHEET NO. 5	F.A.P. RTE.	SECTION	COUNTY	TOTAL SHEETS	SHEET NO.
	742	37 R-3	OGLE	345	193
7 SHEETS	SN 071-1127		CONTRACT NO. 84788		
FED. ROAD DIST. NO. 7 ILLINOIS FED. AID PROJECT					