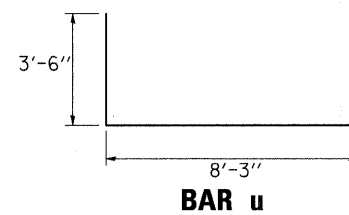
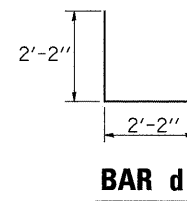
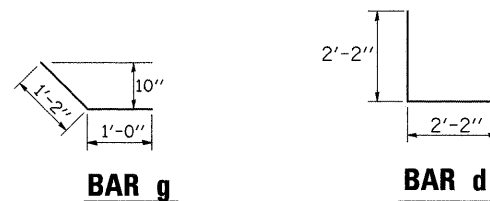
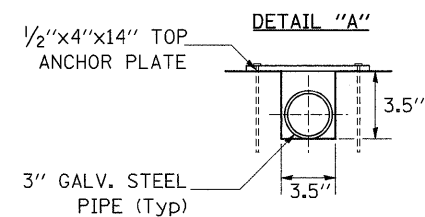
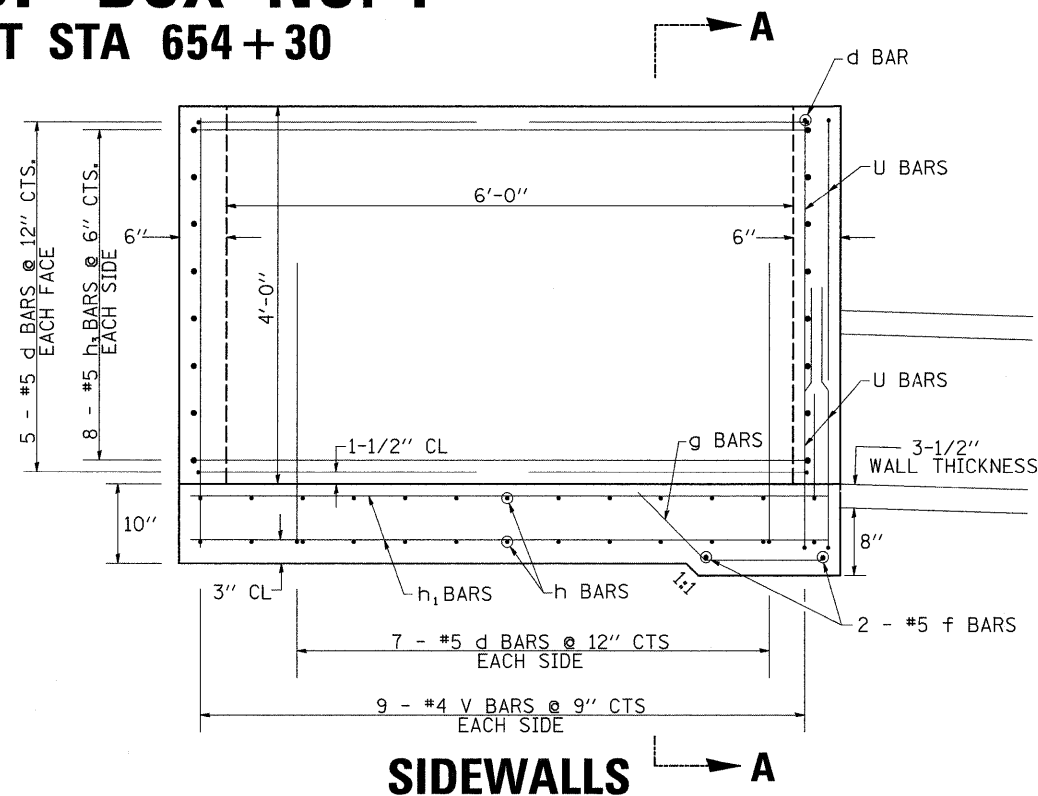
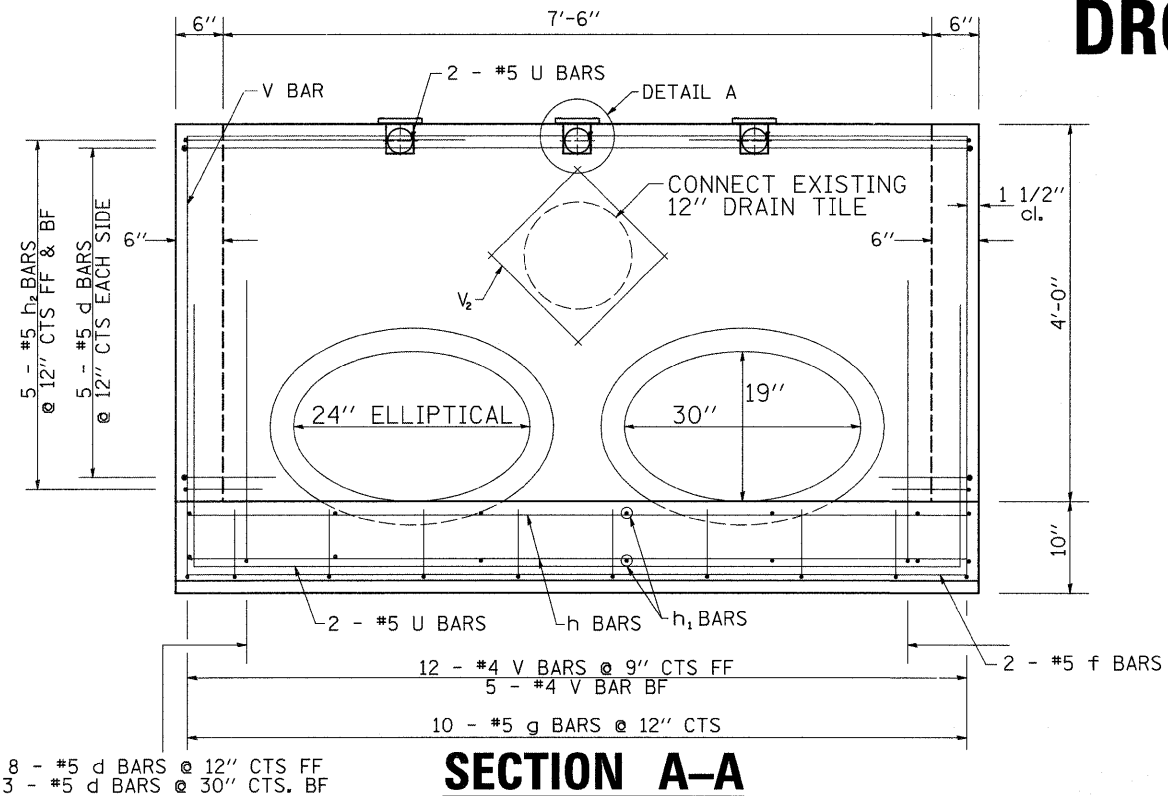


DROP BOX NO. 4

LT STA 654 + 30



BILL OF MATERIAL

(For Information Only)

BAR	SIZE	NO.	LENGTH	SHAPE
d	5	45	4'-4"	└
f	5	2	8'-3"	—
g	5	10	2'-2"	└
h	7	26	8'-3"	—
h1	5	14	6'-9"	—
h2	5	10	8'-3"	—
h3	5	16	6'-9"	—
v	4	35	4'-6"	—
v2	4	8	1'-3"	—
u	5	4	15'-3"	└
DESCRIPTION	UNIT	QTY.		
CONCRETE STRUCTURES	CU YD	3.88		
REINFORCEMENT BARS	LB	1154		
DESCRIPTION	UNIT	QTY.		
3" GALVANIZED STEEL PIPE	7'-0"	3		
3" GALVANIZED PIPE CAPS	EACH	6		
1/4" GALVANIZED STEEL PLATE (9" NOMINAL)	EACH	6		
1/2"x 4"x 14" GALVANIZED STEEL PLATE	EACH	6		
5/8"x 9" GALVANIZED STEEL BOLTS	EACH	12		

GENERAL NOTES:

This work shall be paid for at the contract unit price per Each for Drop Box No. 4.

Contractor shall field verify Galvanized pipe length.

Exposed edges shall be beveled 3/4 ".

The contract unit price "each" for DROP BOX NO. 4 shall include the Expansion Bolts, Galvanized Pipe, Pipe Caps, Concrete Structures, Reinforcement Bars, Bolts, Nuts, Washers, Steel Plates, earth excavation where required, and necessary grading to fit the inlet as shown in the cross sections or to the slope.

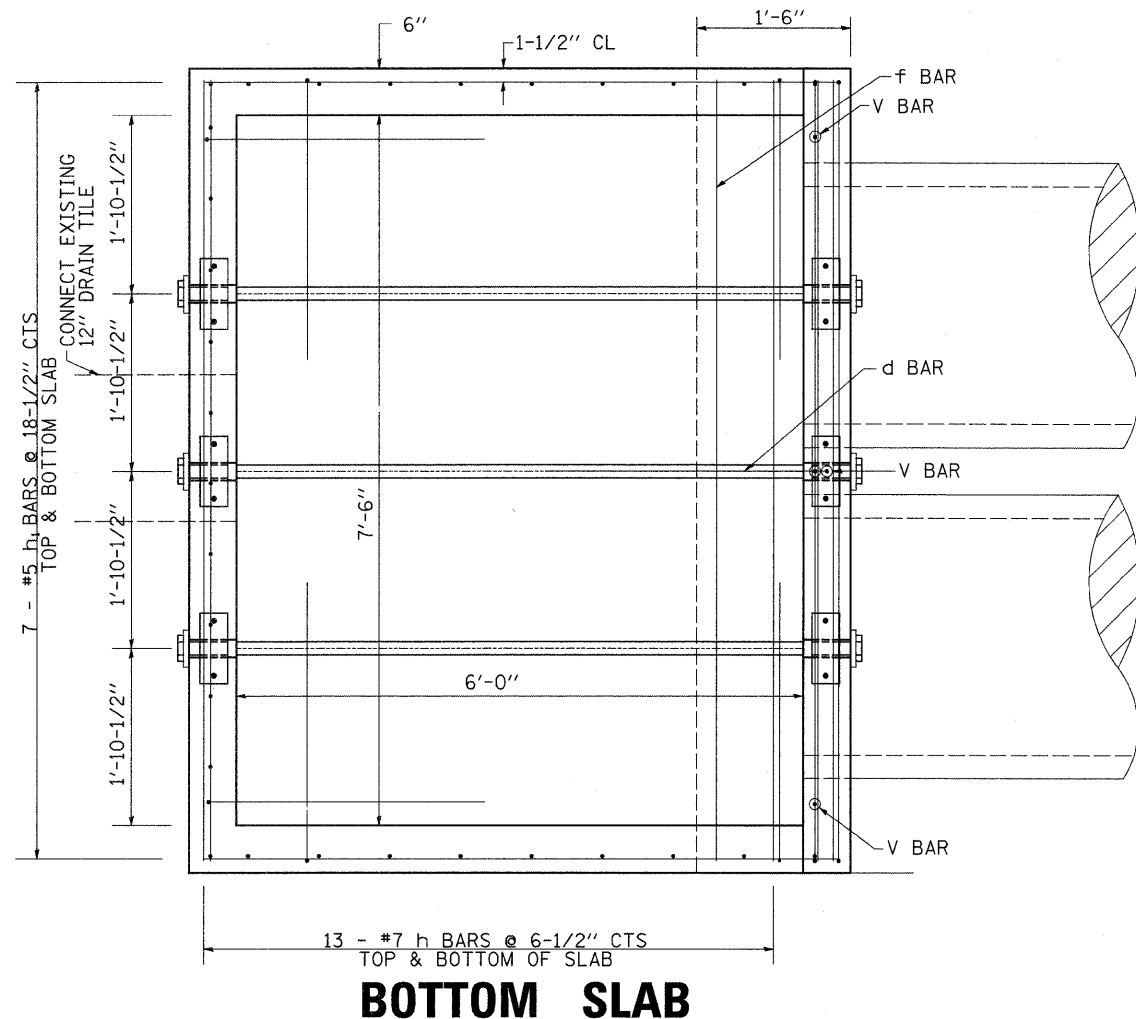
Reinforcement bars shall conform to the requirements of ASTM A 706 Gr. 60 (IL Modified). See Special Provisions.

Steel Plates shall conform to AASHTO M-183 and shall be Galvanized conforming to AASHTO M-111.

Bolts, Nuts, and Washers shall be in accordance with Article 505 of the Standard Specification and shall be galvanized.

See Plan & Profile Sheet for more information.

See Cross Section Sheet for more information.



FILE NAME =	USER NAME = cushmanbw	DESIGNED -	REVISED -	STATE OF ILLINOIS DEPARTMENT OF TRANSPORTATION	DROP BOX NO. 4	F.A.P. RTE.	SECTION	COUNTY	TOTAL SHEETS	SHEET NO.		
c:\pwwork\pwwid01\CUSHMANBW\dms34123\dwg\6486cu1v.dgn	PLOT SCALE = 5/8" = 1' / IN.	DRAWN -	REVISED -			742	37R-3	OGLE	345	202		
PLOT DATE = Fri May 01 08:27:31 2009	DATE -	CHECKED -	REVISED -			CONTRACT NO. 84788						
		DATE -	REVISED -			SCALE:	SHEET NO.	OF	SHEETS	STA.	TO STA.	FED. ROAD DIST. NO.