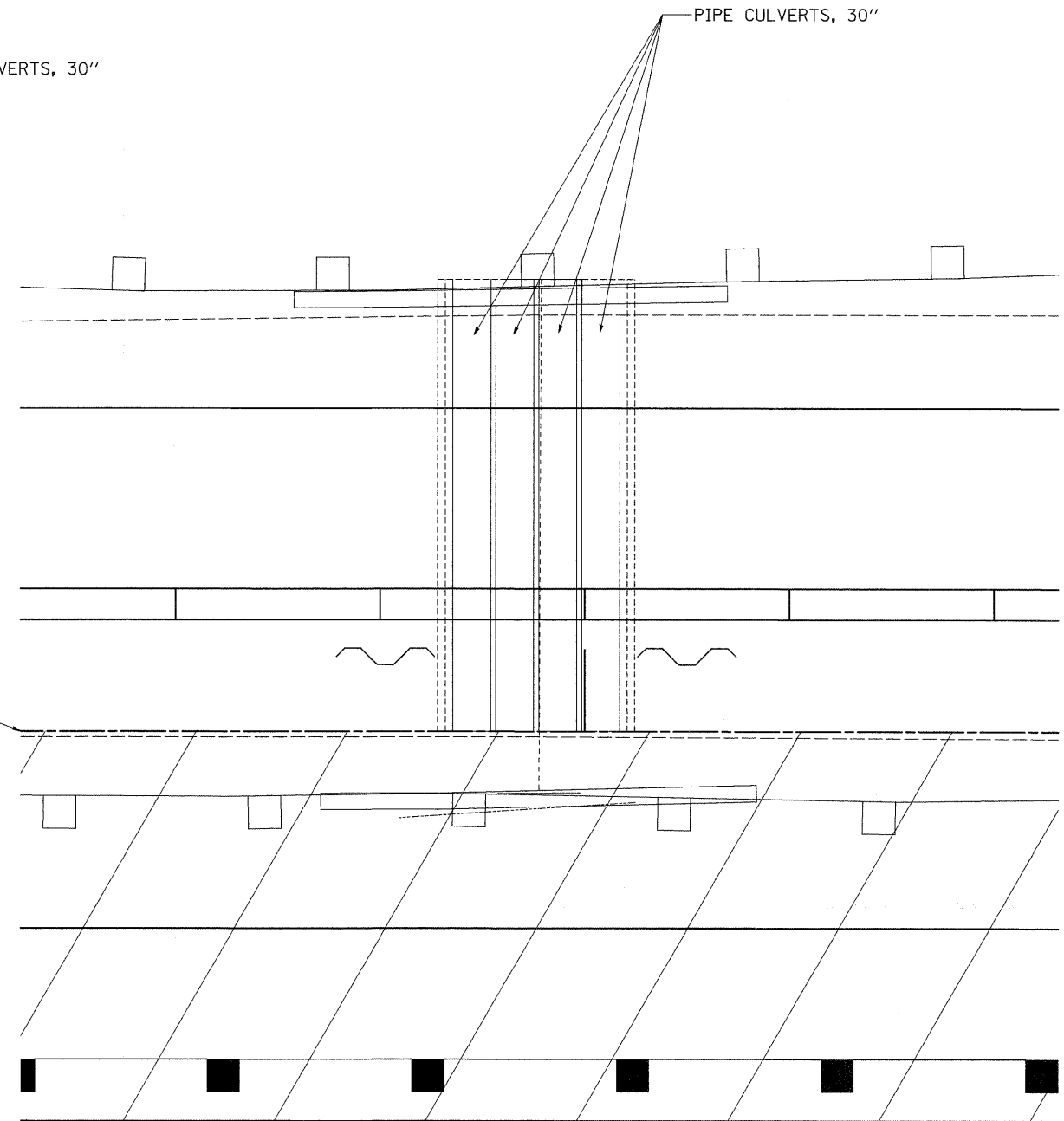
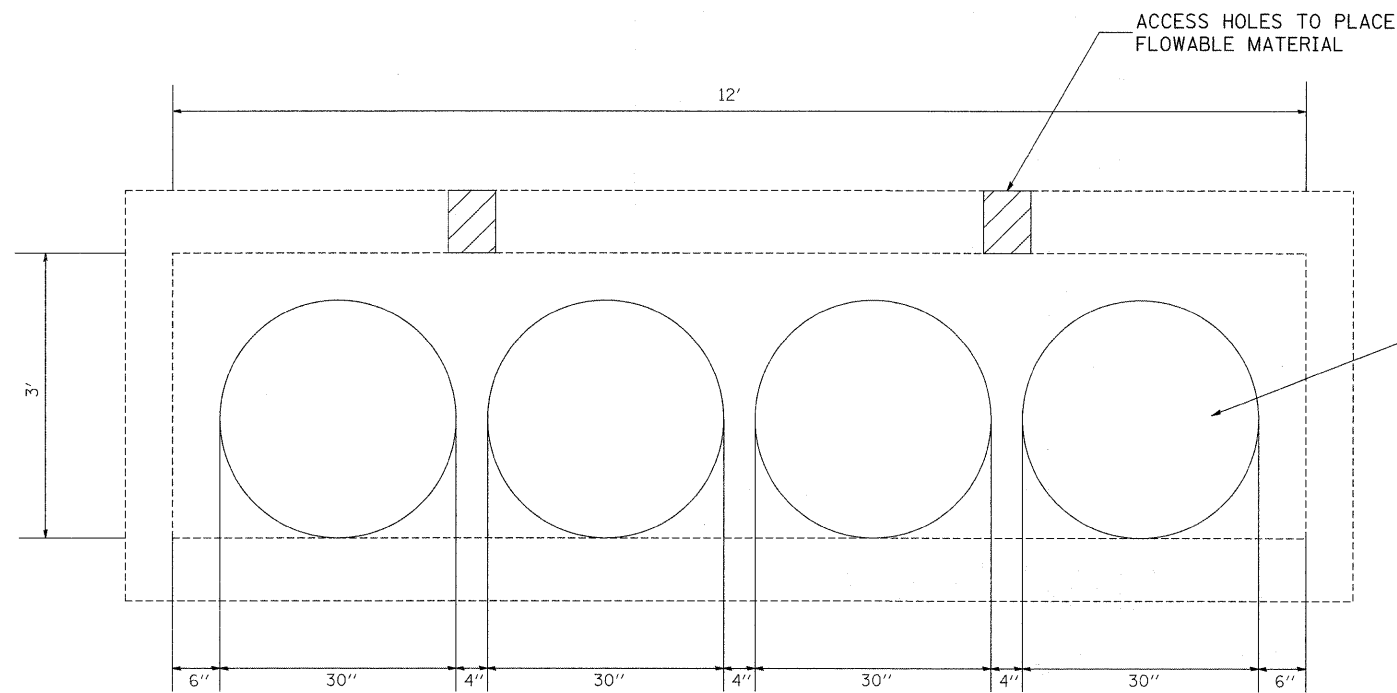


TEMPORARY SUPPORT SYSTEM OPTION @ CULVERT STA. 677 + 98



NOTES

This is an option for the Contractor to consider when designing the Temporary Support System.

The Contractor shall verify the design per the Temporary Support System Special Provision.

FILE NAME =	USER NAME = cushmanbw	DESIGNED -	REVISED -
cr\pw_work\PWIDOT\CUSHMANBW\dms34123\dms34123.dwg	6486sp169.dgn	DRAWN -	REVISED -
	PLOT SCALE = 50.0000' / IN.	CHECKED -	REVISED -
	PLOT DATE = Fri May 01 08:45:23 2009	DATE -	REVISED -

**STATE OF ILLINOIS
DEPARTMENT OF TRANSPORTATION**

TEMPORARY SUPPORT SYSTEM OPTION

SCALE: SHEET NO. OF SHEETS STA. TO STA.

F.A.P. RTE.	SECTION	COUNTY	TOTAL SHEETS	SHEET NO.
742	37R-3	OGLE	345	224
CONTRACT NO. 84788				
FED. ROAD DIST. NO.		ILLINOIS FED. AID PROJECT		