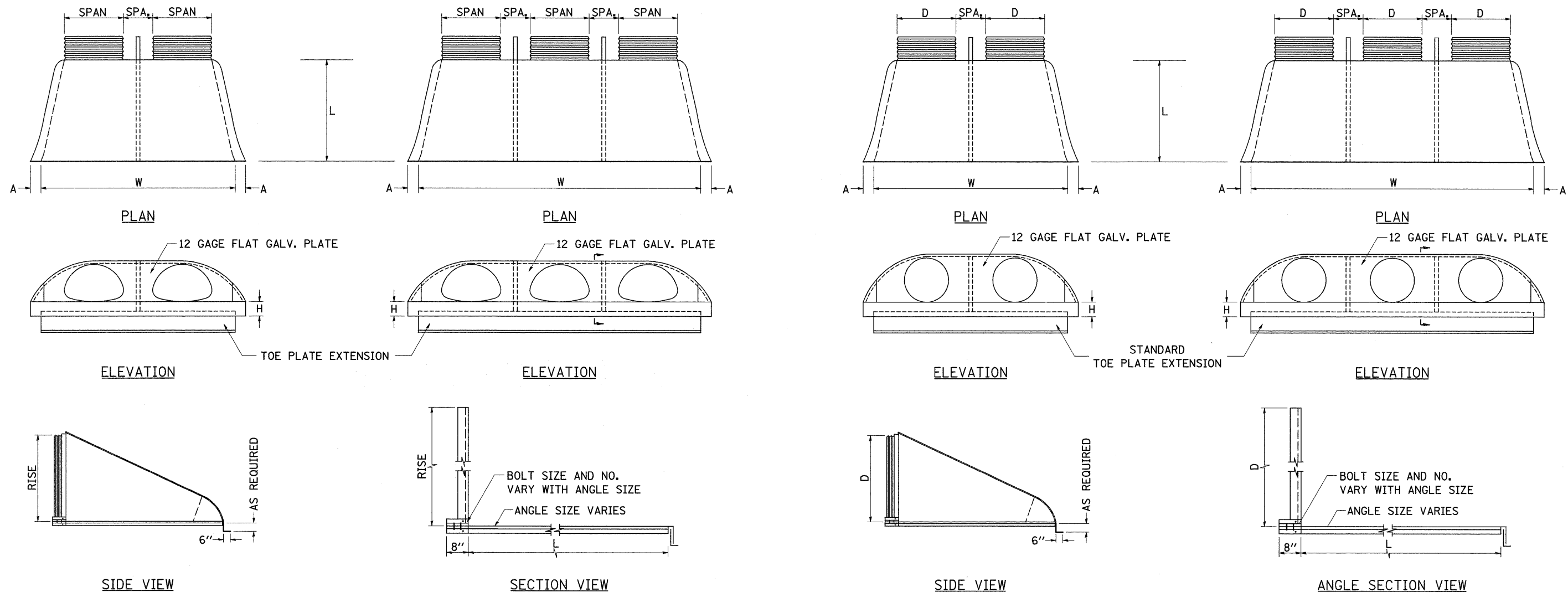


CORRUGATED STEEL PIPE MULTIPLE END SECTIONS



GENERAL NOTES

THE END SECTIONS WILL BE PAID FOR AT THE CONTRACT UNIT PRICE PER EACH FOR CORRUGATED STEEL PIPE MULTIPLE END SECTIONS OF THE SIZE SPECIFIED.

PIPE-ARCH MULTIPLE INLET END SECTIONS									
SPAN x RISE 2-2/3" x 1/2"	EQUIV. ROUND	GAGE	SPA. (In)	A (In)	H (In)	L (In)	DOUBLE W	TRIPLE W	REINFORCING ANGLE
17 x 13	15	16	12	6 1/2	6	20	59	88	2 x 2 x 1/4
21 x 15	18	16	12	7 1/2	6	24	69	102	2 x 2 x 1/4
24 x 18	21	16	12	8	6	28	78	114	2 x 2 x 1/4
28 x 20	24	16	12	8	6	32	88	128	5 x 3 x 1/4
35 x 24	30	14	12	10	6	39	107	154	5 x 3 x 1/4
42 x 29	36	14	14	12	7 1/2	46	131	187	5 x 3 x 1/4
49 x 33	42	12	17	13 1/2	9	53	150	216	5 x 3 x 1/4
57 x 38	48	12	19	18 1/2	12	62	166	242	6 x 4 x 3/8
64 x 43	54	12	22	18	12	69	188	274	6 x 4 x 3/8
71 x 47	60	12/10	24	18 1/2	12	77	209	304	6 x 4 x 3/8
77 x 62	66	12/10	26	18	12	77	229	332	6 x 4 x 3/8
83 x 67	72	12/10	28	18	12	77	243	354	6 x 4 x 3/8
SPAN x RISE 3"x1" & 5"x1"	EQUIV. ROUND	GAGE	SPA. (In)	A (In)	H (In)	L (In)	DOUBLE W	TRIPLE W	REINFORCING ANGLE
60 x 46	54	12	20	18	12	70	182	262	6 x 4 x 3/8
66 x 51	60	12/10	22	18	12	77	202	290	6 x 4 x 3/8
73 x 55	66	12/10	25	18	12	77	224	322	6 x 4 x 3/8
81 x 69	72	12/10	27	18	12	77	246	354	6 x 4 x 3/8

ROUND PIPE MULTIPLE INLET END SECTIONS									
PIPE DIA. (D) (In)	GAGE	SPA. (In)	A (In)	H (In)	L (In)	DOUBLE W	TRIPLE W	REINFORCING ANGLE	
12	16	12	6 1/2	6	21	48	72	2 x 2 x 1/4	
15	16	12	7 1/2	6	26	57	84	2 x 2 x 1/4	
18	16	12	8	6	31	66	96	2 x 2 x 1/4	
21	16	12	10	6	36	75	108	2 x 2 x 1/4	
24	16	12	10	6	41	84	120	5 x 3 x 1/4	
30	14	15	12 1/4	8	51	102	147	5 x 3 x 1/4	
36	14	18	14 1/2	9	60	126	180	5 x 3 x 1/4	
42	12	21	17	10 1/2	69	147	210	5 x 3 x 1/4	
48	12	24	18 1/2	12	79	162	234	6 x 4 x 7/16	
54	12	27	18 1/2	12	84	183	264	6 x 4 x 7/16	
60	12/10	30	18	12	88	204	294	6 x 4 x 7/16	
66	12/10	33	18	12	87	219	318	6 x 4 x 7/16	
72	12/10	36	18	12	88 1/2	228	336	6 x 4 x 7/16	
78	12/10	36	18	12	87 1/2	252	366	6 x 4 x 7/16	
84	12/10	36	18	12	87 1/2	254	384	6 x 4 x 7/16	

NOTE: ALL DIMENSIONS ARE IN INCHES UNLESS OTHERWISE NOTED

FILE NAME =	USER NAME = cushmanbw	DESIGNED -	REVISED - 1-11-08	STATE OF ILLINOIS DEPARTMENT OF TRANSPORTATION	REGION 2 / DISTRICT 2 STANDARD	F.A.P. RTE.	SECTION	COUNTY	TOTAL SHEETS	SHEET NO.	
et\pw_work\FWIDOT\CUSHMANBW\dms34123\d6486sp169.dgn		DRAWN -	REVISED -			742	37R-3	OGLE	345	235	
		CHECKED -	REVISED -			CONTRACT NO. 84788					
		DATE -	REVISED -			FED. ROAD DIST. NO. ILLINOIS FED. AID PROJECT					