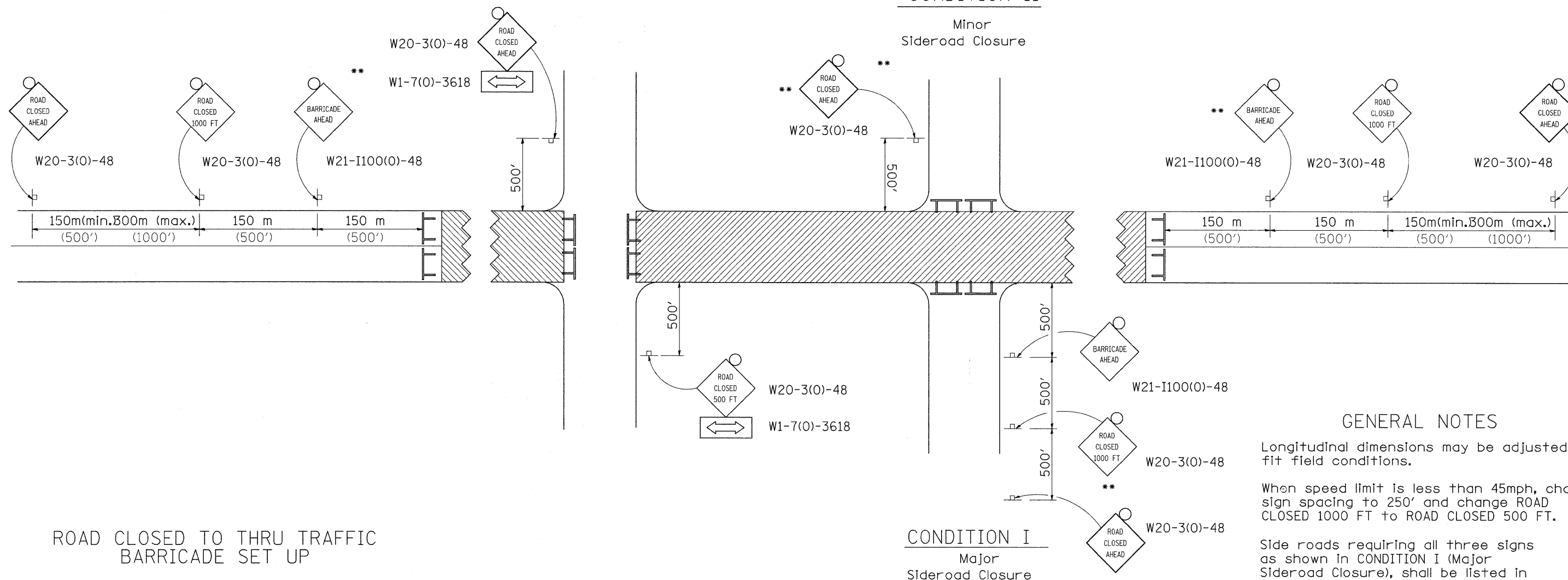


# TRAFFIC CONTROL FOR ROAD CLOSURE

## CONDITION II

Minor Sideroad Closure



### GENERAL NOTES

Longitudinal dimensions may be adjusted to fit field conditions.

When speed limit is less than 45mph, change sign spacing to 250' and change ROAD CLOSED 1000 FT to ROAD CLOSED 500 FT.

Side roads requiring all three signs as shown in CONDITION I (Major Sideroad Closure), shall be listed in the special provision.

\*\* Where local access is to be maintained, barricades are to be set up as shown in Road Closed to thru traffic. Type III Barricades and R11-2-4830 signs shall be as shown in "Road Closed To All Traffic" detail on Highway Standard 701901.

All dimensions are in millimeters (inches) unless otherwise shown.

### SYMBOLS

- Work area
- Type III Barricade with Flashers
- Sign with flashing light

TYPICAL APPLICATION FOR ROAD CLOSURE

FILE NAME =	USER NAME = cushmanbw	DESIGNED -	REVISED - 1-11-08	<b>STATE OF ILLINOIS DEPARTMENT OF TRANSPORTATION</b>	<b>REGION 2 / DISTRICT 2 STANDARD</b>	F.A.P. RTE.	SECTION	COUNTY	TOTAL SHEETS	SHEET NO.	
ct:\pw_work\FWIDOT\CUSHMANBW\dms34123\dms34123.dwg	6486sp169.dgn	DRAWN -	REVISED -			742	37R-3	OGLE	345	236	
PLOT SCALE = 50.0000' / IN.		CHECKED -	REVISED -			CONTRACT NO. 84788					
PLOT DATE = Fri May 01 08:45:21 2009		DATE -	REVISED -			FED. ROAD DIST. NO. ILLINOIS FED. AID PROJECT					