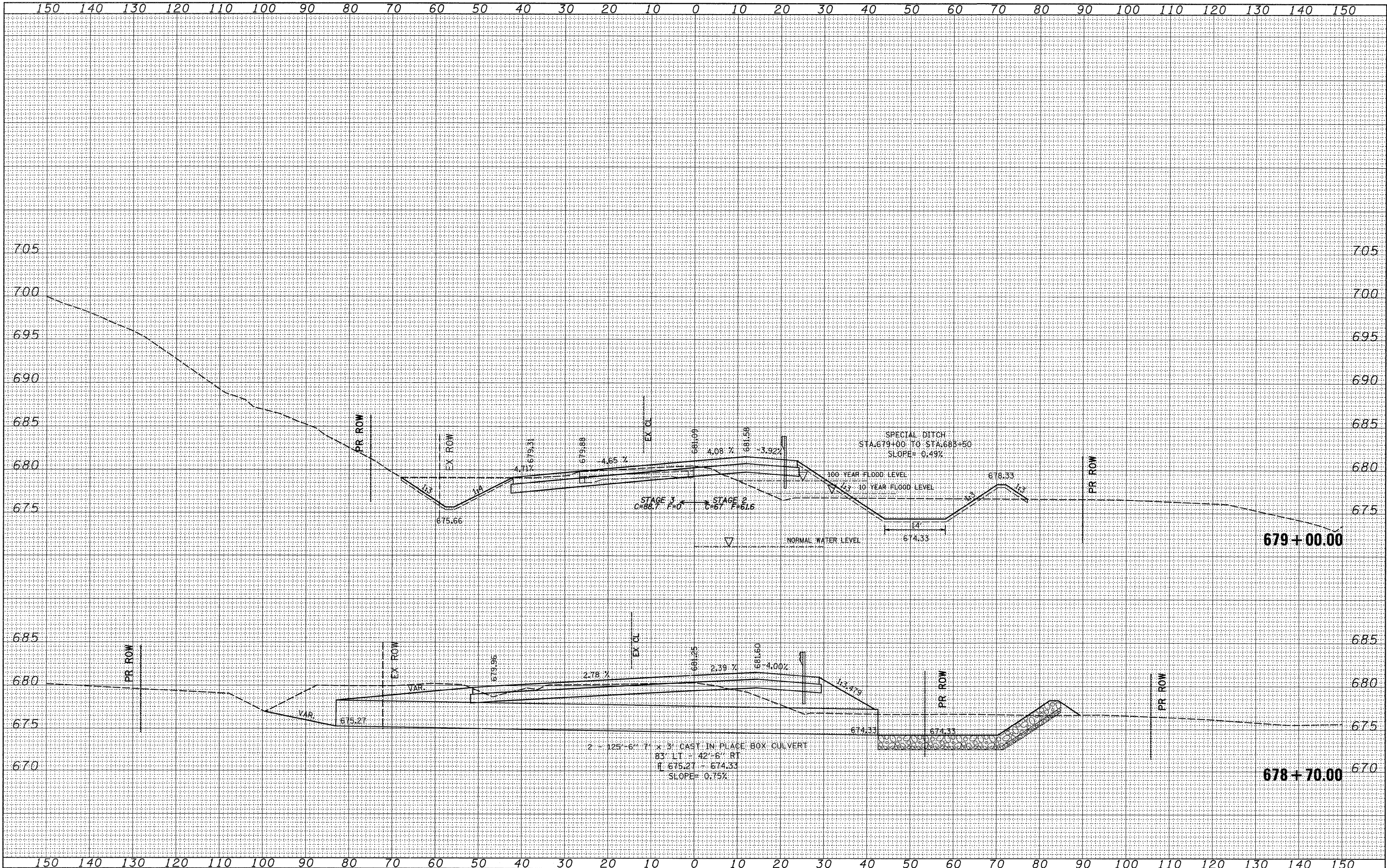


DATE	
BY	
SURVEYED	
PLOTTED	
NOTE BOOK	
AREAS CHECKED	

DATE	
BY	
SURVEYED	
PLOTTED	
NOTE BOOK	
AREAS CHECKED	



FILE NAME =
 USER NAME = cushmanbw
 DESIGNED -
 DRAWN -
 CHECKED -
 DATE - Thu Apr 30 11:05:09 2009

DESIGNED -
 DRAWN -
 CHECKED -
 DATE -

REVISED -
 REVISED -
 REVISED -
 REVISED -

STATE OF ILLINOIS
 DEPARTMENT OF TRANSPORTATION

SCALE: SHEET NO. OF SHEETS STA. 678+70.00 TO STA. 679+00.00

IL RTE 2

F.A.P. RTE. 742 SECTION 37R-3 COUNTY OGLE TOTAL SHEETS 345 SHEET NO. 318 CONTRACT NO. 84788

FED. ROAD DIST. NO. ILLINOIS FED. AID PROJECT