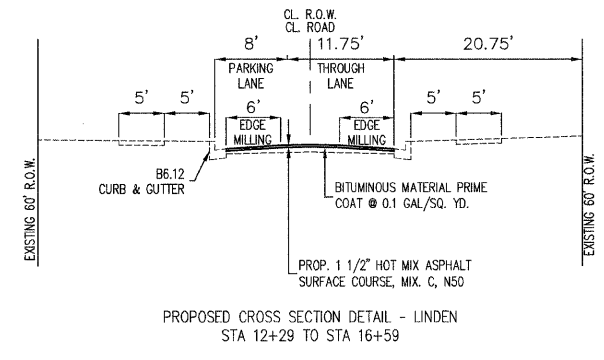
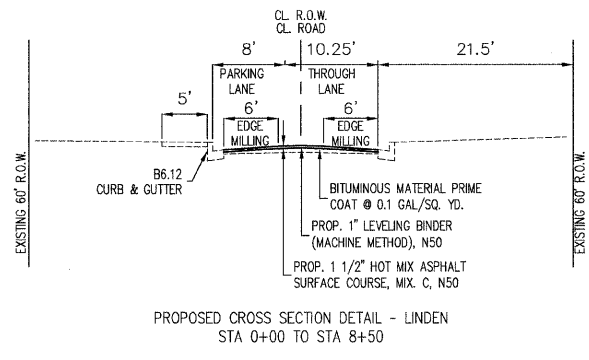
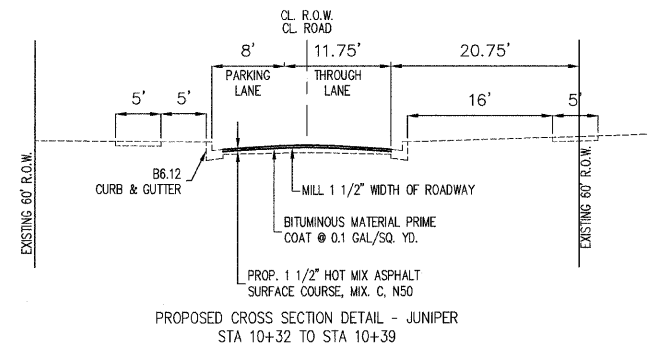
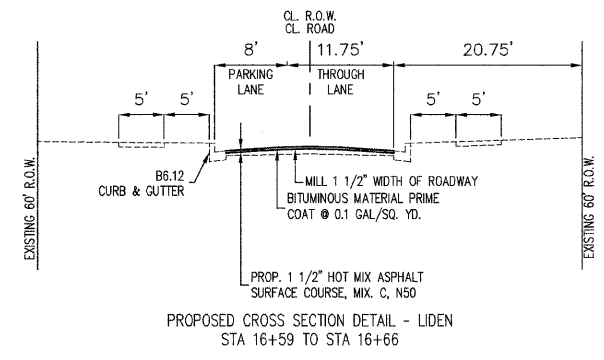
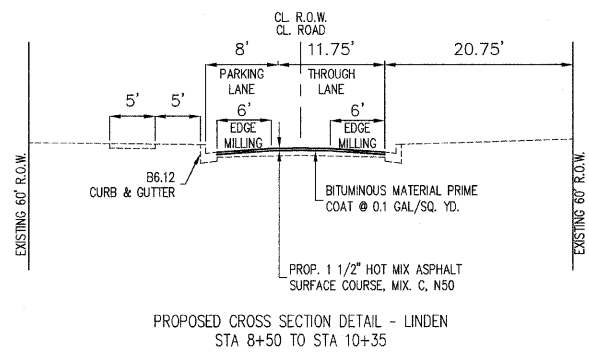
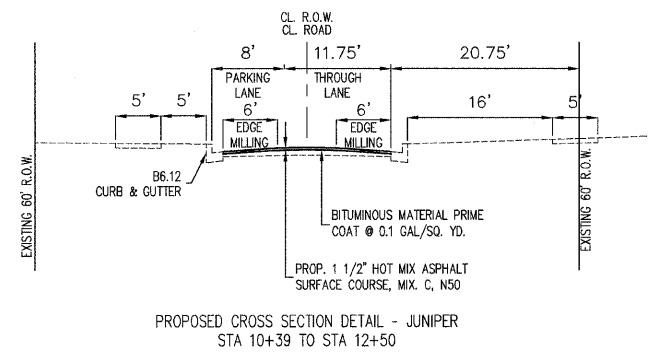
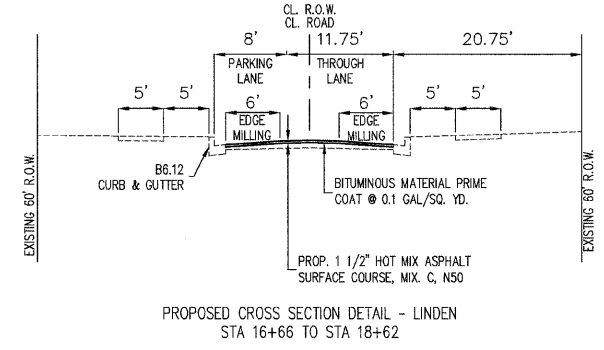
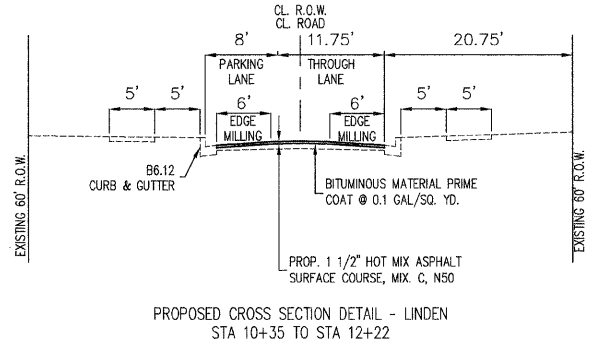
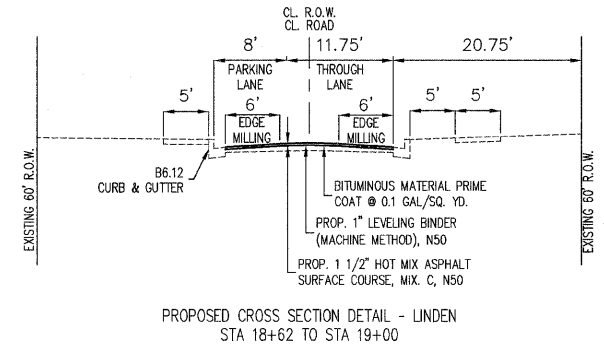
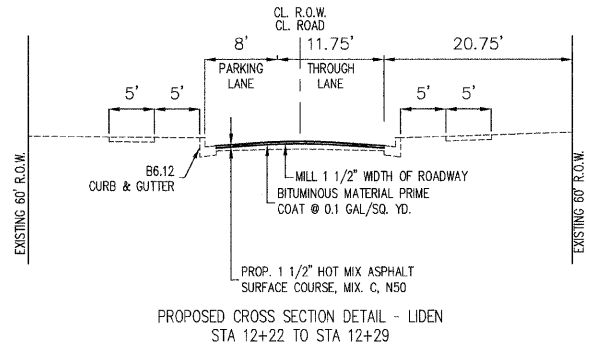


F.A.U. RTE.	SECTION	COUNTY	TOTAL SHEETS	SHEET NO.
VARIOUS	05-07144-00-RS	KANKAKEE	24	14

PROJECT NO.: HPP-4079(002)  
CONTRACT NO.: 87358



**M<sup>2</sup>**  
**M. GINGERICH, GERAUX**  
**ASSOCIATES**

240 N. Industrial Drive  
Bradley, Illinois 60915  
815-939-4921  
FAX: 815-939-9810

REVISIONS		
DATE	BY	DESCRIPTION
2/17/2009	JWG	REVISIONS PER REVIEW
3/25/2009	JWG	REVISIONS PER REVIEW
5/11/2009	JWG	REVISIONS PER REVIEW

ILLINOIS DEPARTMENT OF TRANSPORTATION  
MANTENO TOWNSHIP  
STREET OVERLAY PLAN

PROPOSED CROSS SECTIONS  
JUNIPER STA. 10+32 TO STA. 12+50  
LINDEN STA. 0+00 TO STA. 19+00

VERTICAL: 1" = 5'  
SCALE: HORIZONTAL: 1" = 10'  
DATE: 12/21/07

DRAWN BY: JWG  
CHECKED BY:

X:\PROJECTS\2009-06\HPP-4079\STREET OVERLAY PLANS\SET 14\CROSS SECTIONS 05.MXD LAYOUT: 01/22/2009 2:39:24 PM JWG