

T.B.M. "19" - N. CAP BOLT FIRE HYD.  
 STA. 1+1404.5 m ± RT. HICKORY GROVE  
 ELEV. = 240.155

SEC. 20 T.10N., R.8E., 4th P.M.

RTE NO.	SECTION	COUNTY	TOTAL	SHEET #
FA 646	125W-1, RS-2	PEORIA	256	101
STATION 1+030 TO STATION 1+200				

CENTERLINE CURVE DATA  
 FRONTAGE ROAD NO. 3

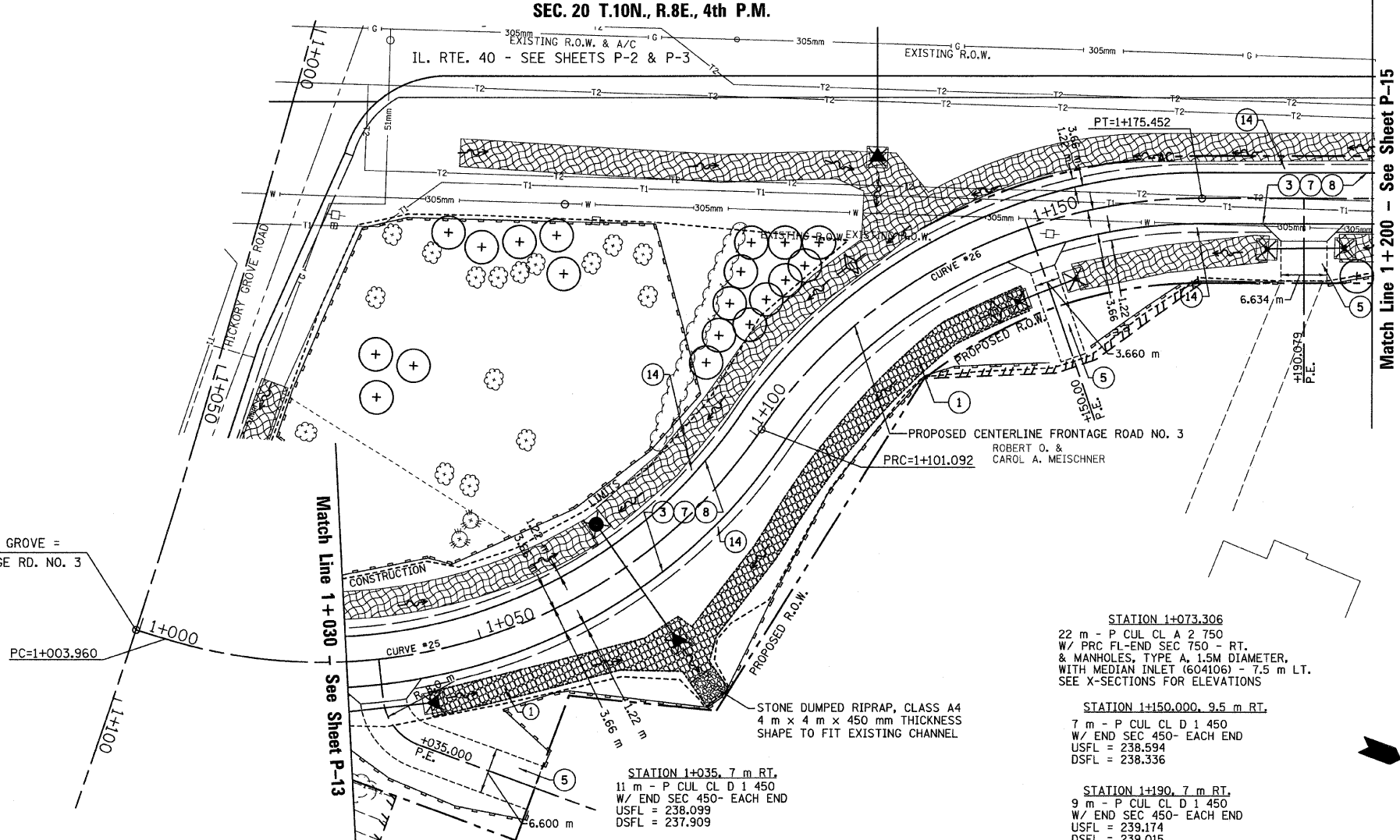
CURVE #25  
 PI STA 1+060.244  
 PC STA 1+003.962  
 PRC STA 1+101.092  
 $\Delta = 72^{\circ}29'47''$  (LT.)  
 R = 76.764 m  
 T = 56.282 m  
 L = 97.130 m  
 SE = N.C.

CURVE #26  
 PI STA 1+141.481  
 PRC STA 1+101.092  
 PT STA 1+175.452  
 $\Delta = 55^{\circ}30'07''$  (RT.)  
 R = 76.764 m  
 T = 40.389 m  
 L = 74.360 m  
 SE = N.C.

STA. 1+089.645 HICKORY GROVE =  
 STA. 0+999.526 FRONTAGE RD. NO. 3

LEGEND - EROSION CONTROL

- INLET & PIPE PROTECTION
- TEMPORARY DITCH CHECKS
- PERIMETER EROSION CONTROL BARRIER
- EROSION CONTROL BLANKET



LEGEND

- ① FABRIC FORMED CONCRETE RETENTION MAT
- ② AGGREGATE BASE COURSE
- ③ HOT-MIX ASPHALT BASE COURSE
- ④ HOT-MIX ASPHALT BASE COURSE WIDENING
- ⑤ AGGREGATE SURFACE COURSE
- ⑥ LEVELING BINDER (MACHINE METHOD)
- ⑦ HOT-MIX ASPHALT BINDER COURSE
- ⑧ POLYMERIZED HOT-MIX ASPHALT SURFACE COURSE
- ⑨ HOT-MIX ASPHALT REMOVAL-BUTT JOINT
- ⑩ HOT-MIX ASPHALT PAVEMENT (FULL-DEPTH)
- ⑪ PORTLAND CEMENT CONCRETE PAVEMENT
- ⑫ PORTLAND CEMENT CONCRETE SIDEWALK
- ⑬ HOT-MIX ASPHALT REMOVAL (VAR. DEPTH)
- ⑭ AGGREGATE SHOULDERS
- ⑮ HOT-MIX ASPHALT SHOULDERS
- ⑯ COMBINATION CONCRETE CURB AND GUTTER

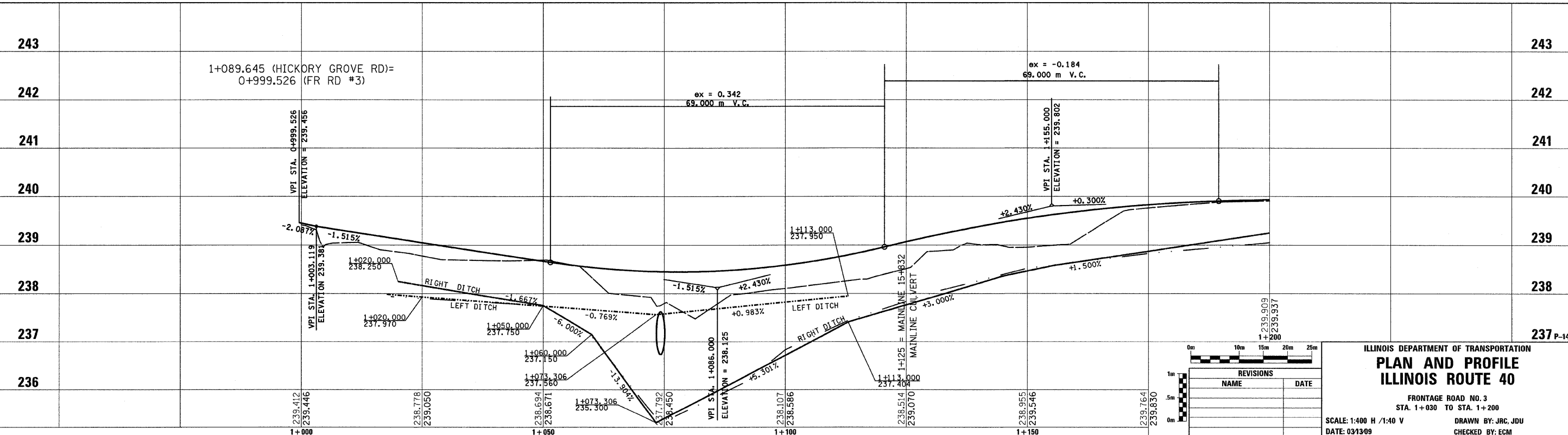
STATION 1+073.306  
 22 m - P CUL CL A 2 750  
 W/ PRC FL-END SEC 750 - RT.  
 & MANHOLES, TYPE A, 1.5M DIAMETER,  
 WITH MEDIAN INLET (604106) - 7.5 m LT.  
 SEE X-SECTIONS FOR ELEVATIONS

STATION 1+150.000, 9.5 m RT.  
 7 m - P CUL CL D 1 450  
 W/ END SEC 450- EACH END  
 USFL = 238.594  
 DSFL = 238.336

STATION 1+190, 7 m RT.  
 9 m - P CUL CL D 1 450  
 W/ END SEC 450- EACH END  
 USFL = 239.174  
 DSFL = 239.015

STATION 1+035, 7 m RT.  
 11 m - P CUL CL D 1 450  
 W/ END SEC 450- EACH END  
 USFL = 238.099  
 DSFL = 237.909

STONE DUMPED RIPRAP, CLASS A4  
 4 m x 4 m x 450 mm THICKNESS  
 SHAPE TO FIT EXISTING CHANNEL



REVISIONS	
NAME	DATE

ILLINOIS DEPARTMENT OF TRANSPORTATION  
**PLAN AND PROFILE**  
**ILLINOIS ROUTE 40**  
 FRONTAGE ROAD NO. 3  
 STA. 1+030 TO STA. 1+200  
 SCALE: 1:400 H / 1:40 V  
 DATE: 03/13/09  
 DRAWN BY: JRC, JDU  
 CHECKED BY: ECM