

INDEX OF SHEETS

- 1 COVER SHEET
- 2 GENERAL NOTES AND TYPICAL SECTION
- 3 SUMMARY OF QUANTITIES, APPLICATION RATES,
BITUMINOUS MIXTURE REQUIREMENTS, SCHEDULE OF QUANTITIES
- 4-5 PLAN SHEETS
- 6-8 DETAILS

STATE OF ILLINOIS VILLAGE OF CREVE COEUR PLANS FOR PROPOSED LOCAL AGENCY IMPROVEMENT FEDERAL-AID PROJECT

HIGHWAY STANDARDS

- 442201-03 CLASS C AND D PATCHES
- 701201-03 LANE CLOSURE, 2L, 2W, DAY ONLY, FOR SPEEDS > 45 MPH
- 701421-02 LANE CLOSURE, MULTILANE, DAY OPERATIONS ONLY, FOR SPEEDS > 45 TO 55 MPH
- 701501-05 URBAN LANE CLOSURE, 2L, 2W, UNDIVIDED
- 701901-01 TRAFFIC CONTROL DEVICES

**FISCHER AVENUE – FAU 6718
SECTION: 09-00005-00-RS
PROJECT: ARA-5093(145)
TAZEWELL COUNTY
JOB #: C-94-118-09**

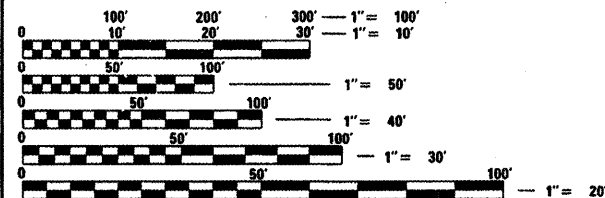
UTILITIES

VILLAGE OF CREVE COEUR (WATER & SEWER)
995 WESLEY ROAD
CREVE COEUR, IL 61610
JEFF SHEFFLER 309-678-1208

AMEREN CILCO (GAS & ELECTRIC)
110 W. MONARCH ST.
PEORIA, IL 61602
KENT KOWALSKIE 309-264-5575 (GAS)
TOM KOEPEL 309-693-4702 (ELECTRIC)

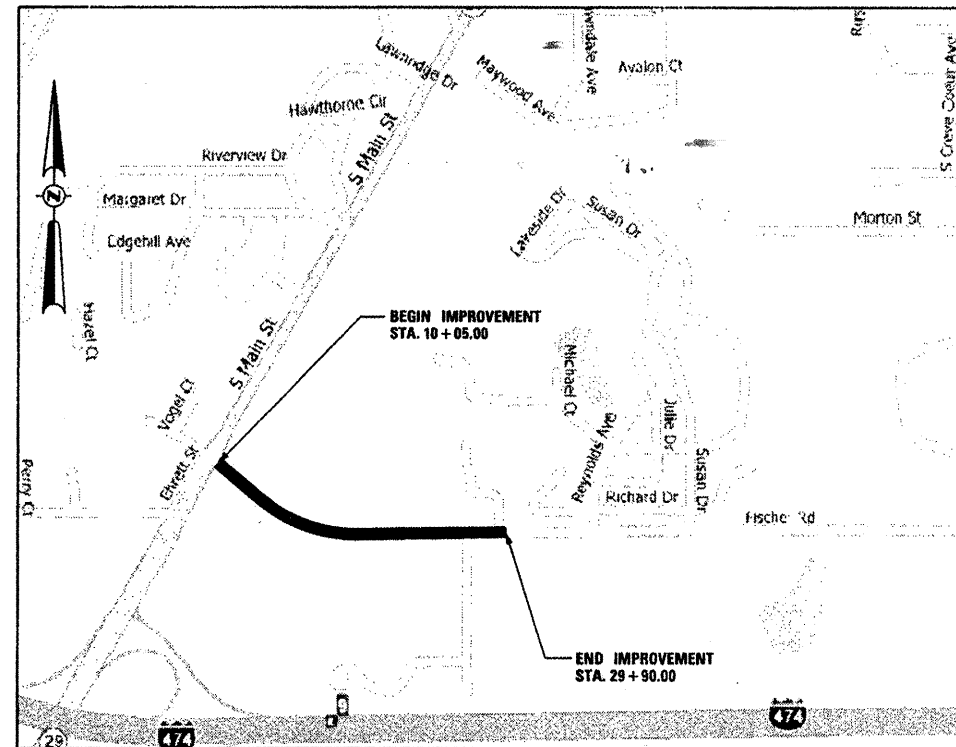
INSIGHT COMMUNICATIONS (CABLE)
3517 N. DRIES LANE
PEORIA, IL 61604
309-686-2600

AT&T (TELEPHONE)
2315 N. KNOXVILLE
PEORIA, IL 61604



FULL SIZE PLANS HAVE BEEN PREPARED USING STANDARD ENGINEERING SCALES. REDUCED SIZED PLANS WILL NOT CONFORM TO STANDARD SCALES. IN MAKING MEASUREMENTS ON REDUCED PLANS, THE ABOVE SCALES MAY BE USED.

J.U.L.I.E.
JOINT UTILITY LOCATION INFORMATION FOR EXCAVATION
1-800-892-0123

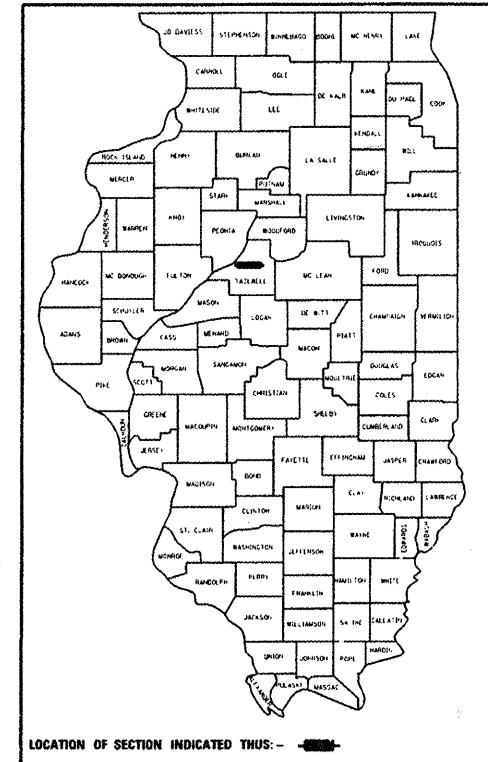


LOCATION MAP

(NOT TO SCALE)

FUNCTIONAL CLASSIFICATION = MINOR COLLECTOR
LENGTH OF IMPROVEMENT = 1985 FEET = .38 MILE

CONTRACT NO. 89536



LOCATION OF SECTION INDICATED THUS: - [Symbol] -



APPROVED *Wayne Baker*
VILLAGE OF CREVE COEUR, MAYOR WAYNE BAKER

PASSED *John Laballe*
DISTRICT FOUR ENGINEER OF
LOCAL ROADS & STREETS

Releasing For Bid Based on Limited Review *M. M. M. M.*
DEPUTY DIRECTOR OF HIGHWAYS,
REGION THREE ENGINEER
STATE OF ILLINOIS
DEPARTMENT OF TRANSPORTATION

Alicia M. Hermann
ALICIA M. HERMANN
05/19/09 11/30/09
DATE EXPIRES

HERMANN & ASSOCIATES, LLC
CONSULTING ENGINEERS
5835 NORTH GALENA ROAD
PEORIA, ILLINOIS 61614
PHONE: (309) 687-5566
FAX: (309) 687-0571
ILLINOIS PROFESSIONAL DESIGN FIRM NO. 184.004714

PRINTED BY THE AUTHORITY
OF THE STATE OF ILLINOIS

TRANSPORTATION • MUNICIPAL ENGINEERING • LAND DEVELOPMENT
ASBESTOS INSPECTION • CONSTRUCTION OBSERVATION