

STATE OF ILLINOIS  
DEPARTMENT OF TRANSPORTATION  
DIVISION OF HIGHWAYS

ROUTE NO.	SECTION	COUNTY	TOTAL SHEETS	SHEET NO.
F.A.S. 428 C.H. 11	96-00094-00-RS	HANCOCK	8	1
F.H.W.A. REG. NO. 4	ILLINOIS	BASCO ROAD		
CONTRACT NO. 93490				

# PLANS FOR PROPOSED SURFACE TRANSPORTATION / RURAL PROGRAM (w/ ARRA & TARP)

**BASCO ROAD**  
**F.A.S. RTE 428 (C. H. 11)**  
**SECTION 96-00094-00-RS**  
**HANCOCK COUNTY**  
**PROJECT ARA-SR-428 (103)**  
**JOB NO. C-96-205-01**

**INDEX OF SHEETS**

SHEET NO.	TITLE
1	COVER SHEET
2	SUMMARY OF QUANTITIES, GENERAL NOTES, & TYPICAL SECTION
3	BUTT - JOINT, ENTRANCE, MAILBOX TURNOUT, & SIDE ROAD DETAILS
4	STEEL RAILING, TYPE 2399 (SPECIAL)
5 - 8	PLAN & PROFILE

**HIGHWAY STANDARDS**

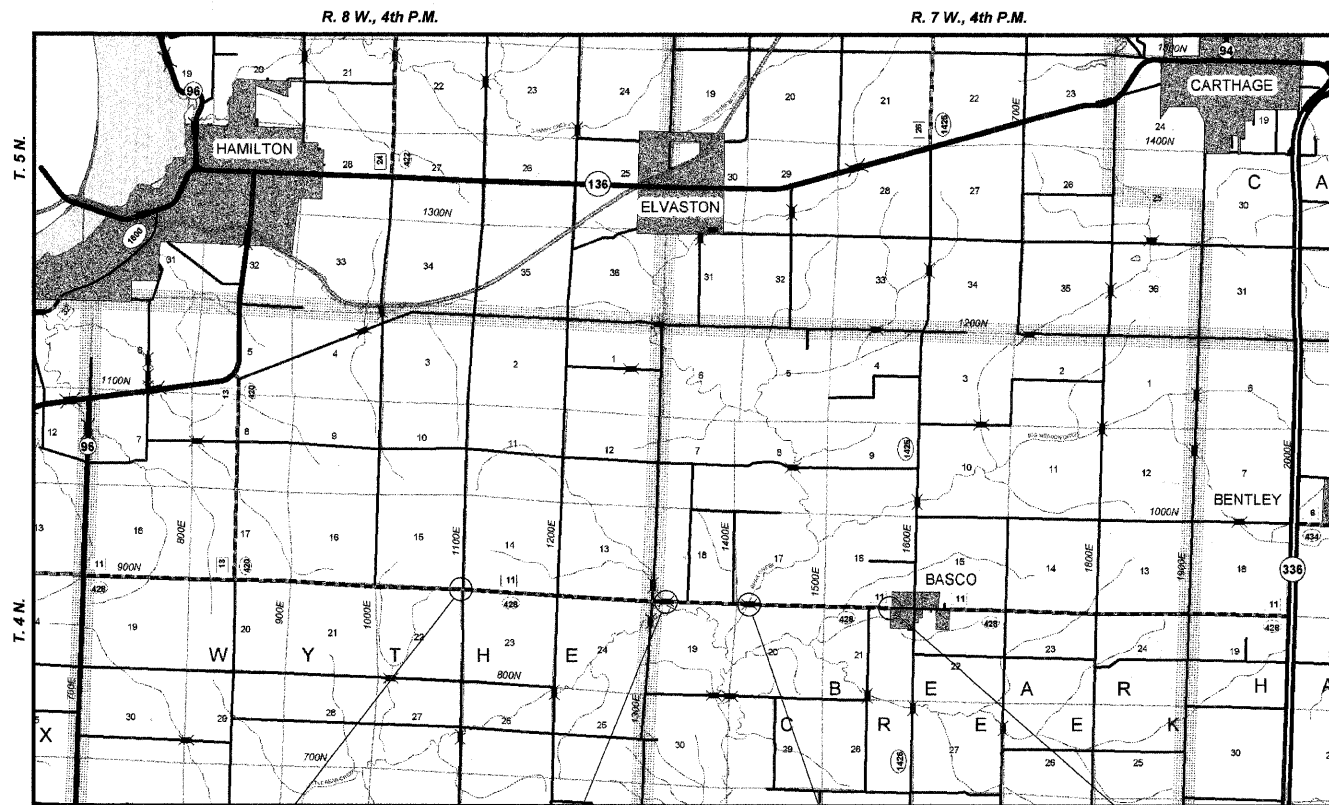
631011-05	701301-03
635001-01	701306-02
635006-03	701901-01
635011-02	B.L.R. 23-3
701001-02	B.L.R. 24-2
701006-03	B.L.R. 26-1
701011-02	B.L.R. 27-1
701201-03	

**UTILITIES**

AMEREN CIPS	217-347-3141
DALLAS RURAL WATER DIST.	309-337-3718
FRONTIER COMMUNICATIONS	420-250-1095
LIGHTCORE (DIGITAL TELEPORT)	636-887-4752
McLEOD USA	217-876-7194 ext. 240
NICOR GAS	630-388-2362
WIEC	217-357-3125

TOLL FREE JOINT UTILITY LOCATING  
INFORMATION FOR EXCAVATORS (J.U.L.I.E.)  
TELEPHONE NUMBER 1-800-892-0123

CONTRACT NO. 93490



IMPROVEMENT BEGINS  
STA. 219+50

LOCATION PLAN

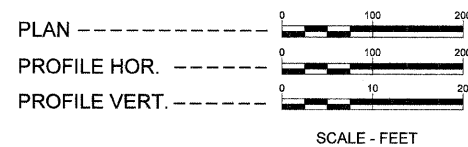
IMPROVEMENT ENDS  
STA. 471+00

BRIDGE OMISSION: S.N. 034-3110  
STA. 338+34.25 TO STA. 339+05.75

BRIDGE OMISSION: S.N. 034-3112  
STA. 385+92 TO STA. 387+74

TOTAL LENGTH OF SECTION = 25,150.00 FEET = 4.763 MILES  
NET LENGTH OF SECTION = 24,896.50 FEET = 4.715 MILES

**SCALES**

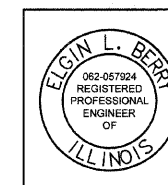


HIGHWAY CLASS: MAJOR COLLECTOR

DESIGN: 3R

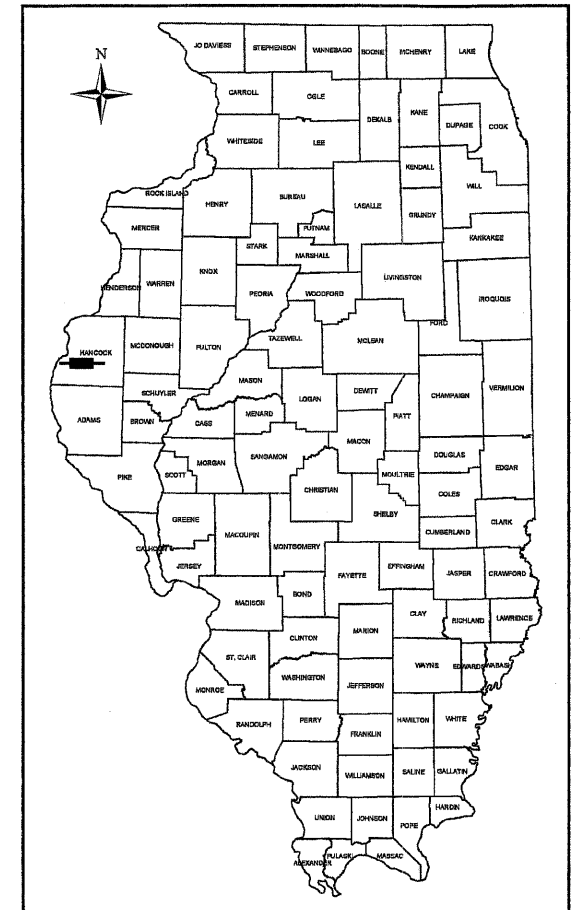
DESIGN SPEED: 50 MPH

ADT: 850



I HEREBY CERTIFY THAT THESE PLANS WERE PREPARED BY ME OR UNDER MY DIRECT PERSONAL SUPERVISION AND THAT I AM A DULY LICENSED PROFESSIONAL ENGINEER IN ACCORDANCE WITH THE LAWS OF THE STATE OF ILLINOIS.

Elgin Berry 4/6/09  
ELGIN L. BERRY LICENSE # 062-057924 EXPIRES 11/30/2009



LOCATION OF SECTION INDICATED THUS: ———

APPROVED	April 6 20 09
	Elgin Berry COUNTY ENGINEER
PASSED	MAY 21 20 09
	Tommy Ford DISTRICT SIX ENGINEER OF LOCAL ROADS & STREETS
PASSED	MAY 21 20 09
	Ken Ackerman DISTRICT SIX ENGINEER OF CONSTRUCTION
Releasing For Bid Based on Limited Review	MAY 21 20 09
	Roger J. Dushell III DEPUTY DIRECTOR OF HIGHWAYS, REGION FOUR ENGINEER
STATE OF ILLINOIS DEPARTMENT OF TRANSPORTATION	

**SUMMARY OF QUANTITIES**

ROUTE NO.	SECTION	COUNTY	TOTAL SHEETS	SHEET NO.
F.A.S. 428 C.H. 11	95- 00094- 00-RS	HANCOCK	8	2
F.H.W.A. REG. NO. 4		ILLINOIS	BASCO ROAD	
CONTRACT NO. 93490				

CODE NUMBER	ITEM	UNIT	QUANTITY
40200800	AGGREGATE SURFACE COURSE, TYPE B	TON	388
40600100	BITUMINOUS MATERIALS (PRIME COAT)	GAL	19,697
40600300	AGGREGATE (PRIME COAT)	TON	178
40600625	LEVELING BINDER (MACHINE METHOD), N50	TON	5,391
40600895	CONSTRUCTING TEST STRIP	EACH	2
40600982	HOT-MIX ASPHALT SURFACE REMOVAL - BUTT JOINT	SQ YD	592
40600990	TEMPORARY RAMP	SQ YD	104
40603080	HOT-MIX ASPHALT BINDER COURSE, IL 19.0, N50	TON	9,134
40603310	HOT-MIX ASPHALT SURFACE COURSE, MIX "C", N50	TON	5,434
48102100	AGGREGATE WEDGE SHOULDER, TYPE B	TON	5,671
△* XX008030	STEEL RAILING, TYPE 2399 (SPECIAL)	FOOT	519.7
△* XX008031	FURNISH AND INSTALL 6" BLOCK-OUTS	EACH	1,782
△* XX008032	FURNISH AND INSTALL GUARDRAIL POSTS	EACH	885
△ 63100045	TRAFFIC BARRIER TERMINAL, TYPE 2	EACH	8
△ 63100075	TRAFFIC BARRIER TERMINAL, TYPE 5A	EACH	8
△* 63300725	STEEL PLATE BEAM GUARD RAIL (SHORT RADIUS)	FOOT	87.5
△ 63301210	REMOVE AND RE-ERECT STEEL PLATE BEAM GUARD RAIL, TYPE A	FOOT	11,062.5
△* X6330103	REMOVE AND RE-ERECT TRAFFIC BARRIER TERMINAL, TYPE 1 SPECIAL, TANGENT	EACH	1
67100100	MOBILIZATION	L SUM	1
* 70101700	TRAFFIC CONTROL AND PROTECTION	L SUM	1
70300100	SHORT-TERM PAVEMENT MARKING	FOOT	7,545
△ 78200410	GUARDRAIL MARKERS, TYPE A	EACH	72
△* 78201000	TERMINAL MARKER - DIRECT APPLIED	EACH	7
△ LR631020	TRAFFIC BARRIER TERMINAL, TYPE 1	EACH	7

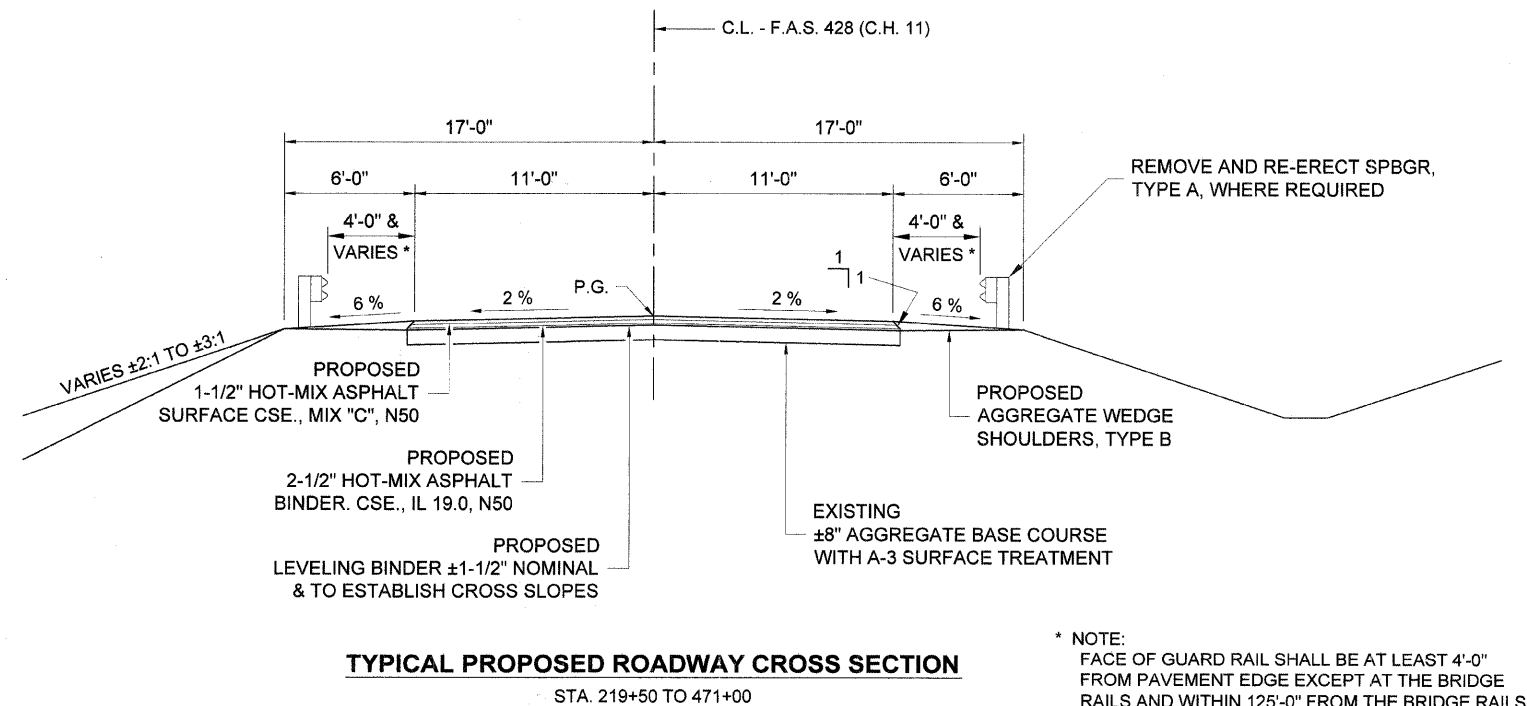
\* SEE SPECIAL PROVISIONS  
 △ SPECIALTY ITEMS  
 CONSTRUCTION TYPE CODE: 1000

**GENERAL NOTES**

- THE NOMINAL THICKNESS FOR BASE AND SURFACE COURSES ARE SHOWN ON THE TYPICAL SECTIONS, STANDARDS, SCHEDULES, OR SPECIAL DETAILS. THE CONSTRUCTED THICKNESS OF THE ABOVE ITEMS SHALL NOT BE LESS THAN 90 PERCENT OF THE NOMINAL THICKNESS AT ANY LOCATION.
- THE THICKNESS OF BITUMINOUS MIXTURE SHOWN ON THE PLANS IS THE NOMINAL THICKNESS. DEVIATIONS FROM THE NOMINAL THICKNESS WILL BE PERMITTED WHEN SUCH DEVIATIONS OCCUR DUE TO IRREGULARITIES IN THE EXISTING SURFACE OR BASE ON WHICH THE BITUMINOUS MIXTURE IS PLACED.
- WHERE SECTION OR SUBSECTION MONUMENTS ARE ENCOUNTERED, THE ENGINEER SHALL BE NOTIFIED BEFORE SUCH MONUMENTS ARE REMOVED. THE CONTRACTOR SHALL PROTECT AND CAREFULLY PRESERVE ALL PROPERTY MARKERS AND MONUMENTS UNTIL THE OWNER AND AN AUTHORIZED SURVEYOR OR AGENT, HAS WITNESSED OR OTHERWISE REFERENCED THEIR LOCATION.
- SHORT-TERM PAVEMENT MARKING SHALL BE SUPPLIED BY THE CONTRACTOR AND SHALL CONFORM TO THE SPECIFICATIONS OF SECTION 703. THE TEMPORARY PAVEMENT MARKING AND THE PERMANENT PAVEMENT MARKING SHALL BE DONE BY OTHERS AS SOON AS POSSIBLE AFTER COMPLETION OF THIS PROJECT.
- THE NOTED APPLICATION RATES ARE FOR QUANTITY CALCULATIONS ONLY. THE APPLICATION RATE TO BE APPLIED WILL BE DETERMINED BY THE ENGINEER AT THE TIME OF PLACEMENT.
- ALL EXISTING ROAD SIGNS THAT CONFLICT WITH THE PROPOSED WORK ZONE TRAFFIC CONTROL MEASURES SHALL BE REMOVED OR COVERED AS DIRECTED BY THE ENGINEER. THIS WORK WILL NOT BE PAID FOR SEPARATELY BUT SHALL BE CONSIDERED AS PART OF THE CONTRACT AND NO ADDITIONAL COMPENSATION WILL BE ALLOWED.
- IT SHALL BE THE CONTRACTOR'S RESPONSIBILITY TO DETERMINE THE EXACT LOCATION OF ALL UTILITIES AND CARRY OUT HIS OR HER OPERATIONS ACCORDINGLY. ADJUSTMENTS OF UTILITY LOCATIONS SHALL BE MADE BY THE OWNER, UNLESS OTHERWISE NOTED.
- THE CONTRACTOR SHALL BE RESPONSIBLE TO MAKE SURE THAT ANY UTILITY ADJUSTMENTS OR REMOVAL HAS BEEN COMPLETED PRIOR TO THE BEGINNING OF CONSTRUCTION.
- TRANSITION AT BEGINNING AND END OF IMPROVEMENT, AND AT EACH BRIDGE 5 1/2" IN 100', OR AS DIRECTED BY THE ENGINEER (SEE BUTT - JOINT DETAIL).
- ALL PLAN ELEVATIONS REPRESENT AN ASSUMED DATUM.
- THE CONTRACTOR SHALL KEEP ONE TRAFFIC LANE OPENED AT ALL TIMES. NO OVERNIGHT LANE CLOSURE SHALL BE PERMITTED.

**ROAD QUANTITIES**

LOCATION	AGG SURF CSE B TON	BIT MATLS PR CT GALLON	AGG PR COAT TON	LEV BIND MM N50 TON	HMA BC IL-19.0 N50 TON	HMA SC "C" N50 TON	AGG WEDGE SHLD TYPE B TON	HMA SURF REM BUTT JT SY	TEMP RAMP SY
ROADWAY STA. 219+50 TO STA. 471+00		17,817	178	5,216	8,504	4,989	5,671		
8 HMA BUTT - JOINT TRANSITIONS		592		40	192	168		592	104
53 ENTRANCES	318	424			159	106			
18 MAILBOX TURNOUTS		144			54	36			
9 SIDE ROADS	70	720		135	225	135			
<b>TOTALS</b>	<b>388</b>	<b>19,697</b>	<b>178</b>	<b>5,391</b>	<b>9,134</b>	<b>5,434</b>	<b>5,671</b>	<b>592</b>	<b>104</b>



\* NOTE:  
 FACE OF GUARD RAIL SHALL BE AT LEAST 4'-0" FROM PAVEMENT EDGE EXCEPT AT THE BRIDGE RAILS AND WITHIN 125'-0" FROM THE BRIDGE RAILS.

**HOT-MIX ASPHALT MIXTURE REQUIREMENTS**

ITEM	AGGREGATE COMPOSITION	ASPHALT GRADE	VOIDS
LEVELING BINDER (MACHINE METHOD), N50	IL 9.5 or 12.5	PG 64-22	4.0% @ N50
HOT-MIX ASPHALT BINDER COURSE	IL 19.0	PG 64-22	4.0% @ N50
HOT-MIX ASPHALT SURFACE COURSE	IL 9.5 or 12.5 Mix "C"	PG 64-22	4.0% @ N50

**APPLICATION RATES USED IN QUANTITY CALCULATIONS**

AGGREGATE SURFACE CSE, TYPE B	2.05 TON / CU. YD.
AGGREGATE SHOULDERS, TYPE B	2.05 TON / CU. YD.
AGGREGATE (PRIME COAT)	2 LBS. / SQ. YD.
BITUMINOUS MATERIALS (PRIME COAT)	0.10 GAL. / SQ. YD.
HOT MIX ASPHALT (SURFACE & BINDER)	112 LBS. / SQ. YD. / IN.

**SUMMARY OF QUANTITIES, GENERAL NOTES, & TYPICAL CROSS SECTION**

**SECTION 96-00094-00-RS**  
**F.A.S. 428 (C.H. 11)**  
**HANCOCK COUNTY**

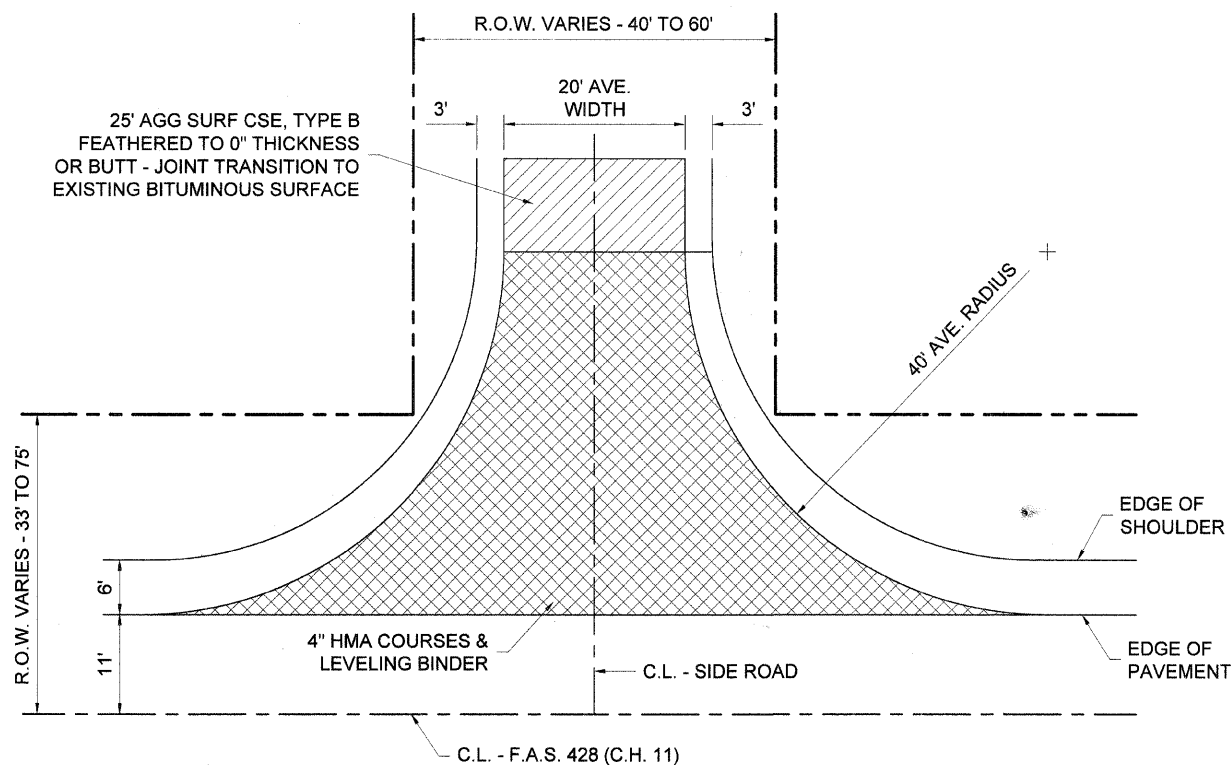
### ENTRANCE SCHEDULE

LOCATIONS			
STATION	SIDE	STATION	SIDE
220+21	RT	362+15	LT
221+00 S.R.	RT	363+68	RT
221+00 S.R.	RT	366+00	RT
227+90	RT	378+35	RT
237+40	LT	379+50	RT
239+77	RT	393+60	LT
247+60	LT	399+27	RT
249+55	RT	401+20	LT
249+55	LT	405+30	LT
257+10	RT	410+65	RT
259+30	RT	412+15	LT
260+40	LT	421+11	RT
261+23	RT	422+16	RT
268+95	LT	425+50	RT
273+83	RT	426+50	LT
289+30	LT	432+16	LT
290+11	LT	441+51	RT
290+36	RT	441+74	LT
290+47	LT	452+13	RT
292+00	LT	453+00	LT
296+31	RT	454+96	LT
297+60	RT	459+75	LT
304+32	LT	461+12	RT
305+57	RT	461+22	LT
323+00	RT	465+61	LT
323+00	LT	466+58	RT
362+15	RT		
53 ENTRANCES			
MATERIALS PER ENTRANCE			
AGG SURF CSE B		6 TON	
BIT MATLS PR CT		8 GAL	
HMA BC IL-19.0 N50		3 TON	
HMA SC "C" N50		2 TON	

### SIDE ROAD SCHEDULE

LOCATIONS		
STATION	SIDE	SURFACE
221+00	RT	BITUMINOUS
221+00	LT	BITUMINOUS
276+62	RT	AGGREGATE
276+62	LT	AGGREGATE
332+00	RT	AGGREGATE
332+00	LT	AGGREGATE
352+52	LT	AGGREGATE
378+78	LT	AGGREGATE
458+55	RT	AGGREGATE
9 SIDE ROADS		
MATERIALS PER SIDEROAD		
BIT MATLS PR CT		80 GAL
LEV BIND MM N50		15 TON
HMA BC IL-19.0 N50		25 TON
HMA SC "C" N50		15 TON
AGG SURF CSE B		10 TON

\* AGG SURF CSE B - SIDEROADS ONLY



**SIDE ROAD DETAIL**

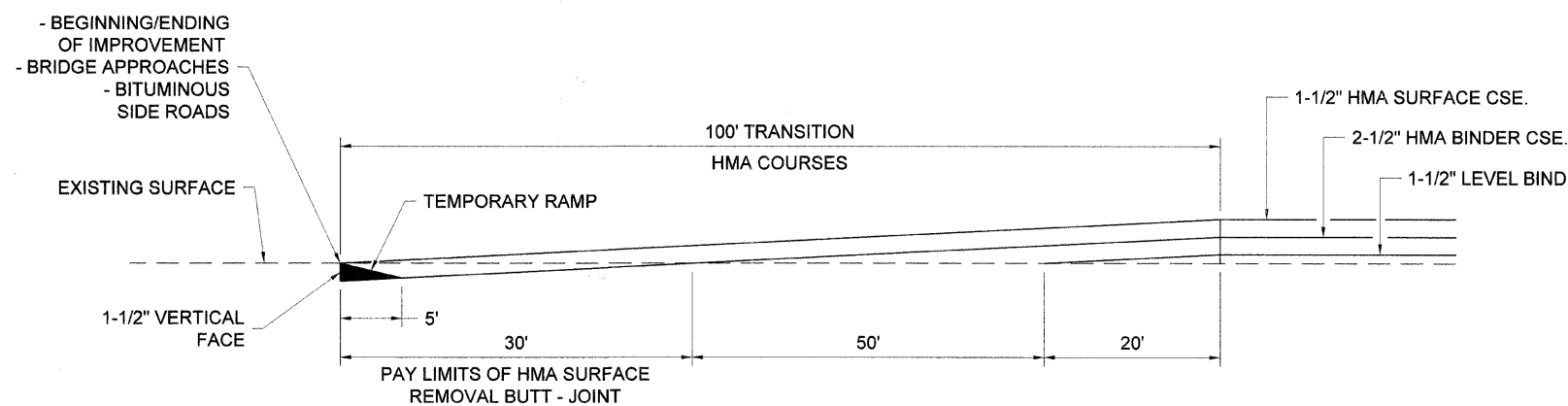
### MAILBOX TURNOUT SCHEDULE

LOCATIONS			
STATION	SIDE	STATION	SIDE
220+18	LT	401+00	LT
221+95	LT	404+75	RT
260+15	LT	412+00	LT
268+70	LT	420+50	RT
290+33	LT	426+05	RT
296+15	RT	441+74	RT
305+32	RT	451+72	RT
363+50	LT	453+25	LT
399+52	RT	460+97	LT
18 MAILBOX TURNOUTS			
MATERIALS PER MAILBOX TURNOUT			
BIT MATLS PR CT		8 GAL	
HMA BC IL-19.0 N50		3 TON	
HMA SC "C" N50		2 TON	

NOTE: SEE STANDARD B.L.R. 24-2 FOR DETAILS

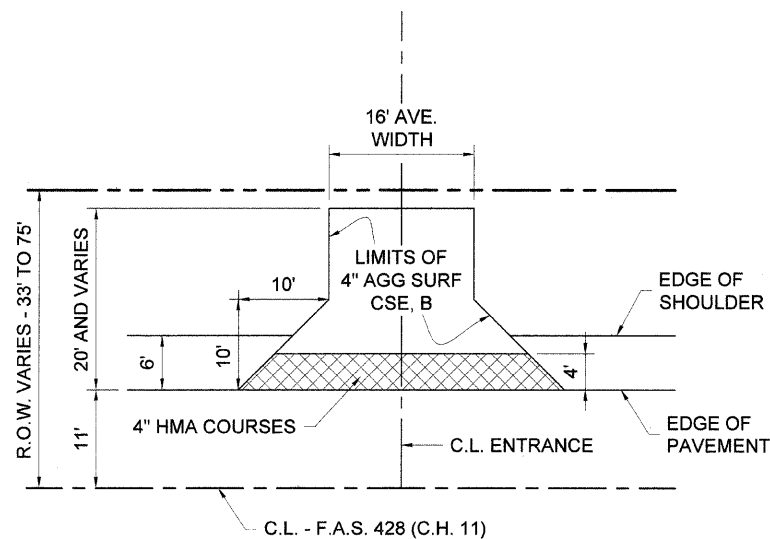
### BUTT - JOINT SCHEDULE

LOCATIONS			
STATION	SIDE	STATION	SIDE
219+50	C.L.	339+05.75	C.L.
221+00	RT	385+92	C.L.
221+00	LT	387+74	C.L.
338+34.25	C.L.	471+00	C.L.
8 BUTT - JOINTS			
MATERIALS PER BUTT - JOINT			
BIT MATLS PR CT		74 GAL	
LEV BIND MM N50		5 TON	
HMA SURF REM BUTT JT		74 SY	
TEMPORARY RAMP		13 SY	
HMA BC IL-19.0 N50		24 TON	
HMA SC "C" N50		21 TON	



**BUTT - JOINT DETAIL**

NOTE: BINDER CSE. AND LEVELING BINDER SHALL BE FEATHERED TO 0" THICKNESS.

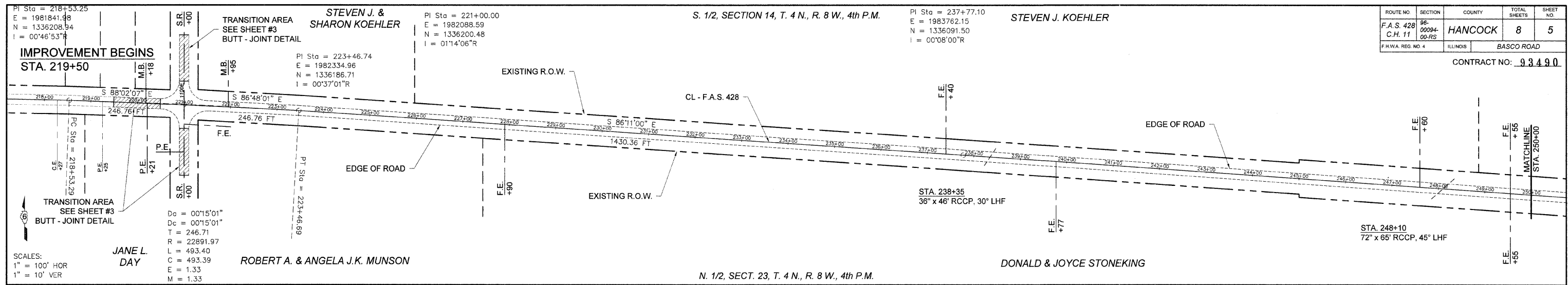


**ENTRANCE DETAIL**

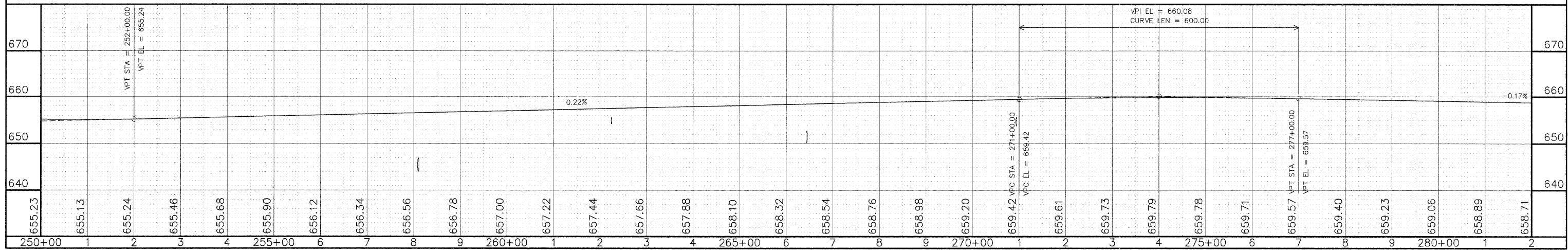
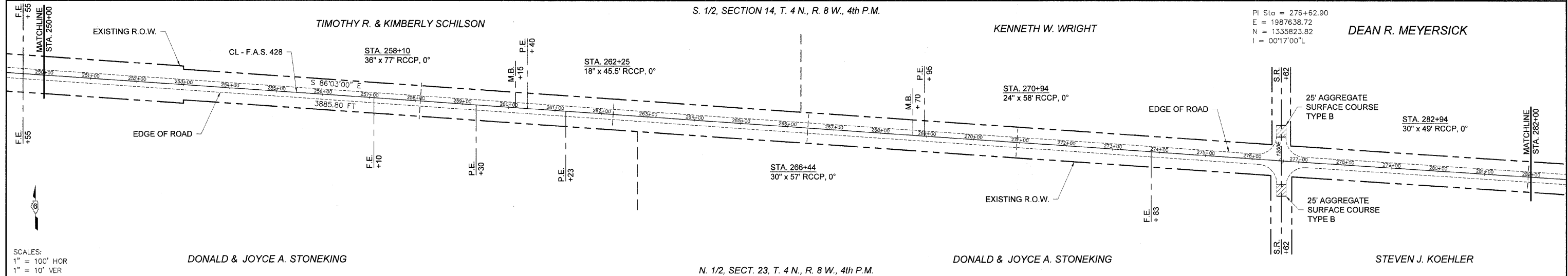
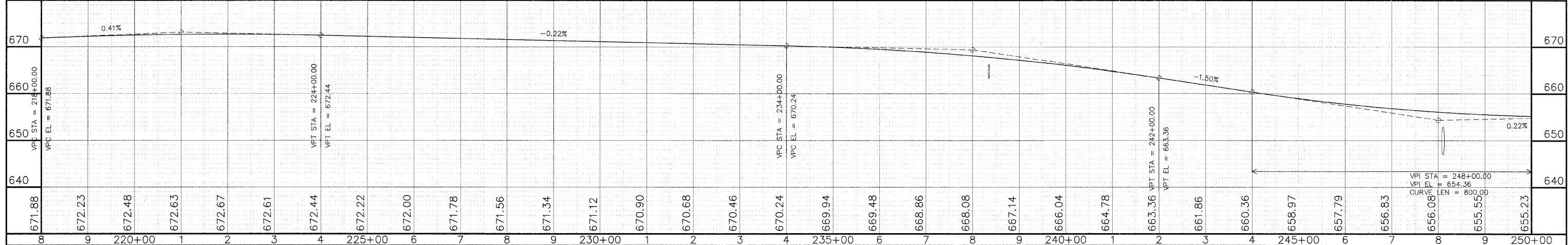
**BUTT - JOINT, ENTRANCE,  
MAILBOX TURNOUT, & SIDE ROAD DETAILS**

SECTION 96-00094-00-RS  
F.A.S. 428 (C.H. 11)  
HANCOCK COUNTY

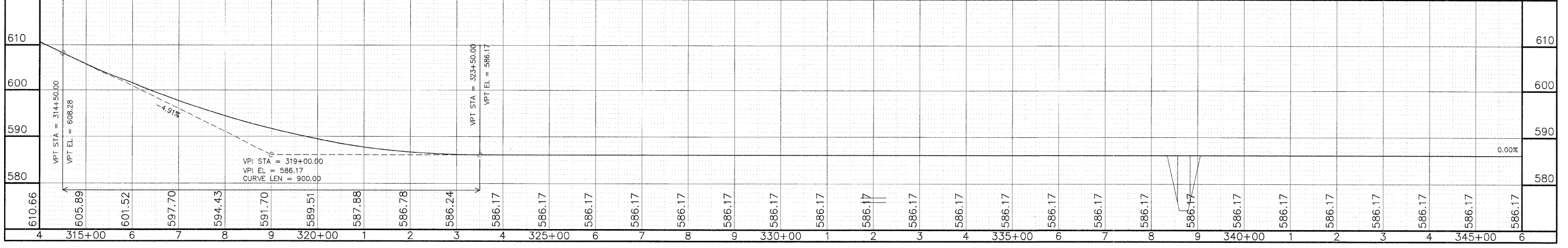
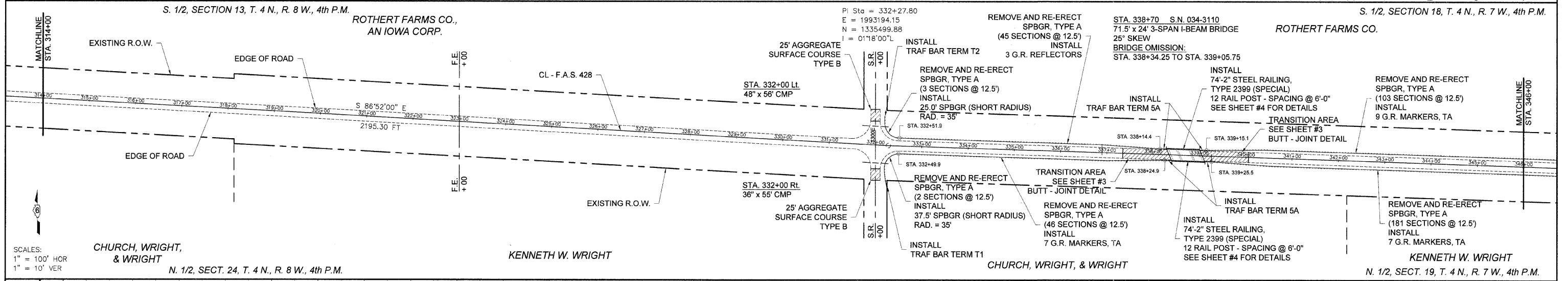
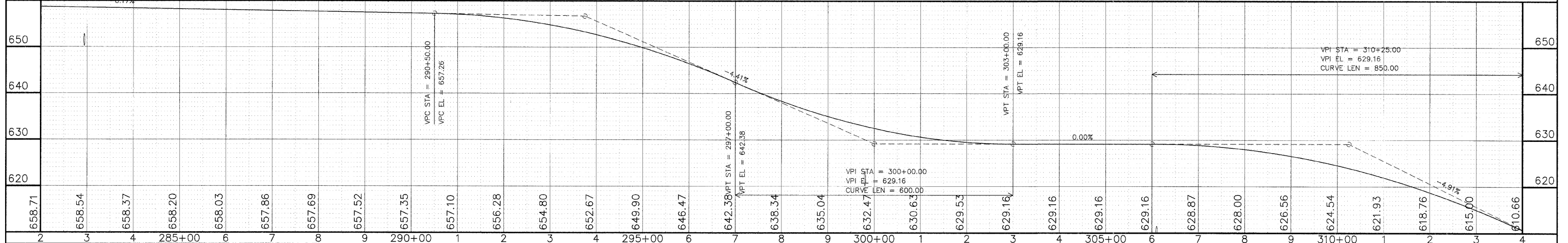
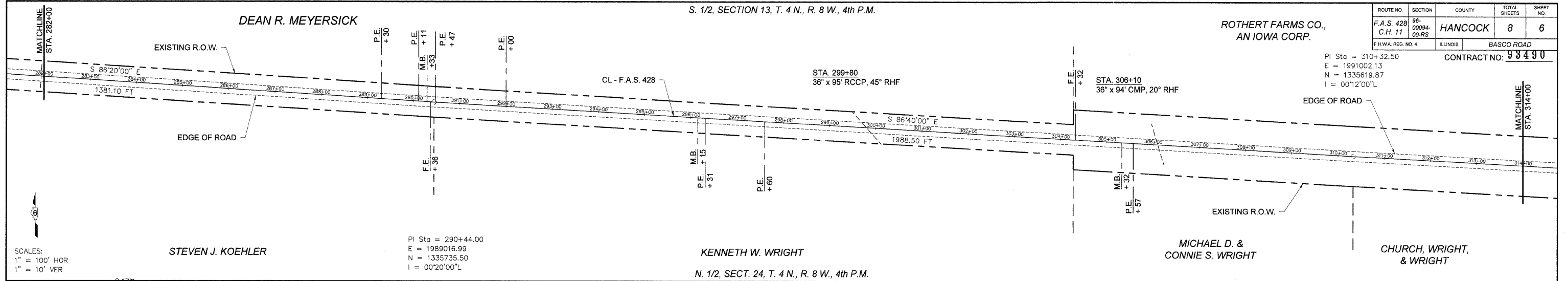




ROUTE NO.	SECTION	COUNTY	TOTAL SHEETS	SHEET NO.
F.A.S. 428	96-0094-00-RS	HANCOCK	8	5
F.H.W.A. REG. NO. 4		ILLINOIS BASCO ROAD		







ROTHERT FARMS CO.

STA. 352+52 Lt.  
42' x 72' CMP

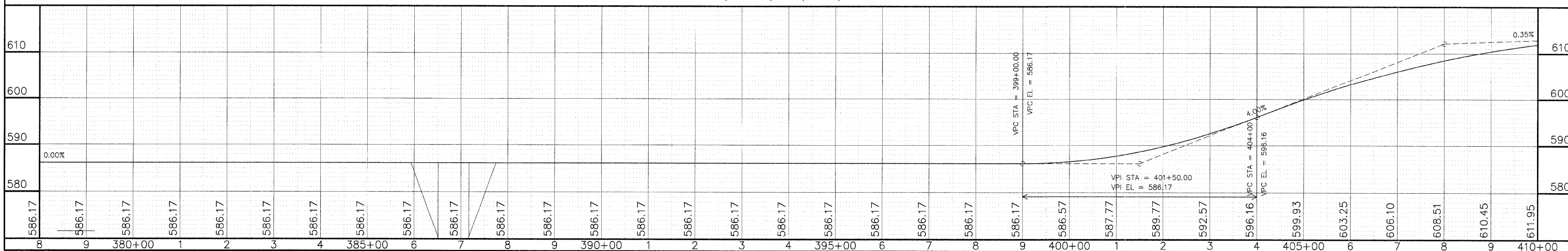
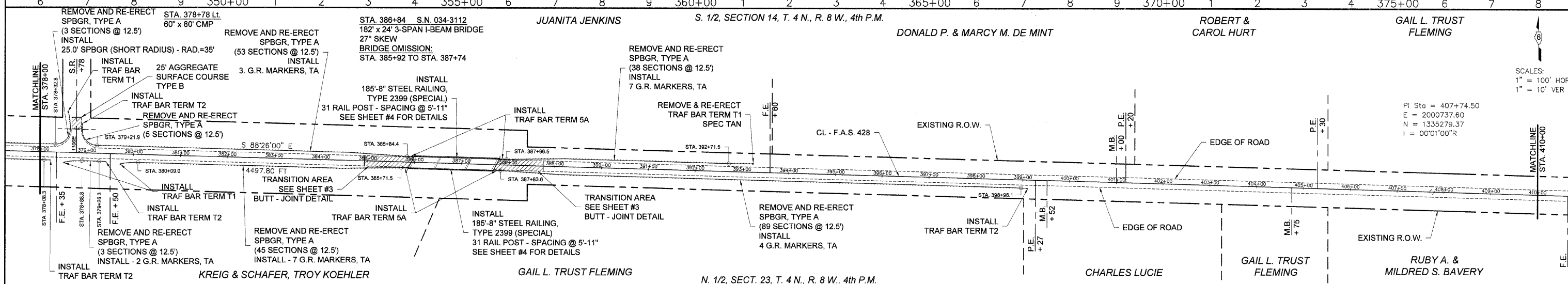
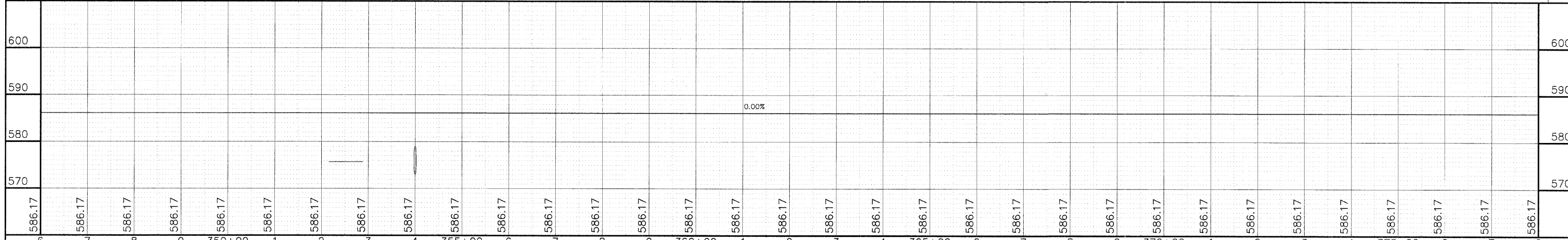
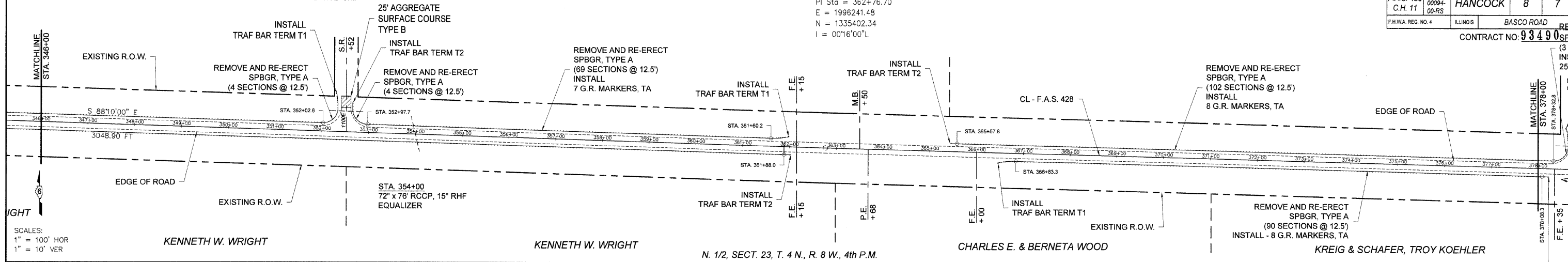
BRIAN M. SCHRADER

S. 1/2, SECTION 14, T. 4 N., R. 8 W., 4th P.M.

GARY D. & CARLA J. JACOBS

ROUTE NO.	SECTION	COUNTY	TOTAL SHEETS	SHEET NO.
F.A.S. 428	96-00094-00-RS	HANCOCK	8	7
F.H.W.A. REG. NO. 4		ILLINOIS	BASCO ROAD	

CONTRACT NO. 93490



GAIL L. TRUST FLEMING

S. 1/2, SECTION 14, T. 4 N., R. 8 W., 4th P.M.

GAIL L. REVOCABLE FLEMING

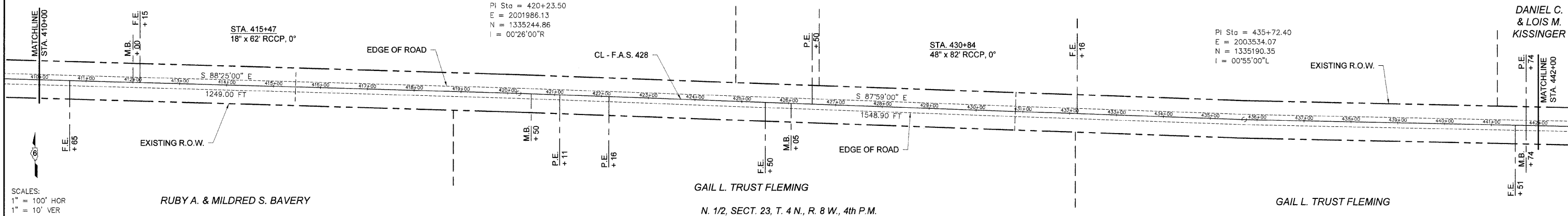
GAIL L. TRUST FLEMING

CURTIS J. JR. AYERS

ROUTE NO.	SECTION	COUNTY	TOTAL SHEETS	SHEET NO.
F.A.S. 428	96-0004-00-RS	HANCOCK	8	8
F.H.W.A. REG. NO. 4		ILLINOIS BASCO ROAD		

CONTRACT NO: 93490

DANIEL C. & LOIS M. KISSINGER



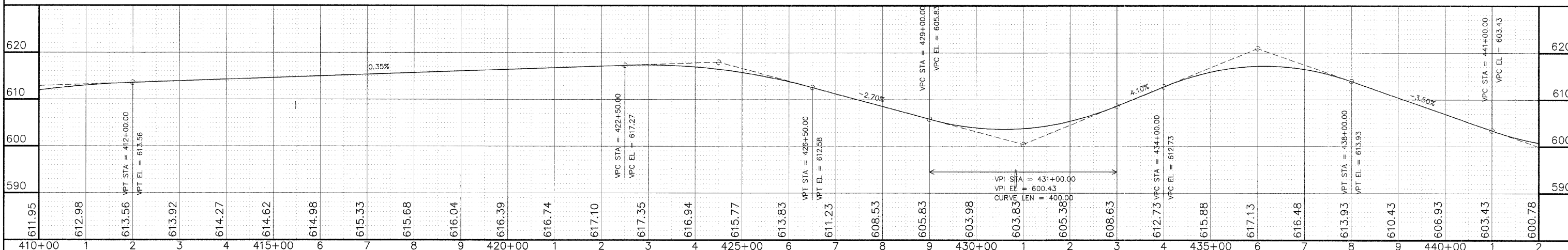
SCALES: 1" = 100' HOR, 1" = 10' VER

RUBY A. & MILDRED S. BAVERY

GAIL L. TRUST FLEMING

N. 1/2, SECT. 23, T. 4 N., R. 8 W., 4th P.M.

GAIL L. TRUST FLEMING



410+00 1 2 3 4 415+00 6 7 8 9 420+00 1 2 3 4 425+00 6 7 8 9 430+00 1 2 3 4 435+00 6 7 8 9 440+00 1 2

620 610 600 590

611.95 612.98 613.56 613.92 614.27 614.62 614.98 615.33 615.68 616.04 616.39 616.74 617.10 617.35 616.94 615.77 613.83 611.23 608.53 605.83 603.98 603.83 605.38 608.63 612.73 615.88 617.13 616.48 613.93 610.43 606.93 603.43 600.78

DANIEL C. & LOIS M. KISSINGER CURTIS J. JR. AYERS MICHAEL L. & DIANE A. HURT CEMETERY SHANE C. & CYNTHIA R. HUSSEY WILLIAM A. TRUST JACQUOT ANDREW V. BELKNAP

GAIL L. TRUST FLEMING DAVID D. & MELISSA J. HULS GAIL L. TRUST FLEMING DENNIS & MARTHA A. HULS LUAN C. TRUST RICHARDSON SANDRA KAY KIRBY

IMPROVEMENT ENDS STA. 471+00

PI Sta = 452+99.80, E = 2005261.15, N = 1335157.19, I = 00°00'00"L; PI Sta = 460+76.50, E = 2006037.71, N = 1335142.28, I = 00°00'00"R

STA. 442+90 (84" x 65" RCCP, 0°), STA. 458+38 (24" x 84" RCCP, 0°), STA. 469+44 (48" x 78" RCCP, 0°)

Angles: S 88°54'00" E, S 88°54'00" E

Distances: 1727.40 FT, 776.70 FT, 1548.50 FT

Labels: EXISTING R.O.W., EDGE OF ROAD, CL - F.A.S. 428, 25' AGGREGATE SURFACE COURSE TYPE B, TRANSITION AREA SEE SHEET #3 BUTT - JOINT DETAIL

SCALES: 1" = 100' HOR, 1" = 10' VER

630 620 610 600

600.78 599.83 600.58 603.03 606.33 609.63 612.93 616.23 619.53 622.83 625.60 627.33 628.01 627.63 626.73 625.83 624.93 624.03 623.13 622.23 621.33 620.43 619.53 618.71 618.41 618.71 619.62 621.13 623.24 625.96 629.16 631.71 633.22

445+00 6 7 8 9 450+00 1 2 3 4 455+00 6 7 8 9 460+00 1 2 3 4 465+00 6 7 8 9 470+00 1 2 3 4