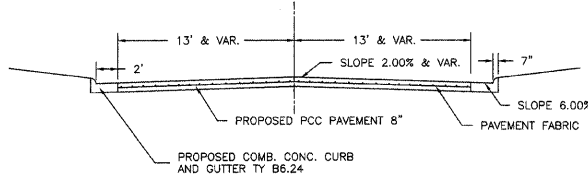
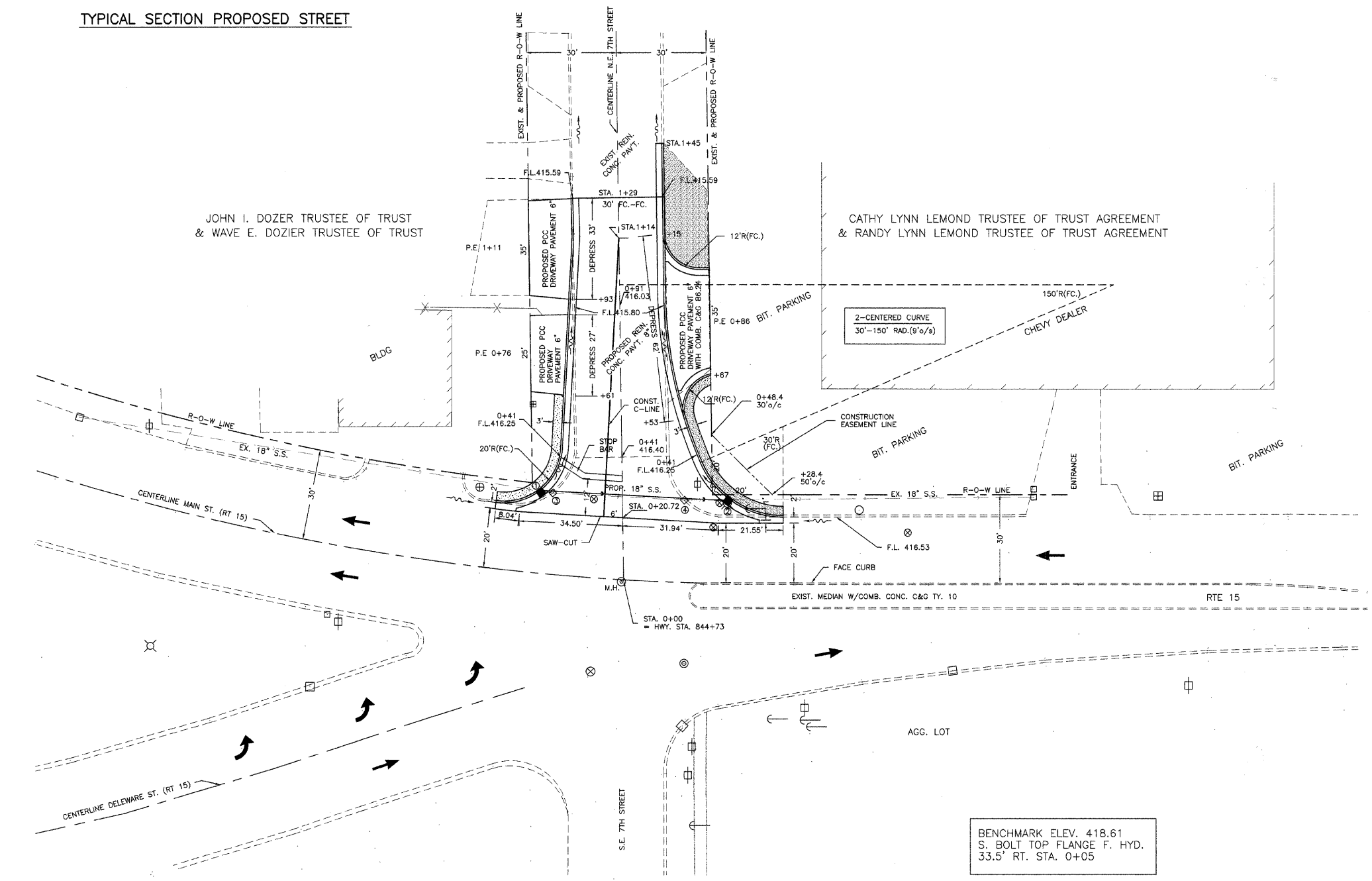


SECTION	06-00046-00-RS	TOTAL SHEETS	SHEET NO.
CITY	FAIRFIELD	6	5
STA. 0+00		TO STA. 1+29	

CONTRACT NO. 95575



TYPICAL SECTION PROPOSED STREET



QUANTITIES THIS SHEET

PCC PAVEMENT REINFORCED 8"
 STA. 0+20.72 TO STA. 1+27 = 414 SQ. YD.

PAVEMENT REMOVAL
 STA. 0+20.72 TO STA. 1+29 = 407 SQ. YD.
 RT. STA. 1+27 TO STA. 1+45 = 5 SQ. YD.
 TOTAL = 412 SQ. YD.

PAVEMENT REMOVAL SPECIAL
 LT. STA. 0+20.72 TO STA. 0+81 = 34 SQ. YD.
 RT. STA. 0+20.72 TO STA. 0+73 = 68 SQ. YD.
 TOTAL = 102 SQ. YD.
 (SEE SPECIAL PROV.)

COMB. CONCRETE CURB & GUTTER, TYPE B6.24
 LT. STA. 0+20.72 TO STA. 1+29 = 115 FOOT
 RT. STA. 0+20.72 TO STA. 1+45 = 143 FOOT
 P.E.R STA. 0+86 = 42 FOOT
 TOTAL = 300 FOOT

PCC DRIVEWAY PAVEMENT 6"
 LT. STA. 0+76 = 42.4 SQ. YD.
 LT. STA. 1+11 = 51.8 SQ. YD.
 RT. STA. 0+86 = 45.5 SQ. YD.
 TOTAL = 141.1 SQ. YD.

DRIVEWAY PAVEMENT REMOVAL
 LT. STA. 0+76 = 42.4 SQ. YD.
 LT. STA. 1+11 = 51.8 SQ. YD.
 RT. STA. 0+86 = 115.4 SQ. YD.
 TOTAL = 209.6 SQ. YD.

STORM SEWER REMOVAL 18"
 ①-③ = 5 FOOT
 ③-④ = 44 FOOT
 ④-⑤ = 15 FOOT
 TOTAL = 64 FOOT

VALVE BOXES TO BE ADJUSTED
 9' LT. STA. 0+27 = 1 EACH
 32' RT. STA. 0+25 = 1 EACH
 TOTAL = 2 EACH

STORM SEWER TY 1, RCPD CL 4, 18"
 ①-② = 64 FOOT

CONTROLLED LOW STRENGTH MATERIAL
 ①-② (INCLUDES S.S REMOVAL) = 18 CU. YD.

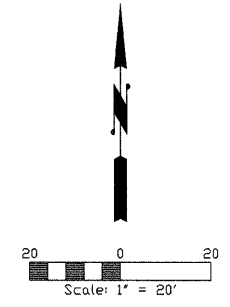
AGGREGATE BASE COURSE TYPE B 6" = 16 TONS
 INCIDENTAL HMA SURFACING 2" = 6 TONS

PCC SIDEWALK, SPECIAL = 135 SQ. FT.
 SUB-BASE GRANULAR MATERIAL, TY C = 7 TONS
 SEE SPECIAL PROVISIONS

DRAINAGE STRUCTURES

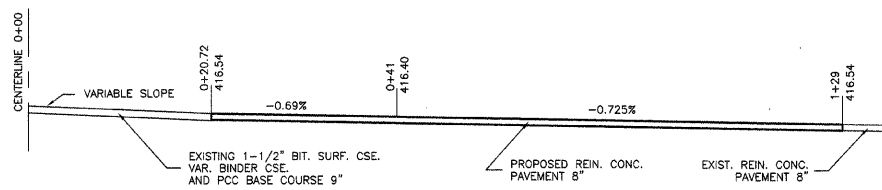
LOCATION	TYPE	GRATE	INVERT
① 38.2' LT. STA. 0+31	INLET TYPE B, TYPE 3 F&G	416.35	412.49
② 48.7' RT. STA. 0+26	INLET TYPE B, TYPE 3 F&G	416.33	412.46
③ 23.2' LT. STA. 0+29	EXISTING INLET TO BE REMOVED		
④ 20.6' RT. STA. 0+26	EXISTING INLET TO BE REMOVED		

BENCHMARK ELEV. 418.61
 S. BOLT TOP FLANGE F. HYD.
 33.5' RT. STA. 0+05



LEGEND

- ⊕ POWER POLE
- ⊕ WATER VALVE
- ⊕ MANHOLE
- ⊕ EXIST. INLET
- ⊕ PROP. INLET
- ⊕ FIRE HYDRANT
- ⊕ MAG NAIL



PROPOSED PROFILE

DATE: 02/23/2005
 REV: 02/23/2005
 SCALE: 1"=20'
 DRAWN BY: DJC
 PROJECT: P-1440

CONNOR & CONNOR, Inc.
 CONSULTING ENGINEERS

209 North Cross Street
 ROBINSON, ILLINOIS 62454

Phone: 618-544-8623
 Fax: 618-544-3012

Licensed Engineers
 Licensed Surveyors

INTERSECTION DETAIL STA. 0+20.72
 SEC. 06-00046-00-RS
 CITY OF FAIRFIELD