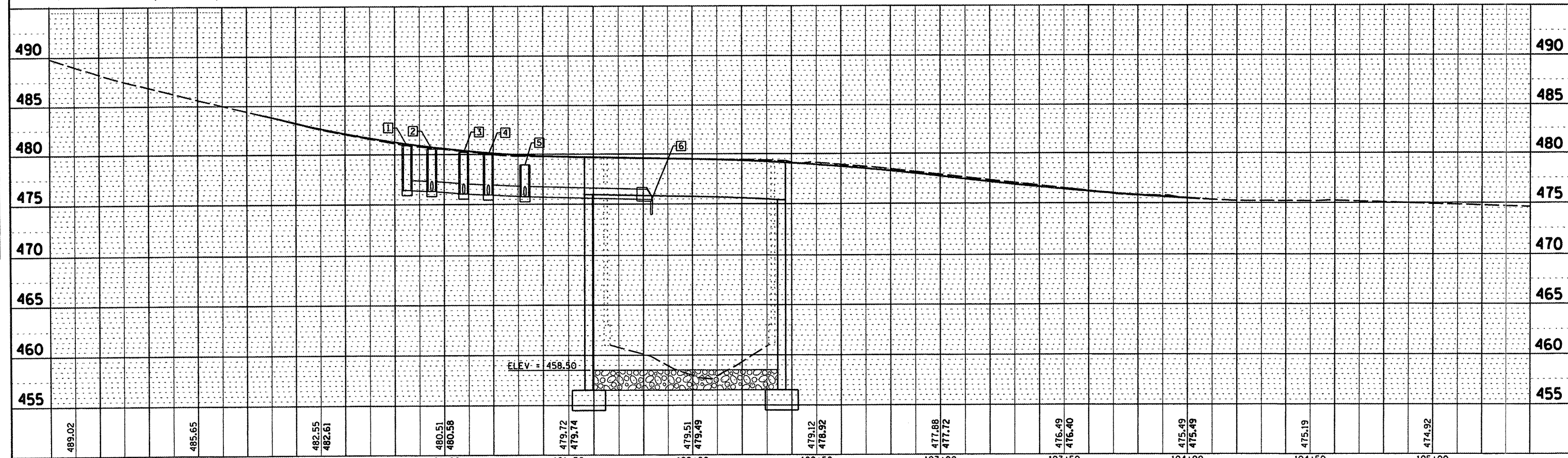
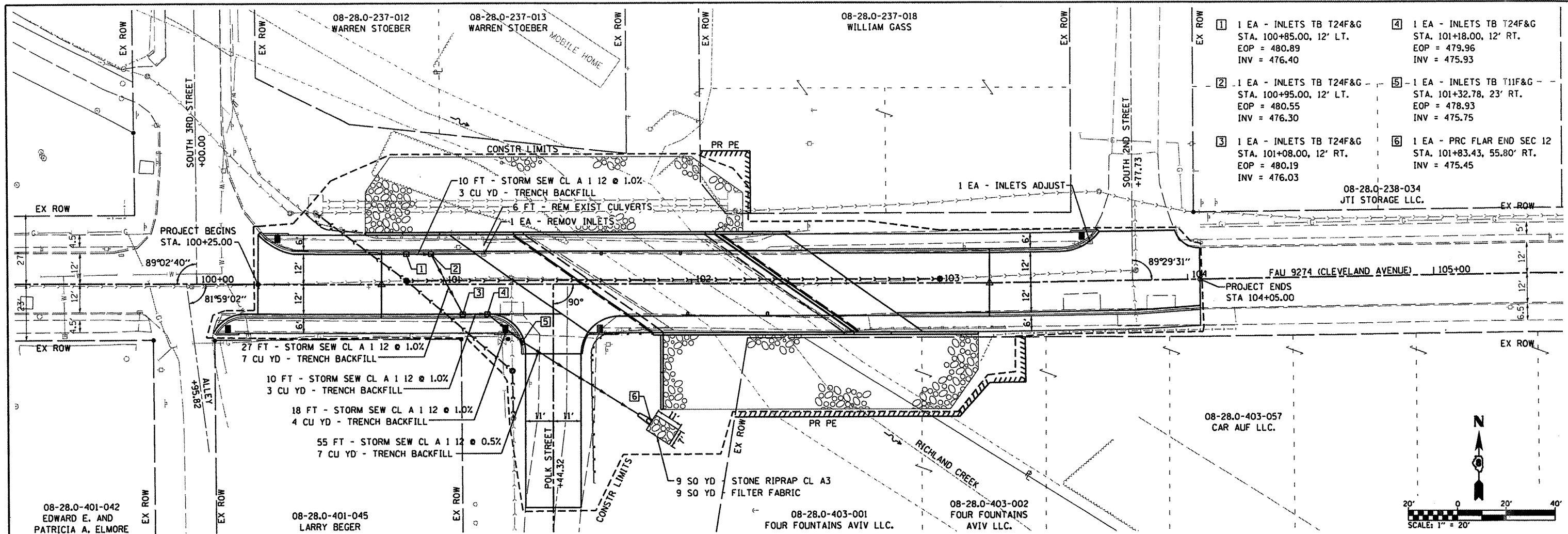


DATE	
BY	
SURVEYED	
ALIGNED	
CHECKED	
NO. OF PAGES	
NO. OF SHEETS	
NO.	

DATE	
BY	
SURVEYED	
PLOTTED	
CHECKED	
NO. OF PAGES	
NO. OF SHEETS	
NO.	



FILE NAME = 27855-sh-t-55p1npr.f.dgn	USER NAME = moisigressor	DESIGNED -	REVISED -	STATE OF ILLINOIS DEPARTMENT OF TRANSPORTATION	STORM SEWER PLAN AND PROFILE SHEET	F.A.U. RTE. = 9274	SECTION = 04-00202-00-BR	COUNTY = ST. CLAIR	TOTAL SHEETS = 55	SHEET NO. = 11	
PLOT SCALE = 48.0000' / IN.	CHECKED -	REVISED -	SCALE: 1"=20'			SHEET NO. OF SHEETS	STA. 100+25.00 TO STA. 104+05.00	FED. ROAD DIST. NO. 7 ILLINOIS FED. AID PROJECT			
PLOT DATE = 3/13/2009	DATE -	REVISED -						CONTRACT NO. 97369			