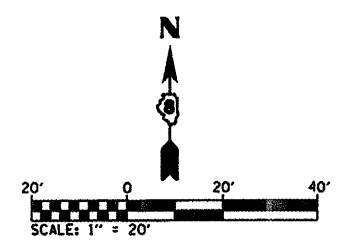
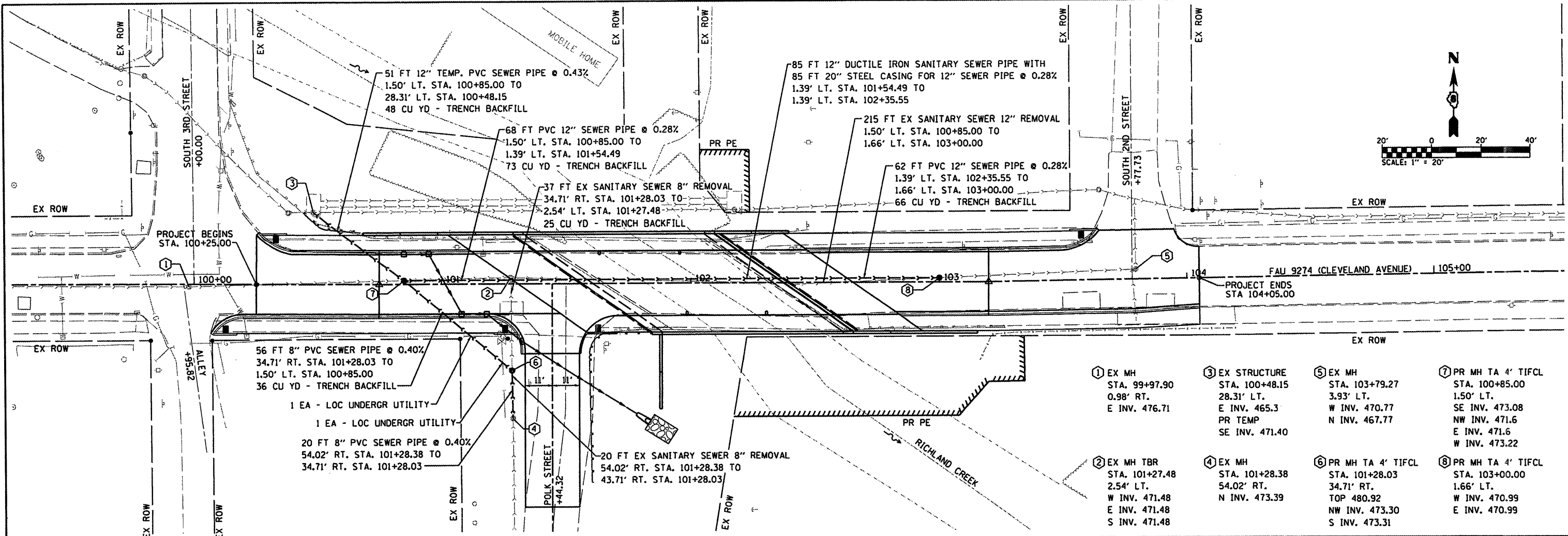


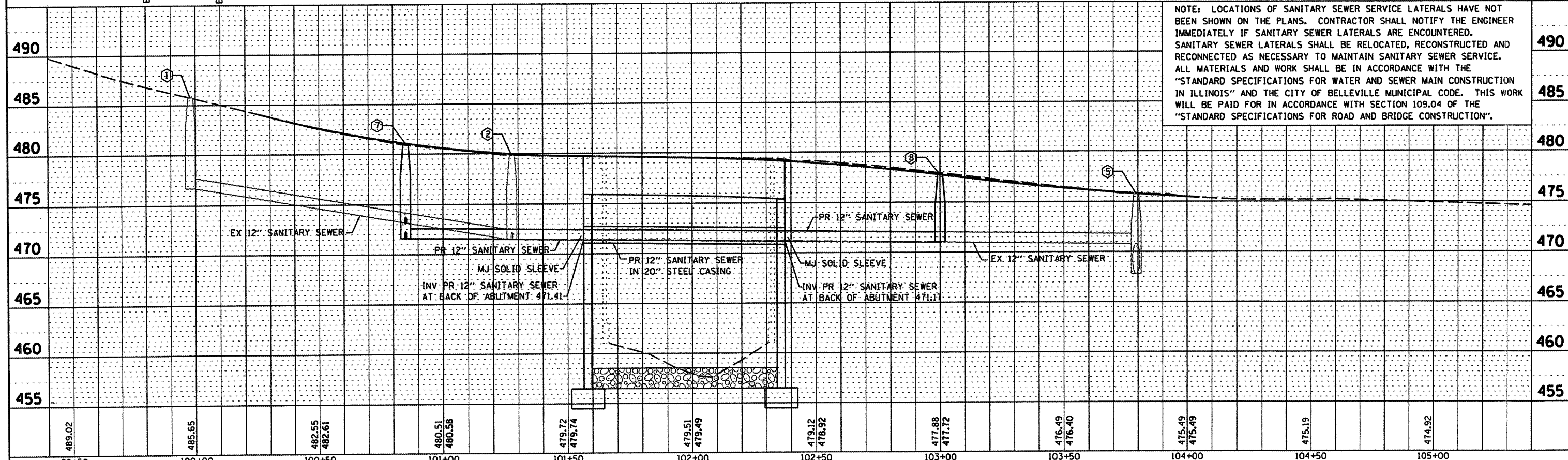
DATE	
BY	
PLAN	
SURVEYED	CHECKED
ALIGNED	CHECKED
RT. OF WAY	CHECKED
NO.	
FILE NAME	

DATE	
BY	
PROFILE	
SURVEYED	CHECKED
PLOTTED	CHECKED
NO.	
FILE NAME	



- ① EX MH STA. 99+97.90 0.98' RT. E INV. 476.71
- ② EX MH TBR STA. 101+27.48 2.54' LT. W INV. 471.48 E INV. 471.48 S INV. 471.48
- ③ EX STRUCTURE STA. 100+48.15 28.31' LT. E INV. 465.3 PR TEMP SE INV. 471.40
- ④ EX MH STA. 101+28.38 54.02' RT. N INV. 473.39
- ⑤ EX MH STA. 103+79.27 3.93' LT. W INV. 470.77 N INV. 467.77
- ⑥ PR MH TA 4' TIFCL STA. 101+28.03 34.71' RT. TOP 480.92 NW INV. 473.30 S INV. 473.31
- ⑦ PR MH TA 4' TIFCL STA. 100+85.00 1.50' LT. SE INV. 473.08 NW INV. 471.6 E INV. 471.6 W INV. 473.22
- ⑧ PR MH TA 4' TIFCL STA. 103+00.00 1.66' LT. W INV. 470.99 E INV. 470.99

NOTE: LOCATIONS OF SANITARY SEWER SERVICE LATERALS HAVE NOT BEEN SHOWN ON THE PLANS. CONTRACTOR SHALL NOTIFY THE ENGINEER IMMEDIATELY IF SANITARY SEWER LATERALS ARE ENCOUNTERED. SANITARY SEWER LATERALS SHALL BE RELOCATED, RECONSTRUCTED AND RECONNECTED AS NECESSARY TO MAINTAIN SANITARY SEWER SERVICE. ALL MATERIALS AND WORK SHALL BE IN ACCORDANCE WITH THE "STANDARD SPECIFICATIONS FOR WATER AND SEWER MAIN CONSTRUCTION IN ILLINOIS" AND THE CITY OF BELLEVILLE MUNICIPAL CODE. THIS WORK WILL BE PAID FOR IN ACCORDANCE WITH SECTION 109.04 OF THE "STANDARD SPECIFICATIONS FOR ROAD AND BRIDGE CONSTRUCTION".



FILE NAME = 27855-sht-SANp1npr.f.dgn	USER NAME = moisiograsor	DESIGNED -	REVISED -	STATE OF ILLINOIS DEPARTMENT OF TRANSPORTATION	SANITARY SEWER PLAN AND PROFILE SHEET			F.A.U. RTE. 9274	SECTION 04-00202-00-BR	COUNTY ST. CLAIR	TOTAL SHEETS 55	SHEET NO. 16
PLOT SCALE = 48.0000 "/>												
PLOT DATE = 3/15/2009	DATE	CHECKED -	REVISED -		SCALE: 1"=20'	SHEET NO. OF SHEETS	STA. 100+25.00 TO STA. 104+05.00	CONTRACT NO. 97369				
FED. ROAD DIST. NO. 7 ILLINOIS FED. AID PROJECT												