

STATE OF ILLINOIS
DEPARTMENT OF TRANSPORTATION

GENERAL NOTES

Fasteners shall be AASHTO M 164 Type 1, mechanically galvanized bolts.
Bolts 3/4 in. ϕ , holes 13/16 in. ϕ , unless otherwise noted.

Calculated weight of Structural Steel: AASHTO M 270 Grade 36 = 14,660 pounds
AASHTO M 270 Grade 50 = 85,230 pounds

No field welding is permitted except as specified in the contract documents.

Reinforcement bars shall conform to the requirements of ASTM A 706
Gr 60. See Special Provisions.

Reinforcement bars designated (E) shall be epoxy coated.

Bearing seat surfaces shall be constructed or adjusted to their designated elevations within a tolerance of 1/8 inch (0.01 ft.). Adjustment shall be made either by grinding the surface or by shimming the bearings.

Concrete Sealer shall be applied to the designated areas of the East Abutment.

The Inorganic Zinc Rich Primer / Acrylic / Acrylic Paint System shall be used for shop and field painting of new structural steel except where otherwise noted. The color of the final finish coat for all interior steel surfaces shall be gray, Munsell No. 5B 7/1. The color of the final finish coat for the exterior and bottom flange of the fascia beams shall be Reddish Brown, Munsell No. 2.5YR 3/4. See Special Provision for "Cleaning and Painting New Metal Structures".

Layout of slope protection system may be varied in the field to suit ground conditions as directed by the Engineer.

The Contractor shall drive test piles in production locations at substructures specified or approved by the Engineer before ordering the remainder of piles. The piles shall be driven to 110% of the nominal required bearing specified or 3 feet into shale, whichever depth is greater.

The steel H-piles shall be according to AASHTO M270 Grade 50.

The concrete for bridge decks finished according to Article 503.16(a) of the Standard Specifications shall be placed and compacted parallel to the skew in uniform increments along centerline of bridge. The machine used for finishing shall be set parallel to the skew for striking off and screeding the concrete.

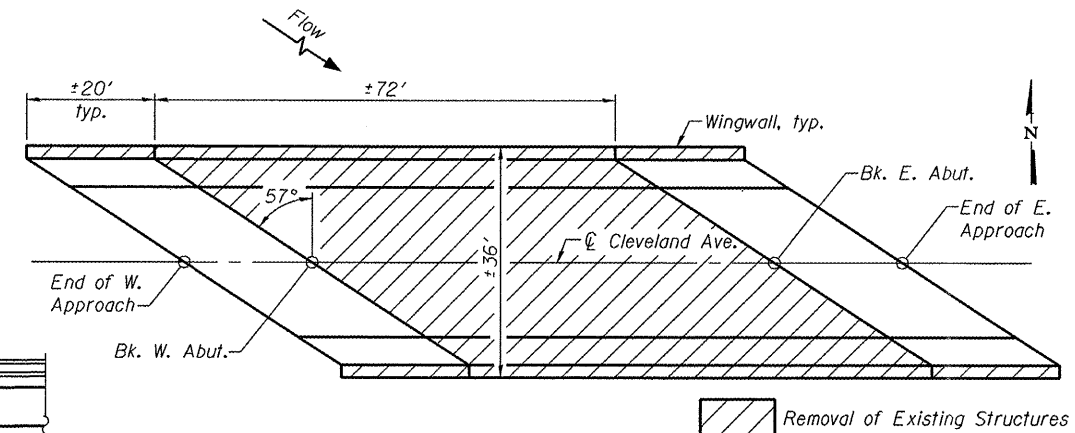
A cantilevered sheet piling design does not appear feasible and additional members or other retention systems may be necessary. The Contractor shall submit a temporary soil retention system design including plan details and calculations for review and acceptance by the Engineer.

TOTAL BILL OF MATERIAL

ITEM	UNIT	SUPER	SUB	TOTAL
Porous Granular Embankment, Special	Cu. Yd.	-	1,210	1,210
Stone Riprap, Class A4	Sq. Yd.	-	1,360	1,360
Filter Fabric	Sq. Yd.	-	1,360	1,360
Removal of Existing Structures	L. Sum	-	-	1
Structure Excavation	Cu. Yd.	-	1,522	1,522
Concrete Structures	Cu. Yd.	-	787.4	787.4
Concrete Superstructure	Cu. Yd.	310.8	-	310.8
Bridge Deck Grooving	Sq. Yd.	357	-	357
Protective Coat	Sq. Yd.	668	-	668
Furnishing and Erecting Structural Steel	L. Sum	1	-	1
Stud Shear Connectors	Each	1,278	-	1,278
Reinforcement Bars, Epoxy Coated	Pound	59,640	71,650	131,290
Bar Splicers	Each	80	-	80
Aluminum Railing, Type L	Foot	145	-	145
Pedestrian Railing	Foot	169	-	169
Furnishing Steel Piles HP14X73	Foot	-	1,272	1,272
Driving Piles	Foot	-	1,272	1,272
Test Pile Steel HP14X73	Each	-	2	2
Pile Shoes	Each	-	78	78
Name Plates	Each	1	-	1
Preformed Joint Strip Seal	Foot	72.5	-	72.5
Elastomeric Bearing Assembly, Type I	Each	6	-	6
Anchor Bolts, 1"	Each	12	-	12
Anchor Bolts, 1 1/4"	Each	12	-	12
Concrete Sealer	Sq. Ft.	-	1,671	1,671
Geocomposite Wall Drain	Sq. Yd.	-	452	452
Mechanical Splice	Each	-	393	393
Drainage Scuppers, DS-11	Each	4	-	4
Temporary Soil Retention System	Sq. Ft.	-	714	714
Underwater Structure Excavation Protection-Location 1	Each	-	1	1
Underwater Structure Excavation Protection-Location 2	Each	-	1	1

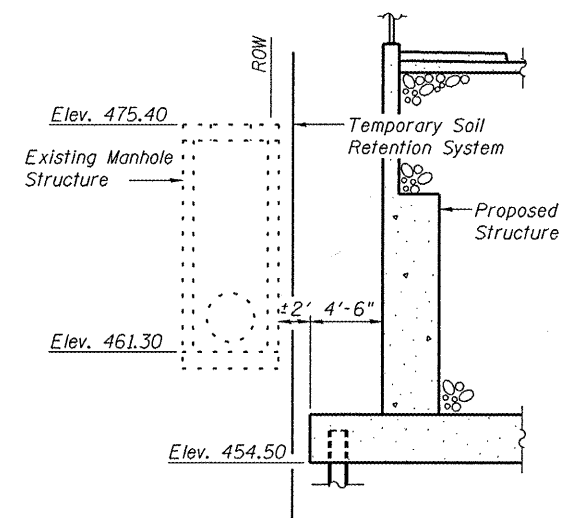
INDEX OF SHEETS

Sheet No.	Description
1	General Plan
2	General Data
3-4	Top of Slab Elevations
5	Top of West Approach Slab Elevations
6	Top of East Approach Slab Elevations
7	Superstructure
8-9	Superstructure Details
10	Diaphragm Details
11-12	Bridge Approach Slab Details
13	Aluminum Railing, Type L
14	Preformed Joint Strip Seal
15	Drainage Scuppers, DS-11
16	Framing Plan
17	Beam & Framing Details
18	Bearing Details
19-20	West Abutment
21-22	East Abutment
23	Abutment Details
24	West Retaining Walls
25	East Retaining Walls
26	Retaining Wall Details
27	HP Pile Details
28	Pedestrian Railing
29	Bar Splicer Assembly Details
30-31	Boring Logs

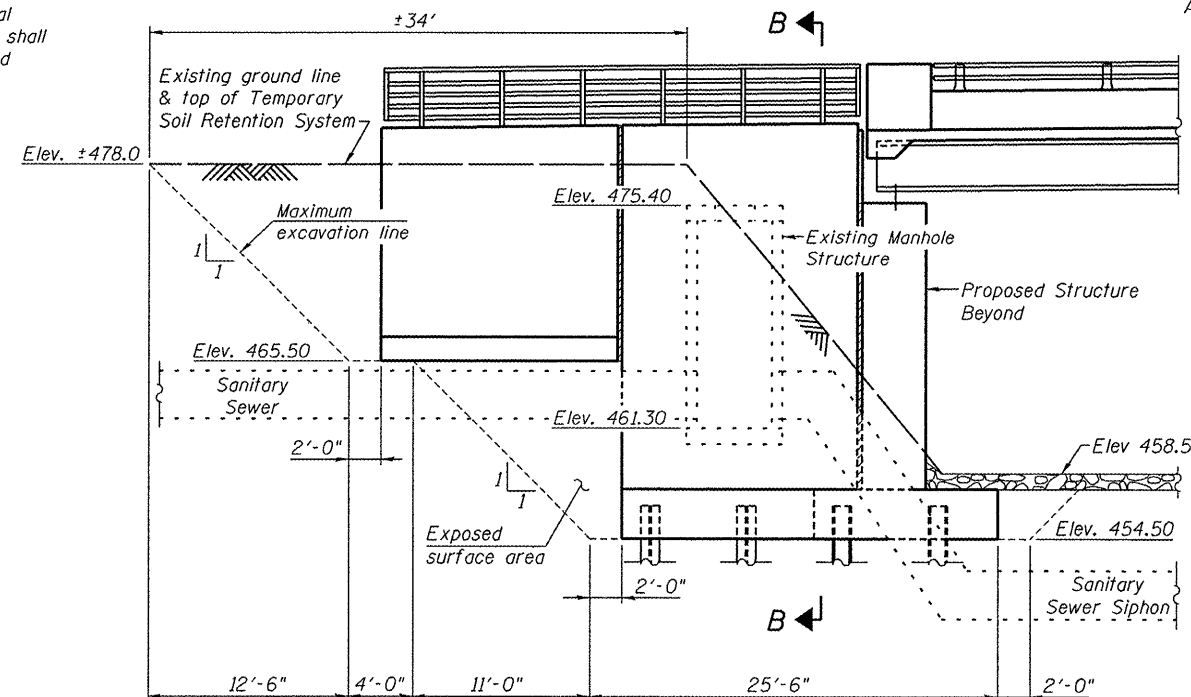


REMOVAL PLAN

Removal includes retaining walls and bridge. See Special Provisions.



SECTION B-B



ELEVATION

NE corner of structure looking south

TEMPORARY SOIL RETENTION SYSTEM

Elevations and piping shown are approximated. System to be used during Removal of Existing Structure as required. Contractor shall field verify actual conditions prior to determination of Temporary Soil Retention System. Cost included with Temporary Soil Retention System.

**GENERAL DATA
STRUCTURE NO. 082-6113**

SHEET NO. 2 31 SHEETS	F.A.U. RTE.	SECTION	COUNTY	TOTAL SHEETS	SHEET NO.
	9274	04-00202-00-BR	ST. CLAIR	55	19
FED. ROAD DIST. NO. 7 ILLINOIS			FED. AID PROJECT		
CONTRACT NO. 97369			DESIGNED DGL		
Eastport Business Center 1 100 Lanter Court, Suite 1 Collinsville, Illinois 62234 618-345-2200			CHECKED JAD		
Design Firm License No. 184.001115			DRAWN JAD		
OATES ASSOCIATES Consulting Engineers			CHECKED DGL		