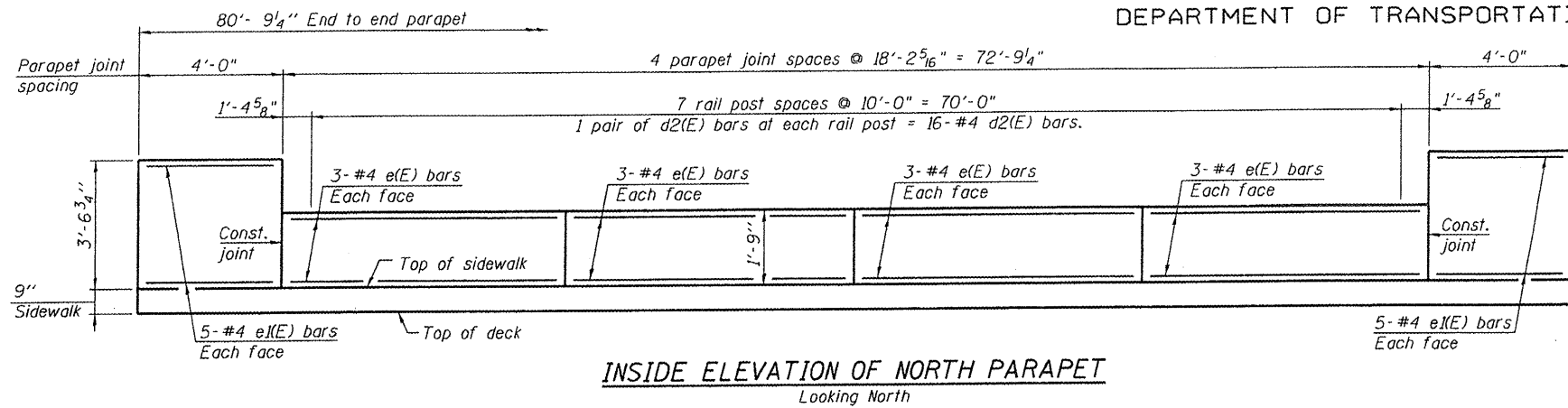
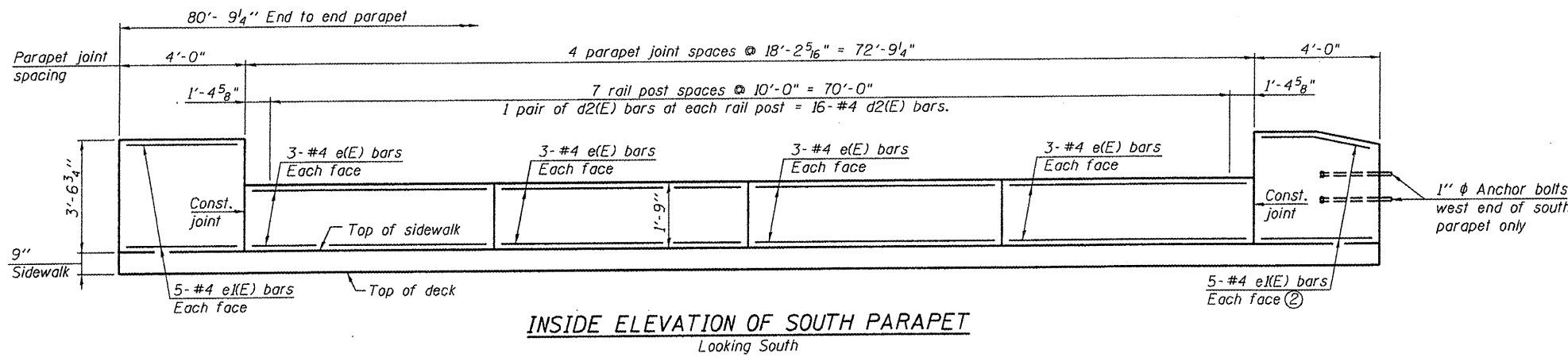


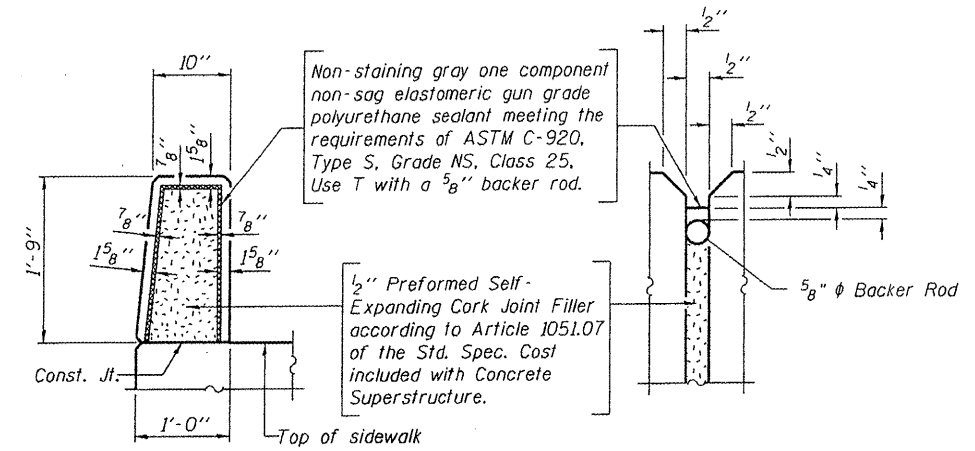
STATE OF ILLINOIS
DEPARTMENT OF TRANSPORTATION



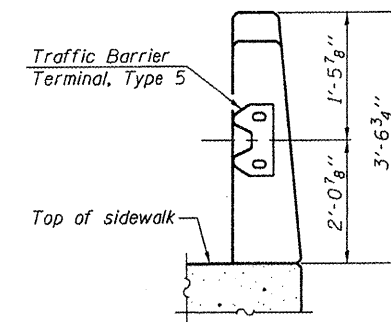
INSIDE ELEVATION OF NORTH PARAPET
Looking North



INSIDE ELEVATION OF SOUTH PARAPET
Looking South



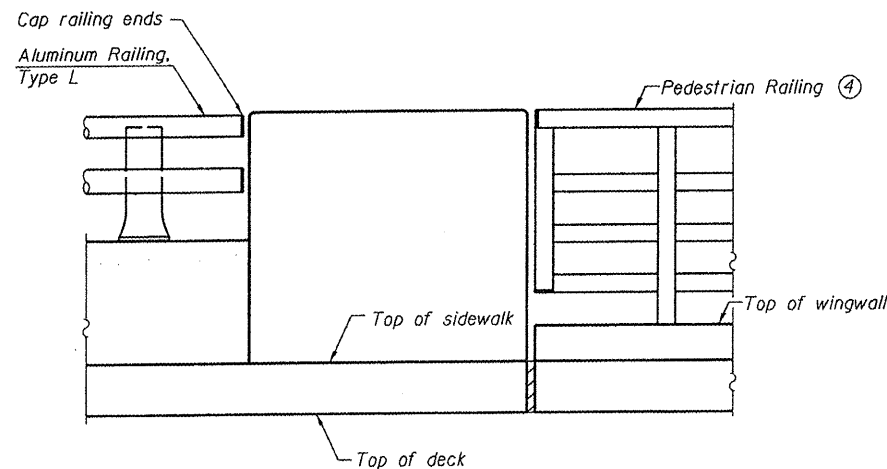
PARAPET JOINT DETAILS



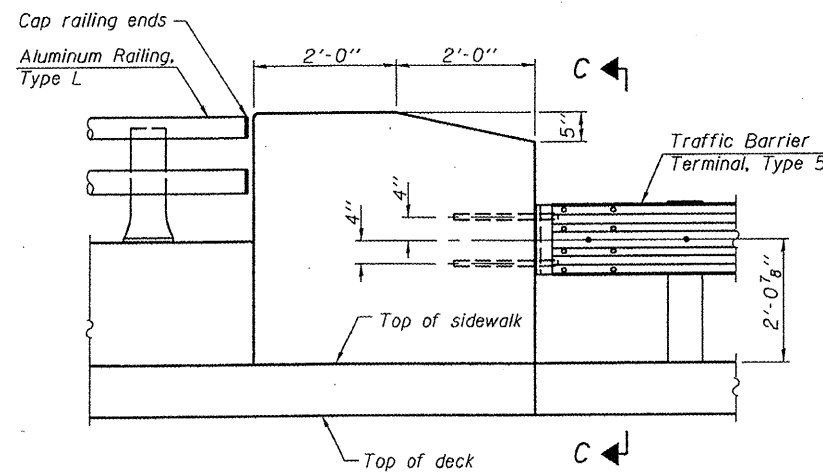
SECTION C-C

- Notes:
- ① All edges of parapets and end posts shall have standard $\frac{3}{4}$ " chamfer.
 - ② Bend in field as required.
 - ③ For bar detail, Bill of Material, Bar List, Section Thru Sidewalk & Parapet, and Section Thru Sidewalk & End Post, see sheet 9 of 31.
 - ④ For Pedestrian Railing details, see sheet 28 of 31.


SUPERSTRUCTURE DETAILS
STRUCTURE NO. 082-6113



PARAPET END ELEVATION
North Parapet and East end of South Parapet



PARAPET END ELEVATION
West end of South Parapet

SHEET NO. 8 31 SHEETS	F.A.U. RTE. 9274	SECTION 04-00202-00-BR	COUNTY ST. CLAIR	TOTAL SHEETS 55	SHEET NO. 25
	CONTRACT NO. 97369				
FED. ROAD DIST. NO. 7 ILLINOIS FED. AID PROJECT					
 DATES ASSOCIATES Consulting Engineers	Eastport Business Center 1 100 Lanter Court, Suite 1 Collinsville, Illinois 62234 618-345-2200 Design Firm License No. 184.001115			DESIGNED NEL CHECKED JAD DRAWN NEL CHECKED JAD	