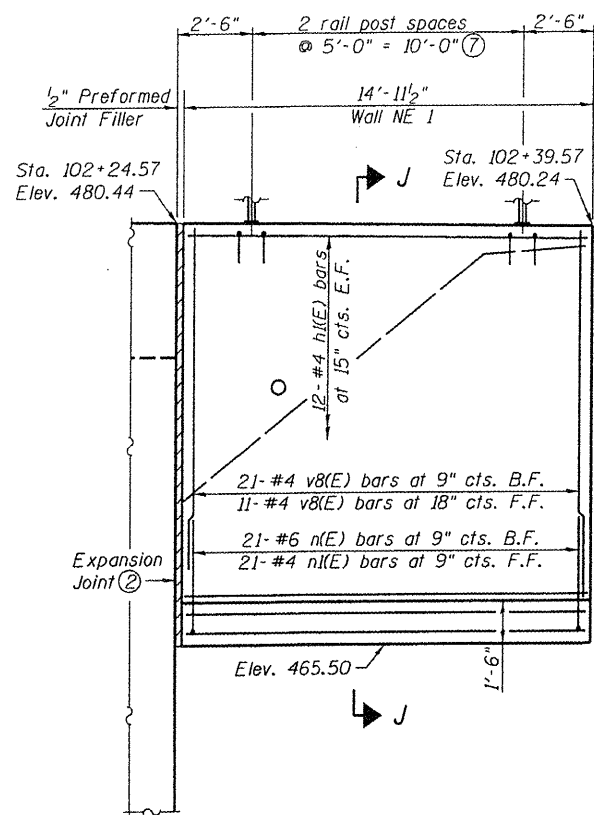
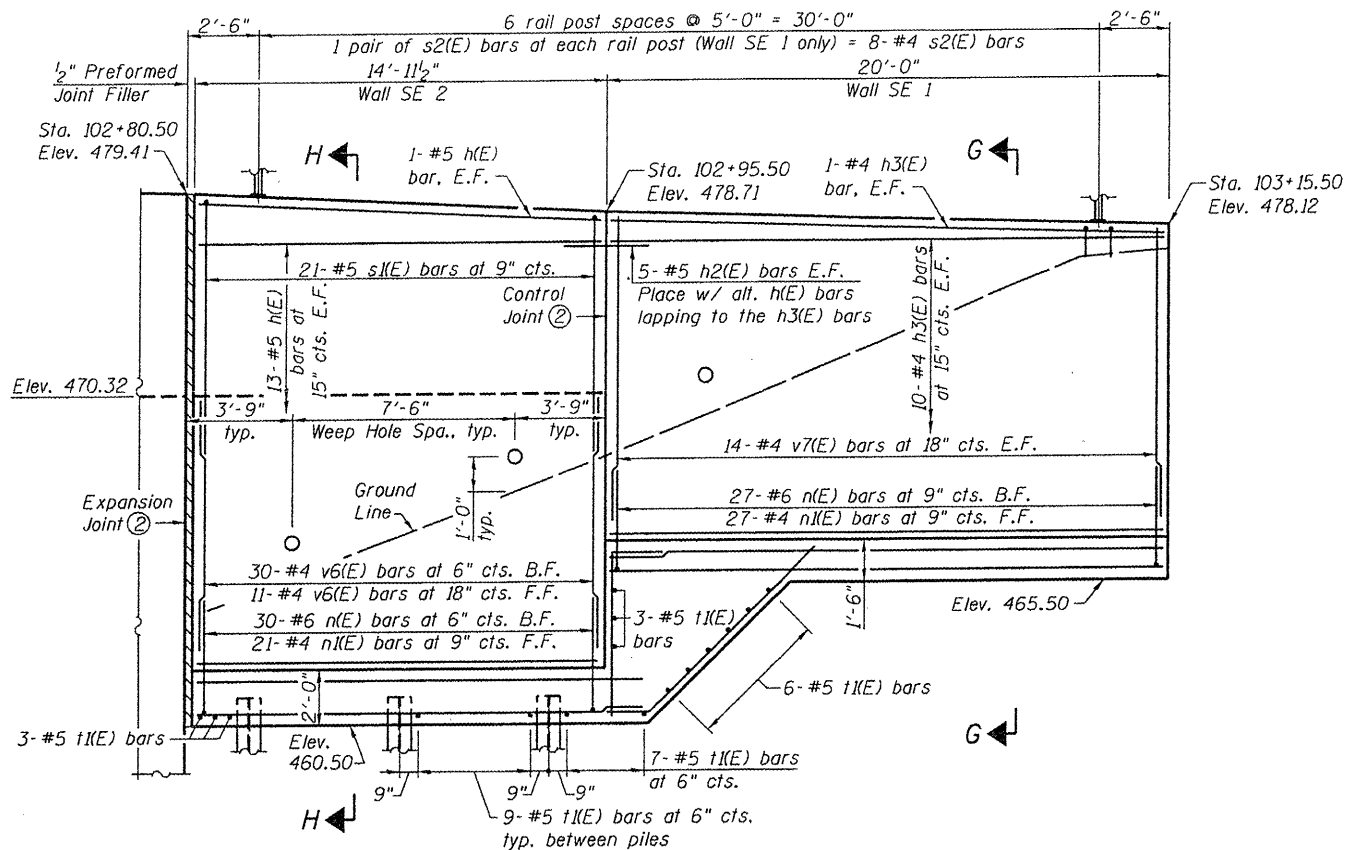


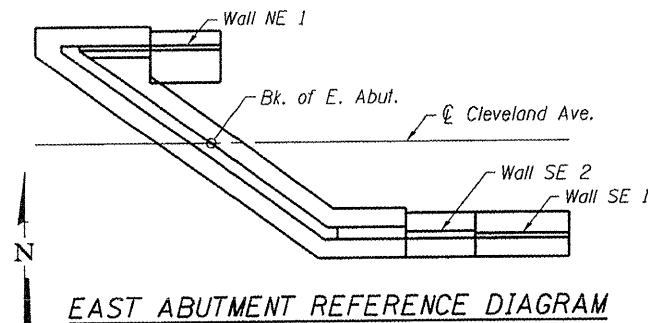
STATE OF ILLINOIS  
DEPARTMENT OF TRANSPORTATION



**NORTHEAST RETAINING WALL  
ELEVATION**  
(Looking North)



**SOUTHEAST RETAINING WALL  
ELEVATION**  
(Looking North)



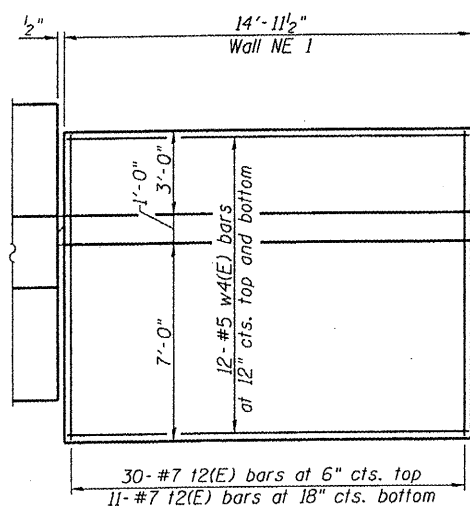
**EAST ABUTMENT REFERENCE DIAGRAM**

**PILE DATA**

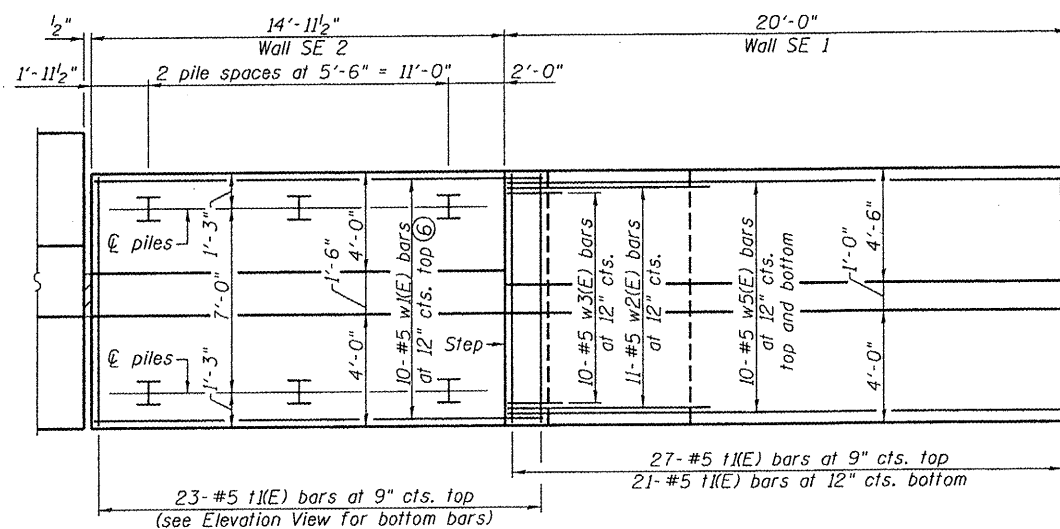
Type: HP14x73 with Pile Shoes  
Nominal Required Bearing: 578 Kip  
Allowable Resistance Available: 192 Kip  
Est. Length: 23' (Embed 3 feet into shale  
as directed by the Engineer)  
No. Production Piles: 6

**Notes:**

- ① For Bar List, Bill of Materials, Stepped Footing, Section G-G, Section H-H, Section J-J, and reinforcement details, see sheet 26 of 31.
- ② For Expansion Joint and Control Joint, see sheet 23 of 31.
- ③ All edges shall have 3/4" chamfer unless noted otherwise.
- ④ B.F. denotes back face.  
F.F. denotes front face.  
E.F. denotes each face.
- ⑤ The retaining walls bearing on soil shall have a Maximum Applied Bearing Pressure = 1.5 ksf.
- ⑥ For w(E) bars in bottom of SE 2 wall footing, see Section H-H.
- ⑦ 1 pair of s2(E) bars at each rail post = 6-#4 s2(E) bars

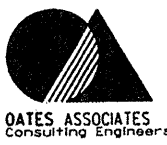


**NORTHEAST RETAINING WALL  
FOOTING PLAN**



**SOUTHEAST RETAINING WALL  
FOOTING PLAN**

**EAST RETAINING WALLS  
STRUCTURE NO. 082-6113**

SHEET NO. 25	F.A.U. RTE.	SECTION	COUNTY	TOTAL SHEETS	SHEET NO.
	9274	04-00202-00-BR	ST. CLAIR	55	42
31 SHEETS	CONTRACT NO. 97369				
FED. ROAD DIST. NO. 7 ILLINOIS FED. AID PROJECT					
 GATES ASSOCIATES Consulting Engineers			Eastport Business Center 1 100 Lanter Court, Suite 1 Collinsville, Illinois 62234 618-345-2200 Design Firm License No. 184.001115		DESIGNED DGL CHECKED JAD DRAWN JAD CHECKED DGL