

BM - Double nail in Power Pole
24' Rt. Station 14+47
Elev. 460.00

PI STA = 12+00
 $\Delta = 0^{\circ}08'30'' R$

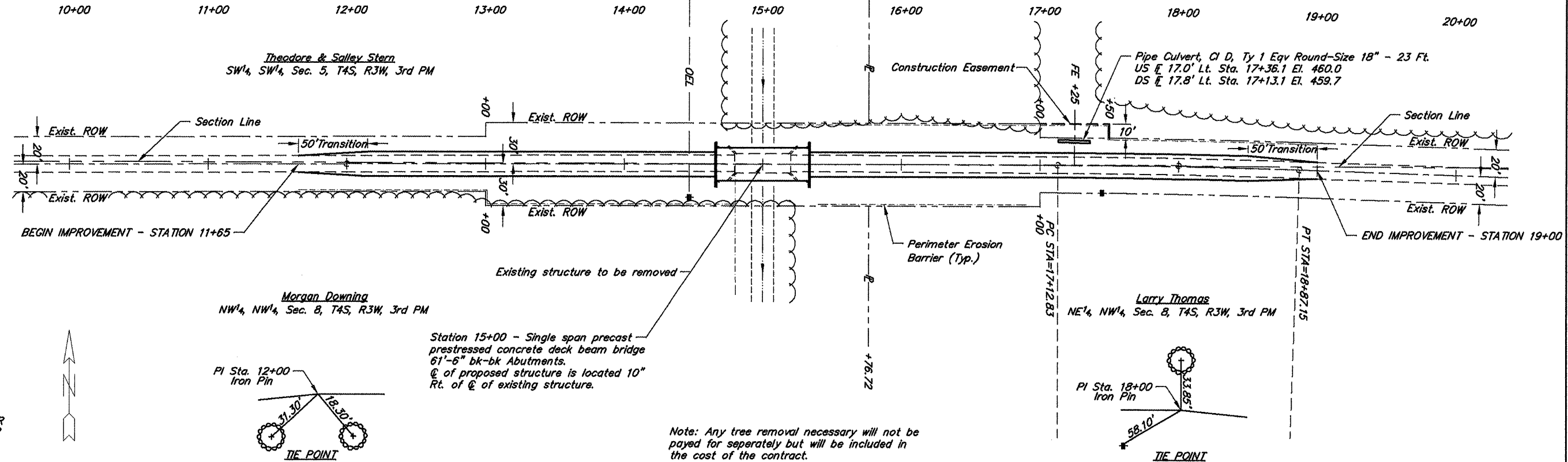
Perimeter Erosion Barrier
Sta. 11+65 - Sta 14+80 Lt. 325 Ft.
Sta 15+20 - Sta 19+00 Rt. 375 Ft.
Sta 15+40 - Sta 16+90 Rt. 150 Ft.
Total 850 Ft.

CURVE DATA

PI Sta = 18+00
 $\Delta = 1^{\circ}53'30'' R T = 87.17'$
 $D = 1^{\circ}05'07'' L = 174.32'$
 $R = 5280.00' E = 0.72'$
Normal Crown

ROUTE	SECTION	COUNTY	TOTAL SHEETS	SHEET NO.
TR 21	00-07118-00-BR	PERRY	11	2
PROJECT NO. BROS-145(35)			CONTRACT NO. 99349	

Existing Structure - Single span concrete deck on steel stringers with closed concrete abutments. 14.1'W x 40.5'L



SCALES:
1" = 80' HOR
1" = 10' VER

Note: Any tree removal necessary will not be paid for separately but will be included in the cost of the contract.

