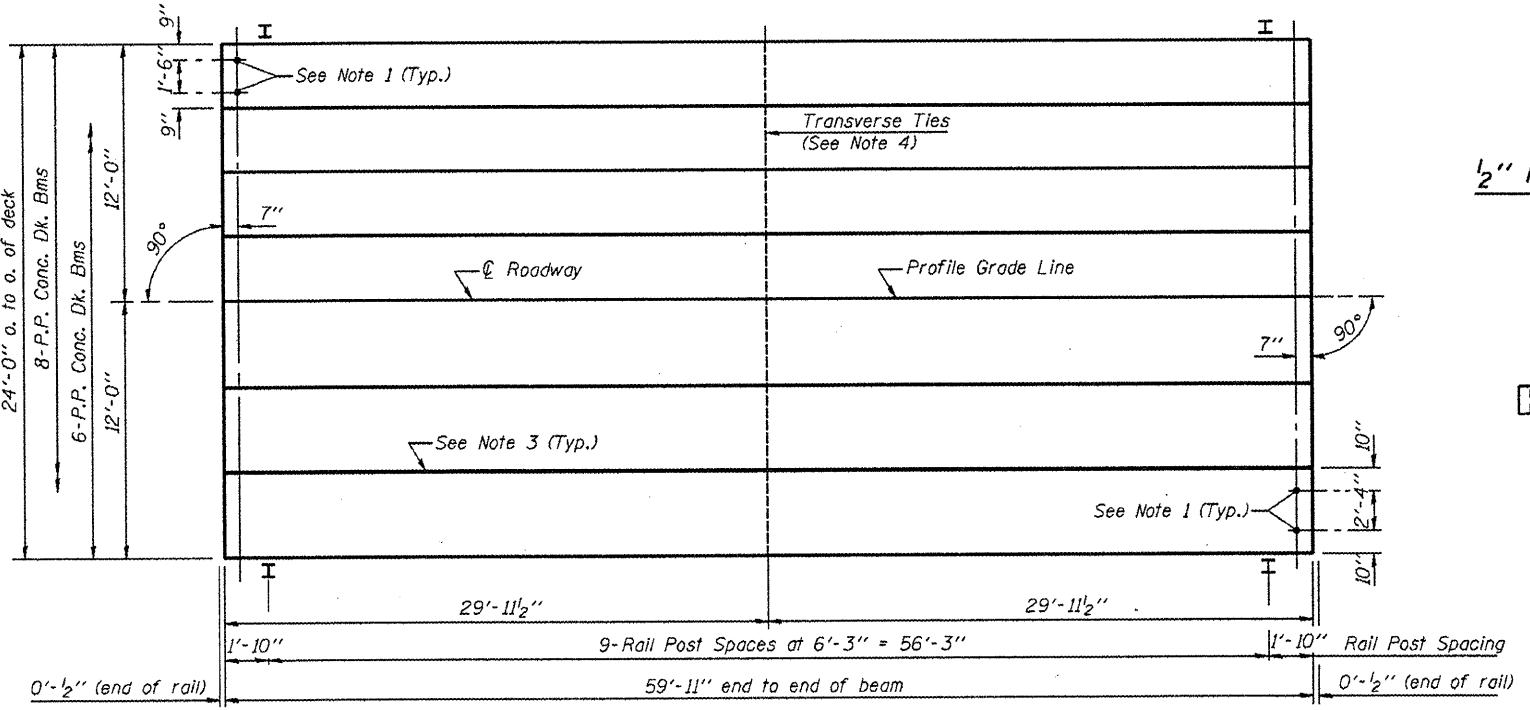
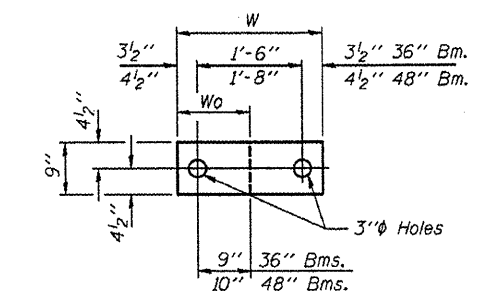
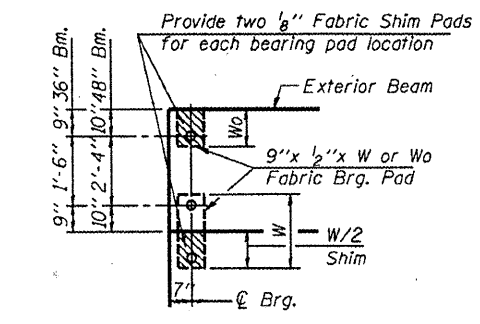


TYPICAL ELEVATIONS

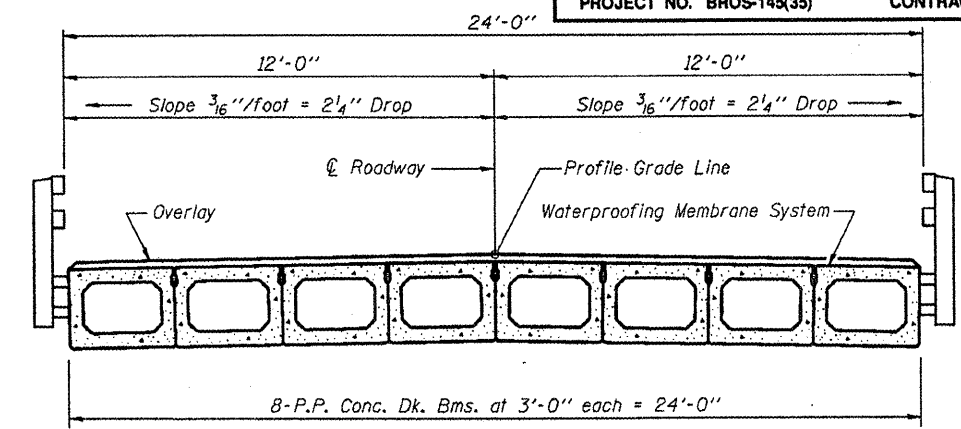


PLAN

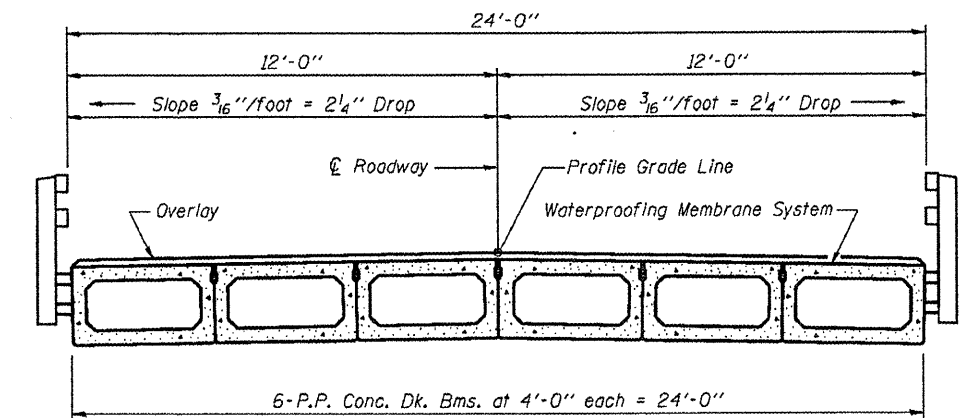


Beam	W	Wo
36"	2'-1"	1'-0 1/2"
48"	2'-5"	1'-2 1/2"

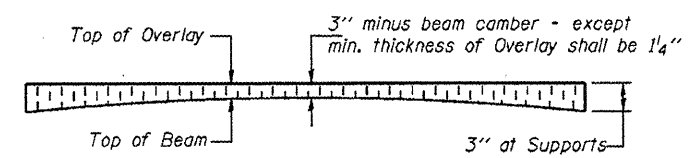
1/2" FABRIC BRG. PAD DETAILS



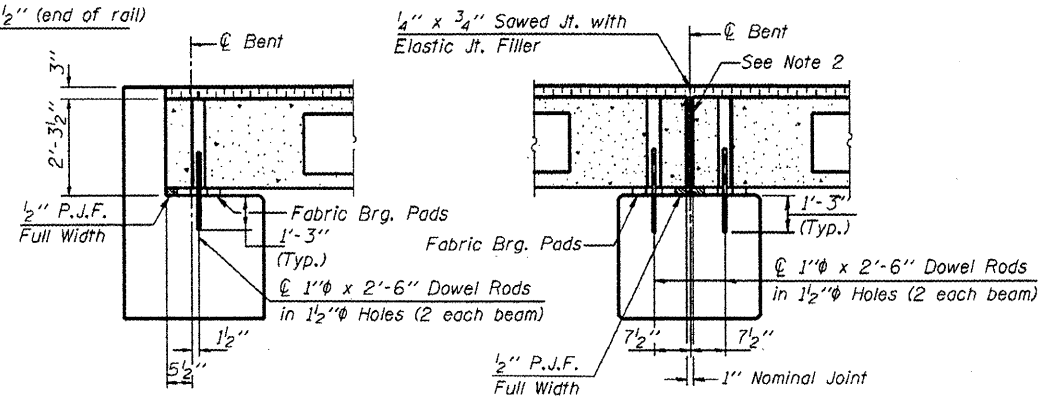
CROSS SECTION



CROSS SECTION



PROFILE OF OVERLAY



SECTION AT ABUTS.  
(Along centerline of Beams)

SECTION AT PIERS  
(Along centerline of Beams)

- NOTES**
- After beams have been erected, holes shall be drilled into substructure and anchor dowels placed. Dowel holes shall be filled with non-shrink grout to top of beam and allowed to cure min. 24 hrs. prior to grouting the shear keys.
  - Nominal 1" joint at centerline of Pier shall be filled with non-shrink grout.
  - Longitudinal keys shall be grouted.
  - The 1" rods in the transverse tie assembly shall be tightened to a snug fit and the threads set. Pockets that receive transverse tie bar outside shall be filled with grout after transverse tie assembly is in place.

**QUANTITIES FOR ONE SPAN**

P.P. Conc. Dk. Bm. 27" Dp.	1438 Sq. Ft.
Steel Railing	120 Ft.

P.P.C. DECK BEAM SUPERSTRUCTURE			
24' RDWY.	27" BMS.	60' SPAN	0° SKEW