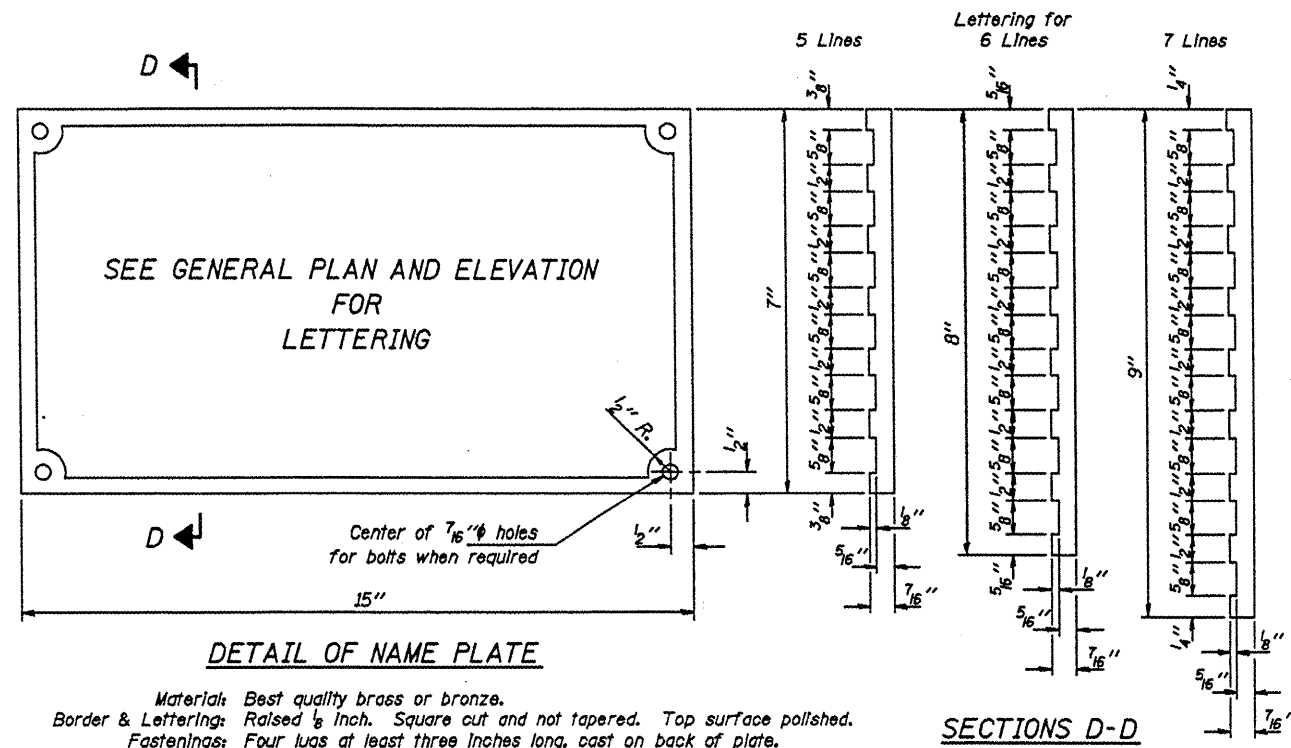
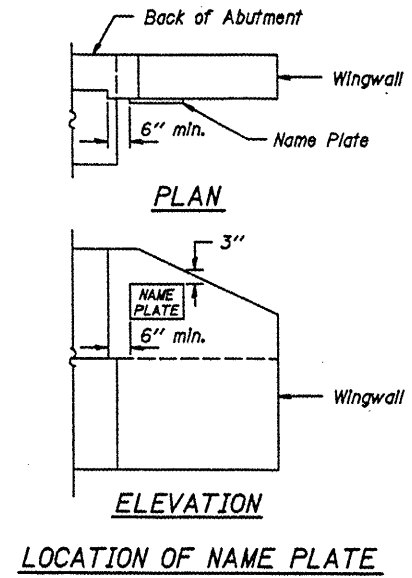


ROUTE	SECTION	COUNTY	TOTAL SHEETS	SHEET NO.
TR 21	00-07118-00-BR	PERRY	11	9
PROJECT NO. BROS-145(35)			CONTRACT NO. 99349	



Material: Best quality brass or bronze.
 Border & Lettering: Raised $\frac{1}{8}$ inch. Square cut and not tapered. Top surface polished.
 Fastenings: Four lugs at least three inches long, cast on back of plate.



Illinois Department of Transportation

PASSED APRIL 4, 2005
 Thomas S. Remondino
 Engineer of Bridge Design

APPROVED APRIL 4, 2005
 Ralph E. Anderson
 Engineer of Bridges and Structures

DESIGNER

NAME PLATE
 STANDARD CN