

STATE OF ILLINOIS
DEPARTMENT OF TRANSPORTATION
DIVISION OF HIGHWAYS

**PROPOSED
HIGHWAY PLANS**

HSB RTE 393: CHINATOWN FEEDER
UNDER I-90 /94 (DAN RYAN EXPRESSWAY)
SECTION 2014-0911
MISCELLANEOUS, INSPECTION ACCESS
COOK COUNTY
C-91-201-15

H.S.B. RTE.	SECTION	COUNTY	TOTAL SHEETS	SHEET NO.
393	2014-0911	COOK	21	1
ILLINOIS		CONTRACT NO. 62A48		

D-91-201-15



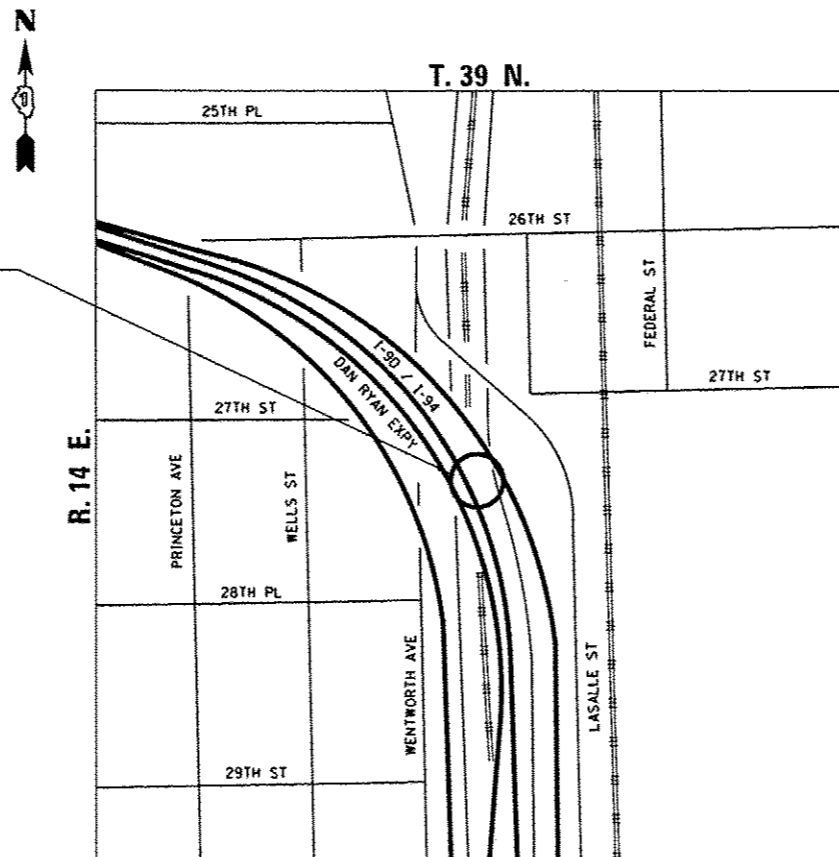
FOR INDEX OF SHEETS, SEE SHEET NO. 2

PROJECT LOCATED IN THE CITY OF CHICAGO

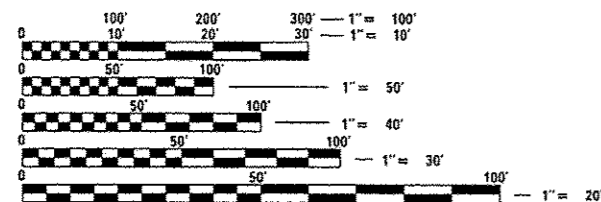
TRAFFIC DATA

POSTED SPEED: 45 MPH
FUNCTIONAL CLASSIFICATION:
INTERSTATE
ADT = 24,800 (2002)

PROJECT LOCATION



LOCATION MAP
NOT TO SCALE



FULL SIZE PLANS HAVE BEEN PREPARED USING STANDARD ENGINEERING SCALES. REDUCED SIZED PLANS WILL NOT CONFORM TO STANDARD SCALES. IN MAKING MEASUREMENTS ON REDUCED PLANS, THE ABOVE SCALES MAY BE USED.

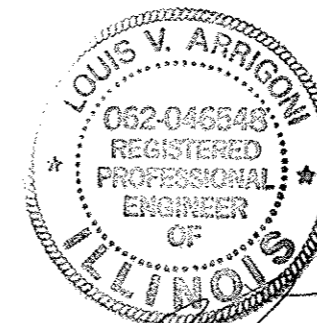
DIGGER
CHICAGO UTILITY ALERT NETWORK
1-312-744-7000

PROJECT MANAGER: ISSAM RAYYAN, P.E. (847) 705-4178

PROJECT ENGINEER: ROBERT T. BORO, P.E. (847) 705-4237

CONTRACT NO. 62A48

GROSS LENGTH = 450 FT. = 0.085 MILE
NET LENGTH = 450 FT. = 0.085 MILE



LOUIS V. ARRIGONI
LICENSED PROFESSIONAL ENGINEER
ILLINOIS NO. 062-046848 EXPIRES 11-30-18
SHEETS 1-7, 17-18



EHAB ELQAD
LICENSED PROFESSIONAL ENGINEER
ILLINOIS NO. 062-058301 EXPIRES 11-30-15
SHEETS 8-10



STATE OF ILLINOIS
DEPARTMENT OF TRANSPORTATION
DIVISION OF HIGHWAYS

SUBMITTED *March 31, 2015*

John F. ...
DEPUTY DIRECTOR OF HIGHWAYS, REGION ENGINEER

May 8, 2015
Dan D. ...
ENGINEER OF DESIGN AND ENVIRONMENT

May 8, 2015
Onor Osman, P.E.
DIRECTOR OF HIGHWAYS, CHIEF ENGINEER

PRINTED BY THE AUTHORITY
OF THE STATE OF ILLINOIS

INDEX OF SHEETS

SHEET NO.	DESCRIPTION
1	COVER SHEET
2	INDEX OF SHEETS, STATE STANDARDS AND GENERAL NOTES
3 - 5	SUMMARY OF QUANTITIES
6	TYPICAL SECTIONS
7	SCHEDULE OF QUANTITIES
8	PLAN SHEET
9	EXISTING LIGHTING DEMOLITION PLAN
10	PROPOSED LIGHTING RELOCATION PLAN & WIRING DIAGRAM
11	TEMPORARY LIGHTING SYSTEM PLAN
12	MISC. ELECTRICAL DETAILS, SHEET A (BE-702)
13	MISC. ELECTRICAL DETAILS, SHEET B (BE-703)
14	TEMPORARY LIGHT POLE DETAILS (BE-800)
15	ENTRANCE AND EXIT RAMP CLOSURE DETAILS (TC-08)
16	TRAFFIC CONTROL DETAILS FOR FREEWAY SINGLE & MULTI-LANE WEAVE (TC-09)
17	TRAFFIC CONTROL DETAILS FOR FREEWAY SHOULDER CLOSURES AND PARTIAL RAMP CLOSURES (TC-17)
18	FREEWAY / EXPRESSWAY SIGNING FOR FLAGGING OPERATIONS AT WORK ZONE OPENINGS ON FREEWAYS / EXPRESSWAYS (TC-18)
19	TRAFFIC CONTROL DETAILS FOR FREEWAY CENTER LANE CLOSURE SHOULDER LANE (TC-25)
20 - 21	CROSS SECTIONS


GENERAL NOTES

- BEFORE STARTING ANY EXCAVATION, THE CONTRACTOR SHALL CALL "DIGGER" AT (312) 744-7000 FOR FIELD LOCATIONS OF BURIED ELECTRIC, TELEPHONE AND GAS FACILITIES. 48-HOUR MINIMUM NOTIFICATION IS REQUIRED.
- THE CONTRACTOR WILL NOT BE ALLOWED TO SET UP A YARD OR FIELD OFFICE ON STATE PROPERTY WITHOUT WRITTEN PERMISSION FROM THE DEPARTMENT.
- ANY DAMAGE TO EXISTING PAVEMENT MARKINGS OR RAISED REFLECTIVE PAVEMENT MARKERS SHALL BE REPLACED AT THE CONTRACTOR'S EXPENSE.
- IT SHALL BE THE CONTRACTOR'S RESPONSIBILITY TO VERIFY ALL DIMENSIONS AND CONDITIONS IN THE FIELD PRIOR TO CONSTRUCTION AND ORDERING OF MATERIALS.
- DO NOT SCALE PLANS FOR CONSTRUCTION DIMENSIONS.
- THE CONTRACTOR SHALL CONTACT THE DISTRICT ONE TRAFFIC CONTROL SUPERVISOR FOR EXPRESSWAYS AT (847) 705-4155 A MINIMUM OF 72 HOURS IN ADVANCE OF BEGINNING OF WORK.
- ALL EXCAVATED SOILS FROM THE PROJECT SITE SHALL BE RE-USED AS FILL OR TOPSOIL AT THE PROJECT SITE. NO EXCAVATED SOILS FROM THE PROJECT SITE MAY BE DISPOSED OF AT ANY OFFSITE LOCATION.
- THE CONTRACTOR SHALL COORDINATE CONSTRUCTION ACTIVITIES WITH UTILITY COMPANIES AND THE CITY OF CHICAGO.
- ANY LOOSE MATERIAL DEPOSITED IN THE FLOW LINE OF DITCHES, GUTTERS OR OTHER DRAINAGE STRUCTURES SHALL BE REMOVED BY THE END OF EACH DAY BY THE CONTRACTOR AT THEIR EXPENSE.

STATE STANDARDS

000001-06	STANDARD SYMBOLS, ABBREVIATIONS AND PATTERNS
001001-02	AREAS OF REINFORCEMENT BARS
280001-07	TEMPORARY EROSION CONTROL SYSTEMS
482001-02	HMA SHOULDER ADJACENT TO FLEXIBLE PAVEMENT
635011-02	REFLECTOR MARKER AND MOUNTING DETAILS
637006-03	CONCRETE BARRIER, DOUBLE FACE, 42 IN. HEIGHT
701101-04	OFF ROAD OPERATIONS, MULTILANE, 15' TO 24" FROM PAVEMENT EDGE
701106-02	OFF ROAD OPERATIONS, MULTILANE, MORE THAN 15' AWAY
701400-08	APPROACH TO LANE CLOSURE, FREEWAY / EXPRESSWAY
701401-09	LANE CLOSURE, FREEWAY / EXPRESSWAY
701406-09	LANE CLOSURE, FREEWAY / EXPRESSWAY, DAY OPERATIONS ONLY
701411-09	LANE CLOSURE, MULTILANE, AT ENTRANCE OR EXIT RAMP, FOR SPEEDS >= 45 MPH
701428	TRAFFIC CONTROL SETUP AND REMOVAL - FREEWAY / EXPRESSWAY
701446-06	TWO LANE CLOSURE - FREEWAY / EXPRESSWAY
701901-04	TRAFFIC CONTROL DEVICES
704001-07	TEMPORARY CONCRETE BARRIER
821101-01	LUMINAIRE WIRING DIAGRAM
836011-01	LIGHT POLE FOUNDATION WITH 42 IN. CONCRETE MEDIAN BARRIER

M:\CHINATOWN FEEDER (12-154-007)\Design\Civil\62248-Sheets\0162248-INT-INDEX.dgn

	USER NAME = KJc	DESIGNED - KJC	REVISED -	STATE OF ILLINOIS DEPARTMENT OF TRANSPORTATION	HSB RTE 393: CHINATOWN FEEDER UNDER I-90 / 94 INDEX OF SHEETS, STATE STANDARDS AND GENERAL NOTES	H.S.B. RTE.	SECTION	COUNTY	TOTAL SHEETS	SHEET NO.
	PLOT SCALE = NTS	CHECKED - LVA	REVISED -			393	2014-0911	COOK	21	2
	PLOT DATE = 4/7/2015	DATE - 04/07/2015	REVISED -			CONTRACT NO. 62A48		ILLINOIS FED. AID PROJECT		
				SCALE: NTS		SHEET 1 OF 1 SHEETS		STA. TO STA.		

SI	CODE NO.	ITEM	UNIT	TOTAL QUANTITY	100% STATE
					ROADWAY 0005
	20200100	EARTH EXCAVATION	CU YD	139	139
	20201200	REMOVAL AND DISPOSAL OF UNSUITABLE MATERIAL	CU YD	14	14
	28000510	INLET FILTERS	EACH	5	5
	40200400	AGGREGATE SURFACE COURSE, TYPE B	CU YD	270	270
	40600275	BITUMINOUS MATERIALS (PRIME COAT)	POUND	65	65
	42001300	PROTECTIVE COAT	SQ YD	120	120
	44001980	CONCRETE BARRIER REMOVAL	FOOT	120	120
	48203021	HOT-MIX ASPHALT SHOULDERS, 6"	SQ YD	95	95
	60255500	MANHOLES TO BE ADJUSTED	EACH	1	1
	63700175	CONCRETE BARRIER, SINGLE FACE, 42 INCH HEIGHT	FOOT	123.5	123.5
	67100100	MOBILIZATION	L SUM	1	1
	70200100	NIGHTTIME WORK ZONE LIGHTING	L SUM	1	1
	70300240	TEMPORARY PAVEMENT MARKING - LINE 6"	FOOT	137.5	137.5
	70301000	WORK ZONE PAVEMENT MARKING REMOVAL	SO FT	69	69

URBAN

X SPECIALTY ITEM

H:\CHINATOWN FEEDER 02-154-0871\Design\CAD\IN\600 Sheets\0162448-INT-500.dgn
500 1



USER NAME * KylaC	DESIGNED - KJC	REVISED -
PLOT SCALE * NTS	DRAWN - KJC	REVISED -
PLOT DATE * 4/7/2015	CHECKED - LVA	REVISED -
	DATE - 04/07/2015	REVISED -

STATE OF ILLINOIS
DEPARTMENT OF TRANSPORTATION

HSB RTE 393: CHINATOWN FEEDER UNDER I-90 /94
SUMMARY OF QUANTITIES

H.S.B. RTE.	SECTION	COUNTY	TOTAL SHEETS	SHEET NO.
393	2014-0911	COOK	21	3
ILLINOIS FED. AID PROJECT				CONTRACT NO. 62A48


SCALE: NTS SHEET 1 OF 3 SHEETS STA. TO STA.

URBAN

SI	CODE NO.	ITEM	UNIT	TOTAL QUANTITY	100% STATE
					ROADWAY 0005
	70400100	TEMPORARY CONCRETE BARRIER	FOOT	137.5	137.5
	70600251	IMPACT ATTENUATORS, TEMPORARY (NON- REDIRECTIVE, NARROW), TEST LEVEL 3	EACH	1	1
	78200530	BARRIER WALL MARKERS, TYPE C	EACH	4	4
*	80300100	LOCATING UNDERGROUND CABLE	FOOT	50	50
*	81025300	CONDUIT ENCASED, REINFORCED CONCRETE, 2" DIA., PVC 2 WIDE X 1 HIGH	FOOT	5	5
*	81025600	CONDUIT ENCASED, REINFORCED CONCRETE, 4" DIA., PVC 2 WIDE X 1 HIGH	FOOT	5	5
*	81028200	UNDERGROUND CONDUIT, GALVANIZED STEEL, 2" DIA.	FOOT	20	20
*	81028240	UNDERGROUND CONDUIT, GALVANIZED STEEL, 4" DIA.	FOOT	15	15
*	81200230	CONDUIT EMBEDDED IN STRUCTURE, 2" DIA., PVC	FOOT	110	110
*	81702400	ELECTRIC CABLE IN CONDUIT, 600V (XLP-TYPE USE) 3-1/C NO. 2	FOOT	229	229
	K0029632	WEED CONTROL, NON-SELECTIVE AND NON-RESIDUAL	GALLON	0.5	0.5
	K0029634	WEED CONTROL, PRE-EMERGENT GRANULAR HERBICIDE	POUND	25	25
	X0326169	GRADING EXISTING INFIELD	SQ YD	2175	2175
	X7011015	TRAFFIC CONTROL AND PROTECTION (EXPRESSWAYS)	L SUM	1	1

* SPECIALTY ITEM

P:\CHINATOWN FEEDER 12-151-001\Design\GIS\CAD\Drawings\02\02A48-411-500.dgn

	USER NAME = KyleC	DESIGNED - KJC	REVISED -	STATE OF ILLINOIS DEPARTMENT OF TRANSPORTATION	HSB RTE 393: CHINATOWN FEEDER UNDER I-90 /94 SUMMARY OF QUANTITIES	H.S.B. RTE.	SECTION	COUNTY	TOTAL SHEETS	SHEET NO.
	PLOT SCALE = NTS	CHECKED - LVA	REVISED -			393	2014-0911	COOK	21	4
	PLOT DATE = 4/7/2015	DATE - 04/07/2015	REVISED -			CONTRACT NO. 62A48		ILLINOIS FED. AID PROJECT		

SCALE: NTS SHEET 2 OF 3 SHEETS STA. TO STA.

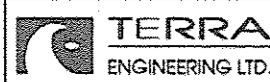
URBAN

100% STATE
ROADWAY
0005

SI	CODE NO.	ITEM	UNIT	TOTAL QUANTITY	
	X7040125	PINNING TEMPORARY CONCRETE BARRIER	EACH	27	27
X	X8100863	INTERCEPT EXISTING CONDUIT	EACH	3	3
X	X8131168	JUNCTION BOX, NON-METALLIC, EMBEDDED IN STRUCTURE, 21" X 11" X 08"	EACH	3	3
X	X8410102	TEMPORARY LIGHTING SYSTEM	L SUM	1	1
X	X8410103	REMOVE TEMPORARY LIGHTING SYSTEM	L SUM	1	1
	Z0015500	DEBRIS REMOVAL	L SUM	1	1
	Z0018500	DRAINAGE STRUCTURES TO BE CLEANED	EACH	5	5
X	Z0033028	MAINTENANCE OF LIGHTING SYSTEM	CAL MO	1	1
	Z0013798	CONSTRUCTION LAYOUT	L SUM	1	1
	44004250	PAVED SHOULDER REMOVAL	SQ YD	28	28

* SPECIALTY ITEM

M:\CHINATOWN FEEDER 02-154-0671\Design\Civil\000 Sheets\062448-101-500.dgn



USER NAME : KyleC	DESIGNED - KJC	REVISED -
PLOT SCALE : NTS	DRAWN - KJC	REVISED -
PLOT DATE : 4/7/2015	CHECKED - LVA	REVISED -
	DATE - 04/07/2015	REVISED -

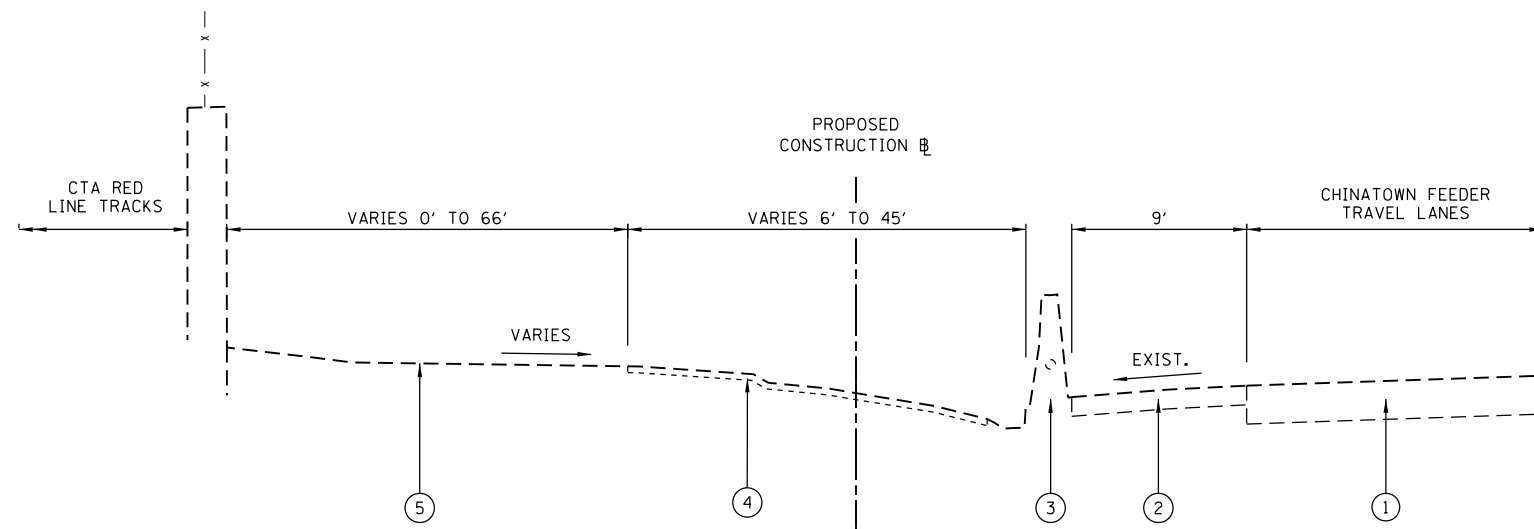
STATE OF ILLINOIS
DEPARTMENT OF TRANSPORTATION

HSB RTE 393: CHINATOWN FEEDER UNDER I-90 /94
SUMMARY OF QUANTITIES

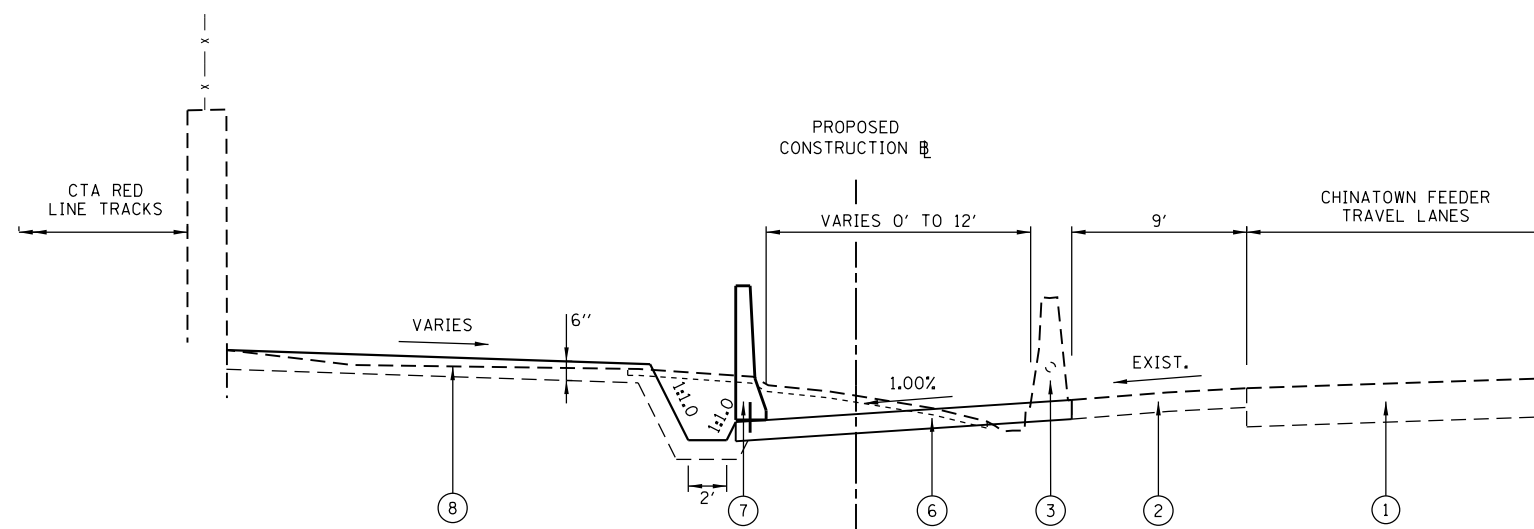
SCALE: NTS SHEET 3 OF 3 SHEETS STA. TO STA.

H.S.B. RTE.	SECTION	COUNTY	TOTAL SHEETS	SHEET NO.
393	2014-0911	COOK	21	5
CONTRACT NO. 62A48				
ILLINOIS FED. AID PROJECT				

Rev.



CHINATOWN FEEDER
UNDER I-90/94 (DAN RYAN EXPY)
EXISTING TYPICAL SECTION



CHINATOWN FEEDER
UNDER I-90/94 (DAN RYAN EXPY)
PROPOSED TYPICAL SECTION

- LEGEND**
- ① EXISTING PAVEMENT
 - ② EXISTING HMA SHOULDER
 - ③ EXISTING CONCRETE BARRIER WALL WITH ELECTRICAL IN 2" PVC CONDUIT TO BE REMOVED
 - ④ EXISTING INFIELD WITH 2" AGGREGATE SURFACE
 - ⑤ EXISTING INFIELD
 - ⑥ PROP. HOT-MIX ASPHALT SHOULDERS, 6"
 - ⑦ PROP. CONCRETE BARRIER, SINGLE FACE, 42" HEIGHT TO BE ANCHORED TO PROPOSED HMA SHOULDER
 - ⑧ AGGREGATE SURFACE COURSE, TYPE B (6" RIDING SURFACE)

HOT-MIX ASPHALT MIXTURE REQUIREMENTS

MIXTURE TYPE	AIR VOIDS @ NDES	QUALITY MANAGEMENT PROGRAM (OMP)
HOT-MIX ASPHALT SHOULDERS, 6" (HMA BINDER IL-19 MM)	4% @ 50 GYR	QC/QA
OMP DESIGNATION: QUALITY CONTROL/QUALITY ASSURANCE (QC/QA); QUALITY CONTROL FOR PERFORMANCE (QCP); PAY FOR PERFORMANCE (PFP)		

NOTES:

1. THE UNIT WEIGHT USED TO CALCULATE ALL HMA MIXTURE QUANTITIES IS 112 LBS/SOYD/IN.
2. QUALITY MANAGEMENT PROGRAM (OMP) IDENTIFIES THE PARTICULAR QUALITY CONTROL SPECIFICATION THAT APPLIES TO THE HMA MIXTURE.
3. FOR USE OF RECYCLED MATERIALS, SEE DISTRICT ONE SPECIAL PROVISIONS.
4. FOR NON-POLYMERIZED HMA, THE "AC TYPE" SHALL BE "PG 64-22" UNLESS MODIFIED BY DISTRICT ONE SPECIAL PROVISIONS.

M:\CHINATOWN FEEDER (12-154-007)\Design\Civil\CADD Sheets\DI62A4B-sht-typical.dgn



USER NAME = KyieC	DESIGNED - KJC	REVISED -
	DRAWN - KJC	REVISED -
PLOT SCALE = NTS	CHECKED - LVA	REVISED -
PLOT DATE = 6/11/2015	DATE - 04/07/2015	REVISED -

**STATE OF ILLINOIS
DEPARTMENT OF TRANSPORTATION**

**HSB RTE 393: CHINATOWN FEEDER UNDER I-90 /94
TYPICAL SECTIONS**

SCALE: NTS SHEET 1 OF 1 SHEETS STA. TO STA.

H.S.B. RTE.	SECTION	COUNTY	TOTAL SHEETS	SHEET NO.
393	2014-0911	COOK	21	6
CONTRACT NO. 62A4B				
ILLINOIS FED. AID PROJECT				

CHINATOWN FEEDER ACCESS AREA EARTHWORK SCHEDULE

A	B	C	D	E	F	G	H	I
FROM STA	TO STA	EARTH EXCAVATION (CU YD)	UNSUITABLE MATERIAL (CU YD)	15% ADJUSTMENT FOR SHRINKAGE (CU YD)	EARTH EMBANKMENT (CU YD)	EARTHWORK BALANCE WASTE(+) SHORTAGE(-) (CU YD)	AGGREGATE EXCAVATION (CU YD)	AGGREGATE SURFACE COURSE, TY B (CU YD)
0+00.00	0+50.00	5.46	0.55	4.18	67.50	-63.32	1.30	59.72
0+50.00	1+00.00	11.48	1.15	8.78	20.83	-12.05	2.50	55.28
1+00.00	1+50.00	17.87	1.79	13.67	13.89	-0.22	4.63	49.63
1+50.00	2+00.00	21.30	2.13	16.29	2.22	14.07	6.85	43.24
2+00.00	2+50.00	25.56	2.56	19.55	0.37	19.18	10.00	36.20
2+50.00	3+00.00	27.96	2.80	21.39	0.74	20.65	11.30	31.76
3+00.00	3+50.00	16.57	1.66	12.68	0.37	12.31	8.15	23.61
3+50.00	4+00.00	7.69	0.77	5.88		5.88	5.46	15.56
4+00.00	4+50.00	4.72	0.47	3.61		3.61	2.59	7.69
TOTAL		139	14	106	106	0	53	323

LEGEND

COLUMNS A AND B: LOCATION ON PLANS

COLUMN C: CUT QUANTITIES FROM CROSS SECTIONS

COLUMN D: = C X 0.1

CUT MATERIAL THAT IS DETERMINED TO BE EITHER UNSTABLE OR UNSUITABLE FOR USE IN EMBANKMENT. ASSUME 10% OF EARTH EXCAVATION.

COLUMN E: = (C - D) X 0.85

EARTH EXCAVATION THAT IS TO BE USED AS FILL MATERIAL IN THE EMBANKMENT. A SHRINKAGE FACTOR OF 15% IS USED.

COLUMN F: FILL QUANTITIES FROM CROSS SECTIONS

COLUMN G: = E - F

POSITIVE QUANTITY = EXTRA EXCAVATION. NEGATIVE QUANTITY = FURNISHED EXCAVATION NEEDED.

COLUMN H: AGGREGATE EXCAVATION THAT IS TO BE RE-USED IN AGGREGATE SURFACE COURSE ASSUMED EXISTING AGGREGATE DEPTH OF 2" (TYP.) THROUGHOUT SITE

COLUMN I: PROPOSED AGGREGATE SURFACE COURSE, TYPE B (6" RESULTANT RIDING SURFACE)

M:\CHINATOWN FEEDER 12-154-007\Design\Civil\CADD Sheets\162A4B-sht-schedule.dgn Defaut

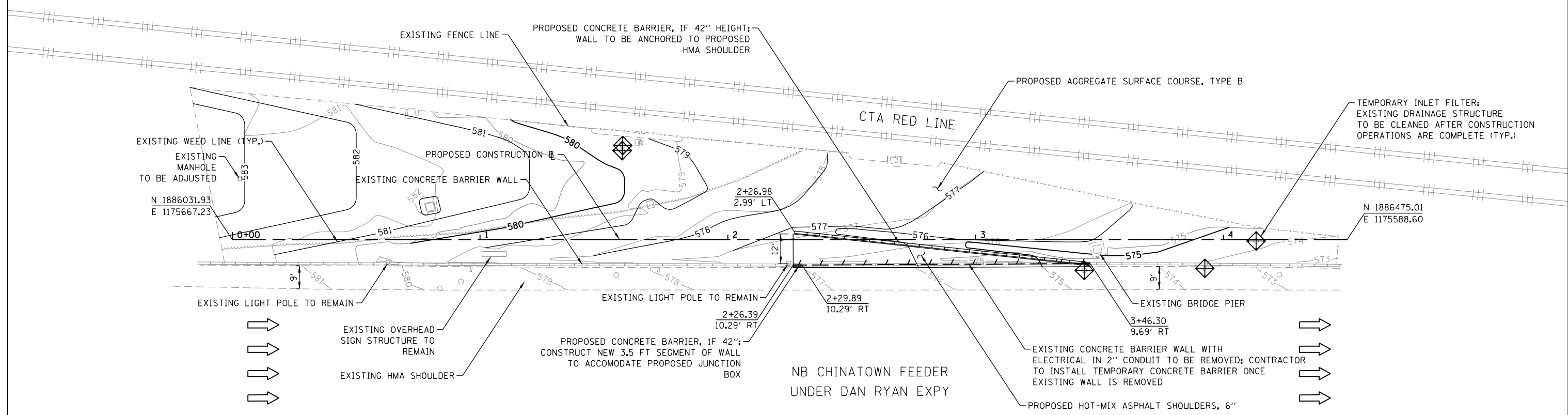
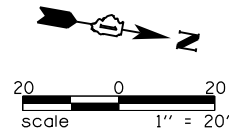


USER NAME = KjieC	DESIGNED - KJC	REVISED -
	DRAWN - KJC	REVISED -
PLOT SCALE = NTS	CHECKED - LVA	REVISED -
PLOT DATE = 6/11/2015	DATE - 04/07/2015	REVISED -

**STATE OF ILLINOIS
DEPARTMENT OF TRANSPORTATION**

HSB RTE 393: CHINATOWN FEEDER UNDER I-90 /94			
SCHEDULE OF QUANTITIES			
SCALE: NTS	SHEET 1 OF 1 SHEETS	STA.	TO STA.

H.S.B. RTE.	SECTION	COUNTY	TOTAL SHEETS	SHEET NO.
393	2014-0911	COOK	21	7
			CONTRACT NO. 62A48	
ILLINOIS FED. AID PROJECT				



M:\CHINATOWN FEEDER 12-154-007\Design\Civil\CADD Sheets\162A4B-sht-plan.dgn

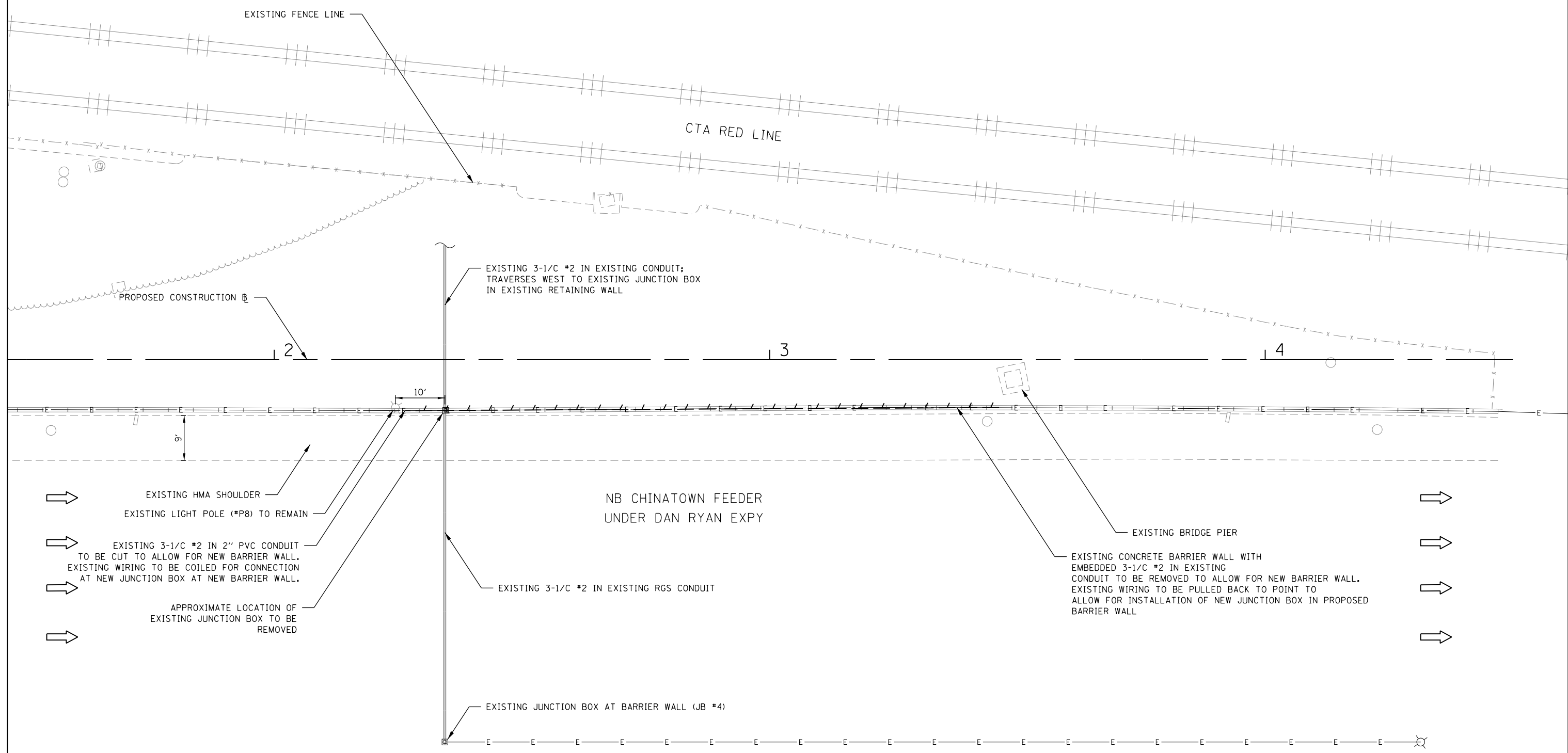
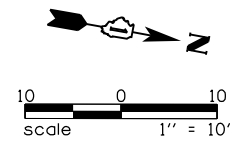


USER NAME = KjieC	DESIGNED - KJC	REVISED -
	DRAWN - KJC	REVISED -
PLOT SCALE = 1" = 20'	CHECKED - LVA	REVISED -
PLOT DATE = 6/11/2015	DATE - 04/07/2015	REVISED -

**STATE OF ILLINOIS
DEPARTMENT OF TRANSPORTATION**

HSB RTE 393: CHINATOWN FEEDER UNDER I-90 /94			
PLAN SHEET			
SCALE: 1" = 20'	SHEET 1 OF 1 SHEETS	STA.	TO STA.

H.S.B. RTE. 393	SECTION 2014-0911	COUNTY COOK	TOTAL SHEETS 21	SHEET NO. 8
CONTRACT NO. 62A4B				
ILLINOIS FED. AID PROJECT				



- NOTES:
1. REMOVAL OF EXISTING EMBEDDED CONDUIT AND CABLE TO BE INCLUDED IN THE COST OF BARRIER WALL REMOVAL.
 2. CONTRACTOR TO RE-USE EXISTING WIRING AS NEEDED IN RE-CONNECTION TO PROPOSED JUNCTION BOXES.

M:\CHINATOWN FEEDER 12-154-007\Design\Civil\CADD Sheets\162A4B-sht-1-light.dgn

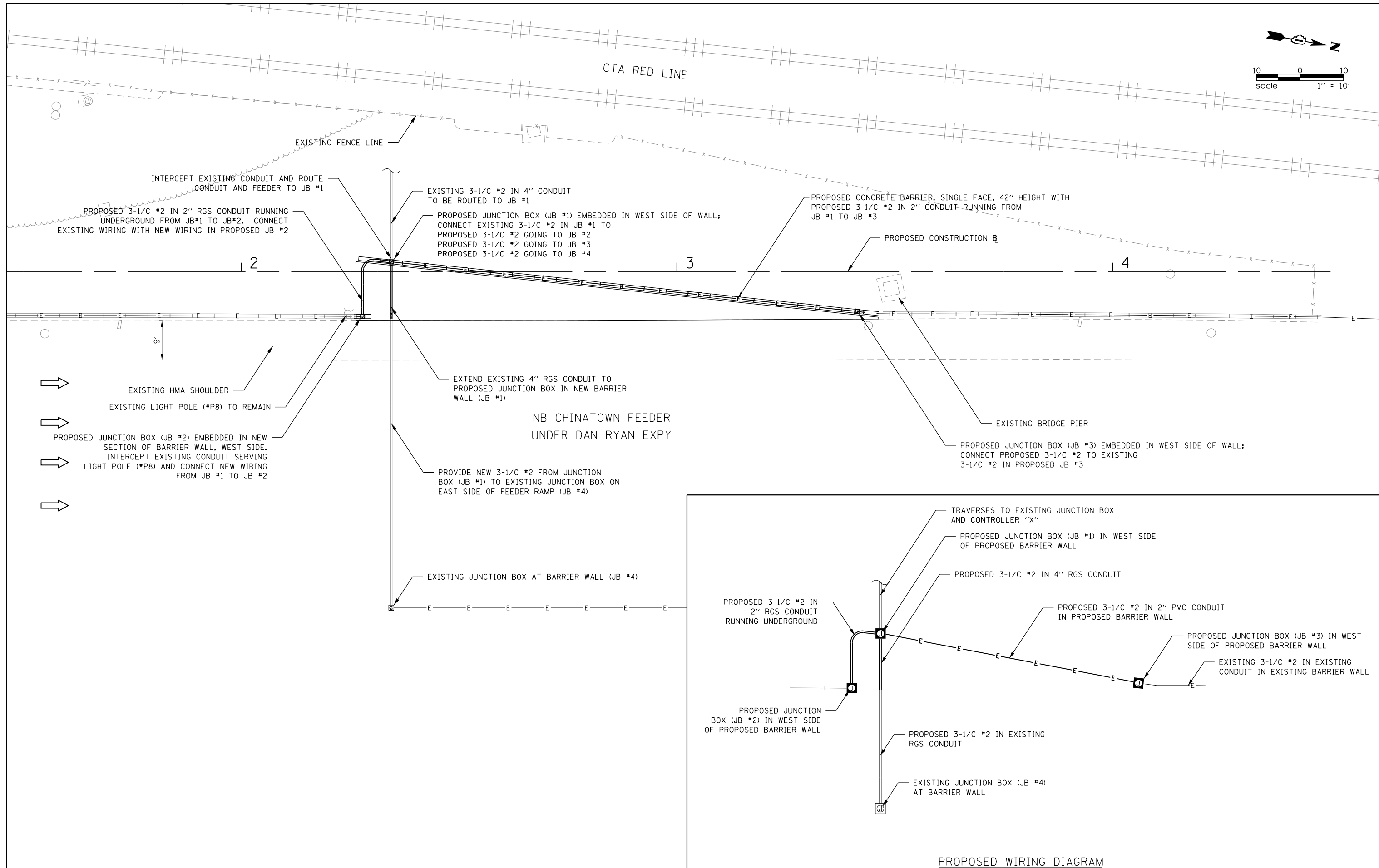
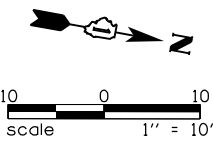


USER NAME = KyieC	DESIGNED - EE	REVISED -
	DRAWN - KJC	REVISED -
PLOT SCALE = 1" = 10'	CHECKED - EE	REVISED -
PLOT DATE = 4/7/2015	DATE - 04/07/2015	REVISED -

**STATE OF ILLINOIS
DEPARTMENT OF TRANSPORTATION**

HSB RTE 393: CHINATOWN FEEDER UNDER I-90 /94	
EXISTING LIGHTING DEMOLITION PLAN	
SCALE: 1" = 10'	SHEET 1 OF 3 SHEETS STA. TO STA.

H.S.B. RTE. 393	SECTION 2014-0911	COUNTY COOK	TOTAL SHEETS 21	SHEET NO. 9
CONTRACT NO. 62A48				
ILLINOIS FED. AID PROJECT				



M:\CHINATOWN FEEDER (12-154-007)\Design\Civil\CADD Sheets\162A4B-shr-light-2.dgn



USER NAME = KyeC	DESIGNED - EE	REVISED -
	DRAWN - KJC	REVISED -
PLOT SCALE = 1" = 10'	CHECKED - EE	REVISED -
PLOT DATE = 4/7/2015	DATE - 04/07/2015	REVISED -

**STATE OF ILLINOIS
DEPARTMENT OF TRANSPORTATION**

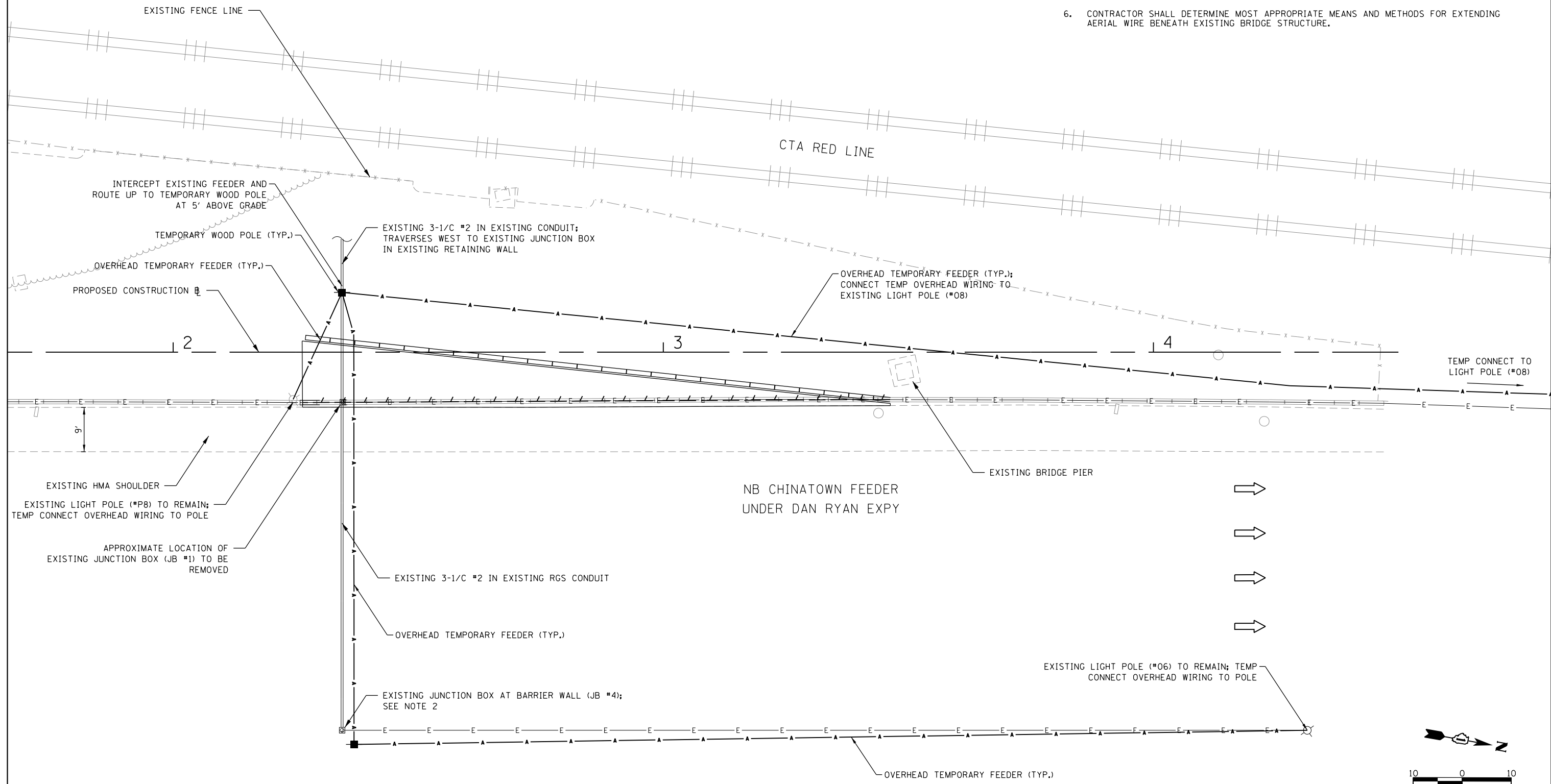
**HSB RTE 393: CHINATOWN FEEDER UNDER I-90 /94
PROPOSED LIGHTING RELOCATION PLAN & WIRING DIAGRAM**

SCALE: 1" = 10' SHEET 2 OF 3 SHEETS STA. TO STA.

H.S.B. RTE. 393	SECTION 2014-0911	COUNTY COOK	TOTAL SHEETS 21	SHEET NO. 10
CONTRACT NO. 62A48			ILLINOIS FED. AID PROJECT	

NOTES:

1. OVERHEAD FEEDER TO BE AERIAL CABLE, 3-1/C #2 WITH MESSENGER WIRE.
2. CONTRACTOR TO DISCONNECT FEEDER FROM EXISTING JUNCTION BOX (JB #1) TO JB #4 DURING TEMPORARY INSTALLATION TO ALLOW FOR TEMPORARY CONNECTION AT POLE #06 TO ACT AS MAIN FEEDER FOR THIS SIDE. ADJUST WIRING IN JB #4 AND OTHERS AS REQUIRED.
3. CONNECT TEMPORARY FEEDER AT LIGHT POLES #P8 AND #08 TO ENSURE PROPER CONNECTION.
4. PROVIDE REQUIRED ITEMS AS PART OF THIS WORK.
5. SUPPORT TEMPORARY AERIAL CABLES ON EXISTING STRUCTURE AS REQUIRED TO REACH IDENTIFIED POLES. PROVIDE ALL SUPPORT FOR COMPLETE INSTALLATION.
6. CONTRACTOR SHALL DETERMINE MOST APPROPRIATE MEANS AND METHODS FOR EXTENDING AERIAL WIRE BENEATH EXISTING BRIDGE STRUCTURE.



M:\CHINATOWN FEEDER 12-154-007\Design\Civil\CADD Sheets\162A4B-shr-light-3.dgn



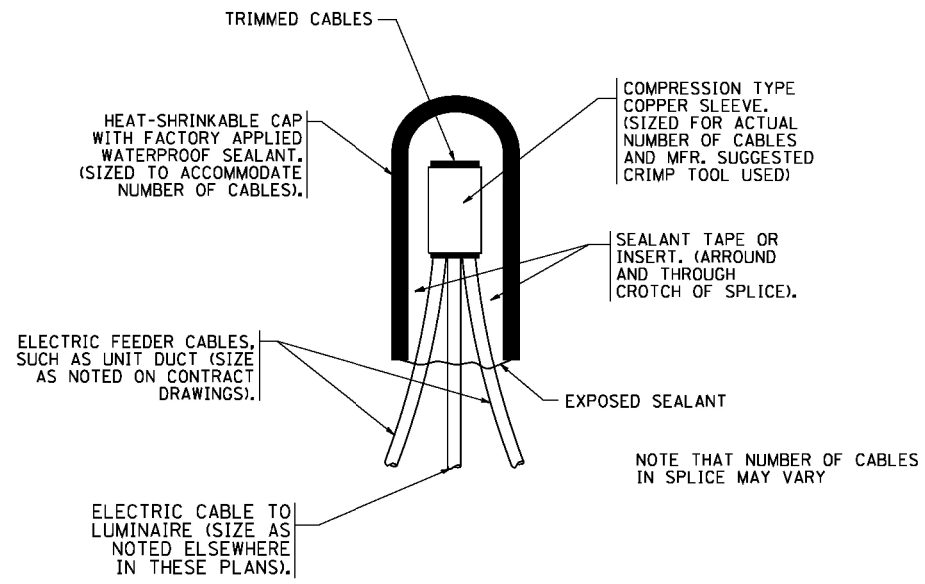
USER NAME = KyeC	DESIGNED - EE	REVISED -
DRAWN - KJC	REVISIONS -	
PLOT SCALE = NTS	CHECKED - EE	REVISED -
PLOT DATE = 4/7/2015	DATE - 04/07/2015	REVISED -

**STATE OF ILLINOIS
DEPARTMENT OF TRANSPORTATION**

**HSB RTE 393: CHINATOWN FEEDER UNDER I-90 /94
TEMPORARY LIGHTING SYSTEM PLAN**

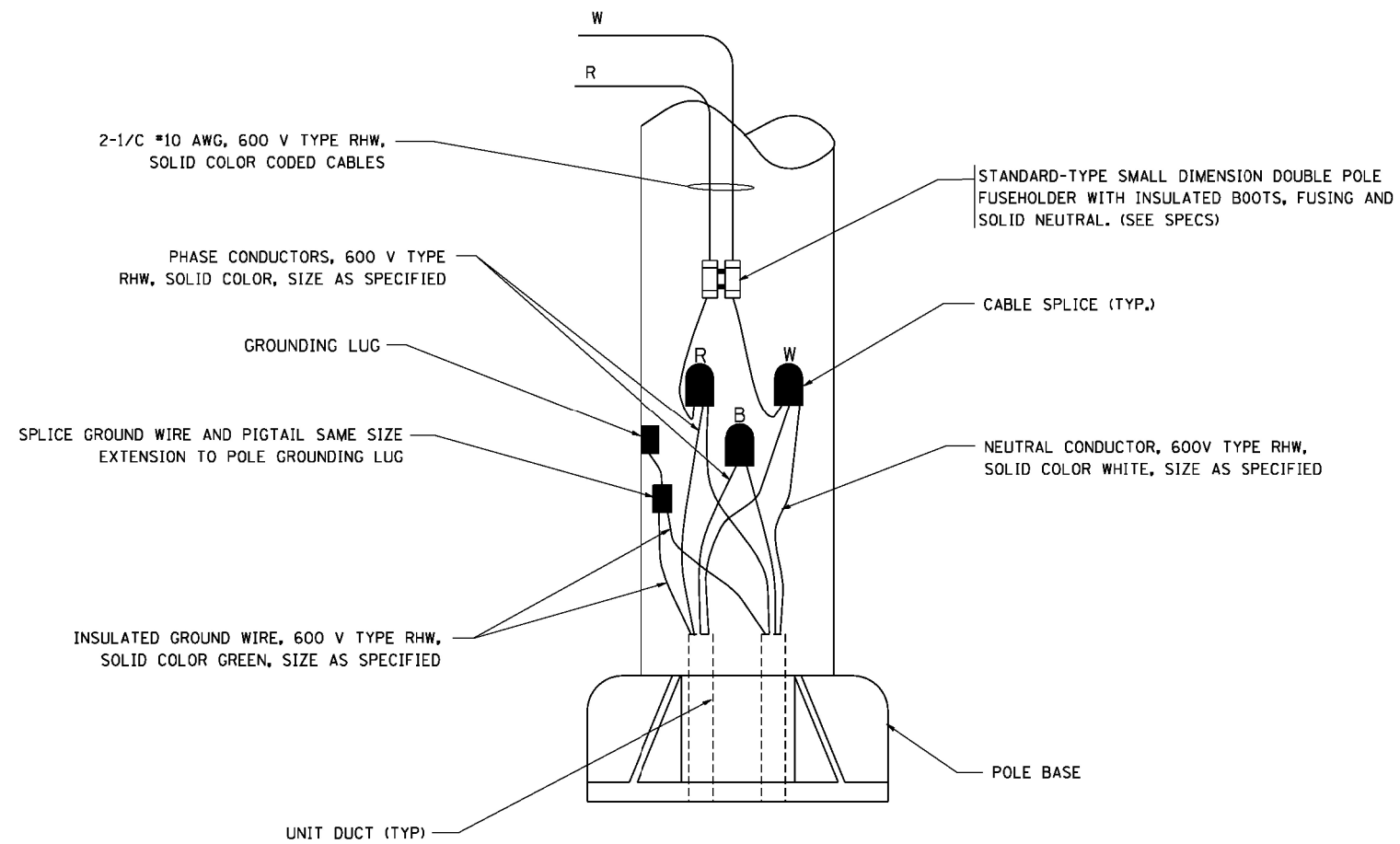
SCALE: NTS SHEET 3 OF 3 SHEETS STA. TO STA.

H.S.B. RTE. 393	SECTION 2014-0911	COUNTY COOK	TOTAL SHEETS 21	SHEET NO. 11
CONTRACT NO. 62A4B			ILLINOIS FED. AID PROJECT	



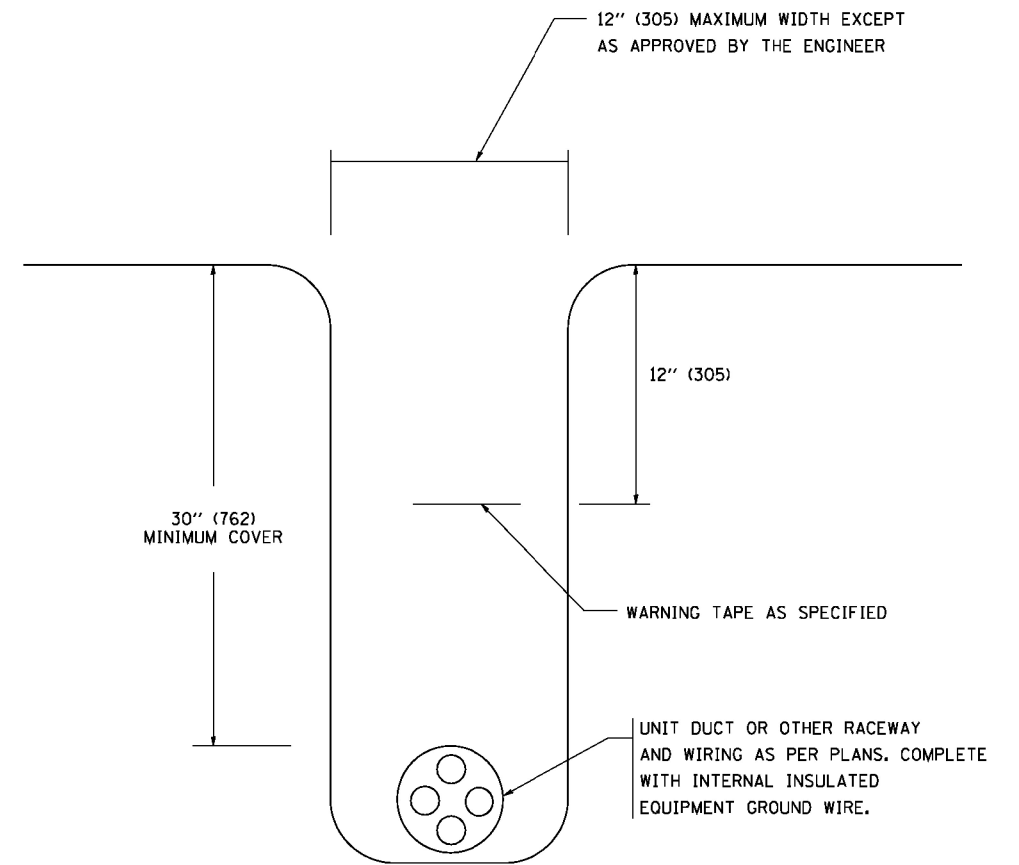
TYPICAL SPLICE DETAIL

N.T.S.



POLE WIRING DETAIL

N.T.S.



TYPICAL WIRING IN TRENCH DETAIL

N.T.S.

FILE NAME =	USER NAME = geglano
W:\distatd\22x34\be702.dgn	

DESIGNED -	REVISD - 08-08-03
DRAWN -	REVISD -
CHECKED -	REVISD -
DATE -	REVISD -

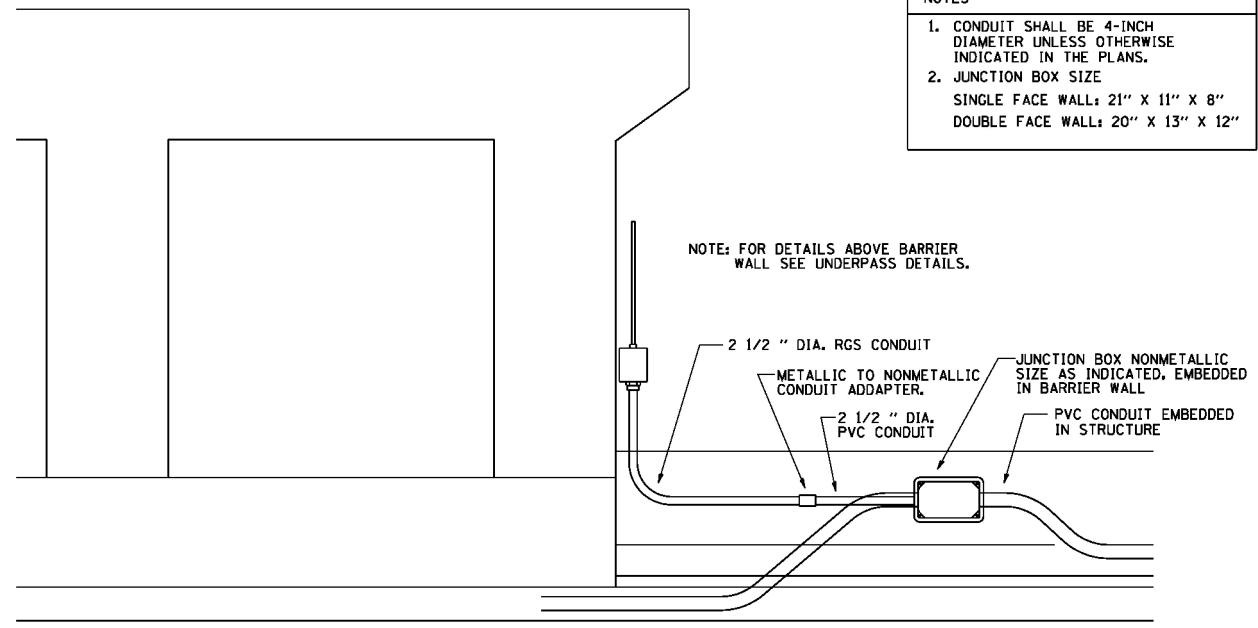
PLOT SCALE = 50.000' / IN.	
PLOT DATE = 1/4/2008	

DESIGNED -	REVISD - 08-08-03
DRAWN -	REVISD -
CHECKED -	REVISD -
DATE -	REVISD -

**STATE OF ILLINOIS
DEPARTMENT OF TRANSPORTATION**

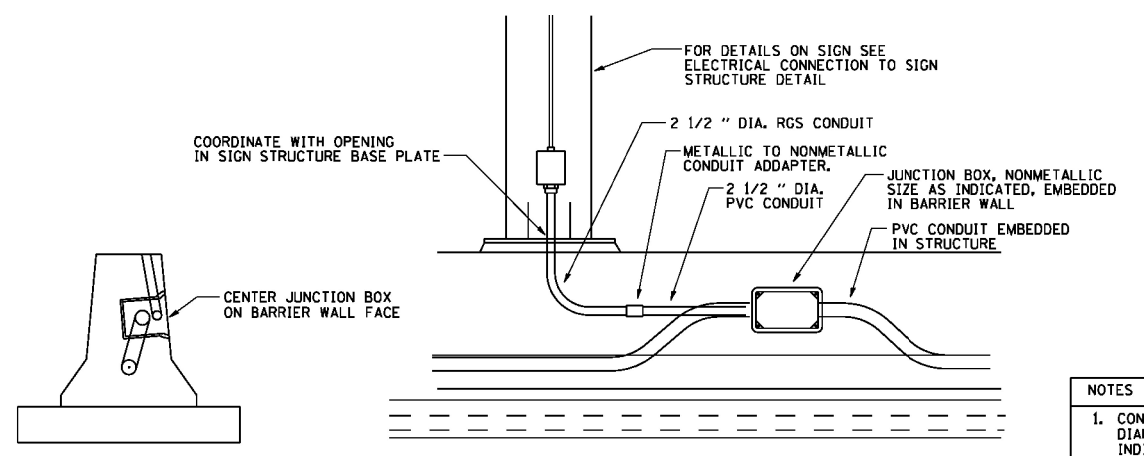
MISC. ELECTRICAL DETAILS SHEET A			
SCALE: NONE	SHEET NO. 1 OF 1 SHEETS	STA.	TO STA.

H.S.B. RTE.	SECTION	COUNTY	TOTAL SHEETS	SHEET NO.
393	2014-0911	COOK	21	12
BE-702			CONTRACT NO. 62A48	
FED. ROAD DIST. NO. 1 ILLINOIS FED. AID PROJECT				



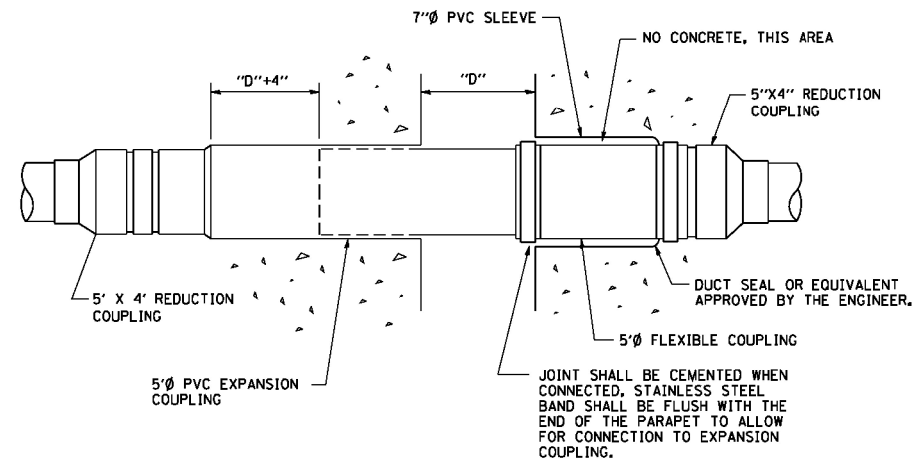
- NOTES
1. CONDUIT SHALL BE 4-INCH DIAMETER UNLESS OTHERWISE INDICATED IN THE PLANS.
 2. JUNCTION BOX SIZE
SINGLE FACE WALL: 21" X 11" X 8"
DOUBLE FACE WALL: 20" X 13" X 12"

ED - BWD
ELECTRIC CONNECTION TO UNDERPASS LIGHTING

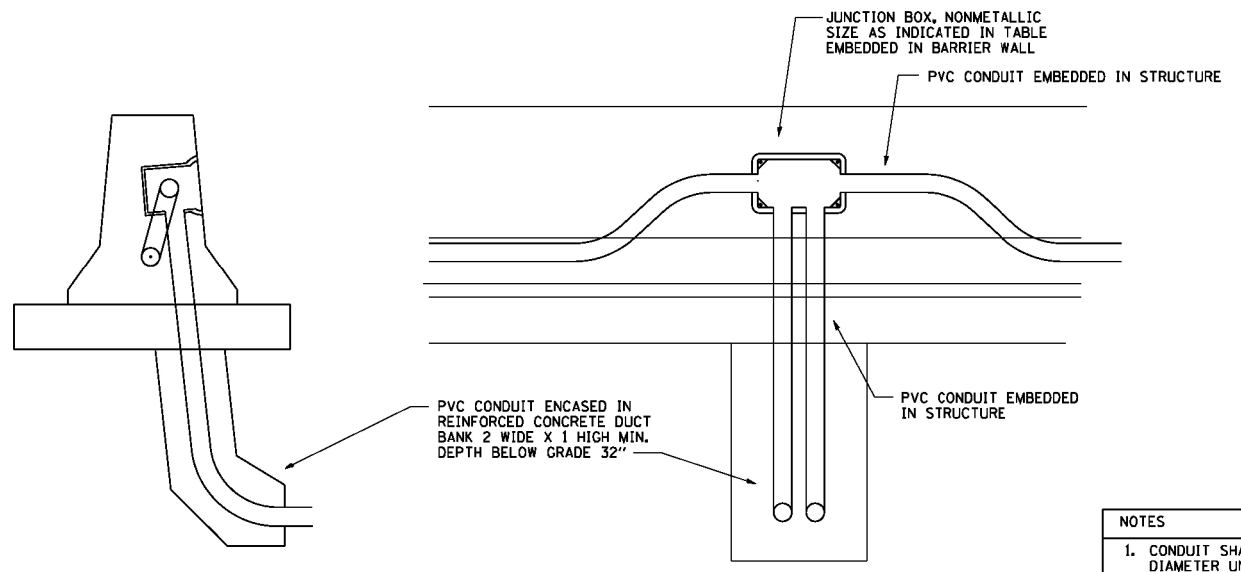


- NOTES
1. CONDUIT SHALL BE 4-INCH DIAMETER UNLESS OTHERWISE INDICATED IN THE PLANS.
 2. JUNCTION BOX SIZE
SINGLE FACE WALL: 21" X 11" X 8"
DOUBLE FACE WALL: 20" X 13" X 12"

ED - SGN
JUNCTION BOX EMBEDDED IN BARRIER WALL FOR SIGN LIGHTING



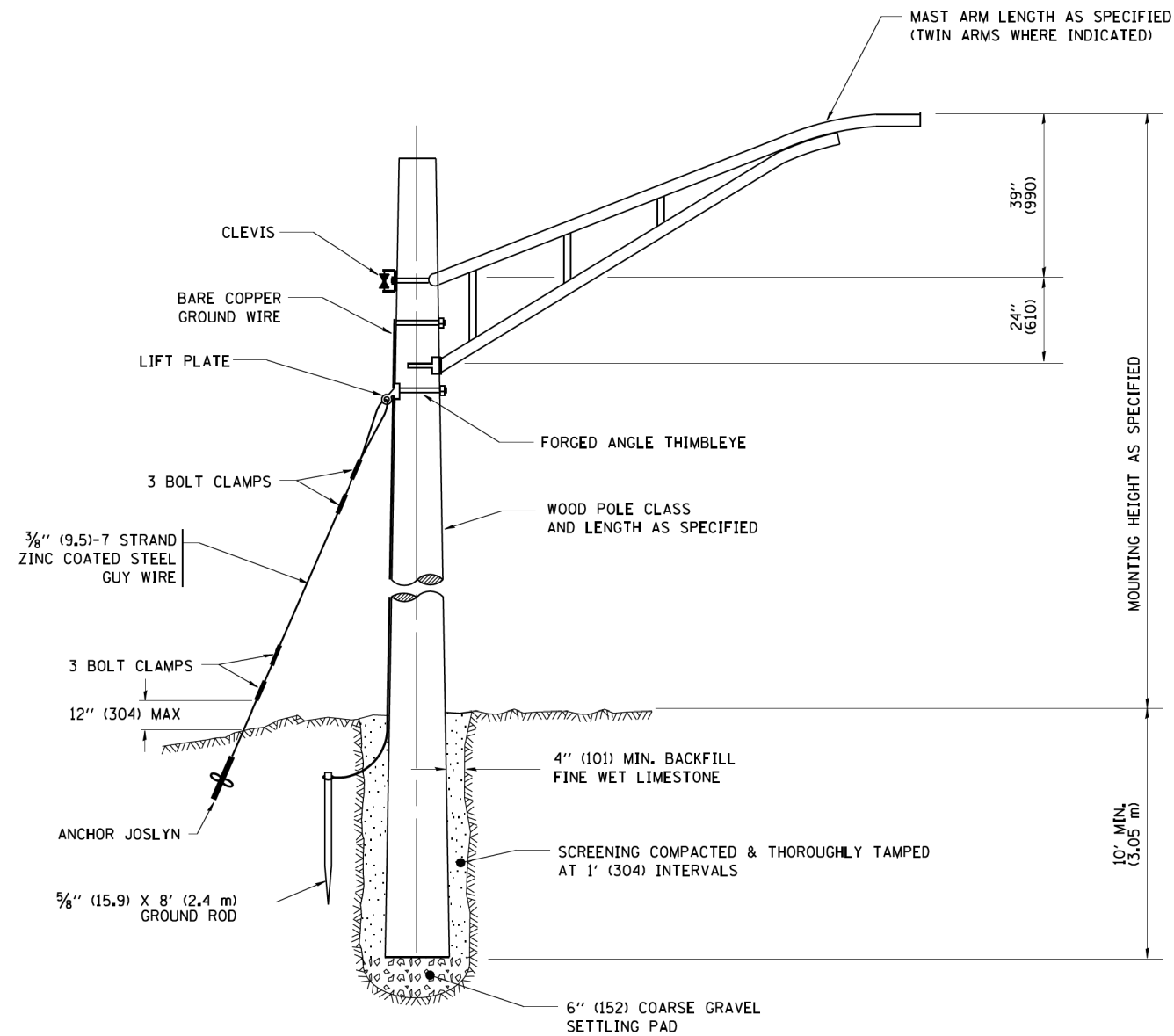
INSTALLATION OF CONDUIT
IN BRIDGE PARAPET EXPANSION JOINT
(N.T.S.)



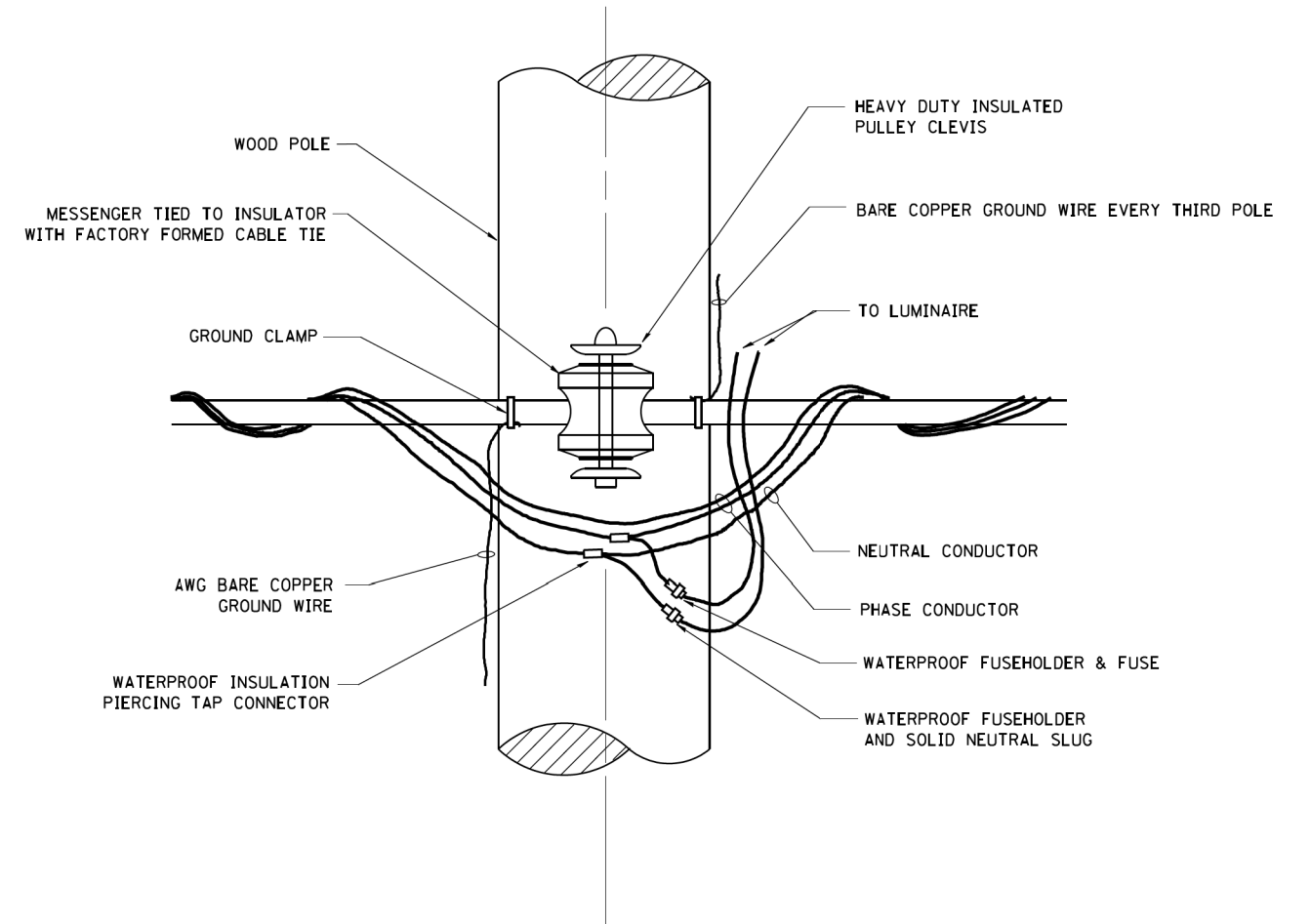
- NOTES
1. CONDUIT SHALL BE 4-INCH DIAMETER UNLESS OTHERWISE INDICATED IN THE PLANS.
 2. JUNCTION BOX SIZE
SINGLE FACE WALL: 21" X 11" X 8"
DOUBLE FACE WALL: 20" X 13" X 12"

ED - BW
JUNCTION BOX EMBEDDED IN BARRIER WALL

FILE NAME = be703.dgn	USER NAME = geglano	DESIGNED -	REVISED -	STATE OF ILLINOIS DEPARTMENT OF TRANSPORTATION	MISCELLANEOUS ELECTRICAL DETAILS, SHEET B			H.S.B. RTE.	SECTION	COUNTY	TOTAL SHEETS	SHEET NO.
		DRAWN -	REVISED -		J BOX EMBEDDED IN BARRIER WALL - INSTALLATION OF CONDUIT IN BRIDGE PARAPET EXPANSION JOINT - ELECTRIC CONNECTION TO UNDERPASS LIGHTING			393	2014-0911	COOK	21	13
		CHECKED -	REVISED -		SCALE: NONE SHEET NO. 1 OF 1 SHEETS STA. TO STA.			BE-703		CONTRACT NO. 62A48		
		DATE - 01-20-2009	REVISED -		FED. ROAD DIST. NO. 1 ILLINOIS FED. AID PROJECT							



TEMPORARY LIGHT POLE DETAIL

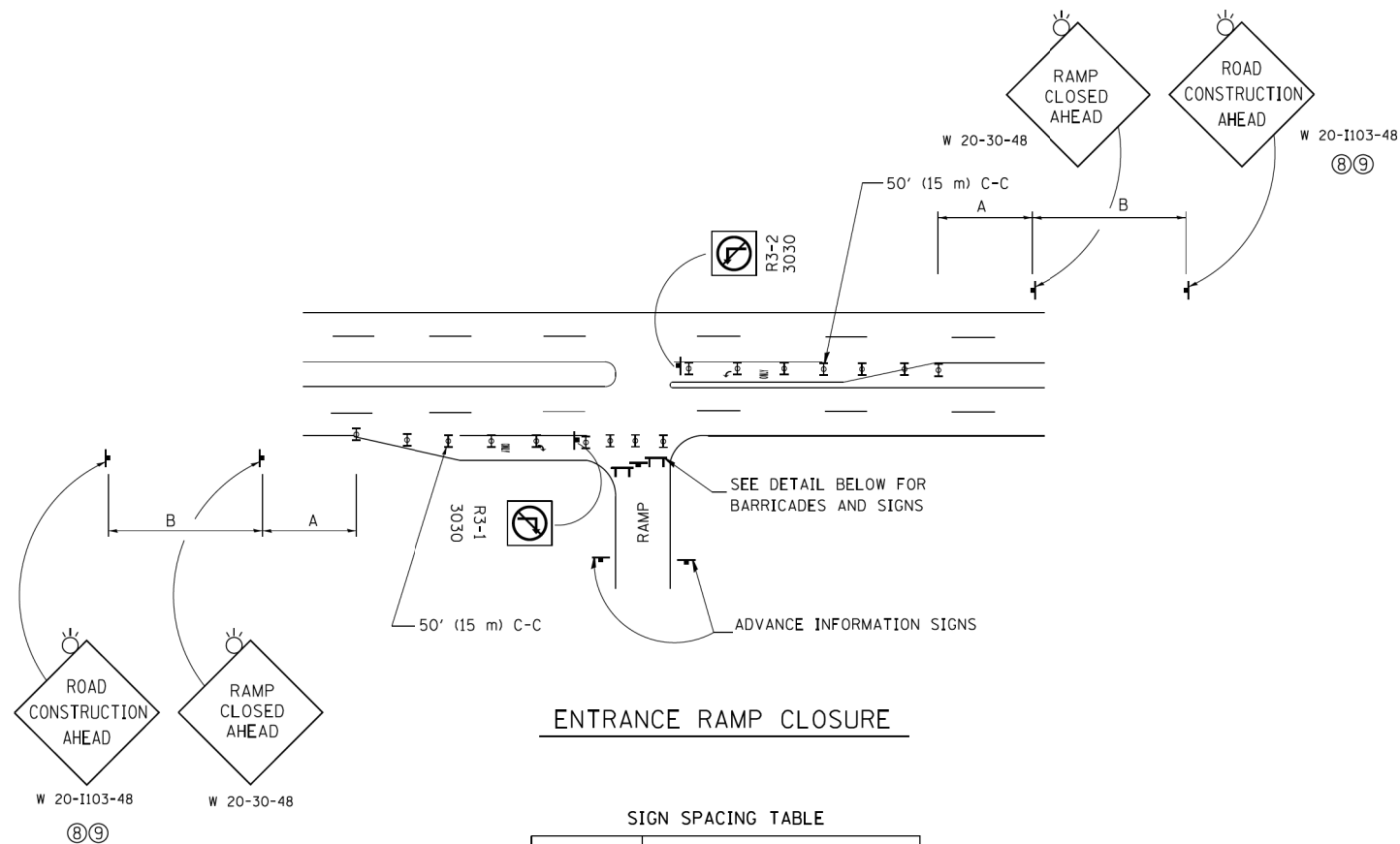


TEMPORARY LIGHT POLE ATTACHMENT DETAIL

NOTES:

1. ALL DIMENSIONS IN INCHES (MILLIMETERS) UNLESS OTHERWISE INDICATED

FILE NAME = W:\distad\22x34\be800.dgn	USER NAME = geglano	DESIGNED -	REVISED - 08-08-03	STATE OF ILLINOIS DEPARTMENT OF TRANSPORTATION	TEMPORARY LIGHT POLE DETAILS			H.S.B. RTE. 393	SECTION 2014-0911	COUNTY COOK	TOTAL SHEETS 21	SHEET NO. 14
	PLOT SCALE = 50.000' / IN.	CHECKED -	REVISED -					SCALE: NONE	SHEET NO. 1 OF 1 SHEETS	STA. TO STA.	BE-800	
PLOT DATE = 1/4/2008	DATE -	REVISED -					FED. ROAD DIST. NO. 1 ILLINOIS FED. AID PROJECT					

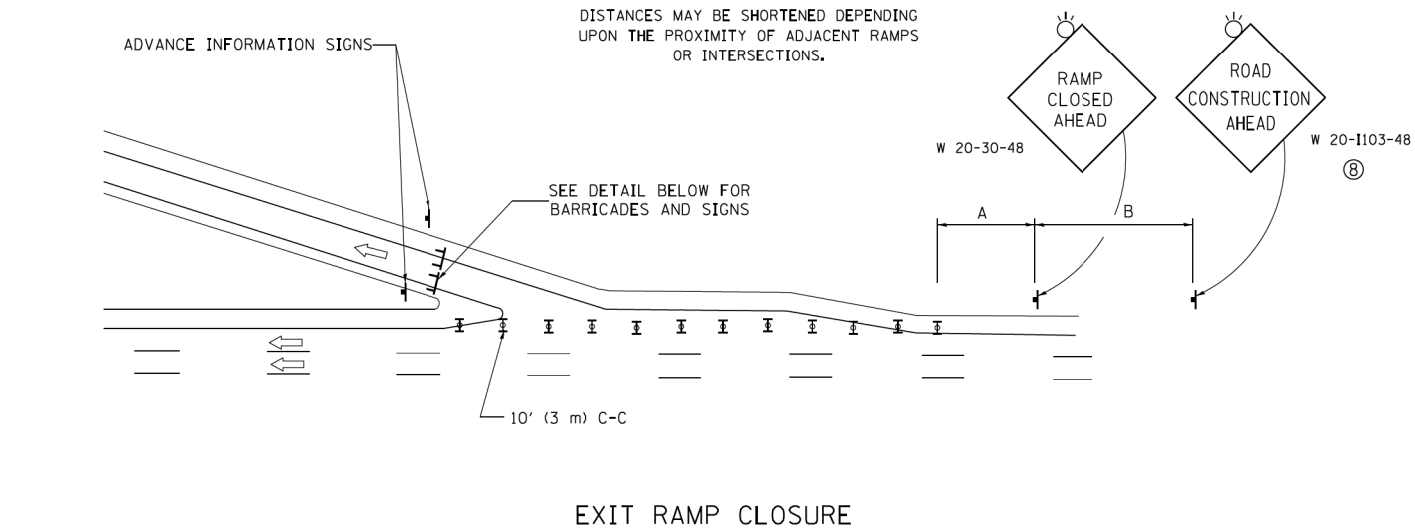


ENTRANCE RAMP CLOSURE

SIGN SPACING TABLE

FACILITY	DISTANCE BETWEEN SIGNS	
	A	B
EXPRESSWAY >24 HOURS	1000' (300 m)	1500' (450 m)
EXPRESSWAY ≤24 HOURS	500' (150 m)	500' (150 m)
ARTERIAL 55 MPH	500' (150 m)	500' (150 m)
ARTERIAL 50-45 MPH	350' (100 m)	350' (100 m)
ARTERIAL <45 MPH	200' (60 m)	200' (60 m)

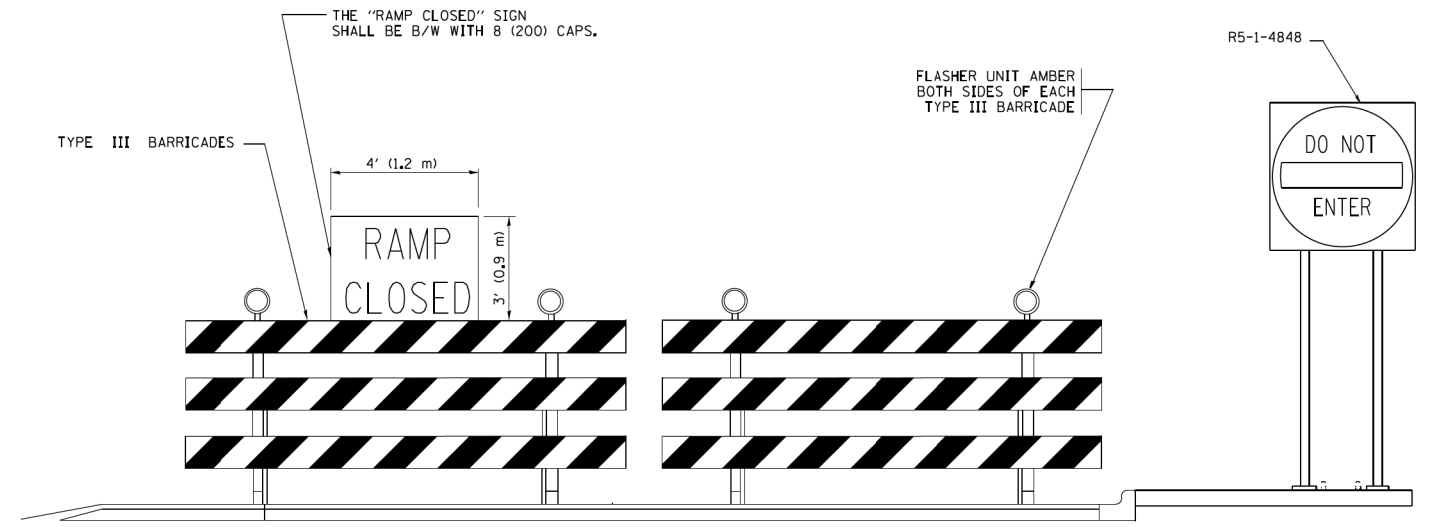
DISTANCES MAY BE SHORTENED DEPENDING UPON THE PROXIMITY OF ADJACENT RAMPS OR INTERSECTIONS.



EXIT RAMP CLOSURE

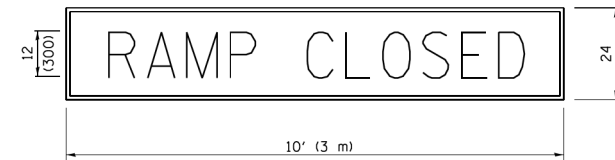
SYMBOLS

- ⊥ TYPE II BARRICADE OR DRUM WITH STEADY BURN MONO-DIRECTIONAL LIGHT
- ⊥ TYPE III BARRICADE WITH 2 FLASHING LIGHTS



DETAIL FOR REQUIRED BARRICADES & SIGNS

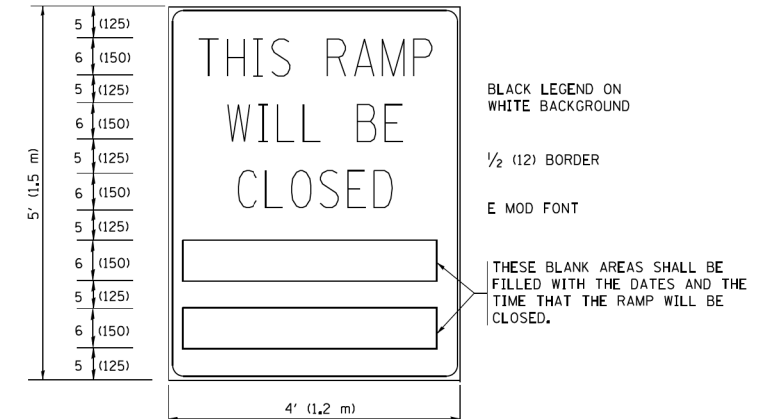
RAMP CLOSURE ADVANCE WARNING SIGN



BLACK LEGEND ON ORANGE BACKGROUND MOUNTED DIAGONALLY
E MOD FONT
1 (25) BORDER

THESE SIGNS ARE REQUIRED ON ALL THE EXIT GUIDE SIGNS FOR EXIT RAMPS THAT WILL BE CLOSED FOR MORE THAN FOUR (4) CONSECUTIVE DAYS.

RAMP CLOSURE ADVANCE INFORMATION SIGN



BLACK LEGEND ON WHITE BACKGROUND

1/2 (12) BORDER

E MOD FONT

THESE BLANK AREAS SHALL BE FILLED WITH THE DATES AND THE TIME THAT THE RAMP WILL BE CLOSED.

THESE SIGNS ARE REQUIRED ON BOTH SIDES OF THE RAMP, MINIMUM OF 1 WEEK IN ADVANCE OF THE CLOSURE.

THESE SIGNS SHALL BE FABRICATED AND PAID FOR ACCORDING TO THE TEMPORARY INFORMATION SIGNING SPECIAL PROVISION

GENERAL NOTES:

- ① CONES MAY BE SUBSTITUTED FOR DRUMS OR TYPE II BARRICADES DURING DAY OPERATIONS. CONES SHALL BE A MINIMUM OF 28 (700) HIGH.
- ② STEADY BURN LIGHTS WILL NOT BE REQUIRED FOR DAY OPERATIONS.
- ③ A FLAGGER SHALL BE POSITIONED AT EACH CLOSED RAMP THAT IS OPEN TO CONSTRUCTION VEHICLES, PRECEDED BY A W20-7 FLAGGER WARNING SIGN.
- ④ ALL ROUTE MARKERS AND TRAILBLAZER ASSEMBLIES WHICH DIRECT MOTORISTS TO A CLOSED ENTRANCE RAMP SHALL BE COVERED WHEN THE RAMP IS CLOSED FOR MORE THAN FOUR (4) DAYS.
- ⑤ THE SIGNING AND BARRICADING WHICH IS REQUIRED BY THIS DETAIL SHALL BE INCLUDED IN THE COST OF TRAFFIC CONTROL AND PROTECTION (EXPRESSWAYS).
- ⑥ AUTHORIZATION FROM THE DISTRICT'S BUREAU OF TRAFFIC IS REQUIRED FOR ALL RAMP CLOSURES.
- ⑦ THE RAMP CLOSURE ADVANCE INFORMATION SIGNS SHALL BE ERECTED IF THE CLOSURE TIME EXCEEDS TWENTY-FOUR (24) HOURS. ADDITIONAL ADVANCE WARNING SIGNS ON EXIT GUIDE SIGNING WILL BE REQUIRED FOR EXIT RAMP CLOSURES THAT EXCEED FOUR (4) DAYS IN LENGTH.
- ⑧ ROAD CONSTRUCTION AHEAD SIGNS MAY BE OMITTED WHEN THIS DETAIL IS USED IN CONJUNCTION WITH OTHER TRAFFIC CONTROL THAT ALREADY INCLUDES A ROAD CONSTRUCTION AHEAD SIGN.
- ⑨ ARTERIAL ROAD CONSTRUCTION AHEAD SIGNS SHALL BE INSTALLED ON THE LEFT SIDE OF TRAFFIC IF THE MEDIAN IS MORE THAN 10 FT WIDE.

ALL DIMENSIONS ARE IN INCHES (MILLIMETERS) UNLESS OTHERWISE SHOWN.

FILE NAME =	USER NAME = footemj	DESIGNED - DWS	REVISED - JAF 02-06
ca:\pwork\pwork\footemj\d0108315\td08.dgn		DRAWN -	REVISED - SPB 01-07
	PLOT SCALE = 50.000' / in.	CHECKED -	REVISED - SPB 12-09
	PLOT DATE = 7/8/2013	DATE - 02-83	REVISED - MD 06-13

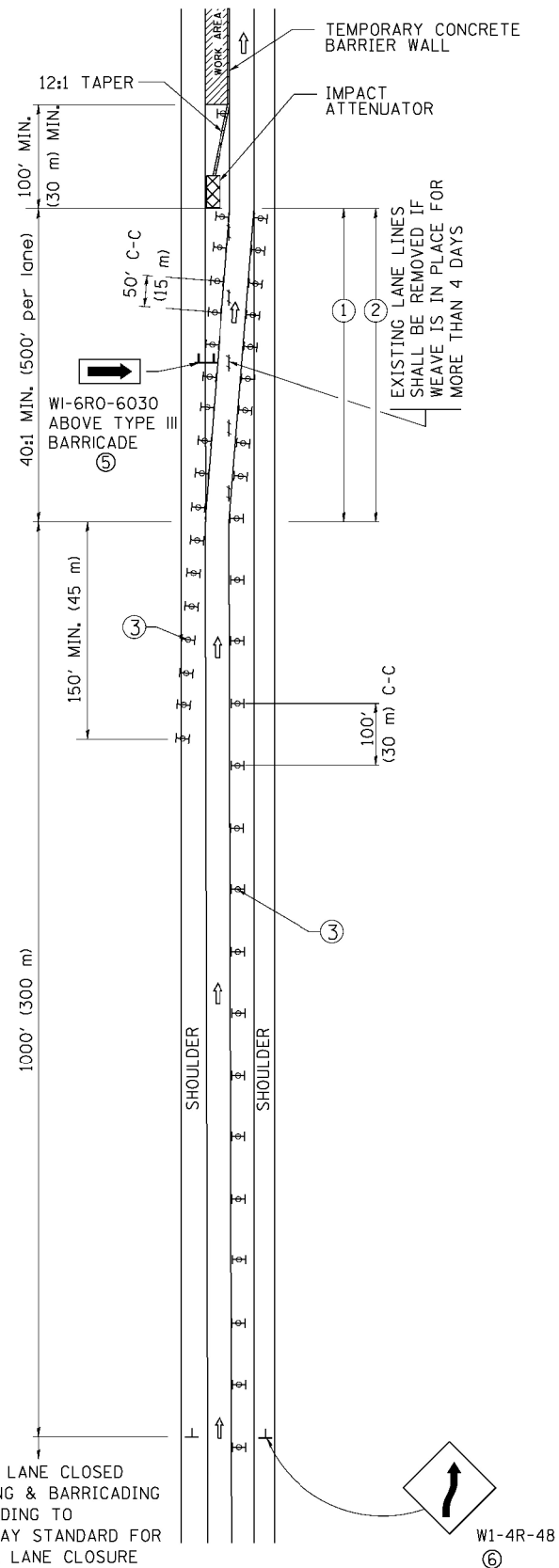
**STATE OF ILLINOIS
DEPARTMENT OF TRANSPORTATION**

**ENTRANCE AND EXIT RAMP
CLOSURE DETAILS**

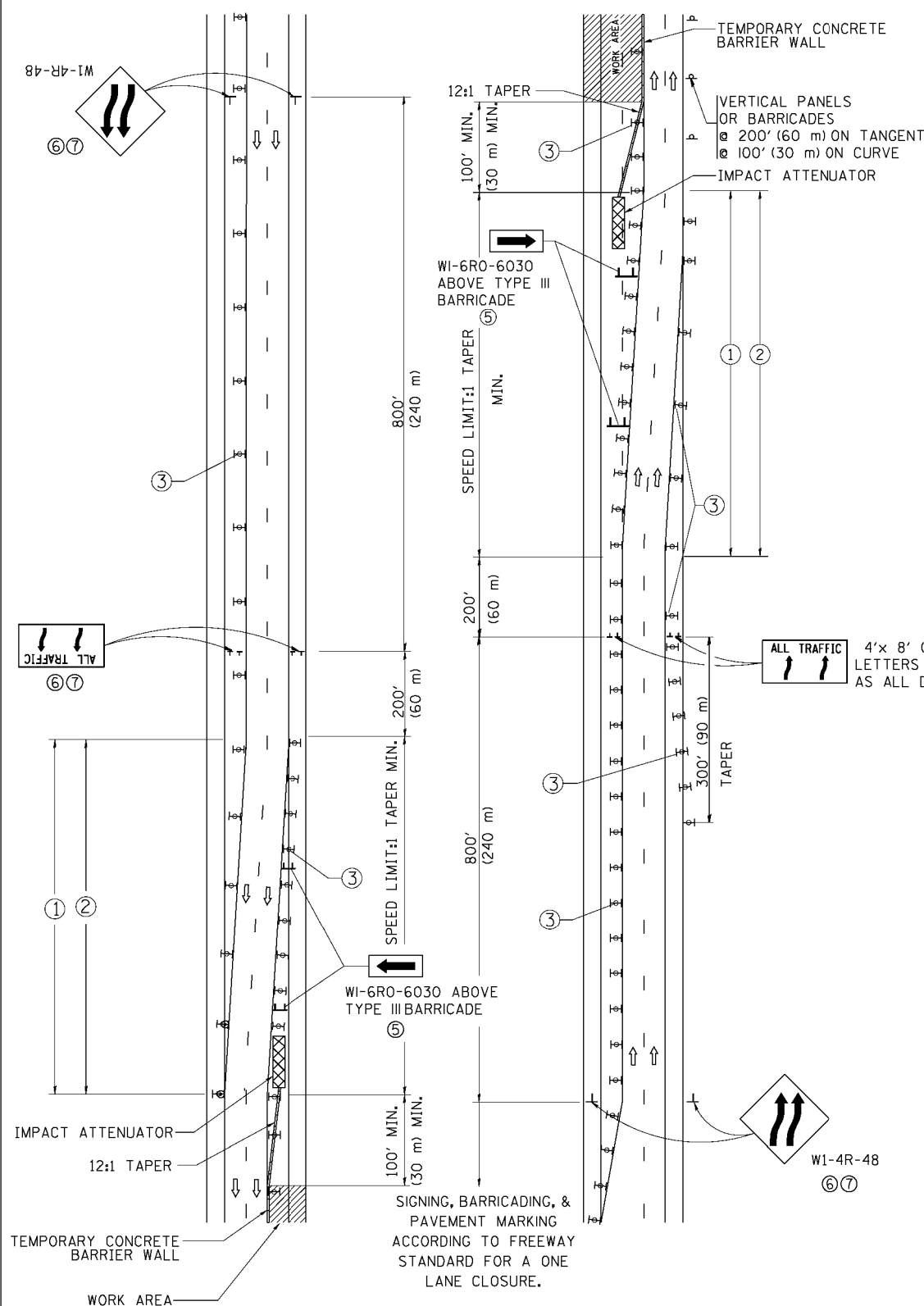
SCALE: NONE SHEET NO. 1 OF 1 SHEETS STA. TO STA.

H.S.B. RTE.	SECTION	COUNTY	TOTAL SHEETS	SHEET NO.
393	2014-0911	COOK	21	15
TC-08			CONTRACT NO. 62A48	
FED. ROAD DIST. NO. 1 ILLINOIS FED. AID PROJECT				

SINGLE LANE WEAVE



MULTI-LANE WEAVE



- ### GENERAL NOTES
- EXISTING CONFLICTING PAVEMENT MARKING LINES SHALL BE REMOVED. PAVEMENT MARKING REMOVAL SHALL NOT BE REQUIRED FOR SINGLE LANE WEAVES UNDER 4 DAYS IN DURATION.
 - CONTINUOUS REFLECTIVE TEMPORARY PAVEMENT MARKING TAPE SHALL BE PLACED THROUGHOUT THE TAPER AND FOR 300' (90 m) ALONG SIDE THE WORK AREA WHERE THE CLOSURE TIME IS GREATER THAN FOURTEEN DAYS. THE LEFT EDGE LINE SHALL BE YELLOW AND THE RIGHT EDGE LINE SHALL BE WHITE. FOR MULTI-LANE WEAVES LANE LINES SHALL BE 5 INCH, 10'-30' (3 m-9 m) SKIP DASH, WHITE.
 - PLASTIC DRUMS WITH STEADY BURN LIGHTS AT 50' (15 m) C-C SPACING IN TAPERS AND 100' (30 m) C-C SPACING IN TANGENTS.
 - ALL SIGNS SHALL BE POST MOUNTED IF THE CLOSURE TIME EXCEEDS FOUR DAYS.
 - TYPE III BARRICADES MAY BE OMITTED FOR SINGLE-LANE WEAVES UNDER 24-HOURS IN DURATION. W1-6 SIGNS WILL STILL BE REQUIRED. IF THE WIDTH OF OFFSET IS LESS THAN 6' THEN THE TYPE III BARRICADE WITH ATTACHED ARROW SIGN PANEL CAN BE ELIMINATED IN THE TAPER AREAS.
 - WHEN THE LENGTH OF THE SHIFTED SEGMENT (DISTANCE BETWEEN WEAVE POINTS) IS LESS THAN 1500', DOUBLE REVERSE CURVE SIGNS (W24-1) SHOULD BE USED INSTEAD OF THE REVERSE CURVE (W1-4) SIGNS. ARROWS ON THE 4'X8' "ALL TRAFFIC" SIGNS SHALL BE THE SAME SHAPE.
 - THE NUMBER OF ARROWS ON THESE SIGNS SHALL MATCH THE NUMBER OF LANES OPEN TO TRAFFIC.

ALL TRAFFIC 4'x 8' (1.2 m x 2.4 m); 1 (25) BORDER; 10 (250) CAPITAL LETTERS BACKGROUND SHEETING SHALL BE THE SAME AS ALL DIAMOND SHAPED CONSTRUCTION SIGNS.

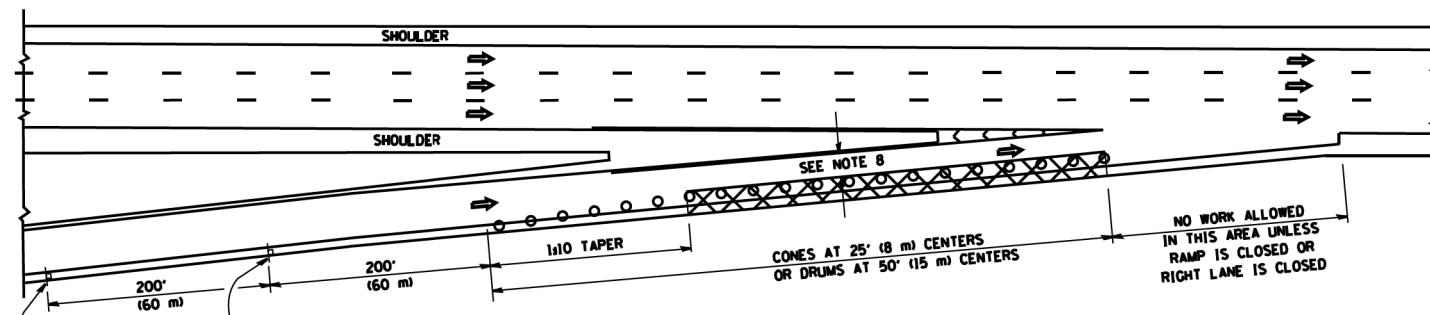
- ### SYMBOLS
- DIRECTION OF TRAFFIC
 - WORK AREA
 - SIGN ON PORTABLE OR PERMANENT SUPPORT
 - TYPE II BARRICADE OR DRUM WITH MONO-DIRECTIONAL STEADY BURNING LIGHT
 - TEMPORARY CONCRETE BARRIER WALL
 - IMPACT ATTENUATOR
 - W1-4R-48 (6, 7)
 - W24-1-48 (7)

ALL DIMENSIONS ARE IN INCHES (MILLIMETERS) UNLESS OTHERWISE SHOWN

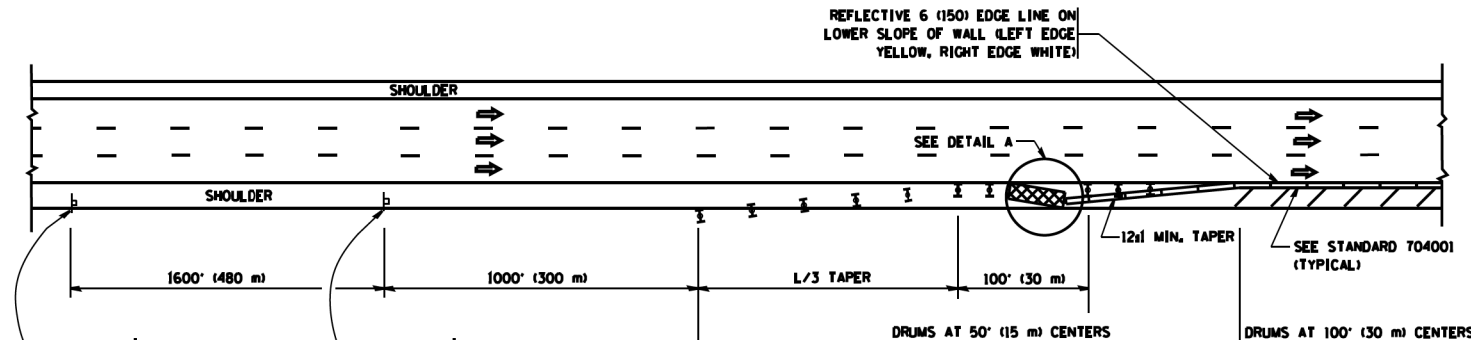
FILE NAME =	USER NAME = footemj	DESIGNED - DWS	REVISED - JAF 02-06	STATE OF ILLINOIS DEPARTMENT OF TRANSPORTATION	TRAFFIC CONTROL DETAILS FOR FREEWAY SINGLE & MULTI-LANE WEAVE	H.S.B. RTE.	SECTION	COUNTY	TOTAL SHEETS	SHEET NO.
ca:\p\work\pwi\dot\Footemj\00108315\td09.dgn	DRAWN -	REVISED - SPB 01-07	393			2014-0911	COOK	21	16	
PLDT SCALE = 50.000' / in.	CHECKED -	REVISED - SPB 12-09	TC-09			CONTRACT NO. 62A48				
PLDT DATE = 7/1/2013	DATE - 02-87	REVISED - MD 06-13	FED. ROAD DIST. NO. 1 ILLINOIS FED. AID PROJECT							
				SCALE: NONE	SHEET NO. 1 OF 1 SHEETS	STA.	TO STA.			

PARTIAL RAMP CLOSURE DETAILS

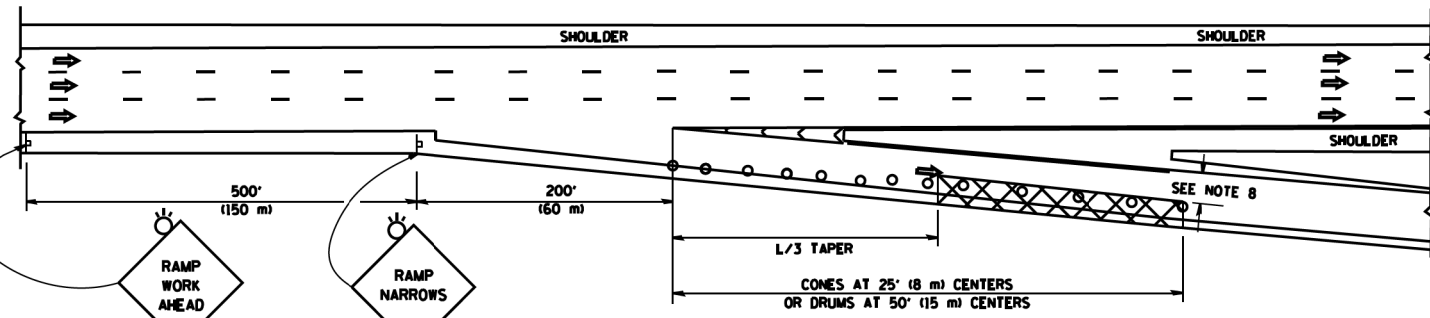
SHOULDER CLOSURE DETAILS



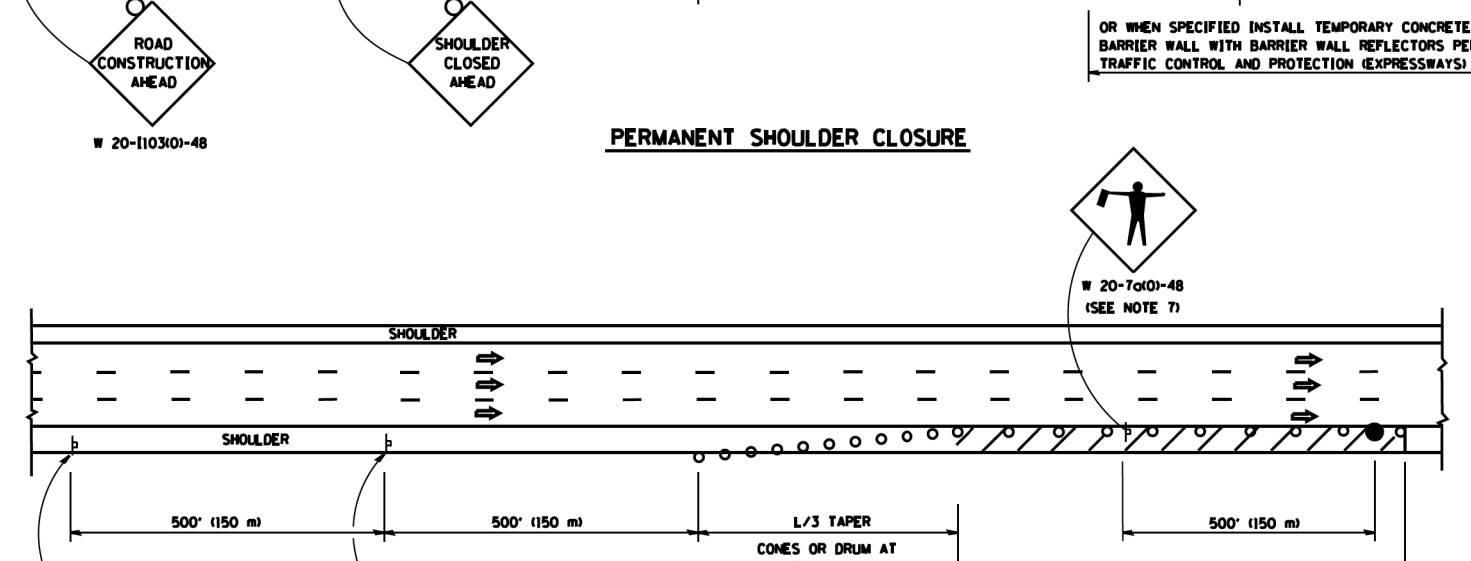
TYPICAL ENTRANCE RAMP



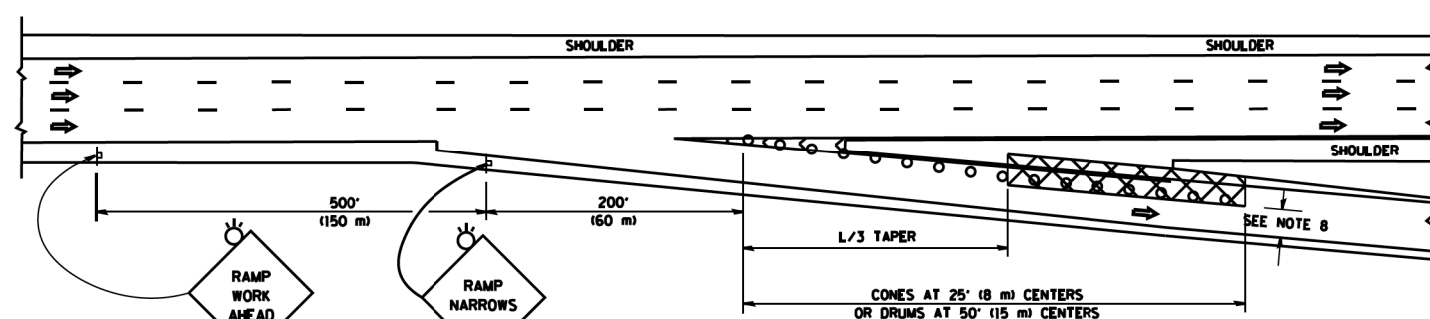
PERMANENT SHOULDER CLOSURE



TYPICAL EXIT RAMP



DAYTIME SHOULDER CLOSURE



TYPICAL EXIT RAMP

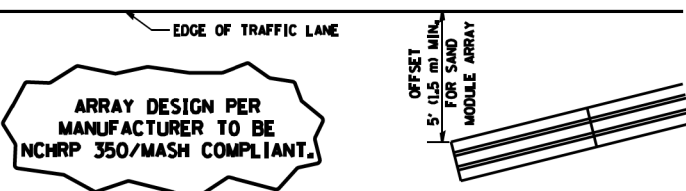
SYMBOLS

- ACTIVE WORK AREA
- SIGN ON PORTABLE OR PERMANENT SUPPORT
- FLAGGER WITH CONTROL SIGN
- TYPE II BARRICADE OR DRUM WITH STEADY BURN MONO-DIRECTIONAL LIGHT
- CONE, DRUM OR BARRICADE
- IMPACT ATTENUATOR OF TYPE AND TEST LEVEL SPECIFIED

GENERAL NOTES

1. THE "L" DISTANCE EQUALS:

SPEED LIMIT	FORMULAS
45 mph (80 km/h) OR GREATER	METRIC ENGLISH L=0.65(WNS) L=(WNS)
W = WIDTH OF OFFSET IN FEET (METERS) S = NORMAL POSTED SPEED MPH (KM/H)	
2. PLASTIC DRUMS WITH HIGH PERFORMANCE REFLECTIVE SHEETING AND STEADY BURNING LIGHTS ARE REQUIRED FOR ALL NIGHTTIME CLOSURES.
3. ALL SIGNS SHALL BE POST MOUNTED IF THE CLOSURE TIME EXCEEDS FOUR DAYS.
4. FLASHING LIGHTS SHALL BE USED DURING THE HOURS OF DARKNESS AND SHALL BE INSTALLED ABOVE THE FIRST TWO SETS OF SIGNS.
5. THE IMPACT ATTENUATOR, TEMPORARY IS NOT REQUIRED WHEN THE TEMPORARY CONCRETE BARRIER WALL IS PROTECTED BY OR IS TIED INTO THE EXISTING GUARDRAIL. IF OFFSET IS LESS THAN 5 FEET USE NARROW USE TYPE DEVICE TO MEET NCHRP350/MASH.
6. AUTHORIZATION FROM THE DISTRICT'S BUREAU OF TRAFFIC IS REQUIRED FOR ALL FREEWAY CLOSURES.
7. THE FLAGGER AND FLAGGER SIGN ARE REQUIRED AT THE ABOVE WORK SITES WHEN:
 - a. FOUR OR MORE WORK VEHICLES ENTER THE TRAFFIC LANES IN A ONE HOUR PERIOD.
 - b. THE WORK ACTIVITY REQUIRES FREQUENT ENCR OACHMENT INTO THE LANE OPEN TO TRAFFIC.
 THE FLAGGER SHALL BE STATIONED APPROXIMATELY 100' (30 m) TO 200' (60 m) IN ADVANCE OF THE WORKERS.
8. 12' MIN. WIDTH TANGENT SECTION
16' MIN. WIDTH CURVE SECTION.



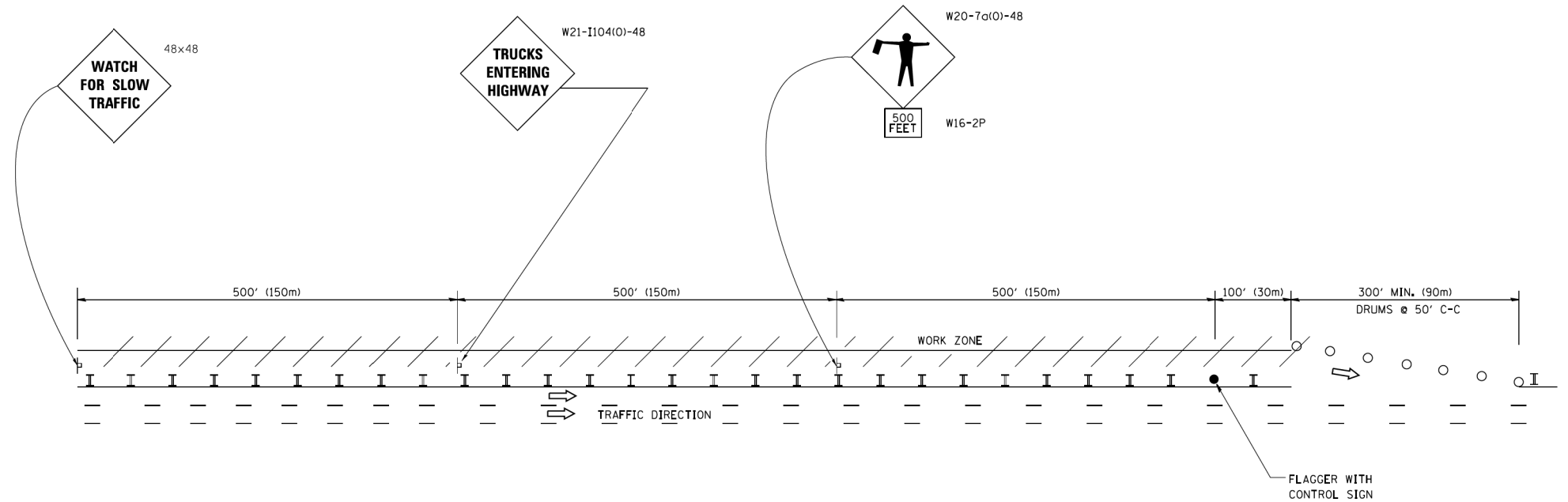
**DETAIL "A"
IMPACT ATTENUATOR, TEMPORARY
(SEE NOTE 5)**

ALL DIMENSIONS ARE IN INCHES (MILLIMETERS) UNLESS OTHERWISE SHOWN.

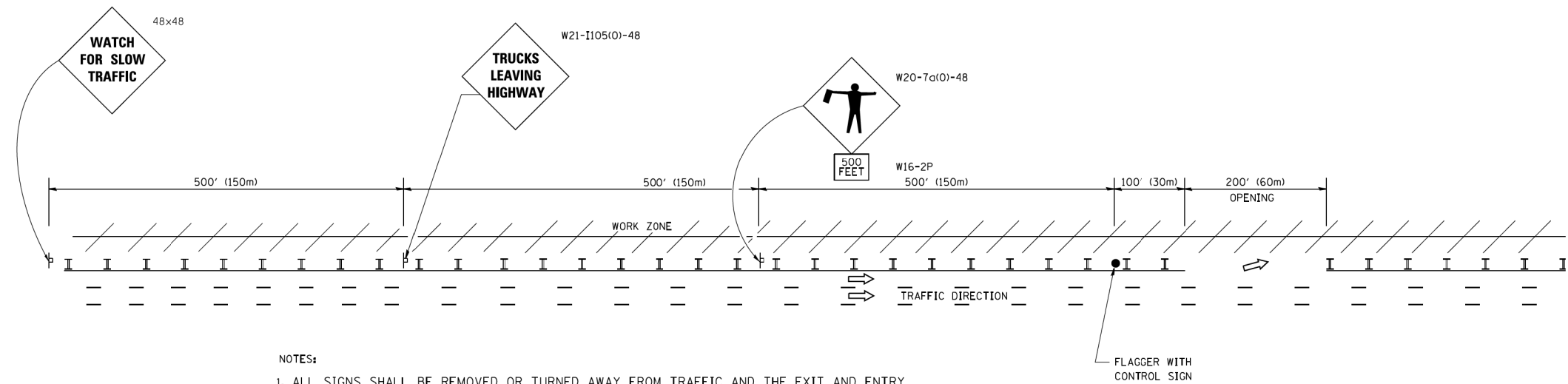
FILE NAME =	USER NAME = lryso	DESIGNED -	REVISED - J.A.F. 12-06	STATE OF ILLINOIS DEPARTMENT OF TRANSPORTATION	TRAFFIC CONTROL DETAILS FOR FREEWAY SHOULDER CLOSURES AND PARTIAL RAMP CLOSURES			H.S.B. RTE.	SECTION	COUNTY	TOTAL SHEETS	SHEET NO.
ca:\pwwork\pwwork\lryso\d0108315\tcl7.dgn		DRAWN - D.W.S.	REVISED - S.P.B. 01-07		393	2014-0911	COOK	21	17			
PLOT SCALE = 100.0000' / 1" =		CHECKED -	REVISED - S.P.B. 12-09		TC-17			CONTRACT NO. 62A48				
PLOT DATE = 4/17/2014		DATE - 11-96	REVISED - M.D. 06-13		SCALE: NONE	SHEET NO. 1 OF 1	SHEETS	STA.	TO STA.	FED. ROAD DIST. NO. 1 ILLINOIS FED. AID PROJECT		

SIGNING FOR FLAGGING OPERATIONS AT WORK ZONE OPENINGS

WORK ZONE EXIT OPENING



WORK ZONE ENTRY OPENING



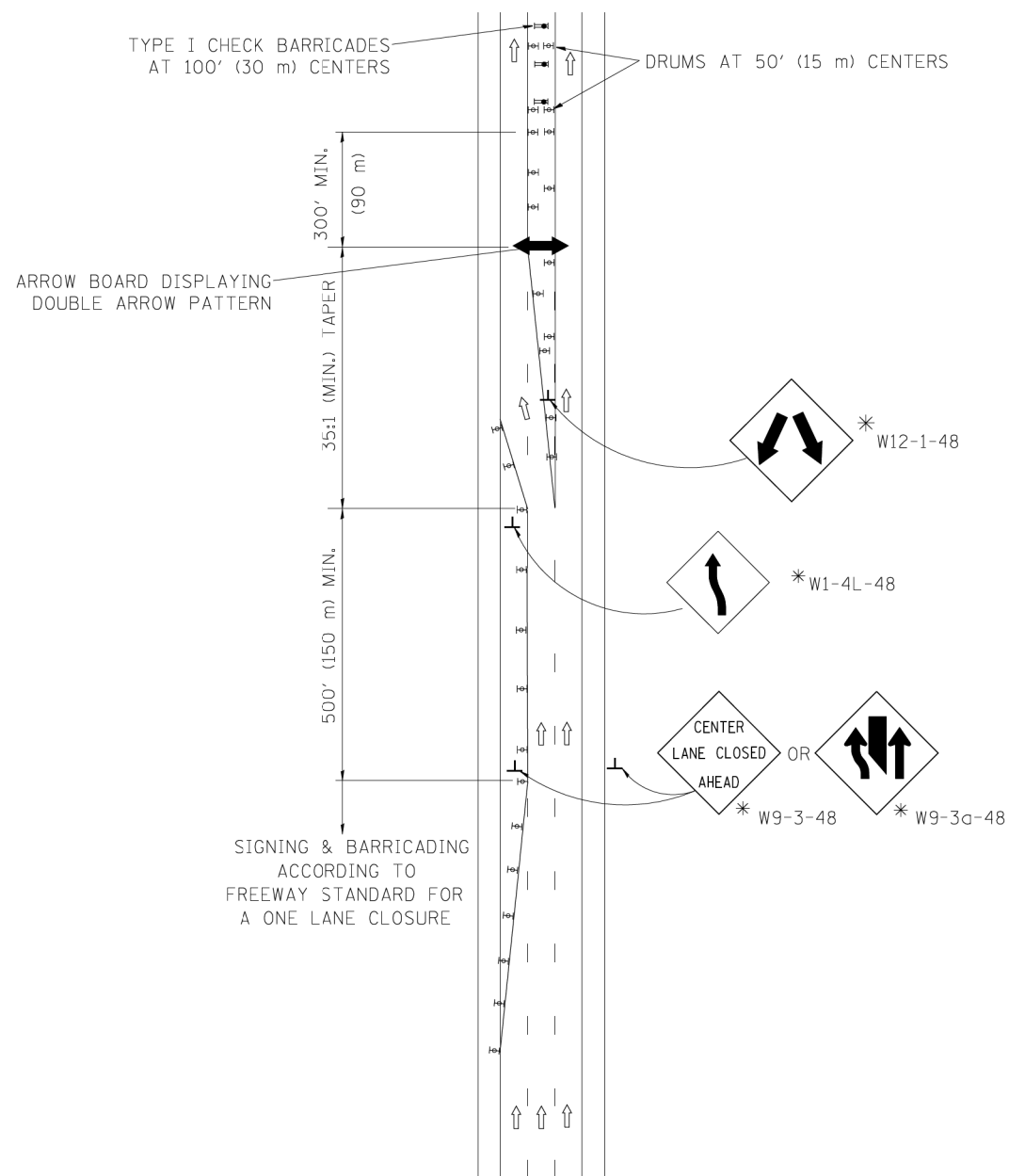
NOTES:

1. ALL SIGNS SHALL BE REMOVED OR TURNED AWAY FROM TRAFFIC AND THE EXIT AND ENTRY OPENINGS SHALL BE CLOSED WHEN THE FLAGGING OPERATION CEASES. NON OPERATING EQUIPMENT SHALL COMPLY WITH ARTICLE 701.11
2. WORK ZONE OPENINGS SHALL BE A MINIMUM OF ONE HALF MILE APART AND A MINIMUM OF ONE QUARTER MILE FROM ALL ENTRANCE AND EXIT RAMPS.
3. EXITING THE WORK ZONE AT ANY PLACE OTHER THAN AT A WORK ZONE EXIT OPENING WILL BE PROHIBITED.
4. ALL VEHICLES SHALL ENTER THE WORK ZONE AT ENTRY OPENINGS, USING THEIR TURN SIGNALS TO WARN MOTORISTS
5. FLAGGERS SHALL NOT STOP TRAFFIC OR DIRECT TRAFFIC INTO AN ADJACENT LANE.

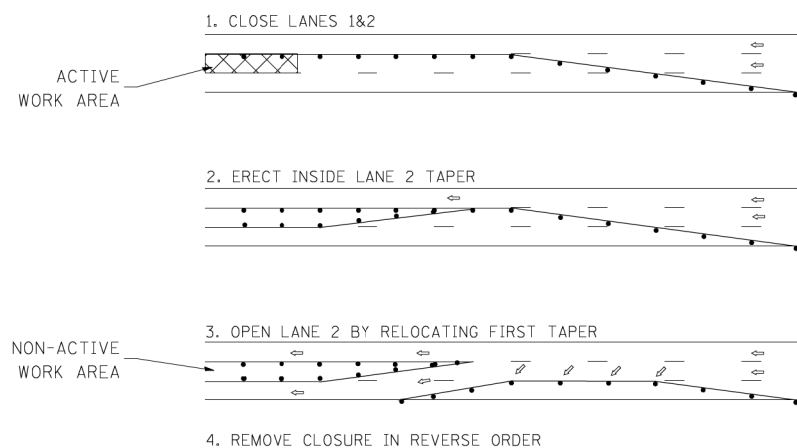
ALL DIMENSIONS ARE IN INCHES (MILLIMETERS) UNLESS OTHERWISE SHOWN

FILE NAME =	USER NAME = footemj	DESIGNED -	REVISED - J.A.F. 02-06	STATE OF ILLINOIS DEPARTMENT OF TRANSPORTATION	FREEWAY/EXPRESSWAY SIGNING FOR FLAGGING OPERATIONS AT WORK ZONE OPENINGS ON FREEWAYS/EXPRESSWAYS	H.S.B. RTE.	SECTION	COUNTY	TOTAL SHEETS	SHEET NO.
ca:\pwork\pwork\footemj\d0108315\tcl18.dgn		DRAWN -	REVISED - S.P.B. 01-07			393	2014-0911	COOK	21	18
		CHECKED -	REVISED - S.P.B. 12-09			TC-18		CONTRACT NO. 62A48		
		DATE -	REVISED - M.D. 06-13			FED. ROAD DIST. NO. 1	ILLINOIS	FED. AID PROJECT		
				SCALE: NONE	SHEET NO. 1 OF 1 SHEETS	STA.	TO STA.			

CENTER LANE CLOSURE



INSTALLATION SEQUENCE

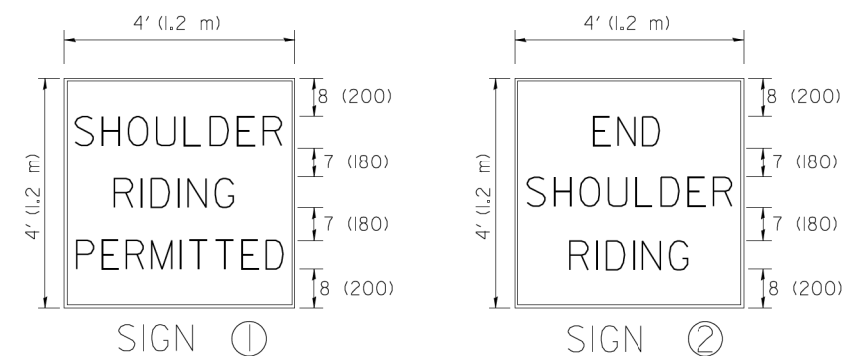
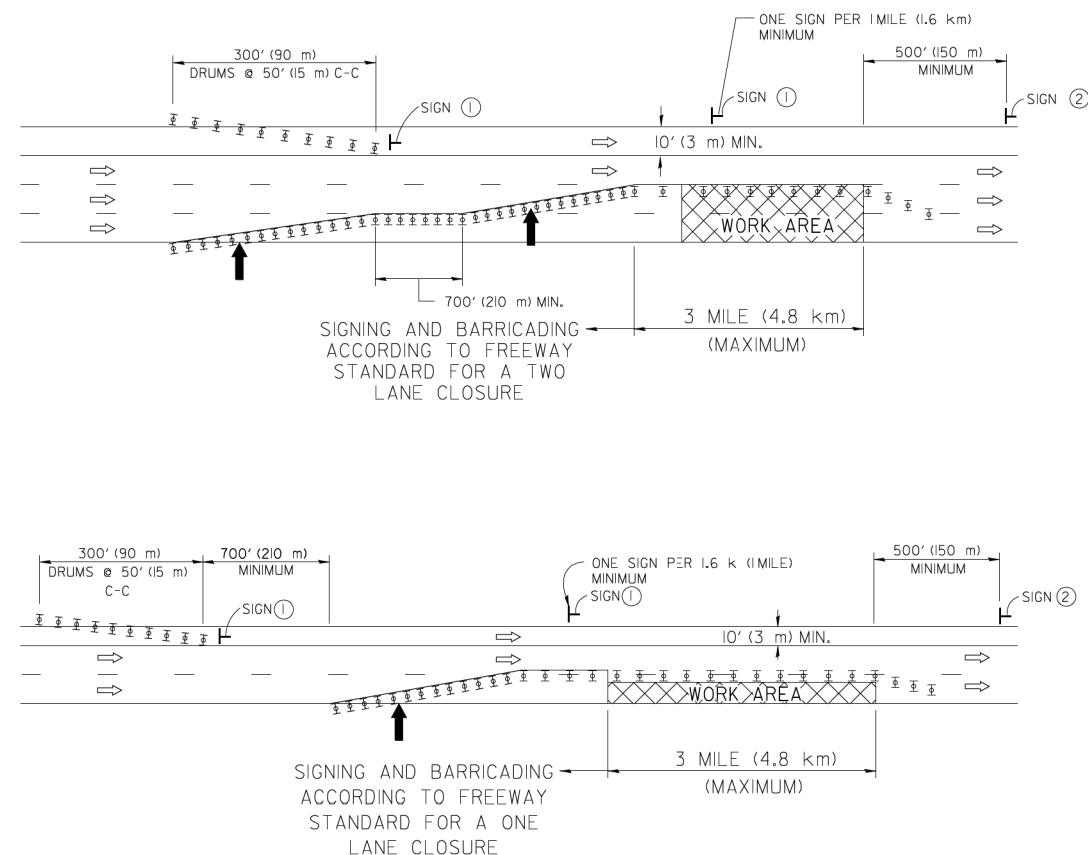


NOTES

1. DRUMS WITH STEADY BURN LIGHTS SHALL BE USED AT 50' (15 m) CENTERS ON ALL TAPERS AND TANGENTS IN ADVANCE OF WORK AREA.
2. CLOSURE SHALL BE USED ONLY FOR OPERATIONS LASTING 72 HOURS OR LESS.
3. CENTER LANE CLOSURE CONFIGURATION IS NOT TO BE USED WITH WORKERS PRESENT.

SHOULDER LANE

NOTE: CLOSURE SHALL BE USED ONLY FOR OPERATIONS LASTING 72 HOURS OR LESS.



6 (150) SERIES "C" LEGEND
BLACK LEGEND
WHITE REFLECT. BACKGROUND
1 (25) BORDER

SYMBOLS

- ↑ DIRECTION OF TRAFFIC
- ➡ ARROWBOARD
- ▣ ACTIVE WORK AREA
- ⊥ SIGN ON PORTABLE OR PERMANENT SUPPORT *
- ⊥ TYPE II BARRICADE, OR DRUM WITH MONO-DIRECTIONAL STEADY BURN LIGHT

ALL DIMENSIONS ARE IN INCHES (MILLIMETERS) UNLESS OTHERWISE SHOWN

* ALL SIGNS SHALL BE MOUNTED AT A MINIMUM HEIGHT OF 5' (1.5 m).

FILE NAME = W:\dststd\22x34\c25.dgn	USER NAME = leysa	DESIGNED -	REVISED - J.A.F. 04-03
		DRAWN -	REVISED - S.P.B. 01-07
		CHECKED -	REVISED - S.P.B. 12-09
		DATE -	REVISED -

STATE OF ILLINOIS
DEPARTMENT OF TRANSPORTATION

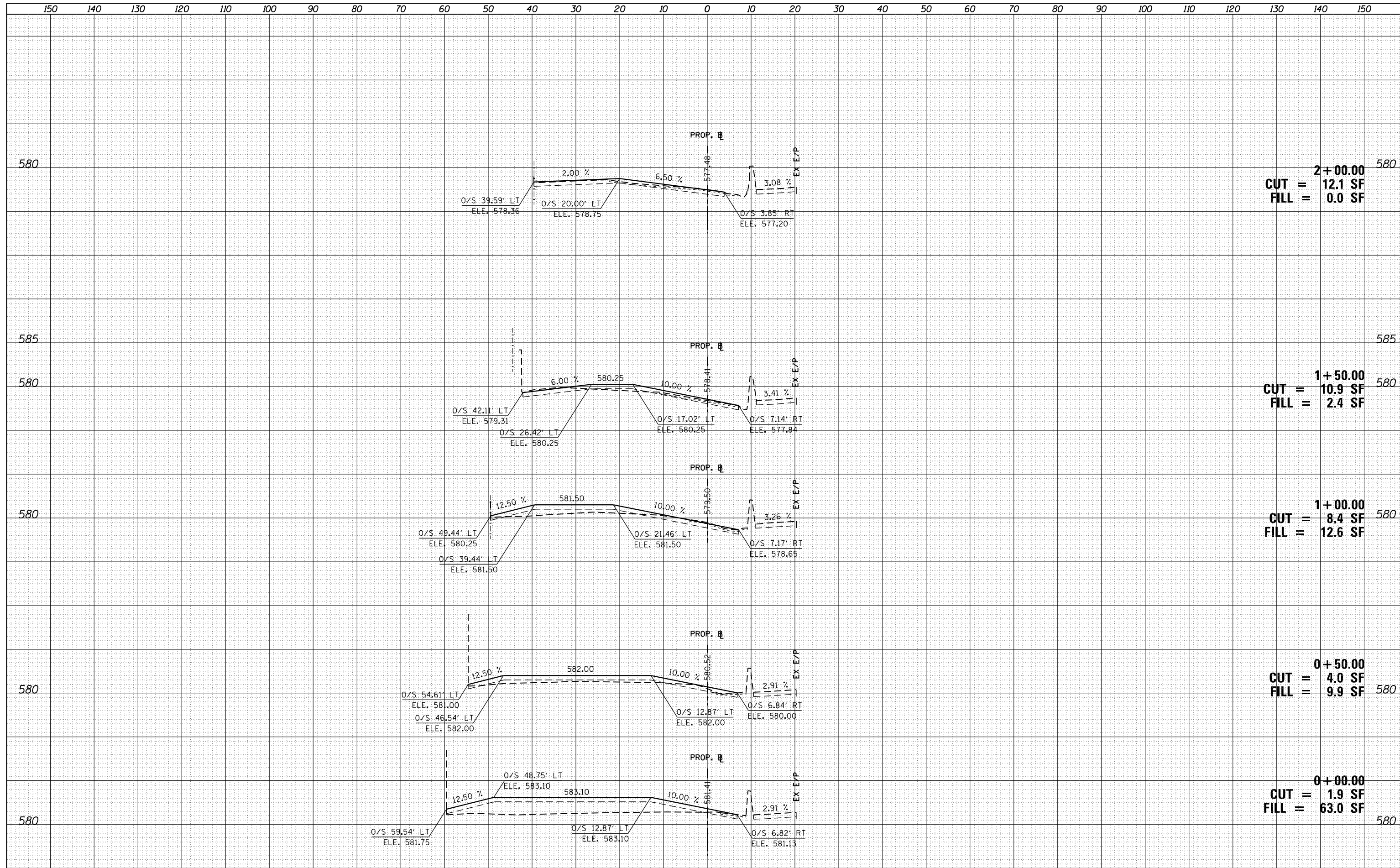
TRAFFIC CONTROL DETAILS FOR FREEWAY
CENTER LANE CLOSURE SHOULDER LANE

SCALE: NONE SHEET NO. 1 OF 1 SHEETS STA. TO STA.

H.S.B. RTE. 393	SECTION 2014-0911	COUNTY COOK	TOTAL SHEETS 21	SHEET NO. 19
TC-25		CONTRACT NO. 62A48		
FED. ROAD DIST. NO. 1 ILLINOIS FED. AID PROJECT				

DATE	
BY	
FINAL SURVEY	
NOTE BOOK NO.	
SURVEYED	
PLOTTED	
TEMPLATE AREAS CHECKED	

DATE	
BY	
ORIGINAL SURVEY	
NOTE BOOK NO.	
SURVEYED	
PLOTTED	
TEMPLATE AREAS CHECKED	



2+00.00
 CUT = 12.1 SF
 FILL = 0.0 SF

1+50.00
 CUT = 10.9 SF
 FILL = 2.4 SF

1+00.00
 CUT = 8.4 SF
 FILL = 12.6 SF

0+50.00
 CUT = 4.0 SF
 FILL = 9.9 SF

0+00.00
 CUT = 1.9 SF
 FILL = 63.0 SF



USER NAME = Kjtac
 DESIGNED - KJC
 DRAWN - KJC
 CHECKED - LVA
 DATE - 04/07/15

REVISED -
 REVISED -
 REVISED -
 REVISED -

STATE OF ILLINOIS
 DEPARTMENT OF TRANSPORTATION

HSB RTE 393: CHINATOWN FEEDER UNDER I-90 /94
 CROSS SECTIONS

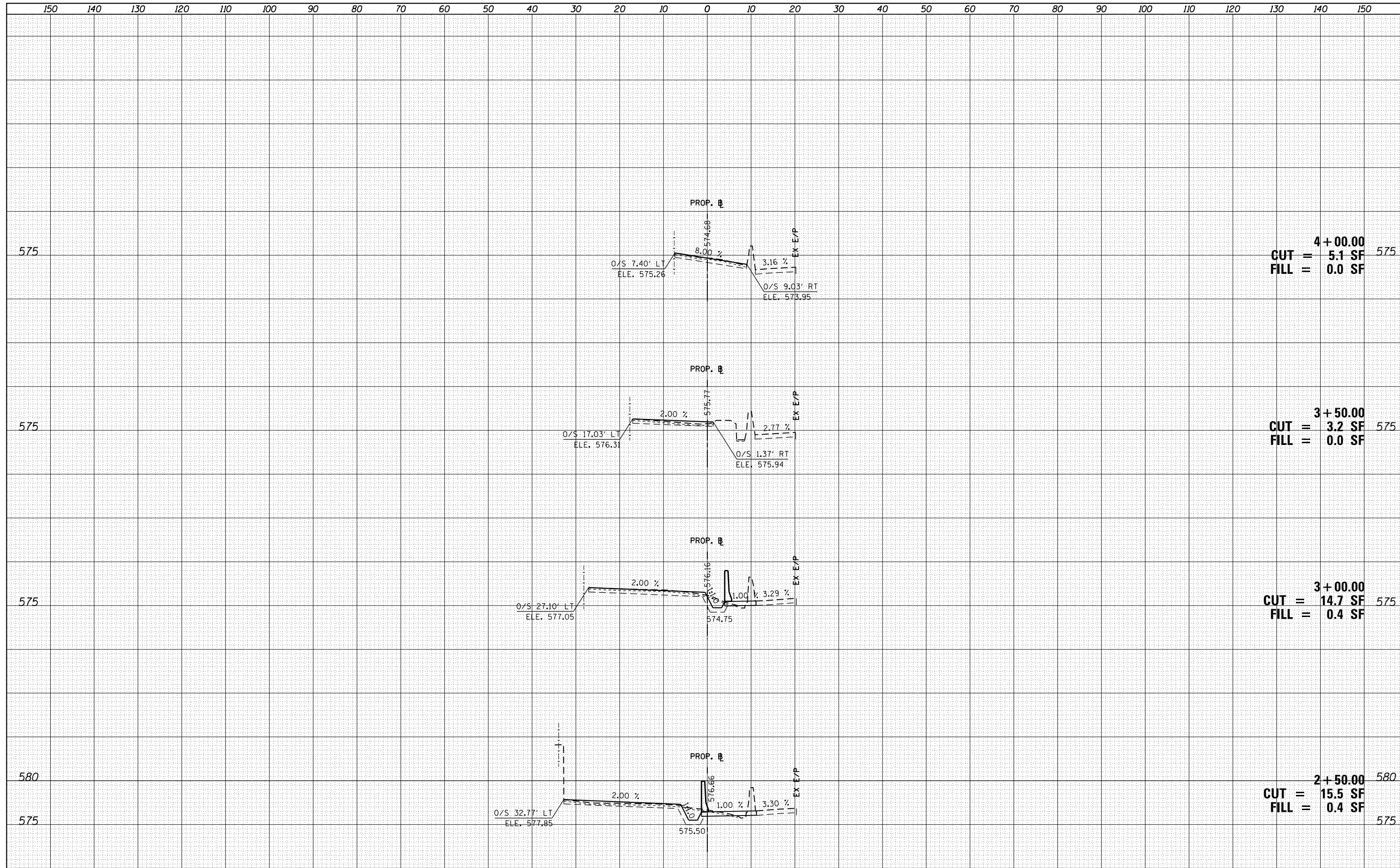
SCALE: 1" = 10' SHEET 1 OF 2 SHEETS STA. 0+00.00 TO STA. 2+00.00

H.S.B. RTE.	SECTION	COUNTY	TOTAL SHEETS	SHEET NO.
393	2014-0911	COOK	21	20
CONTRACT NO. 62A48				

ILLINOIS FED. AID PROJECT

DATE	
BY	
SURVEYED	
PLOTTED	
TEMPLATE	
AREAS	
CHECKED	
NO.	

DATE	
BY	
SURVEYED	
PLOTTED	
TEMPLATE	
AREAS	
CHECKED	
NO.	



575
CUT = 4 + 00.00
FILL = 5.1 SF
0.0 SF 575

575
CUT = 3 + 50.00
FILL = 3.2 SF
0.0 SF 575

575
CUT = 3 + 00.00
FILL = 14.7 SF
0.4 SF 575

580
CUT = 2 + 50.00
FILL = 15.5 SF
0.4 SF 575