

STATE OF ILLINOIS
 DEPARTMENT OF TRANSPORTATION
 DIVISION OF HIGHWAYS
**PROPOSED
 HIGHWAY PLANS**

LA GRANGE WETLAND BANK
 D-6 WETLAND MITIGATION 7

BROWN COUNTY
 C-96-054-09

F.A. RTE.	SECTION	COUNTY	TOTAL SHEETS	SHEET NO.
*	**	BROWN	5	1
ILLINOIS CONTRACT NO. 72972				

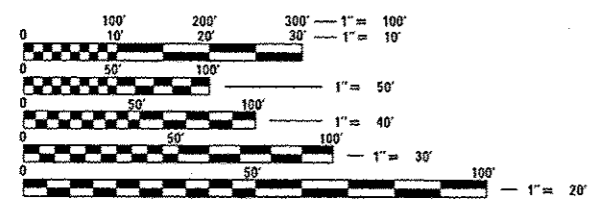
* LA GRANGE WETLAND BANK
 ** D-6 WETLAND MITIGATION 7

SHEET NO. DESCRIPTION

1	COVER SHEET
2	GENERAL NOTES & COMMITMENTS
3	SUMMARY OF QUANTITIES
4	GENERAL PLAN VIEW
5	DETAILS

LIST OF STANDARDS

000001-06

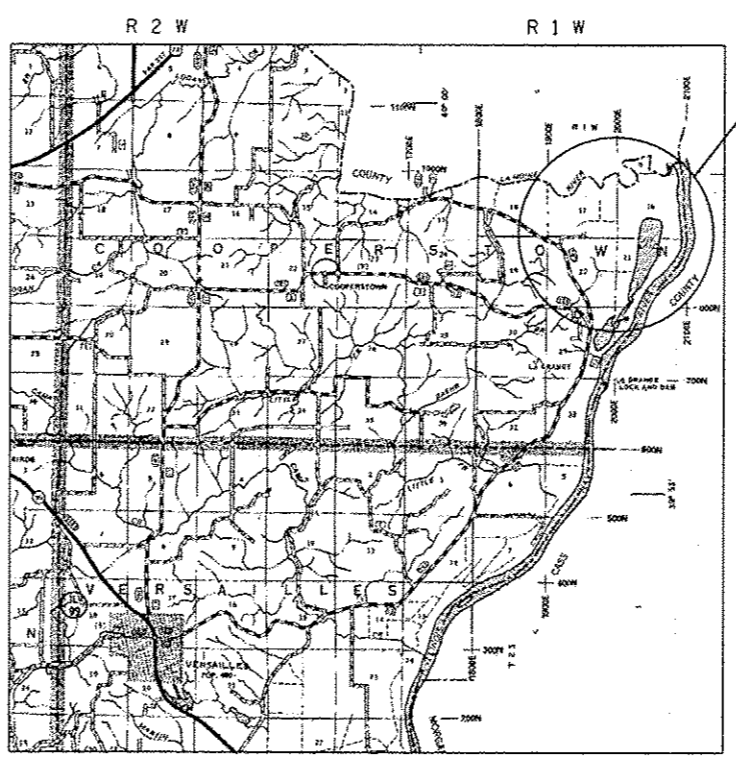


FULL SIZE PLANS HAVE BEEN PREPARED USING STANDARD ENGINEERING SCALES. REDUCED SIZED PLANS WILL NOT CONFORM TO STANDARD SCALES. IN MAKING MEASUREMENTS ON REDUCED PLANS, THE ABOVE SCALES MAY BE USED.

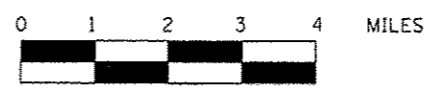
J.U.L.I.E.
 JOINT UTILITY LOCATION INFORMATION FOR EXCAVATION
 1-800-892-0123
 OR 811

PROJECT ENGINEER: JAY EDWARDS 217-785-0597

CONTRACT NO. 72972



LOCATION MAP



LA GRANGE WETLAND BANK
 PR IMPROVEMENT
 CONSIST OF:
 TREE PLANTING
 (SEE DETAILED
 SITE MAP ON
 SHEET NO. 4)



LOCATION OF SECTION INDICATED THUS: - [black rectangle] -

STATE OF ILLINOIS
 DEPARTMENT OF TRANSPORTATION
 DIVISION OF HIGHWAYS

SUBMITTED MAVIS 20 15

Egon Z. D... PE, JR.
 DEPUTY DIRECTOR OF HIGHWAYS, REGION ENGINEER

June 26 20 15
John D. Baranzelli, PE, JR.
 acting ENGINEER OF DESIGN AND ENVIRONMENT

June 26 20 15
Cher Oemam, PE, JR.
 DIRECTOR OF HIGHWAYS, CHIEF ENGINEER

PRINTED BY THE AUTHORITY
 OF THE STATE OF ILLINOIS

GENERAL NOTES

- 1) ALL ELEVATION REFER TO USGS MEAN SEA LEVEL DATUM.
- 2) WHERE SECTION OR SUBSECTION MONUMENTS ARE ENCOUNTERED, THE ENGINEER SHALL BE NOTIFIED BEFORE SUCH MONUMENTS ARE REMOVED. THE CONTRACTOR SHALL PROTECT AND CAREFULLY PRESERVE ALL PROPERTY MARKERS AND MONUMENTS UNTIL THE OWNER AND AUTHORIZED SURVEYOR OR AGENT HAS WITNESSED OR OTHERWISE REFERENCED THEIR LOCATION. IF THE ENGINEER DECIDES TO HAVE THE CONTRACTOR RESET THE MONUMENT, THIS WORK WILL BE PAID FOR IN ACCORDANCE WITH ARTICLE 109.04.
- 3) THE CONTRACTOR SHALL CONTACT J.U.L.I.E. PRIOR TO ANY EXCAVATION TO HAVE ALL PUBLIC AND PRIVATE UTILITIES LOCATED.
- 4) THE CONTRACTOR SHALL BE RESPONSIBLE FOR PROTECTING UTILITY PROPERTY FROM CONSTRUCTION OPERATIONS AS OUTLINED IN ARTICLE 107.26 OF THE STANDARD SPECIFICATIONS. THE J.U.L.I.E. NUMBER IS (800) 892-0123. A MINIMUM OF 48 HOURS ADVANCE NOTICE IS REQUIRED. SEE SPECIAL PROVISIONS FOR STATUS OF UTILITIES, WITH UTILITY COMPANIES LISTED.
- 5) ANY REFERENCE TO THE STANDARDS THROUGHOUT THE PLANS SHALL BE INTERPRETED TO BE THE LATEST STANDARDS OF THE DEPARTMENT AS INCLUDED IN THE PLANS.
- 6) ALL DETAILS IN THE PLANS SHALL GOVERN CONSTRUCTION OF THIS PROJECT, AND IN CASE OF CONFLICT WITH ANY STANDARD DRAWINGS INCLUDED, THE SAID DETAILS SHALL TAKE PRECEDENCE AND GOVERN.
- 7) THE ONLY PERMANENT SEEDING THAT SHALL BE COMPLETED IN THIS CONTRACT IS SEEDING, CLASS 2, AS DIRECTED BY THE ENGINEER. OTHER AREAS WILL BE NATURALLY REVEGITATED. WE DO NOT WANT TEMPORARY SEEDING (HEAVY APPLICATIONS) OR PERMANENT SEEDING TO INTERFERE WITH THE NATURAL REVEGITATION PROCESS OF THE PROPOSED WETLAND AREAS.
- 8) DISTURBANCE TO THE SITE SHALL BE KEPT TO A MINIMUM OUTSIDE THE SHOWN CONSTRUCTION LIMITS. VEHICLES AND EQUIPMENT SHALL BE PARKED WITHIN THE PROPOSED WORK AREAS OR AT THE EXISTING BUILDING LOCATION (AT THE SW CORNER OF THE SITE NEAR THE TOWNSHIP ROAD) WHEN NOT IN USE. WE DO NOT WANT THE EXISTING WETLAND VEGETATION DISTURBED OUTSIDE THE CONSTRUCTION LIMITS. IF THE CONTRACTOR FAILS TO KEEP HIS/HER WORKERS FROM OBEYING THE ABOVE REQUIREMENT, THE RESIDENT ENGINEER WILL DETERMINE AND DEDUCT AGREED DAMAGES OF \$2,000 PER OCCURANCE FROM THE FINAL PAYMENT (PAY ESTIMATE TO DATE) AS PART OF THE UNDERSTANDING IN THIS CONTRACT.

COMMITMENTS

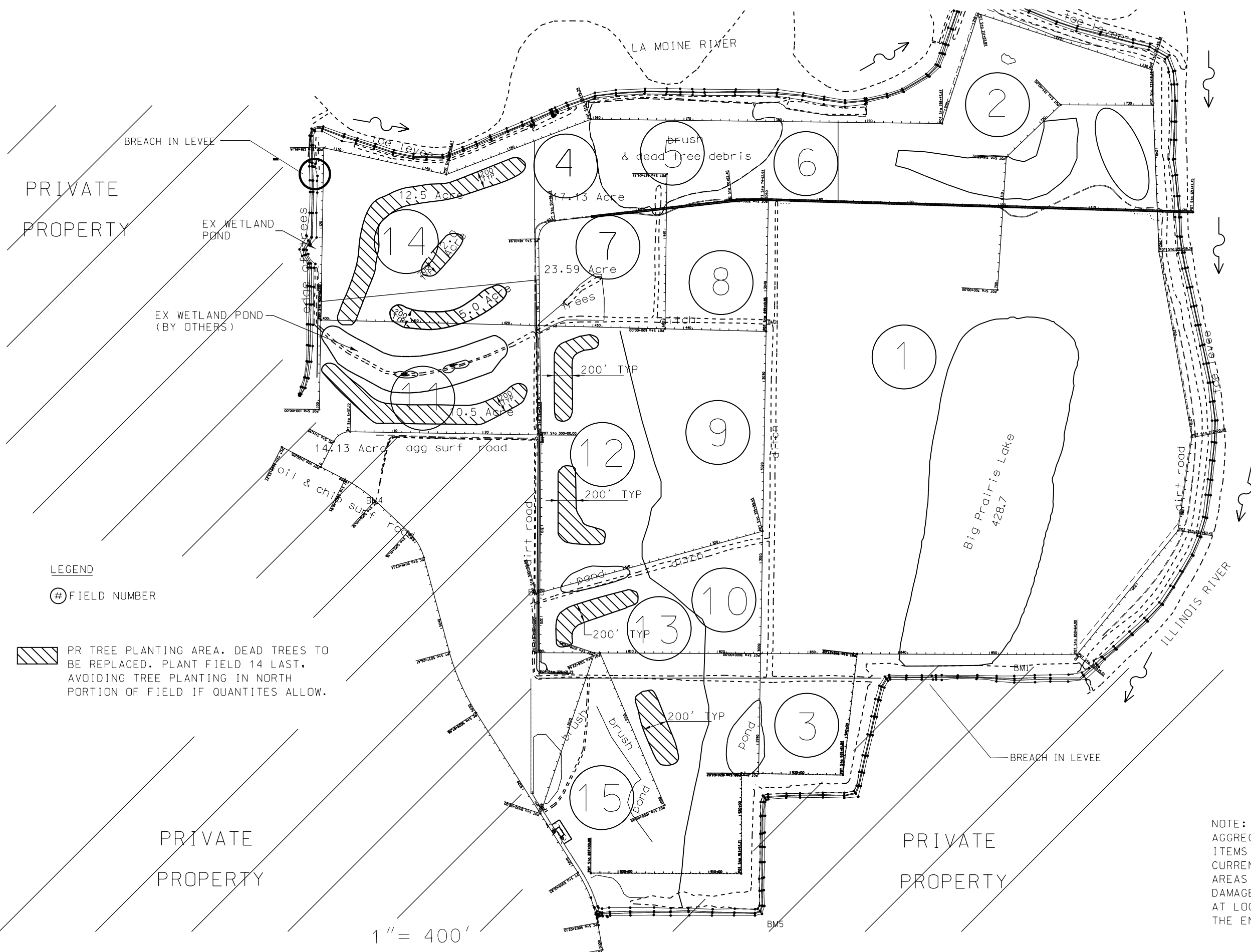
- 1) THE FIELD/RESIDENT ENGINEER SHALL CONTACT STUDIES & PLANS CONCERNING ANY MAJOR PLAN CHANGES TO MAKE SURE NO COMMITMENTS (NOT LISTED) WERE MADE AFFECTING THE DESIGN, AND ALLOW IMPROVEMENTS IN THE DESIGN FOR FUTURE PROJECTS.
- 2) APPROVED WETLAND MITIGATION PLAN.
- 3) DISTURBANCE TO THE SITE SHALL BE KEPT TO A MINIMUM.

DISTRICT SIX	
EXAMINED	May 13 th 20 15
<i>John C. Wenzel</i>	
OPERATIONS ENGINEER	
EXAMINED	May 14 20 15
<i>Ron Archambault</i>	
PROJECT IMPLEMENTATION ENGINEER	
EXAMINED	May 13 20 15
<i>Adrian P. Meyer</i>	
PROGRAM DEVELOPMENT ENGINEER	

FILE NAME =	USER NAME = sponksg	DESIGNED -	REVISED -	STATE OF ILLINOIS DEPARTMENT OF TRANSPORTATION	GENERAL NOTES	F.A. RTE.	SECTION	COUNTY	TOTAL SHEETS	SHEET NO.
pa\11084E810INTEG.illinois.gov\PI\DOT\Do	uments\DOT Offices\District 6\Projects\Bro	OBANN, Wetland Bank\0672972 07\0400a	REVISED			*	**	BROWN	5	2
Default	PLOT SCALE = 100.0000 ' / in.	CHECKED -	REVISED -		SCALE:					
	PLOT DATE = 5/15/2015	DATE -	REVISED -		SHEET	OF	SHEETS	STA.	TO STA.	ILLINOIS FED. AID PROJECT
* LA GRANGE WETLAND BANK ** D6 WETLAND MITIGATION NO. 7										

SUMMARY OF QUANTITIES				CONSTR. CODE	
				6-00336-0200	
				100% STATE	
CODE NO.	ITEM	UNIT	TOTAL QUANTITY	0020	
25000200	SEEDING, CLASS 2	ACRE	0.9	0.9	
25000400	NITROGEN FERTILIZER NUTRIENT	POUND	81	81	
25000500	PHOSPHORUS FERTILIZER NUTRIENT	POUND	81	81	
25000600	POTASSIUM FERTILIZER NUTRIENT	POUND	81	81	
25100115	MULCH, METHOD 2	ACRE	0.9	0.9	
40200800	AGGREGATE SURFACE COURSE, TYPE B	TON	700	700	
67100100	MOBILIZATION	LSUM	1	1	
A2C040G3	TREE, PLATANUS OCCIDENTALIS (SYCAMORE), CONTAINER GROWN, 3-GALLON	EACH	350	350	
A2C050G3	TREE, QUERCUS BICOLOR (SWAMP WHITE OAK), CONTAINER GROWN, 3-GALLON	EACH	260	260	
A2C060G3	TREE, QUERCUS PALUSTRIS (PIN OAK), CONTAINER GROWN, 3-GALLON	EACH	200	200	
K0026700	TREE CARE	EACH	3	3	
K0026720	TREE INTERMEDIATE AND SHRUB WATERING	UNIT	20	20	
X2503000	MAINTENANCE MOWING	ACRE	103.3	103.3	
14 A2006821	TREE, QUERCUS LYRATA (OVERCUP OAK), CONTAINER GROWN, 3-GALLON	EACH	140	140	

FILE NAME =	USER NAME = adwrdajd	DESIGNED -	REVISED -	STATE OF ILLINOIS DEPARTMENT OF TRANSPORTATION		SUMMARY OF QUANTITIES		F.A. RTE.	SECTION	COUNTY	TOTAL SHEETS	SHEET NO.
Default	Default	CHECKED -	REVISED -					SCALE:	SHEET OF	SHEETS	STA. TO STA.	BROWN
PLOT SCALE * 100.0000' / in. PLOT DATE * 5/15/2015				DATE -		CONTRACT NO. 72972		ILLINOIS FED. AID PROJECT * LA GRANGE WETLAND BANK ** 06 WETLAND MITIGATION NO. 7				



LEGEND

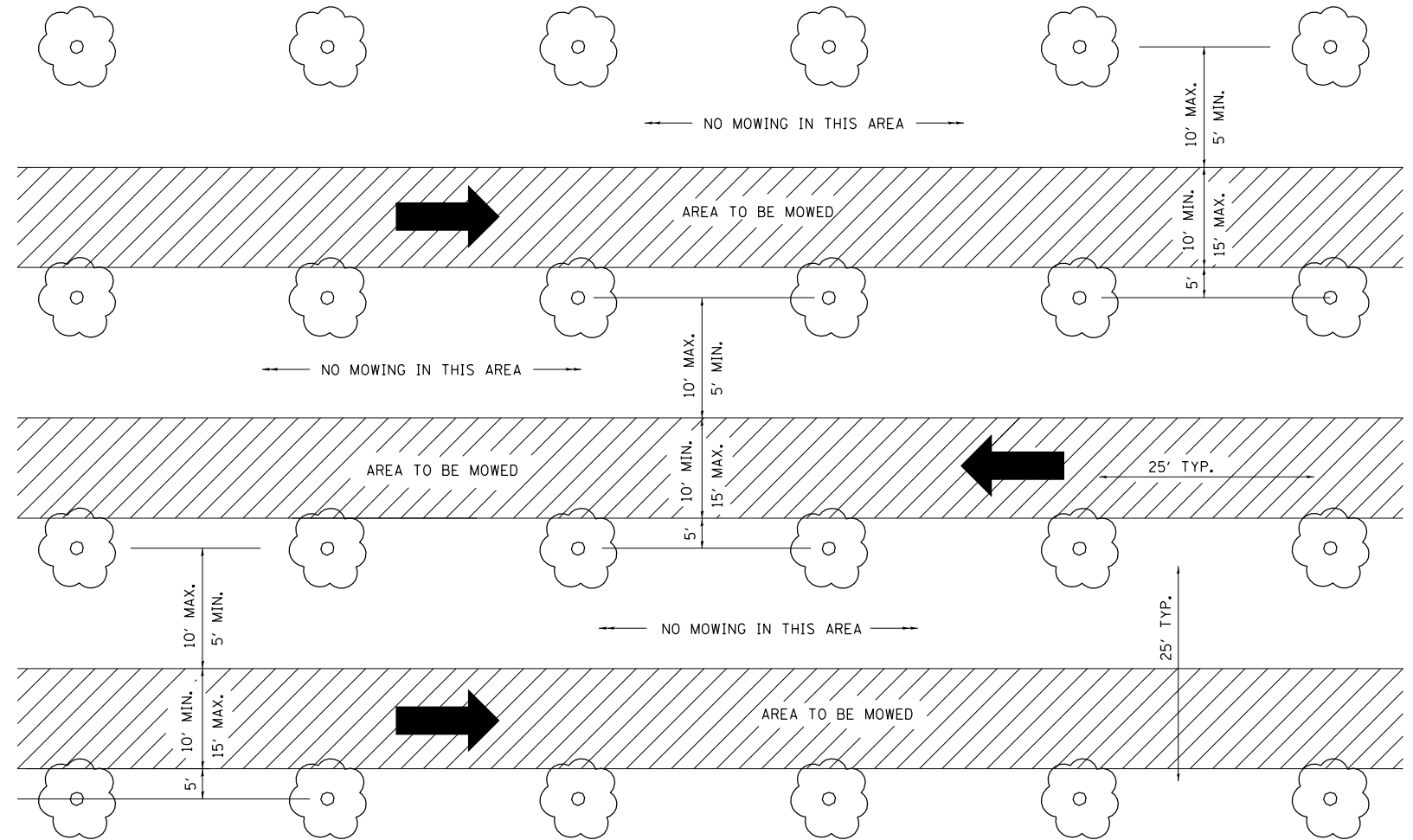
⊕ FIELD NUMBER

PR TREE PLANTING AREA. DEAD TREES TO BE REPLACED. PLANT FIELD 14 LAST, AVOIDING TREE PLANTING IN NORTH PORTION OF FIELD IF QUANTITIES ALLOW.

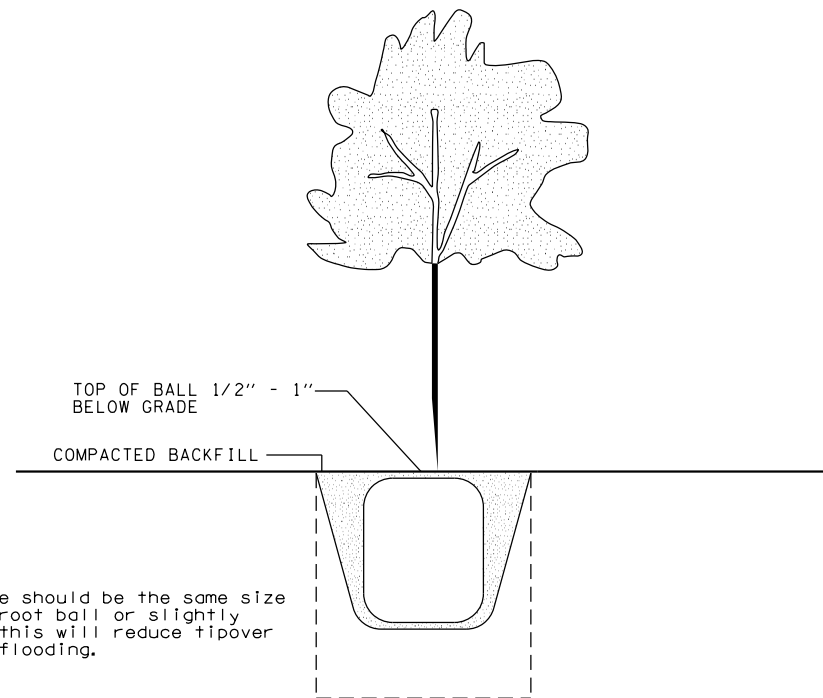
NOTE:
 AGGREGATE AND SEEDING ITEMS ARE FOR REPAIRING CURRENT AND FUTURE WASHOUT AREAS WHERE HIGH WATER HAS DAMAGED ROADWAYS IN WETLAND, AT LOCATIONS AS DIRECTED BY THE ENGINEER.

FILE NAME =	USER NAME = spksgw	DESIGNED -	REVISED -	STATE OF ILLINOIS DEPARTMENT OF TRANSPORTATION	LA GRANGE WETLAND BANK GENERAL PLAN VIEW	F.A. RTE.	SECTION	COUNTY	TOTAL SHEETS	SHEET NO.
Default	pw\1\084EBIDINTEG.illinois.gov\PIWIDOT\Documents\IDOT Offices\District 6\Projects\Brown Wetland Bank\0672972 C7\CAD\Drawings\shplan_overview.dgn	DRAWN -	REVISED -			.	..	BROWN	5	4
	PLOT SCALE = 1060.0000 "/> <td>CHECKED -</td> <td>REVISED -</td> <td colspan="6" style="text-align: center;">CONTRACT NO. 72972</td>	CHECKED -	REVISED -			CONTRACT NO. 72972				
	PLOT DATE = 5/15/2015	DATE -	REVISED -	SCALE: SHEET OF SHEETS STA. TO STA.		ILLINOIS FED. AID PROJECT				

TYPICAL MAINTENANCE PATTERN



TYPICAL CONTAINER TREE PLANNING PLAN



NOTE: VEGETATION SHALL BE MOWED IN A NORTH/SOUTH OR EAST/WEST PATTERN. AREAS SHALL BE MOWED IN "ONE" DIRECTION ONLY AND MOWED PATHS SHALL BE PARALLEL AS DIRECTED BY THE ENGINEER.

CROSS MOWING WILL NOT BE PERMITTED.

FILE NAME =	USER NAME = sparksgr	DESIGNED -	REVISED -	STATE OF ILLINOIS DEPARTMENT OF TRANSPORTATION	DETAILS			F.A. RTE.	SECTION	COUNTY	TOTAL SHEETS	SHEET NO.
pw:\IL\084EBIDINTEG\Illinois.gov\PI\DOT\Documents\DOT Offices\District 6\Projects\Brown Wetland Bank\0672972 C7\CA00\Details\Details.dgn	DRAWN -	REVISED -	REVISED -								5	5
Default	PLOT SCALE = 100.0000' / in.	CHECKED -	REVISED -		SCALE:	SHEET	OF	SHEETS	STA.	TO STA.	ILLINOIS FED. AID PROJECT	CONTRACT NO. 72972
	PLOT DATE = 5/15/2015	DATE -	REVISED -		• LA GRANGE WETLAND BANK •• D6 WETLAND MITIGATION NO. 7							