

STATE OF ILLINOIS
DEPARTMENT OF TRANSPORTATION
DIVISION OF HIGHWAYS

**PROPOSED
HIGHWAY PLANS**

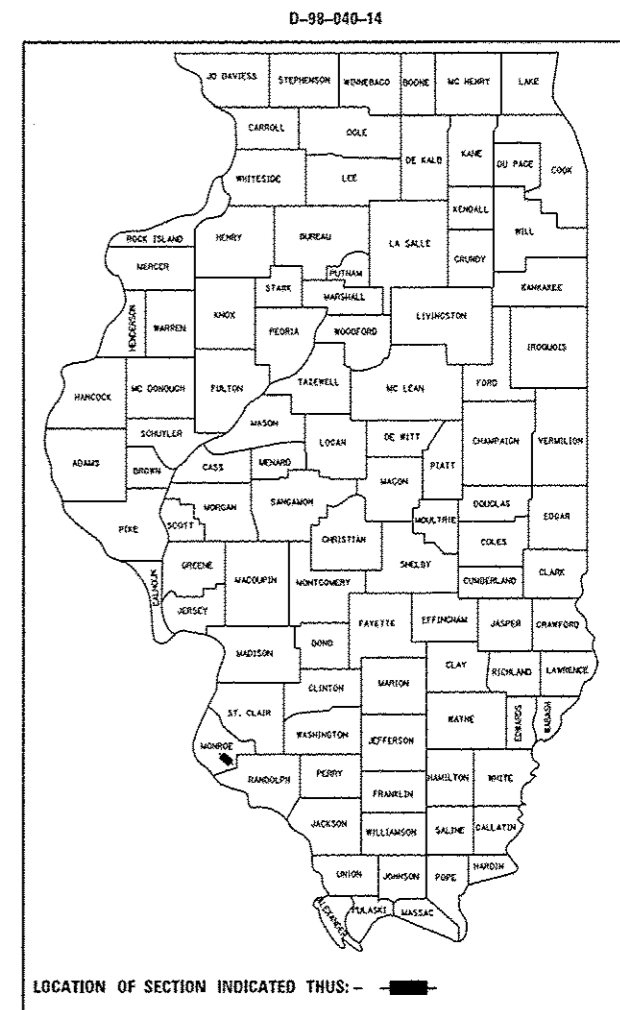
FAP ROUTE 312 (IL 3)
SECTION (69, 70)RS-3

PATCHING, RESURFACING
AND GUARDRAIL REPLACEMENT
MONROE COUNTY
C-98-041-14

F.A.P. RTE.	SECTION	COUNTY	TOTAL SHEETS	SHEET NO.
312	(69,70)RS-3	MONROE	21	1
		ILLINOIS	CONTRACT NO. 76H16	

FOR INDEX OF SHEETS, SEE SHEET NO. 2

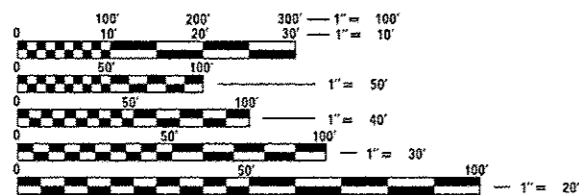
AADT: IL 3 - 10,600(2015)/13,500(2035) MU = 9.0% SU = 5.5%



END PROJECT
STA. 1966+46
LAT: 38.307612
LONG: -90.145988

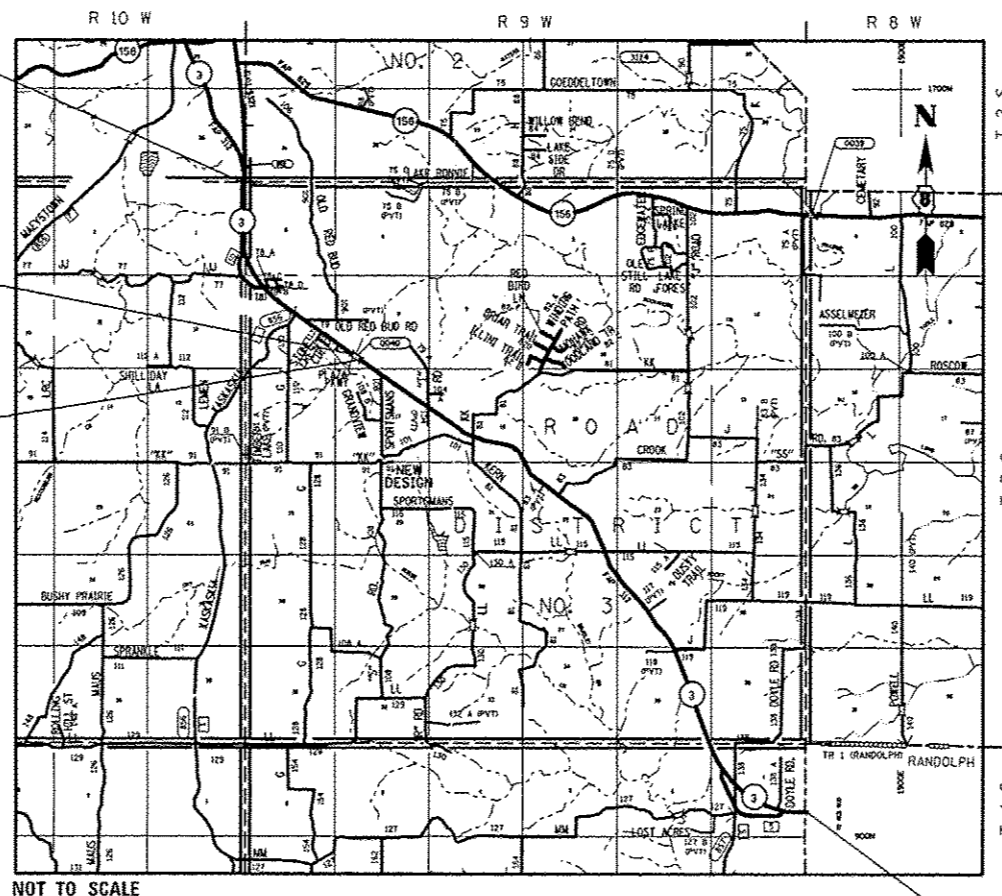
END BRIDGE OMISSION
STA. 1839+16.50

BEGIN BRIDGE OMISSION
STA. 1838+33.50



FULL SIZE PLANS HAVE BEEN PREPARED USING STANDARD ENGINEERING SCALES. REDUCED SIZED PLANS WILL NOT CONFORM TO STANDARD SCALES. IN MAKING MEASUREMENTS ON REDUCED PLANS, THE ABOVE SCALES MAY BE USED.

J.U.L.I.E.
JOINT UTILITY LOCATION INFORMATION FOR EXCAVATION
1-800-892-0123
OR 811



LOCATION MAP
TOWNSHIP = ROAD DISTRICT #3
ROAD DISTRICT #4
GROSS LENGTH = 50572.01 FT. = 9.58 MILE
NET LENGTH = 50489.01 FT. = 9.56 MILE

BEGIN PROJECT
STA. 1459+11
LAT: 38.212194
LONG: -90.027646

PROJECT ENGINEER: MICHAEL PRITCHETT (618) 346-3180
DESIGNER: BO WEDMORE (618) 346-3206

CONTRACT NO. 76H16

STATE OF ILLINOIS
DEPARTMENT OF TRANSPORTATION
DIVISION OF HIGHWAYS

SUBMITTED *May 8 2015*

Jeffrey S. K...
DEPUTY DIRECTOR OF HIGHWAYS, REGION 5 ENGINEER

June 26 2015
John P. Baranzani PE, Jr.
actg. ENGINEER OF DESIGN AND ENVIRONMENT

June 26 2015
Omer Osman PE, Jr.
DIRECTOR OF HIGHWAYS, CHIEF ENGINEER

**PRINTED BY THE AUTHORITY
OF THE STATE OF ILLINOIS**

INDEX OF SHEETS

- 1 COVER SHEET
- 2 GENERAL NOTES, COMMITMENTS & HIGHWAY STANDARDS
- 3-4 SUMMARY OF QUANTITIES
- 5-10 TYPICAL SECTIONS
- 11-17 SCHEDULES
- 18-19 DETAIL SHEETS
- 20-21 EXHIBIT SHEETS

GENERAL NOTES

1. FLUORESCENT ORANGE "ROAD CONSTRUCTION AHEAD" SIGNS (48"X48") SHALL BE PLACED AT EACH END OF THE PROJECT PLUS THE INTERSECTING SIDE ROADS AS DIRECTED BY THE ENGINEER. THESE SIGNS SHALL NOT BE MEASURED FOR PAYMENT. COST SHALL BE INCLUDED IN THE VARIOUS TRAFFIC CONTROL PAY ITEMS.

2. ILLINOIS STATE LAW REQUIRES A 48-HOUR NOTICE BE GIVEN TO ALL UTILITIES WITHIN THE PROJECT AREA BEFORE DIGGING. FIELD MARKING OF FACILITIES MAY BE OBTAINED BY CONTACTING J.U.L.I.E. OR FOR NON-MEMBERS, THE UTILITY COMPANY DIRECTLY. AGENCIES KNOWN TO HAVE FACILITIES WITHIN THE PROJECT AREA ARE AS FOLLOWS:

- AT&T ILLINOIS - COMMUNICATIONS
- CHARTER COMMUNICATIONS, INC. - CABLE TV
- ENABLE-MISSISSIPPI RIVER TRANSMISSION LLC - PIPELINE
- FOUNTAIN WATER DISTRICT - WATER
- FRONTIER NORTH, INC - COMMUNICATIONS
- HARRISONVILLE TELEPHONE COMPANY - COMMUNICATIONS
- MONROE COUNTY ELECTRIC CO-OPERATIVE, INC. - ELECTRIC
- WINDSTREAM KDL, INC. -COMMUNICATIONS

MEMBERS OF J.U.L.I.E. CALL TOLL FREE (800) 892-0123 OR 811 AND ARE INDICATED BY *. NON-J.U.L.I.E. MEMBERS MUST BE NOTIFIED INDIVIDUALLY.

- 3. UTILITY INTERFERENCES ARE NOT ANTICIPATED ON THIS CONTRACT. IT SHALL BE THE CONTRACTOR'S RESPONSIBILITY TO COORDINATE HIS CONSTRUCTION ACTIVITIES WITH THE VARIOUS UTILITY OWNERS. ALL POTENTIAL CONFLICTS SHALL BE INVESTIGATED AND REMEDIAL ACTION TAKEN PRIOR TO INTERRUPTION OF THE CONTRACTOR'S PROGRESS. NO ADDITIONAL COST SHALL BE ADDED TO THE CONTRACT RESULTING FROM UTILITY CONFLICTS.
- 4. THE CONTRACTOR SHALL VERIFY ALL DIMENSIONS AND CONDITIONS IN THE FIELD PRIOR TO ORDERING OF MATERIALS AND BEGINNING CONSTRUCTION.
- 5. NO OVERNIGHT LANE CLOSURES WILL BE ALLOWED.
- 6. THE THICKNESS OF THE BITUMINOUS MIXTURE SHOWN ON THE PLANS IS THE NOMINAL THICKNESS. DEVIATIONS FROM THE NOMINAL THICKNESS WILL BE PERMITTED WHEN SUCH DEVIATIONS OCCUR DUE TO IRREGULARITIES IN THE EXISTING SURFACE OR BASE ON WHICH THE BITUMINOUS MIXTURE IS PLACED.
- 7. ALL AREAS DISTURBED FOR ANY REASON SHALL BE SEEDED AS DIRECTED BY THE ENGINEER. ALL AREAS DISTURBED BY THE CONTRACTOR OUTSIDE THE PROPOSED CONSTRUCTION LIMITS SHALL BE SEEDED AT THE CONTRACTOR'S EXPENSE.
- 8. THE CONTRACTOR AND THE ENGINEER SHALL BE AWARE THAT NO SURVEY WAS PERFORMED FOR THIS PROJECT. THE STATIONING AND TOPO SHOWN IN THE PLANS WAS CREATED USING MICROFILM AND FIELD MEASUREMENTS MADE BY DESIGN PERSONNEL. BOTH SHALL BE ASSUMED TO BE APPROXIMATE.
- 9. FLAGGERS SHALL BE PRESENT DURING ALL CLOSURE HOURS, INCLUDING LUNCH HOUR, AND NO ADDITIONAL COMPENSATION SHALL BE APPLIED.
- 10. THE PAVEMENT MARKING SHOWN IN THE SCHEDULES IS APPROXIMATE. THE LOCATION OF THE PROPOSED MARKINGS SHALL MATCH EXISTING LOCATIONS. SEE SHEETS *20 & *21 REFERENCING THE LEFT TURN LANE LAYOUT.
- 11. ALL TEMPORARY PAVEMENT MARKINGS WILL BE PLACED IN SUCH A MANNER SO AS NOT TO INTERFERE WITH THE PLACEMENT OF PERMANENT PAVEMENT MARKINGS.
- 12. THE QUALITY CONTROL FOR PERFORMANCE ITEMS AND QUANTITIES ARE AS FOLLOWS:

HMA SURFACE COURSE, MIX "D", NSD, IL 9.5 - 15874 TONS
HMA SHOULDERS, IL 19.0L - 4255 TONS

13. THE FOLLOWING MIXTURE REQUIREMENTS ARE APPLICABLE FOR THIS PROJECT:

ROUTE	FAP 312
SECTION	69, TOURS-3
COUNTY	MONROE
CONTRACT	76H16

DESCRIPTION:	Resurfacing of IL 3 from Vandebrooke Drive to Randolph County Line
--------------	--

ADT (Construction Yr):	10600
MU%:	9
SU%:	5.5
20 YR. ESAL'S:	5.84

MIXTURE USE	SURFACE	PATCHING	SHOULDERS ≥ 2.25"	INCIDENTAL
AC/PG	PG 64-22	PG 64-22	PG 64-22	PG 64-22
RAP % (MAX)	SEE SPEC.	SEE SPEC.	SEE SPEC.	SEE SPEC.
DESIGN AIR VOIDS	4.0% @ Ndos=90	4.0% @ Ndos=90	4% @ Ndos=30	4% @ Ndos=90
MIX COMPOSITION				
GRADATION MIXTURE	IL 9.5	IL 19.0	IL 19.0L	IL 9.5
FRICTION AGG	MIXTURE "D"	MIXTURE "B"		MIXTURE "C"
QUALITY MGMT				
PROGRAM	OCP	OC/QA	OCP	OC/QA

Plan quantities for Bituminous Concrete Surface Course Items are calculated using a unit weight of 112 lb/sq yd/in (59.8 kg/sq m/25 mm thickness).

- 14. FOR CLASS B PATCHES, THE REINFORCEMENT SHALL BE PLACED TO MATCH THE EXISTING CONCRETE PAVEMENT.
- 15. APPROXIMATELY 441 SQ YDS OF PCC PATCHES WITHIN THE PROJECT LIMITS WILL BE SUBJECT TO THE HMA SURFACE REMOVAL OPERATIONS OF THE DEPTH SPECIFIED IN THE PLANS. THE COST OF MILLING THESE PATCHES SHALL BE INCLUDED IN THE CONTRACT UNIT PRICE OF THE HMA REMOVAL ITEMS IN THE CONTRACT AND NO ADDITIONAL COMPENSATION WILL BE ALLOWED.
- 16. SHORT TERM PAVEMENT MARKING SHALL BE APPLIED TO MILLED, PRIMED, AND FINAL SURFACE. ONLY REMOVAL FROM FINAL SURFACE PAID FOR AS WORK ZONE PAVEMENT MARKING REMOVAL.
- 17. THE ILLINOIS DEPARTMENT OF TRANSPORTATION STRONGLY ENCOURAGES THE PRIME CONTRACTOR AND THEIR APPROVED SUB-CONTRACTORS TO HIRE MINORITY, WOMEN AND DISADVANTAGED INDIVIDUALS FROM ITS FEDERALLY FUNDED HIGHWAY CONSTRUCTION CAREERS TRAINING PROGRAM (HCCTP) TO HELP MEET WORKFORCE AND TRAINEE GOALS. THIS PROGRAM IS TRAINING MINORITIES, WOMEN, AND DISADVANTAGED INDIVIDUALS IN HIGHWAY CONSTRUCTION-RELATED SKILLS, E.G., MATH FOR THE TRADES, JOB READINESS, TECHNICAL SKILLS CERTIFICATION, TO PREPARE THEM FOR A CAREER IN THE HIGHWAY CONSTRUCTION TRADES. GRADUATES ARE WELL-TRAINED AND READY TO BECOME PRODUCTIVE ENTRY-LEVEL CONSTRUCTION WORKERS. PLEASE CONTACT THE DISTRICT 8 EEO OFFICE AT 618-346-3360 AND/OR THE HCCTP COORDINATOR AT 618-874-6528 TO LEARN MORE ABOUT THE PROGRAM AND FOR ASSISTANCE IN MEETING WORKFORCE AND TRAINEE GOALS.

HIGHWAY STANDARDS

000001-06	STANDARD SYMBOLS, ABBREVIATIONS AND PATTERNS
001001-02	AREAS OF REINFORCEMENT BARS
001006	DECIMAL OF AN INCH AND OF A FOOT
420701-02	PAVEMENT FABRIC
442101-07	CLASS B PATCHES
701001-02	OFF-RD OPERATIONS, 2L, 2W, MORE THAN 15' AWAY
701006-05	OFF-RD OPERATIONS, 2L, 2W, 15' TO 24" FROM PAVEMENT EDGE
701201-04	LANE CLOSURE, 2L, 2W, DAY ONLY, FOR SPEEDS ≥ 45 MPH
701301-04	LANE CLOSURE, 2L, 2W, SHORT TIME OPERATIONS
701306-03	LANE CLOSURE, 2L, 2W, SLOW MOVING OPERATIONS DAY ONLY, FOR SPEEDS ≥ 45 MPH
701311-03	LANE CLOSURE, 2L, 2W MOVING OPERATIONS - DAY ONLY
701336-06	LANE CLOSURE, 2L, 2W, WORK AREAS IN SERIES, FOR SPEEDS ≥ 45 MPH
701901-04	TRAFFIC CONTROL DEVICES
780001-05	TYPICAL PAVEMENT MARKINGS
781001-03	TYPICAL APPLICATIONS RAISED REFLECTIVE PAVEMENT MARKERS

COMMITMENTS

NONE

FILE NAME	USER NAME	DESIGNED	REVISED	STATE OF ILLINOIS DEPARTMENT OF TRANSPORTATION	GENERAL NOTES, INDEX OF SHEETS & HIGHWAY STANDARDS	F.A.P. RTE.	SECTION	COUNTY	TOTAL SHEETS	SHEET NO.	
0:\p\work\p\dot\wedmore\j\0302269\dot	vedmore_jb	DRAWN	REVISED			312	69,70RS-3	MONROE	21	2	
	6H16-shr-typical.dgn	CHECKED	REVISED			CONTRACT NO. 76H16					
	PLOT SCALE = 100.0000' / 1"	DATE	REVISED			SCALE: NTS	SHEET NO. OF SHEETS	STA.	TO STA.	FED. ROAD DIST. NO.	ILLINOIS FED. AID PROJECT
	PLOT DATE = 5/7/2015										

CODE NO.	ITEM	UNIT	TOTAL QUANTITY	CONSTR. CODE
				100% STATE ROADWAY
				0005
				RURAL
40600275	BITUMINOUS MATERIALS (PRIME COAT)	POUND	71885	71885
40600982	HOT-MIX ASPHALT SURFACE REMOVAL - BUTT JOINT	SQ YD	187	187
40600990	TEMPORARY RAMP	SQ YD	26	26
40603345	HOT-MIX ASPHALT SURFACE COURSE, MIX "D", N90	TON	15874	15874
40800025	BITUMINOUS MATERIALS (PRIME COAT)	POUND	806	806
40800050	INCIDENTAL HOT-MIX ASPHALT SURFACING	TON	38	38
44000155	HOT-MIX ASPHALT SURFACE REMOVAL, 1 1/2"	SQ YD	159745	159745
44201031	CLASS B PATCHES, TYPE II, 15 INCH	SQ YD	1772	1772
44201035	CLASS B PATCHES, TYPE III, 15 INCH	SQ YD	58	58
44201299	DOWEL BARS 1 1/2"	EACH	4071	4071
44213100	PAVEMENT FABRIC	SQ YD	58	58
44213200	SAW CUTS	FOOT	9708	9708
44213204	TIE BARS 3/4"	EACH	22	22
44300200	STRIP REFLECTIVE CRACK CONTROL TREATMENT	FOOT	74041	74041

CODE NO.	ITEM	UNIT	TOTAL QUANTITY	CONSTR. CODE
				100% STATE ROADWAY
				0005
				RURAL
48102100	AGGREGATE WEDGE SHOULDER, TYPE B	TON	3546	3546
48203100	HOT-MIX ASPHALT SHOULDERS	TON	4255	4255
60600605	CONCRETE CURB, TYPE B	FOOT	63	63
* 63000001	STEEL PLATE BEAM GUARDRAIL, TYPE A, 6 FOOT POSTS	FOOT	400	400
* 63100085	TRAFFIC BARRIER TERMINAL, TYPE 6	EACH	4	4
* 63100167	TRAFFIC BARRIER TERMINAL, TYPE 1 (SPECIAL) TANGENT	EACH	4	4
63200310	GUARDRAIL REMOVAL	FOOT	320	320
64200108	SHOULDER RUMBLE STRIPS, 8 INCH	FOOT	96189	96189
67000400	ENGINEER'S FIELD OFFICE, TYPE A	CAL MO	9	9
67100100	MOBILIZATION	LSUM	1	1
70100450	TRAFFIC CONTROL AND PROTECTION, STANDARD 701201	LSUM	1	1
70100460	TRAFFIC CONTROL AND PROTECTION, STANDARD 701306	LSUM	1	1
70100600	TRAFFIC CONTROL AND PROTECTION, STANDARD 701336	LSUM	1	1
70106800	CHANGEABLE MESSAGE SIGN	CAL MO	12	12

* SPECIALTY ITEM

FILE NAME :	USER NAME :	DESIGNED :	REVISED :	STATE OF ILLINOIS DEPARTMENT OF TRANSPORTATION	SUMMARY OF QUANTITIES				F.A.P. RTE.	SECTION	COUNTY	TOTAL SHEETS	SHEET NO.
...	...	DRAWN :	REVISED :		312	169,70RS-3	MONROE	21	3				
...	...	CHECKED :	REVISED :		CONTRACT NO. 76H16				FED. ROAD DIST. NO.	ILLINOIS FED. AID PROJECT			
...	...	DATE :	REVISED :		SCALE: NTS	SHEET NO. OF SHEETS	STA.	TO STA.					

CONSTR. CODE

100% STATE
ROADWAY
0005
RURAL

CODE NO.	ITEM	UNIT	TOTAL QUANTITY	
70300100	SHORT TERM PAVEMENT MARKING	FOOT	8958	8958
70300210	TEMPORARY PAVEMENT MARKING LETTERS AND SYMBOLS	SQ FT	63	63
70300220	TEMPORARY PAVEMENT MARKING - LINE 4"	FOOT	130254	130254
70300260	TEMPORARY PAVEMENT MARKING - LINE 12"	FOOT	566	566
70301000	WORK ZONE PAVEMENT MARKING REMOVAL	SQ FT	45119	45119
* 78000100	THERMOPLASTIC PAVEMENT MARKING - LETTERS AND SYMBOLS	SQ FT	63	63
* 78000200	THERMOPLASTIC PAVEMENT MARKING - LINE 4"	FOOT	128336	128336
* 78000600	THERMOPLASTIC PAVEMENT MARKING - LINE 12"	FOOT	566	566
* 78100100	RAISED REFLECTIVE PAVEMENT MARKER	EACH	765	765
* 78200410	GUARDRAIL MARKERS, TYPE A	EACH	12	12
* 78201000	TERMINAL MARKER - DIRECT APPLIED	EACH	4	4
78300200	RAISED REFLECTIVE PAVEMENT MARKER REMOVAL	EACH	765	765
X0326697	CENTER LINE - RUMBLE STRIP - 8"	FOOT	3122	3122
Z0070100	SURVEY MONUMENT COVER ASSEMBLY	EACH	23	23
Ø Z0076604	TRAINEES TRAINING PROGRAM GRADUATE	HOUR	1500	1500
H Z0076600	TRAINEES	HOUR	0	

Ø 0042
* SPECIALTY ITEM

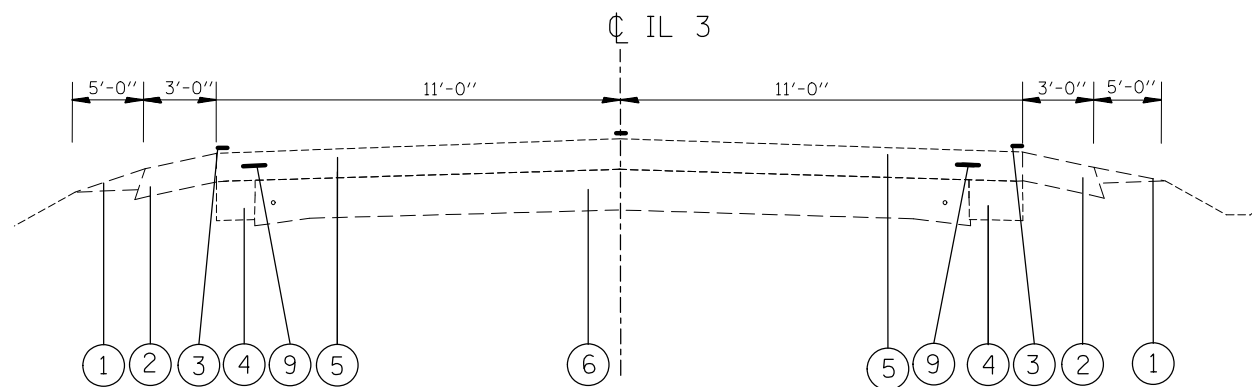
FILE NAME =	USER NAME = vedmore.jh	DESIGNED -	REVISED -
c:\pvc\work\psidot\vedmore.jh\0302369\d076h16-eh1-typical.dgn		DRAWN -	REVISED -
PLOT SCALE = 100.0000' / 1"		CHECKED -	REVISED -
PLOT DATE = 5/7/2015		DATE -	REVISED -

STATE OF ILLINOIS
DEPARTMENT OF TRANSPORTATION

SUMMARY OF QUANTITIES

SCALE: NTS SHEET NO. OF SHEETS STA. TO STA.

F.A.P. RTE.	SECTION	COUNTY	TOTAL SHEETS	SHEET NO.
312	169.70RS-3	MONROE	21	4
CONTRACT NO. 76H16				
FED. ROAD DIST. NO. [ILLINOIS] FED. AID PROJECT				



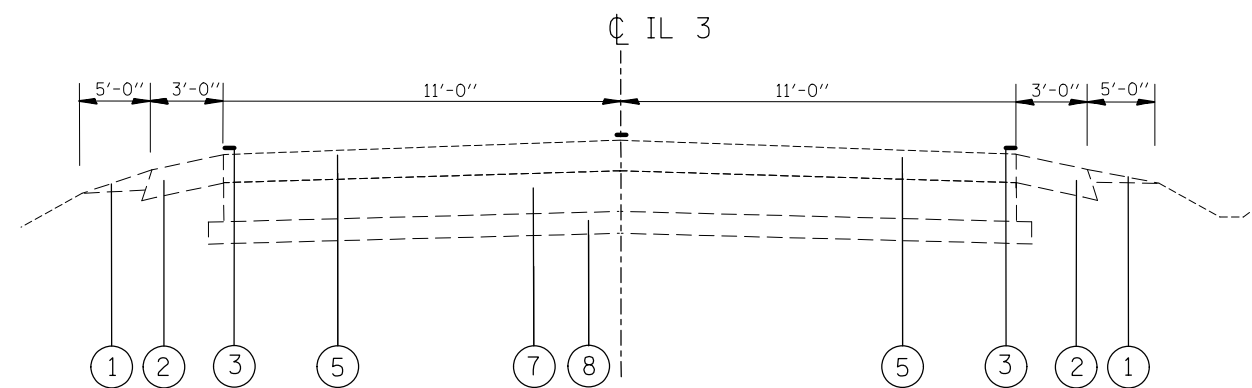
EXISTING TYPICAL SECTION

STA. 1530+46.20 TO 1591+35.62
 STA. 1603+81.86 TO 1637+13.33
 STA. 1645+68.13 TO 1664+14.31
 STA. 1681+61.44 TO 1712+11.37
 STA. 1740+01.76 TO 1753+71.55
 STA. 1765+20.66 TO 1835+48.70
 STA. 1835+41.30 TO 1879+27.24
 STA. 1944+92.41 TO 1966+46

LEGEND

- ① EXISTING AGGREGATE WEDGE SHOULDERS, TYPE B
- ② EXISTING HMA SHOULDERS, 6"
- ③ EXISTING PAINT PAVEMENT MARKING, LINE 4"
- ④ EXISTING P.C.C WIDENING, 8"
- ⑤ EXISTING BITUMINOUS RESURFACING, 6"±
- ⑥ EXISTING P.C.C. PAVEMENT, 9'-6"-9"
- ⑦ EXISTING P.C.C. BASE COURSE, 8"
- ⑧ EXISTING SUB-BASE GRANULAR MATERIAL TYPE A
- ⑨ EXISTING STRIP REFLECTIVE CRACK CONTROL
- ⑩ PROPOSED HMA SURFACE REMOVAL, 1 1/2"
- ⑪ PROPOSED HMA SURFACE COURSE, 2 1/4"
- ⑫ PROPOSED HMA SHOULDER, 2 1/4"
- ⑬ PROPOSED AGGREGATE WEDGE SHOULDER, TYPE B
- ⑭ PROPOSED BITUMINOUS MATERIAL (PRIME COAT)
- ⑮ PROPOSED AGGREGATE (PRIME COAT)
- ⑯ PROPOSED THERMOPLASTIC PAVEMENT MARKING, LINE 4"
- ⑰ PROPOSED STRIP REFLECTIVE CRACK CONTROL TREATMENT

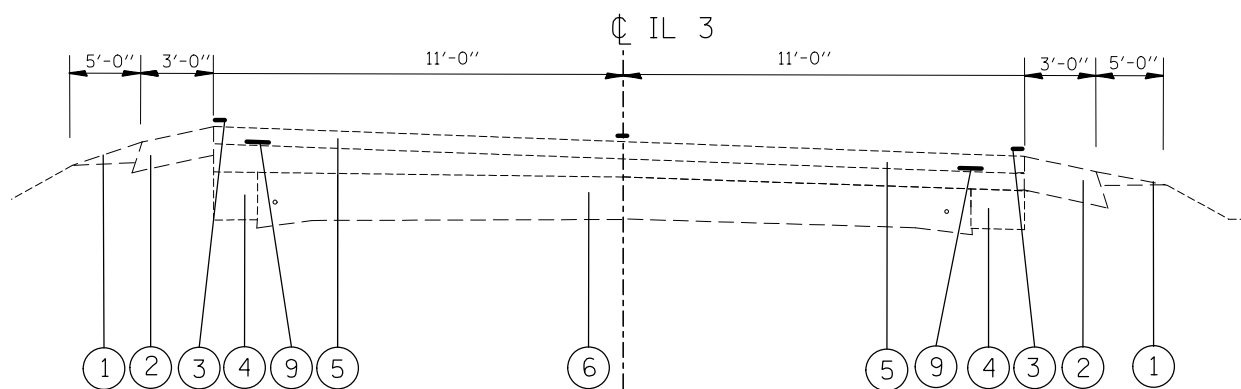
PROPOSED REMOVAL ITEMS



EXISTING TYPICAL SECTION

STA. 1879+27.24 TO 1884+70.02
 STA. 1943+41.99 TO 1944+92.41

FILE NAME =	USER NAME = wedmore.jb	DESIGNED -	REVISED -	STATE OF ILLINOIS DEPARTMENT OF TRANSPORTATION	EXISTING TYPICAL SECTIONS			F.A.P. RTE.	SECTION	COUNTY	TOTAL SHEETS	SHEET NO.
et:\pwork\pwork\wedmore.jb\d0382369\d076h16-sh-typical1.dgn		DRAWN -	REVISED -		312	(69,70)RS-3	MONROE	21	5			
	PLOT SCALE = 100.0000' / 1".	CHECKED -	REVISED -		SCALE: NTS			SHEET NO. OF SHEETS		STA.	TO STA.	
	PLOT DATE = 5/7/2015	DATE -	REVISED -					CONTRACT NO. 76H16		FED. ROAD DIST. NO. ILLINOIS FED. AID PROJECT		



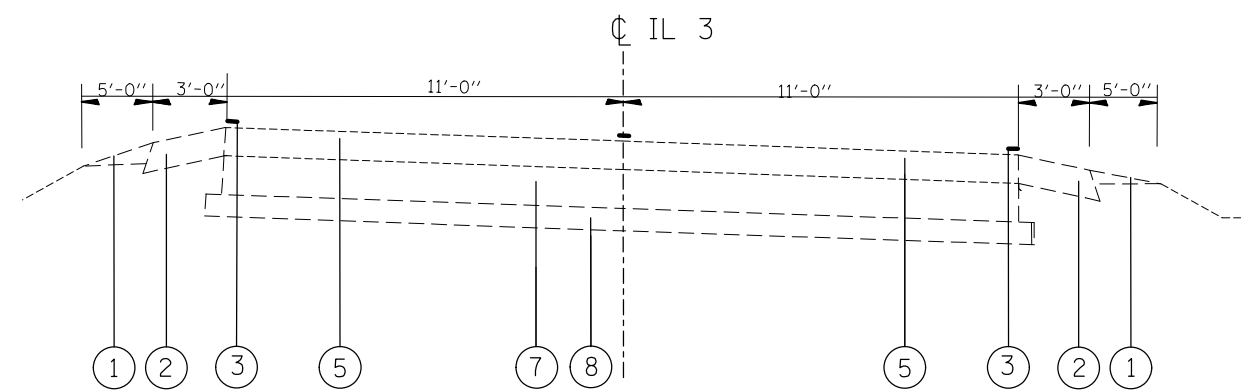
EXISTING TYPICAL SUPERELEVATION SECTION

STA. 1529+77.24 TO 1530+46.20
 STA. 1591+35.62 TO 1603+81.86
 STA. 1637+13.33 TO 1645+68.13
 STA. 1664+14.31 TO 1681+61.44
 STA. 1712+11.37 TO 1740+01.76
 STA. 1753+71.55 TO 1765+20.66

LEGEND

- ① EXISTING AGGREGATE WEDGE SHOULDERS, TYPE B
- ② EXISTING HMA SHOULDERS, 6"
- ③ EXISTING PAINT PAVEMENT MARKING, LINE 4"
- ④ EXISTING P.C.C WIDENING, 8"
- ⑤ EXISTING BITUMINOUS RESURFACING, 6"±
- ⑥ EXISTING P.C.C. PAVEMENT, 9"-6"-9"
- ⑦ EXISTING P.C.C. BASE COURSE, 8"
- ⑧ EXISTING SUB-BASE GRANULAR MATERIAL TYPE A
- ⑨ EXISTING STRIP REFLECTIVE CRACK CONTROL
- ⑩ PROPOSED HMA SURFACE REMOVAL, 1 1/2"
- ⑪ PROPOSED HMA SURFACE COURSE, 2 1/4"
- ⑫ PROPOSED HMA SHOULDER, 2 1/4"
- ⑬ PROPOSED AGGREGATE WEDGE SHOULDER, TYPE B
- ⑭ PROPOSED BITUMINOUS MATERIAL (PRIME COAT)
- ⑮ PROPOSED AGGREGATE (PRIME COAT)
- ⑯ PROPOSED THERMOPLASTIC PAVEMENT MARKING, LINE 4"
- ⑰ PROPOSED STRIP REFLECTIVE CRACK CONTROL TREATMENT

PROPOSED REMOVAL ITEMS



EXISTING TYPICAL SUPERELEVATION SECTION

STA. 1459+11 TO 1529+77.24
 STA. 1884+70.02 TO 1898+22
 STA. 1912+11 TO 1943+41.99

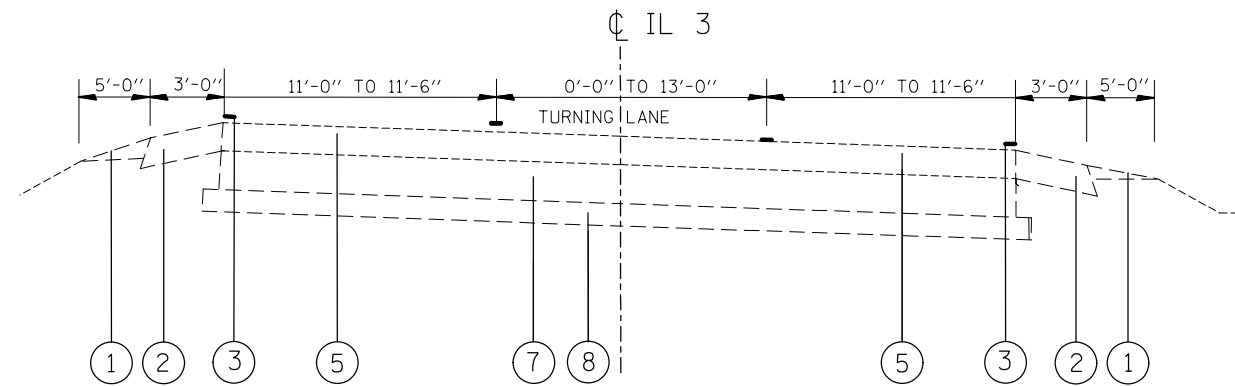
FILE NAME =	USER NAME = wedmore.jb	DESIGNED -	REVISED -
et:\pwork\pwork\wedmore.jb\d0382369\d076h16-sh-typical1.dgn		DRAWN -	REVISED -
	PLOT SCALE = 100.0000' / 1in.	CHECKED -	REVISED -
	PLOT DATE = 5/7/2015	DATE -	REVISED -

**STATE OF ILLINOIS
 DEPARTMENT OF TRANSPORTATION**

EXISTING TYPICAL SECTIONS

SCALE: NTS SHEET NO. OF SHEETS STA. TO STA.

F.A.P. RTE.	SECTION	COUNTY	TOTAL SHEETS	SHEET NO.
312	(69,70)RS-3	MONROE	21	6
FED. ROAD DIST. NO. ILLINOIS FED. AID PROJECT			CONTRACT NO. 76H16	



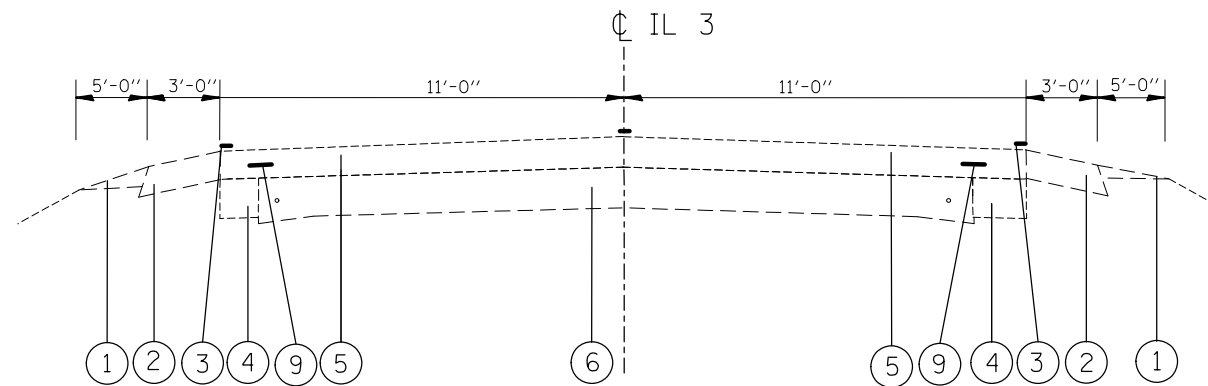
EXISTING TYPICAL SUPERELEVATION SECTION

STA. 1898+22 TO 1912+11

LEGEND

- ① EXISTING AGGREGATE WEDGE SHOULDERS, TYPE B
- ② EXISTING HMA SHOULDERS, 6"
- ③ EXISTING PAINT PAVEMENT MARKING, LINE 4"
- ④ EXISTING P.C.C WIDENING, 8"
- ⑤ EXISTING BITUMINOUS RESURFACING, 6"±
- ⑥ EXISTING P.C.C. PAVEMENT, 9"-6"-9"
- ⑦ EXISTING P.C.C. BASE COURSE, 8"
- ⑧ EXISTING SUB-BASE GRANULAR MATERIAL TYPE A
- ⑨ EXISTING STRIP REFLECTIVE CRACK CONTROL
- ⑩ PROPOSED HMA SURFACE REMOVAL, 1 1/2"
- ⑪ PROPOSED HMA SURFACE COURSE, 2 1/4"
- ⑫ PROPOSED HMA SHOULDER, 2 1/4"
- ⑬ PROPOSED AGGREGATE WEDGE SHOULDER, TYPE B
- ⑭ PROPOSED BITUMINOUS MATERIAL (PRIME COAT)
- ⑮ PROPOSED AGGREGATE (PRIME COAT)
- ⑯ PROPOSED THERMOPLASTIC PAVEMENT MARKING, LINE 4"
- ⑰ PROPOSED STRIP REFLECTIVE CRACK CONTROL TREATMENT

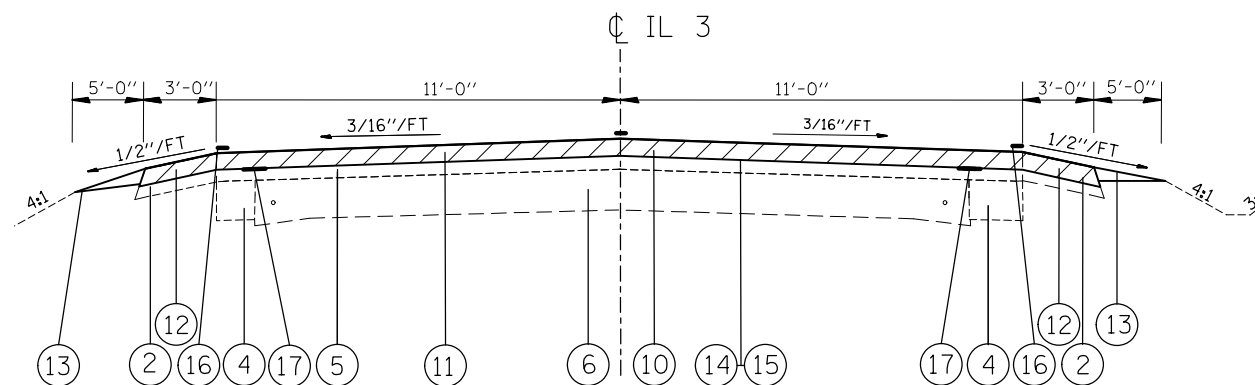
PROPOSED REMOVAL ITEMS



EXISTING TYPICAL SECTION

STA. 1835+48.70 TO 1838+33.50
 STA. 1838+33.50 TO 1839+16.50 (BRIDGE OMISSION)
 STA. 1839+16.50 TO 1842+08.70

FILE NAME =	USER NAME = wedmore.jb	DESIGNED -	REVISED -	STATE OF ILLINOIS DEPARTMENT OF TRANSPORTATION	EXISTING TYPICAL SECTIONS			F.A.P. RTE.	SECTION	COUNTY	TOTAL SHEETS	SHEET NO.	
	et:\pwork\pwork\wedmore.jb\d0382369\d076h16-sh-typical1.dgn	DRAWN -	REVISED -		SCALE: NTS	SHEET NO. OF SHEETS	STA.	TO STA.	312	69,701RS-3	MONROE	21	7
	PLOT SCALE = 100.0000' / 1".	CHECKED -	REVISED -					CONTRACT NO. 76H16					
	PLOT DATE = 5/7/2015	DATE -	REVISED -					ILLINOIS FED. AID PROJECT					



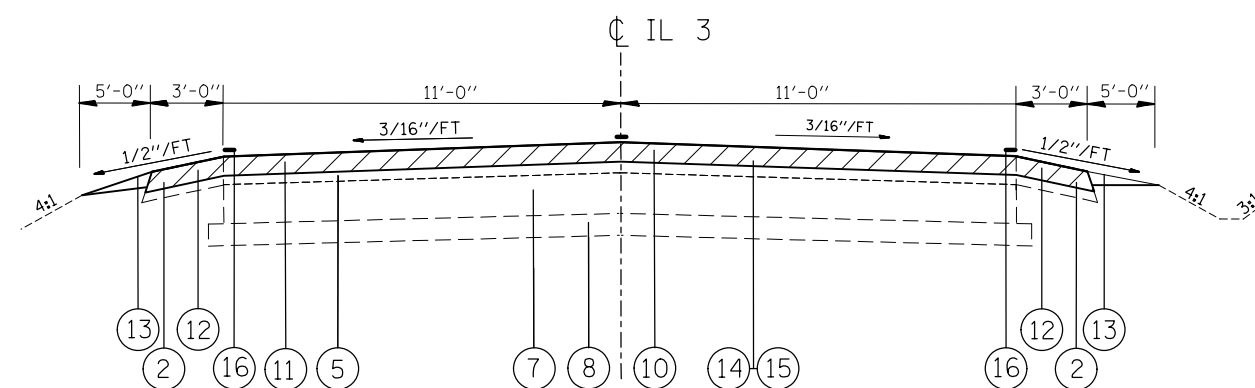
PROPOSED TYPICAL SECTION

STA. 1530+46.20 TO 1591+35.62
 STA. 1603+81.86 TO 1637+13.33
 STA. 1645+68.13 TO 1664+14.31
 STA. 1681+61.44 TO 1712+11.37
 STA. 1740+01.76 TO 1753+71.55
 STA. 1765+20.66 TO 1835+48.70
 STA. 1842+08.70 TO 1879+27.24
 STA. 1944+92.41 TO 1966+46

LEGEND

- ① EXISTING AGGREGATE WEDGE SHOULDERS, TYPE B
- ② EXISTING HMA SHOULDERS, 6"
- ③ EXISTING PAINT PAVEMENT MARKING, LINE 4"
- ④ EXISTING P.C.C WIDENING, 8"
- ⑤ EXISTING BITUMINOUS RESURFACING, 6"±
- ⑥ EXISTING P.C.C. PAVEMENT, 9"-6"-9"
- ⑦ EXISTING P.C.C. BASE COURSE, 8"
- ⑧ EXISTING SUB-BASE GRANULAR MATERIAL TYPE A
- ⑨ EXISTING STRIP REFLECTIVE CRACK CONTROL
- ⑩ PROPOSED HMA SURFACE REMOVAL, 1 1/2"
- ⑪ PROPOSED HMA SURFACE COURSE, 2 1/4"
- ⑫ PROPOSED HMA SHOULDER, 2 1/4"
- ⑬ PROPOSED AGGREGATE WEDGE SHOULDER, TYPE B
- ⑭ PROPOSED BITUMINOUS MATERIAL (PRIME COAT)
- ⑮ PROPOSED AGGREGATE (PRIME COAT)
- ⑯ PROPOSED THERMOPLASTIC PAVEMENT MARKING, LINE 4"
- ⑰ PROPOSED STRIP REFLECTIVE CRACK CONTROL TREATMENT

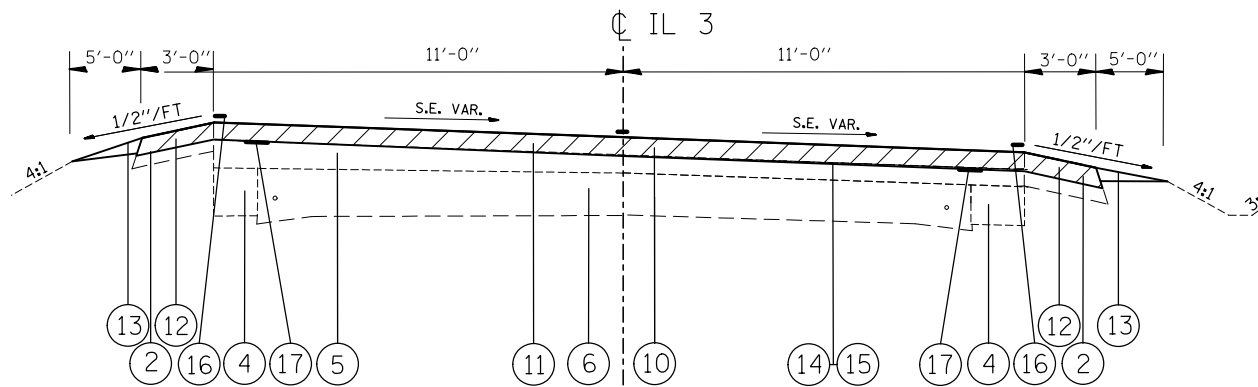
PROPOSED REMOVAL ITEMS



PROPOSED TYPICAL SECTION

STA. 1879+27.24 TO 1884+70.02
 STA. 1943+41.99 TO 1944+92.41

FILE NAME =	USER NAME = wedmore.jb	DESIGNED -	REVISED -	STATE OF ILLINOIS DEPARTMENT OF TRANSPORTATION	PROPOSED TYPICAL SECTIONS			F.A.P. RTE.	SECTION	COUNTY	TOTAL SHEETS	SHEET NO.
et:\pwork\pwork\wedmore.jb\d0382369\d076h16-sh-typical1.s.dgn		DRAWN -	REVISED -					312	(69,70)RS-3	MONROE	21	8
	PLOT SCALE = 100.0000' / 1" =	CHECKED -	REVISED -		SCALE: NTS			SHEET NO. OF SHEETS		STA.	TO STA.	
	PLOT DATE = 5/7/2015	DATE -	REVISED -		CONTRACT NO. 76H16							
FED. ROAD DIST. NO. ILLINOIS FED. AID PROJECT												



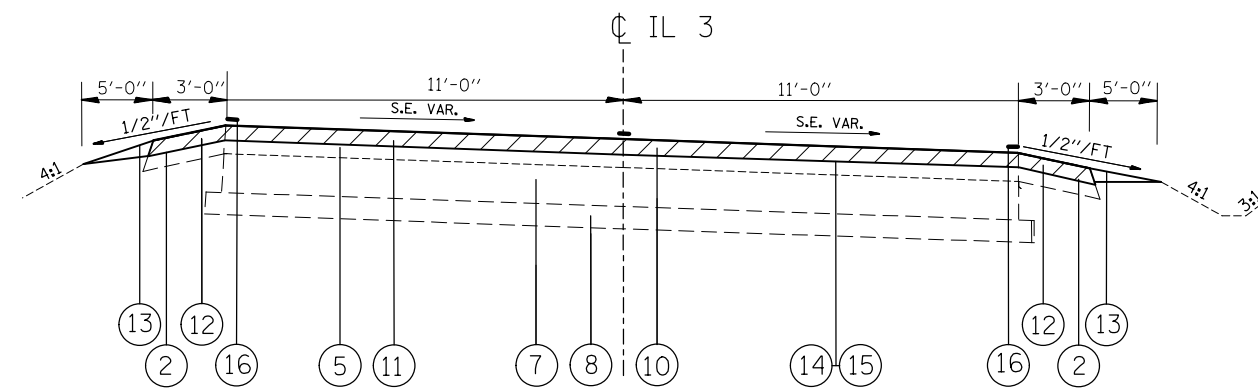
PROPOSED TYPICAL SUPERELEVATION SECTION

STA. 1529+77.24 TO 1530+46.20
 STA. 1591+35.62 TO 1603+81.86
 STA. 1637+13.33 TO 1645+68.13
 STA. 1664+14.31 TO 1681+61.44
 STA. 1712+11.37 TO 1740+01.76
 STA. 1753+71.55 TO 1765+20.66

LEGEND

- ① EXISTING AGGREGATE WEDGE SHOULDERS, TYPE B
- ② EXISTING HMA SHOULDERS, 6"
- ③ EXISTING PAINT PAVEMENT MARKING, LINE 4"
- ④ EXISTING P.C.C WIDENING, 8"
- ⑤ EXISTING BITUMINOUS RESURFACING, 6"±
- ⑥ EXISTING P.C.C. PAVEMENT, 9"-6"-9"
- ⑦ EXISTING P.C.C. BASE COURSE, 8"
- ⑧ EXISTING SUB-BASE GRANULAR MATERIAL TYPE A
- ⑨ EXISTING STRIP REFLECTIVE CRACK CONTROL
- ⑩ PROPOSED HMA SURFACE REMOVAL, 1 1/2"
- ⑪ PROPOSED HMA SURFACE COURSE, 2 1/4"
- ⑫ PROPOSED HMA SHOULDER, 2 1/4"
- ⑬ PROPOSED AGGREGATE WEDGE SHOULDER, TYPE B
- ⑭ PROPOSED BITUMINOUS MATERIAL (PRIME COAT)
- ⑮ PROPOSED AGGREGATE (PRIME COAT)
- ⑯ PROPOSED THERMOPLASTIC PAVEMENT MARKING, LINE 4"
- ⑰ PROPOSED STRIP REFLECTIVE CRACK CONTROL TREATMENT

PROPOSED REMOVAL ITEMS



PROPOSED TYPICAL SUPERELEVATION SECTION

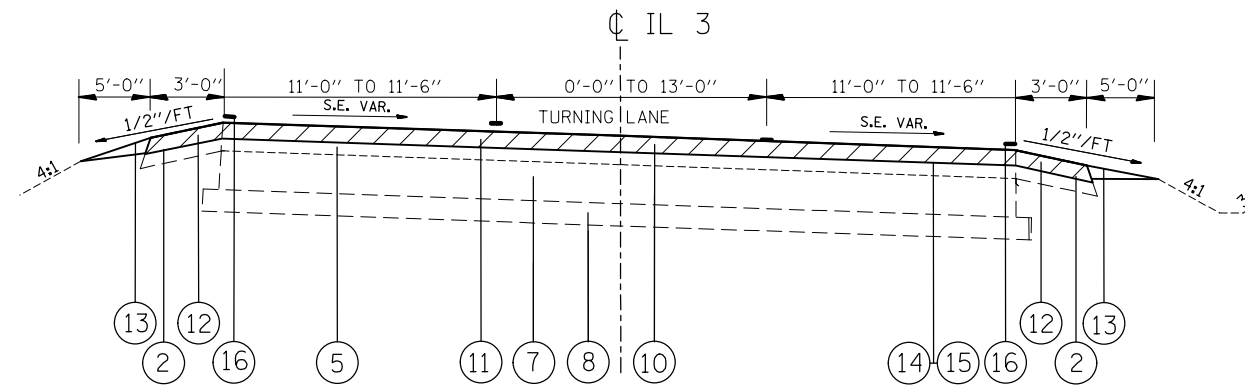
STA. 1459+11 TO 1529+77.24
 STA. 1884+70.02 TO 1898+22
 STA. 1912+11 TO 1943+41.99

FILE NAME =	USER NAME = wedmore.jb	DESIGNED -	REVISED -
et:\pwwork\pwwork\wedmore.jb\d0382369\d076h16-sh-typical1.dgn		DRAWN -	REVISED -
	PLOT SCALE = 100.0000' / 1"	CHECKED -	REVISED -
	PLOT DATE = 5/7/2015	DATE -	REVISED -

**STATE OF ILLINOIS
 DEPARTMENT OF TRANSPORTATION**

PROPOSED TYPICAL SECTIONS	
SCALE: NTS	SHEET NO. OF SHEETS
STA.	TO STA.

F.A.P. RTE.	SECTION	COUNTY	TOTAL SHEETS	SHEET NO.
312	(69,70)RS-3	MONROE	21	9
CONTRACT NO. 76H16				
FED. ROAD DIST. NO. ILLINOIS FED. AID PROJECT				



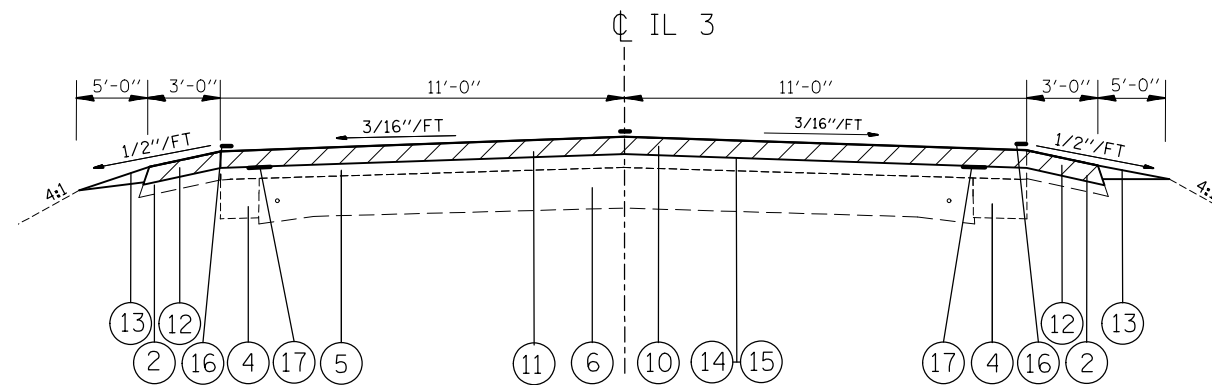
PROPOSED TYPICAL SUPERELEVATION SECTION

STA. 1898+22 TO 1912+11

LEGEND

- ① EXISTING AGGREGATE WEDGE SHOULDERS, TYPE B
- ② EXISTING HMA SHOULDERS, 6"
- ③ EXISTING PAINT PAVEMENT MARKING, LINE 4"
- ④ EXISTING P.C.C WIDENING, 8"
- ⑤ EXISTING BITUMINOUS RESURFACING, 6"±
- ⑥ EXISTING P.C.C. PAVEMENT, 9"-6"-9"
- ⑦ EXISTING P.C.C. BASE COURSE, 8"
- ⑧ EXISTING SUB-BASE GRANULAR MATERIAL TYPE A
- ⑨ EXISTING STRIP REFLECTIVE CRACK CONTROL
- ⑩ PROPOSED HMA SURFACE REMOVAL, 1 1/2"
- ⑪ PROPOSED HMA SURFACE COURSE, 2 1/4"
- ⑫ PROPOSED HMA SHOULDER, 2 1/4"
- ⑬ PROPOSED AGGREGATE WEDGE SHOULDER, TYPE B
- ⑭ PROPOSED BITUMINOUS MATERIAL (PRIME COAT)
- ⑮ PROPOSED AGGREGATE (PRIME COAT)
- ⑯ PROPOSED THERMOPLASTIC PAVEMENT MARKING, LINE 4"
- ⑰ PROPOSED STRIP REFLECTIVE CRACK CONTROL TREATMENT

PROPOSED REMOVAL ITEMS



PROPOSED TYPICAL SECTION

STA. 1835+48.70 TO 1838+33.50
 STA. 1838+33.50 TO 1839+16.50 (BRIDGE OMISSION)
 STA. 1839+16.50 TO 1842+08.70

FILE NAME =	USER NAME = wedmore.jb	DESIGNED -	REVISED -	STATE OF ILLINOIS DEPARTMENT OF TRANSPORTATION	PROPOSED TYPICAL SECTIONS			F.A.P. RTE.	SECTION	COUNTY	TOTAL SHEETS	SHEET NO.
et:\pwork\pwork\wedmore.jb\d0382369\d076h16-sh-typical1.s.dgn	PLOT SCALE = 100.0000' / 1".	DRAWN -	REVISED -					312	(69,70)RS-3	MONROE	21	10
	PLOT DATE = 5/7/2015	CHECKED -	REVISED -		SCALE: NTS SHEET NO. OF SHEETS STA. TO STA.			CONTRACT NO. 76H16				
		DATE -	REVISED -		FED. ROAD DIST. NO. ILLINOIS FED. AID PROJECT							

CLASS B PAVEMENT PATCHING SCHEDULE -SOUTHBOUND-									
STATION	SHOULDER TYPE	LENGTH	LANE WIDTH	CLASS B PATCH TYPE II, 15"	CLASS B PATCH TYPE III, 15"	DOWEL BARS 1 1/2"	TIE BARS, 3/4 "	PAVEMENT FABRIC	SAWCUT
SOUTHBOUND		FOOT	FOOT	SQ YD	SQ YD	EACH	EACH	SQ YD	FOOT
1522+47	HMA	6.00	11.00	7.33		20			45.00
1525+11	HMA	6.00	11.00	7.33		20			45.00
1527+75	HMA	12.00	11.00	14.67		20			57.00
1540+95	HMA	12.00	11.00	14.67		20			57.00
1543+59	HMA	8.00	11.00	9.78		20			49.00
1544+91	HMA	6.00	11.00	7.33		20			45.00
1546+28	HMA	10.00	11.00	12.22		20			53.00
1546+34	HMA	6.00	11.00	7.33		20			45.00
1546+39	HMA	6.00	11.00	7.33		20			45.00
1546+44	HMA	6.00	11.00	7.33		20			45.00
1546+49	HMA	6.00	11.00	7.33		20			45.00
1546+55	HMA	8.00	11.00	9.78		20			49.00
1548+87	HMA	10.00	11.00	12.22		20			53.00
1548+92	HMA	6.00	11.00	7.33		20			45.00
1550+19	HMA	10.00	11.00	12.22		20			53.00
1551+51	HMA	6.00	11.00	7.33		20			45.00
1564+71	HMA	6.00	11.00	7.33		20			45.00
1564+76	HMA	8.00	11.00	9.78		20			49.00
1564+82	HMA	12.00	11.00	14.67		20			57.00
1567+35	HMA	6.00	11.00	7.33		20			45.00
1569+99	HMA	6.00	11.00	7.33		20			45.00
1577+91	HMA	6.00	11.00	7.33		20			45.00
1579+23	HMA	12.00	11.00	14.67		20			57.00
1579+28	HMA	6.00	11.00	7.33		20			45.00
1579+34	HMA	6.00	11.00	7.33		20			45.00
1580+55	HMA	6.00	11.00	7.33		20			45.00
1580+60	HMA	20.00	11.00		24.44	20	9	24.44	73.00
1580+66	HMA	6.00	11.00	7.33		20			45.00
1580+71	HMA	10.00	11.00	12.22		20			53.00
1581+87	HMA	6.00	11.00	7.33		20			45.00
1583+19	HMA	6.00	11.00	7.33		20			45.00
1585+83	HMA	6.00	11.00	7.33		20			45.00
1585+88	HMA	8.00	11.00	9.78		20			49.00
1587+15	HMA	6.00	11.00	7.33		20			45.00
1587+20	HMA	12.00	11.00	14.67		20			57.00
1588+47	HMA	6.00	11.00	7.33		20			45.00
1588+52	HMA	6.00	11.00	7.33		20			45.00
1604+31	HMA	12.00	11.00	14.67		20			57.00
1604+36	HMA	6.00	11.00	7.33		20			45.00
1610+91	HMA	12.00	11.00	14.67		20			57.00
1612+23	HMA	6.00	11.00	7.33		20			45.00

CLASS B PAVEMENT PATCHING SCHEDULE -SOUTHBOUND-									
STATION	SHOULDER TYPE	LENGTH	LANE WIDTH	CLASS B PATCH TYPE II, 15"	CLASS B PATCH TYPE III, 15"	DOWEL BARS 1 1/2"	TIE BARS, 3/4 "	PAVEMENT FABRIC	SAWCUT
SOUTHBOUND		FOOT	FOOT	SQ YD	SQ YD	EACH	EACH	SQ YD	FOOT
1617+51	HMA	10.00	11.00	12.22		20			53.00
1617+56	HMA	6.00	11.00	7.33		20			45.00
1622+79	HMA	8.00	11.00	9.78		20			49.00
1628+07	HMA	6.00	11.00	7.33		20			45.00
1638+63	HMA	8.00	11.00	9.78		20			49.00
1646+55	HMA	6.00	11.00	7.33		20			45.00
1649+19	HMA	10.00	11.00	12.22		20			53.00
1654+47	HMA	6.00	11.00	7.33		20			45.00
1658+43	HMA	6.00	11.00	7.33		20			45.00
1670+31	HMA	6.00	11.00	7.33		20			45.00
1680+87	HMA	8.00	11.00	9.78		20			49.00
1683+51	HMA	6.00	11.00	7.33		20			45.00
1683+56	HMA	6.00	11.00	7.33		20			45.00
1683+62	HMA	6.00	11.00	7.33		20			45.00
1683+67	HMA	6.00	11.00	7.33		20			45.00
1688+79	HMA	8.00	11.00	9.78		20			49.00
1691+43	HMA	8.00	11.00	9.78		20			49.00
1696+71	HMA	12.00	11.00	14.67		20			57.00
1700+67	HMA	6.00	11.00	7.33		20			45.00
1775+91	HMA	6.00	11.00	7.33		20			45.00
1779+87	HMA	6.00	11.00	7.33		20			45.00
1781+19	HMA	6.00	11.00	7.33		20			45.00
1782+51	HMA	6.00	11.00	7.33		20			45.00
1782+56	HMA	6.00	11.00	7.33		20			45.00
1786+47	HMA	6.00	11.00	7.33		20			45.00
1789+11	HMA	10.00	11.00	12.22		20			53.00
1807+59	HMA	8.00	11.00	9.78		20			49.00
1822+11	HMA	6.00	11.00	7.33		20			45.00
1823+43	HMA	6.00	11.00	7.33		20			45.00
1828+71	HMA	6.00	11.00	7.33		20			45.00
1831+35	HMA	6.00	11.00	7.33		20			45.00
1844+55	HMA	6.00	11.00	7.33		20			45.00
1844+60	HMA	6.00	11.00	7.33		20			45.00
1855+11	HMA	10.00	11.00	12.22		20			53.00
1857+75	HMA	10.00	11.00	12.22		20			53.00
1868+31	HMA	8.00	11.00	9.78		20			49.00
1870+95	HMA	6.00	11.00	7.33		20			45.00
1876+23	HMA	6.00	11.00	7.33		20			45.00
1881+51	HMA	6.00	11.00	7.33		20			45.00
1881+56	HMA	6.00	11.00	7.33		20			45.00
1884+15	HMA	6.00	11.00	7.33		20			45.00
1884+20	HMA	6.00	11.00	7.33		20			45.00
1886+79	HMA	6.00	11.00	7.33		20			45.00
1934+31	HMA	6.00	11.00	7.33		20			45.00
1936+95	HMA	6.00	11.00	7.33		20			45.00
1937+00	HMA	6.00	11.00	7.33		20			45.00
1938+27	HMA	6.00	11.00	7.33		20			45.00
1939+59	HMA	6.00	11.00	7.33		20			45.00
1939+64	HMA	6.00	11.00	7.33		20			45.00
		SUBTOTAL:		782.22	24.44	1800	9	24.44	4290.00
		ANTICIPATED FAILURES (15%):		117.33	3.67	270	2	3.67	643.50
		SOUTHBOUND PLAN QUANTITY:		900	29	2070	11	29	4934

CLASS B PAVEMENT PATCHING SCHEDULE -NORTHBOUND-									
STATION	SHOULDER TYPE	LENGTH	LANE WIDTH	CLASS B PATCH TYPE II, 15"	CLASS B PATCH TYPE III, 15"	DOWEL BARS 1 1/2"	TIE BARS, 3/4 "	PAVEMENT FABRIC	SAWCUT
		(FT)	(FT)	(SQ YD)	(SQ YD)	(EACH)	(EACH)	(SQ YD)	(FT)
NORTHBOUND		(FT)	(FT)	(SQ YD)	(SQ YD)	(EACH)	(EACH)	(SQ YD)	(FT)
1522+47	HMA	6.00	11.00	7.33		20			45.00
1525+11	HMA	6.00	11.00	7.33		20			45.00
1527+75	HMA	12.00	11.00	14.67		20			57.00
1540+95	HMA	12.00	11.00	14.67		20			57.00
1543+59	HMA	8.00	11.00	9.78		20			49.00
1544+91	HMA	6.00	11.00	7.33		20			45.00
1546+28	HMA	10.00	11.00	12.22		20			53.00
1546+34	HMA	6.00	11.00	7.33		20			45.00
1546+39	HMA	6.00	11.00	7.33		20			45.00
1546+44	HMA	6.00	11.00	7.33		20			45.00
1546+49	HMA	6.00	11.00	7.33		20			45.00
1546+55	HMA	8.00	11.00	9.78		20			49.00
1548+87	HMA	10.00	11.00	12.22		20			53.00
1548+92	HMA	6.00	11.00	7.33		20			45.00
1550+19	HMA	10.00	11.00	12.22		20			53.00
1551+51	HMA	6.00	11.00	7.33		20			45.00
1564+71	HMA	6.00	11.00	7.33		20			45.00
1564+82	HMA	12.00	11.00	14.67		20			57.00
1567+35	HMA	6.00	11.00	7.33		20			45.00
1569+99	HMA	6.00	11.00	7.33		20			45.00
1577+91	HMA	6.00	11.00	7.33		20			45.00
1579+23	HMA	12.00	11.00	14.67		20			57.00
1579+28	HMA	6.00	11.00	7.33		20			45.00
1579+34	HMA	6.00	11.00	7.33		20			45.00
1580+55	HMA	6.00	11.00	7.33		20			45.00
1580+60	HMA	20.00	11.00		24.44	20	9	24.44	73.00
1580+66	HMA	6.00	11.00	7.33		20			45.00
1580+71	HMA	10.00	11.00	12.22		20			53.00
1581+87	HMA	6.00	11.00	7.33		20			45.00
1583+19	HMA	6.00	11.00	7.33		20			45.00
1585+83	HMA	6.00	11.00	7.33		20			45.00
1585+88	HMA	8.00	11.00	9.78		20			49.00
1587+15	HMA	6.00	11.00	7.33		20			45.00
1587+20	HMA	12.00	11.00	14.67		20			57.00
1588+47	HMA	6.00	11.00	7.33		20			45.00
1588+52	HMA	6.00	11.00	7.33		20			45.00
1604+31	HMA	12.00	11.00	14.67		20			57.00
1604+36	HMA	6.00	11.00	7.33		20			45.00

CLASS B PAVEMENT PATCHING SCHEDULE -NORTHBOUND-									
STATION	SHOULDER TYPE	LENGTH	LANE WIDTH	CLASS B PATCH TYPE II, 15"	CLASS B PATCH TYPE III, 15"	DOWEL BARS 1 1/2"	TIE BARS, 3/4 "	PAVEMENT FABRIC	SAWCUT
		(FT)	(FT)	(SQ YD)	(SQ YD)	(EACH)	(EACH)	(SQ YD)	(FT)
NORTHBOUND		(FT)	(FT)	(SQ YD)	(SQ YD)	(EACH)	(EACH)	(SQ YD)	(FT)
1610+91	HMA	12.00	11.00	14.67		20			57.00
1612+23	HMA	6.00	11.00	7.33		20			45.00
1617+51	HMA	10.00	11.00	12.22		20			53.00
1617+56	HMA	6.00	11.00	7.33		20			45.00
1622+79	HMA	8.00	11.00	9.78		20			49.00
1628+07	HMA	6.00	11.00	7.33		20			45.00
1638+63	HMA	8.00	11.00	9.78		20			49.00
1646+55	HMA	6.00	11.00	7.33		20			45.00
1649+19	HMA	10.00	11.00	12.22		20			53.00
1654+47	HMA	6.00	11.00	7.33		20			45.00
1658+43	HMA	6.00	11.00	7.33		20			45.00
1670+31	HMA	6.00	11.00	7.33		20			45.00
1680+87	HMA	8.00	11.00	9.78		20			49.00
1683+51	HMA	6.00	11.00	7.33		20			45.00
1683+56	HMA	6.00	11.00	7.33		20			45.00
1683+62	HMA	6.00	11.00	7.33		20			45.00
1683+67	HMA	6.00	11.00	7.33		20			45.00
1688+79	HMA	8.00	11.00	9.78		20			49.00
1691+43	HMA	8.00	11.00	9.78		20			49.00
1696+71	HMA	12.00	11.00	14.67		20			57.00
1700+67	HMA	6.00	11.00	7.33		20			45.00
1775+91	HMA	6.00	11.00	7.33		20			45.00
1779+87	HMA	6.00	11.00	7.33		20			45.00
1781+19	HMA	6.00	11.00	7.33		20			45.00
1786+47	HMA	6.00	11.00	7.33		20			45.00
1789+11	HMA	10.00	11.00	12.22		20			53.00
1807+59	HMA	8.00	11.00	9.78		20			49.00
1822+11	HMA	6.00	11.00	7.33		20			45.00
1823+43	HMA	6.00	11.00	7.33		20			45.00
1828+71	HMA	6.00	11.00	7.33		20			45.00
1831+35	HMA	6.00	11.00	7.33		20			45.00
1844+55	HMA	6.00	11.00	7.33		20			45.00
1844+60	HMA	6.00	11.00	7.33		20			45.00
1855+11	HMA	10.00	11.00	12.22		20			53.00
1857+75	HMA	10.00	11.00	12.22		20			53.00
1868+31	HMA	8.00	11.00	9.78		20			49.00
1870+95	HMA	6.00	11.00	7.33		20			45.00
1876+23	HMA	6.00	11.00	7.33		20			45.00
1881+51	HMA	6.00	11.00	7.33		20			45.00
1881+56	HMA	6.00	11.00	7.33		20			45.00
1884+15	HMA	6.00	11.00	7.33		20			45.00
1884+20	HMA	6.00	11.00	7.33		20			45.00
1886+79	HMA	6.00	11.00	7.33		20			45.00
1934+31	HMA	6.00	11.00	7.33		20			45.00
1936+95	HMA	6.00	11.00	7.33		20			45.00
1937+00	HMA	6.00	11.00	7.33		20			45.00
1938+27	HMA	6.00	11.00	7.33		20			45.00
1939+59	HMA	6.00	11.00	7.33		20			45.00
1939+64	HMA	6.00	11.00	7.33		20			45.00
SUBTOTAL:				757.78	24.44	1740	9	24.44	4151.00
ANTICIPATED FAILURES (15%):				113.67	3.67	261	2	3.67	622.65
NORTHBOUND PLAN QUANTITY:				872	29	2001	11	29	4774
SOUTHBOUND AND NORTHBOUND PLAN QUANTITY:				1772	58	4071	22	58	9708

FILE NAME =	USER NAME = wedmore.jb	DESIGNED -	REVISED -
et:\pw\work\p1dot\wedmore.jb\d0382369\d076h16-sh-typical1.dgn		DRAWN -	REVISED -
	PLOT SCALE = 100.0000' / 1in.	CHECKED -	REVISED -
	PLOT DATE = 5/7/2015	DATE -	REVISED -

**STATE OF ILLINOIS
DEPARTMENT OF TRANSPORTATION**

CLASS B PATCHING SCHEDULE

SCALE: NTS SHEET NO. OF SHEETS STA. TO STA.

F.A.P. RTE.	SECTION	COUNTY	TOTAL SHEETS	SHEET NO.
312	(69,70)RS-3	MONROE	21	12
FED. ROAD DIST. NO. ILLINOIS FED. AID PROJECT			CONTRACT NO. 76H16	

RESURFACING SCHEDULE

STATIONS					SHOULDER TYPE	LENGTH	PAVEMENT WIDTH	EXISTING HMA SHOULDERS	*HMA SURFACE REMOVAL, 1 1/2"	BITUMINOUS MATERIAL (PRIME COAT)	TEMPORARY RAMPS	HMA SURFACE 2 1/4"	STRIP REFLECTIVE CRACK CONTROL TREATMENT
						FOOT	FOOT	FOOT	SQ YD	POUND	SQ YD	TONS	FEET
STA	1459+11.00	TO	STA	1529+77.24	HMA SHOULDERS R/L	7,066.24	22.00	6.00	21,983.86	9892.74	13.00	2,176.40	
STA	1529+77.24	TO	STA	1530+46.20	HMA SHOULDERS R/L	68.96	22.00	6.00	214.54	96.54		21.24	137.92
STA	1530+46.20	TO	STA	1591+35.62	HMA SHOULDERS R/L	6,089.42	22.00	6.00	18,944.86	8525.19		1,875.54	12,178.84
STA	1591+35.62	TO	STA	1603+81.86	HMA SHOULDERS R/L	1,246.24	22.00	6.00	3,877.19	1744.74		383.84	2,492.48
STA	1603+81.86	TO	STA	1637+13.33	HMA SHOULDERS R/L	3,331.47	22.00	6.00	10,364.57	4664.06		1,026.09	6,662.94
STA	1637+13.33	TO	STA	1645+68.13	HMA SHOULDERS R/L	854.80	22.00	6.00	2,659.38	1196.72		263.28	1,709.60
STA	1645+68.13	TO	STA	1664+14.31	HMA SHOULDERS R/L	1,846.18	22.00	6.00	5,743.67	2584.65		568.62	3,692.36
STA	1664+14.31	TO	STA	1681+61.44	HMA SHOULDERS R/L	1,747.13	22.00	6.00	5,435.52	2445.98		538.12	3,494.26
STA	1681+61.44	TO	STA	1712+11.37	HMA SHOULDERS R/L	3,049.93	22.00	6.00	9,488.67	4269.90		939.38	6,099.86
STA	1712+11.37	TO	STA	1740+01.76	HMA SHOULDERS R/L	2,790.39	22.00	6.00	8,681.21	3906.55		859.44	5,580.78
STA	1740+01.76	TO	STA	1753+71.55	HMA SHOULDERS R/L	1,369.79	22.00	6.00	4,261.57	1917.71		421.90	2,739.58
STA	1753+71.55	TO	STA	1765+20.66	HMA SHOULDERS R/L	1,149.11	22.00	6.00	3,575.01	1608.75		353.93	2,298.22
STA	1765+20.66	TO	STA	1835+48.70	HMA SHOULDERS R/L	7,028.04	22.00	6.00	21,865.01	9839.26		2,164.64	14,056.08
STA	1835+48.70	TO	STA	1838+33.50	HMA SHOULDERS R/L	284.80	22.00	6.00	886.04	398.72		87.72	569.60
STA	1838+33.50	TO	STA	1839+16.50					BRIDGE OMISSION				
STA	1839+16.50	TO	STA	1842+08.70	HMA SHOULDERS R/L	292.20	22.00	6.00	909.07	409.08		90.00	584.40
STA	1842+08.70	TO	STA	1879+27.24	HMA SHOULDERS R/L	3,718.54	22.00	6.00	11,568.79	5205.96		1,145.31	7,437.08
STA	1879+27.24	TO	STA	1884+70.02	HMA SHOULDERS R/L	542.78	22.00	6.00	1,688.65	759.89		167.18	
STA	1884+70.02	TO	STA	1898+22.00	HMA SHOULDERS R/L	1,351.98	22.00	6.00	4,206.16	1892.77		416.41	
STA	1898+22.00	TO	STA	1912+11.00	HMA SHOULDERS R/L	1,389.00	36.00	6.00	6,482.00	2916.90		700.06	
STA	1912+11.00	TO	STA	1943+41.99	HMA SHOULDERS R/L	3,130.99	22.00	6.00	9,740.86	4383.39		964.34	
STA	1943+41.99	TO	STA	1944+92.41	HMA SHOULDERS R/L	150.42	22.00	6.00	467.97	210.59		46.33	
STA	1944+92.41	TO	STA	1966+46.00	HMA SHOULDERS R/L	2,153.59	22.00	6.00	6,700.06	3015.03	13.00	663.31	4,307.18
CALCULATED QUANTITY:									159744.67	71885.10	26.00	15873.06	74041.18
PLAN QUANTITY:									159745	71885	26	15874	74041

*SHOULDER SURFACE REMOVAL IS INCLUDED IN THE HMA SURFACE REMOVAL

STATION			THERMOPLASTIC PAVEMENT MARKING						
			THERMOPLASTIC PAVEMENT MARKING-LINE 4" YELLOW SKIP DASH	THERMOPLASTIC PAVEMENT MARKING-LINE 4" YELLOW	THERMOPLASTIC PAVEMENT MARKING-LINE 4" DOUBLE YELLOW	THERMOPLASTIC PAVEMENT MARKING-LINE 4" WHITE EDGE LINE	THERMOPLASTIC PAVEMENT MARKING-LETTERS AND SYMBOLS	THERMOPLASTIC PAVEMENT MARKING-LINE 12" YELLOW DIAGONAL	THERMOPLASTIC PAVEMENT MARKING-LINE 12" WHITE STOP BAR
			FOOT	FOOT	FOOT	FOOT	SQ FT	FOOT	FOOT
1966+46.00	TO	1912+11.00	1,200.00	2,344.50		10,870.00			
1912+11.00	TO	1898+22.00			5,284.00	3,353.00	*62.20	530.00	36.00
1898+22.00	TO	1839+16.50	1,415.50	2,430.50		11,811.00			
1839+16.50	TO	1838+33.50				BRIDGE	OMISSION		
1838+33.50	TO	1459+11.00	4,843.00	10,857.00		75,845.00			
			SUBTRACT SIDE ROADS FROM 4 INCH WHITE EDGE LINES			1,886.00			
CALCULATED QUANTITY:			7458.50	15632.00	5284.00	99993.00	62.20	530.00	36.00
PLAN QUANTITY:			128336				63	566	

*4 TURN ARROWS @ 15.6 SQ FT EACH

GENERAL NOTE: PAVEMENT MARKING QUANTITIES ARE BASED ON PREVIOUS PLANS. NO PASSING ZONES AND GENERAL STRIPING SHOULD BE RE-ESTABLISHED BY THE RESIDENT ENGINEER.

STATION			TEMPORARY PAVEMENT MARKING							WORK ZONE PAVEMENT MARKING REMOVAL	
			SHORT TERM PAVEMENT MARKING AFTER MILLING	TEMPORARY PAVEMENT MARKING-LINE 4" YELLOW SKIP DASH	TEMPORARY PAVEMENT MARKING-LINE 4" YELLOW	TEMPORARY PAVEMENT MARKING-LINE 4" DOUBLE YELLOW	TEMPORARY PAVEMENT MARKING-LINE 4" WHITE EDGE LINE	TEMPORARY PAVEMENT MARKING-LETTERS AND SYMBOLS	TEMPORARY PAVEMENT MARKING-LINE 12" YELLOW DIAGONAL		TEMPORARY PAVEMENT MARKING-LINE 12" WHITE STOP BAR
			FOOT	FOOT	FOOT	FOOT	FOOT	SQ FT	FOOT	FOOT	SQ FT
1966+46.00	TO	1912+11.00	989.00	1,200.00	2,344.50		10,870.00				4,969
1912+11.00	TO	1898+22.00				5,284.00	3,353.00	62.20	530.00	36.00	3,088
1898+22.00	TO	1839+16.50	1,074.00	1,415.50	2,430.50		11,811.00				5,398
1839+16.50	TO	1838+33.50					BRIDGE	OMISSION			
1838+33.50	TO	1459+11.00	6,895.00	4,843.00	10,857.00		75,845.00				31,664
CALCULATED QUANTITY:			8958.00	7458.50	15632.00	5284.00	101879.00	62.20	530.00	36.00	45119.00
PLAN QUANTITY:			8958		130,254			63	566		45119

*4 TURN ARROWS @ 15.6 SQ FT EACH

GENERAL NOTE: PAVEMENT MARKING QUANTITIES ARE BASED ON PREVIOUS PLANS. NO PASSING ZONES AND GENERAL STRIPING SHOULD BE RE-ESTABLISHED BY THE RESIDENT ENGINEER.

SHOULDER SCHEDULE														
CENTER LINE RUMBLE STRIP AND SHOULDERS SCHEDULE														
STATIONS				SHOULDER TYPE	LENGTH	HMA SHOULDER	HMA SHOULDER	HMA SHOULDER	AGG. WEDGE	AGG. WEDGE	HMA SHOULDERS	CENTER LINE RUMBLE		
						WIDTH (3 FEET)	AREA	AREA	SHOULDER AREA	SHOULDER, TYPE B (5 FEET)	SHOULDERS	STRIPS, 8"		
					FOOT	FOOT	SQ FT	SQ YD	SQ YD	TON	TON	FOOT		
STA.	1459+11.00	TO	STA.	1529+77.24	HMA SHOULDERS R/L	7,066.24	6.00	42,397.44	4,710.83	7,851.38	494.64	593.56		
STA.	1529+77.24	TO	STA.	1530+46.20	HMA SHOULDERS R/L	68.96	6.00	413.76	45.97	76.62	4.83	5.79		
STA.	1530+46.20	TO	STA.	1591+35.62	HMA SHOULDERS R/L	6,089.42	6.00	36,536.52	4,059.61	6,766.02	426.26	511.51		
STA.	1591+35.62	TO	STA.	1603+81.86	HMA SHOULDERS R/L	1,246.24	6.00	7,477.44	830.83	1,384.71	87.24	104.68		
STA.	1603+81.86	TO	STA.	1637+13.33	HMA SHOULDERS R/L	3,331.47	6.00	19,988.82	2,220.98	3,701.63	233.20	279.84		
STA.	1637+13.33	TO	STA.	1645+68.13	HMA SHOULDERS R/L	854.80	6.00	5,128.80	569.87	949.78	59.84	71.80		
STA.	1645+68.13	TO	STA.	1664+14.31	HMA SHOULDERS R/L	1,846.18	6.00	11,077.08	1,230.79	2,051.31	129.23	155.08		
STA.	1664+14.31	TO	STA.	1681+61.44	HMA SHOULDERS R/L	1,747.13	6.00	10,482.78	1,164.75	1,941.26	122.30	146.76		
STA.	1681+61.44	TO	STA.	1715+23.44	HMA SHOULDERS R/L	3,362.00	6.00	20,172.00	2,241.33	3,735.56	235.34	282.41		
STA.	1715+23.44	TO	STA.	1734+95.44	HMA SHOULDERS R/L	1,972.00	6.00	11,832.00	1,314.67	2,191.11	138.04	165.65	1,972.00	
STA.	1734+95.44	TO	STA.	1753+71.55	HMA SHOULDERS R/L	1,876.11	6.00	11,256.66	1,250.74	2,084.57	131.33	157.59		
STA.	1753+71.55	TO	STA.	1765+20.66	HMA SHOULDERS R/L	1,149.11	6.00	6,894.66	766.07	1,276.79	80.44	96.53	1,150.00	
STA.	1765+20.66	TO	STA.	1835+48.70	HMA SHOULDERS R/L	7,028.04	6.00	42,168.24	4,685.36	7,808.93	491.96	590.36		
STA.	1835+48.70	TO	STA.	1838+33.50	HMA SHOULDERS R/L	284.80	6.00	1,708.80	189.87	316.44	19.94	23.92		
STA.	1838+33.50	TO	STA.	1839+16.50						BRIDGE	OMISSION			
STA.	1839+16.50	TO	STA.	1842+08.70	HMA SHOULDERS R/L	292.20	6.00	1,753.20	194.80	324.67	20.45	24.54		
STA.	1842+08.70	TO	STA.	1879+27.24	HMA SHOULDERS R/L	3,718.54	6.00	22,311.24	2,479.03	4,131.71	260.30	312.36		
STA.	1879+27.24	TO	STA.	1884+70.02	HMA SHOULDERS R/L	542.78	6.00	3,256.68	361.85	603.09	37.99	45.59		
STA.	1884+70.02	TO	STA.	1898+22.00	HMA SHOULDERS R/L	1,351.98	6.00	8,111.88	901.32	1,502.20	94.64	113.57		
STA.	1898+22.00	TO	STA.	1912+11.00	HMA SHOULDERS R/L	1,389.00	6.00	8,334.00	926.00	1,543.33	97.23	116.68		
STA.	1912+11.00	TO	STA.	1943+41.99	HMA SHOULDERS R/L	3,130.99	6.00	18,785.94	2,087.33	3,478.88	219.17	263.00		
STA.	1943+41.99	TO	STA.	1944+92.41	HMA SHOULDERS R/L	150.42	6.00	902.52	100.28	167.13	10.53	12.64		
STA.	1944+92.41	TO	STA.	1966+46.00	HMA SHOULDERS R/L	2,153.59	6.00	12,921.54	1,435.73	2,392.88	150.75	180.90		
										CALCULATED QUANTITY:		3545.64	4254.77	3122.00
										PLAN QUANTITY:		3546	4255	3122

NOTE: MILLING, BITUMINOUS MATERIAL PRIME COAT FOR SHOULDERS ARE INCLUDED IN RESURFACING SCHEDULE

FILE NAME =	USER NAME = wedmore.jb	DESIGNED -	REVISED -	STATE OF ILLINOIS DEPARTMENT OF TRANSPORTATION	RUMBLE STRIP AND SHOULDER SCHEDULE	F.A.P. RTE.	SECTION	COUNTY	TOTAL SHEETS	SHEET NO.
et:\pw\work\p\dot\wedmore.jb\d0382369\d076h16-sh1-typicals.dgn	DRAWN -	REVISED -	312			(69,70)RS-3	MONROE	21	16	
PLOT SCALE = 100.0000' / 1in.	CHECKED -	REVISED -	CONTRACT NO. 76H16							
PLOT DATE = 5/7/2015	DATE -	REVISED -	SCALE: NTS			SHEET NO. OF SHEETS	STA. TO STA.	FED. ROAD DIST. NO.	ILLINOIS FED. AID PROJECT	

RAISED REFLECTIVE PAVEMENT MARKER SCHEDULE										
STATIONS					LENGTH	RAISED REFLECTIVE PAVEMENT MARKER REMOVAL	RAISED REFLECTIVE PAVEMENT ONE -WAY CRYSTAL MARKER	RAISED REFLECTIVE PAVEMENT TWO -WAY AMBER MARKER		
					FOOT	EACH	EACH	EACH		
STA.	1459+11.00	TO	STA.	1529+77.24	7,066.24	89		89		
STA.	1529+77.24	TO	STA.	1530+46.20	68.96	1		1		
STA.	1530+46.20	TO	STA.	1591+35.62	6,089.42	77		79		
STA.	1591+35.62	TO	STA.	1603+81.86	1,246.24	16		16		
STA.	1603+81.86	TO	STA.	1637+13.33	3,331.47	42		42		
STA.	1637+13.33	TO	STA.	1645+68.13	854.80	11		11		
STA.	1645+68.13	TO	STA.	1664+14.31	1,846.18	24		24		
STA.	1664+14.31	TO	STA.	1681+61.44	1,747.13	22		22		
STA.	1681+61.44	TO	STA.	1706+36.00	2,474.56	31		31		
**STA.	1706+36.00	TO	STA.	1745+21.00	3,885.00	98		98		
STA.	1745+21.00	TO	STA.	1753+71.55	850.55	11		11		
STA.	1753+71.55	TO	STA.	1765+20.66	1,149.11	15		14		
STA.	1765+20.66	TO	STA.	1835+48.70	7,028.04	88		88		
STA.	1835+48.70	TO	STA.	1838+33.50	284.80	4		4		
STA.	1838+33.50	TO	STA.	1839+16.50			BRIDGE OMISSION			
STA.	1839+16.50	TO	STA.	1842+08.70	292.20	4		4		
STA.	1842+08.70	TO	STA.	1879+27.24	3,718.54	47		47		
STA.	1879+27.24	TO	STA.	1884+70.02	542.78	7		7		
STA.	1884+70.02	TO	STA.	1898+22.00	1,351.98	17		17		
STA.	1898+22.00	TO	STA.	1912+11.00	1,389.00	92	16	76		
STA.	1912+11.00	TO	STA.	1943+41.99	3,130.99	40		39		
STA.	1943+41.99	TO	STA.	1944+92.41	150.42	2		2		
STA.	1944+92.41	TO	STA.	1966+46.00	2,153.59	27		27		
					CALCULATED QUANTITY:	765	16	749		
					PLAN QUANTITY:	765		765		

** RAISED REFLECTIVE PAVEMENT TWO-WAY AMBER MARKERS ARE PLACED AT 40 FT CENTERS FROM STATION 1745+21 TO 1706+36

HMA SURFACE REMOVAL- BUTT JOINT					
STATIONS		PAVEMENT WIDTH	SHOULDERS WIDTH	BUTT-JOINT LENGTH	HMA SURFACE REMOVAL-BUTT JOINT
		FOOT	FOOT	FOOT	SQ YD
STA.	1459+11.00	22.00	6.00	15.00	46.67
STA.	1838+33.50	22.00	6.00	15.00	46.67
STA.	1839+16.50	22.00	6.00	15.00	46.67
STA.	1966+46.00	22.00	6.00	15.00	46.67
CALCULATED QUANTITY:					186.67
PLAN QUANTITY:					187

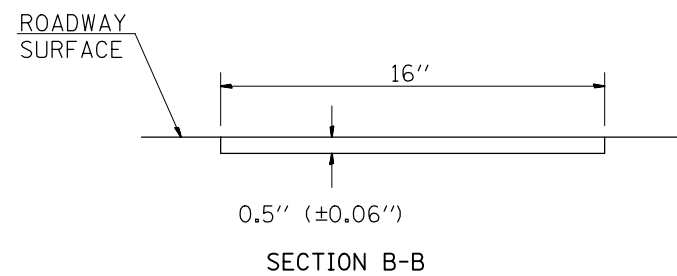
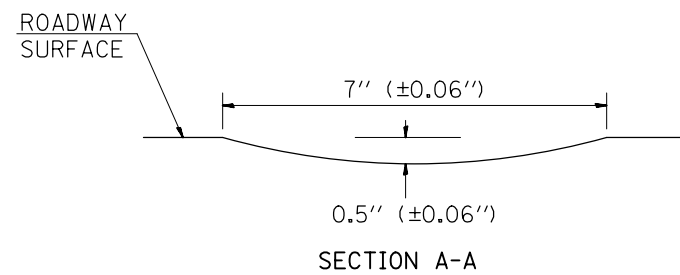
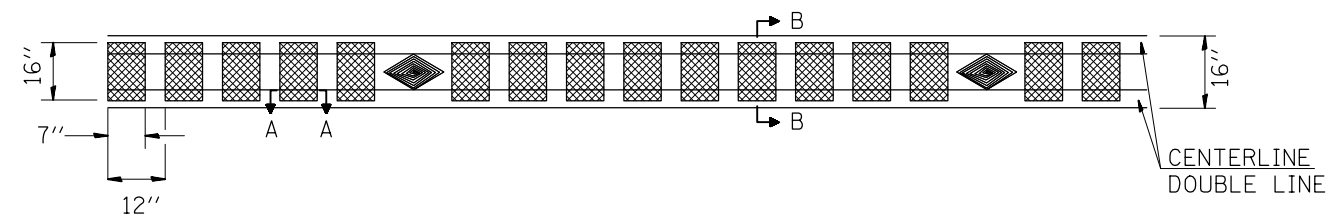
SHOULDER RUMBLE STRIP					
STATIONS					SHOULDER RUMBLE STRIPS, 8 INCH (LEFT AND RIGHT)
					FOOT
STA.	1459+11.00	TO	STA.	1838+33.50	75,845.00
STA.	1838+33.50	TO	STA.	1839+16.50	BRIDGE OMISSION
STA.	1839+16.50	TO	STA.	1966+46.00	25,459.00
SUBTRACT SIDE ROADS AND ENTRANCES					5,115.50
CALCULATED QUANTITY:					96188.50
PLAN QUANTITY:					96189

SURVEY MONUMENT COVER ASSEMBLY			
P. T.	STA.	1459+12	1
P. C.	STA.	1528+81	1
P. I.	STA.	1574+87	1
P. T.	STA.	1592+96	1
P. C.	STA.	1602+22	1
P. I.	STA.	1612+20	1
P. T.	STA.	1638+73	1
P. C.	STA.	1644+08	1
P. T.	STA.	1665+74	1
P. C.	STA.	1680+01	1
P. T.	STA.	1713+71	1
P. C. C	STA.	1716+76	1
P. C.	STA.	1721+29	1
P. T.	STA.	1723+06	1
P. C. C	STA.	1731+73	1
P. C.	STA.	1738+42	1
P. T.	STA.	1755+32	1
P. C.	STA.	1763+61	1
P. I.	STA.	1810+20	1
P. I.	STA.	1859+27	1
P. T.	STA.	1886+30	1
P. C.	STA.	1941+82	1
P. I.	STA.	1965+83	1
PLAN QUANTITY:			23

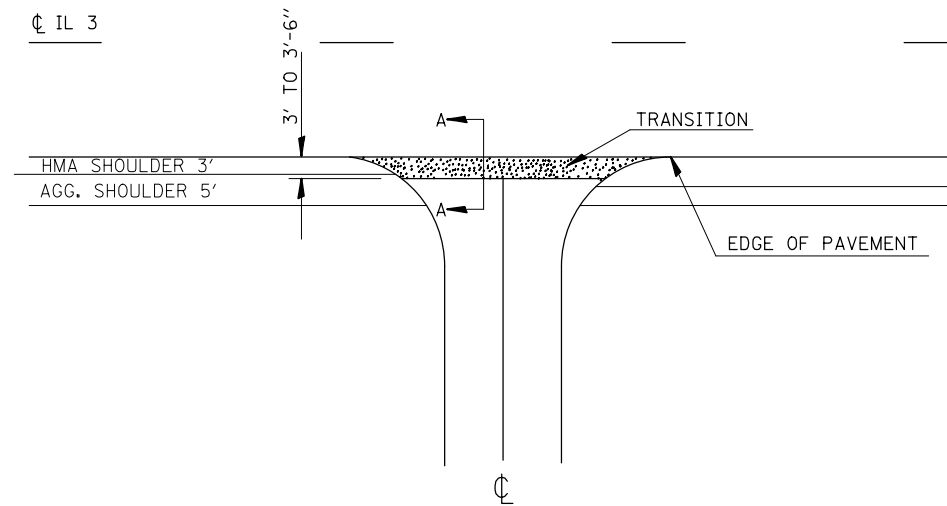
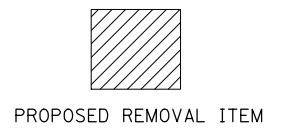
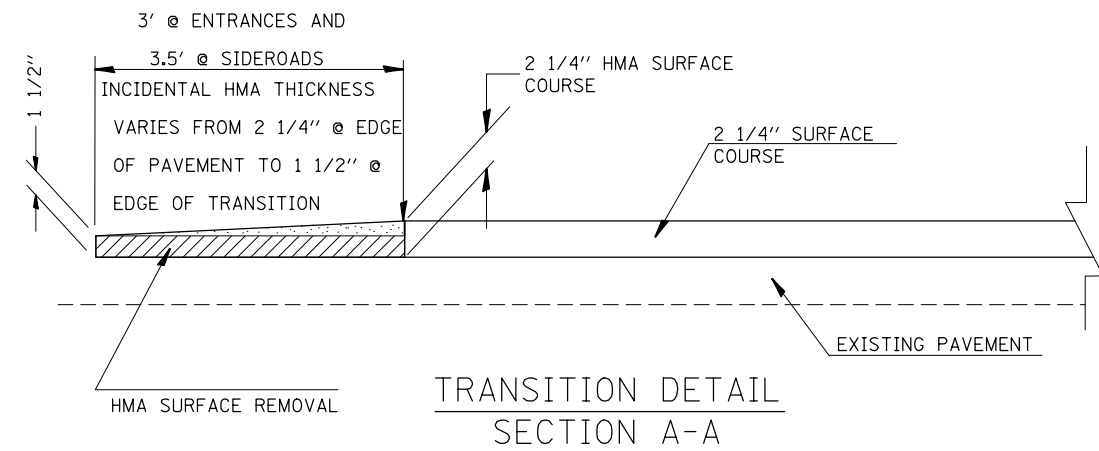
GUARDRAIL SCHEDULE										
LOCATION			LENGTH	R/L	STEEL PLATE BEAM GUARDRAIL, TYPE A, 6 FOOT POSTS	TRAFFIC BARRIER TERMINAL, TYPE 1, (SPECIAL) TANGENT	TRAFFIC BARRIER TERMINAL, TYPE 6	GUARDRAIL MARKERS, TYPE A	TERMINAL MARKERS DIRECT APPLIED	CONCRETE CURB, TYPE B
STA	TO	STA	FOOT		FOOT	EACH	EACH	EACH	EACH	FOOT
1836+39.50	TO	1838+33.50	193.75	R	100.00	1	1	3	1	15.625
1839+16.50	TO	1841+10.25	193.75	R	100.00	1	1	3	1	15.625
1836+39.50	TO	1838+33.50	193.75	L	100.00	1	1	3	1	15.625
1839+16.50	TO	1841+10.25	193.75	L	100.00	1	1	3	1	15.625
TOTAL					400	4	4	12	4	63

GUARDRAIL REMOVAL				
STA	TO	STA	R/L	LENGTH FT
1839+96.5	TO	1839+16.50	R	80
1838+33.50	TO	1837+53.50	R	80
1839+96.5	TO	1839+16.50	L	80
1838+33.50	TO	1837+53.50	L	80
TOTAL				320

CENTERLINE RUMBLE STRIP DETAIL

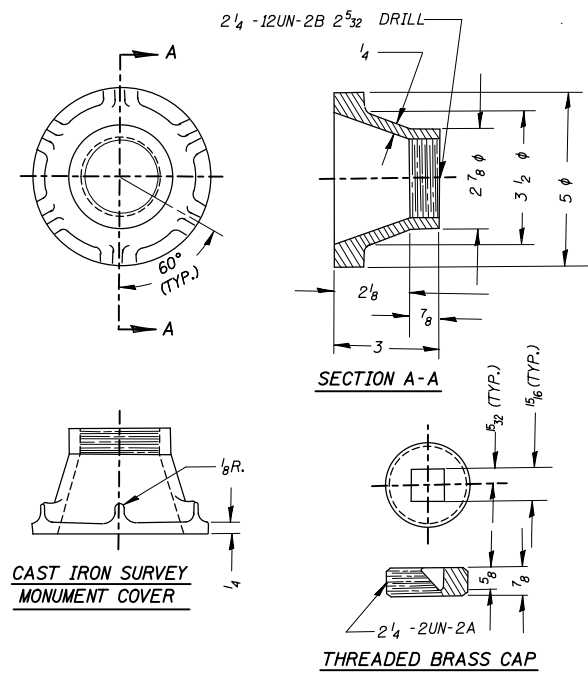


NOTE: THE PROPOSED CENTERLINE PAVEMENT MARKINGS SHALL BE PLACED AFTER THE CONSTRUCTION OF THE RUMBLE STRIP. RUMBLE STRIP IS TO BE SPACED BETWEEN RRPM'S.



SIDEROADS AND ENTRANCES DETAIL

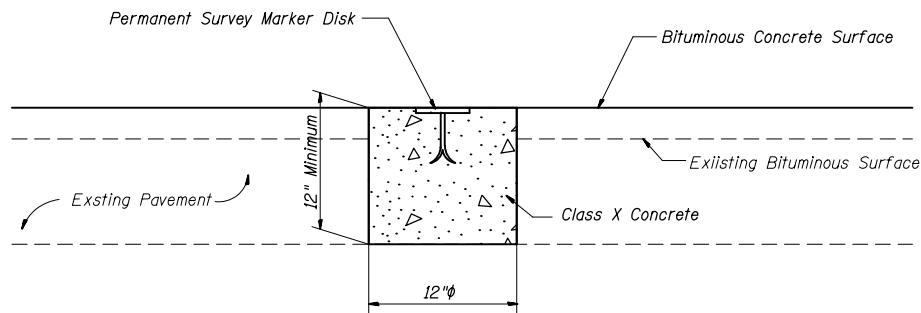
FILE NAME =	USER NAME = wedmore_jb	DESIGNED -	REVISED -	STATE OF ILLINOIS DEPARTMENT OF TRANSPORTATION	DETAIL SHEET			F.A.P. RTE.	SECTION	COUNTY	TOTAL SHEETS	SHEET NO.
et:\pw_work\pwork\wedmore_jb\d0382369\d076h16-sh-typical1.s.dgn		DRAWN -	REVISED -		312	(69,70)RS-3	MONROE	21	18			
	PLOT SCALE = 100.0000' / 1in.	CHECKED -	REVISED -		CONTRACT NO. 76H16							
	PLOT DATE = 5/7/2015	DATE -	REVISED -		SCALE: NTS	SHEET NO. OF SHEETS	STA.	TO STA.	FED. ROAD DIST. NO.	ILLINOIS FED. AID PROJECT		



SURVEY MONUMENT COVER ASSEMBLY DETAIL

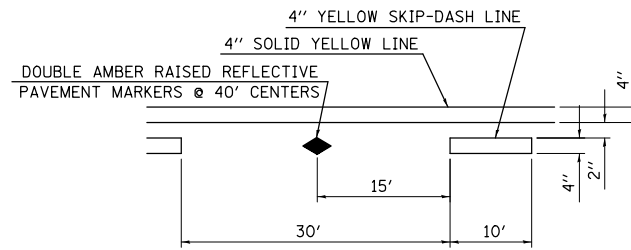
NOTES:

ALL DIMENSIONS IN INCHES
 ALL RADII ARE 3/8" UNLESS SPECIFIED
 ALL CHAMFERS ARE 45°
 ROUND ALL SHARP EDGES
 USE THREADS AND DIMENSIONS AS SPECIFIED OR EQUIV. BY APPROVAL OF THE ENGINEER.
 THE SURVEY MONUMENT COVER ASSEMBLY SHOWN IS AN EXAMPLE. OTHER MODELS, SIMILAR IN DESIGN, MAY BE USED WITH THE APPROVAL OF THE ENGINEER.
 THE THREADS OF THE CAP AND COVER WILL BE COATED WITH PIPE TAPE OR PIPE THREAD COMPOUND PRIOR TO INSTALLATION

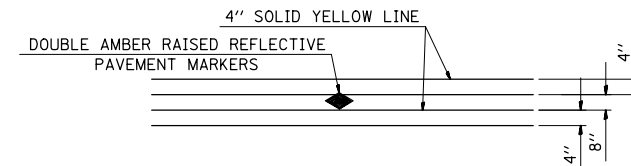


DETAIL OF PERMANENT SURVEY MARKER (SPECIAL)

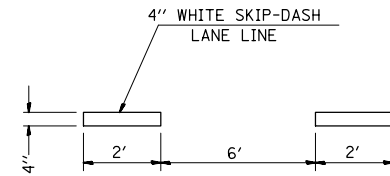
NOTE: Class X Concrete shall be incidental to cost of Permanent Survey Marker (Special)



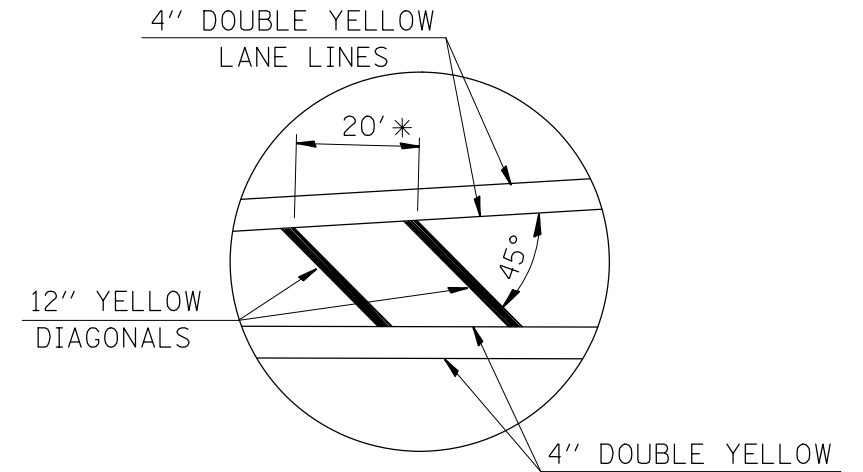
TYPICAL APPLICATION FOR BI-DIRECTIONAL TURN LANE WITH RAISED REFLECTIVE PAVEMENT MARKERS



TYPICAL APPLICATION FOR DOUBLE YELLOW LANE LINES WITH RAISED REFLECTIVE PAVEMENT MARKERS

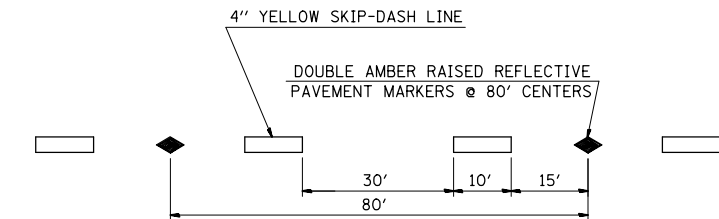


TYPICAL APPLICATION FOR WHITE AUX SKIP-DASH LANE LINES

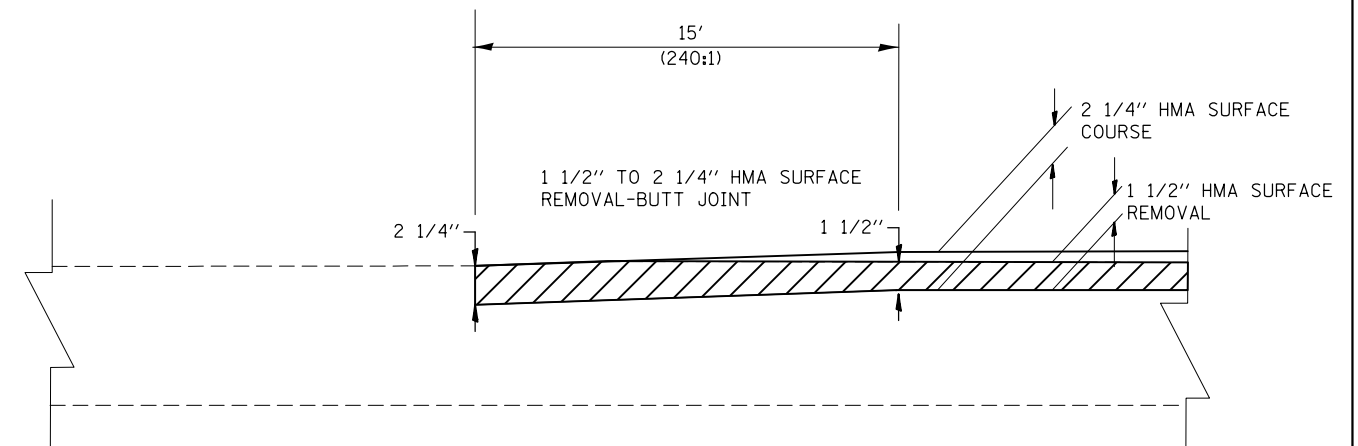


TYPICAL APPLICATION FOR MEDIAN STRIPING

* 30' WHEN POSTED SPEED ≥ 45 MPH

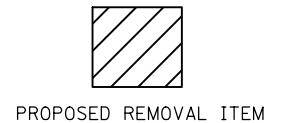


TYPICAL APPLICATION FOR YELLOW SKIP-DASH LINES WITH RAISED REFLECTIVE PAVEMENT MARKERS



BUTT JOINT DETAIL

HMA
 STA. 1459+11
 STA. 1838+33.50
 STA. 1839+16.50
 STA. 1966+46



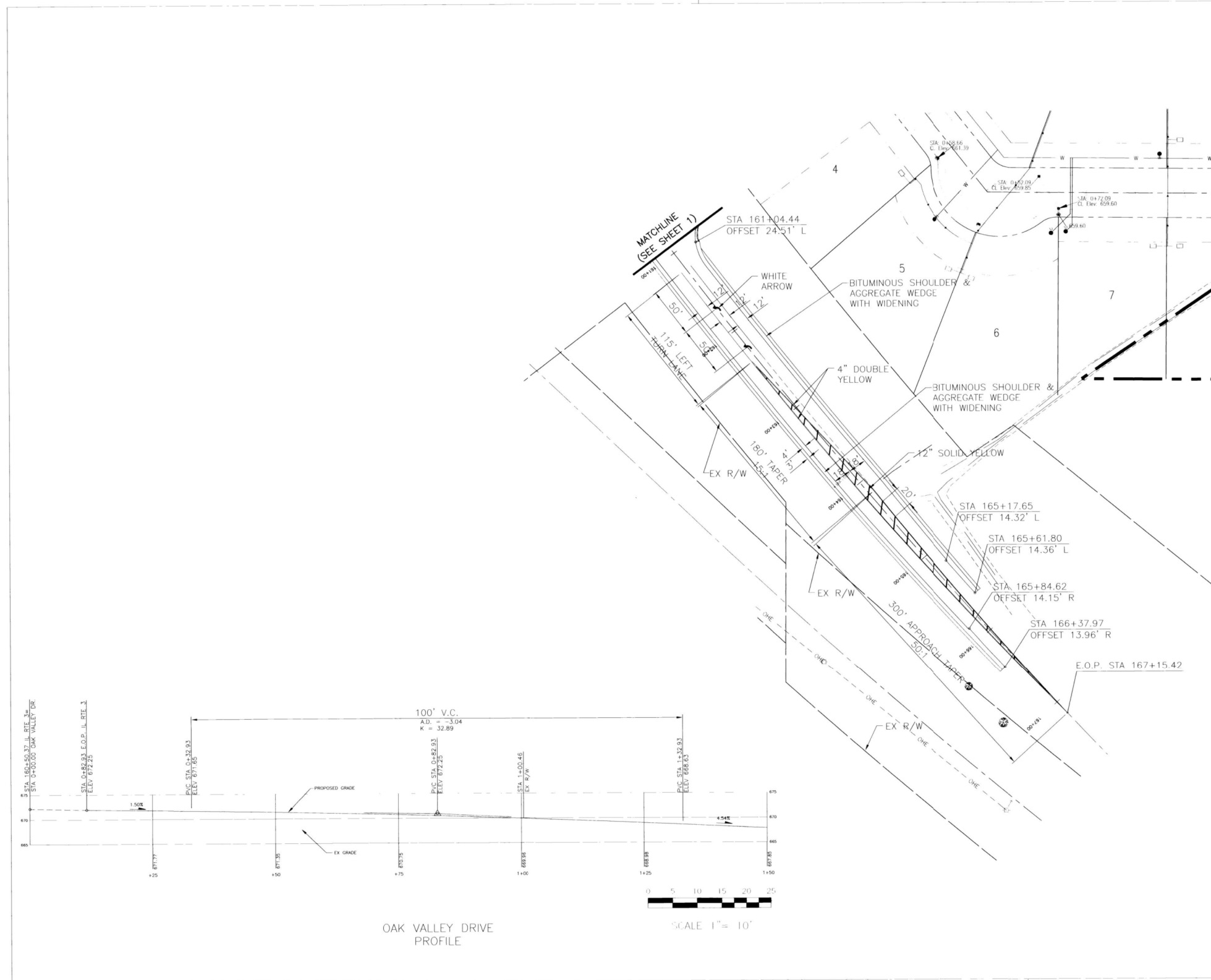
FILE NAME =	USER NAME = wedmore JB	DESIGNED -	REVISED -
et:\pw\work\p1dot\wedmore JB\d0382369\d076h16-sh-typical1.s.dgn		DRAWN -	REVISED -
		CHECKED -	REVISED -
		DATE -	REVISED -

**STATE OF ILLINOIS
 DEPARTMENT OF TRANSPORTATION**

DETAIL SHEET

SCALE: NTS SHEET NO. OF SHEETS STA. TO STA.

F.A.P. RTE.	SECTION	COUNTY	TOTAL SHEETS	SHEET NO.
312	(69,70)RS-3	MONROE	21	19
CONTRACT NO. 76H16				
FED. ROAD DIST. NO. ILLINOIS FED. AID PROJECT				



FOR REFERENCE ONLY

INTERSECTION DESIGN STUDY
(ILLINOIS ROUTE 3)
WITH
(LOOK) (LOOK)
SEC. NO. COUNTY: MONROE
REV. NO.
DESIGNED BY: STEVE STRIMMANN
DATE: 07-16-04
SATSFACTORY DISTRICT GEOMETRICS ENGINEER DATE
SATSFACTORY DISTRICT STUDIES AND PLANS ENGINEER DATE
SATSFACTORY DISTRICT OPERATIONS ENGINEER DATE
APPROVED DISTRICT ENGINEER DATE
I.D.S. SHEET 2 OF 2

FILE NAME =	USER NAME = wedmore.jb	DESIGNED -	REVISED -
et:\pwork\pwork\wedmore.jb\d0382369\d076h16-shr-typical.dgn		DRAWN -	REVISED -
PLOT SCALE = 100.0000' / in.		CHECKED -	REVISED -
PLOT DATE = 5/7/2015		DATE -	REVISED -

**STATE OF ILLINOIS
DEPARTMENT OF TRANSPORTATION**

EXHIBIT SHEET

SCALE: NTS SHEET NO. OF SHEETS STA. TO STA.

F.A.P. RTE.	SECTION	COUNTY	TOTAL SHEETS	SHEET NO.
312	(69,70)RS-3	MONROE	21	21
FED. ROAD DIST. NO. ILLINOIS FED. AID PROJECT			CONTRACT NO. 76H16	