

STATE OF ILLINOIS
DEPARTMENT OF TRANSPORTATION
DIVISION OF HIGHWAYS

PROPOSED
HIGHWAY PLANS

FAP 821 (IL 15)
OVER CASEY FORK
D9 CM BRIDGE REPAIR 2015-2
JEFFERSON COUNTY

C-99-061-14

F.A.P. RTE.	SECTION	COUNTY	TOTAL SHEETS	SHEET NO.
821		JEFFERSON	15	1
		ILLINOIS	CONTRACT NO. 78432	

*D9 CM BRIDGE REPAIR 2015-2

FOR INDEX OF SHEETS, SEE SHEET NO. 2

TRAFFIC DATA

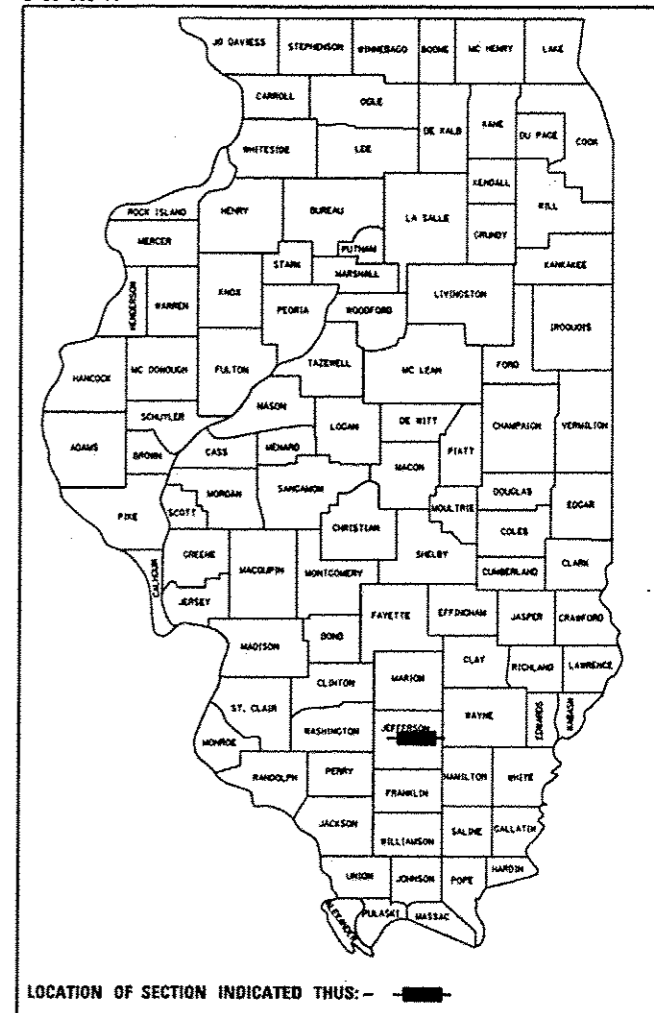
IL 15 TRAFFIC DATA

2013 ADT = 7,100
5 % TRUCKS

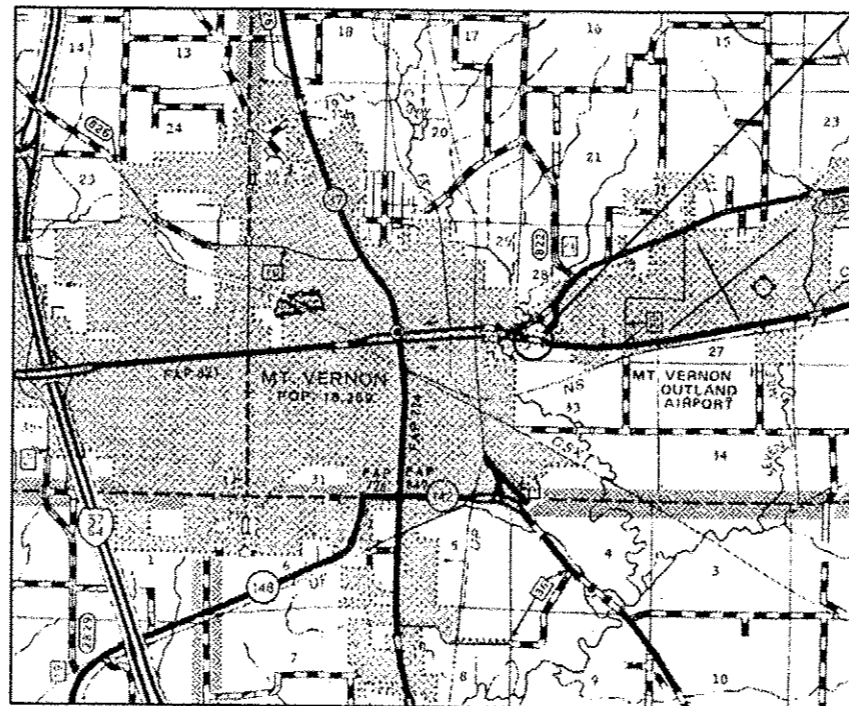
TOWNSHIP:

MOUNT VERNON

D-99-053-14



PROJECT LOCATION
SN 041-0026



GROSS LENGTH = 336 FT.
NET LENGTH = 336 FT.

J.U.L.I.E.
JOINT UTILITY LOCATION INFORMATION FOR EXCAVATION
1-800-892-0123
OR 811

PROJECT ENGINEER: T. WAYNE HALSTEAD
PROJECT MANAGER: DAVID PICHE (618) 351-5227

CONTRACT NO. 78432

STATE OF ILLINOIS
DEPARTMENT OF TRANSPORTATION
DIVISION OF HIGHWAYS

SUBMITTED May 8 20 15

Jeffrey Keenan
DEPUTY DIRECTOR OF HIGHWAYS, REGION ENGINEER

June 26 20 15
John D. Baranzelli PE
ENGINEER OF DESIGN AND ENVIRONMENT

June 26 20 15
Omer Osman PE
DIRECTOR OF HIGHWAYS, CHIEF ENGINEER

PRINTED BY THE AUTHORITY
OF THE STATE OF ILLINOIS

GENERAL NOTES

- 1) THE THICKNESS OF HOT-MIX ASPHALT MIXTURE SHOWN ON THE PLANS IS THE NOMINAL THICKNESS. DEVIATIONS FROM THE NOMINAL THICKNESS WILL BE PERMITTED WHEN SUCH DEVIATIONS OCCUR DUE TO IRREGULARITIES IN THE EXISTING SURFACE OR BASE ON WHICH THE HOT-MIX ASPHALT MIXTURE IS PLACED.
- 2) FACTORS USED FOR ESTIMATING PLAN QUANTITIES ARE AS FOLLOWS AND SHALL NOT BE USED FOR THE BASIS OF FINAL QUANTITIES:

ALL HOT MIX ASPHALT	2.016 TONS/CU YD
BITUMINOUS MATERIALS: ON PAVEMENT	0.05 POUND/SQ FT
- 3) THE ADVANCE DETECTOR LOOPS ARE TYPICALLY LOCATED 275 FEET IN ADVANCE OF THE STOP BAR. THE BUREAU OF OPERATIONS SHOULD APPROVE THE LOOP LOCATIONS PRIOR TO INSTALLATION.
- 4) IN ADDITION TO THE REQUIREMENTS OF ARTICLE 107.16 THE CONTRACTOR SHALL PROTECT THE SURFACE OF ALL BRIDGE DECKS AND BRIDGE APPROACH PAVEMENTS IN A MANNER SATISFACTORY TO THE ENGINEER BEFORE ANY EQUIPMENT IS ALLOWED TO CROSS THE STRUCTURE. PROTECTION SHALL BE PROVIDED FOR ALL EQUIPMENT AS DEFINED IN ARTICLE 101.16 REGARDLESS IF TRACK MOUNTED OR WHEELED.
- 5) TRIM EDGES OF EXISTING HOT MIX ASPHALT SURFACE FLUSH WITH EXISTING PAVEMENT PRIOR TO CONSTRUCTING NEW BASE COURSE WIDENING.
- 6) IF THE CONTRACTOR ELECTS TO USE P.C.C. BASE COURSE WIDENING, SUCH WIDENING SHALL BE PRIMED ACCORDING TO ARTICLE 406.02. EXCEPT THIS WORK WILL NOT BE PAID FOR SEPARATELY BUT SHALL BE INCLUDED IN THE COST OF THE WIDENING.
- 7) THE CENTERLINE PAVEMENT MARKING SHOULD BE REMOVED FROM THE STOP BAR TO THE SAND ATTENUATORS OR DRUMS. EDGE LINE PAVEMENT MARKING SHOULD BE REMOVED IF A 10 FOOT LANE WIDTH CANNOT BE MAINTAINED. TEMPORARY EDGE LINES SHOULD BE INSTALLED WHEN THE EDGE LINES ARE REMOVED.
- 8) ANY TIME THE CONCRETE BARRIER IS NOT IN THE PROPER POSITION, FLAGGERS SHALL BE IN PLACE TO CONTROL TRAFFIC. THE TEMPORARY TRAFFIC SIGNALS SHALL BE SET TO FLASH ALL RED.
- 9) COMMITMENTS: NONE AS OF MAY 8, 2015.

MIXTURE REQUIREMENTS

Location(s):	Base Course Widening
Mixture Use(s):	Hot-Mix Asphalt Binder Course, N90, IL-19.0mm Fine Grade
AC/PG:	PG64-22
ABR % (Max):	See Special Provision
Design Air Voids:	4.0 %, 90 Gyration Design
Mixture Composition: (Gradation Mixture)	IL-19.0mm Fine Grade
Friction Aggregate:	None
Quality Management Program:	QCQA

Location(s):	Hot-Mix Asphalt Surface Course
Mixture Use(s):	Hot-Mix Asphalt Surface Course, Mix E, N70 Fine Graded
AC/PG:	PG64-22
ABR % (Max):	See Special Provision
Design Air Voids:	4.0 %, 70 Gyration Design
Mixture Composition: (Gradation Mixture)	IL-9.5 mm Fine Graded
Friction Aggregate:	E Surface
Quality Management Program:	QCQA

STANDARDS

000001-06	STANDARD SYMBOLS, ABBREVIATIONS AND PATTERNS
701001-02	OFF-ROAD, 2L2W MORE THAN 15' FROM PAVEMENT EDGE
701006-05	OFF-ROAD, 2L2W 15' TO 24" FROM PAVEMENT EDGE
701201-04	LANE CLOSURE, 2L2W DAY ONLY, FOR SPEEDS ≥ 45 MPH
701321-14	LANE CLOSURE, 2L2W BRIDGE REPAIR WITH BARRIER
701326-04	LANE CLOSURE, 2L2W PAVEMENT WIDENING, FOR SPEEDS ≥ 45 MPH
701901-04	TRAFFIC CONTROL DEVICES
704001-07	TEMPORARY CONCRETE BARRIER
780001-05	TYPICAL PAVEMENT MARKINGS
781001-03	TYPICAL APPLICATIONS RAISED REFLECTIVE PAVEMENT MARKERS

INDEX OF SHEETS

1	COVER SHEET
2	INDEX OF SHEETS; GENERAL NOTES; STANDARDS
3-5	SUMMARY OF QUANTITIES
6	GENERAL PLAN AND ELEVATION
7	STAGING TYPICAL SECTION
8	STAGING DETAILS
9	JOINT REPAIR DETAILS
10	EAST ABUTMENT BEARING DETAILS
11	WEST ABUTMENT BEARING DETAILS
12	PERFORMED JOINT STRIP SEAL
13	SUBSTRUCTURE REPAIR DETAILS
14	Temp. Concrete Barrier (R-27)
15	Butt Joint Details

Prepared By:	<i>[Signature]</i> DISTRICT STUDIES & PLANS ENGINEER
Examined By:	<i>[Signature]</i> DISTRICT LAND ACQUISITION ENGINEER
Examined By:	<i>[Signature]</i> DISTRICT PROGRAM DEVELOPMENT ENGINEER
Examined By:	<i>[Signature]</i> DISTRICT OPERATIONS ENGINEER
Examined By:	<i>[Signature]</i> DISTRICT PROJECT IMPLEMENTATION ENGINEER
Examined By:	<i>[Signature]</i> DISTRICT CONSTRUCTION ENGINEER
Examined By:	<i>[Signature]</i> DISTRICT MATERIALS ENGINEER

*09 CM BRIDGE REPAIR 2015-2

FILE NAME *	USER NAME * holsteadtw	DESIGNED - TWH	REVISED -
pl:\IL084E01INTEG.illinois.gov\PWIDOT\Documents\DOT Offices\District 9\Projects\Con-ORASH\nt.2015\781\WHA\0Data\CAD\shoets		CHECKED -	REVISED - plm,dgn
PLOT SCALE * 100.0000 " = 1"		DATE -	REVISED -
PLOT DATE * 5/1/2015			

STATE OF ILLINOIS
DEPARTMENT OF TRANSPORTATION

SIGNATURES, GENERAL NOTES, STANDARDS, & INDEX OF SHEETS

SCALE: SHEET OF SHEETS STA. TO STA.

F.A.P. RTE.	SECTION	COUNTY	TOTAL SHEETS	SHEET NO.
821		JEFFERSON	15	2
			CONTRACT NO. 78432	
ILLINOIS FED. AID PROJECT				

SUMMARY OF QUANTITIES

CODE NUMBER	ITEM DESCRIPTION	UNIT	100% STATE
			RURAL
			FAP 821 IL 15
			ROADWAY 0014
35650500	BASE COURSE WIDENING 10"	SO YD	164
40600275	BITUMINOUS MATERIALS (PRIME COAT)	POUND	210
40600982	HOT-MIX ASPHALT SURFACE REMOVAL - BUTT JOINT	SO YD	200
40600990	TEMPORARY RAMP	SO YD	53
50102400	CONCRETE REMOVAL	CU YD	12.2
50300255	CONCRETE SUPERSTRUCTURE	CU YD	13.1
50500405	FURNISHING AND ERECTING STRUCTURAL STEEL	POUND	2510
50800205	REINFORCEMENT BARS, EPOXY COATED	POUND	1240
50800515	BAR SPLICERS	EACH	24
52000110	PREFORMED JOINT STRIP SEAL	FOOT	93
52100010	ELASTOMERIC BEARING ASSEMBLY, TYPE I	EACH	8
52100020	ELASTOMERIC BEARING ASSEMBLY, TYPE II	EACH	8

12

FILE NAME :	USER NAME : halsteadw	DESIGNED : TWH	REVISED :	STATE OF ILLINOIS DEPARTMENT OF TRANSPORTATION	SUMMARY OF QUANTITIES	F.A.P. RTE. 821	SECTION *	COUNTY JEFFERSON	TOTAL SHEETS 15	SHEET NO. 3
CONTRACT NO. 78432	ILLINOIS FED. AID PROJECT									

SUMMARY OF QUANTITIES - CONT

CODE NUMBER	ITEM DESCRIPTION	UNIT	100% STATE
			RURAL
			FAP 821 IL 15
			ROADWAY 0014
70400200	RELOCATE TEMPORARY CONCRETE BARRIER	FOOT	350
70600250	IMPACT ATTENUATORS, TEMPORARY (NON- REDIRECTIVE), TEST LEVEL 3	EACH	2
70600350	IMPACT ATTENUATORS, RELOCATE (NON- REDIRECTIVE), TEST LEVEL 3	EACH	2
* 78001110	PAINT PAVEMENT MARKING - LINE 4"	FOOT	1440
* 78100100	RAISED REFLECTIVE PAVEMENT MARKER	EACH	2
* 78100105	RAISED REFLECTIVE PAVEMENT MARKER (BRIDGE)	EACH	2
78300100	PAVEMENT MARKING REMOVAL	SO FT	280
78300200	RAISED REFLECTIVE PAVEMENT MARKER REMOVAL	EACH	2
* 86200300	UNINTERRUPTABLE POWER SUPPLY, EXTENDED	EACH	1
Z0001899	JACK AND REMOVE EXISTING BEARINGS	EACH	16
Z0012754	STRUCTURAL REPAIR OF CONCRETE (DEPTH EQUAL TO OR LESS THAN 5 INCHES)	SO FT	39
X4063392	HOT-MIX ASPHALT SURFACE COURSE, IL-9.5FG, N70	TON	74

* SPECIALTY ITEM

FILE NAME *	USER NAME * halssteadw	DESIGNED - TWH	REVISED -	STATE OF ILLINOIS DEPARTMENT OF TRANSPORTATION	SUMMARY OF QUANTITIES	F.A.P. RTE.	SECTION	COUNTY	TOTAL SHEETS	SHEET NO.	
path\ILBBAEBID\INTEG.illinois.gov\PIWIDOT\Documents\DOT Offices\District 9\Projects\Com-BBANN-2015\70701\CAD\Sheet	BBANN-2015\70701\CAD\Sheet	CHECKED -	REVISED -			821		JEFFERSON	15	5	
PLOT SCALE * 100.0000' / 1" =	DATE -	CHECKED -	REVISED -			CONTRACT NO. 78432		ILLINOIS FED. AID PROJECT			
PLOT DATE * 5/7/2015	DATE -	CHECKED -	REVISED -			SCALE:	SHEET NO. OF SHEETS	STA.	TO STA.		

*09 CM BRIDGE REPAIR 2015-2

GENERAL NOTES

Plan dimensions and details relative to existing plans are subject to nominal construction variations. The Contractor shall field verify existing dimensions and details affecting new construction and make necessary approved adjustments prior to construction or ordering of materials. Such variations shall not be cause for additional compensation for a change in scope of the work, however, the Contractor will be paid for the quantity actually furnished at the unit price bid for the work.

Joint openings shall be adjusted according to Article 520.04 of the Std. Specs. when the deck is poured at an ambient temperature other than 50°F.

Prior to pouring the new concrete deck section, all heavy or loose rust, loose mill scale, and other loose or potentially detrimental foreign material shall be removed from the surfaces in contact with concrete. Tightly adhered paint may remain unless otherwise noted. Removal shall be accomplished by methods that will not damage the steel and the cost will be included in the pay item covering removal of the existing concrete.

All structural steel shall be shop painted with Inorganic zinc rich primer per AASHTO M300, Type I. Cost included with Furnishing and Erecting Structural Steel.

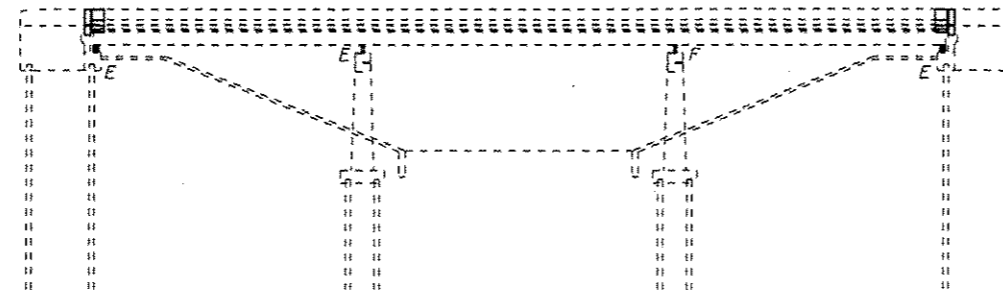
If the analysis submitted to the Contractor for the jacking/temporary support system to be used show temporary stiffeners are required to prevent web crippling or buckling, the stiffeners shall be steel and bolted to the web. If stiffeners are not required, hardwood timbers shall be installed tightly between the top and bottom flange to prevent flange rotation.

The existing structural steel coating contains lead. The Contractor shall take appropriate precautions to deal with the presence of lead on this project.

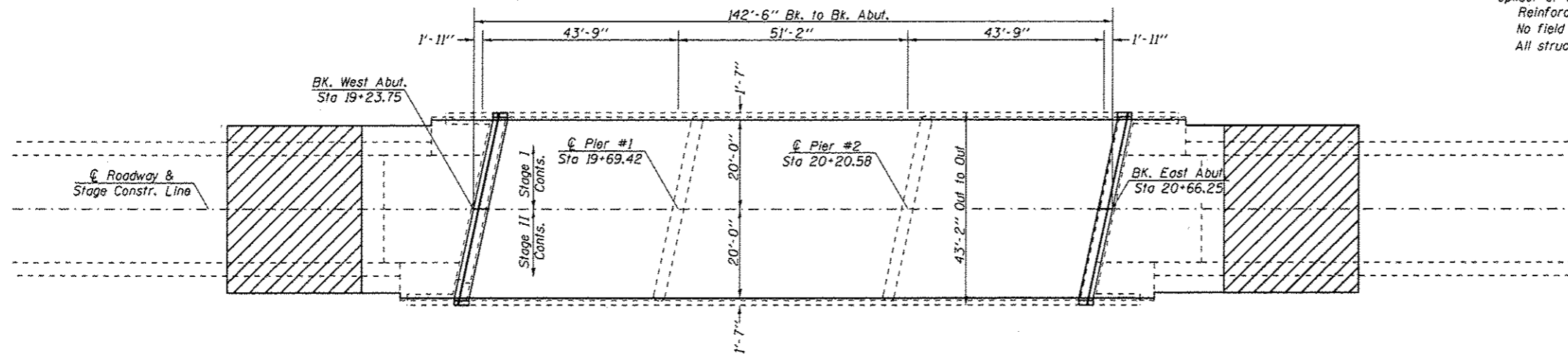
Existing structural steel shall only be cleaned and painted as required by the Special Provision "Cleaning and Painting Contact Surface Areas of Existing Steel Structures".

Existing reinforcement bars extending into the removal area shall be cleaned, straightened and incorporated into the new construction. Any reinforcement bars that are damaged during concrete removal shall be replaced with an approved bar splicer or anchorage system. Cost included with Concrete Removal.

Reinforcement bars designated (E) shall be epoxy coated.
No field welding is permitted except as specified in the contract documents.
All structural steel shall be AASHTO M 270 Grade 36 unless otherwise noted.



ELEVATION



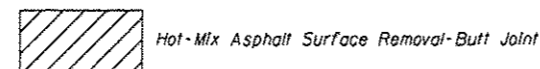
PLAN

TOTAL BILL OF MATERIAL

ITEM	UNIT	QUANTITY
Hot-Mix Asphalt Surface Course, IL-9.5FG, N70	Ton	74
Waterproofing Membrane System	Sq. Yd.	633
Bituminous Materials (Prime Coat)	Pound	210
Hot-Mix Asphalt Surface Removal-Butt Joint	Sq. Yd.	200
Reinforcement Bars, Epoxy Coated	Pound	1240
Bar Splicers	Each	24
Preformed Joint Strip Seal	Foot	93
Elastomeric Bearing Assembly, Type I	Each	8
Elastomeric Bearing Assembly, Type II	Each	8
Jack and Remove Existing Bearings	Each	16
Furnishing and Erecting Structural Steel	Pound	2510
Anchor Bolts 1" #	Each	32
Concrete Removal	Cu. Yd.	12.2
Concrete Superstructure	Cu. Yd.	13.1
Structural Repair of Concrete (Depth < 5 Inches)	Sq. Ft.	39

Scope of Work

- Remove existing PJS Joints/Concrete and replace with Preformed Joint Strip Seal.
- Removal and Replacement of the abutment Bearings.
- Structural Repair of Concrete at abutments.
- Place W.M.S.
- Place HMA Surface Course



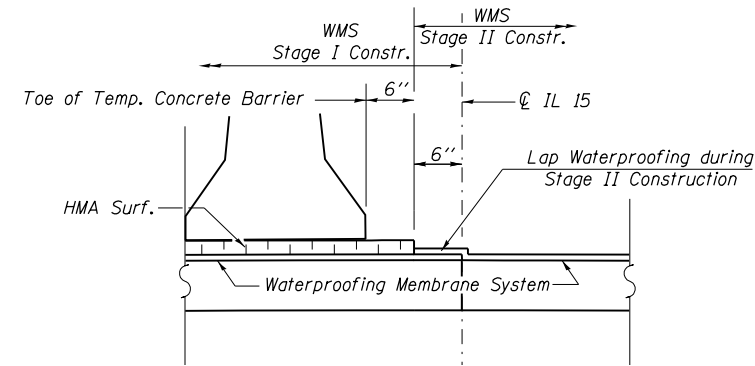
Design Stresses

FIELD UNITS (New Construction)
 $f_y = 36,000$ psi (AASHTO M270 Gr. 36)
FIELD UNITS (Existing Construction)
 $f'_c = 3,500$ psi
 $f_y = 60,000$ psi (reinf.)
 $f_y = 36,000$ psi (struct.)

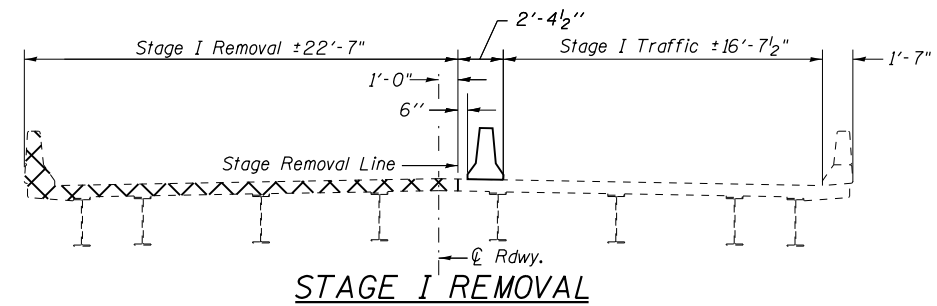
**BRIDGE REPAIR
 IL 15 (FAP 821)
 OVER CASEY FORK
 JEFFERSON COUNTY
 D9 CM BRIDGE REPAIR 2015-2
 STA. 19+95.00
 SN 041-0026**

* D9 CM BRIDGE REPAIR 2015-2

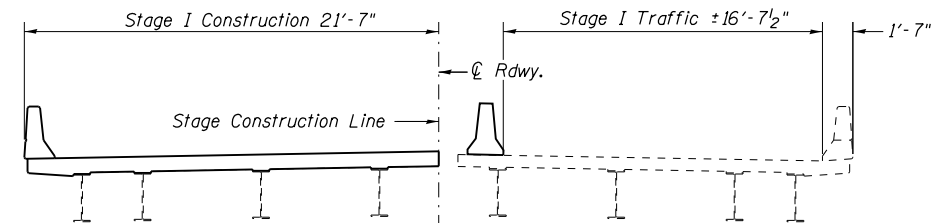
FILE NAME :	USER NAME : halstead	DESIGNED - TWH	REVISED -	STATE OF ILLINOIS DEPARTMENT OF TRANSPORTATION	GENERAL PLAN & ELEVATION			F.A.P. RTE.:	SECTION	COUNTY	TOTAL SHEETS	SHEET NO.
pw\il084EBIQINTEG\Illinois.gov\PW\DOT\Documents\DOT Offices\District 9\Projects\Con	BRANNING 2015\78432\CAD\Drawings\2015\950-1\pin.dgn	CHECKED - CCC	REVISED -		921	*	JEFFERSON	15	6			
PLOT SCALE : 3/8" = 1' - 0"	DATE -	REVISED -	REVISED -		SCALE: SHEET NO. 1 OF 8 SHEETS STA. TO STA.			ILLINOIS FED. AID PROJECT CONTRACT NO. 78432				
PLOT DATE : 5/7/2015	DATE -	REVISED -	REVISED -									



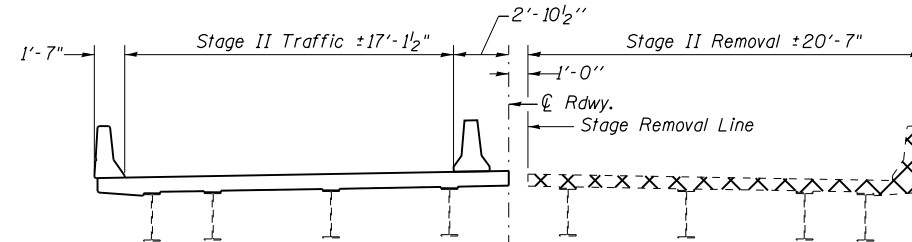
WATERPROOFING TREATMENT AT STAGE CONSTRUCTION



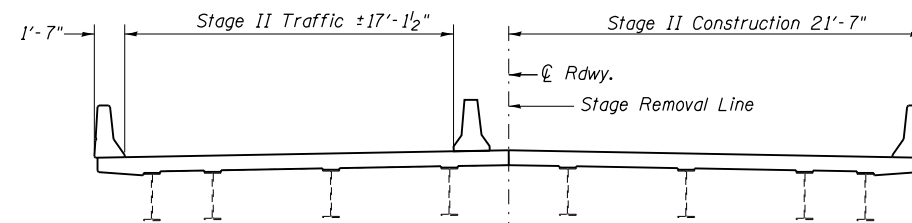
STAGE I REMOVAL



STAGE I CONSTRUCTION



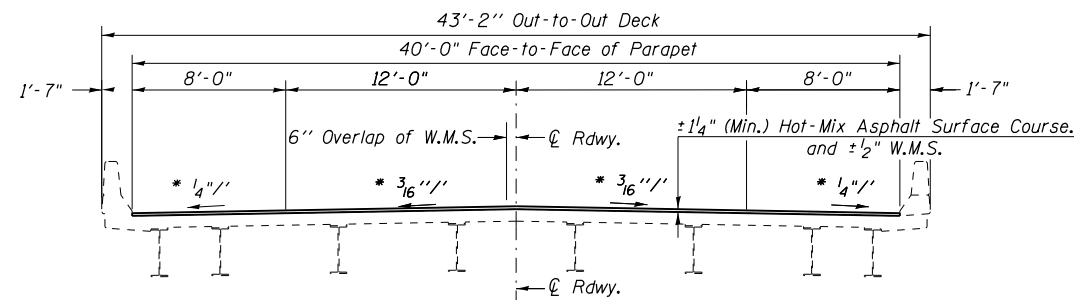
STAGE II REMOVAL



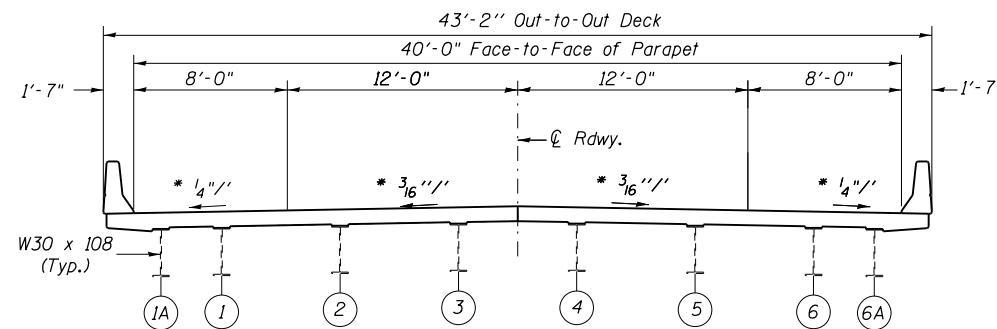
STAGE II CONSTRUCTION

Concrete Removal (at Joint Locations)

NOTES:
All Sections looking East.



TYPICAL BRIDGE SECTION



SECTION THROUGH JOINT

STAGING DETAILS AND TYPICAL SECTION SN 041-0026

*D9 CM BRIDGE REPAIR 2015-2

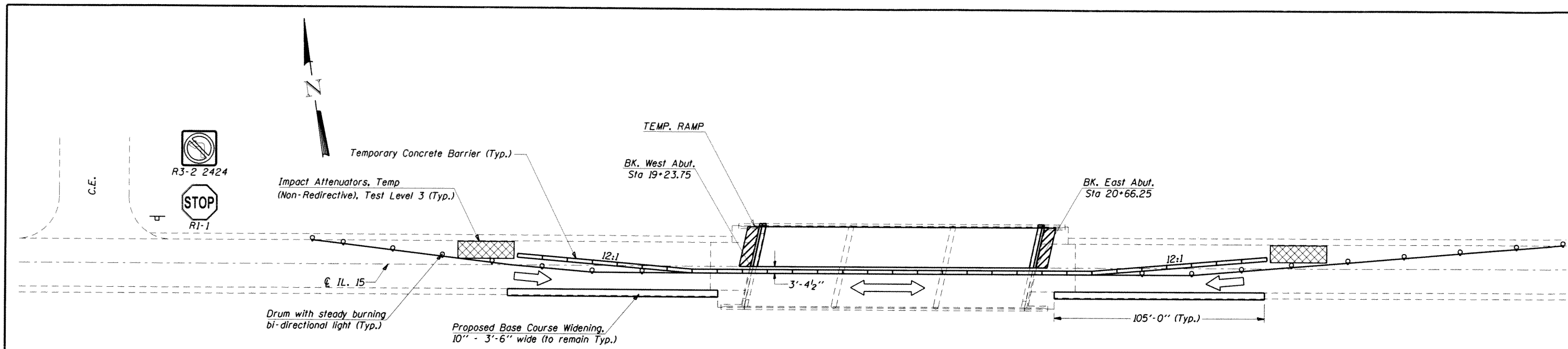
FILE NAME =	USER NAME = halsteadtw	DESIGNED -	REVISED -
pw:\IL\084EBIDINTEG.illinois.gov\PI\DOT\Documents\DOT Offices\District 9\Projects\Con	Documents\DOT Offices\District 9\Projects\Con	DRAWN 2015\78432\CADData\CADsheets\78432-pln.dgn	REVISED -
Default	PLOT SCALE = 10.0000 / in.	CHECKED -	REVISED -
	PLOT DATE = 5/7/2015	DATE -	REVISED -

STATE OF ILLINOIS DEPARTMENT OF TRANSPORTATION

TYPICAL SECTIONS AND STAGING SN 041-0026

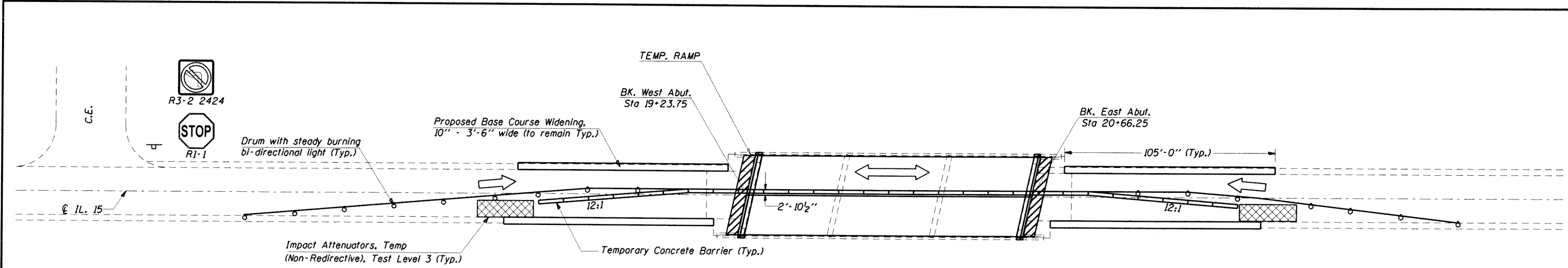
SCALE: SHEET 2 OF 8 SHEETS STA. TO STA.

F.A.P. RTE.	SECTION	COUNTY	TOTAL SHEETS	SHEET NO.
821	*	JEFFERSON	15	7
CONTRACT NO. 78432				
ILLINOIS FED. AID PROJECT				



STAGE I TRAFFIC

Notes:
See Standard 701321 for additional details.



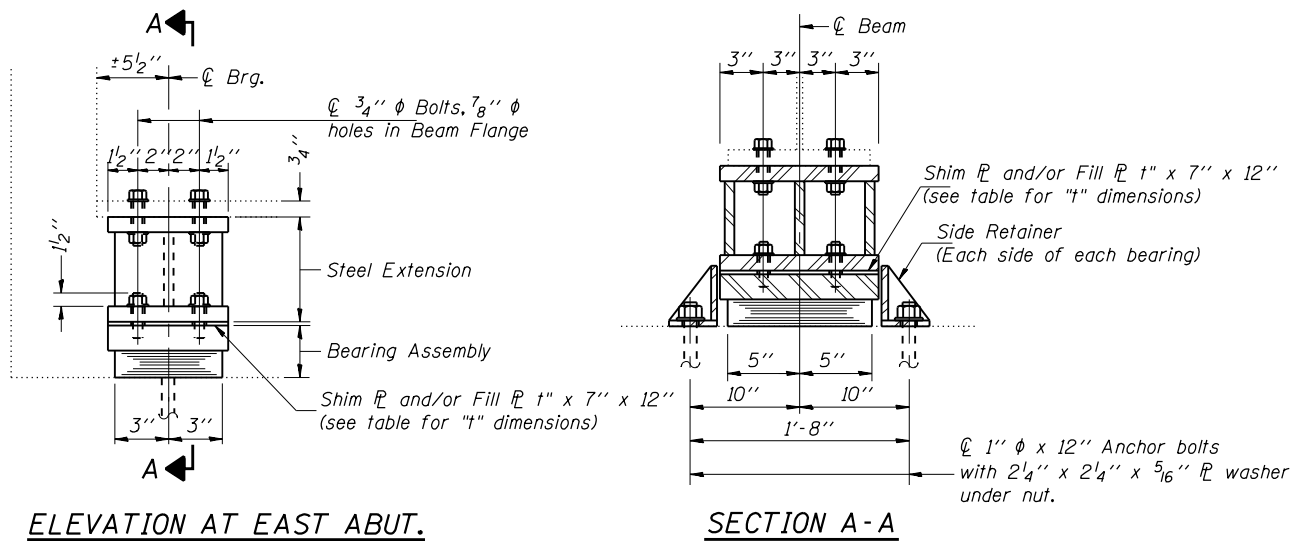
STAGE II TRAFFIC

Notes:
See Standard 701321 for additional details.

* D9 CM BRIDGE REPAIR 2015-2

FILE NAME =	USER NAME = halsteadw	DESIGNED -	REVISED -	STATE OF ILLINOIS DEPARTMENT OF TRANSPORTATION	STAGING DETAILS				F.A.P. RTE.	SECTION	COUNTY	TOTAL SHEETS	SHEET NO.
pw:\NL084EBID\INTEG.illinois.gov\PWIDOT\Documents\DOT Offices\District 9\Projects\Con	DRAWN:nt. 2015\78432\CADData\CADsheets	CHECKED -	REVISED -		821	*	JEFFERSON	15	8				
#MODELNAME#	PLOT SCALE = 50.0000' / in.	DATE -	REVISED -		SCALE: SHEET 3 OF 8 SHEETS STA. TO STA.				CONTRACT NO. 78432				
	PLOT DATE = 5/11/2015								ILLINOIS FED. AID PROJECT				

STATE OF ILLINOIS
DEPARTMENT OF TRANSPORTATION



TYPE I ELASTOMERIC EXP. BRG.

Notes:
Anchor bolts shall be ASTM F1554 all-thread (or an Engineer-approved alternate material) of the grade(s) and diameter(s) specified. ASTM A307 Grade C anchor bolts may be used in lieu of ASTM F1554 Grade 36 (Fy=36ksi). The corresponding specified grade of AASHTO M314 anchor bolts may be used in lieu of ASTM F1554.

Drilled and set anchor bolts shall be installed according to Article 521.06 of the Standard Specifications.

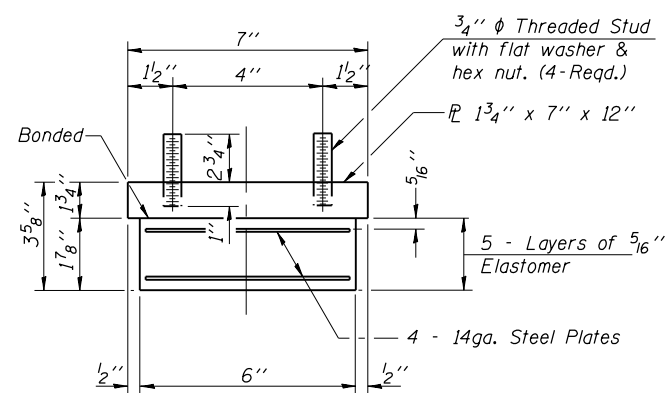
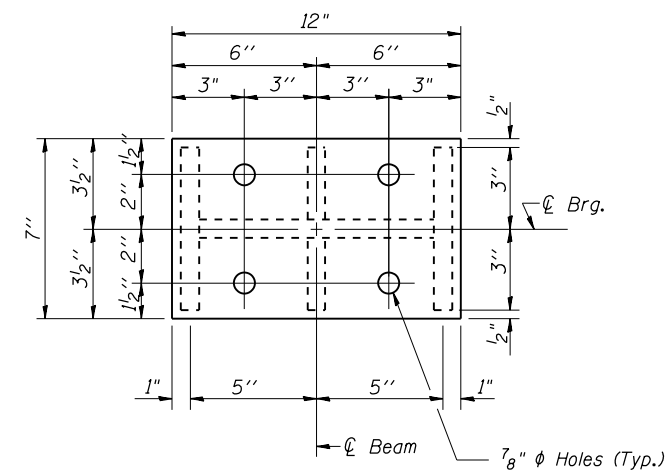
Side retainers and other steel members required for the bearing assembly shall be included in the cost of Elastomeric Bearing Assembly, Type I.

The minimum jack capacity required is 35 Tons.

Existing diaphragm removal and reinstallation may be required to facilitate drilling holes, cost to be included with "Jack and Remove Existing Bearings".

Prior to ordering any material, the Contractor shall verify in the field all bearing height and shim thickness dimensions. Two 1/8 in. adjusting shims shall be provided for each bearing in addition to all other plates or shims and placed as shown on bearing details.

New steel extensions, connection bolts, Fill P's and Shim P's are included in "Furnishing and Erecting Structural Steel".



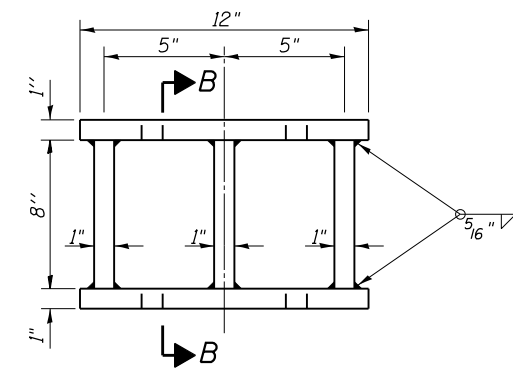
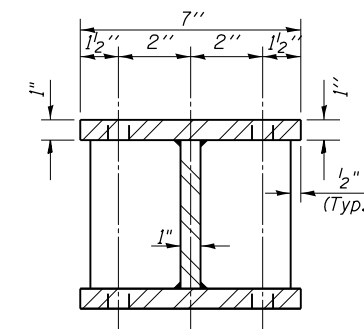
Note: Shim plates shall not be placed under Bearing Assembly.

GIRDER REACTIONS

R _P	(K)	14.6
R _L	(K)	30.7
Imp.	(K)	9.1
R (Total)	(K)	54.4

FILL P "t" DIMENSIONS

LOCATION	"t"
Beam 1, 3, 4, & 6	1 1/4"
Beam 2 & 5	1 1/2"
Beam 1A & 6A	NA



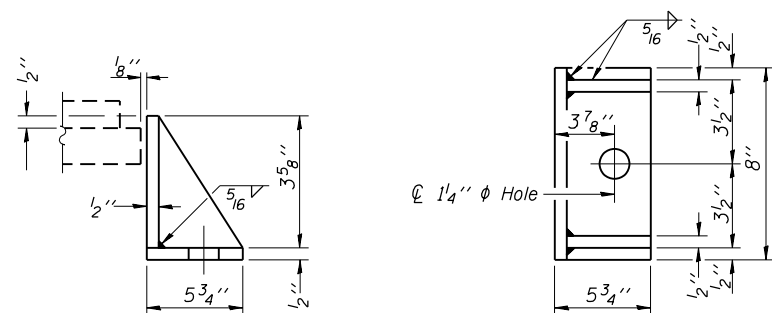
Existing Plate to be removed using the air-arc method and grind smooth all weld material remaining on the bottom flange.

Burn the existing anchor bolts flush with existing concrete surface. Grind existing anchor bolts smooth and seal with epoxy.

ABUTS

EXISTING BEARING REMOVAL DETAIL

Cost is included with Jack and Remove Existing Bearings



Equivalent rolled angle with stiffeners will be allowed in lieu of welded plates.

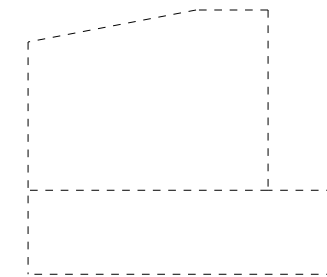
BILL OF MATERIAL

Item	Unit	Total
Elastomeric Bearing Assembly Type I	Each	8
Anchor Bolts, 1"	Each	16
Jack and Remove Existing Bearings	Each	8
Furnishing and Erecting Structural Steel	Pound	1210

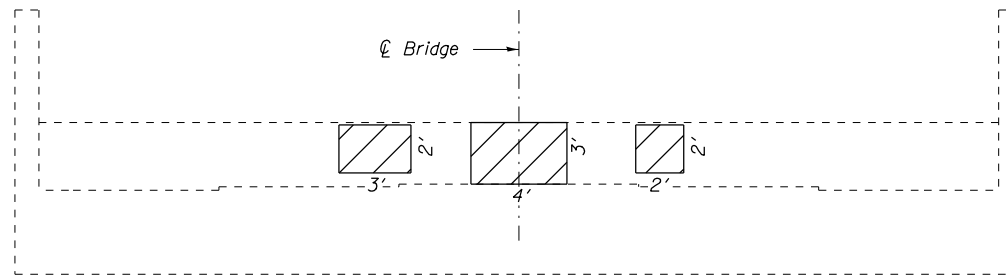
**EAST ABUTMENT
BEARING DETAILS
STRUCTURE NO. 041-0026**

*D9 CM BRIDGE REPAIR 2015-2

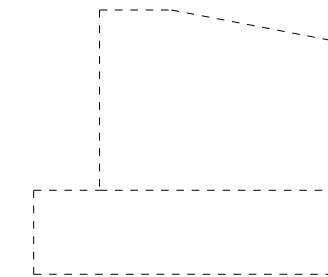
FILE NAME =	USER NAME =	DESIGNED - TWH	REVISED -	STATE OF ILLINOIS DEPARTMENT OF TRANSPORTATION	EAST ABUTMENT BEARING DETAILS	F.A.P. R.T.E.	SECTION	COUNTY	TOTAL SHEETS	SHEET NO.	
	CHECKED - MAS	REVISED -	821			*	JEFFERSON	15	10		
	PLOT SCALE =	DRAWN - TWH	REVISED -			CONTRACT NO. 78432					
	PLOT DATE =	CHECKED - MAS	REVISED -			ILLINOIS FED. AID PROJECT					



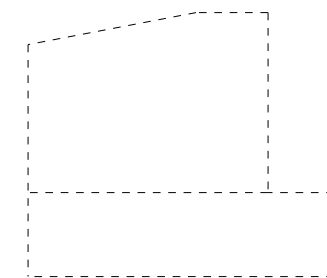
WEST ABUTMENT
Looking North



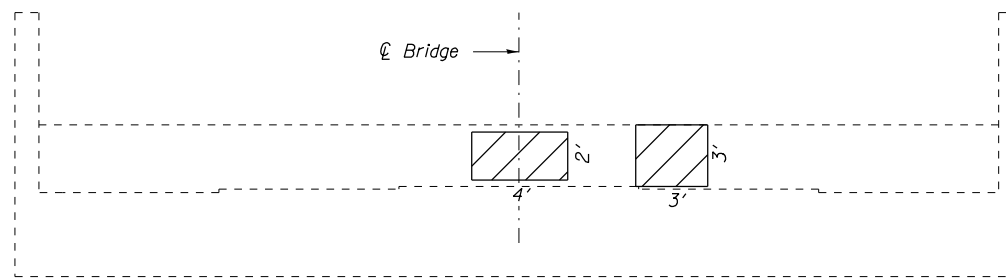
WEST ABUTMENT
Looking West



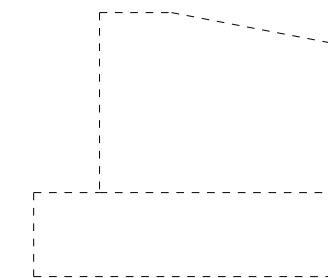
WEST ABUTMENT
Looking South



EAST ABUTMENT
Looking South



EAST ABUTMENT
Looking East



EAST ABUTMENT
Looking North



Structural Repair of Concrete ≤ 5"

BILL OF MATERIAL

Item	Unit	Total
Structural Repair of Concrete (Depth ≤ 5 Inches)	Sq. Ft.	39

**SUBSTRUCTURE REPAIRS
ABUTMENTS
JEFFERSON COUNTY
SN 041-0026**

*D9 CM BRIDGE REPAIR 2015-2

FILE NAME =	USER NAME = halsteadtw	DESIGNED -	REVISED -
p:\11\084EBIDINTEG.illinois.gov\PWIDOT\Documents\IDOT Offices\District 9\Projects\Con	DRAWN =	CHECKED -	REVISED -
Default	PLOT SCALE = 8.0000' / in.	DATE -	REVISED -
	PLOT DATE = 5/7/2015		

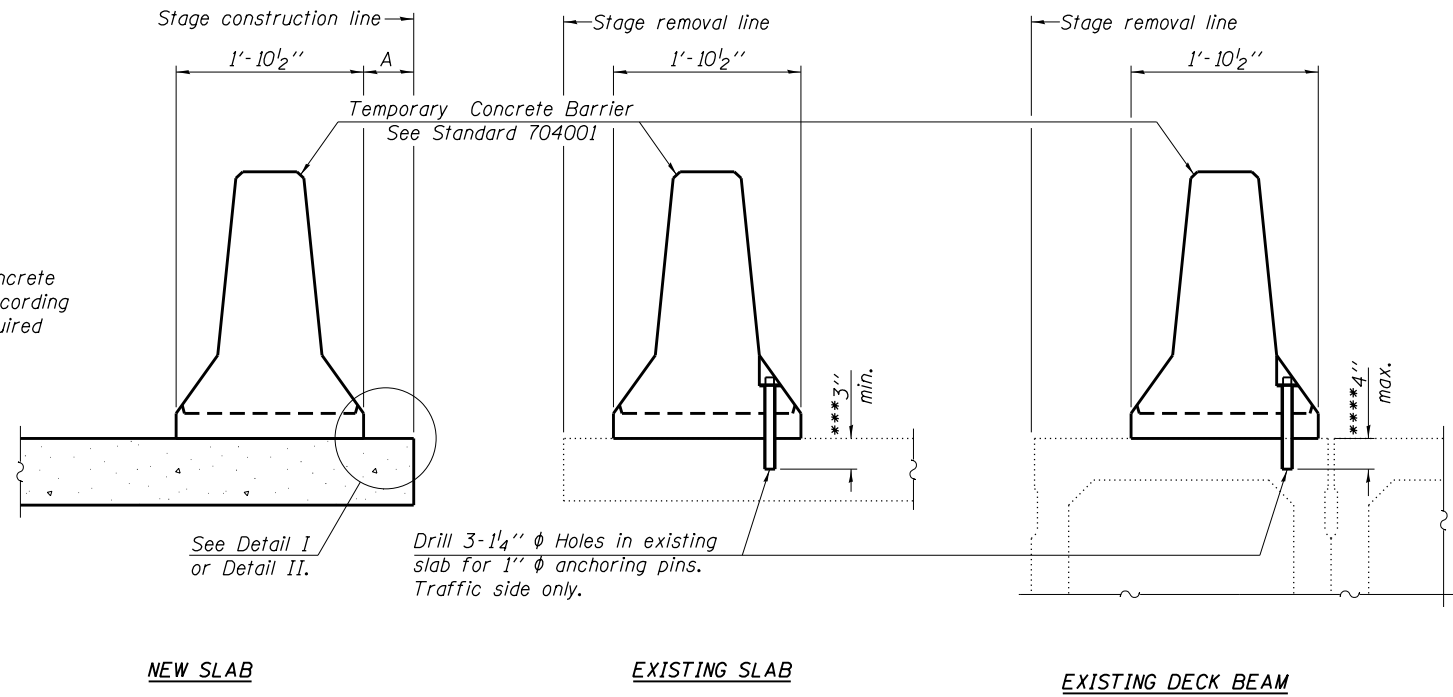
**STATE OF ILLINOIS
DEPARTMENT OF TRANSPORTATION**

**SUBSTRUCTURE REPAIRS
ABUTMENTS**

SCALE: SHEET 8 OF 8 SHEETS STA. TO STA.

F.A.P. RTE.	SECTION	COUNTY	TOTAL SHEETS	SHEET NO.
821	*	JEFFERSON	15	13
			CONTRACT NO. 78432	
ILLINOIS FED. AID PROJECT				

When "A" is 3'-1" or less, the temporary concrete barrier shall be anchored to the new slab according to Detail I or Detail II. No anchorage is required when "A" is greater than 3'-1".



SECTIONS THRU SLAB OR DECK BEAM

NOTES

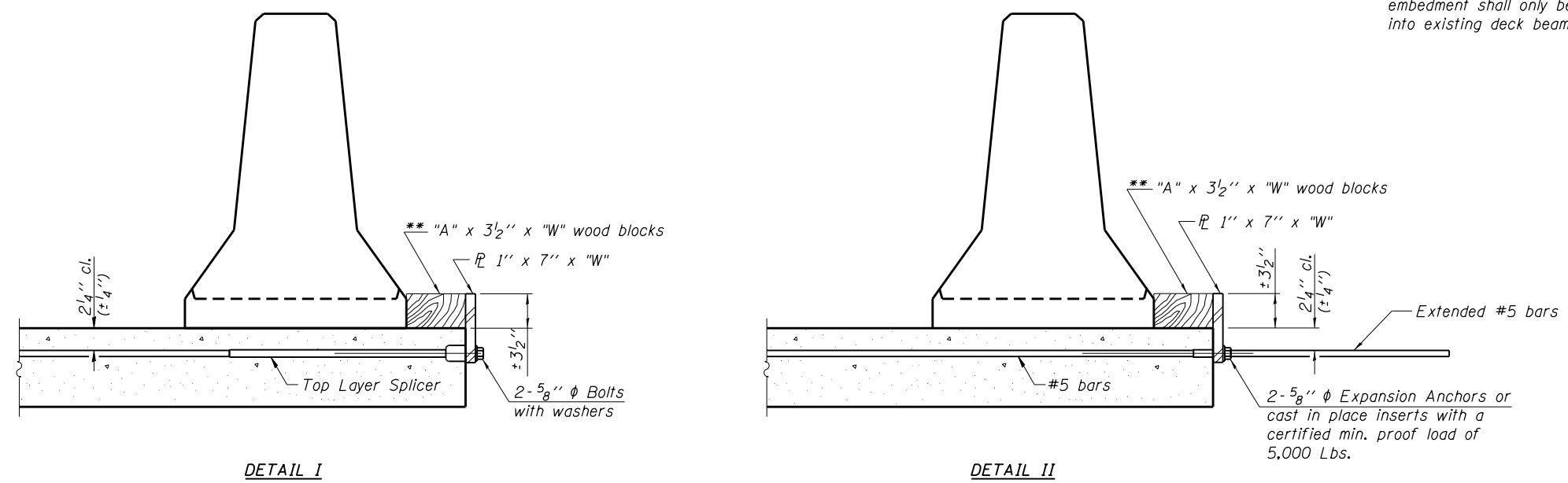
Detail I - With Bar Splicer or Couplers:
Connect one (1) 1" x 7" x "W" steel PL to the top layer of couplers with 2-5/8" φ bolts screwed to coupler at approximate C of each barrier panel.

Detail II - With Extended Reinforcement Bars:
Connect one (1) 1" x 7" x "W" steel PL to the concrete slab or concrete wearing surface with 2-5/8" φ Expansion Anchors or cast in place inserts spaced between the top layer of reinforcement at approximate C of each barrier panel.

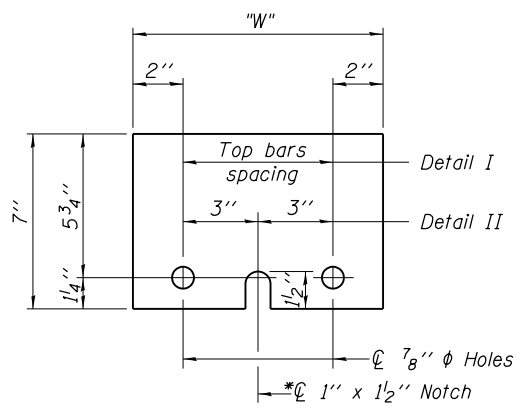
Cost of retainer assembly is included with Temporary Concrete Barrier. The 1" x 7" x "W" plate shall not be removed until stage II construction forms and all reinforcement bars are in place and the concrete is ready to be placed.

*** Dimension shown is minimum required embedment into concrete. If hot-mix asphalt wearing surface is present, minimum embedment shall be in addition to wearing surface depth.

**** If existing deck beam is to remain in place after stage construction, embedment shall only be into wearing surface and not into existing deck beam concrete.



RETAINER ASSEMBLY



STEEL RETAINER PL 1" x 7" x "W"

* Required only with Detail II

** Wood blocks may be omitted when required to provide minimum stage traffic lane width. When the wood blocks are omitted, the concrete barrier shall be in direct contact with the steel retainer plate.

R-27

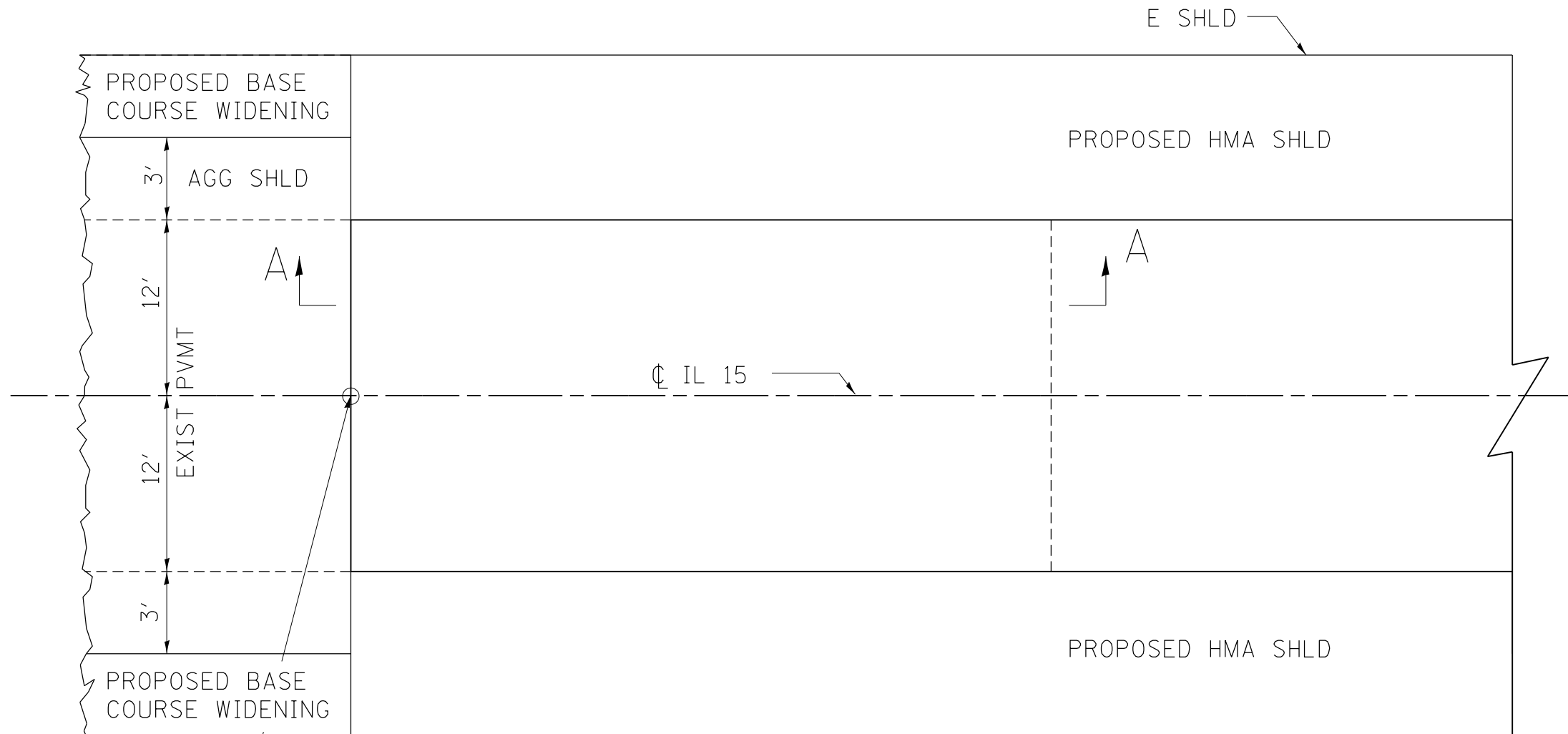
1-12-15

*D9 CM BRIDGE REPAIR 2015-2

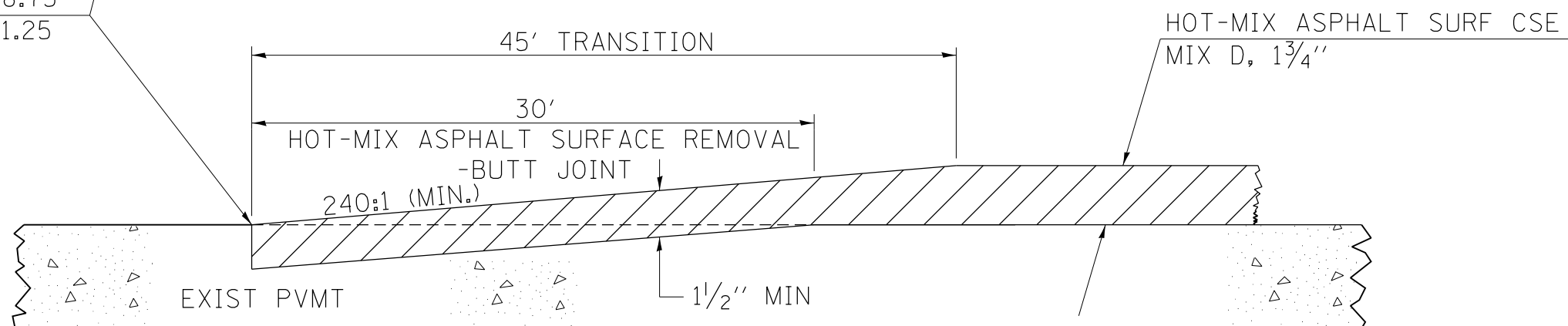
FILE NAME =	USER NAME = halsteadtw	DESIGNED -	REVISED -	STATE OF ILLINOIS DEPARTMENT OF TRANSPORTATION	TEMPORARY CONCRETE BARRIER FOR STAGE CONSTRUCTION STRUCTURE NO. 041-0026			F.A.P. RTE.	SECTION	COUNTY	TOTAL SHEETS	SHEET NO.
p:\11\084EBIDINTEG.illinois.gov\PIWIDOT\Documents\DOT Offices\District 9\Projects\Con	DRAWN = 2015\78432\CADD\cadsheets\78432-pln.dgn	CHECKED -	REVISED -					821	.	JEFFERSON	15	14
Default	PLOT SCALE = 8.0000' / in.	DATE -	REVISED -					CONTRACT NO. 78432				
	PLOT DATE = 5/7/2015							ILLINOIS FED. AID PROJECT				

SCALE: SHEET 8 OF 8 SHEETS STA. TO STA.

BUTT JOINT



STA 18+68.75
STA 21+21.25



SECTION A-A

REVISIONS

DRAWN	10-17-90
REVISED	01-11-07
REVISED	3-25-08
REVISED	5-17-13

STD. 9-86

FILE NAME =	USER NAME = halsteadw	DESIGNED -	REVISED -	STATE OF ILLINOIS DEPARTMENT OF TRANSPORTATION	BUTT JOINT DETAIL	SCALE:	SHEET OF SHEETS	STA. TO STA.
pw:\IL\084EBIDINTEG.illinois.gov\PIWIDOT\Documents\DOT Offices\District 9\Projects\Con	Documents\DOT Offices\District 9\Projects\Con	DRAWN 2015\78432\CADD\CADsheets\78432-pln.dgn	REVISED -					
Default	PLOT SCALE = 50.0000' / in.	CHECKED -	REVISED -					
	PLOT DATE = 5/7/2015	DATE -	REVISED -					

F.A.P. RTE.	SECTION	COUNTY	TOTAL SHEETS	SHEET NO.
821	D9 CM BRIDGE REP. 2015-2	JEFFERSON	18	15
CONTRACT NO. 78432				
ILLINOIS FED. AID PROJECT				