

STATE OF ILLINOIS
DEPARTMENT OF TRANSPORTATION
DIVISION OF HIGHWAYS

**PROPOSED
HIGHWAY PLANS**

I-24 & US 45 ROUTE (FAI 24 & FAP 889)
SECTION D9 CM PATCH 2016-3

PATCHING
JOHNSON & MASSAC COUNTY

C-99-029-15

F.A.I. RTE.	SECTION	COUNTY	TOTAL SHEETS	SHEET NO.
24	D9 PATCH 2016-3	ILLINOIS	11	1
			CONTRACT NO. 78464	
JOHNSON / MASSAC				

I-24 STATION EQUATIONS

52' LT. STA. 333+27.60 BK. (C MEDIAN) = STA. 1333+27.60 AH. (C WBL)
 52' RT. STA. 333+27.60 BK. (C MEDIAN) = STA. 333+27.60 AH. (C EBL)
 52' RT. POT STA. 1429+60.80 BK. (C WBL) = POT STA. 429+36.09 AH. (C MEDIAN)
 52' LT. STA. 429+34.43 BK. (C EBL) = STA. 429+36.09 AH. (C MEDIAN)
 C STA. 524+83.61 BK. (C MEDIAN) = STA. 102+46.58 AH. (C MEDIAN)
 52' LT. STA. 133+63.21 BK. (C MEDIAN) = STA. 131+77.98 AH. (C WBL)
 52' RT. STA. 133+63.21 BK. (C MEDIAN) = STA. 133+66.46 AH. (C EBL)
 52' RT. STA. 287+99.79 BK. (C WBL) = STA. 287+96.99 AH. (C MEDIAN)
 52' LT. STA. 288+00.86 BK. (C EBL) = STA. 287+96.99 AH. (C MEDIAN)
 C STA. 499+01.37 BK. (C MEDIAN) = P.C. STA. 78+90.80 AH. (C MEDIAN)
 52' RT. STA. 236+52.37 BK. (C MEDIAN) = STA. 236+57.01 AH. (C EBL)
 52' LT. STA. 236+52.37 BK. (C MEDIAN) = STA. 597+79.11 AH. (C WBL)
 52' LT. STA. 403+54.97 BK. (C EBL) = STA. 403+52.86 AH. (C MEDIAN)
 52' RT. STA. 766+19.20 BK. (C WBL) = STA. 403+52.86 AH. (C MEDIAN)

US 45 STATION EQUATIONS

STA. 199+39.20 BK. = STA. 0+00.00 AH.

I-24 OMISSION STATIONS

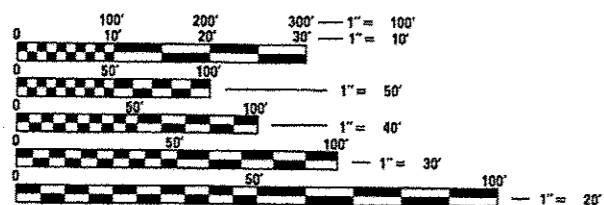
STA. 148+00.00 TO STA. 155+00.00 (OMISSION) EBL
 STA. 186+19.33 TO STA. 187+30.75 (OMISSION) EBL
 STA. 348+68.61 TO STA. 350+50.11 (OMISSION) EBL
 STA. 408+05.70 TO STA. 409+18.70 (OMISSION) EBL
 STA. 418+18.90 TO STA. 419+78.88 (OMISSION) EBL
 STA. 442+43.90 TO STA. 444+13.00 (OMISSION) EBL
 STA. 473+09.78 TO STA. 474+98.61 (OMISSION) EBL
 STA. 258+37.13 TO STA. 259+44.29 (OMISSION) EBL

TRAFFIC DATA

I 24	2015 ADT
WILLIAMSON/JOHNSON CO. LINE TO TUNNEL HILL RD	16,730 WITH 30.9% TRUCKS
TUNNEL HILL RD TO US 45	16,320 WITH 35.6% TRUCKS
US 45 TO IL 146	16,220 WITH 33.5% TRUCKS
IL 146 TO JOHNSON/MASSAC CO. LINE	16,830 WITH 37.7% TRUCKS
US 45	2015 ADT
STA. 163+52.96 TO STA. 180+85	15,090 WITH 7.2% TRUCKS
STA. 180+85 TO STA. 195+63.5	11,860 WITH 8.1% TRUCKS
STA. 195+63.5 TO STA. 18+40	9,260 WITH 10.9% TRUCKS

TOWNSHIPS

GOREVILLE METROPOLIS
 TUNNEL HILL WEST BROOKLYN
 BLOOMFIELD
 VIENNA
 GRANTSBURG

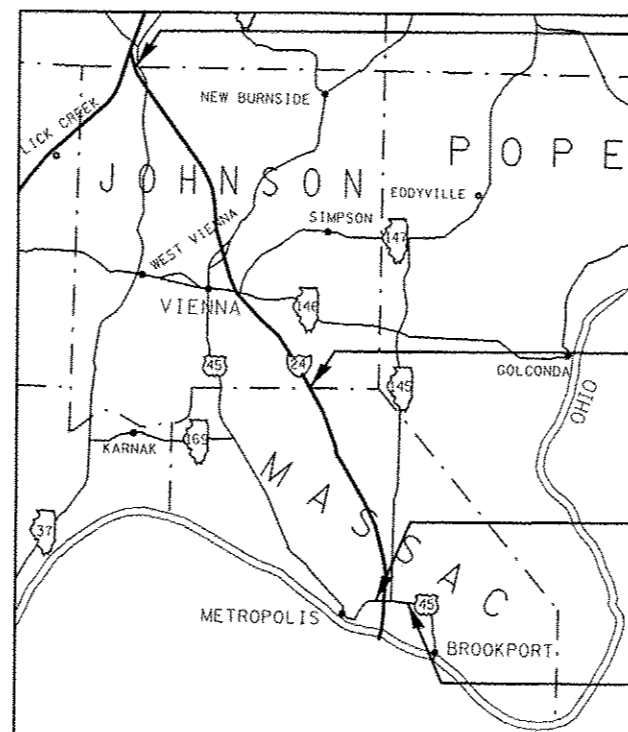


FULL SIZE PLANS HAVE BEEN PREPARED USING STANDARD ENGINEERING SCALES. REDUCED SIZED PLANS WILL NOT CONFORM TO STANDARD SCALES. IN MAKING MEASUREMENTS ON REDUCED PLANS, THE ABOVE SCALES MAY BE USED.

J.U.L.I.E.
 JOINT UTILITY LOCATION INFORMATION FOR EXCAVATION
 1-800-892-0123
 OR 811

PROJECT ENGINEER CHARLES STEIN - (618) 351-5210
 PROJECT MANAGER JOHN A. BRANDON - (618) 351-5291

CONTRACT NO. 78464



LOCATION #1 PROJECT BEGINS
 JOHNSON COUNTY LINE STA. 134+80
 I-24 (F.A.I. 24) M.P. 1.87

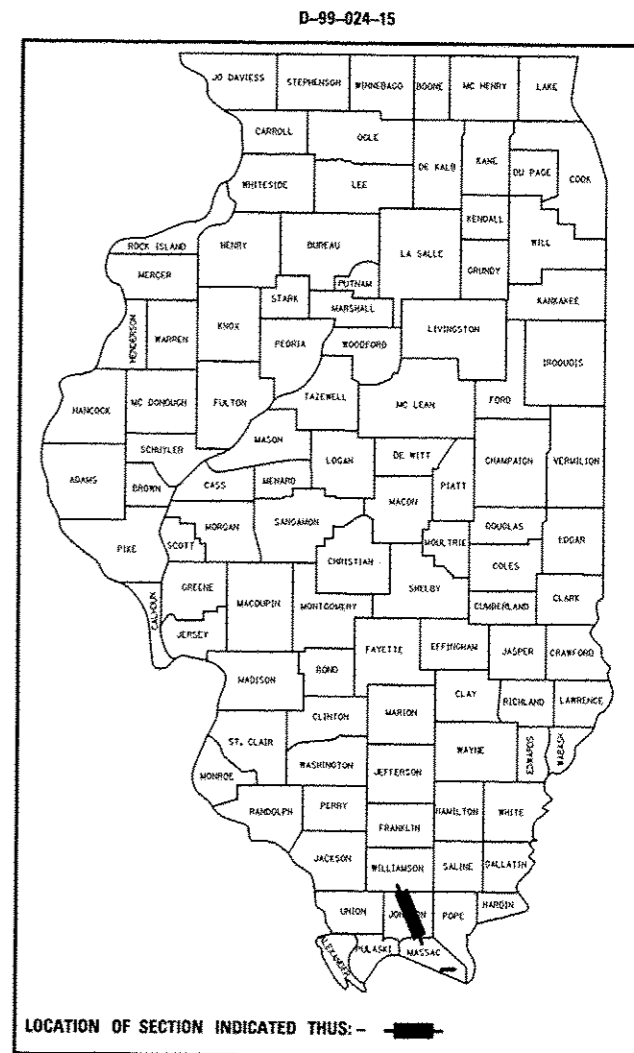
LOCATION #1 PROJECT ENDS
 JOHNSON COUNTY LINE STA. 456+69.50
 I-24 (F.A.I. 24) M.P. 23.92

LOCATION #2 PROJECT BEGINS
 NEAR DEVERS RD AT STA. 163+52.96
 US 45 (F.A.P. 889)

LOCATION #2 PROJECT ENDS
 NEAR BELGRADE RD AT STA. 18+40
 US 45 (F.A.P. 889)

I-24 GROSS LENGTH = 116,433.53 FT. = 22.052 MILE
 I-24 OMISSION LENGTH = 1730.99 FT. = 0.328 MILE
 I-24 NET LENGTH = 114,702.54 FT. = 21.724 MILE

US 45 GROSS LENGTH = 5426.24 FT. = 1.028 MILE
 US 45 OMISSION LENGTH = 0.00 FT. = 0.000 MILE
 US 45 NET LENGTH = 5426.24 FT. = 1.028 MILE



STATE OF ILLINOIS
 DEPARTMENT OF TRANSPORTATION
 DIVISION OF HIGHWAYS

SUBMITTED *May 7 20 15*
Jeffrey J. [Signature]
 DEPUTY DIRECTOR OF HIGHWAYS, REGION ENGINEER

June 26 20 15
John D. Baranzelli, PE, LE
 ASSISTANT ENGINEER OF DESIGN AND ENVIRONMENT

June 26 20 15
Omer Osman, PE, LE
 DIRECTOR OF HIGHWAYS, CHIEF ENGINEER

PRINTED BY THE AUTHORITY
 OF THE STATE OF ILLINOIS

Prepared By: Joe Zdaniewicz
DISTRICT STUDIES & PLANS ENGINEER

Examined By: Paul E
DISTRICT LAND ACQUISITION ENGINEER

Examined By: Car - Mills
DISTRICT PROGRAM DEVELOPMENT ENGINEER

Examined By: Kevin
DISTRICT OPERATIONS ENGINEER

Examined By: Kevin
DISTRICT PROJECT IMPLEMENTATION ENGINEER

Examined By: Douglas J. Melnick
DISTRICT CONSTRUCTION ENGINEER

Examined By: _____
DISTRICT MATERIALS ENGINEER

FILE NAME: p:\11894EB9\INTEGRAL\mtr\gov\11894EB9	USER NAME: brandon.g	DESIGNED: -	REVISED: -	STATE OF ILLINOIS DEPARTMENT OF TRANSPORTATION	SIGNATURE SHEET		F.A.I. R.T.E. 24	SECTION B9 PATCH 2016-3	COUNTY *	TOTAL SHEETS 11	SHEET NO. 2	
PROJECT: 11894EB9	PROJECT: 11894EB9	CHECKED: -	REVISED: -		SCALE: _____	SHEET OF _____	SHEETS: STA. _____	TO STA. _____	CONTRACT NO. 78464			
PLOT SCALE: 1/8" = 1'-0"	PLOT DATE: 5/5/2016	DATE: -	REVISED: -		ILLINOIS FED. AID PROJECT							
Default												

INDEX OF SHEETS

SHEET NO.	DESCRIPTION
1	COVER SHEET
2	SIGNATURE SHEET
3	INDEX OF SHEETS, STATION EQUATIONS & OMISSIONS, MIX DESIGN, GENERAL NOTES, HIGHWAY STANDARDS, AND COMMITMENTS
4-5	SUMMARY OF QUANTITIES
6-8	SCHEDULE OF QUANTITIES - I-24 JOHNSON COUNTY
9	SCHEDULE OF QUANTITIES - US 45 MASSAC COUNTY
10	LOCATION MAP - US 45 / LOCATION # 2
11	DETAIL - CLASS B PATCHES (SPECIAL)

COMMITMENTS

NONE

GENERAL NOTES

QUANTITIES SHOWN IN THE PLANS FOR PATCHING ARE ESTIMATES. THE ACTUAL AMOUNT OF PATCHING REQUIRED WILL BE DETERMINED BY THE ENGINEER.

FACTORS USED FOR ESTIMATING PLAN QUANTITIES CALCULATIONS ARE AS FOLLOWS AND SHALL NOT BE USED FOR THE BASIS OF PLAN QUANTITIES:

ALL BITUMINOUS CONCRETE.....2.016 TONS/CU YD
BITUMINOUS MATERIALS.....0.05 LBS/SO FT

IF ANY STAMPED STATION FALLS WITHIN THE PATCH AREA, THE NEW PATCH SHALL BE RESTAMPED. THE STATION SYMBOL STAMPS USED SHALL BE FURNISHED BY THE CONTRACTOR. THEY SHALL BE 5 1/2" TALL OF A DESIGN APPROVED BY THE ENGINEER, AND SHALL REMAIN THE PROPERTY OF THE CONTRACTOR.

IF A PROPOSED PATCH FALLS WITHIN AN EXISTING LUG, THE WORK REQUIRED TO RECONSTRUCT THE LUG SHALL BE PAID FOR IN ACCORDANCE WITH ARTICLE 109.04 OF THE STANDARD SPECIFICATIONS.

IF BASE REPAIR IS NEEDED FOR A PROPOSED PATCH, THE WORK SHALL BE PAID FOR IN ACCORDANCE WITH ARTICLE 109.04 OF THE STANDARD SPECIFICATIONS.

EXISTING CONTINUOUSLY REINFORCED CONCRETE PAVEMENT ALONG I-24 IN JOHNSON COUNTY HAS 22 #5 BARS AT 6.5' CENTERS AND #4 TRANSVERSE BARS AT 4'-0" CENTERS.

THERE ARE NO AVAILABLE WASTE SITES ON THE EXISTING RIGHT OF WAY WITHIN THE PROJECT LIMITS. DISPOSAL WILL BE THE RESPONSIBILITY OF THE CONTRACTOR AND WASTE MUST BE DISPOSED OF IN ACCORDANCE WITH ARTICLE 202.3 OF THE STANDARD SPECIFICATIONS.

STATION EQUATIONS

STATION EQUATIONS FOR I-24 JOHNSON COUNTY

52' LT. STA. 333+27.60 BK. (CI MEDIAN) = STA. 1333+27.60 AH. (CI WBL)
 52' RT. STA. 333+27.60 BK. (CI MEDIAN) = STA. 333+27.60 AH. (CI EBL)
 52' RT. POT STA. 1429+60.80 BK. (CI WBL) = POT STA. 429+36.09 AH. (CI MEDIAN)
 52' LT. STA. 429+34.43 BK. (CI EBL) = STA. 429+36.09 AH. (CI MEDIAN)
 STA. 524+83.61 BK. (CI MEDIAN) = STA. 102+46.58 AH. (CI MEDIAN)
 52' LT. STA. 133+63.21 BK. (CI MEDIAN) = STA. 131+77.98 AH. (CI WBL)
 52' RT. STA. 133+63.21 BK. (CI MEDIAN) = STA. 133+66.46 AH. (CI EBL)
 52' RT. STA. 287+99.79 BK. (CI WBL) = STA. 287+96.99 AH. (CI MEDIAN)
 52' LT. STA. 288+00.86 BK. (CI EBL) = STA. 287+96.99 AH. (CI MEDIAN)
 CI STA. 499+01.37 BK. (CI MEDIAN) = P.C. STA. 78+90.80 AH. (CI MEDIAN)
 52' RT. STA. 236+52.37 BK. (CI MEDIAN) = STA. 236+57.01 AH. (CI EBL)
 52' LT. STA. 236+52.37 BK. (CI MEDIAN) = STA. 597+79.11 AH. (CI WBL)
 52' LT. STA. 403+54.97 BK. (CI EBL) = STA. 403+52.86 AH. (CI MEDIAN)
 52' RT. STA. 766+19.20 BK. (CI WBL) = STA. 403+52.86 AH. (CI MEDIAN)

STATION EQUATIONS FOR US-45 MASSAC COUNTY

STA. 199+39.20 BK. = STA. 0+00 AH.

HIGHWAY STANDARDS

000001-06_standardsymbolsabbreviations&patterns
 001001-02_areasofreinforcebars
 001006_decimalofinch&foot
 420001-08_pavementjoints
 420701-02_pavementfabric
 421001-02_barreinforcrcpvmt
 421201-06_24ftarcpvmt-wlugsys
 442001-04_classapatches
 442101-07_classbpatches
 701101-04 OffRdOp-MultiLn-LessThan15ftToEOP
 701106-02 OffRdOp-MultiLn-MoreThan15ftAway
 701336-06_LnClosure2L2W-WorkAreasInSeries45MPHOrMore
 701400-08 ApprchToLnClosure-FrwyExpwy
 701401-09_LnClosureFrwyExpwy
 701411-09 LnClosureMultiLn-EntrOrExitRamp45MPHOrMore
 701601-09_UrbanLnClosureMultiLn1W2WWithNontrvsableMed
 701701-09_UrbanLnClosureMultiLnIntersection
 701901-04 TrafCntrlDevices

STATION OMISSIONS

STATION OMISSIONS FOR I-24 JOHNSON COUNTY

STA. 148+00.00 TO 155+00.00 (OMISSION) EBL
 STA. 186+19.33 TO 187+30.75 (OMISSION) EBL
 STA. 348+68.61 TO 350+50.11 (OMISSION) EBL
 STA. 408+05.70 TO 409+18.70 (OMISSION) EBL
 STA. 418+18.90 TO 419+78.88 (OMISSION) EBL
 STA. 442+43.90 TO 444+13.00 (OMISSION) EBL
 STA. 473+09.78 TO 474+98.61 (OMISSION) EBL
 STA. 258+37.13 TO 259+44.29 (OMISSION) EBL

 STA. 148+00.00 TO 155+00.00 (OMISSION) WBL
 STA. 187+05.29 TO 188+16.72 (OMISSION) WBL
 STA. 348+17.89 TO 349+99.39 (OMISSION) WBL
 STA. 408+05.70 TO 409+18.70 (OMISSION) WBL
 STA. 417+83.90 TO 419+42.26 (OMISSION) WBL
 STA. 442+40.13 TO 444+18.33 (OMISSION) WBL
 STA. 473+62.80 TO 475+65.83 (OMISSION) WBL
 STA. 619+68.69 TO 620+84.19 (OMISSION) WBL

MIX DESIGN

Locations	Hot-Mix Asphalt Surface Course
Mixture Use(s):	Hot-Mix Asphalt Surface Course, Mix D, N90
AC/PG:	PG64-22
ABR % (Max):	See Special Provision
Design Air Voids:	4.0%, 90 Gyration Design
Mixture Composition (Gradation Mixture)	IL-9.5 mm
Friction Aggregate:	D Surface
Quality Management Program:	QCQA

FILE NAME	USER NAME	DESIGNED	REVISED	STATE OF ILLINOIS DEPARTMENT OF TRANSPORTATION		INDEX OF SHEETS, STATION EQUATIONS & OMISSIONS, GENERAL NOTES, & HIGHWAY STANDARDS		F.A.I. R.T.E.	SECTION	COUNTY	TOTAL SHEETS	SHEET NO.			
g:\11\894EB\INTEG\11mass.gov\PI\DOT\G...	brandan.j	BRANN	REHSE					24	09 PATCH 2016-3	-	11	3			
								SCALE:	SHEET	OF	SHEETS	STA.	TO	STA.	ILLINOIS FED. AID PROJECT
								CONTRACT NO. 78464							

SUMMARY OF QUANTITIES

COUNTY:	RURAL	URBAN
ROUTE:	I-24 (FAI 24)	US 45 (FAP 889)
FUNDING:	100% STATE	100% STATE
LOCATION:	JOHNSON	MASSAC
	ROADWAY	ROADWAY
	0005	0005

CODE NUMBER	ITEM DESCRIPTION	UNIT	TOTAL QUANTITY	RURAL	URBAN
40600275	BITUMINOUS MATERIALS (PRIME COAT)	POUND	78.0	41.8	36.2
42001200	PAVEMENT FABRIC	SQ YD	342.2		342.2
44200525	CLASS A PATCHES, TYPE I, 8 INCH	SQ YD	6.6		6.6
44200529	CLASS A PATCHES, TYPE II, 8 INCH	SQ YD	63.3		63.3
44200533	CLASS A PATCHES, TYPE III, 8 INCH	SQ YD	32.0		32.0
44200535	CLASS A PATCHES, TYPE IV, 8 INCH	SQ YD	116.6		116.6
44200573	CLASS A PATCHES, TYPE I, 12 INCH	SQ YD	72.0	72.0	
44200577	CLASS A PATCHES, TYPE II, 12 INCH	SQ YD	555.6	555.6	
44200581	CLASS A PATCHES, TYPE III, 12 INCH	SQ YD	62.6	62.6	
44200583	CLASS A PATCHES, TYPE IV, 12 INCH	SQ YD	246.6	246.6	
44200970	CLASS B PATCHES, TYPE II, 10 INCH	SQ YD	72.0		72.0
44201299	DOWEL BARS 1 1/2"	EACH	216		216
44213000	PATCHING REINFORCEMENT	SQ YD	1,155.3	936.8	218.5
44213200	SAW CUTS	FOOT	9,220	6,244	2,976

14

FILE NAME =	USER NAME = brendenje	DESIGNED -	REVISED -	STATE OF ILLINOIS DEPARTMENT OF TRANSPORTATION	SUMMARY OF QUANTITIES	F.A.T. R.T.E. =	SECTION	COUNTY	TOTAL SHEETS	SHEET NO.
pw\12.284EBIDINTEG.illinois.gov\PI00T\Do	uants\DOT\Offices\District 9\Projects\Con	BROWN 2016\78464\CADD\sa\CAD\sheet	REVISED -		342.2	24	D9 PATCH 2016-3		11	4
Default	PLOT SCALE = 100.0000' / 1" =	CHECKED -	REVISED -		SCALE:					
	PLOT DATE = 5/11/2015	DATE -	REVISED -		SHEET OF SHEETS	STA.	TO STA.			ILLINOIS FED. AID PROJECT

• JOHNSON / MASSAC

SUMMARY OF QUANTITIES - CONT

CODE NUMBER	ITEM DESCRIPTION	UNIT	TOTAL QUANTITY	COUNTY:	RURAL	URBAN
				ROUTE:	I-24 (FAI 24)	US 45 (FAP 889)
				FUNDING:	100% STATE	100% STATE
				LOCATION:	JOHNSON ROADWAY	MASSAC ROADWAY
					0005	0005
44213204	TIE BARS 3/4"	EACH	877		156	721
67100100	MOBILIZATION	LSUM	1.0		0.6	0.4
70100205	TRAFFIC CONTROL AND PROTECTION, STANDARD 701401	EACH	2		2	
70100420	TRAFFIC CONTROL AND PROTECTION, STANDARD 701411	EACH	6		6	
70100600	TRAFFIC CONTROL AND PROTECTION, STANDARD 701336	LSUM	1			1
70102630	TRAFFIC CONTROL AND PROTECTION, STANDARD 701601	LSUM	1			1
70102637	TRAFFIC CONTROL AND PROTECTION, STANDARD 701701	EACH	2			2
70106800	CHANGEABLE MESSAGE SIGN	CAL MO	12		6	6
X4406040	PARTIAL DEPTH REMOVAL, TYPE I, 4"	SO YD	39.6		23.8	15.8
X4406240	PARTIAL DEPTH REMOVAL, TYPE II, 4"	SO YD	133.4		69.0	64.4
X4420676	CLASS B PATCHES, TYPE IV, 9 INCH (SPECIAL)	SO YD	342.2			342.2
X4421000	PARTIAL DEPTH PATCHING	TON	38.9		20.8	18.1
X7010410	SPEED DISPLAY TRAILER	CAL MO	3		3	

13

• JOHNSON / MASSAC

CONTRACT NO. 78464

I-24 PATCHING SCHEDULE

EASTBOUND I-24													
LOCATION #1			NUMBER OF PATCHES	WIDTH	LENGTH	AREA	CLASS A PATCH, TY I, 12 IN	CLASS A PATCH, TY II, 12 IN	CLASS A PATCH, TY III, 12 IN	CLASS A PATCH, TY IV, 12 IN	SAW CUTS	TIE BARS	PATCHING REINFORCEMENT
STA.	TO	STA.		FOOT	FOOT	SQ YD	SQ YD	SQ YD	SQ YD	SQ YD	FOOT	EACH	SQ YD
134+80	TO	263+10	3	6	4.5	3.0	9.0	.	.	.	99	-	9.0
134+80	TO	263+10	1	12	4.5	6.0		6.0		57			6.0
134+80	TO	263+10	1	6	6.0	4.0	4.0			36			4.0
333+27.60	=	333+27.60											
421+50	TO	429+34.43	1	12	4.5	6.0	.	6.0	.	57	-		6.0
429+34.43	=	429+36.09						.					
429+36.09	TO	524+83.61	2	6	4.5	3.0	6.0		.	66	-		6.0
429+36.09	TO	524+83.61	1	6	75.0	50.0			50.0	174	38		50.0
524+83.61	=	102+46.58											
102+46.58	TO	133+63.21											
133+63.21	=	133+66.46											
133+66.46	TO	178+70	1	12	4.5	6.0	.	6.0	.	57			6.0
133+66.46	TO	178+70	2	12	10.0	13.3		26.6		136			26.6
288+00.86	=	287+96.99											
347+62	TO	499+01.37	17	12	4.5	6.0		102.0		969			102.0
347+62	TO	499+01.37	2	6	6.0	4.0	8.0			72			8.0
347+62	TO	499+01.37	1	12	6.0	8.0		8.0		60			8.0
347+62	TO	499+01.37	1	6	15.0	10.0		10.0		54			10.0
347+62	TO	499+01.37	1	12	25.0	33.3			33.3	98	13		33.3
347+62	TO	499+01.37	1	12	30.0	40.0			40.0	108	15		40.0
347+62	TO	499+01.37	1	12	12.0	16.0			16.0	72			16.0
347+62	TO	499+01.37	1	12	10.0	13.3		13.3		68			13.3
347+62	TO	499+01.37	1	6	20.0	13.3		13.3		64			13.3
499+01.37	=	78+90.80											
78+90.80	TO	236+52.37	1	6	23.0	15.3	.	.	15.3	70	12		15.3
78+90.80	TO	236+52.37	3	6	4.5	3.0	9.0			99			9.0
78+90.80	TO	236+52.37	5	12	4.5	6.0		30.0		285			30.0
78+90.80	TO	236+52.37	1	12	10.0	13.3		13.3		68			13.3
236+52.37	=	236+57.01											
386+92	TO	403+54.97	2	12	4.5	6.0	.	12.0	.	114			12.0
386+92	TO	403+54.97	1	12	10.0	13.3		13.3		68			13.3
403+54.97	=	403+52.86											
403+52.86	TO	456+69.50	3	12	4.5	6.0		18.0		171			18.0
I-24 EASTBOUND TOTALS							36.0	277.8	31.3	123.3	3,122	78	468.4

QUANTITIES SHOWN IN THE PLANS FOR PATCHING ARE ESTIMATES. THE ACTUAL AMOUNT OF PATCHING REQUIRED SHALL BE DETERMINED BY THE ENGINEER.

CONT. I-24 PATCHING SCHEDULE

WESTBOUND I-24													
LOCATION #1			NUMBER OF PATCHES	WIDTH FOOT	LENGTH FOOT	AREA SQ YD	CLASS A PATCH, TY I, 12 IN	CLASS A PATCH, TY II, 12 IN	CLASS A PATCH, TY III, 12 IN	CLASS A PATCH, TY IV, 12 IN	SAW CUTS	TIE BARS	PATCHING REINFORCEMENT
STA.	TO	STA.					SQ YD	SQ YD	SQ YD	SQ YD	SQ YD	FOOT	EACH
134+80	TO	333+27.60	3	6	4.5	3.0	9.0	.	.	.	99	-	9.0
134+80	TO	333+27.60	1	12	4.5	6.0		6.0			57		6.0
134+80	TO	333+27.60	1	6	6.0	4.0	4.0				36		4.0
333+27.60	=	1333+27.60											
1333+27.60	TO	1429+60.80	1	12	4.5	6.0	.	6.0	.	.	57	-	6.0
1429+60.80	=	429+36.09											
429+36.09	TO	524+83.61	2	6	4.5	3.0	6.0		.	.	66	-	6.0
429+36.09	TO	524+83.61	1	6	75.0	50.0				50.0	174	38	50.0
524+83.61	=	102+46.58											
102+46.58	TO	133+63.21											
133+63.21	=	131+77.98											
131+77.98	TO	287+99.79	1	12	4.5	6.0	.	6.0	.		57		6.0
131+77.98	TO	287+99.79	2	12	10.0	13.3		26.6			136		26.6
287+99.79	=	287+96.99											
287+96.99	TO	499+01.37	17	12	4.5	6.0		102.0			969		102.0
287+96.99	TO	499+01.37	2	6	6.0	4.0	8.0				72		8.0
287+96.99	TO	499+01.37	1	12	6.0	8.0		8.0			60		8.0
287+96.99	TO	499+01.37	1	6	15.0	10.0		10.0			54		10.0
287+96.99	TO	499+01.37	1	12	25.0	33.3				33.3	98	13	33.3
287+96.99	TO	499+01.37	1	12	30.0	40.0				40.0	108	15	40.0
287+96.99	TO	499+01.37	1	12	12.0	16.0			16.0		72		16.0
287+96.99	TO	499+01.37	1	12	10.0	13.3		13.3			68		13.3
287+96.99	TO	499+01.37	1	6	20.0	13.3		13.3			64		13.3
499+01.37	=	78+90.80											
78+90.80	TO	236+52.37	1	6	23.0	15.3	.	.	15.3	.	70	12	15.3
78+90.80	TO	236+52.37	3	6	4.5	3.0	9.0				99		9.0
78+90.80	TO	236+52.37	5	12	4.5	6.0		30.0			285		30.0
78+90.80	TO	236+52.37	1	12	10.0	13.3		13.3			68		13.3
236+52.37	=	597+79.11											
597+79.11	TO	766+19.2	2	12	4.5	6.0	.	12.0	.	.	114		12.0
597+79.11	TO	766+19.2	1	12	10.0	13.3		13.3			68		13.3
766+19.2	=	403+52.86											
403+52.86	TO	456+69.50	3	12	4.5	6.0		18.0			171		18.0
I-24 WESTBOUND TOTALS							36.0	277.8	31.3	123.3	3,122	78	468.4
I-24 PROJECT TOTALS							72.0	555.6	62.6	246.6	6,244	156	936.8

QUANTITIES SHOWN IN THE PLANS FOR PATCHING ARE ESTIMATES. THE ACTUAL AMOUNT OF PATCHING REQUIRED SHALL BE DETERMINED BY THE ENGINEER.

I 24 PARTIAL DEPTH PATCHING SCHEDULE

EASTBOUND I-24										
LOCATION #1			NUMBER OF PATCHES	WIDTH	LENGTH	AREA	PARTIAL DEPTH REMOVAL, TY I, 4 IN	PARTIAL DEPTH REMOVAL, TY II, 4 IN	PARTIAL DEPTH PATCHING	BITUMINOUS MATERIALS (PRIME COAT)
STA.	TO	STA.		FOOT	FOOT	SQ YD	SQ YD	SQ YD	TON	POUND
134+80	TO	263+10	1	2	2	0.4	0.4		0.1	0.2
134+80	TO	263+10	1	2	4	0.9	0.9		0.2	0.4
333+27.60	=	333+27.60								
429+34.43	=	429+36.09								
447+90	TO	505+98	1	2	2	0.4	0.4		0.1	0.2
447+90	TO	505+98	1	4	6	2.7	2.7		0.6	1.2
524+83.61	=	102+46.58								
120+52	TO	118+40	1	2	2	0.4	0.4		0.1	0.2
120+52	TO	118+40	2	2	4	0.9	1.8		0.4	0.8
120+52	TO	118+40	1	2	80	17.8		17.8	4.0	8.0
133+63.21	=	133+66.46								
288+00.86	=	287+96.99								
410+98	TO	453+22	1	2	75	16.7		16.7	3.7	7.5
410+98	TO	453+22	1	2	4	0.9	0.9		0.2	0.4
410+98	TO	453+22	1	2	20	4.4	4.4		1.0	2.0
499+01.37	=	78+90								
I-24 EASTBOUND TOTALS							11.9	34.5	10.4	20.9

WESTBOUND I-24										
LOCATION #1			NUMBER OF PATCHES	WIDTH	LENGTH	AREA	PARTIAL DEPTH REMOVAL, TY I, 4 IN	PARTIAL DEPTH REMOVAL, TY II, 4 IN	PARTIAL DEPTH PATCHING	BITUMINOUS MATERIALS (PRIME COAT)
STA.	TO	STA.		FOOT	FOOT	SQ YD	SQ YD	SQ YD	TON	POUND
134+80	TO	263+10	1	2	2	0.4	0.4		0.1	0.2
134+80	TO	263+10	1	2	4	0.9	0.9		0.2	0.4
333+27.60	=	1333+27.60								
1429+60.80	=	429+36.09								
447+90	TO	505+98	1	2	2	0.4	0.4		0.1	0.2
447+90	TO	505+98	1	4	6	2.7	2.7		0.6	1.2
524+83.61	=	102+46.58								
120+52	TO	118+40	1	2	2	0.4	0.4		0.1	0.2
120+52	TO	118+40	2	4	2	0.9	1.8		0.4	0.8
120+52	TO	118+40	1	2	80	17.8		17.8	4.0	8.0
133+63.21	=	131+77.98								
287+99.79	=	287+96.99								
410+98	TO	453+22	1	2	75	16.7		16.7	3.7	7.5
410+98	TO	453+22	1	2	4	0.9	0.9		0.2	0.4
410+98	TO	453+22	1	2	20	4.4	4.4		1.0	2.0
499+01.37	=	78+90								
I-24 WESTBOUND TOTALS							11.9	34.5	10.4	20.9
I-24 PROJECT TOTALS							23.8	69.0	20.8	41.8

QUANTITIES SHOWN IN THE PLANS FOR PATCHING ARE ESTIMATES. THE ACTUAL AMOUNT OF PATCHING REQUIRED SHALL BE DETERMINED BY THE ENGINEER.

US 45 PATCHING SCHEDULE

CLASS A PATCHING											
LOCATION # 2	NUMBER OF PATCHES	WIDTH	LENGTH	AREA	CLASS A PATCH, TY I, 8 IN	CLASS A PATCH, TY II, 8 IN	CLASS A PATCH, TY III, 8 IN	CLASS A PATCH, TY IV, 8 IN	SAW CUTS	TIE BARS	PATCHING REINFORCEMENT
		FOOT	FOOT	SQ YD	SQ YD	SQ YD	SQ YD	SQ YD	FOOT	EACH	SQ YD
US 45	2	6	5	3.3	6.6	.	.	.	68	-	6.6
US 45	5	6	12	8.0	.	40.0	.	.	240	-	40.0
US 45	1	6	15	10.0	.	10.0	.	.	54	-	10.0
US 45	1	6	24	16.0	.	.	16.0	.	72	12	16.0
US 45	2	6	50	33.3	.	.	.	66.6	248	50	66.6
US 45	1	6	75	50.0	.	.	.	50.0	174	38	50.0
US 45	1	12	10	13.3	.	13.3	.	.	68	-	13.3
US 45	1	12	12	16.0	.	.	16.0	.	72	-	16.0
US 45 TOTALS					6.6	63.3	32.0	116.6	996	101	218.5

QUANTITIES SHOWN IN THE PLANS FOR PATCHING ARE ESTIMATES. THE ACTUAL AMOUNT OF PATCHING REQUIRED SHALL BE DETERMINED BY THE ENGINEER.

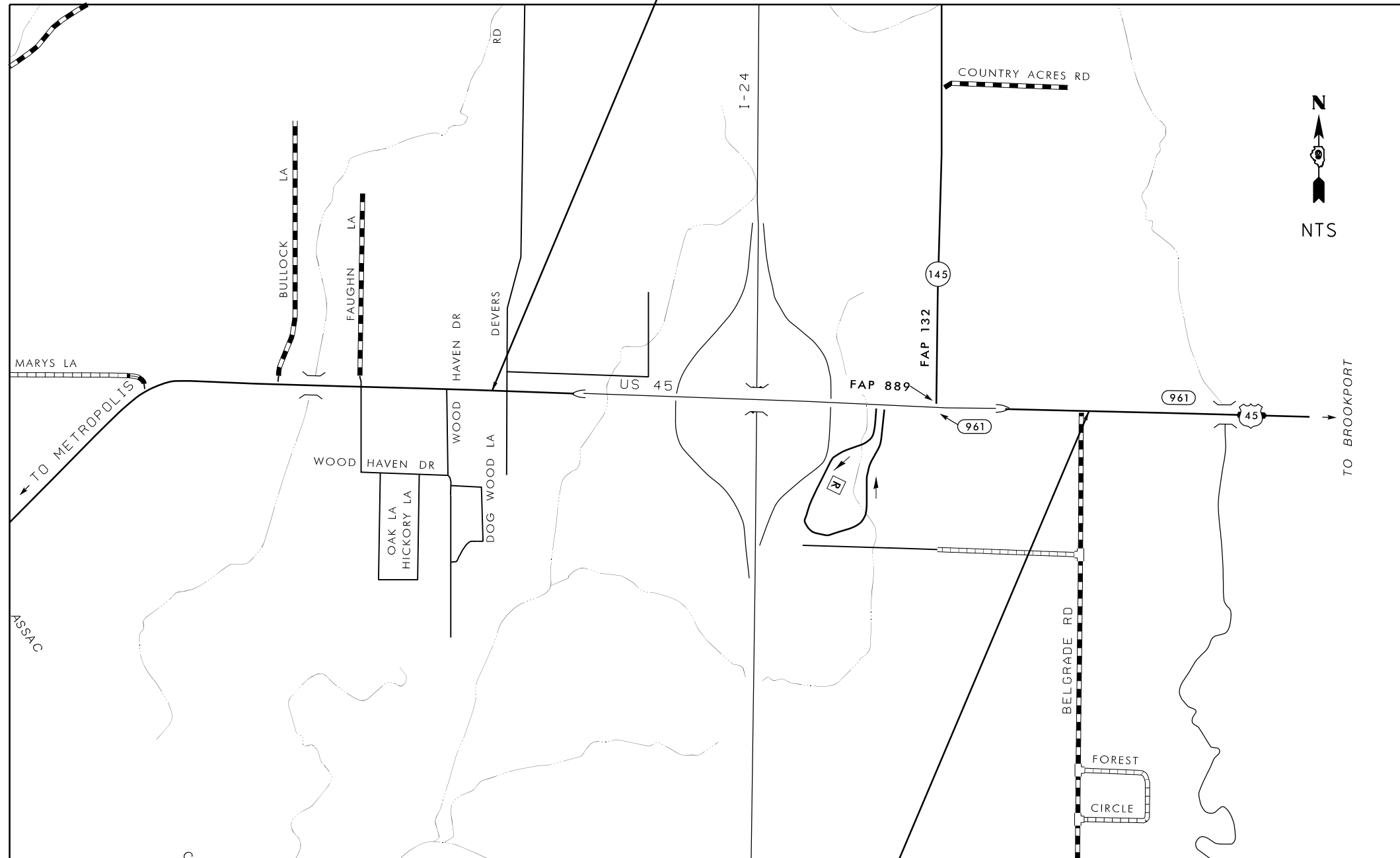
CLASS B PATCHING & CLASS B PATCHING SPECIAL										
LOCATION # 2	NUMBER OF PATCHES	WIDTH	LENGTH	AREA	CLASS B PATCH, TY II, 10 IN	CLASS B PATCH, TY IV, 9 INCH (SPECIAL)	PAVEMENT FABRIC	DOWEL BARS	SAW CUTS	TIE BARS
		FOOT	FOOT	SQ YD	SQ YD	SQ YD	SQ YD	EACH	FOOT	EACH
US 45	9	12	6	8.0	72.0			216	432	-
US 45	1	4	770	342.2		342.2	342.2	-	1548	620
US 45 TOTALS					72.0	342.2	342.2	216	1,980	620

QUANTITIES SHOWN IN THE PLANS FOR PATCHING ARE ESTIMATES. THE ACTUAL AMOUNT OF PATCHING REQUIRED SHALL BE DETERMINED BY THE ENGINEER.

PARTIAL DEPTH PATCHING								
LOCATION # 2	NUMBER OF PATCHES	WIDTH	LENGTH	AREA	PARTIAL DEPTH REMOVAL, TY I, 4 IN	PARTIAL DEPTH REMOVAL, TY II, 4 IN	PARTIAL DEPTH PATCHING	BITUMINOUS MATERIALS (PRIME COAT)
		FOOT	FOOT	SQ YD	SQ YD	SQ YD	TON	POUND
US 45	5	2	2	0.4	2.0		0.5	1.0
US 45	1	2	10	2.2	2.2		0.5	1.0
US 45	7	2	4	0.9	6.3		1.4	2.8
US 45	1	2	12	2.7	2.7		0.6	1.2
US 45	1	2	60	13.3		13.3	3.0	6.0
US 45	1	2	80	17.8		17.8	4.0	8.0
US 45	2	2	6	1.3	2.6	.	0.6	1.2
US 45	1	2	150	33.3		33.3	7.5	15.0
US 45 TOTALS					15.8	64.4	18.1	36.2

QUANTITIES SHOWN IN THE PLANS FOR PATCHING ARE ESTIMATES. THE ACTUAL AMOUNT OF PATCHING REQUIRED SHALL BE DETERMINED BY THE ENGINEER.

PROJECT BEGINS
NEAR DEVERS RD AT STA. 163+52.96
US 45 (F.A.P. 889)



PROJECT ENDS
NEAR BELGRADE RD AT STA. 18+40
US 45 (F.A.P. 889)

FILE NAME =	USER NAME = brandonja	DESIGNED -	REVISED -
p:\11\084EBIDINTEG\illinois.gov\PIWIDOT\Documents\IDOT Offices\District 9\Projects\Con	DRAWN = 2016\78464\CADData\CADsheets\78464plan.dgn	CHECKED -	REVISED -
Default	PLOT DATE = 5/11/2015	DATE -	REVISED -

**STATE OF ILLINOIS
DEPARTMENT OF TRANSPORTATION**

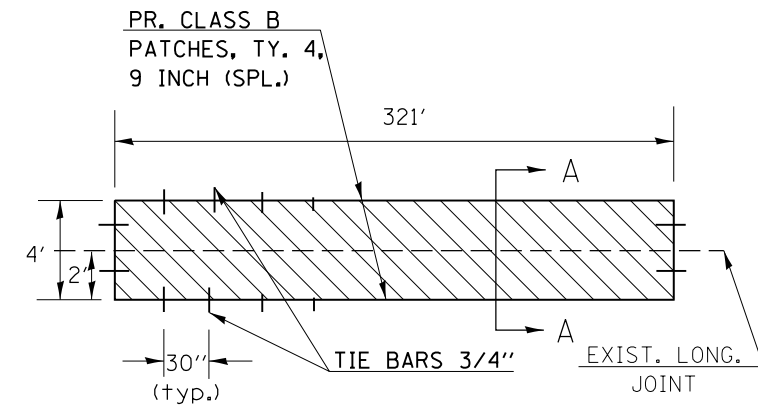
LOCATION MAP - US 45 /LOCATION #2

SCALE: SHEET OF SHEETS STA. TO STA.

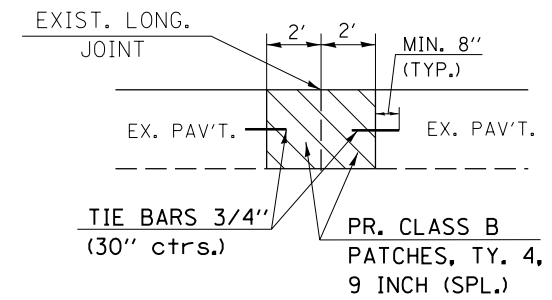
F.A.I. RTE.	SECTION	COUNTY	TOTAL SHEETS	SHEET NO.
24	D9 PATCH 2016-3	*	11	10
			CONTRACT NO. 78464	
ILLINOIS FED. AID PROJECT				

• JOHNSON / MASSAC

DETAIL FOR CLASS B PATCHES (SPECIAL)



PLAN VIEW



SEC. A-A

NOTE: SEE SPECIAL PROVISIONS FOR INFORMATION ON CONSTRUCTION & PAYMENT OF CLASS B PATCHES, TY. 4, 9 INCH (SPECIAL).

FILE NAME =	USER NAME = brandonja	DESIGNED -	REVISED -
p:\11\084EBIDINTEG.illinois.gov\PIWIDOT\Documents\IDOT Offices\District 9\Projects\Con	DRAWN =	2016\78464\CADData\CADsheets\78464	REVISED plan.dgn
Default	PLOT SCALE = 100.0000' / in.	CHECKED -	REVISED -
	PLOT DATE = 5/11/2015	DATE -	REVISED -

STATE OF ILLINOIS
DEPARTMENT OF TRANSPORTATION

DETAIL - CLASS B PATCHES (SPECIAL)

SCALE: SHEET OF SHEETS STA. TO STA.

F.A.I. RTE.	SECTION	COUNTY	TOTAL SHEETS	SHEET NO.
24	D9 PATCH 2016-3	*	11	11
CONTRACT NO. 78464			ILLINOIS FED. AID PROJECT	

* JOHNSON / MASSAC