

INDEX OF SHEETS

1	COVER SHEET
2	GENERAL NOTES, SUMMARY OF QUANTITIES, & TYPICAL CROSS SECTIONS
3	STORM SEWER STRUCTURES & SCHEDULE AND ELECTRICAL SCHEDULES
4	OVERALL PLAN SHEET
5-7	PLAN AND PROFILE
(5)	6th STREET (EAST)
(6)	6th STREET (WEST)
(7)	PINE STREET (SOUTH)
8-10	MISCELLANEOUS DETAILS

STATE OF ILLINOIS
DEPARTMENT OF TRANSPORTATION
DIVISION OF HIGHWAYS

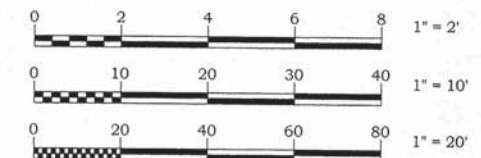
PLANS FOR PROPOSED
DOWNTOWN SIDEWALK IMPROVEMENTS
6th STREET ADDITION

PROJECT NO.: TE-00D7(073)
JOB NO.: C-97-080-15
SECTION: 13-00054-01-SW
CITY OF MARSHALL
CLARK COUNTY, ILLINOIS
ENHANCEMENT FUNDS

CITY OF MARSHALL, CLARK COUNTY
6th STREET ADDITION
PROJECT No. TE-00D7 (073)
JOB No. C-97-080-15
SECTION 13-00054-01-SW
CONTRACT NO. 95773
SHEET 1 OF 10

ILLINOIS HIGHWAY STANDARDS	
000001-06	STANDARD SYMBOLS, ABBREVIATIONS AND PATTERNS
424001-08	PERPENDICULAR CURB RAMPS FOR SIDEWALKS
424026-01	ENTRANCE / ALLEY PEDESTRIAN CROSSINGS
442201-03	CLASS C AND D PATCHES
602301-04	INLET - TYPE A
602306-03	INLET - TYPE B
602401-03	MANHOLE TYPE A
602601-03	PRECAST REINFORCED CONCRETE FLAT SLAB TOP
604001-04	FRAME AND LIDS TYPE 1
604006-05	FRAME AND GRATE TYPE 3
606001-06	CONCRETE CURB TYPE B AND COMBINATION CURB AND GUTTER
701501-06	URBAN LANE CLOSURE, 2L, 2W, UNDIVIDED
701801-05	SIDEWALK, CORNER OR CROSSWALK CLOSURE
701901-04	TRAFFIC CONTROL DEVICES
814001-03	HANDHOLES
836001-02	LIGHT POLE FOUNDATION
873001-02	HANDHOLE GROUNDING & BONDING

SCALES { PLAN: 1 INCH = 10 FEET
PROFILE HORIZONTAL: 1 INCH = 10 FEET
PROFILE VERTICAL: 1 INCH = 2 FEET
TYPICAL CROSS SECTIONS: NOT-TO-SCALE



FULL SIZE PLANS HAVE BEEN PREPARED USING STANDARD ENGINEERING SCALES, REDUCED SIZED PLANS MAY NOT CONFORM TO STANDARD SCALES, IN MAKING MEASUREMENTS ON REDUCED PLANS, THE ABOVE SCALES MAY BE USED.

FUNCTIONAL CLASSIFICATION - 6th STREET
TRAFFIC COUNT - 6th STREET - 1400
DESIGN SPEED - 30 MPH



6TH STREET
SECTION 13-00054-01-SW
STA. 31+57.13

6TH STREET
SECTION 13-00054-01-SW
STA. 29+60.69

PROJECT LOCATION

CITY OF MARSHALL
(NOT TO SCALE)
LOCATION MAP

TOTAL LENGTH OF 6th STREET = 196.44 LIN. FT. = 0.04 MILES
NET LENGTH OF PROJECT = 196.44 LIN. FT. = 0.04 MILES

ILLINOIS DEPARTMENT OF TRANSPORTATION	
APPROVED:	<u>6/5/15</u> <i>Carrie Zander</i> CITY OF MARSHALL - MAYOR
PASSED:	<u>6/11/15</u> <i>Maurice O'Keefe</i> DISTRICT 7 ENGINEER OF LOCAL ROADS & STREETS
RELEASING FOR BID BASED ON LIMITED REVIEW:	<u>6/11/15</u> <i>Roger L. Driscoll</i> DEPUTY DIRECTOR OF HIGHWAYS, REGION 4 ENGINEER

Louis R. Curl 6/5/15
LOUIS R. CURL DATE
ILLINOIS REGISTERED PROFESSIONAL ENGINEER NO. 38867
LICENSE EXPIRES 11/30/15



Call Before You Dig
JULIE ILLINOIS ONE-CALL SYSTEM
CONTACT JULIE AT 811 OR 800-892-0123
With the following:
County CLARK
City/Township CITY OF MARSHALL / MARSHALL
Sec & 14 Sec No. NW 1/4 SEC. 24 - T11N-R12W, 2nd P.M.
48 HOURS (2 working days) BEFORE YOU DIG

PREPARED BY,
FRANCIS ASSOCIATES
CONSULTING ENGINEERS
LAND SURVEYORS
330 NORTH CENTRAL AVENUE
PARIS, ILLINOIS 61944
217-465-5306
PROFESSIONAL DESIGN FIRM #184-001406

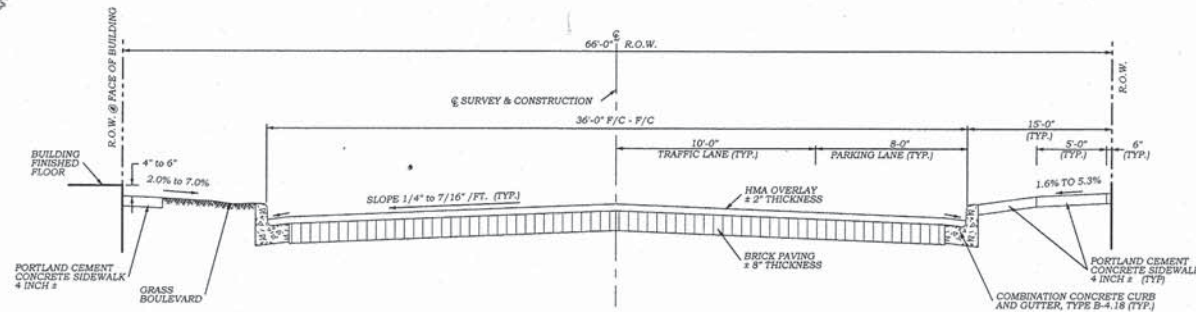
SUMMARY OF QUANTITIES

CODE NUMBER	ITEM	UNIT	QUANTITY
20800150	TRENCH BACKFILL	CU YD	33.8
20900110	POROUS GRANULAR BACKFILL	CU YD	49.4
35101600	AGGREGATE BASE COURSE, TYPE B 4"	SQ YD	175.6
40200800	AGGREGATE SURFACE COURSE, TYPE B	TON	15
42300200	PORTLAND CEMENT CONCRETE DRIVEWAY PAVEMENT, 6 INCH	SQ YD	34.6
42400100	PORTLAND CEMENT CONCRETE SIDEWALK 4 INCH	SQ FT	4095.7
42400300	PORTLAND CEMENT CONCRETE SIDEWALK 6 INCH	SQ FT	156.7
42400800	DETECTABLE WARNINGS	SQ FT	80
44000200	DRIVEWAY PAVEMENT REMOVAL	SQ YD	69.6
44000500	COMBINATION CURB AND GUTTER REMOVAL	FOOT	374
44000600	SIDEWALK REMOVAL	SQ FT	2600.2
44201329	CLASS C PATCHES, TYPE II, 8 INCH	SQ YD	32
550A0050	STORM SEWERS, CLASS A, TYPE 1 12"	FOOT	88.5
550A2320	STORM SEWERS, RUBBER GASKET, CLASS A, TYPE 1 12"	FOOT	34.5
60218400	MANHOLES, TYPE A, 4'-DIAMETER, TYPE 1 FRAME, CLOSED LID	EACH	1
60235700	INLETS, TYPE A, TYPE 3 FRAME AND GRATE	EACH	2
60240220	INLETS, TYPE B, TYPE 3 FRAME AND GRATE	EACH	1
60500060	REMOVING INLETS	EACH	3
60604400	COMBINATION CONCRETE CURB AND GUTTER, TYPE B-6.18	FOOT	374
67100100	MOBILIZATION	L SUM	1
70102620	TRAFFIC CONTROL AND PROTECTION, STANDARD 701501	L SUM	1
81028320	UNDERGROUND CONDUIT, PVC, 1" DIA.	FOOT	245
81400100	HANDHOLE	EACH	3
81702110	ELECTRIC CABLE IN CONDUIT, 600V (XLP-TYPE USE) 1/C NO. 10	FOOT	1034
81702120	ELECTRIC CABLE IN CONDUIT, 600V (XLP-TYPE USE) 1/C NO. 8	FOOT	592
83600200	LIGHT POLE FOUNDATION, 24" DIAMETER	FOOT	22.8
83600300	LIGHT POLE FOUNDATION, 30" DIAMETER	FOOT	5.7
X0321158	PARK BENCHES	EACH	2
X0326694	PLUG EXISTING STORM SEWERS	CU YD	1.5
XX008555	FURNISH AND INSTALL HANDRAIL	FOOT	53
XX000959	TRASH RECEPTACLES	EACH	1
XX007393	DECORATIVE LIGHT TYPE A	EACH	4
XX007394	DECORATIVE LIGHT TYPE B	EACH	1

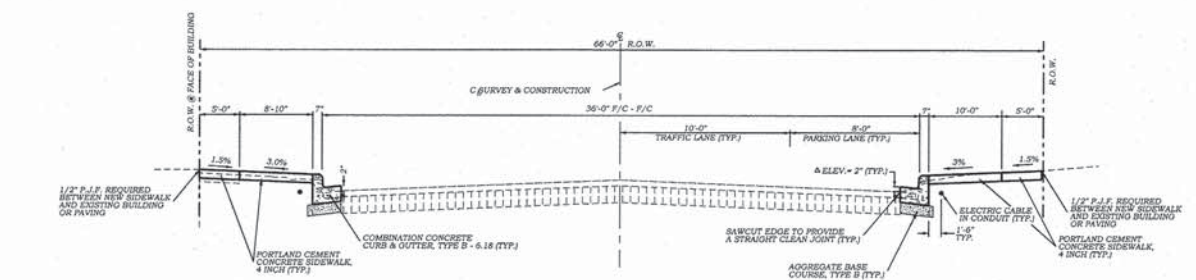
GENERAL NOTES

- THIS SECTION SHALL BE CONSTRUCTED IN ACCORDANCE WITH THE "STANDARD SPECIFICATIONS FOR ROAD & BRIDGE CONSTRUCTION" ADOPTED JANUARY 1, 2012.
- ANY REFERENCE TO STANDARDS THROUGHOUT THE PLANS SHALL BE INTERPRETED TO BE THE LATEST STANDARDS OF THE DEPARTMENT.
- PLAN ELEVATIONS ARE BASED ON U.S.G.S. ELEVATIONS.
- BEFORE WORKING WITH OR AROUND UTILITIES, THE CONTRACTOR SHALL BE RESPONSIBLE FOR CONTACTING THE ILLINOIS ONE-CALL SYSTEM JULIE AT 1-800-892-0123, 48 HOURS (EXCLUDING WEEKENDS AND/OR HOLIDAYS) PRIOR TO DIGGING. JULIE WILL NOTIFY THE OWNERS/OPERATORS OF UNDERGROUND FACILITIES WHO ARE JULIE MEMBERS OF THE PLANNED DIGGING ACTIVITY. THE FOLLOWING IS A LIST OF UTILITIES:
 - A) ELECTRIC AND GAS - CITY OF MARSHALL UTILITIES
201 SOUTH MICHIGAN AVENUE
P.O. BOX 298
MARSHALL, IL 62441
(217) 826-8087
 - B) TELEPHONE - FRONTIER COMMUNICATIONS
 - C) WATER AND SEWER - CITY OF MARSHALL UTILITIES
201 SOUTH MICHIGAN AVENUE
P.O. BOX 298
MARSHALL, IL 62441
(217) 826-8087
 - D) CABLE TELEVISION - MEDIACOM
1 (800) 874-2924

SPECIALTY ITEMS



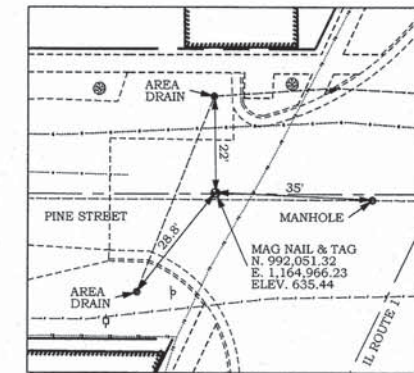
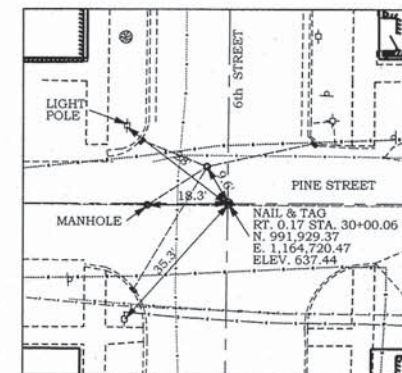
EXISTING TYPICAL CROSS SECTION



PROPOSED TYPICAL CROSS SECTION

BENCH MARKS

BM #1
 NGS BENCHMARK: A 15 1931
 TABLET IN CONCRETE AT THE SOUTHEAST CORNER OF THE CLARK COUNTY COURTHOUSE LAWN IN THE CITY OF MARSHALL, IL.
 N. 992,245.70 E. 1,164,527.59
 NAVD 88 ELEVATION: 641.14 (NGS ELEV. 641.10)



HORIZONTAL CONTROL POINTS

FRANCIS ASSOCIATES
 CONSULTING ENGINEERS
 LAND SURVEYORS
 330 NORTH CENTRAL AVENUE
 PARIS, ILLINOIS 61944
 PH. (217) 465-5306
 PROFESSIONAL DESIGN FIRM #184-001406



SCALES	
PLAN :	N-T-S
REVISED DATE	6/4/15
REVISED DATE	

FRANCIS ASSOC.
 FILE NO.
M-139-5

GENERAL NOTES, SUMMARY OF QUANTITIES, & TYPICAL SECTIONS
 DOWNTOWN SIDEWALK IMPROVEMENTS - 6th STREET ADDITION
 CITY OF MARSHALL, ILLINOIS, CLARK COUNTY

STORM SEWER STRUCTURES										
PT.	OFFSET	STATION	STRUCTURE TYPE	*TOP OF STRUCTURE OR FLAT SLAB ELEV.	*TOP OF LID OR FLOWLINE OF GRATE ELEV.	INV. ELEV.	INV. ELEV.	INV. ELEV.	INV. ELEV.	SYMBOL
1	22' LT	30+15.5	INLET, TYPE A, TYPE 3 FRAME AND GRATE	636.55	636.55	634.78 (S)				
2	22' LT	29+80	INLETS, TYPE B, TYPE 3 FRAME AND GRATE		636.76	633.26 (N)	633.16 (E)			
3	20.5' RT	30+17.8	INLET, TYPE A, TYPE 3 FRAME AND GRATE		637.10	635.33 (S)				
4	15.1 RT	29+79.7	MANHOLE, TYPE A, 4' DIA., TYPE 1 FRAME, CLOSED LID	636.24	636.99	632.83 (E)	632.93 (W)	633.03 (N)		
5			EXISTING INLET (BY OTHERS) (Connect 12" to Inlet)		634.87	631.72 (W)				

* => ALL TOP OF FLAT SLAB OR CONE ELEVATIONS AND LID/FLOWLINE ELEVATIONS SHALL BE CONFIRMED IN THE FIELD PRIOR TO INSTALLATION.

STORM SEWER SCHEDULE						
PT.	PT.	SLOPE (%)	CLASS A, TYPE 1 12" DIA. (FOOT)	RUBBER GASKET, CLASS A, TYPE 1 12" DIA. (FOOT)	TRENCH BACKFILL (CU. YD.)	NOTES
1	2	4.82	31.5		6.9	
2	4	0.70	33		10.4	
3	4	6.67		34.5	7.5	
4	5*	0.47	24		9	
TOTALS IN CONTRACT			88.5	34.5	33.8	
4*	5*	0.47	213.5		50.3	
TOTALS NOT IN CONTRACT (BY OTHERS)			213.5	0	50.3	
OVERALL TOTALS			302	34.5	84.1	

*STORM SEWER CONSTRUCTED TO PROJECT LIMITS. REMAINING LENGTH DONE BY OTHERS

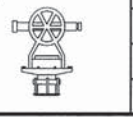
HANDHOLES SCHEDULE					LIGHT POLE FOUNDATION SCHEDULE						
ID NO.	STATION	LEFT	RIGHT	OFFSET	DESCRIPTION (EACH)	ID NO.	STATION	LEFT	RIGHT	OFFSET	DESCRIPTION (EACH)
H15	31+52.5	X		20'	COMPOSITE CONCRETE	F44	31+20.8	X		20.5'	24" DIAMETER - CONCRETE
H14	31+52.0		X	19.5'	COMPOSITE CONCRETE	F45	30+76.0	X		20.5'	24" DIAMETER - CONCRETE
H16	30+41.5		X	20'	COMPOSITE CONCRETE	F46	30+18.7	X		22.7'	30" DIAMETER - CONCRETE
						F47	31+30.0		X	20.5'	24" DIAMETER - CONCRETE
						F48	30+86.0		X	20.5'	24" DIAMETER - CONCRETE

ELECTRIC CABLE IN CONDUIT SCHEDULE															
Circuit	ID NO. -	ID	UNDERGROUND CONDUIT, PVC, 1" DIA. 1' DEPTH (TYP.) (FOOT)	AMPS	Receptacles	#10 Wiring to Lighting (FOOT)	#8 (2hot, 2N) Wiring (FOOT)	Circuit	ID NO. -	ID	UNDERGROUND CONDUIT, PVC, 1" DIA. 1' DEPTH (TYP.) (FOOT)	AMPS	Receptacles	#10 Wiring to Lighting (FOOT)	#8 (2hot, 2N) Wiring (FOOT)
4	Controller 1							2	Controller 2						
	F28	H15	Existing	40		172			H9	H14	Existing	145			592
	H15	F44	Proposed	32	1.0	x	140		H14	F47	Proposed	22.5	1.0	x	102
	F44	F45	Proposed	45	1.0	x	192		F47	F48	Proposed	44	1.0	x	188
	F45	F46	Proposed	57	1.5	x	240		F48	F46	Proposed	44.5			
Controller #1 Circuit 4 Totals Proposed								Controller #2 Circuit 2 Totals Proposed							
			134	3.5	3	744	10				111	2.0	2	290	592
Overall Total Proposed															
			245	5	5	1034	392								

GENERAL NOTES:
 GROUND QUANTITY SHALL BE CONSIDERED INCLUDED IN LIGHTING CIRCUIT AMOUNTS.
 WIRE QUANTITIES DO NOT INCLUDE SLACK AT LIGHT OR WIRE GOING UP LIGHT POLES.



FRANCIS ASSOCIATES
 CONSULTING ENGINEERS
 LAND SURVEYORS
 330 NORTH CENTRAL AVENUE
 PARIS, ILLINOIS 61944
 PH. (217) 465-5306
 PROFESSIONAL DESIGN FIRM #184-001406



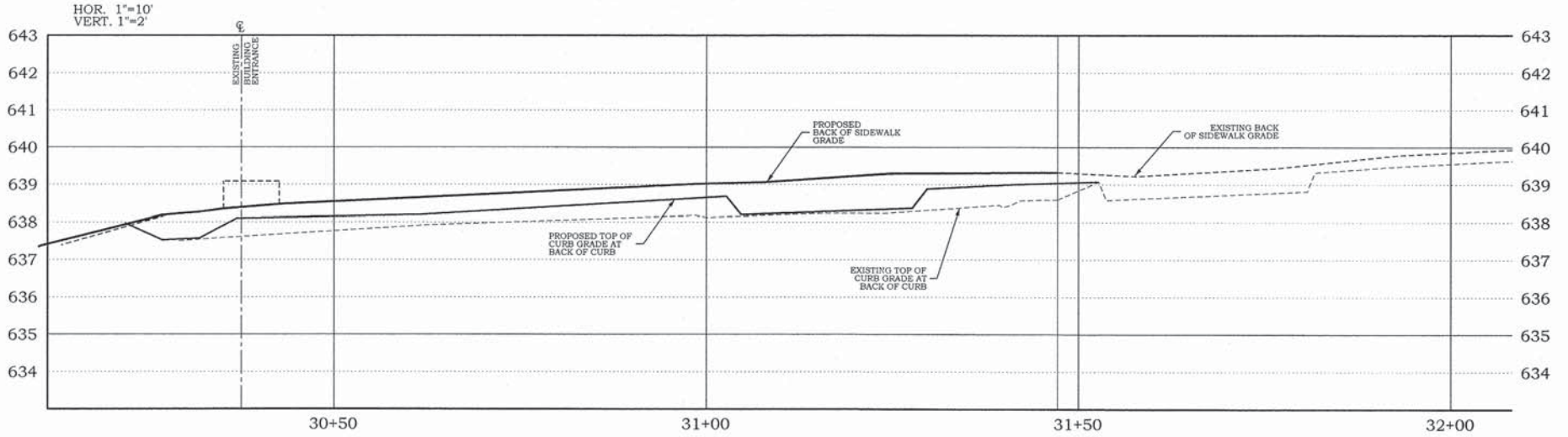
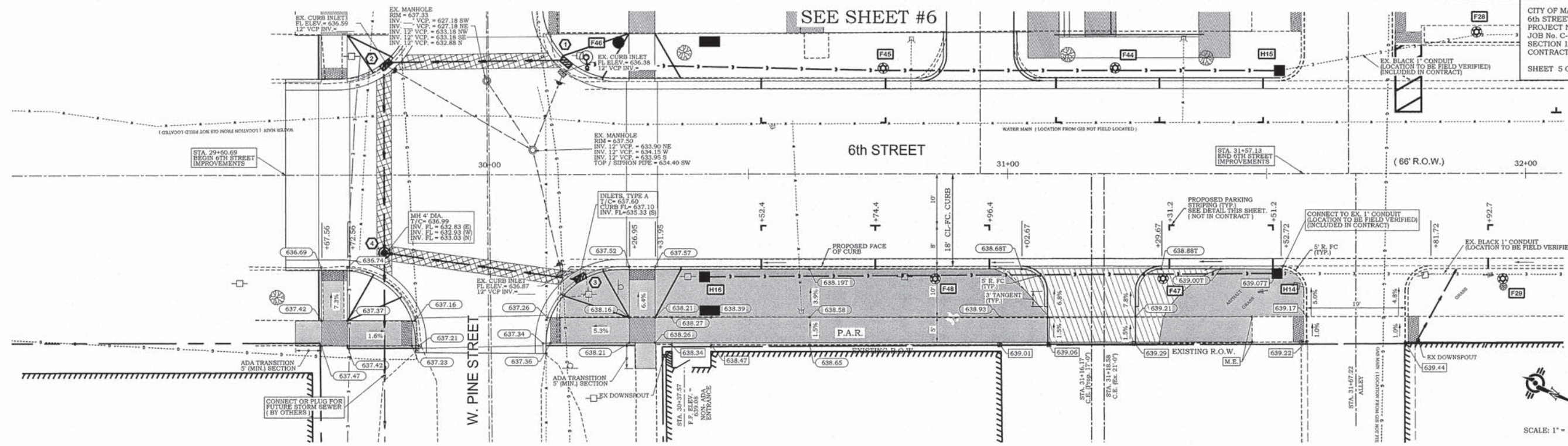
SCALES	DRAWN DATE	TLT 1/20/15
PLAN : HOR. 1"=40'	CHECKED DATE	
REVISED DATE	APPROVED DATE	
REVISED DATE	REVISED DATE	

FRANCIS
 ASSOC.
 FILE NO.
M-139-5

GENERAL LOCATION MAP

DOWNTOWN SIDEWALK IMPROVEMENTS - 6th STREET ADDITION
 CITY OF MARSHALL, ILLINOIS, CLARK COUNTY

SHEET NO.
4
 OF 10 SHEETS



PLUG EXISTING STORM SEWERS		
RT 18' STA. 30+13.5	0.5	CU YD
TOTAL=	0.5	CU YD

REMOVING INLETS		
RT 19.3' STA. 30+14.5	1	EACH
TOTAL=	1	EACH

INLETS, TYPE A, TYPE 3 FRAME AND GRATE		
RT 20.5' STA. 30+17.8	1	EACH
TOTAL=	1	EACH

COMBINATION CURB & GUTTER REMOVAL		
RT STA. 29+60.69 TO STA. 29+86.3	36.2	FOOT
RT STA. 30+10.33 TO STA. 31+52.7	153.1	FOOT
SHEET TOTAL=	189.3	FOOT

MANHOLE, TYPE A, 4' DIA., TYPE 1 FRAME, CLOSED LID		
RT 15.1' STA. 29+79.7	1	EACH
TOTAL=	1	EACH

SIDEWALK REMOVAL		
RT STA. 29+62.5 TO STA. 29+86.3	155.8	SQ. FT.
RT STA. 30+13.7 TO STA. 31+07.9	1,377.2	SQ. FT.
RT STA. 31+29.2 TO STA. 31+57.1	304.5	SQ. FT.
SHEET TOTAL =	1,837.5	SQ. FT.

PORTLAND CEMENT CONCRETE DRIVEWAY PAVEMENT, 6 INCH		
RT STA. 31+07.9 TO STA. 31+29.2	19.8	SQ. YD.
SHEET TOTAL=	19.8	SQ. YD.

DETECTABLE WARNINGS		
RT STA. 29+67.56 TO STA. 29+72.56	10	SQ. FT.
RT STA. 29+83.01 TO STA. 29+85.01	10	SQ. FT.
RT STA. 30+11.77 TO STA. 30+13.77	10	SQ. FT.
RT STA. 30+26.95 TO STA. 30+31.95	10	SQ. FT.
SHEET TOTAL=	40	SQ. FT.

AGGREGATE BASE COURSE, TYPE B 4"		
RT STA. 29+60.69 TO STA. 29+86.3	12	SQ YD
RT STA. 30+10.33 TO STA. 31+52.7	81	SQ YD
SHEET TOTAL=	93	SQ YD

DRIVEWAY PAVEMENT REMOVAL		
RT STA. 31+07.9 TO STA. 31+29.2	45.7	SQ. YD.
SHEET TOTAL=	45.7	SQ. YD.

PORTLAND CEMENT CONCRETE SIDEWALK 4 INCH		
RT STA. 29+62.5 TO STA. 29+86.3	251.6	SQ. FT.
RT STA. 30+10.8 TO STA. 31+07.9	1,488.5	SQ. FT.
RT STA. 31+29.2 TO STA. 31+57.1	411.0	SQ. FT.
SHEET TOTAL =	2,151.1	SQ. FT.

COMBINATION CONCRETE CURB AND GUTTER, TYP. B-6.18		
RT STA. 29+60.69 TO STA. 29+86.3	36.2	FOOT
RT STA. 30+10.33 TO STA. 31+52.7	153.1	FOOT
SHEET TOTAL=	189.3	FOOT

PARK BENCHES		
RT STA. 30+42.5	1	EACH
TOTAL=	1	EACH

CLASS C PATCHES, TYPE II 8"		
LT. & RT. STA. 29+79.7	12.0	SQ. YD.
RT STA. 29+79.7 TO STA. 30+15	10.7	SQ. YD.
TOTAL=	22.7	SQ. YD.

PORTLAND CEMENT CONCRETE SIDEWALK 6 INCH		
RT STA. 31+07.9 TO STA. 31+29.2	91.7	SQ. FT.
SHEET TOTAL=	91.7	SQ. FT.

POROUS GRANULAR BACKFILL		
RT STA. 29+62.5 TO STA. 29+86.3	0.6	CU. YD.
RT STA. 30+10.33 TO STA. 31+57.1	7.9	CU. YD.
SHEET TOTAL=	8.5	CU. YD.

DECORATIVE LIGHT TYPE A		
RT 20.5 STA. 30+86.0	1	EACH
RT 20.5 STA. 31+30.0	1	EACH
TOTAL=	2	EACH

LIGHT POLE FOUNDATION, 24" DIAMETER		
RT 20.5 STA. 30+86.0	5.7	FOOT
RT 20.5 STA. 31+30.0	5.7	FOOT
TOTAL=	11.4	FOOT

- GENERAL NOTES**
- PROVIDE 1/2" P.I.F. AROUND PERIMETER OF POWER POLES, LIGHT BASES, FIRE HYDRANTS AND TRAFFIC CONTROLLERS AND AT ALL LOCATIONS WHERE NEW SIDEWALK IS ADJACENT TO NEW CURB AND GUTTER.
 - EXISTING WATER METERS TO BE REMOVED AND REPLACED BY OWNER.
 - EXISTING FIRE HYDRANTS TO BE RELOCATED BY OWNER.
 - EXISTING LIGHT POLES, CONC. PLANTERS, PARK BENCHES, AND TRASH RECEPTACLES TO BE REMOVED BY OWNER.
- STRIPING DETAILS**
-

- LEGEND**
- XXX.XX EXISTING SPOT ELEV.
 - XXX.XXX EXISTING SPOT ELEV. TO MATCH
 - XXX.XXX PROPOSED SPOT ELEV.
 - XXX.XXX PROPOSED TOP OF CURB ELEV.
 - LEVEL LANDING TO BE CONSTRUCTED - 5'x5' DIMENSION UNLESS OTHERWISE NOTED. SLOPE IN EACH DIRECTION IS 1.0% UNLESS OTHERWISE NOTED.

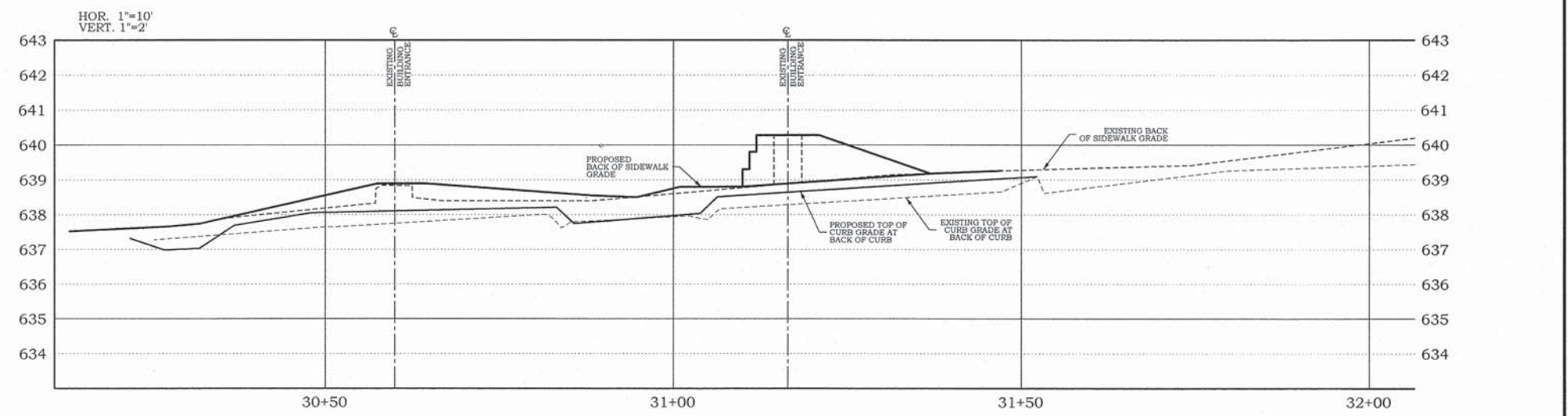
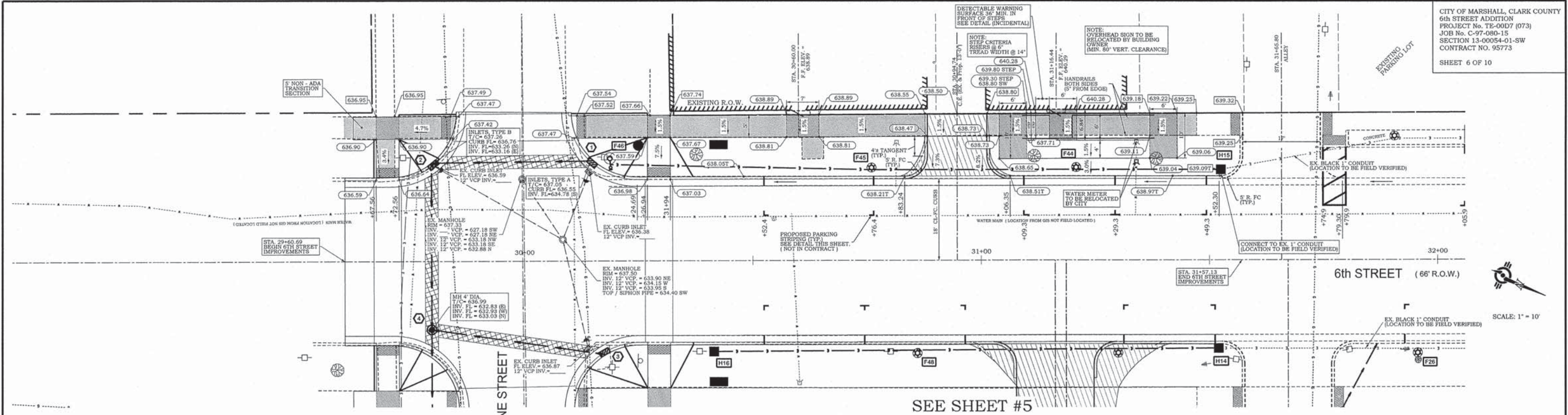
P:\New Projects\M-139-5 StreetScapePlan Sheets.dgn

FRANCIS ASSOCIATES
 CONSULTING ENGINEERS
 LAND SURVEYORS
 330 NORTH CENTRAL AVENUE
 PARIS, ILLINOIS 61944
 PH. (217) 465-5306
 PROFESSIONAL DESIGN FIRM #184-001406

SCALES		DRAWN	
PLAN: HOR. 1"=10'	VERT. 1"=2'	DATE	1/20/15
REVISION	DATE	CHECKED	DATE
REVISION	DATE	APPROVED	DATE
REVISION	DATE	REVISED	DATE

FRANCIS ASSOC.
 FILE NO.
M-139-5

PLAN AND PROFILE - 6th STREET (EAST SIDE)
DOWNTOWN SIDEWALK IMPROVEMENTS - 6th STREET ADDITION
 CITY OF MARSHALL, ILLINOIS, CLARK COUNTY



INLETS, TYPE A, TYPE 3 FRAME AND GRATE		PLUG EXISTING STORM SEWERS	
LT 22' STA. 30+15.5	1 EACH	LT 20' STA. 29+81.0	0.5 CU YD
TOTAL=	1 EACH	LT 18' STA. 30+13.5	0.5 CU YD
		TOTAL=	1.5 CU YD

INLETS, TYPE B, TYPE 3 FRAME AND GRATE		REMOVING INLETS	
LT 22' STA. 29+80	1 EACH	LT 21' STA. 29+81.0	1 EACH
TOTAL=	1 EACH	LT 19' STA. 30+14.5	1 EACH
		TOTAL=	2 EACH

PARK BENCHES		TRASH RECEPTACLES	
LT STA. 30+42.5	1 EACH	LT STA. 30+25	1 EACH
TOTAL=	1 EACH	TOTAL=	1 EACH

COMBINATION CURB & GUTTER REMOVAL	
LT STA. 29+60.69 TO STA. 29+85.7	33.6 FOOT
LT STA. 30+09.69 TO STA. 31+52.3	151.1 FOOT
SHEET TOTAL=	184.7 FOOT

SIDEWALK REMOVAL	
LT STA. 29+60.7 TO STA. 29+85.7	150.9 SQ. FT.
LT STA. 30+13.1 TO STA. 30+87.8	386.7 SQ. FT.
LT STA. 31+02.0 TO STA. 31+47.2	225.1 SQ. FT.
SHEET TOTAL =	762.7 SQ. FT.

DRIVEWAY PAVEMENT REMOVAL	
LT STA. 30+87.8 TO STA. 31+02.0	23.9 SQ. YD.
SHEET TOTAL=	23.9 SQ. YD.

CLASS C PATCHES, TYPE II 8"	
LT STA. 29+82.8 TO STA. 30+12.4	9.3 SQ. YD.
TOTAL=	9.3 SQ. YD.

PORTLAND CEMENT CONCRETE DRIVEWAY PAVEMENT, 6 INCH	
LT STA. 30+87.8 TO STA. 31+02.0	14.8 SQ. YD.
SHEET TOTAL=	14.8 SQ. YD.

PORTLAND CEMENT CONCRETE SIDEWALK 4 INCH	
LT STA. 29+60.7 TO STA. 29+85.7	216.6 SQ. FT.
LT STA. 30+10.3 TO STA. 30+87.8	1,010.3 SQ. FT.
LT STA. 31+02.0 TO STA. 31+56.7	717.7 SQ. FT.
SHEET TOTAL =	1,944.6 SQ. FT.

PORTLAND CEMENT CONCRETE SIDEWALK 6 INCH	
LT STA. 30+87.8 TO STA. 31+02.0	65.0 SQ. FT.
SHEET TOTAL=	65.0 SQ. FT.

DETECTABLE WARNINGS	
LT STA. 29+67.56 TO STA. 29+72.56	10 SQ. FT.
LT STA. 29+81.83 TO STA. 29+83.83	10 SQ. FT.
LT STA. 30+11.51 TO STA. 30+13.51	10 SQ. FT.
LT STA. 30+26.94 TO STA. 30+31.44	10 SQ. FT.
SHEET TOTAL =	40 SQ. FT.

COMBINATION CONCRETE CURB AND GUTTER, TYP. B-6.18	
LT STA. 29+60.69 TO STA. 29+85.7	33.6 FOOT
LT STA. 30+09.69 TO STA. 31+52.3	151.1 FOOT
SHEET TOTAL=	184.7 FOOT

POROUS GRANULAR BACKFILL	
LT STA. 29+60.7 TO STA. 29+85.7	1.4 CU. YD.
LT STA. 30+09.69 TO STA. 31+56.7	39.5 CU. YD.
SHEET TOTAL=	40.9 CU. YD.

FURNISH & INSTALL HANDRAIL	
LT STA. 31+08.9 TO 31+37.9	53.0 FOOT
TOTAL=	53.0 FOOT

DECORATIVE LIGHT TYPE A	
LT 20.5' STA. 30+76	1 EACH
LT 20.5' STA. 31+20.8	1 EACH
TOTAL=	2 EACH

LIGHT POLE FOUNDATION, 24" DIAMETER	
LT 20.5' STA. 30+76	5.7 FOOT
LT 20.5' STA. 31+20.8	5.7 FOOT
TOTAL=	11.4 FOOT

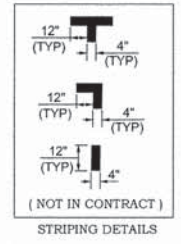
DECORATIVE LIGHT TYPE B	
LT 22.7' STA. 30+18.71	1 EACH
TOTAL=	1 EACH

LIGHT POLE FOUNDATION, 30" DIAMETER	
LT 22.7' STA. 30+18.71	5.7 FOOT
TOTAL=	5.7 FOOT

AGGREGATE BASE COURSE, TYPE B 4"	
LT STA. 29+60.69 TO STA. 29+85.7	11.2 SQ YD
LT STA. 30+09.69 TO STA. 31+52.3	71.4 SQ YD
SHEET TOTAL=	82.6 SQ YD

LEGEND

xxx.xx	EXISTING SPOT ELEV.
xxx.xx	EXISTING SPOT ELEV. TO MATCH
xxx.xx	PROPOSED SPOT ELEV.
xxx.xxt	PROPOSED TOP OF CURB ELEV.
[Symbol]	LEVEL LANDING TO BE CONSTRUCTED - 3'x3' DIMENSION UNLESS OTHERWISE NOTED. SLOPE IN EACH DIRECTION IS 1.0% UNLESS OTHERWISE NOTED.



- GENERAL NOTES
- PROVIDE 1/2" P.J.F. AROUND PERIMETER OF POWER POLES, LIGHT BASES, FIRE HYDRANTS AND TRAFFIC CONTROLLERS, AND AT ALL LOCATIONS WHERE NEW SIDEWALK IS ADJACENT TO NEW CURB AND GUTTER.
 - EXISTING WATER METERS TO BE REMOVED AND REPLACED BY OWNER.
 - EXISTING FIRE HYDRANTS TO BE RELOCATED BY OWNER.
 - EXISTING LIGHT POLES, CONC. PLANTERS, PARK BENCHES, AND TRASH RECEPTACLES TO BE REMOVED BY OWNER.

P:\New Projects\M-139-5 StreetScape\Plan Sheets.dgn

FRANCIS ASSOCIATES
 CONSULTING ENGINEERS
 LAND SURVEYORS
 330 NORTH CENTRAL AVENUE
 PARIS, ILLINOIS 61944
 PH. (217) 465-5306
 PROFESSIONAL DESIGN FIRM #184-001406

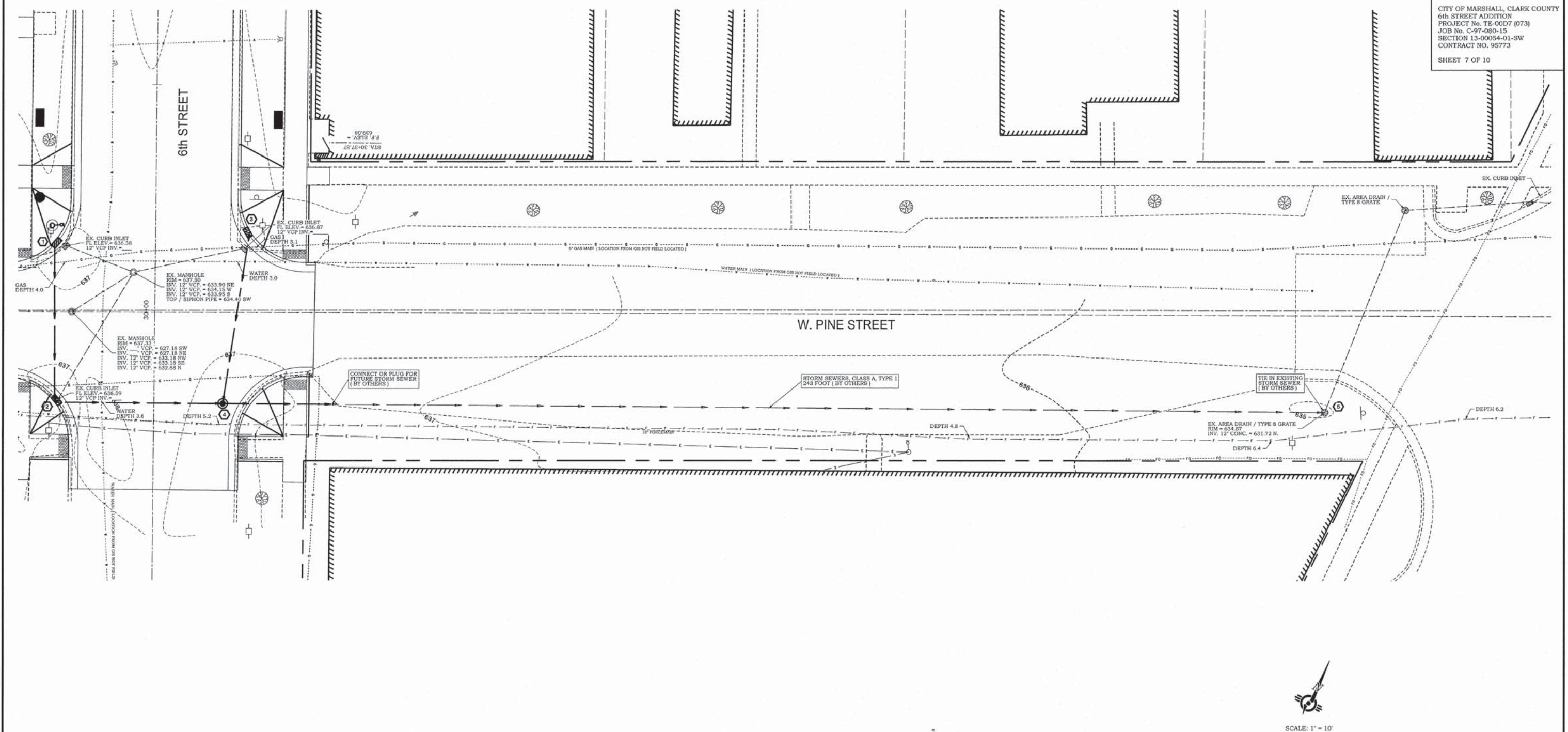
SCALES	
PLAN : HOR. 1"=10'	VERT. 1"=2'
REVISED TLT	APPROVED
DATE 1/22/15	DATE
REVISED TLT	REVISED
DATE 6/4/15	DATE

FRANCIS ASSOC.
 FILE NO.
M-139-5

PLAN AND PROFILE - 6th STREET (WEST SIDE)

6
 OF 10 SHEETS

DOWNTOWN SIDEWALK IMPROVEMENTS - 6th STREET ADDITION
 CITY OF MARSHALL, ILLINOIS, CLARK COUNTY



P:\New Projects\M-139-5 StreetScape\Plan Sheets.dgn

FRANCIS ASSOCIATES
 CONSULTING ENGINEERS
 LAND SURVEYORS
 330 NORTH CENTRAL AVENUE
 PARIS, ILLINOIS 61944
 PH. (217) 465-5306
 PROFESSIONAL DESIGN FIRM #184-001406



SCALES		DRAWN	TLT
PLAN : HOR. 1"=10'		DATE	1/20/15
VERT. 1"=2'		CHECKED	
REVISED		DATE	
DATE		APPROVED	
6/4/15		DATE	
REVISED		REVISION	
DATE		DATE	

FRANCIS ASSOC.
 FILE NO.
M-139-5

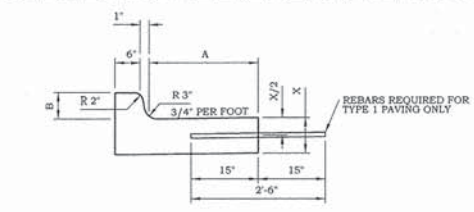
PLAN SHEET - PINE STREET

DOWNTOWN SIDEWALK IMPROVEMENTS - 6th STREET ADDITION
 CITY OF MARSHALL, ILLINOIS, CLARK COUNTY

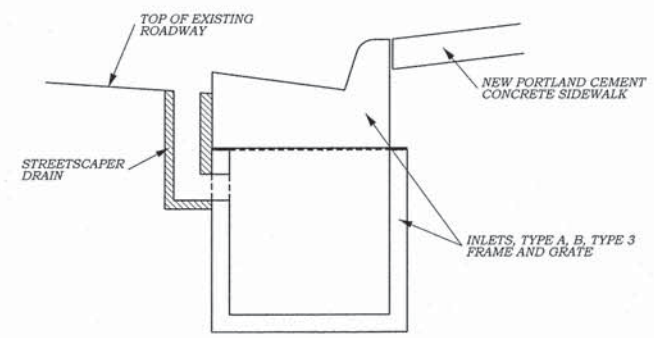
SHEET NO.
7
 OF 10 SHEETS

USE B-6.18 DIMENSIONS FOR CONSTRUCTION, SET X=8"

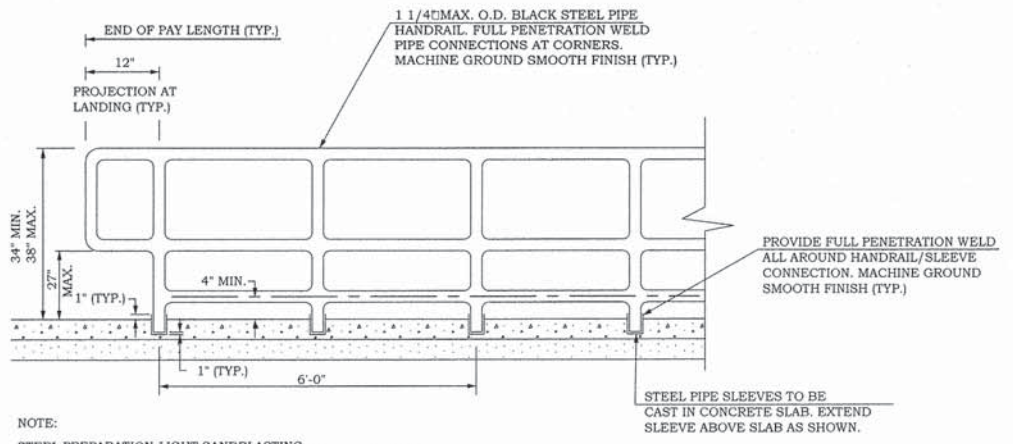
	B-6.12	B-9.12	B-6.18	B-9.18	B-6.24	B-9.24
A	12"	12"	18"	18"	24"	24"
B	6"	9"	6"	9"	6"	9"
X	9"	10"	9"	10"	8"	10"



DETAIL COMBINATION CONCRETE CURB & GUTTER



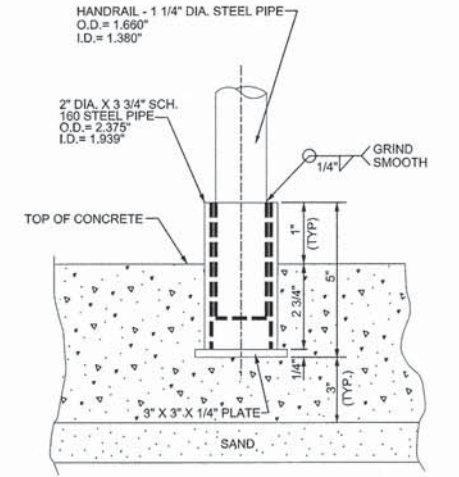
INLETS TYPE A, B DETAIL
 N.T.S.



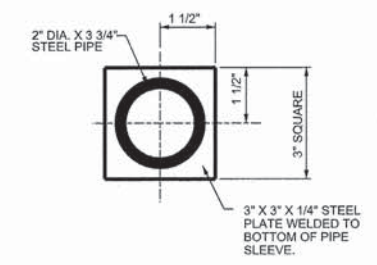
NOTE:
 STEEL PREPARATION: LIGHT SANDBLASTING
 POWDERCOAT: ZINC EPOXY RICH PRIMER 3-4 MILS
 TOP COAT TGIC OR APPROV. EQUAL 3-5 MILS

TOP COAT COLOR TO BE SEMI-GLOSS BLACK.
 SUBMIT PROPOSED COATING SYSTEM TO ENGINEER FOR APPROVAL PRIOR TO COATING.

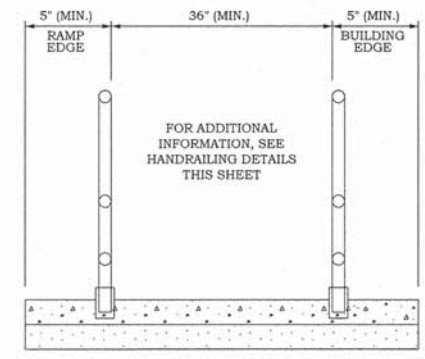
ADA HANDRAILING DETAIL
 N.T.S.



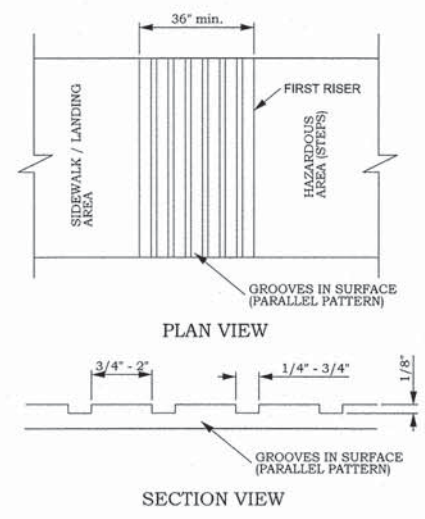
ADA PIPE SLEEVE - SECTION VIEW
 N.T.S.



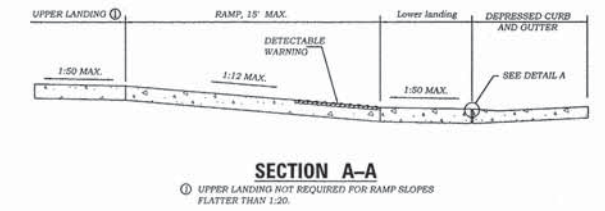
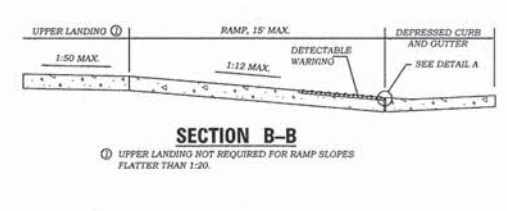
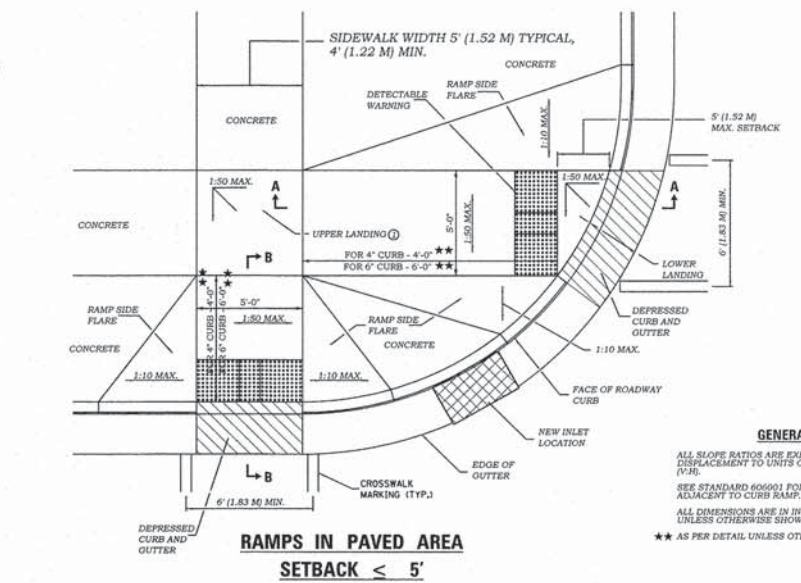
ADA PIPE SLEEVE - PLAN VIEW
 N.T.S.



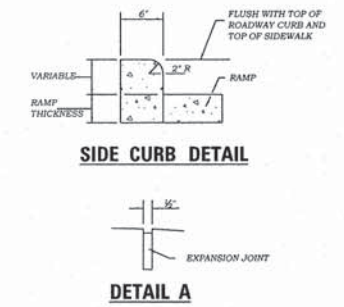
ADA RAIL/HANDRAIL SECTION
 N.T.S.



ADA DETECTABLE WARNING NOT AT CURB RAMP
 N.T.S.



PERPENDICULAR CURB RAMPS FOR SIDEWALKS



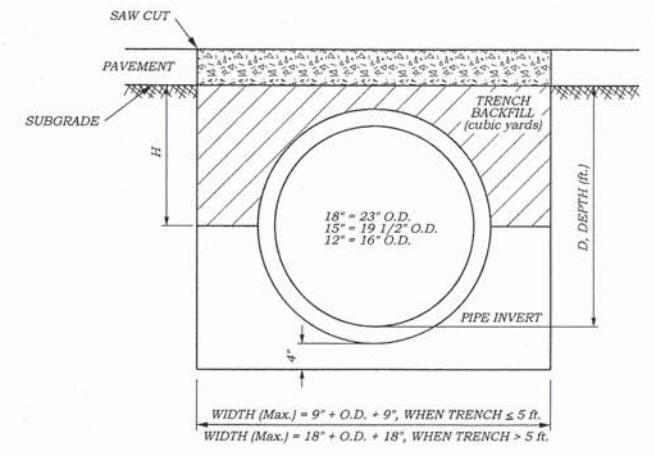
GENERAL NOTES

ALL SLOPE RATIOS ARE EXPRESSED AS UNITS OF VERTICAL DISPLACEMENT TO UNITS OF HORIZONTAL DISPLACEMENT (V:H).

SEE STANDARD 60601 FOR DETAILS OF DEPRESSED CURB ADJACENT TO CURB RAMP.

ALL DIMENSIONS ARE IN INCHES (MILLIMETERS) UNLESS OTHERWISE SHOWN.

** AS PER DETAIL UNLESS OTHERWISE NOTED ON PLAN SHEETS

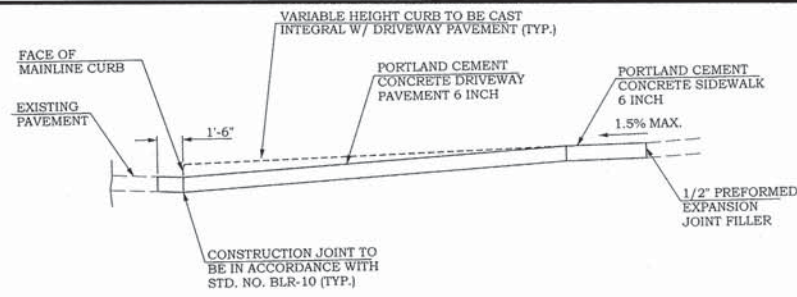


TYPICAL TRENCH DETAIL
 N.T.S.

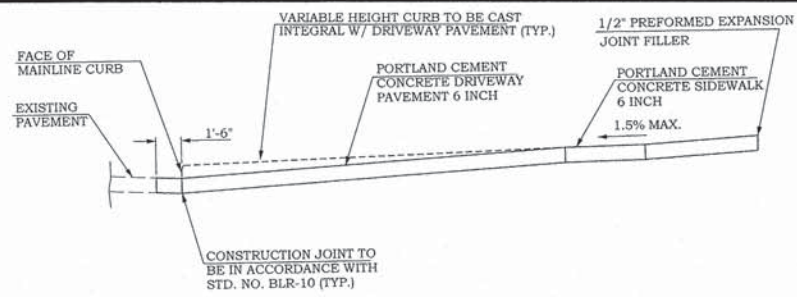


SCALES	DRAWN DATE	FRANCIS ASSOC. FILE NO.
PLAN: N-T-5	CHECKED DATE	
REVISED DATE	APPROVED DATE	
REVISED DATE	REVISED DATE	

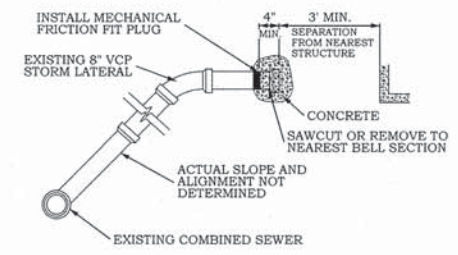
M-139-5



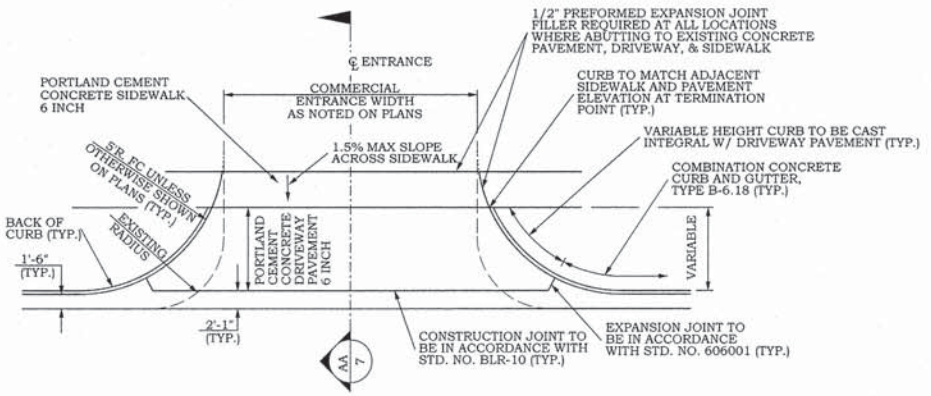
AA COMMERCIAL/ ALLEY ENTRANCES SECTION WITH NEW SIDEWALK
 N.T.S.



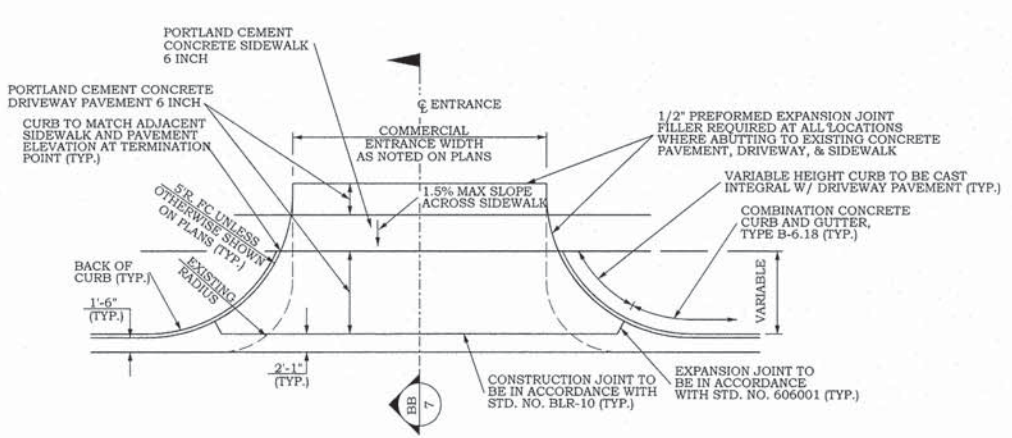
BB COMMERCIAL/ ALLEY ENTRANCES SECTION WITH NEW PAVEMENT BEHIND NEW SIDEWALK
 N.T.S.



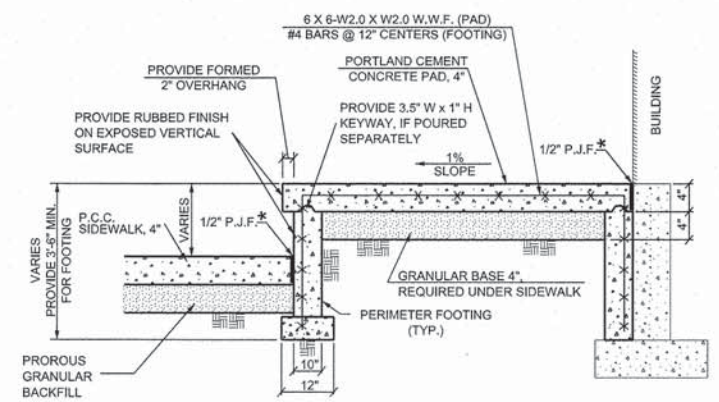
PLUG EXISTING STORM SEWERS
 N.T.S.



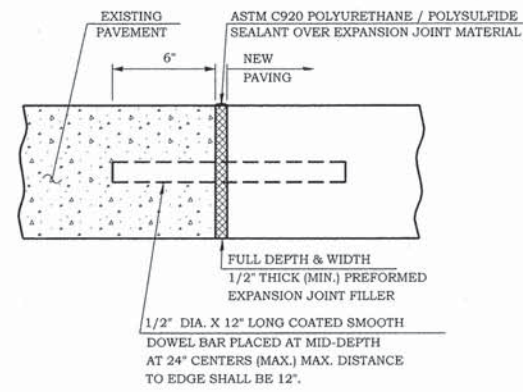
DETAIL OF COMMERCIAL/ ALLEY ENTRANCES WITH NEW SIDEWALK



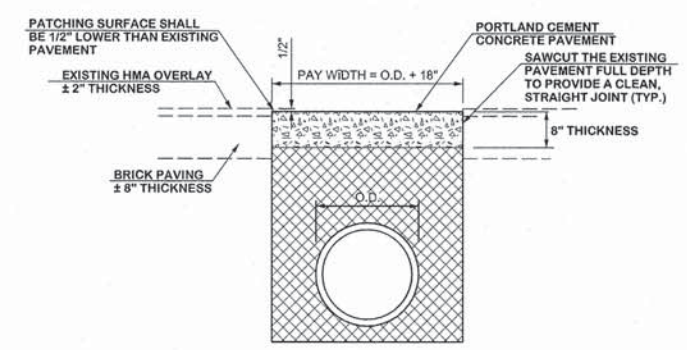
DETAIL OF COMMERCIAL/ ALLEY ENTRANCES WITH NEW PAVEMENT BEHIND NEW SIDEWALK



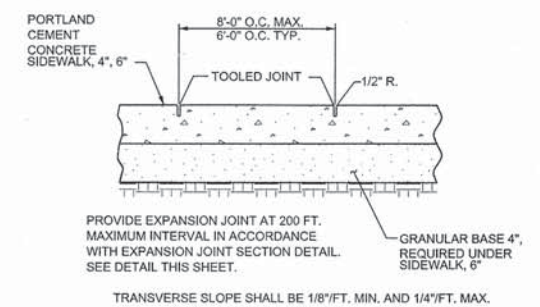
MAIN ENTRANCE CONCRETE RAMP DETAIL
 N.T.S.



SIDEWALK EXPANSION JOINT SECTION
 N.T.S.



CLASS C PATCHES
 N.T.S.

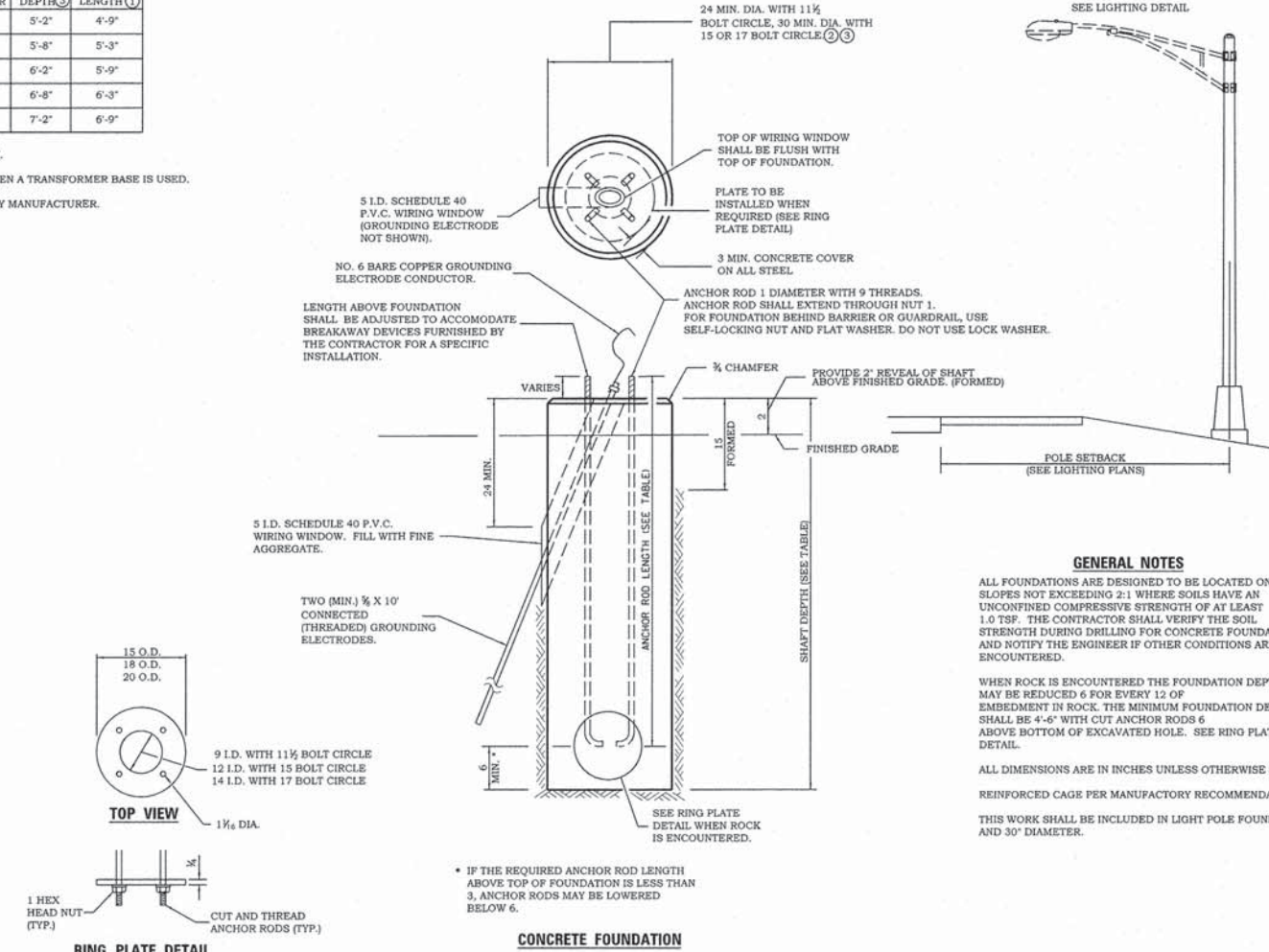


PORTLAND CEMENT CONCRETE SIDEWALK
 N.T.S.

SCALES	DRAWN: TLT
PLAN: N-T-S	DATE: 1/20/15
REVISIONS	CHECKED: _____
DATE: 1/22/15	DATE: _____
REVISIONS	APPROVED: _____
DATE: 6/4/15	DATE: _____

LIGHT POLE MOUNTING HEIGHT	BOLT CIRCLE DIAMETER	CONCRETE FOUNDATION		
		SHAFT DIAMETER	SHAFT DEPTH	ANCHOR ROD LENGTH
≤30'	11 1/2" ③	24	5'-2"	4'-9"
31'-35'	11 1/2" ③	24	5'-8"	5'-3"
36'-40'	15" ②	30	6'-2"	5'-9"
41'-45'	15" ②	30	6'-8"	6'-3"
46'-50'	15" ②	30	7'-2"	6'-9"

- ① LENGTH DOES NOT INCLUDE 4 HOOK.
- ② BOLT CIRCLE DIAM. SHALL BE 17 WHEN A TRANSFORMER BASE IS USED.
- ③ MINIMUM DEPTH OR AS REQUIRED BY MANUFACTURER.



LIGHT POLE FOUNDATION
 N.T.S.

GENERAL NOTES

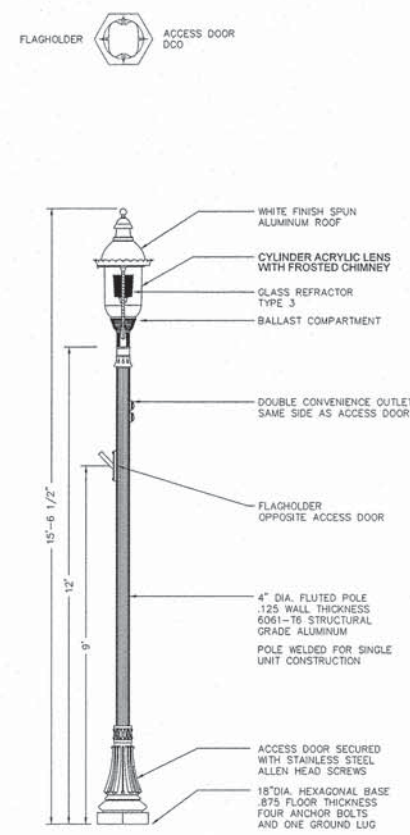
ALL FOUNDATIONS ARE DESIGNED TO BE LOCATED ON SLOPES NOT EXCEEDING 2:1 WHERE SOILS HAVE AN UNCONFINED COMPRESSIVE STRENGTH OF AT LEAST 1.0 TSP. THE CONTRACTOR SHALL VERIFY THE SOIL STRENGTH DURING DRILLING FOR CONCRETE FOUNDATIONS AND NOTIFY THE ENGINEER IF OTHER CONDITIONS ARE ENCOUNTERED.

WHEN ROCK IS ENCOUNTERED THE FOUNDATION DEPTH MAY BE REDUCED 6 FOR EVERY 12 OF EMBEDMENT IN ROCK. THE MINIMUM FOUNDATION DEPTH SHALL BE 4'-6" WITH CUT ANCHOR RODS 6 ABOVE BOTTOM OF EXCAVATED HOLE. SEE RING PLATE DETAIL.

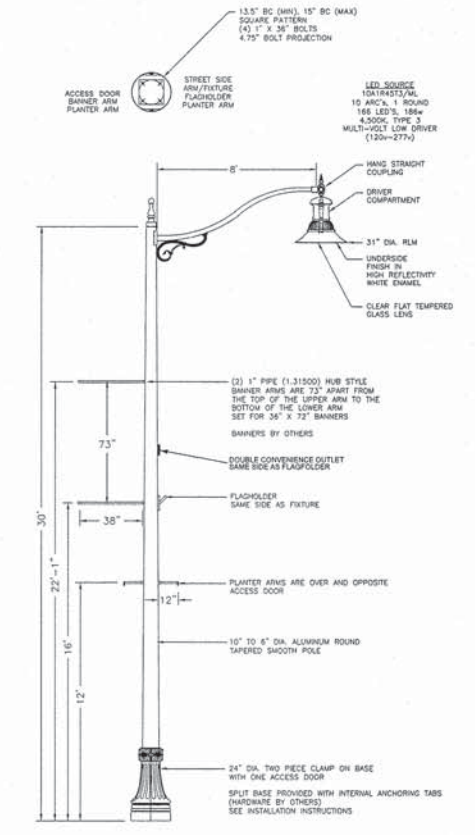
ALL DIMENSIONS ARE IN INCHES UNLESS OTHERWISE SHOWN.

REINFORCED CAGE PER MANUFACTORY RECOMMENDATIONS.

THIS WORK SHALL BE INCLUDED IN LIGHT POLE FOUNDATION, 24" AND 30" DIAMETER.



STREET LIGHT DETAIL
 DECORATIVE LIGHT TYPE A
 STERNBERG MODEL: 6590SRLED-4A1R45TS SHOWN
 N.T.S.



STREET LIGHT DETAIL
 DECORATIVE LIGHT TYPE B
 STERNBERG MODEL: 1914LEDFG-10A1R45TS SHOWN
 N.T.S.