

STATE OF ILLINOIS
DEPARTMENT OF TRANSPORTATION

F.A.P. RTE.	SECTION	COUNTY	TOTAL SHEETS	SHEET NO.
418330	(11)CJS & (15)CJS	KANKAKEE	11	1
		ILLINOIS	CONTRACT NO. 66L04	

INDEX OF SHEETS

1	COVER SHEET
2	GENERAL NOTES
3	SUMMARY OF QUANTITIES
4-7	TYPICAL SECTIONS
8	LINE DIAGRAM
9	SCHEDULE OF QUANTITIES
10-11	DETAILS

LIST OF ILLINOIS DOT HIGHWAY STANDARDS

000001-07	STANDARD SYMBOLS, ABBREVIATIONS AND PATTERNS
001006	DECIMAL OF AN INCH AND OF A FOOT
701001-02	OFF-ROAD OPERATIONS 2L, 2W, MORE THAN 15' (4.5 m) AWAY
701006-05	OFF-ROAD OPERATIONS 2L, 2W, 15' (4.5 m) TO 24" (600 mm) FROM PAVEMENT EDGE
701301-04	LANE CLOSURE, 2L, 2W, SHORT TIME OPERATIONS
701306-04	LANE CLOSURE, 2L, 2W, SLOW MOVING OPERATIONS DAY ONLY, FOR SPEEDS ≥ 45 MPH
701311-03	LANE CLOSURE, 2L, 2W, MOVING OPERATIONS - DAY ONLY
701501-06	URBAN LANE CLOSURE, 2L, 2W, UNDIVIDED
701502-09	URBAN LANE CLOSURE 2L, 2W, WITH BIDIRECTIONAL LEFT TURN LANE
701901-08	TRAFFIC CONTROL DEVICES

**PROPOSED
HIGHWAY PLANS**
FAP ROUTE 41 (IL 17) & FAP
ROUTE 330 (US 45/52)
PROJECT STP-NHPP-45UR (098)
SECTION: (11)CJS & (15)CJS
CRACK & JOINT SEALING
KANKAKEE COUNTY
C-93-087-20

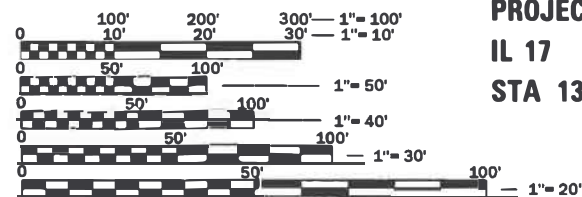


FUNCTIONAL CLASSIFICATION
IL 17 MINOR ARTERIAL
2019 ADT=6800
PV=87.1% SU=6.9% MU=6.9%
US 45/52 OTHER ARTERIAL
2019 ADT=21100
PV=94.3% SU=4.2% MU=1.5%

STATE OF ILLINOIS
DEPARTMENT OF TRANSPORTATION

SUBMITTED May 5th 2020
[Signature] REGIONAL ENGINEER
June 26, 2020
[Signature] ENGINEER OF DESIGN AND ENVIRONMENT
June 26, 2020
[Signature] DIRECTOR OF HIGHWAYS PROJECT IMPLEMENTATION

**PRINTED BY THE AUTHORITY
OF THE STATE OF ILLINOIS**



**PROJECT BEGINS
IL 17
STA 1310 + 72**

FULL SIZE PLANS HAVE BEEN PREPARED USING STANDARD ENGINEERING SCALES. REDUCED SIZED PLANS WILL NOT CONFORM TO STANDARD SCALES. IN MAKING MEASUREMENTS ON REDUCED PLANS, THE ABOVE SCALES MAY BE USED.

J.U.L.I.E.
JOINT UTILITY LOCATION INFORMATION FOR EXCAVATION
1-800-892-0123
OR 811

PROJECT ENGINEER: JACOB OYIER, PE
UNIT CHIEF: ARLENE OTERO-FEBUS
DISTRICT 3 NO. (815) 434-6131
CONTRACT NO. 66L04

**CULVERT
SN 046-2557**

**CULVERT
SN 046-2558**

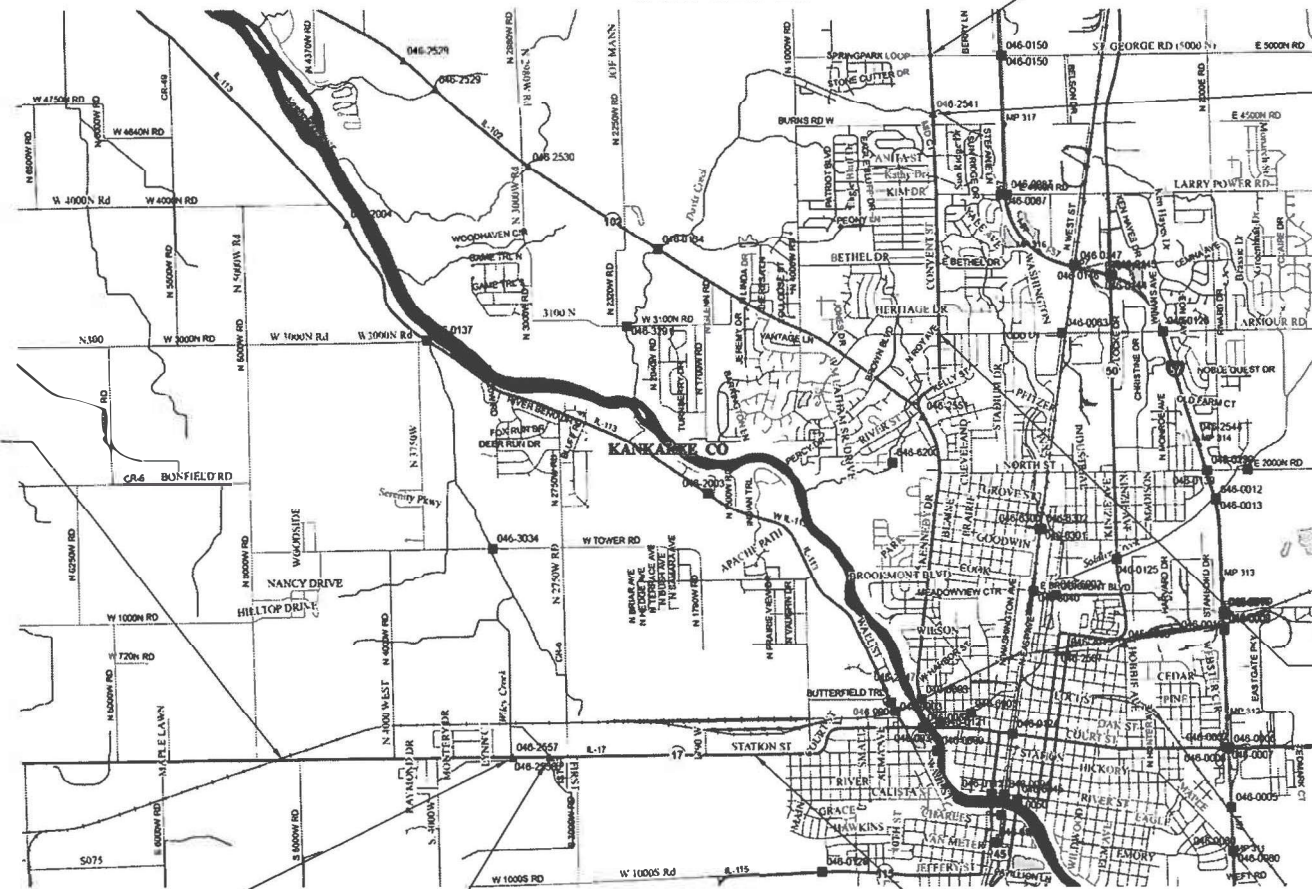
GROSS LENGTH = 28107 FT. = 5.32 MILE
NET LENGTH = 28107 FT. = 5.32 MILE

**PROJECT ENDS
IL 17
STA 1489 + 79**

**PROJECT BEGINS
US 45/52
STA 225 + 75**

**CULVERT
SN 046-2541**

**PROJECT ENDS
US 45/52
STA 123 + 75**



GENERAL NOTES

THE INTENT OF THIS PROJECT IS TO ROUT AND SEAL WORKING TRANSVERSE CRACKS AND PRIMARY LONGITUDINAL CRACKS GREATER THAN 1/4" IN WIDTH. SECONDARY CRACKS GREATER THAN 1/4" IN WIDTH SHALL BE CLEANED AND SEALED.

THE CONTRACTOR SHALL NOT DISTURB THE EXISTING PAVEMENT MARKING OR RAISED REFLECTIVE PAVEMENT MARKERS. THE CONTRACTOR SHALL REPLACE, AT NO ADDITIONAL COST TO THE DEPARTMENT, ANY PAVEMENT MARKING OR RAISED REFLECTIVE PAVEMENT MARKERS DAMAGED BY HIS OPERATION.

THE ENGINEER SHALL DETERMINE WHETHER SECTIONS OF CRACKS SEALING SHOULD BE OMITTED IN ORDER TO AVOID DAMAGING THE PAVEMENT MARKING IN THOSE AREAS.

PLAN DIMENSIONS AND DETAIL RELATIVE TO THE EXISTING PLANS ARE SUBJECT TO ROUTINE VARIATIONS. THE CONTRACTOR SHALL FIELD VERIFY EXISTING DIMENSIONS AND DETAILS AFFECTING NEW CONSTRUCTION OF ORDERING OF MATERIALS. SUCH VARIATIONS SHALL NOT BE CAUSE FOR ADDITIONAL COMPENSATION FOR A CHANGE IN THE SCOPE OF THE WORK, HOWEVER, THE CONTRACTOR WILL BE PAID FOR THE QUANTITY FURNISHED BASED UPON THE UNIT BID PRICE.

ALL PCC BRIDGE DECKS AND PAVEMENT SHALL BE OMITTED. BRIDGE DECKS WITH HMA OVERLAYS ARE TO BE SEALED ONLY (NO ROUTING).

THE FOLLOWING RATES OF APPLICATION HAVE BEEN USED IN CALCULATING PLAN QUANTITIES:

CRACK FILLING	0.35	POUND/FOOT
---------------	------	------------

COMMITMENTS

STATE OF ILLINOIS
DEPARTMENT OF TRANSPORTATION
DISTRICT THREE
AS BUILT INFORMATION

SUPERVISING CONSTRUCTION FIELD ENGINEER

RESIDENT ENGINEER / TECHNICIAN

START & END DATES
OF CONSTRUCTION:

INSPECTORS:

STATE OF ILLINOIS
DEPARTMENT OF TRANSPORTATION
DISTRICT THREE

PREPARED BY: _____
DISTRICT STUDIES & PLANS ENGINEER

DATE: _____

EXAMINED BY: _____
DISTRICT CONSTRUCTION ENGINEER

DISTRICT MATERIALS ENGINEER

DISTRICT OPERATIONS ENGINEER

MODEL: Default
FILE: Model: P:\upload\room.dat\illinois.gov\PIWDOT\Documents\DOT_Offices\District_3\Projects\0366L04\CADD\data\0366L04-shr-cover.dgn

USER NAME = NOLASCOCJ	DESIGNED -	REVISED -
	DRAWN -	REVISED -
PLOT SCALE = 100.0000 ' / in.	CHECKED -	REVISED -
PLOT DATE = 5/1/2020	DATE -	REVISED -

**STATE OF ILLINOIS
DEPARTMENT OF TRANSPORTATION**

GENERAL NOTES

SCALE: SHEET 1 OF 1 SHEETS STA. TO STA.

F.A.P. RTE.	SECTION	COUNTY	TOTAL SHEETS	SHEET NO.
416330	(11)CJS & (15)CIS	KANKAKEE	11	2
CONTRACT NO. 66L04				
ILLINOIS FED. AID PROJECT				

MODEL: Default
 FILE: \\nls-px1\pub\room\dat\illinois.gov\PWIDOT\Documents\DOT_Offices\District_3\Projects\0366L04\CADD\data\0366L04-sh-crate\ill.dgn

CODE NO.	ITEM	UNIT	TOTAL QUANTITY	CONSTRUCTION CODE			
				80% FED 20% STATE	STP-RUR FUNDING IL 17	STP-URB FUNDING IL 17	NHPP FUNDING US 45/52
					ROADWAY 0005	ROADWAY 0005	ROADWAY 0005
					RURAL	URBAN	URBAN
45100100	CRACK ROUTING (PAVEMENT)	FOOT	123454	10150	63346	49958	
45100200	CRACK FILLING	POUND	43209	3552	22172	17485	
67100100	MOBILIZATION	L SUM	1	0.08	0.51	0.41	
70102620	TRAFFIC CONTROL AND PROTECTION, STANDARD 701501	L SUM	1		0.56	0.44	
70102622	TRAFFIC CONTROL AND PROTECTION, STANDARD 701502	L SUM	1		0.56	0.44	
Z0030850	TEMPORARY INFORMATION SIGNING	SQ FT	84	21	21	42	

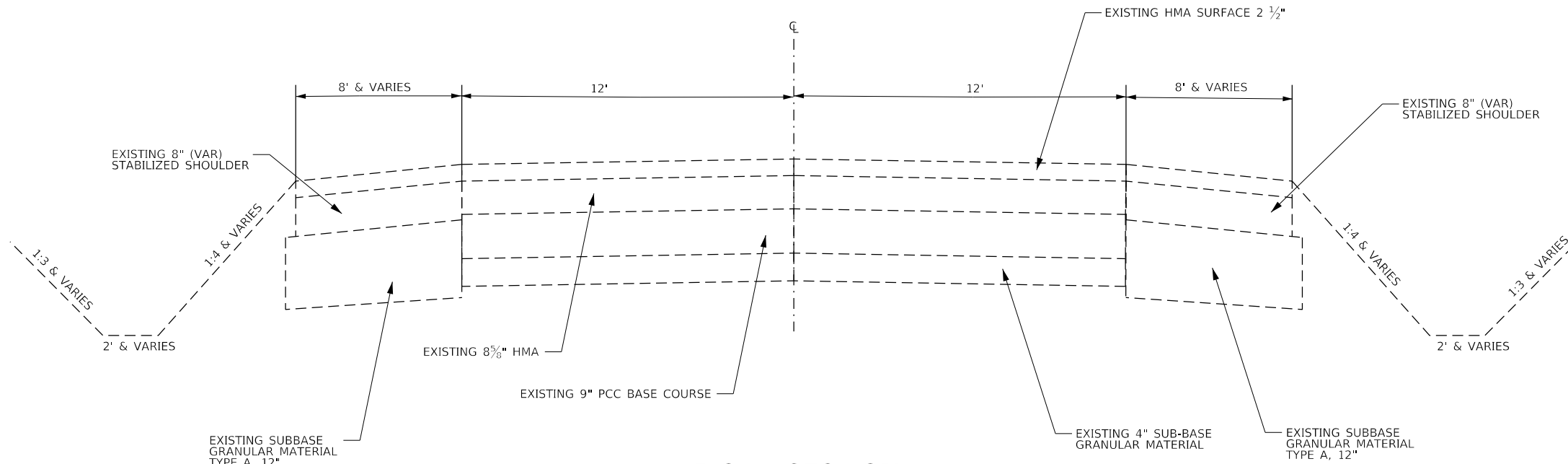
USER NAME = NOLASCOCJ	DESIGNED -	REVISED -
	DRAWN -	REVISED -
PLOT SCALE = 100.0000' / in.	CHECKED -	REVISED -
PLOT DATE = 5/1/2020	DATE -	REVISED -

**STATE OF ILLINOIS
DEPARTMENT OF TRANSPORTATION**

SUMMARY OF QUANTITIES

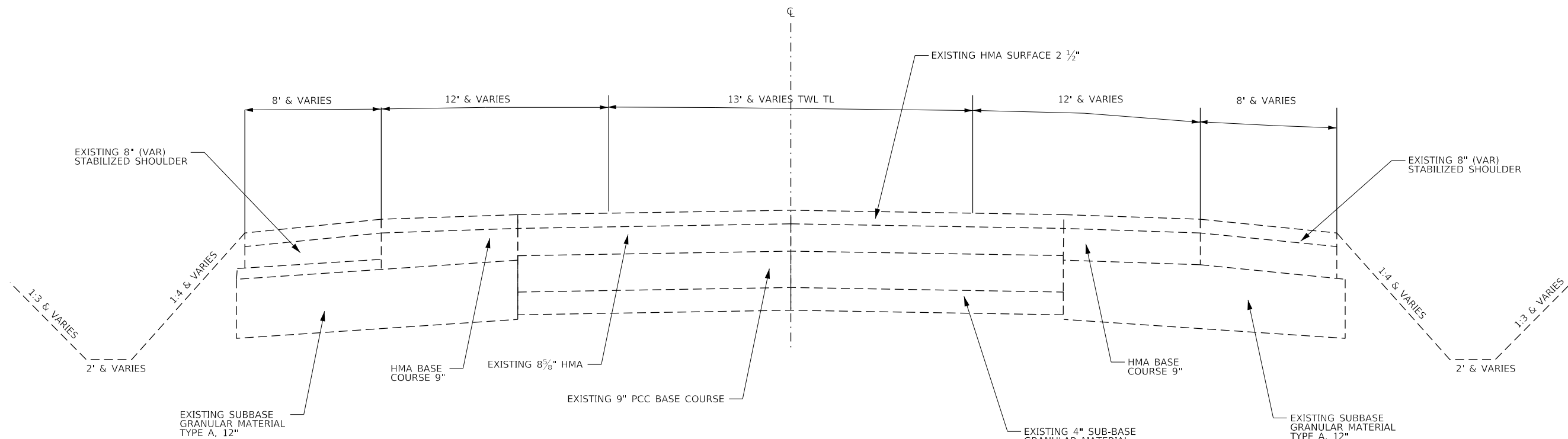
SCALE: SHEET 1 OF 1 SHEETS STA. TO STA.

F.A.P. RTE.	SECTION	COUNTY	TOTAL SHEETS	SHEET NO.
416330	(11)CJS & (15)CJS	KANKAKEE	11	3
CONTRACT NO. 66L04				
ILLINOIS FED. AID PROJECT				



TYPICAL SECTION 1

STA 1310+72 TO STA 1312+50
 PROPOSED CRACK SEALING - SEE DETAIL



TYPICAL SECTION 2

STA 1312+50 TO STA 1347+00
 STA 1359+00 TO STA 1369+00
 PROPOSED CRACK SEALING - SEE DETAIL

MODEL: Default
 FILE: Model2_PlanSubbaseRoom.dwg
 PROJECT: I:\Projects\13666\13666.dwg
 OFFICE: I:\Projects\13666\13666.dwg
 DATE: 5/1/2020

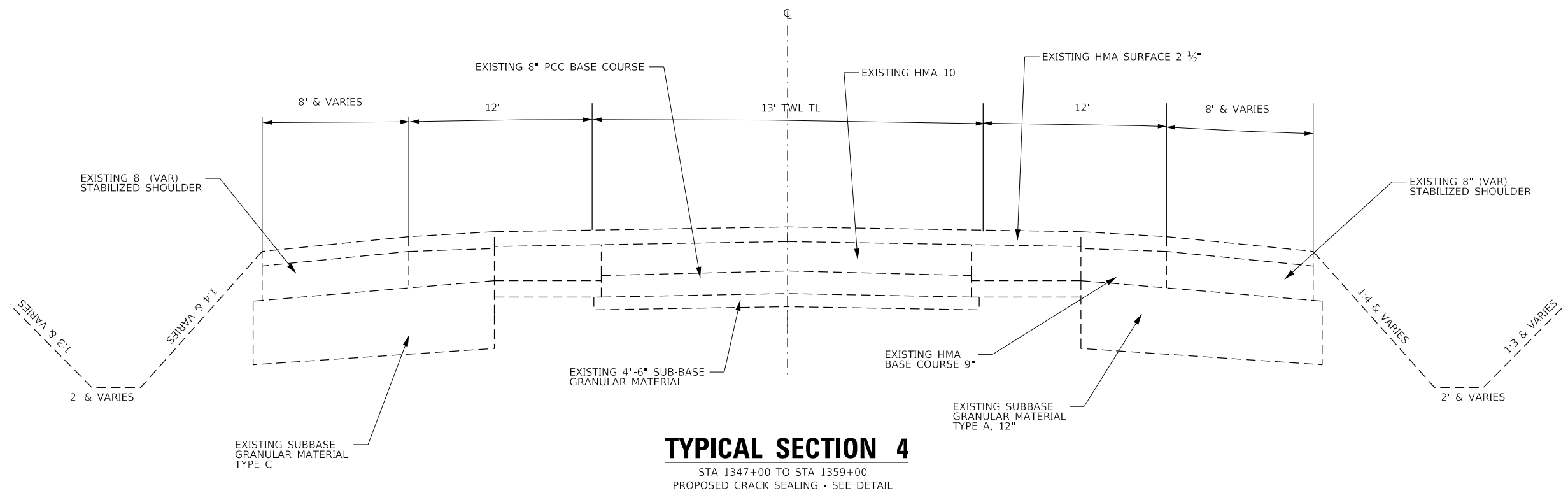
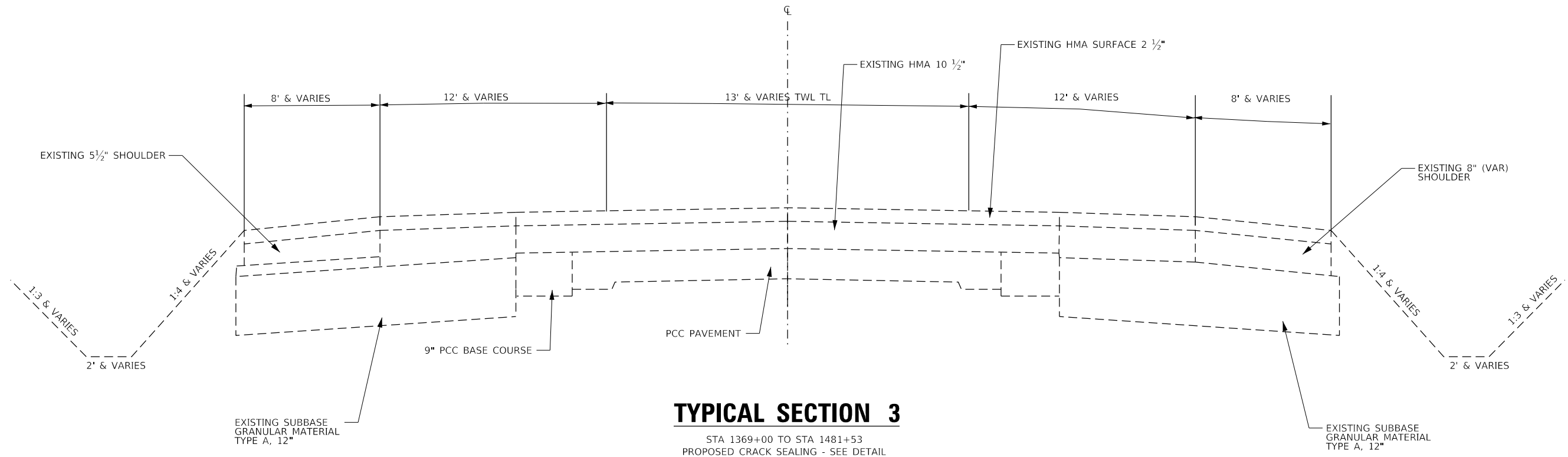
USER NAME = NOLASCOCJ	DESIGNED -	REVISED -
	DRAWN -	REVISED -
PLOT SCALE = 100.0000' / in.	CHECKED -	REVISED -
PLOT DATE = 5/1/2020	DATE -	REVISED -

**STATE OF ILLINOIS
 DEPARTMENT OF TRANSPORTATION**

TYPICAL SECTIONS IL 17

SCALE: SHEET 1 OF 1 SHEETS STA. TO STA.

F.A.P. RTE.	SECTION	COUNTY	TOTAL SHEETS	SHEET NO.
416330	(11)CJS & (15)CIS	KANKAKEE	11	4
CONTRACT NO. 66L04				
ILLINOIS FED. AID PROJECT				



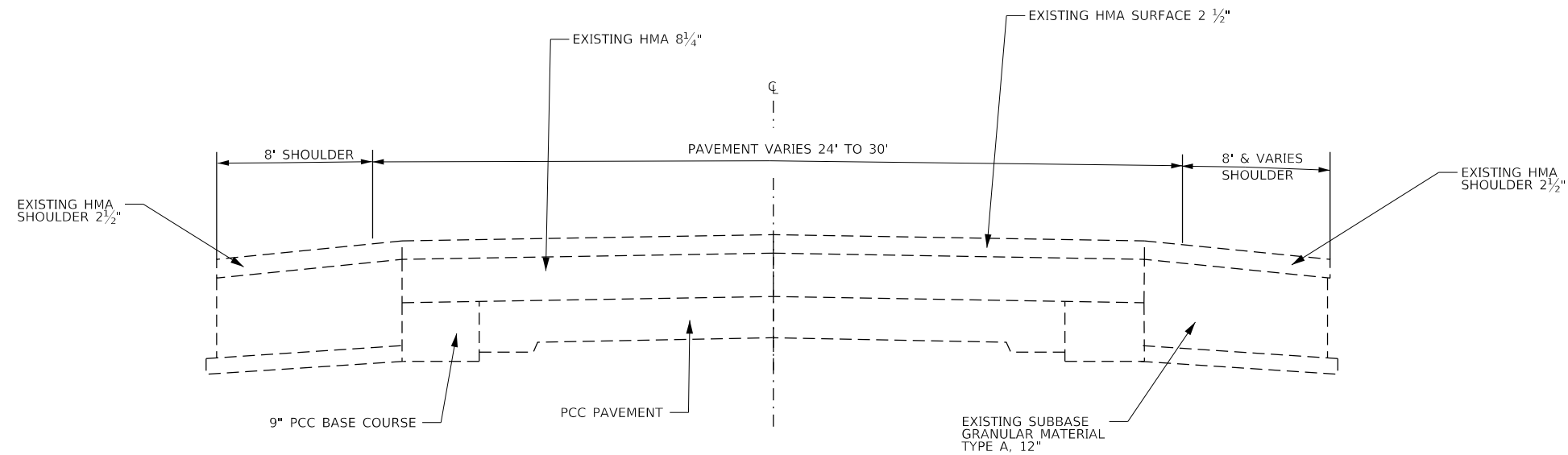
MODEL: Default
 FILE: h:\mhc\p\pub\harcam\dat\illinois\pwr\DOT\Documents\DOT - Offices\District 3\projects\1366\04\CADD\data\1366_04_14-sh-crack-ill.dgn

USER NAME = NOLASCOCJ	DESIGNED -	REVISED -
PLOT SCALE = 100,0000' / in.	DRAWN -	REVISED -
PLOT DATE = 5/1/2020	CHECKED -	REVISED -
	DATE -	REVISED -

STATE OF ILLINOIS
DEPARTMENT OF TRANSPORTATION

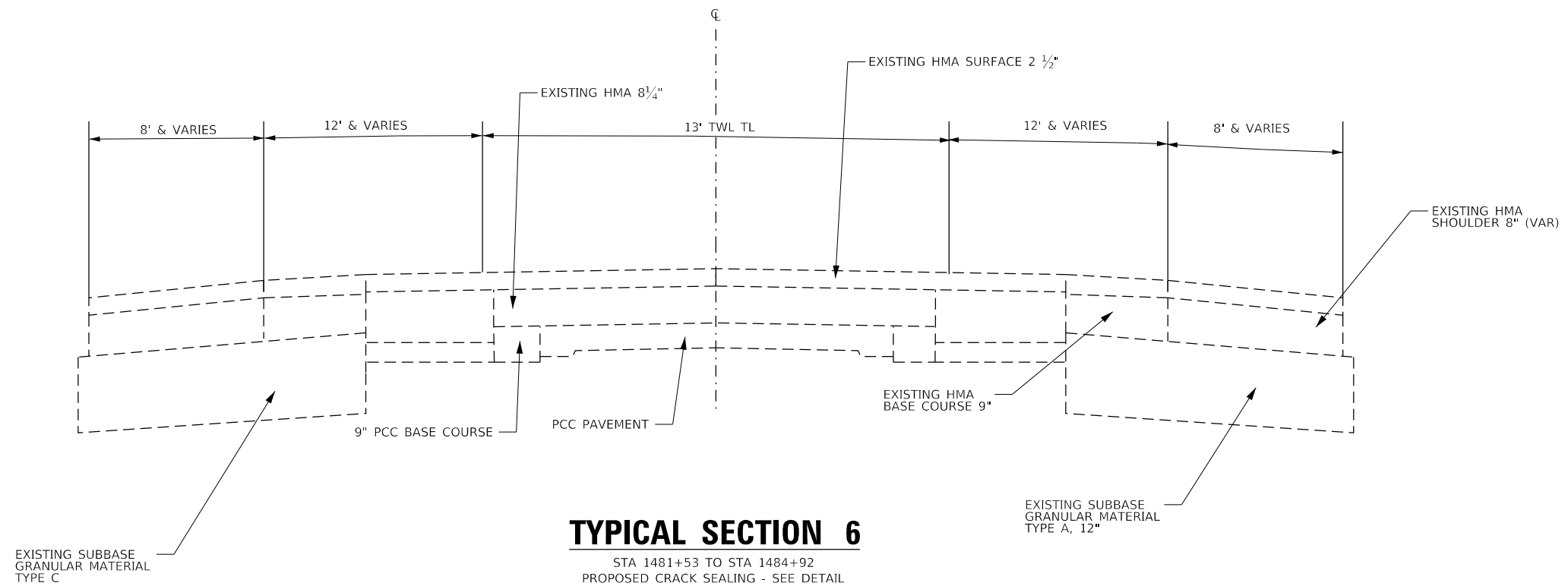
TYPICAL SECTIONS IL 17
 SCALE: SHEET 1 OF 1 SHEETS STA. TO STA.

F.A.P. RTE.	SECTION	COUNTY	TOTAL SHEETS	SHEET NO.
416330	(11)CJS & (15)CIS	KANKAKEE	11	5
CONTRACT NO. 66L04				
ILLINOIS FED. AID PROJECT				



TYPICAL SECTION 5

STA 1484+92 TO STA 1489+79
PROPOSED CRACK SEALING - SEE DETAIL



TYPICAL SECTION 6

STA 1481+53 TO STA 1484+92
PROPOSED CRACK SEALING - SEE DETAIL

MODEL: Default
FILE: h:\mhc\p\pub\room\dat\illinois.gov\PWIDOT\Documents\DOT_Offices\District_3\Projects\0366\04\CADD\04\0366_04_4-sh-crack-seal.dgn

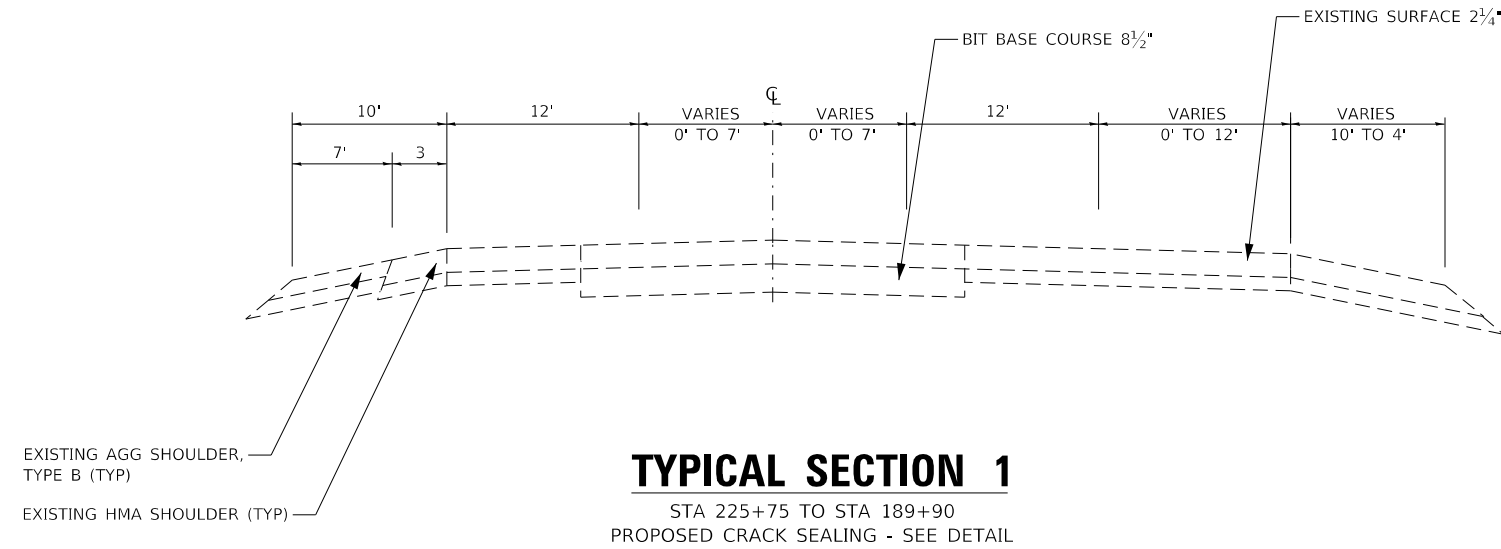
USER NAME = NOLASCOCJ	DESIGNED -	REVISED -
	DRAWN -	REVISED -
PLOT SCALE = 100.0000' / in.	CHECKED -	REVISED -
PLOT DATE = 5/1/2020	DATE -	REVISED -

**STATE OF ILLINOIS
DEPARTMENT OF TRANSPORTATION**

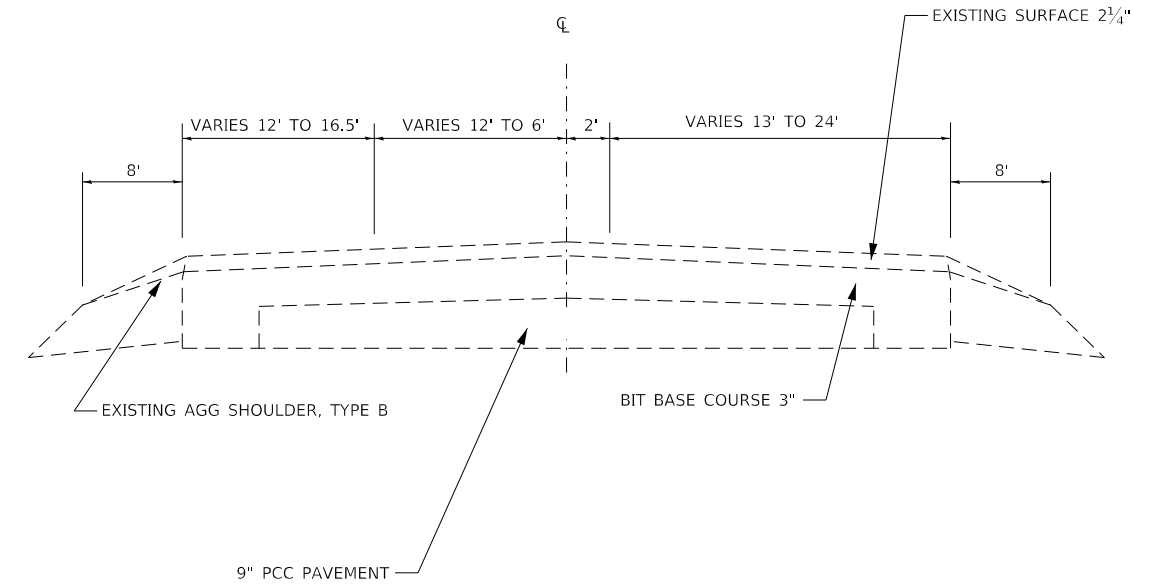
TYPICAL SECTIONS IL 17

SCALE: SHEET 1 OF 1 SHEETS STA. TO STA.

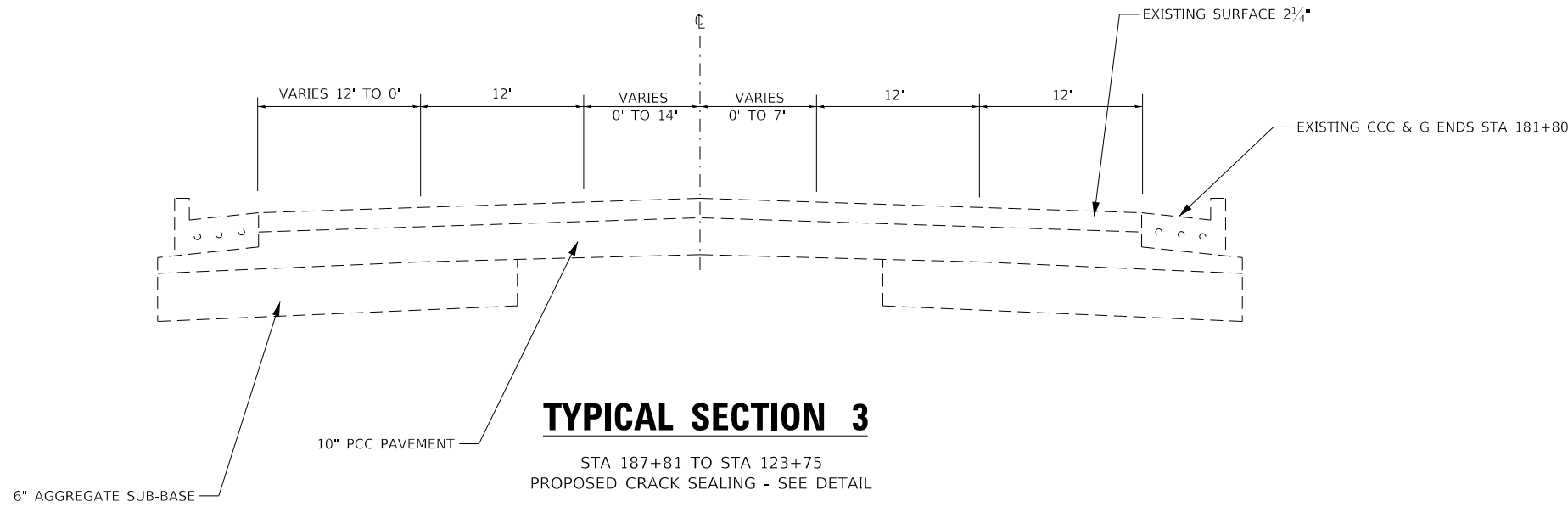
F.A.P. RTE.	SECTION	COUNTY	TOTAL SHEETS	SHEET NO.
41/330		KANKAKEE	11	6
CONTRACT NO. 66L04				
ILLINOIS FED. AID PROJECT				



TYPICAL SECTION 1
 STA 225+75 TO STA 189+90
 PROPOSED CRACK SEALING - SEE DETAIL



TYPICAL SECTION 2
 STA 189+90 TO STA 187+81
 PROPOSED CRACK SEALING - SEE DETAIL



TYPICAL SECTION 3
 STA 187+81 TO STA 123+75
 PROPOSED CRACK SEALING - SEE DETAIL

MODEL: Default
 FILE: \\nlsr01\pub\lanscom\dat\illinois\pwr\pww\DOT\Documents\DOT_Offices\District_3\Projects\0366\04\CADD\04\366_04_4-sh-crack.dgn

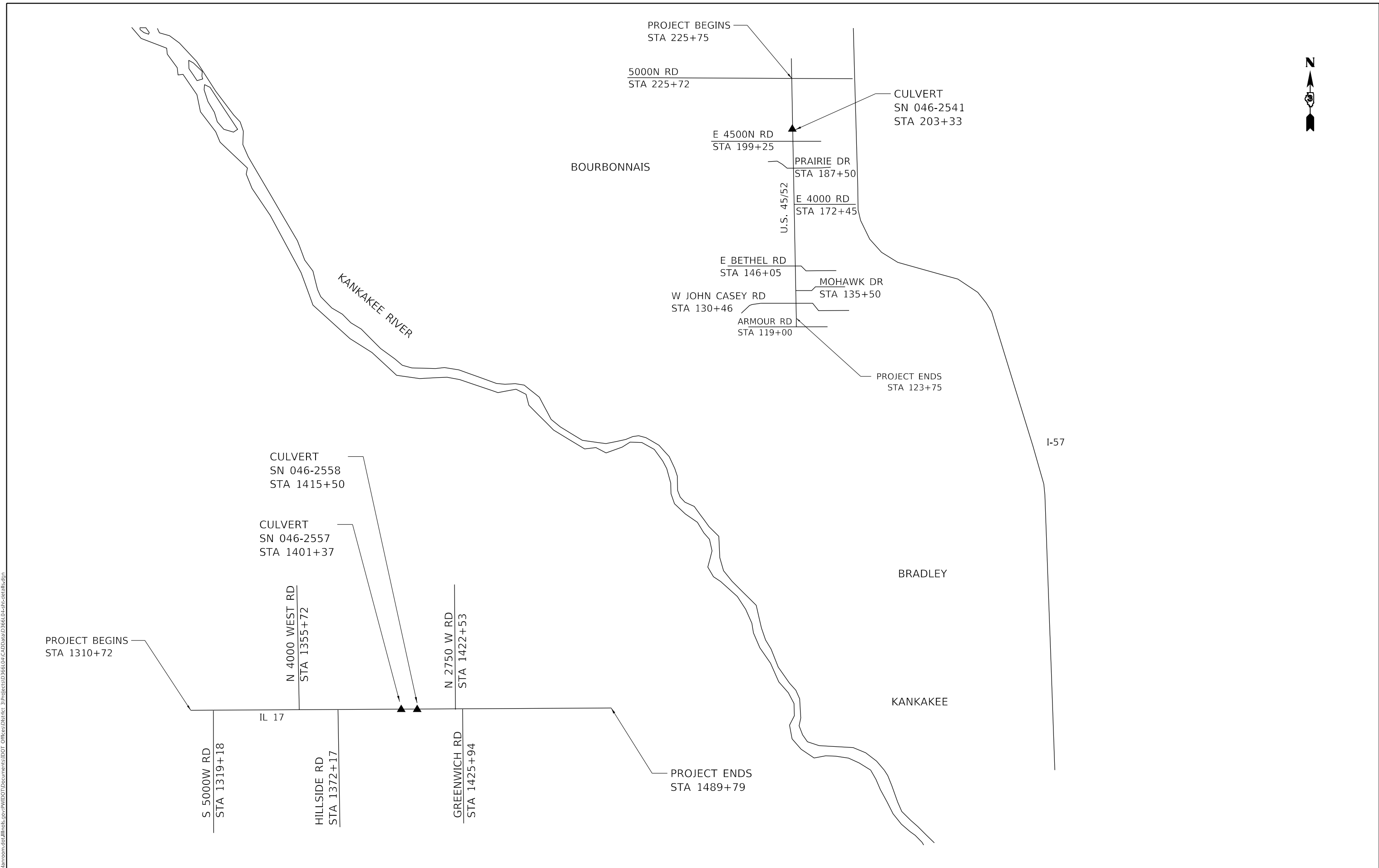
USER NAME = NOLASCOCJ	DESIGNED -	REVISED -
PLOT SCALE = 100.0000' / in.	DRAWN -	REVISED -
PLOT DATE = 5/3/2020	CHECKED -	REVISED -
	DATE -	REVISED -

**STATE OF ILLINOIS
 DEPARTMENT OF TRANSPORTATION**

TYPICAL SECTIONS US 52/45

SCALE: SHEET 1 OF 1 SHEETS STA. TO STA.

F.A.P. RTE.	SECTION	COUNTY	TOTAL SHEETS	SHEET NO.
41/330		KANKAKEE	11	7
CONTRACT NO. 66L04				
ILLINOIS FED. AID PROJECT				



MODEL: Default
 FILE: h:\mfc_2020\pub\planroom\dat\illinois.gov\PWIDOT\Documents\DOT_Offices\District_3\Projects\0366\04\CADD\data\0366\04-shc-detailed.dgn

USER NAME = NOLASCOCJ	DESIGNED -	REVISED -
	DRAWN -	REVISED -
PLOT SCALE = 100,0000' / in.	CHECKED -	REVISED -
PLOT DATE = 5/1/2020	DATE -	REVISED -

STATE OF ILLINOIS
DEPARTMENT OF TRANSPORTATION

LINE DIAGRAM			
SCALE:	SHEET 1	OF 1	SHEETS
	STA.	TO STA.	

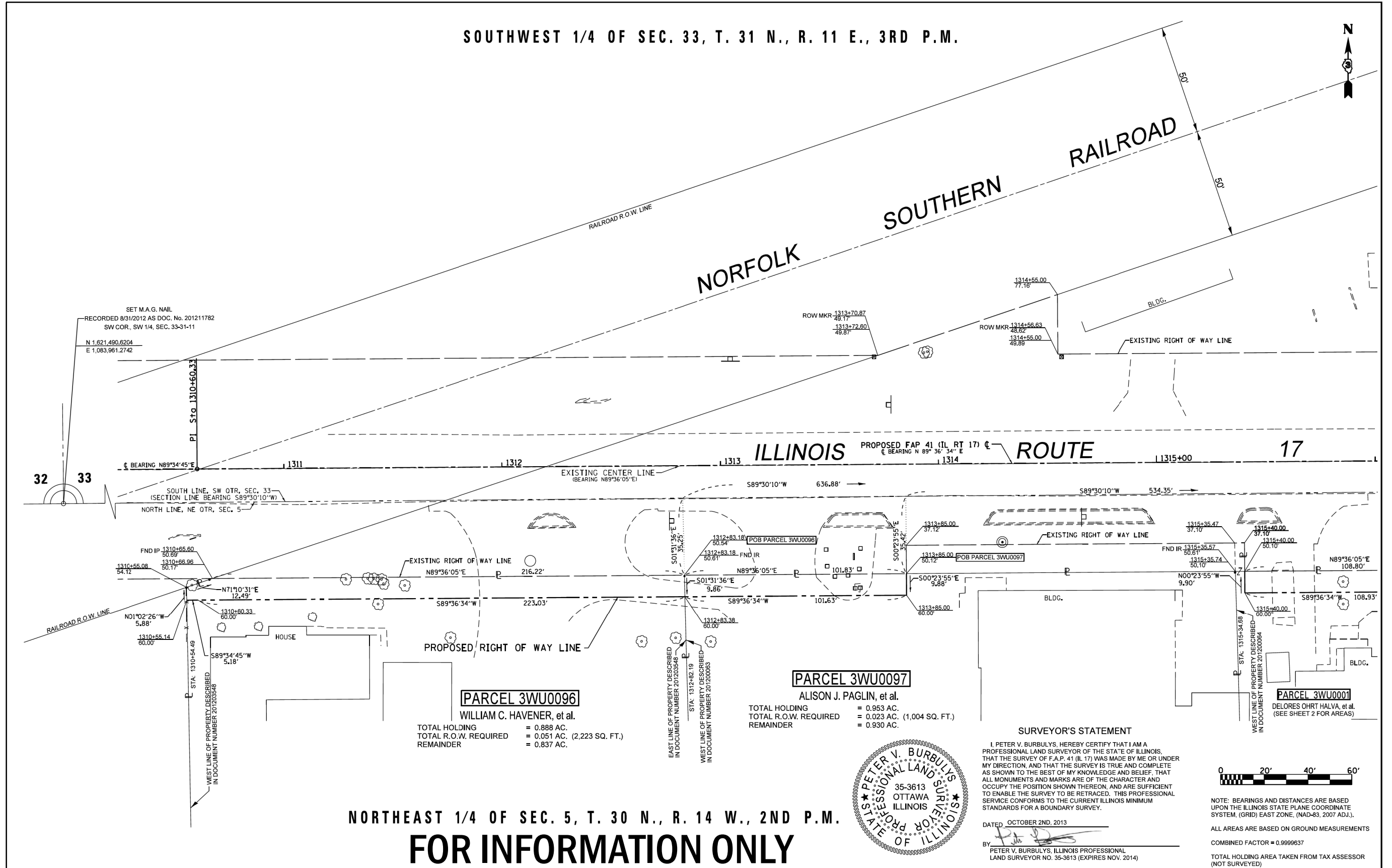
F.A.P. RTE.	SECTION	COUNTY	TOTAL SHEETS	SHEET NO.
416330	(11)CJS & (15)CIS	KANKAKEE	11	8
CONTRACT NO. 66L04				
ILLINOIS FED. AID PROJECT				

CRACK ROUTING AND SEALING SCHEDULE					
LOCATION	DETAIL	LONGITUDINAL CRACK ROUTING (PAVEMENT)	TRANSVERSE CRACK ROUTING (PAVEMENT)	LONGITUDINAL CRACK FILLING	TRANSVERSE CRACK FILLING
		FOOT	FOOT	POUND	POUND
IL 17					
STA 1310+72 TO STA 1355+72	FROM NR RR TO N 4000 RD	13,997	1452	4,899	508
STA 1355+72 TO STA 1422+53	FROM N 4000 RD TO N 2750 W RD	23,440	1,536	8,204	538
STA 1422+53 TO STA 1489+79	FROM N2750 W RD TO END OF PROJECT	29,375	3,696	10,281	1,294
US 45/52					
STA 225+75 TO STA 123+75	FROM INDIAN OAKS RD (5000 N) TO ARMOUR RD	42,218	7,740	14,776	2,709
SUB-TOTAL		109,030	14,424	38,160	5,049
TOTAL		123,454		43,209	

MODEL: Default
 FILE: \\nolascoc\pub\lhamrson\data\illinois\pwr\DOT\Documents\DOT_Offices\District_3\Projects\ID366\04\CADD\data\ID366\04-sh-crack.tbl.dgn

USER NAME = NOLASCOCJ	DESIGNED -	REVISED -	STATE OF ILLINOIS DEPARTMENT OF TRANSPORTATION	SCHEDULES			F.A.P. RTE.	SECTION	COUNTY	TOTAL SHEETS	SHEET NO.
DRAWN -	REVISED -	416330					(11)CJS & (15)CJS	KANKAKEE	11	9	
PLOT SCALE = 100.0000' / in.	CHECKED -	REVISED -		SCALE: SHEET 1 OF 1 SHEETS STA. TO STA.			CONTRACT NO. 66L04		ILLINOIS FED. AID PROJECT		
PLOT DATE = 5/1/2020	DATE -	REVISED -									

SOUTHWEST 1/4 OF SEC. 33, T. 31 N., R. 11 E., 3RD P.M.



NORTHEAST 1/4 OF SEC. 5, T. 30 N., R. 14 W., 2ND P.M.

FOR INFORMATION ONLY

PARCEL 3WU0097

ALISON J. PAGLIN, et al.

TOTAL HOLDING = 0.953 AC.
 TOTAL R.O.W. REQUIRED = 0.023 AC. (1,004 SQ. FT.)
 REMAINDER = 0.930 AC.

PARCEL 3WU0096

WILLIAM C. HAVENER, et al.

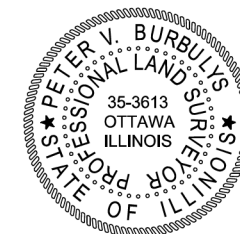
TOTAL HOLDING = 0.888 AC.
 TOTAL R.O.W. REQUIRED = 0.051 AC. (2,223 SQ. FT.)
 REMAINDER = 0.837 AC.

SURVEYOR'S STATEMENT

I, PETER V. BURBULYS, HEREBY CERTIFY THAT I AM A PROFESSIONAL LAND SURVEYOR OF THE STATE OF ILLINOIS, THAT THE SURVEY OF F.A.P. 41 (IL RT 17) WAS MADE BY ME OR UNDER MY DIRECTION, AND THAT THE SURVEY IS TRUE AND COMPLETE AS SHOWN TO THE BEST OF MY KNOWLEDGE AND BELIEF, THAT ALL MONUMENTS AND MARKS ARE OF THE CHARACTER AND OCCUPY THE POSITION SHOWN THEREON, AND ARE SUFFICIENT TO ENABLE THE SURVEY TO BE RETRACED. THIS PROFESSIONAL SERVICE CONFORMS TO THE CURRENT ILLINOIS MINIMUM STANDARDS FOR A BOUNDARY SURVEY.

DATED OCTOBER 2ND, 2013

BY: *[Signature]*
 PETER V. BURBULYS, ILLINOIS PROFESSIONAL LAND SURVEYOR NO. 35-3613 (EXPIRES NOV. 2014)



NOTE: BEARINGS AND DISTANCES ARE BASED UPON THE ILLINOIS STATE PLANE COORDINATE SYSTEM, (GRID) EAST ZONE, (NAD-83, 2007 ADJ.).

ALL AREAS ARE BASED ON GROUND MEASUREMENTS

COMBINED FACTOR = 0.9999637

TOTAL HOLDING AREA TAKEN FROM TAX ASSESSOR (NOT SURVEYED)

FILE NAME	USER NAME = burbulyspv	DESIGNED -	REVISED -
et\p\work\p\dot\burbulyspv\d0112119\036905-Sheet1.dgn		DRAWN -	REVISED -
	PLOT SCALE = 48,0000' / in.	CHECKED -	REVISED -
	PLOT DATE = 10/2/2013	DATE -	REVISED -

STATE OF ILLINOIS
 DEPARTMENT OF TRANSPORTATION

RIGHT OF WAY PLANS

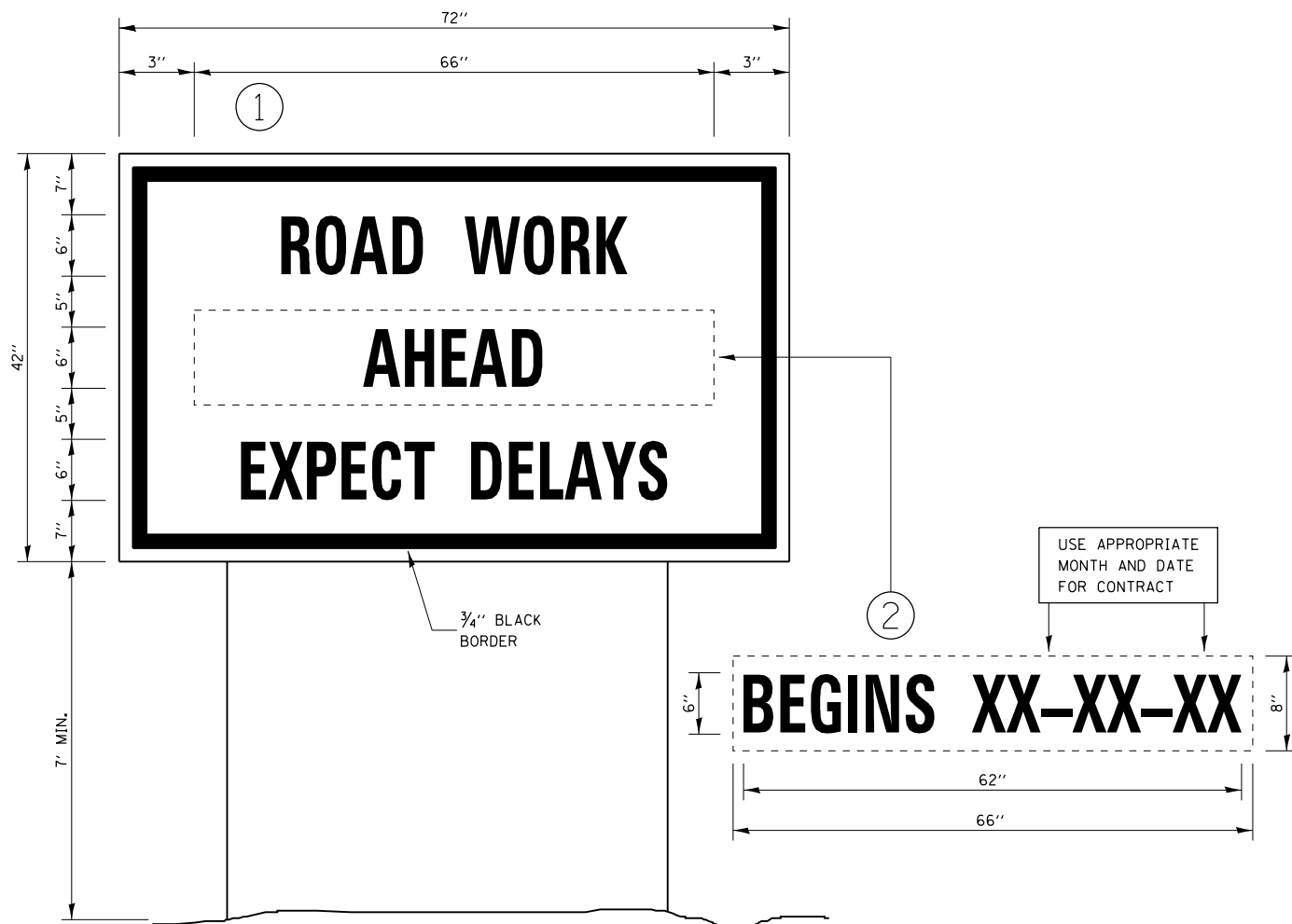
F.A.P. RTE.	SECTION	COUNTY	TOTAL SHEETS	SHEET NO.
41	(11)W&RS-1	KANKAKEE	450	112
CONTRACT NO. 66905				
SCALE: 1" = 20'	PROJECT	JOB NO. R-93-006-11	FED. ROAD DIST. NO. - [ILLINOIS] FED. AID PROJECT	
	SHEET 1	OF 30 SHEETS	STA. 1310+00.00 TO STA. 1316+00.00	

STATE OF ILLINOIS
 DEPARTMENT OF TRANSPORTATION

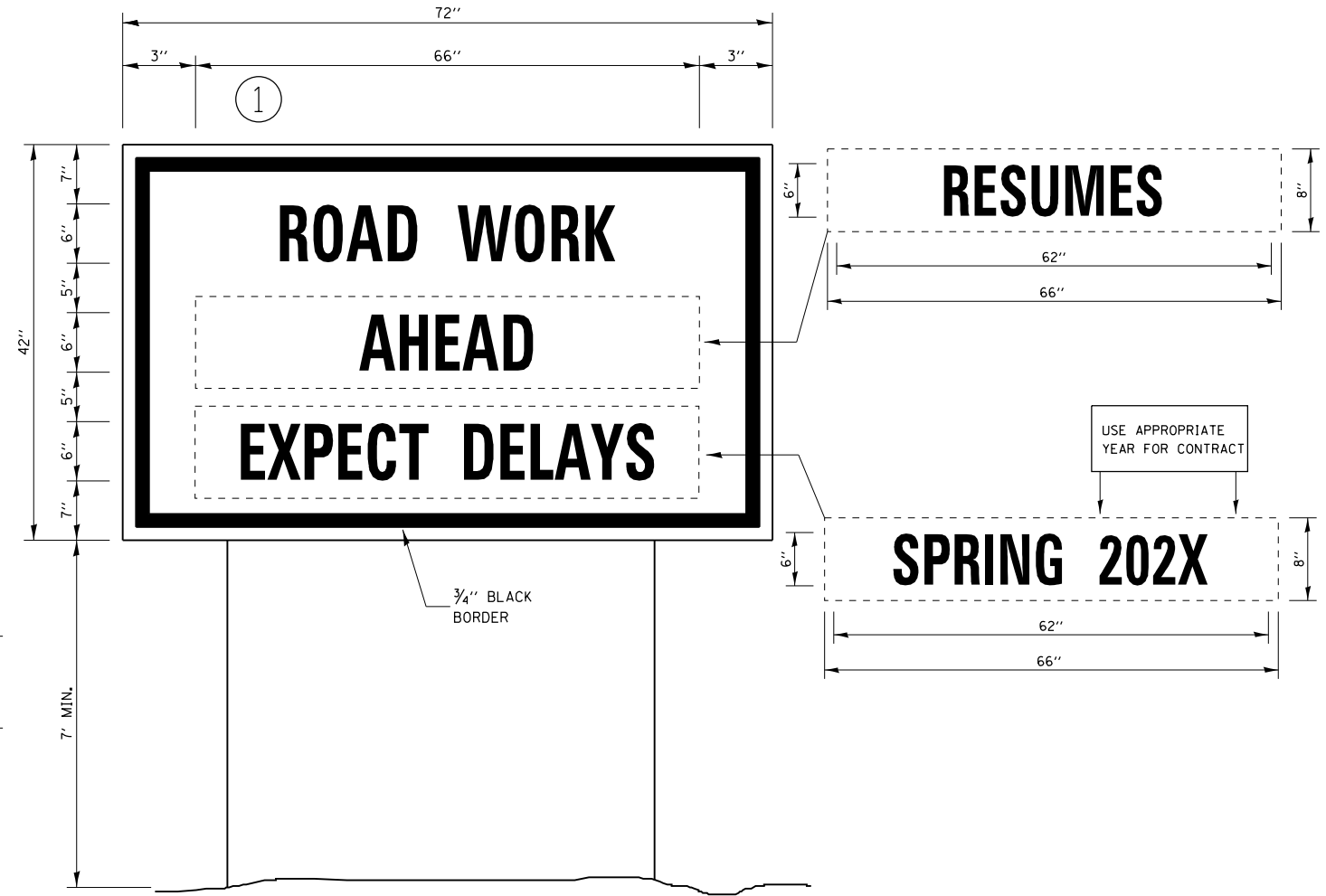
DETAILS

USER NAME = NOLASCOCJ	DESIGNED -	REVISED -
	DRAWN -	REVISED -
PLOT SCALE = 100,0000' / in.	CHECKED -	REVISED -
PLOT DATE = 5/1/2020	DATE -	REVISED -

SCALE:	SHEET 1	OF 1 SHEETS	STA.	TO STA.	F.A.P. RTE.	SECTION	COUNTY	TOTAL SHEETS	SHEET NO.
					41&330	(11)CJS & (15)CIS	KANKAKEE	11	10
					CONTRACT NO. 66L04				
					ILLINOIS FED. AID PROJECT				



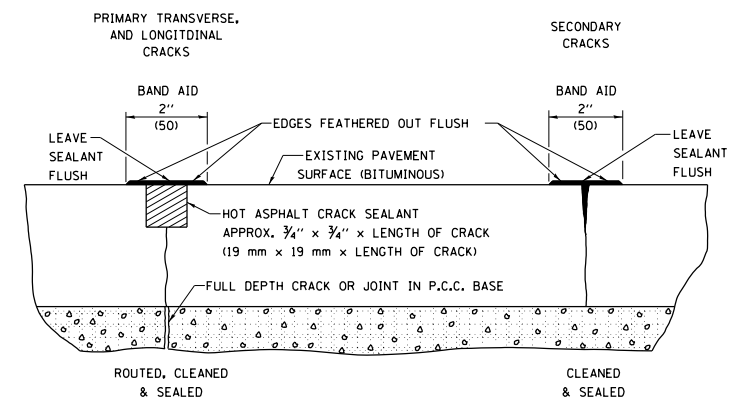
TEMPORARY INFORMATION SIGNING



WINTER SHUT DOWN SIGNING

NOTES:

1. USE 6" D BLACK LETTERING ON FLOURESENT ORANGE BACKGROUND.
2. ERECT SIGNS AT LOCATIONS IN ADVANCE OF THE "ROAD CONSTRUCTION AHEAD" SIGNS AS DIRECTED BY THE ENGINEER.
3. ERECT SIGN ① WITH INSTALLED PANEL ② A MINIMUM OF ONE WEEK PRIOR TO THE START OF THE LANE CLOSURE.
4. REMOVE PANEL ② ON THAT DATE.
5. SEE SPECIAL PROVISION "TEMPORARY INFORMATION SIGNING" FOR ADDITIONAL INFORMATION.
6. WILL BE PAID FOR PER SQ FT AS "TEMPORARY INFORMATION SIGNING". EACH SIGN = 21 SQ FT AND THE DATE PANEL ② WILL NOT BE MEASURED SEPARATELY FOR PAYMENT.



CRACK SEALING HMA PAVEMENT DETAIL

MODEL: Default
 FILE: h:\a\c\p\pub\hroom.dwg
 PROJECT: 0366L04\CADD\Drawings\DOT Office\Drawings\3\Project\0366L04\CADD\Drawings\DOT Office\Drawings\3\Project\0366L04\sh-crate.dwg

USER NAME = NOLASCOCJ	DESIGNED -	REVISED -
	DRAWN -	REVISED -
PLOT SCALE = 100.0000 ' / in.	CHECKED -	REVISED -
PLOT DATE = 5/1/2020	DATE -	REVISED -

**STATE OF ILLINOIS
DEPARTMENT OF TRANSPORTATION**

DETAILS	
SCALE:	SHEET OF SHEETS STA. TO STA.

F.A.P. RTE.	SECTION	COUNTY	TOTAL SHEETS	SHEET NO.
41/330	(11)CJS & (15)CIS	KANKAKEE	11	11
			CONTRACT NO. 66L04	
		ILLINOIS	FED. AID PROJECT	