

STATE OF ILLINOIS  
DEPARTMENT OF TRANSPORTATION

F.A.U. RTE.	SECTION	COUNTY	TOTAL SHEETS	SHEET NO.
6658	(10C)BRR	PEORIA	24	1
		ILLINOIS	CONTRACT NO. 68F66	

INDEX OF SHEETS

- 1 COVER SHEET
- 2 COMMITMENTS, GENERAL NOTES, & PROJECT SPECIFIC NOTES
- 3-4 SUMMARY OF QUANTITIES
- 5 PROJECT LOCATION
- 6 SCHEDULE OF QUANTITIES
- 7-9 TRAFFIC CONTROL DETAILS
- 10-13 REPAIR DETAILS
- 14-24 STRUCTURE PLANS (FOR INFORMATION ONLY)

# PROPOSED HIGHWAY PLANS

FAU ROUTE 6658 (IL 8)  
SECTION (10C)BRR  
CONTRACT MAINTENANCE  
BRIDGE REHABILITATION  
PEORIA COUNTY

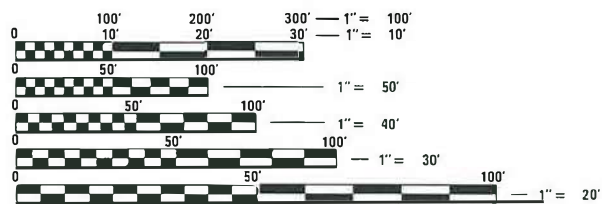
C-94-088-20

HIGHWAY STANDARDS

- 000001-07
- 001001-02
- 001006
- 701311-03
- 701321-18
- 701901-08
- 704001-08
- 782006-01
- BLR 21-9

IL ROUTE 8

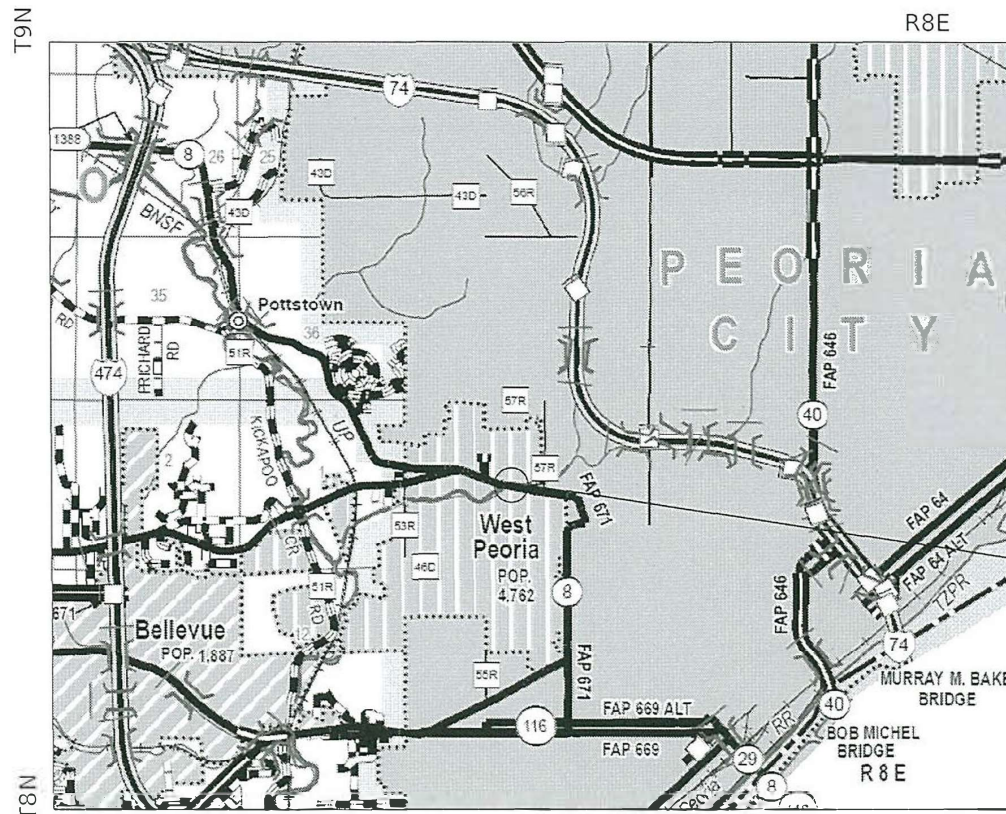
FUNCTIONAL CLASSIFICATION: MINOR ARTERIAL  
AADT = 11,100 (2018)  
S.U. = 2.7%  
M.U. = 1.7%  
POSTED SPEED = 40 MPH



FULL SIZE PLANS HAVE BEEN PREPARED USING STANDARD ENGINEERING SCALES. REDUCED SIZED PLANS WILL NOT CONFORM TO STANDARD SCALES. IN MAKING MEASUREMENTS ON REDUCED PLANS, THE ABOVE SCALES MAY BE USED.

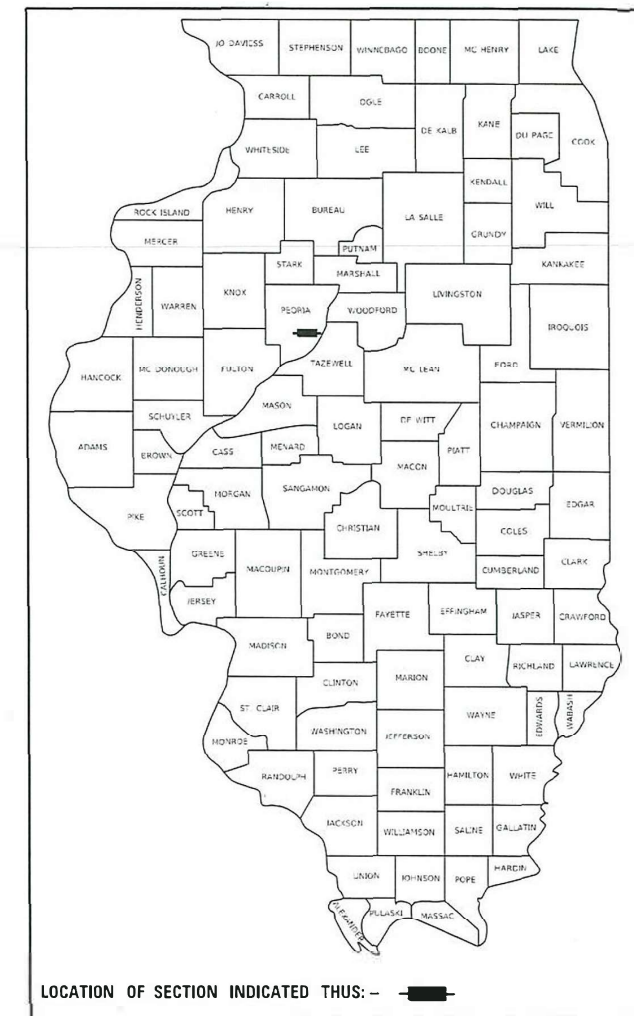
J.U.L.I.E.  
JOINT UTILITY LOCATION INFORMATION FOR EXCAVATORS  
1-800-892-0123  
OR 811

PROJECT ENGINEER: MIKE LEWIS (309) 671-3454  
PROJECT MANAGER: TRAVIS WALLENFANG (309) 671-3474  
CATALOG NO. 036065-00D  
CONTRACT NO. 68F66



PROJECT LOCATION  
S.N. 072-0056

D-94-056-20



PROJECT DESCRIPTION:

Bridge beam replacement on S.N. 072-0056 carrying IL 8 (Farmington Rd) over Dry Run Creek and minor repairs to the flume underneath the structure in West Peoria.

STATE OF ILLINOIS  
DEPARTMENT OF TRANSPORTATION

SUBMITTED May 15, 2020  
Kenai A. Barnett, RSP  
REGIONAL ENGINEER

June 26, 2020 [Signature]  
ENGINEER OF DESIGN AND ENVIRONMENT

June 26, 2020 [Signature]  
DIRECTOR OF HIGHWAYS PROJECT IMPLEMENTATION 13

PRINTED BY THE AUTHORITY  
OF THE STATE OF ILLINOIS

**COMMITMENTS**

No commitments have been made for this project.

**PROPERTY OWNER ACCESS REQUIREMENTS**

Access must be maintained to all existing properties during construction per Article 107.09 unless arrangements are made in writing by the Contractor with the property owners with a copy to the Engineer for short-term closures.

**ENVIRONMENTAL REVIEWS**

Prior to the use of any proposed borrow areas, use areas (temporary access roads, detours, run-arounds, etc.) and/or waste areas, the Contractor shall file the required environmental resource request surveys according to Section 107.22 of the Standard Specifications. These surveys are required in order for the Department to conduct cultural and biological resource surveys for the proposed site.

The required environmental resource documentation shall include the following:

- \* BDE Form 2289 (Cultural and Natural Resources Review of Borrow Areas)
- \* BDE Form 2290 (Waste/Use Area Review)
- \* A location map showing the size limits and location of the use area
- \* Color photographs depicting the use area
- \* Borrow Area Entry Agreement form – D4 PI0101

Prior to any waste materials being removed from the construction site the required environmental resource surveys shall be obtained and filed by the Contractor. Excess waste products removed from the construction site shall be disposed of as required in Section 202.03 of the Standard Specifications.

Any protruding metal bars shall be removed prior to the disposal of broken concrete at approved disposal sites.

Please note that a minimum of four weeks shall be allowed for the District to obtain the required environmental clearances and six weeks for the required borrow site environmental clearances.

**POLYMERIZED BITUMINOUS MATERIALS (TACK COAT) RATES**

Surface Type	Residual Rate
Milled (HMA or PCC)	0.08 lb /sq ft
Existing Pavement	0.08 lb /sq ft
Fog Coat (between lifts)	0.08 lb /sq ft
PPC Beam (Waterproofing)	0.20 lb /sq ft

**HOT-MIX ASPHALT MIXTURE REQUIREMENTS**

Mixture Use(s):	HMA SURFACE COURSE (2 LIFTS)
ACPC:	PG 64-22
Design Air Voids:	4.0% @ N=50
Mixture Composition: (Gradation Mixture):	IL 9.5 FG
Friction Aggregate:	Mix C
Quality Management:	QC QA

**Notes:**

- 1) Individual lift thickness of each mix type will be no less than 3 times nominal maximum aggregate size and no more than 6 times nominal maximum.
- 2) For design purposes, mixture weight for all mixes is determined to be 112.0 lb/s.y/ft., unless otherwise noted.
- 3) Sublot sizes for PFP and QCP mixes will be 1,000 tons, unless otherwise agreed to by the Engineer and the paving Contractor.

**PROJECT SPECIFIC NOTES**

**WATERPROOFING /PAVING SEQUENCE**

1. The newly placed beam shall be sealed with Polymerized Bituminous Materials (Tack Coat) applied at a rate of 0.20 LB /SQ FT Residual AC. The applied material shall extend to minimum height of 1 3/4 inches along the vertical faces of the area to be paved.
2. Place the first lift of the proposed HMA surface course to a compacted depth of 1 3/4 inches.
3. Apply Polymerized Bituminous Materials (Tack Coat) at a rate of 0.08 LB /SQ FT Residual AC between lifts and extending along the remaining vertical face of the area to be paved.
4. Place the second lift of the proposed HMA surface course to fill the remaining 1 1/2 inches.

MODEL: Default  
 FILE: Model: P:\pub\barroom.dwg  
 I:\Illinois.gov\PIWIDOT\Documents\DOT\_Offices\District\_4\Projects\IDA\_68F66\CADD\Drawn\CAD\Sheets\DA68F66-shc-gen-note.dgn

USER NAME = \$USERS	DESIGNED -	REVISED -
	DRAWN -	REVISED -
PLOT SCALE = 1:100	CHECKED -	REVISED -
PLOT DATE = 5/15/2020	DATE -	REVISED -

**STATE OF ILLINOIS  
DEPARTMENT OF TRANSPORTATION**

**COMMITMENTS, GENERAL NOTES,  
& PROJECT SPECIFIC NOTES**

SCALE: SHEET 1 OF 1 SHEETS STA. TO STA.

F.A.U. RTE.	SECTION	COUNTY	TOTAL SHEETS	SHEET NO.
6658	(10C)BRR	PEORIA	24	2
CONTRACT NO. 68F66				
ILLINOIS FED. AID PROJECT				

CODE NO.	ITEM	UNIT	TOTAL QUANTITY	CONSTRUCTION CODE	
				PEORIA	100% STATE
				CONT. MAINT.	
				S.N. 072-0056	
				0013	
40600295	POLYMERIZED BITUMINOUS MATERIALS (TACK COAT)	POUND	72	72	
40604000	HOT-MIX ASPHALT SURFACE COURSE, IL-9.5FG, MIX "C", N50	TON	3.8	3.8	
44000162	HOT - MIX ASPHALT SURFACE REMOVAL, 3 1/4"	SQ YD	27	27	
50400505	PRECAST PRESTRESSED CONCRETE DECK BEAMS (27" DEPTH)	SQ FT	174	174	
67100100	MOBILIZATION	L SUM	1	1	
70106500	TEMPORARY BRIDGE TRAFFIC SIGNALS	EACH	1	1	
70107005	PAVEMENT MARKING BLACKOUT TAPE, 5"	FOOT	960	960	
70107012	PAVEMENT MARKING BLACKOUT TAPE, 12"	FOOT	30	30	
70107025	CHANGEABLE MESSAGE SIGN	CAL DA	10	10	
70300150	SHORT TERM PAVEMENT MARKING REMOVAL	SQ FT	430	430	
70400100	TEMPORARY CONCRETE BARRIER	FOOT	325	325	
70600240	IMPACT ATTENUATORS, TEMPORARY (NON-REDIRECTIVE), TEST LEVEL 2	EACH	2	2	
X0320047	REMOVAL OF EXISTING PRECAST PRESTRESSED CONCRETE DECK BEAMS	SQ FT	179	179	
X7010216	TRAFFIC CONTROL AND PROTECTION (SPECIAL)	L SUM	1	1	

MODEL: Default  
 FILE: \\P:\anrcem\dot\1\mota\gov\DOT\Documents\DOT - Office\District 4\Projects\04\_68F66\CAD\Sheet\0468F66-ah-500.dgn

USER NAME = *USER*	DESIGNED -	REVISED -
	DRAWN -	REVISED -
PLOT SCALE = 1:1000	CHECKED -	REVISED -
PLOT DATE = 5/15/2020	DATE -	REVISED -

**STATE OF ILLINOIS**  
**DEPARTMENT OF TRANSPORTATION**

**SUMMARY OF QUANTITIES**

F.A.U. RTE.	SECTION	COUNTY	TOTAL SHEETS	SHEET NO.
6658	(10C)BRR	PEORIA	24	3
CONTRACT NO. 68F66				
ILLINOIS LEED AID PROJECT				

MODEL:\dof\au\it  
 FILE:\wef\p\l\er\om\es\il\lous\p\l\dt\Documents\DDT\_Offices\District 4\Projects\14\_68F66\CAD\to\c\o\m\p\l\dt\500.dgn

CODE NO.	ITEM	UNIT	TOTAL QUANTITY	CONSTRUCTION CODE	
				URBAN	
				PEORIA	
				100% STATE	
				CONT. MAINT.	
				S.N. 072-0056	
				0013	
X7040125	PINNING TEMPORARY CONCRETE BARRIER	EACH	6	6	

USER NAME = *USER*	DESIGNED -	REVISED -
	DRAWN -	REVISED -
PLOT SCALE = 1:100	CHECKED -	REVISED -
PLOT DATE = 5/15/2020	DATE -	REVISED -

**STATE OF ILLINOIS  
 DEPARTMENT OF TRANSPORTATION**

**SUMMARY OF QUANTITIES**

F.A.U. RTÉ.	SECTION	COUNTY	TOTAL SHEETS	SHEET NO.
6658	(10C)BRR	PEORIA	24	4
ILLINOIS FED. AID PROJECT			CONTRACT NO. 68F66	



POOLS AND SPAS

N. RHODORA AVE.

Beam Replacement

S.N. 072-0056

CONCRETE FLUME REPAIR, SPECIAL  
- Existing concrete flume near north corner of east abutment  
- See Special Provisions

CONCRETE BOTTOM

TIMBER

TIMBER

CONCRETE BOTTOM

IL 8 (FARMINGTON RD)

TIMBER

TIMBER

MODEL: Default  
FILE: \\nas01c:\pub\baronm.d\at\links\gov\PI\DOT\Documents\DOT\_Offices\District\_4\Projects\IDA\_68F66\CADD\CA\Drawings\DA68F66-8r-240a.dgn

USER NAME = \$USERS	DESIGNED -	REVISED -
	DRAWN -	REVISED -
PLOT SCALE = 1:40	CHECKED -	REVISED -
PLOT DATE = 5/15/2020	DATE -	REVISED -

STATE OF ILLINOIS  
DEPARTMENT OF TRANSPORTATION

PROJECT LOCATION			
SCALE:	SHEET 1	OF 1	SHEETS
	STA.	TO STA.	

F.A.U. RTE.	SECTION	COUNTY	TOTAL SHEETS	SHEET NO.
6658	(10C)BRR	PEORIA	24	5
CONTRACT NO. 68F66				
ILLINOIS FED. AID PROJECT				

MOBILIZATION	
LOCATION	L SUM
JOBSITE	1

CHANGEABLE MESSAGE SIGN	
LOCATION	CAL DAY
JOBSITE	10

2 SIGNS @ 5 DAYS EACH

PAVEMENT MARKING BLACKOUT TAPE				
Location	Marking Type	5"	12"	SHORT TERM PAVT MARKING REMOVAL
		FOOT	FOOT	SQ FT
Sta. 28+90 to 30+50	Solid & Skip Dash	200		83
Sta. 30+50 to 33+50	Solid 4"	300		125
Sta. 33+50 to 33+80	Solid & Skip Dash	40		17
Sta. 33+80 to 34+30	Double Solid	100		42
Sta. 34+30 to 35+00	Median	320	30	163
TOTAL		960	30	430

\* INFORMATIONAL PURPOSES ONLY - SEE SPECIAL PROVISIONS\*

CONCRETE FLUME REPAIR (SPECIAL)	
LOCATION	PCC - CULVERT LINING MIX
	CU YD
EXISTING FLUME NEAR NORTH CORNER OF EAST ABUTMENT	5.0

TRAFFIC CONTROL & PROTECTION					
	TRAFFIC CONTROL & PROTECTION (SPECIAL)	TEMPORARY CONCRETE BARRIER	PINNING TEMPORARY CONCRETE BARRIER	TEMPORARY BRIDGE TRAFFIC SIGNALS	TEMPORARY IMPACT ATTENUATOR
LOCATION	L SUM	FT	EACH	EACH	EACH
JOBSITE	1	325	6	1	2

BEAM REPLACEMENT						
LOCATION	HMA SURFACE REMOVAL 3 1/4"	REM EX PPC DECK BEAMS	PPC DECK BEAM (27" DEPTH)	POLY BIT. MAT. (TACK COAT) 0.20 LB/SF	POLY BIT. MAT. (TACK COAT) 0.08 LB/SF	HMA SC IL 9.5 FG MIX C N50 (2 LIFTS)
	SQ YD	SQ FT	SQ FT	LBS	LBS	TON
SN 072-0056 SPAN 1 - BEAM 3	27.00	179	174	52.0	20.0	4.9
				72		

MODEL: Default  
FILE: \\nashc-pub\pub\aroom\dat\illinois.gov\PIWDOT\Documents\DOT\_Offices\Director\_4\Projects\ID4\_68F66\CAD\Drawn\CA\Drawn\68F66-shc-schedule.dgn

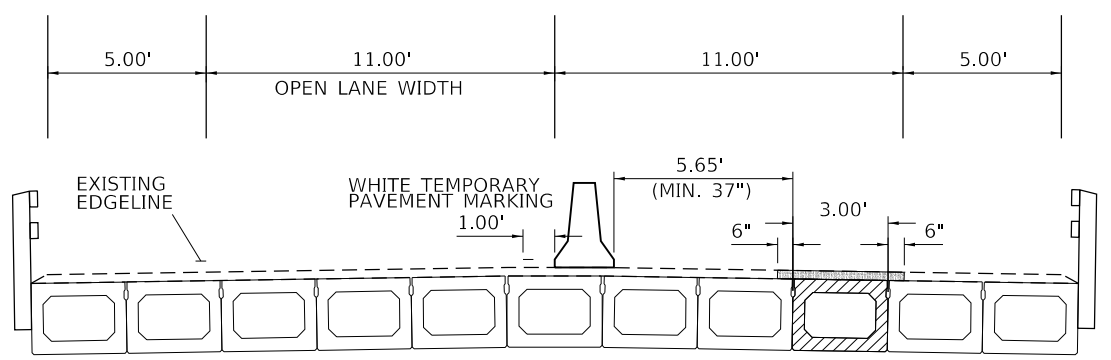
USER NAME = \$USERS	DESIGNED -	REVISED -
	DRAWN -	REVISED -
PLOT SCALE = 1:100	CHECKED -	REVISED -
PLOT DATE = 5/15/2020	DATE -	REVISED -

STATE OF ILLINOIS  
DEPARTMENT OF TRANSPORTATION

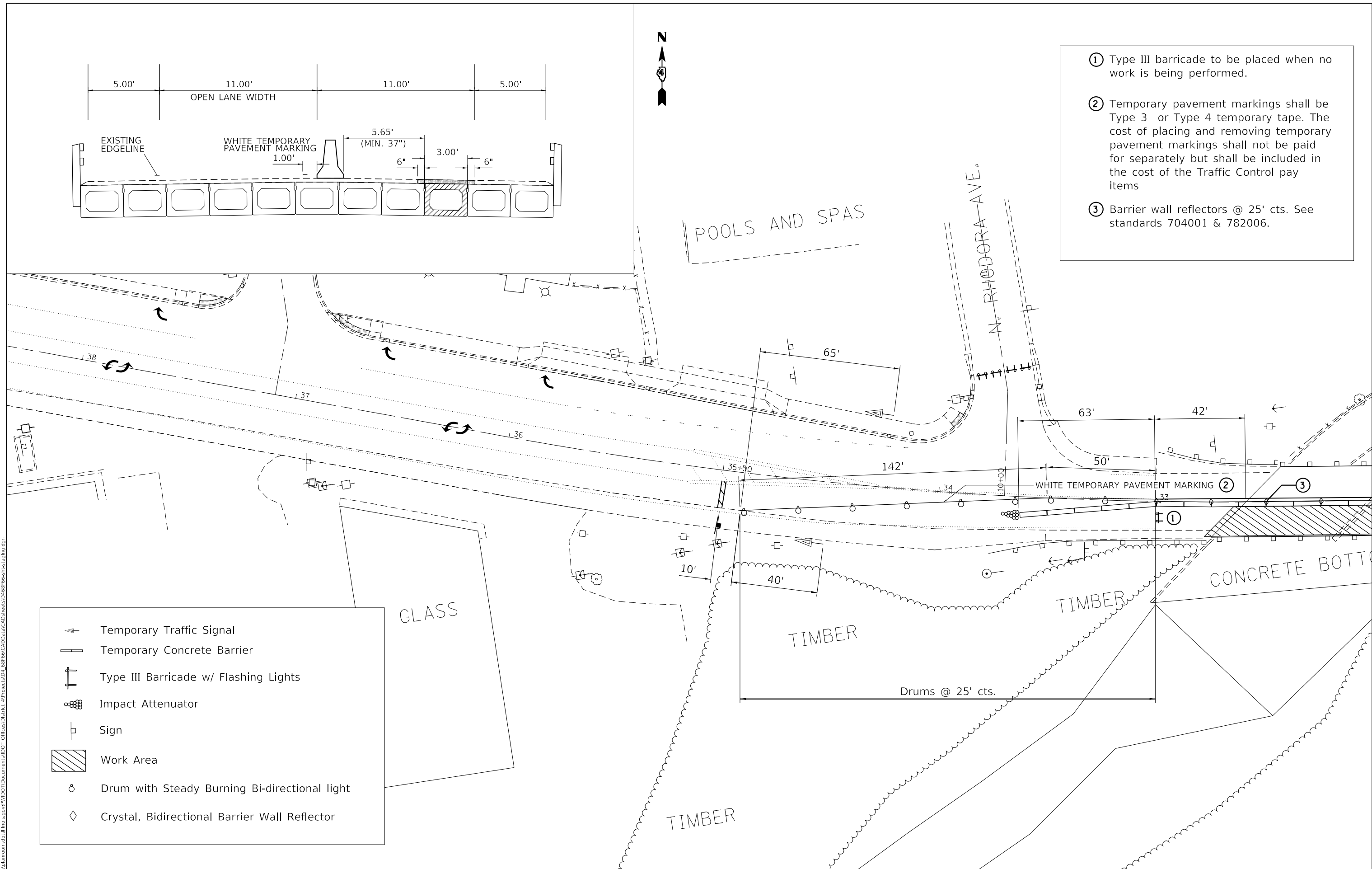
SCHEDULE OF QUANTITIES

SCALE: SHEET 1 OF 1 SHEETS STA. TO STA.

F.A.U. RTE.	SECTION	COUNTY	TOTAL SHEETS	SHEET NO.
6658	(10C)BRR	PEORIA	24	6
CONTRACT NO. 68F66			ILLINOIS FED. AID PROJECT	



- ① Type III barricade to be placed when no work is being performed.
- ② Temporary pavement markings shall be Type 3 or Type 4 temporary tape. The cost of placing and removing temporary pavement markings shall not be paid for separately but shall be included in the cost of the Traffic Control pay items
- ③ Barrier wall reflectors @ 25' cts. See standards 704001 & 782006.



- Temporary Traffic Signal
- Temporary Concrete Barrier
- Type III Barricade w/ Flashing Lights
- Impact Attenuator
- Sign
- Work Area
- Drum with Steady Burning Bi-directional light
- Crystal, Bidirectional Barrier Wall Reflector

MODEL: Default  
 FILE: \\nrcs-pub\baronm.d\at\illinois.gov\PI\DOT\Documents\DOT\_Offices\Director\_of\Projects\DA\_68F66\CADD\Drawings\Drawings\TrafficControl\TrafficControl.dgn

USER NAME = \$USERS	DESIGNED -	REVISED -
PLOT SCALE = 1:40	DRAWN -	REVISED -
PLOT DATE = 5/15/2020	CHECKED -	REVISED -
	DATE -	REVISED -

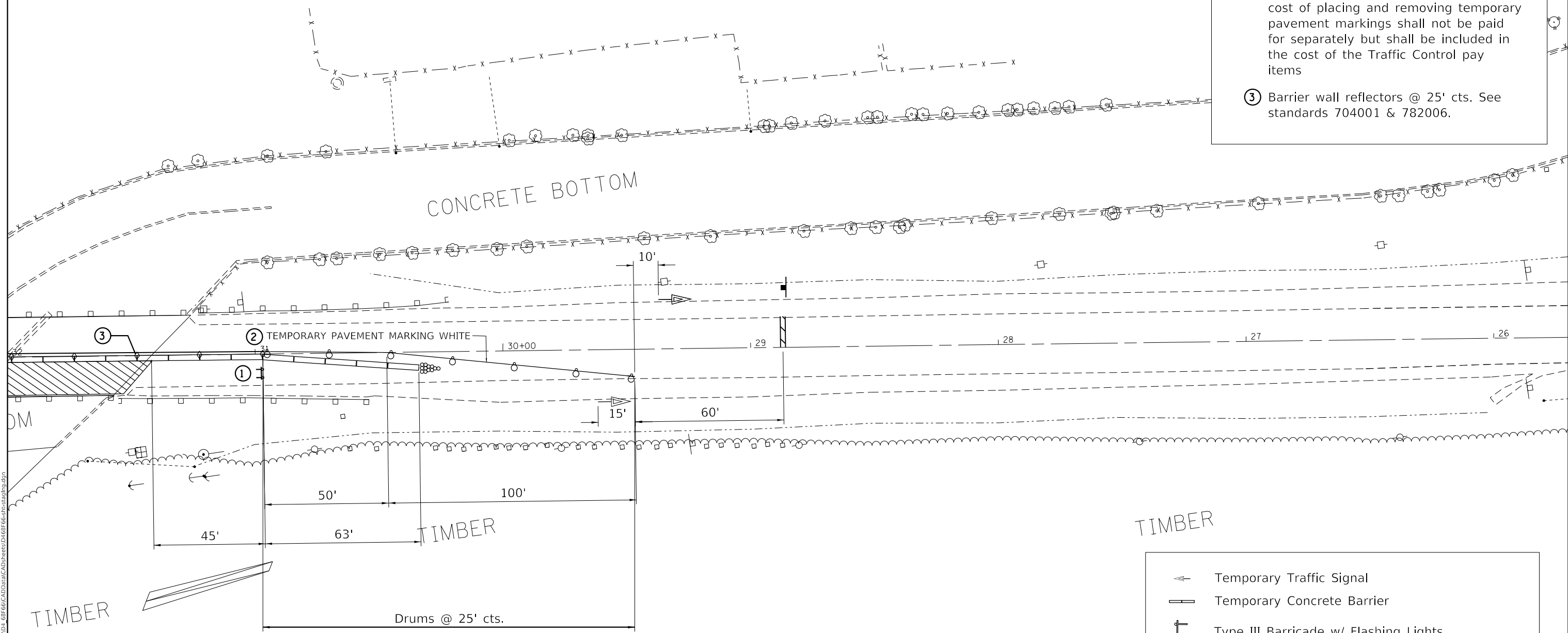
**STATE OF ILLINOIS  
DEPARTMENT OF TRANSPORTATION**

<b>TRAFFIC CONTROL DETAIL - TRAFFIC CONTROL &amp; PROTECTION (SPECIAL)</b>			
SCALE:	SHEET 1	OF 3	SHEETS
	STA.		TO STA.

F.A.U. RTE.	SECTION	COUNTY	TOTAL SHEETS	SHEET NO.
6658	(10C)BRR	PEORIA	24	7
CONTRACT NO. 68F66			ILLINOIS FED. AID PROJECT	



- ① Type III barricade to be placed when no work is being performed.
- ② Temporary pavement markings shall be Type 3 or Type 4 temporary tape. The cost of placing and removing temporary pavement markings shall not be paid for separately but shall be included in the cost of the Traffic Control pay items
- ③ Barrier wall reflectors @ 25' cts. See standards 704001 & 782006.



**TIMBER**

- Temporary Traffic Signal
- Temporary Concrete Barrier
- Type III Barricade w/ Flashing Lights
- Impact Attenuator
- Sign
- Work Area
- Drum with Steady Burning Bi-directional light
- Crystal, Bidirectional Barrier Wall Reflector

MODEL: Default  
 FILE: h:\m\c\p\pub\barroom.dwg  
 PROJECT: 68F66  
 OFFICE: IDOT  
 DATE: 5/15/2020

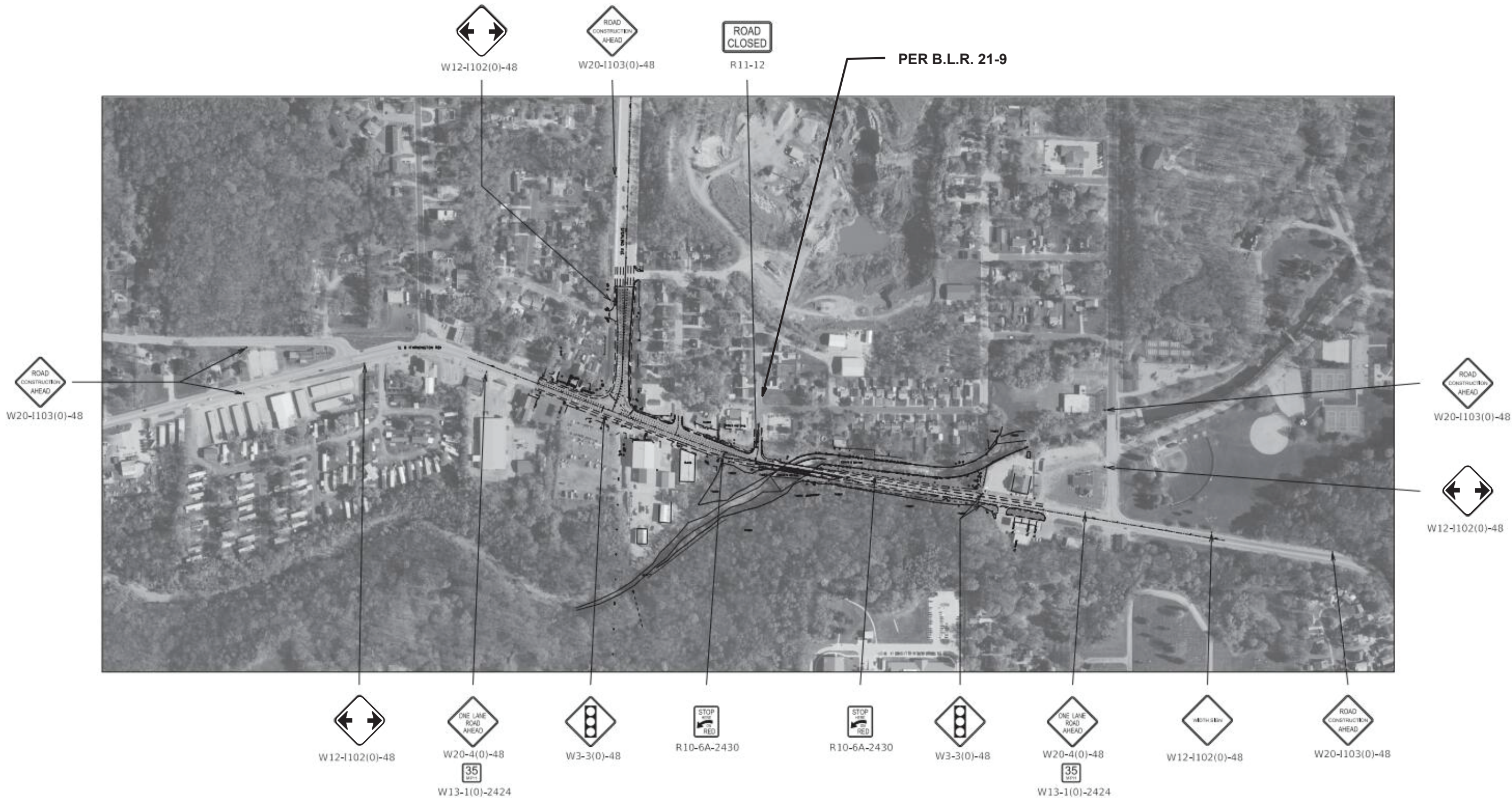
USER NAME = \$USERS	DESIGNED -	REVISED -
PLOT SCALE = 1:40	DRAWN -	REVISED -
PLOT DATE = 5/15/2020	CHECKED -	REVISED -
	DATE -	REVISED -

**STATE OF ILLINOIS  
DEPARTMENT OF TRANSPORTATION**

<b>TRAFFIC CONTROL DETAIL - TRAFFIC CONTROL &amp; PROTECTION (SPECIAL)</b>	
SCALE:	SHEET 2 OF 3 SHEETS STA. TO STA.

F.A.U. RTE.	SECTION	COUNTY	TOTAL SHEETS	SHEET NO.
6658	(10C)BRR	PEORIA	24	8
CONTRACT NO. 68F66				
ILLINOIS FED. AID PROJECT				





MODEL: D:\mxd\...  
 FILE: \...  
 USER: ...  
 DATE: 5/15/2020

USER NAME	- SUSERS	DESIGNED	-	REVISED	-
DRAWN	-	CHECKED	-	REVISED	-
PLOT SCALE	- 1:100	DATE	-	REVISED	-
PLOT DATE	- 5/15/2020				

**STATE OF ILLINOIS**  
**DEPARTMENT OF TRANSPORTATION**

**TRAFFIC CONTROL DETAIL - SIGN LAYOUT**  
 SCALE: SHEET 3 OF 3 SHEETS STA. TO STA.

F.A.U. ATE.	SECTION	COUNTY	TOTAL SHEETS	SHEET NO.
6658	(10C)BRR	PEORIA	24	9
CONTRACT NO. 68F66				
BLINDS		FED. AID PROJECT		

**GENERAL NOTES**

Plan dimensions and details relative to existing plans are subject to nominal construction variations. The Contractor shall field verify existing dimensions and details affecting new construction and make necessary approved adjustments prior to construction or ordering of materials. Such variations shall not be cause for additional compensation for a change in scope of the work, however, the Contractor will be paid for the quantity actually furnished at the unit price bid for the work.

The contractor is advised that the existing PPC Deck Beams are in a deteriorated condition with reduced load carrying capacity. It is the contractors responsibility to account for the condition of the beams when developing construction procedures.

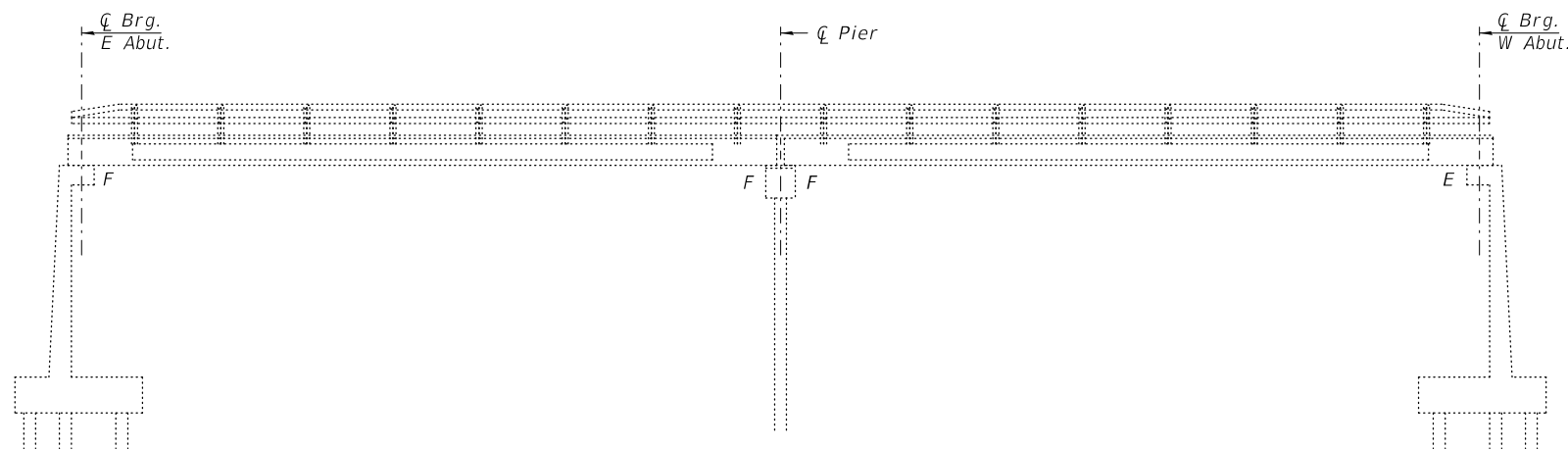
If the contractor's procedure for existing beam removal or placement of new beams involves placement of cranes or other heavy equipment on the bridge, a detailed procedure shall be submitted to the Engineer for approval. The procedure shall include calculations, prepared and sealed by an Illinois Licensed Structural Engineer, verifying that the equipment and procedure used will not overstress the new or existing beams. To distribute load to multiple beams and protect the existing surface, in all cases a double layer mat of heavy timbers shall be used at all times under crane tracks or wheels and any outriggers in the down position. If necessary, shims shall be used under the crane mat to ensure uniform contact with the underlying beams. If heavy equipment will be placed on new PPC deck beams, the following shall be done prior to placement of the timber mats: placement and tightening of transverse tie assemblies, grouting and curing the dowel rods 24 hours minimum and grouting and curing the shear keys.

Any damage done to the bridge during beam removal shall be repaired by the Contractor. Cost to be included in the cost of Removal of Existing PPC Deck Beams.

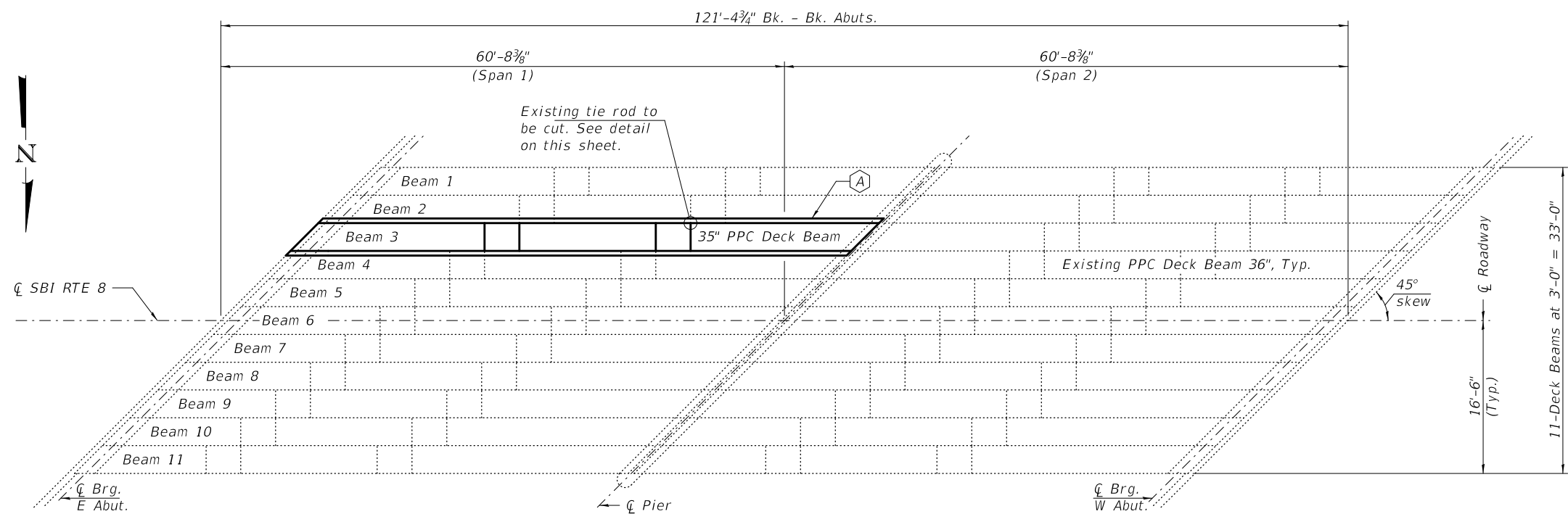
The top surface of the beams shall be finished according to the IDOT Manual for Fabrication of Precast Prestressed Concrete Products.

Temporary concrete barrier shall only be anchored into the overlay and not into the PPC Deck Beams.

**DESIGN STRESSES**  
**PRECAST PRESTRESSED UNITS**  
 $f'_c = 6,000 \text{ psi}$   
 $f'_{ci} = 5,000 \text{ psi}$   
 $f'_s = 270,000 \text{ psi}$  ( $1/2"$ Ø low lax strands)  
 $f'_{si} = 201,960 \text{ psi}$  ( $1/2"$ Ø low lax strands)

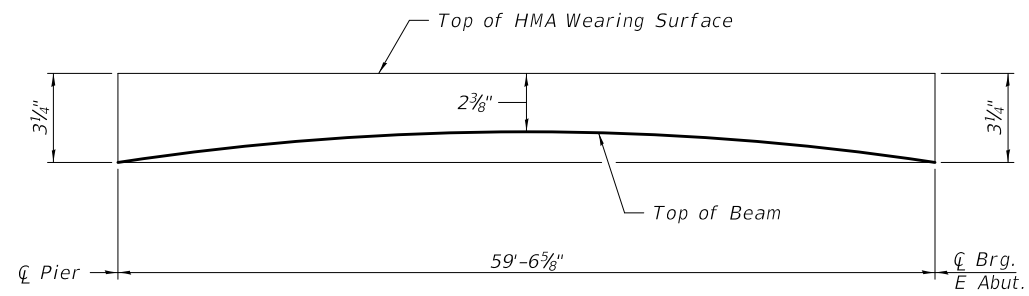


**ELEVATION**

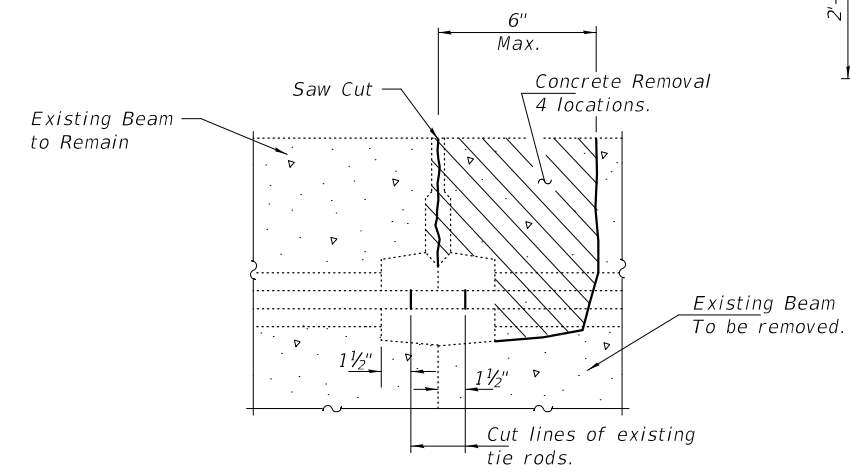


**PLAN**

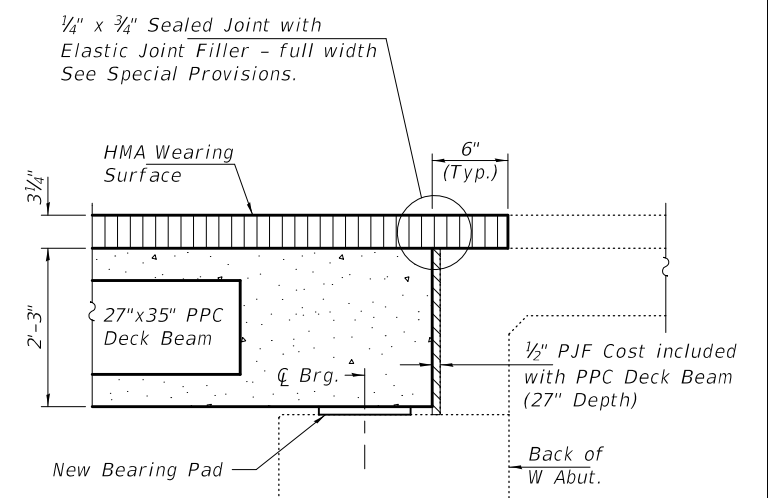
(A) - Remove and Replace Precast Prestressed Concrete Deck Beam.



**ANTICIPATED INITIAL CAMBER DIAGRAM**



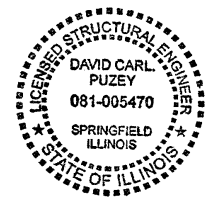
**BEAM REMOVAL DETAIL AT TRANSVERSE TIES**



**SECTION THRU E. ABUTMENT (Looking South)**

**BILL OF MATERIAL**

ITEM	UNIT	QUANTITY
Removal of Existing PPC Deck Beam	Sq. Ft.	179
PPC Deck Beam (27" Depth)	Sq. Ft.	174
HMA Surface Removal	Sq. Yd.	27
HMA Surface Course, IL-9.5FG, Mix "C", N 50	Tons	3.8



Expires 11/30/2020

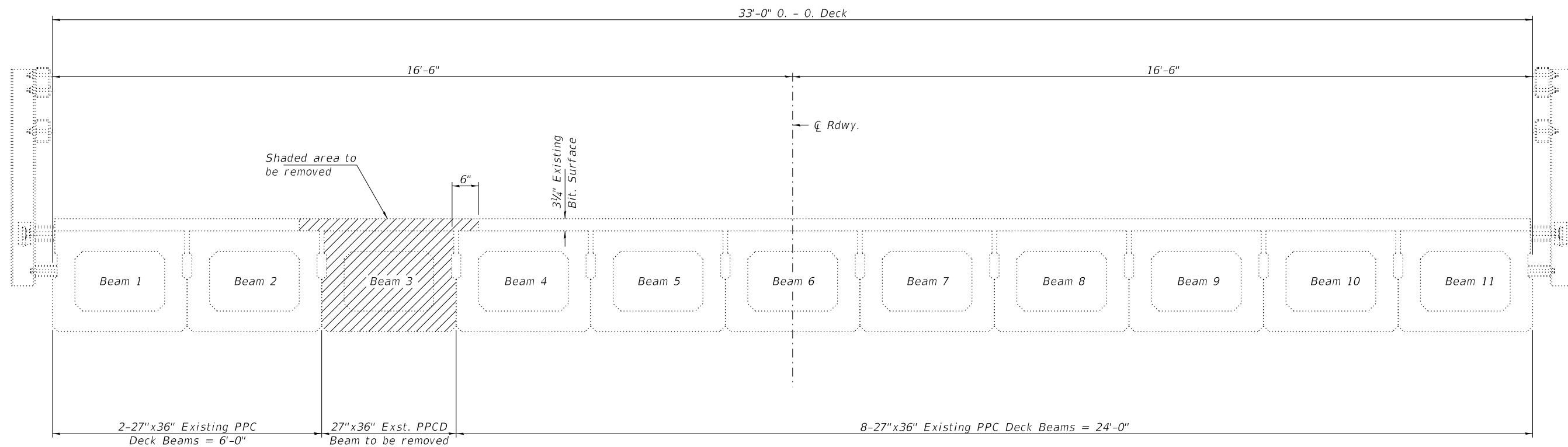
DESIGNED - Jeffrey Burke	EXAMINED - <i>Tring A. Beck</i>	DATE - JUNE 26, 2020
CHECKED - Adrian T. Holloway	PASSED - <i>David Carl Puzey</i>	REVISD -
DRAWN - Venkat Reddy	ENGINEER OF BRIDGES AND STRUCTURES	REVISD -
CHECKED - JSB ATH		

**STATE OF ILLINOIS DEPARTMENT OF TRANSPORTATION**

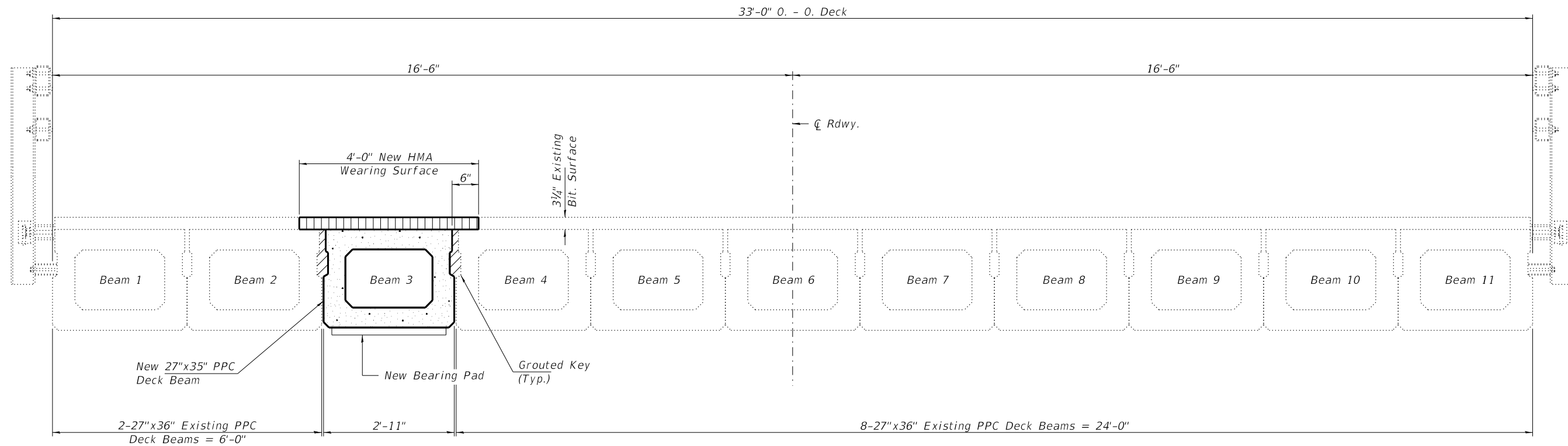
**GENERAL PLAN AND ELEVATION IL 8 OVER DRY RUN CREEK SN 072-0056**

SHEET NO. 1 OF 4 SHEETS

S.B.I. RTE. 8	SECTION (10C)BRR	COUNTY PEORIA	TOTAL SHEETS 24	SHEET NO. 10
ILLINOIS			CONTRACT NO. 68F66	
FED. AID PROJECT				



**REMOVAL DETAIL**  
(Looking West)



**CROSS SECTION**  
(Looking West)

DESIGNED - JSB  
 CHECKED - ATH  
 DRAWN - Venkat Reddy  
 CHECKED - JSB ATH

EXAMINED  
 PASSED  
 ENGINEER OF STRUCTURAL SERVICES  
 ENGINEER OF BRIDGES AND STRUCTURES

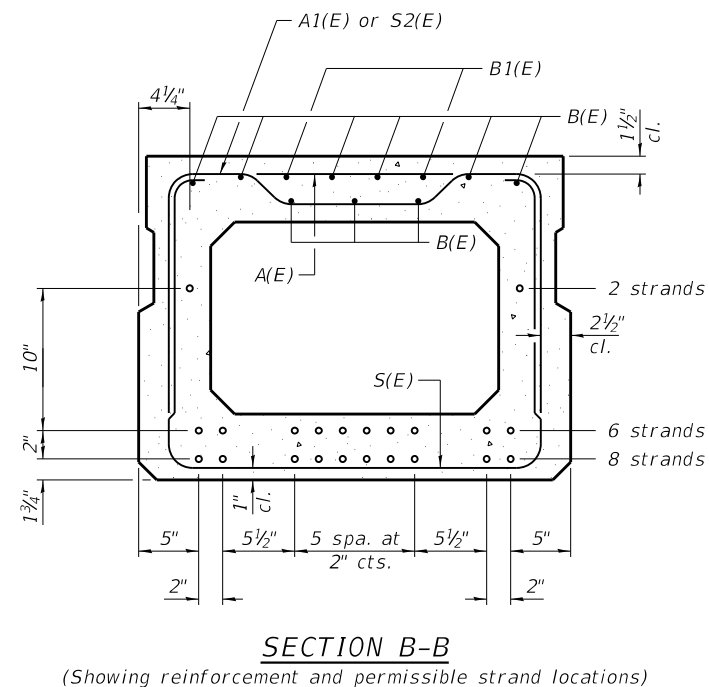
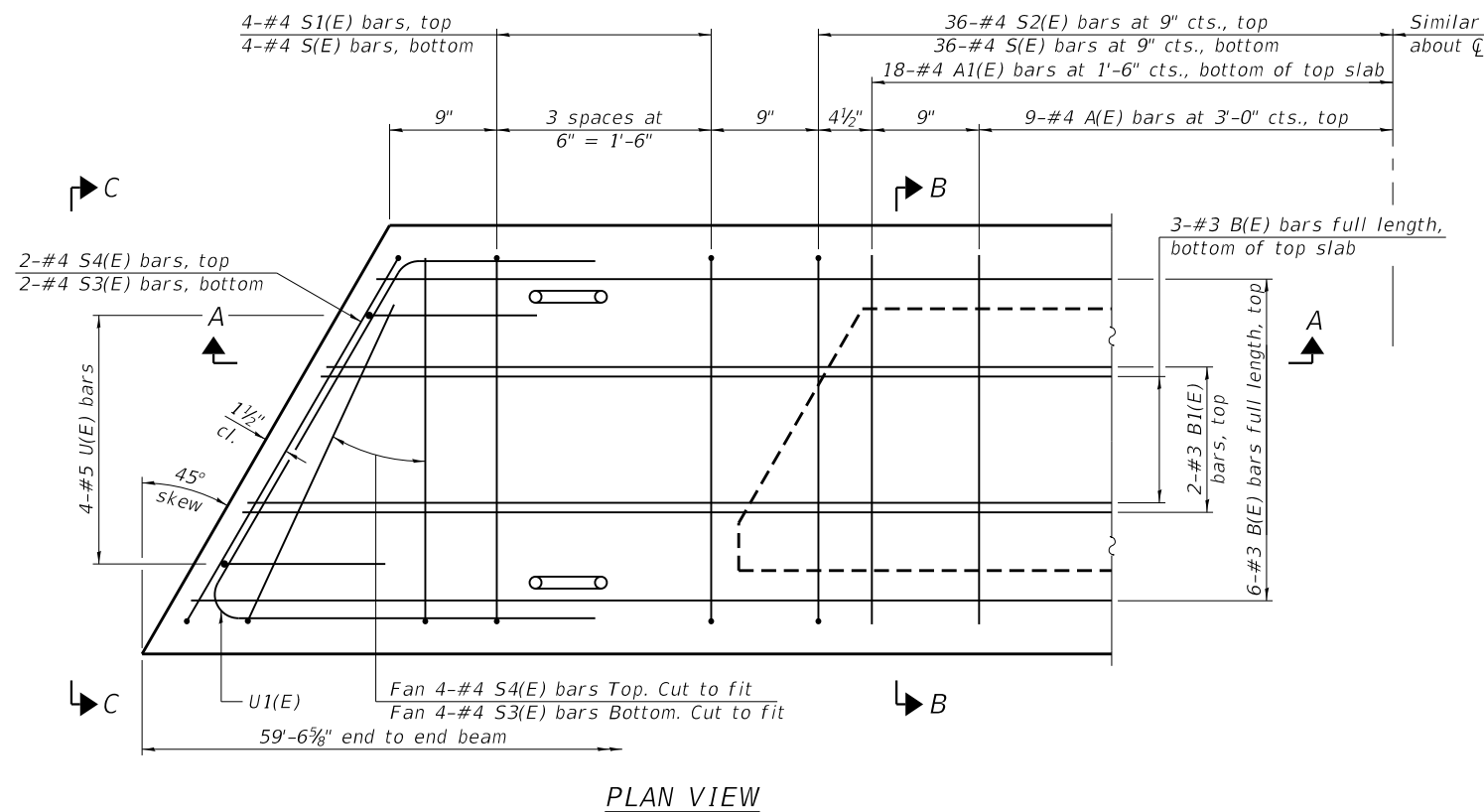
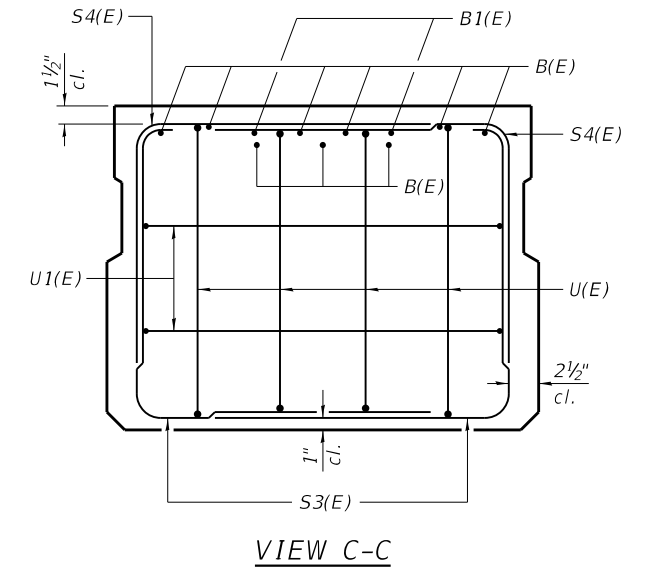
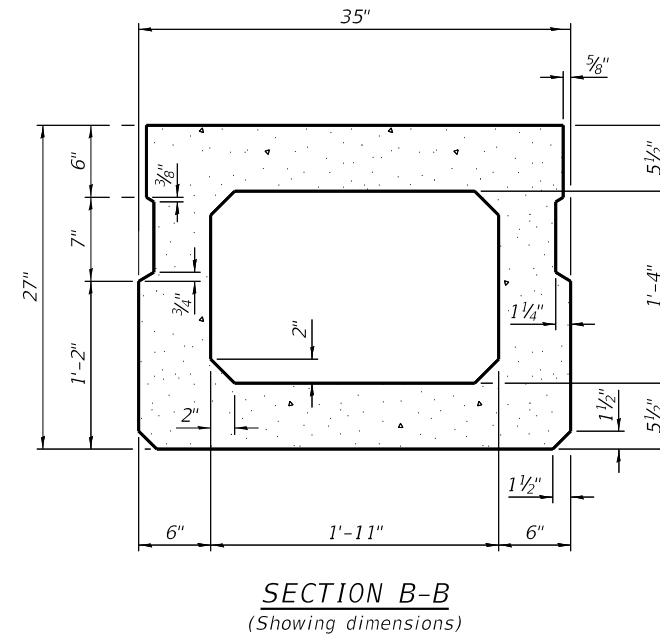
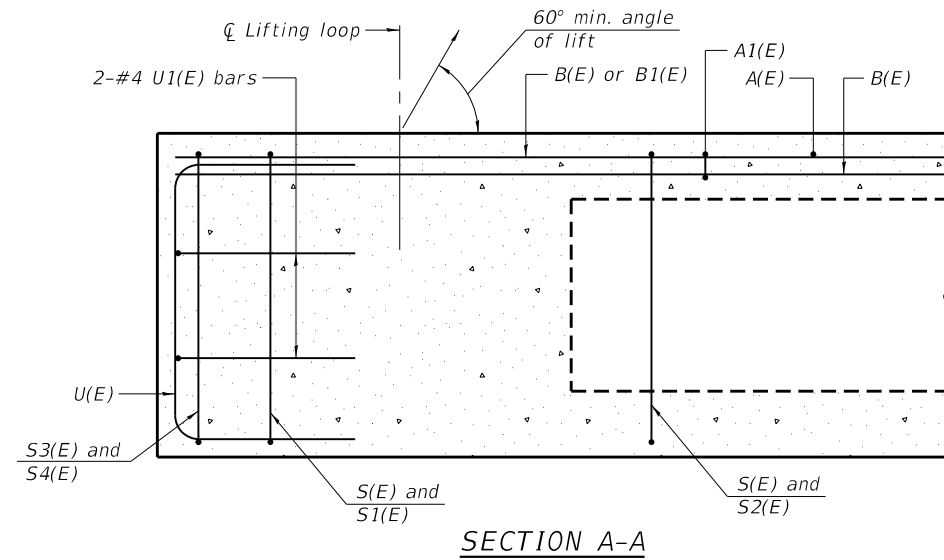
DATE - JUNE 26, 2020  
 REVISED -  
 REVISED -

STATE OF ILLINOIS  
 DEPARTMENT OF TRANSPORTATION

SUPERSTRUCTURE DETAILS  
 SN 072 - 0056

SHEET NO. 2 OF 4 SHEETS

S.B.I. RTE.	SECTION	COUNTY	TOTAL SHEETS	SHEET NO.
8	(10C)BRR	PEORIA	24	11
CONTRACT NO. 68F66				
ILLINOIS FED. AID PROJECT				



**BAR LIST**  
**ONE BEAM ONLY**  
(For information only)

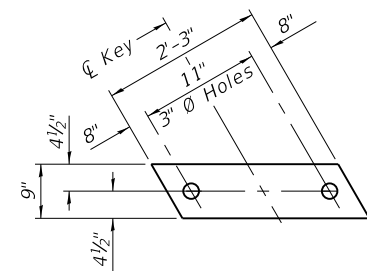
Bar	No.	Size	Length	Shape
A(E)	18	#4	2'-6"	—
A1(E)	36	#4	2'-9"	—
B(E)	6	#3	30'-6"	—
B1(E)	4	#3	10'-0"	—
S(E)	80	#4	7'-4"	U
S1(E)	8	#4	5'-10"	U
S2(E)	72	#4	6'-1"	U
S3(E)	12	#4	5'-1"	U
S4(E)	12	#4	4'-4"	U
U(E)	8	#5	4'-6"	C
U1(E)	4	#4	8'-4"	C

Note:  
Spacing of S(E) and S2(E) bars may be adjusted up to 4" in the immediate area of the transverse tie diaphragms to miss the block outs for the transverse ties.

Note:  
Place the number of strands specified in each row symmetrically about the centerline of beam in the permissible strand locations shown.

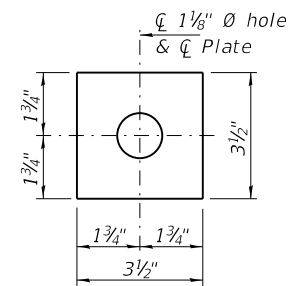
**MINIMUM BAR LAP**  
#3 bar = 1'-6"  
#4 bar = 1'-8"

Note:  
See sheet 4 of 4 for additional details and Bill of Material.

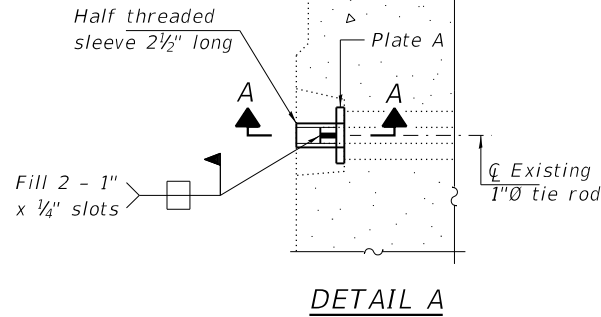


**FABRIC BEARING PAD**  
(East Abut. & Pier)

Notes:  
All bearing pads shall be 1/2" thick.

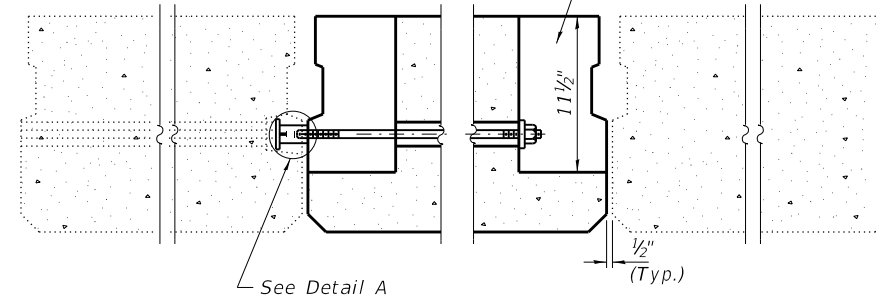


**PLATE A**  
(4 Required)

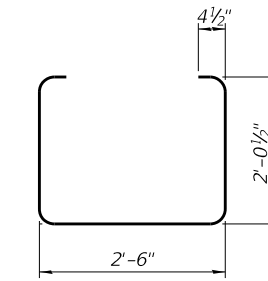


**DETAIL A**

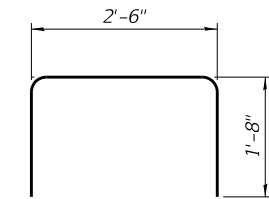
6" x 6" x 1 1/2" Blockout to be filled with non-shrink grout as specified in the special provision Concrete Deck Beams (Min. compressive strength at 7 days = 6000 psi) after beams have been installed. Cost shall be included in the cost of "Precast Prestressed Concrete Deck Beams (27" Depth).



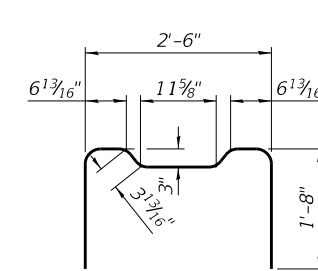
**TRANSVERSE TIE ASSEMBLY**



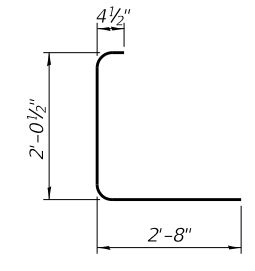
**BAR S(E)**



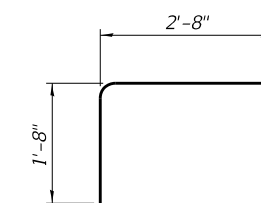
**BAR S1(E)**



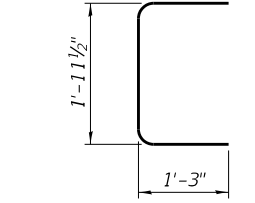
**BAR S2(E)**



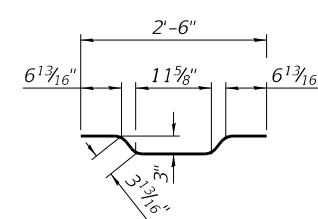
**BAR S3(E)**



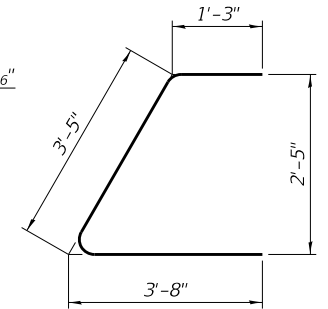
**BAR S4(E)**



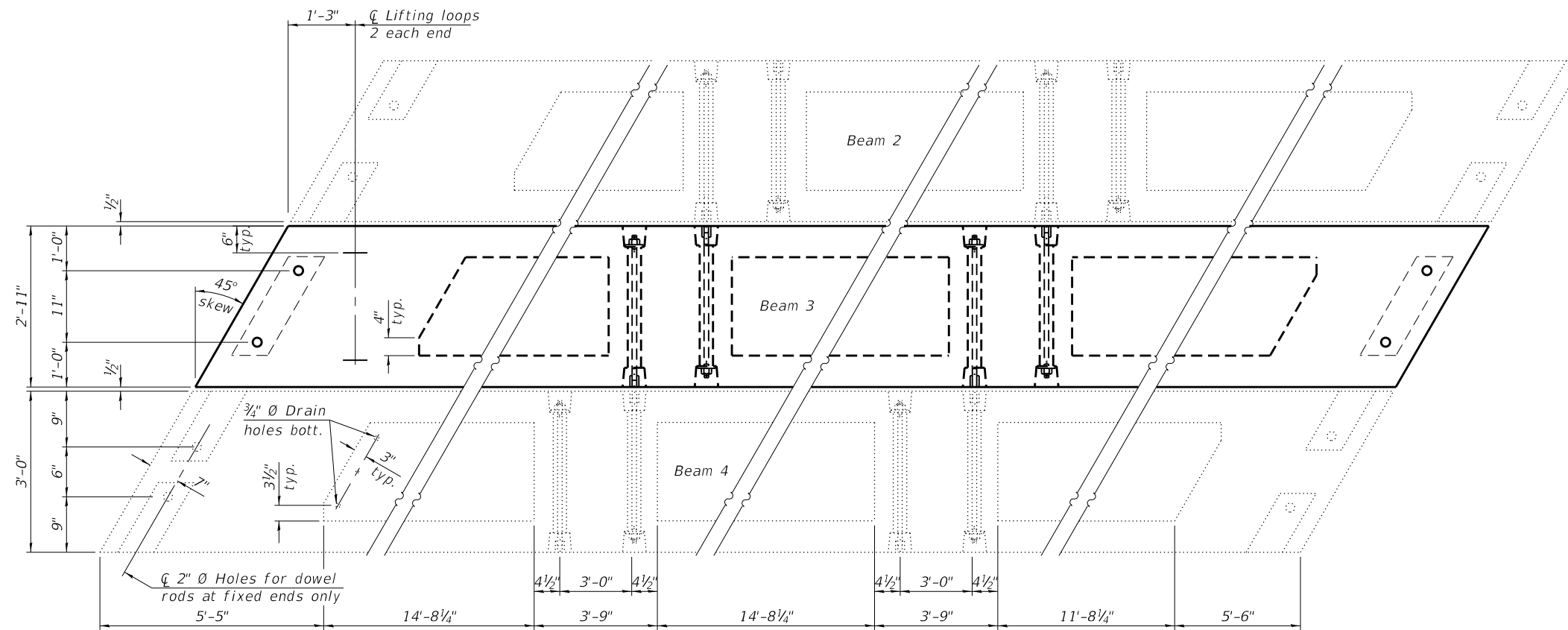
**BAR U(E)**



**BAR A1(E)**



**BAR U1(E)**

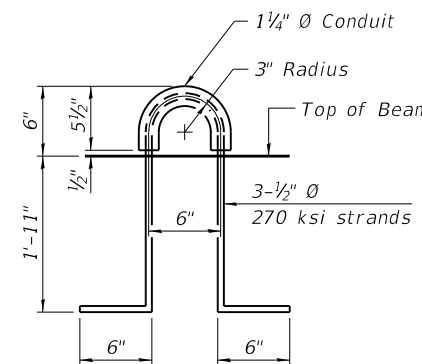


**PLAN VIEW - SPAN 1**

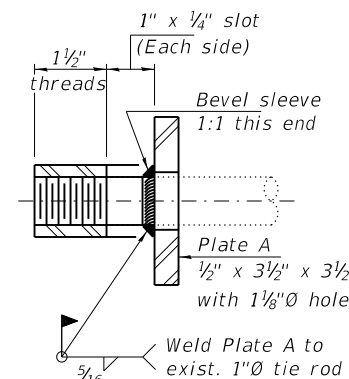
Note:  
Connect beams in pairs with the transverse tie configuration shown.

**NOTES**

Prestressing steel shall be uncoated high strength, low relaxation 7-wire strand, Grade 270. The nominal diameter shall be 1/2" and the nominal cross-sectional area shall be 0.153 sq. in. The 1" rods in the transverse tie assembly shall be tightened to a snug fit and the threads set. Pockets on exterior faces of bridge shall be filled with grout after transverse tie assembly is in place. Two 1/8" fabric adjusting shims of the dimensions of the exterior bearing pad shall be provided for each bearing pad location. A minimum 2 1/2" diameter lifting pin shall be used to engage the lifting loops during handling. Corrosion Inhibitor, per Article 1020.05(b)(10) and 1021.07 of the Standard Specifications, shall be used in the concrete for precast prestressed concrete deck beams. Compressive strength of prestressed concrete, f'c, shall be 6000 psi. Compressive strength of prestressed concrete at release, f'ci, shall be 5000 psi.



**LIFTING LOOP DETAIL**



**SECTION A-A**  
(4 Required)

**BILL OF MATERIAL**

Precast Prestressed Conc. Deck Bms. (27" depth)	Sq. Ft.	174
---	---------	-----

DESIGNED - JSB	EXAMINED - Timothy A. Daulton
CHECKED - ATH	ENGINEER OF STRUCTURAL SERVICES
DRAWN - Venkat Reddy	PASSED - Carl Poyner
CHECKED - JSB ATH	ENGINEER OF BRIDGES AND STRUCTURES

DATE - JUNE 26, 2020
REVISED -
REVISED -

**STATE OF ILLINOIS**  
**DEPARTMENT OF TRANSPORTATION**

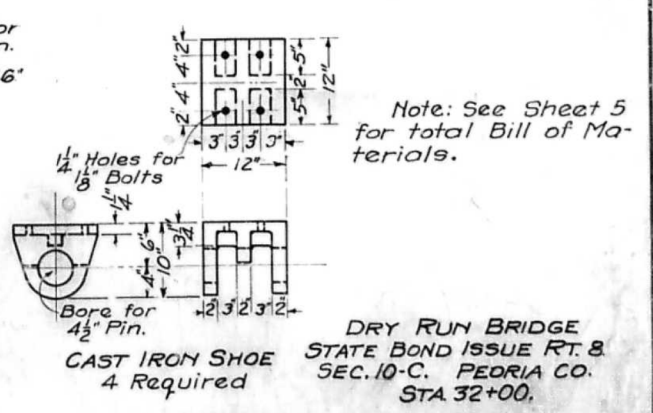
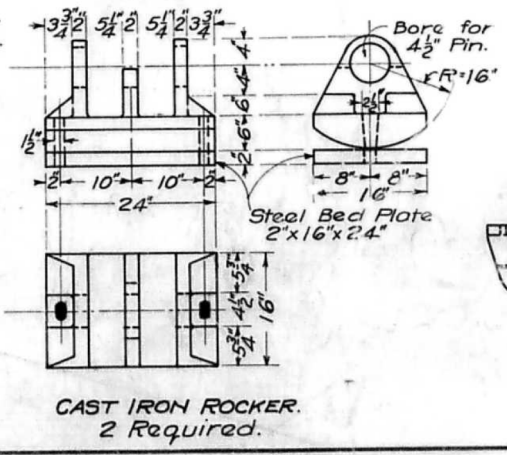
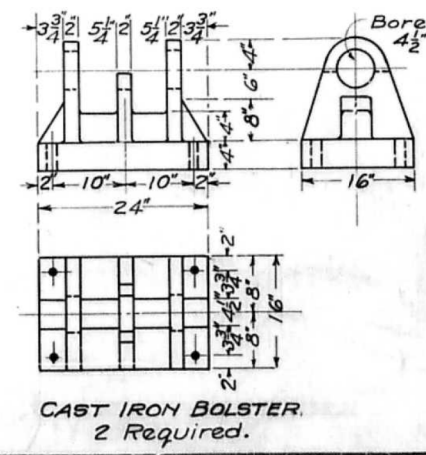
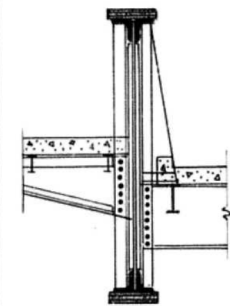
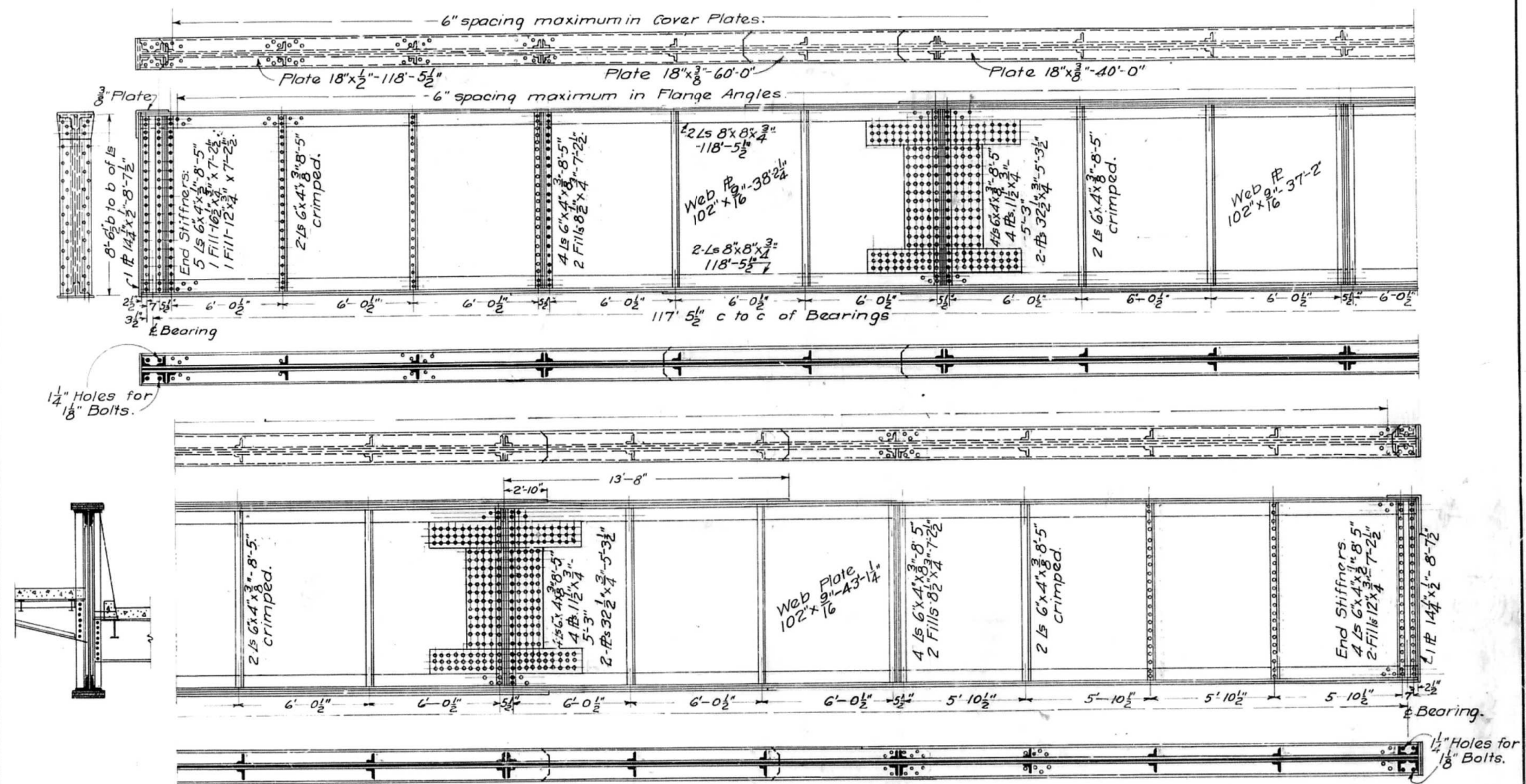
**27" x 35" PPC DECK BEAM DETAILS**  
**SN 072 - 0056**

SHEET NO. 4 OF 4 SHEETS

S.B.I. RTE.	SECTION	COUNTY	TOTAL SHEETS	SHEET NO.
8	(10C)BRR	PEORIA	24	13
CONTRACT NO. 68F66				
ILLINOIS FED. AID PROJECT				

STATE OF ILLINOIS  
DEPARTMENT OF PUBLIC WORKS & BUILDINGS  
DIVISION OF HIGHWAYS

BOND ISSUE	COUNTY	SEC.	TOTAL SHEETS	SHEET NO.	SHEET NO. / SHEETS
8	Peoria	10 B.C.	8	2	6 SHEETS



COMPUTED	<i>M.P.S.</i>	EXAMINED	<i>April 18, 1928</i>
CHECKED	<i>M.P.S.</i>	BRIDGE ENGINEER	<i>[Signature]</i>
DRAWN	<i>J.R.3</i>	ENGINEER OF DESIGN	<i>[Signature]</i>
CHECKED	<i>M.P.S.</i>	CITY HIGHWAY ENGINEER	<i>[Signature]</i>
ASSEMBLED			
CHECKED			

MODEL: Default  
 FILE: \\pc101\pub\rooms\dot\illinois.gov\pww\dot\Documents\DOT - Offices\Director - Projects\104\_68F66\CADD\31\CAD\31sheets\1\68F66-sh-structructure.dgn

USER NAME = SUSERS	DESIGNED -	REVISED -
PLOT SCALE = 1:100	DRAWN -	REVISED -
PLOT DATE = 5/15/2020	CHECKED -	REVISED -
	DATE -	REVISED -

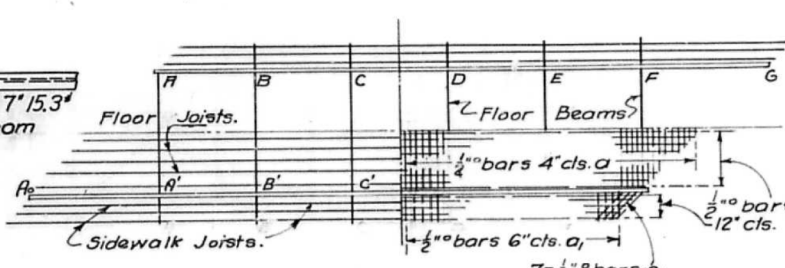
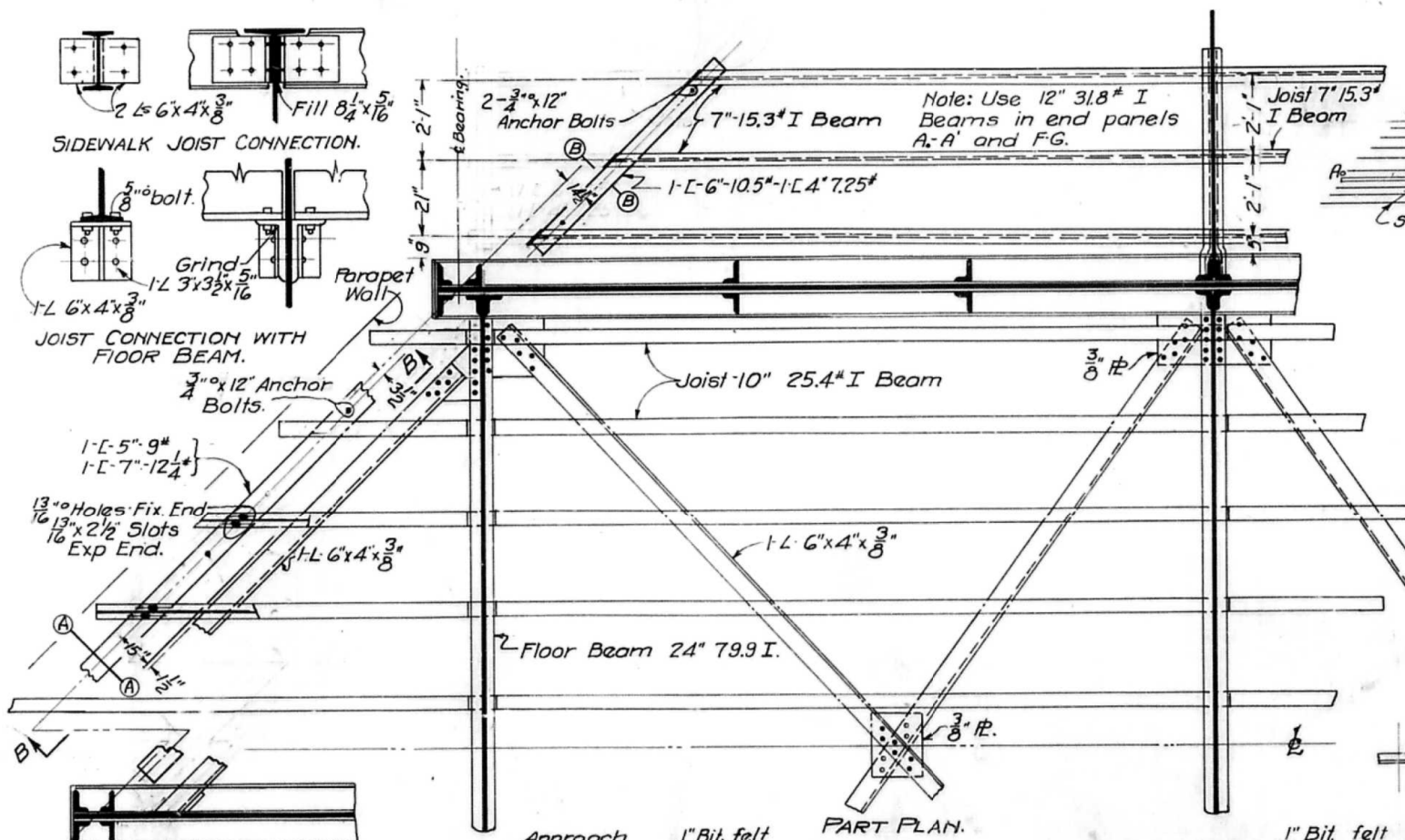
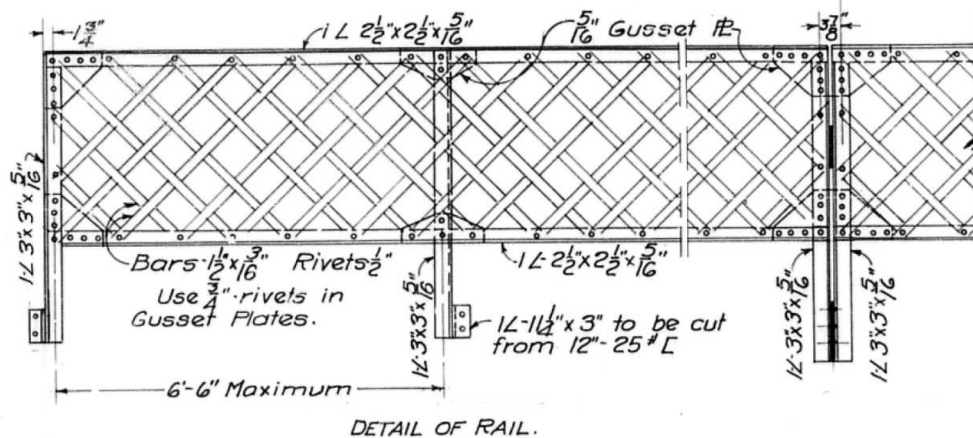
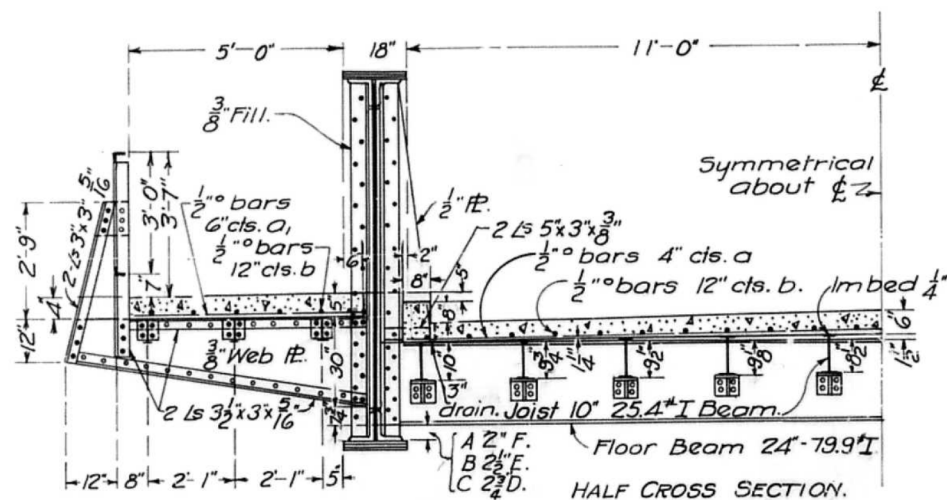
STATE OF ILLINOIS  
DEPARTMENT OF TRANSPORTATION

STRUCTURE PLANS (FOR INFORMATION ONLY)			
SCALE:	SHEET	OF SHEETS	STA. TO STA.

F.A.U. RTE.	SECTION	COUNTY	TOTAL SHEETS	SHEET NO.
6658	(10C)BRR	PEORIA	24	
CONTRACT NO. 68F66				
ILLINOIS FED. AID PROJECT				

STATE OF ILLINOIS  
DEPARTMENT OF PUBLIC WORKS & BUILDINGS  
DIVISION OF HIGHWAYS

BOND ISSUE ROUTE NO. COUNTY SEC. TOTAL SHEETS SHEET NO.  
8 Peoria 8c 8 3 SHEET NO. 2  
6 SHEETS



**BILL OF MATERIALS.**

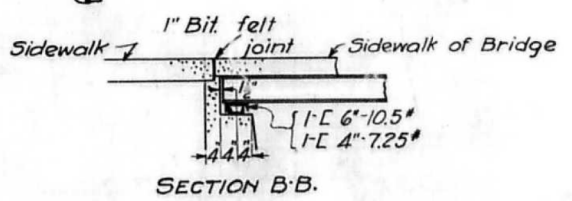
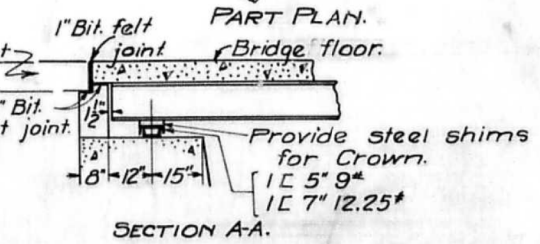
Bars	No	Size	Length
a	365	1/2"	22'-0"
a1	460	"	5'-3"
a2	28	"	7'-0"
b	170	"	26'-0"
Reinforcing Steel-Lbs.			10030
Concrete-Class X-Cu Yds			72.7
Structural Steel-Lbs			21120
Name Plate			1
C.I. Rockers etc.			3940

Class X concrete shall be used in floor and sidewalk. Proportions 1:2:3 1/2.  
Rivets 7/8", Holes 1 1/16" unless noted otherwise. Inspection by Illinois Division of Highways before painting.  
Paint one shop coat, two field coats. Field connections riveted except stringers.

VIEW B-B TO SHOW THICKNESS OF STEEL SHIMS.

COMPUTED	J.H. Bohm
CHECKED	M.P. Spurr
DRAWN	J.H. Bohm
CHECKED	M.P.S.
ASSEMBLED	
CHECKED	

EXAMINED April 18, 1925  
H. J. Bunch  
BRIDGE ENGINEER  
APPROVED  
CHIEF HIGHWAY ENGINEER



DRY RUN BRIDGE  
STATE BOND ISSUE RT. 8,  
SEC. 10-C. PEORIA CO.  
STA. 32+00.

MODEL: Default FILE: \\s:\pub\harron\dot\illinois.gov\pww\dot\Documents\DOT - Offices\Director - 4\Projects\BIDD - 68F66\CAD\Drawings\CD\Sheets\68F66-3c-struct\structure.dwg

USER NAME = SUSERS	DESIGNED -	REVISED -
PLOT SCALE = 1:100	DRAWN -	REVISED -
PLOT DATE = 5/15/2020	CHECKED -	REVISED -
	DATE -	REVISED -

STATE OF ILLINOIS  
DEPARTMENT OF TRANSPORTATION

STRUCTURE PLANS (FOR INFORMATION ONLY)	
SCALE:	SHEET OF SHEETS STA. TO STA.

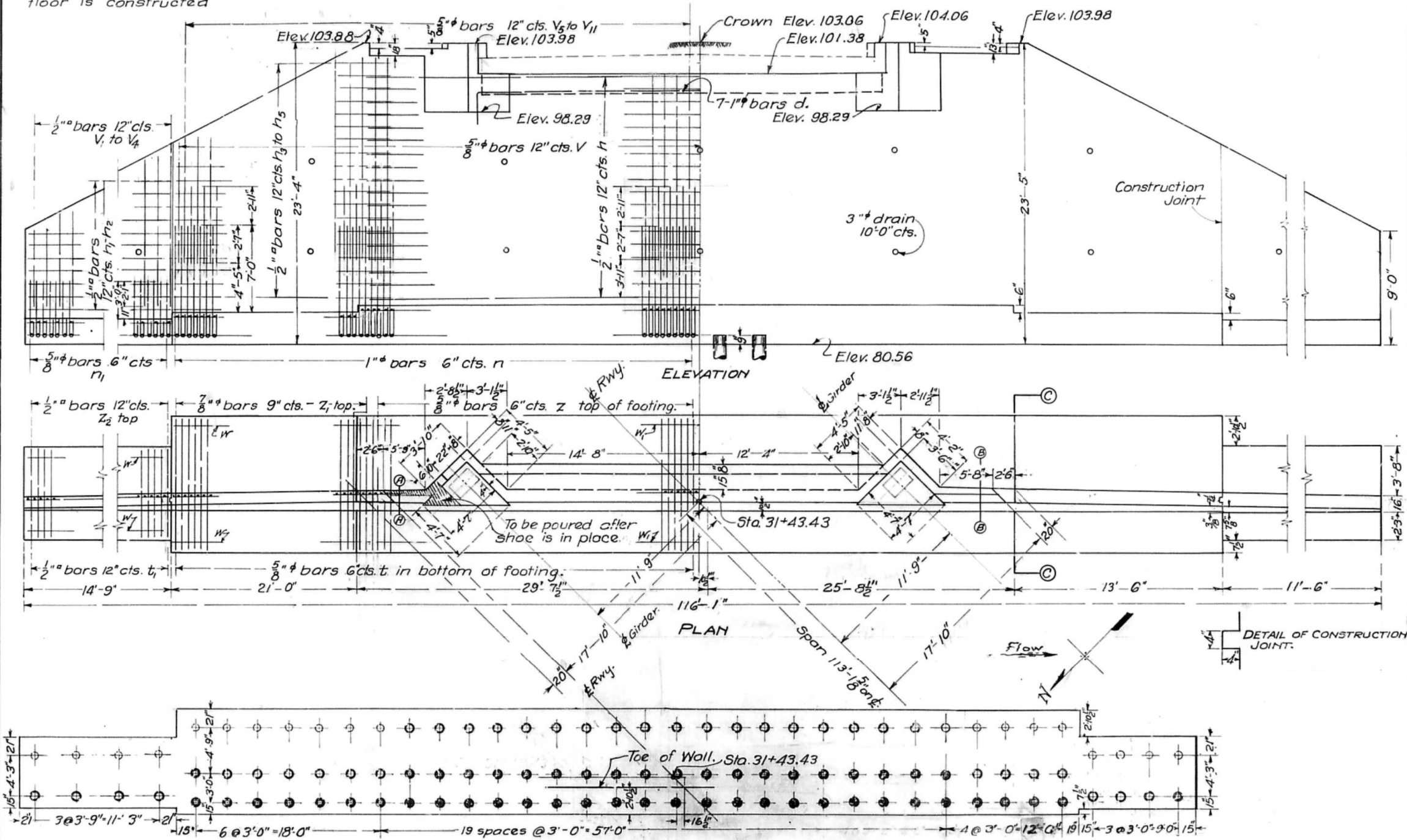
F.A.U. RTE.	SECTION	COUNTY	TOTAL SHEETS	SHEET NO.
6658	(10C)BRR	PEORIA	24	
CONTRACT NO. 68F66				
ILLINOIS FED. AID PROJECT				

STATE OF ILLINOIS  
DEPARTMENT OF PUBLIC WORKS & BUILDINGS  
DIVISION OF HIGHWAYS

BOND ISSUE ROUTE NO.	COUNTY	SEC.	TOTAL SHEETS	SHEET NO.
8	Peoria	8c	8	4

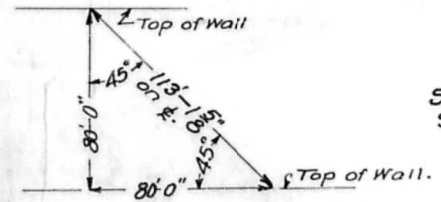
SHEET NO. 3  
6 SHEETS

B.M. #5 X on E. end of N. headwall of Concrete Culvert Sta. 37+14 Elev. 100.0  
Note: Build parapet walls when floor is constructed



- FILE LAYOUT.**
- ⊕ 10Ton Piles - 10" butt - 8" tip minimum. 19 Required. 285 Lin. Ft.
  - ⊕ 12Ton Piles - 12" butt - 10" tip minimum. 38 Required. 760 Lin. Ft.
  - ⊕ 15 Ton Piles - 12" butt - 10" tip minimum. 30 Required. 600 Lin. Ft.
  - ⊕ 17Ton Piles - 12" butt - 10" tip minimum. 19 Required. 380 Lin. Ft.

COMPUTED	J.R. Zah	EXAMINED	April 18, 1928
CHECKED	M.P. SUPPICK	BRIDGE ENGINEER	
DRAWN	J.R. Zah	PASSED	
CHECKED	M.P.S.	ENGINEER OF DESIGN	
ASSEMBLED		APPROVED	
CHECKED		CHIEF HIGHWAY ENGINEER	



DRY RUN BRIDGE.  
EAST ABUTMENT  
STATE BOND ISSUE RT. 8.  
SEC. B. PEORIA CO.  
STA. 32+00.

MODEL: Default  
FILE: Model: p:\pub\barroom.dwg  
PROJECT: D:\Illinois\gov\pww\DOT\Documents\DOT - Offices\District 4\Projects\DD4\_68F66\CADD\DWG\Sheet\68F66-shr-struct.dwg

USER NAME = SUSERS	DESIGNED -	REVISED -
PLOT SCALE = 1:100	DRAWN -	REVISED -
PLOT DATE = 5/15/2020	CHECKED -	REVISED -
	DATE -	REVISED -

STATE OF ILLINOIS  
DEPARTMENT OF TRANSPORTATION

STRUCTURE PLANS  
(FOR INFORMATION ONLY)

SCALE: SHEET OF SHEETS STA. TO STA.

F.A.U. RTE.	SECTION	COUNTY	TOTAL SHEETS	SHEET NO.
6658	(10C)BRR	PEORIA	24	
CONTRACT NO. 68F66				
ILLINOIS FED. AID PROJECT				

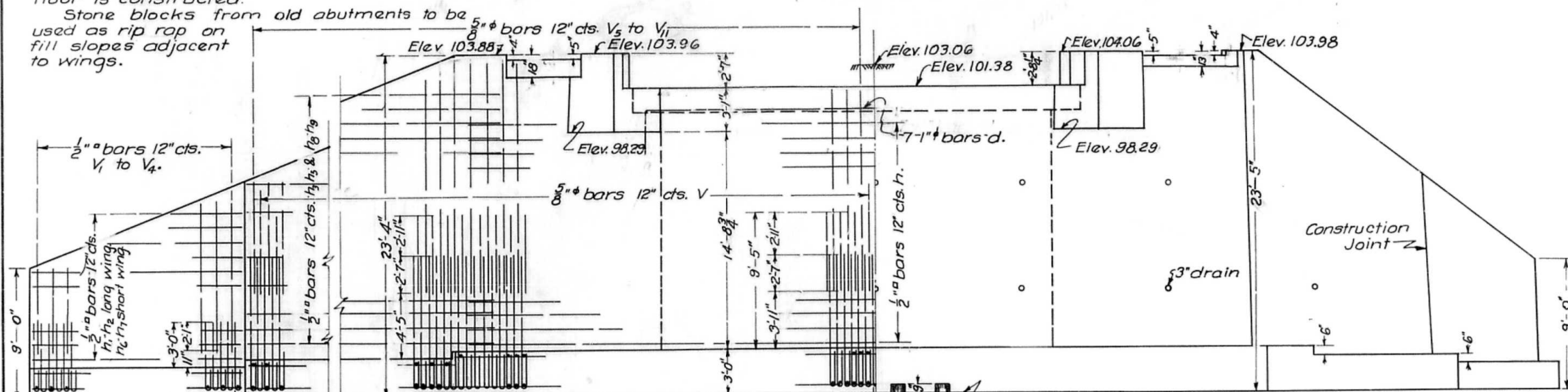


B.M. #5 "X" on E. end of N. headwall of Concrete Culvert Sta. 37+14 Elev. 100.00.  
Note: Build parapet walls when floor is constructed.

Stone blocks from old abutments to be used as rip rap on fill slopes adjacent to wings.

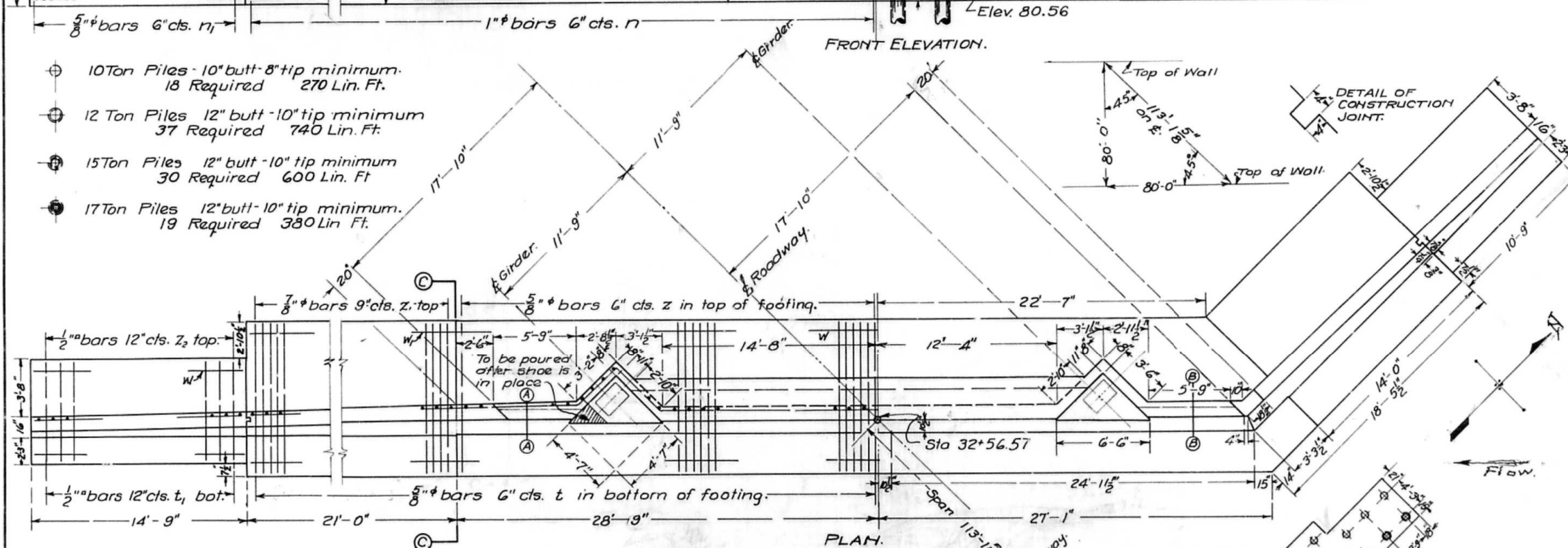
STATE OF ILLINOIS  
DEPARTMENT OF PUBLIC WORKS & BUILDINGS  
DIVISION OF HIGHWAYS

BOND ISSUE ROUTE NO.	COUNTY	SEC.	TOTAL SHEETS	SHEET NO.	SHEETS
8	Peoria	108	8	5	6



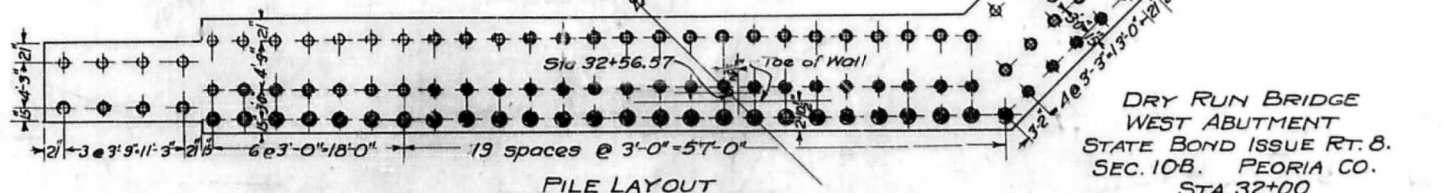
FRONT ELEVATION.

- ① 10 Ton Piles - 10" butt - 8" tip minimum. 18 Required 270 Lin. Ft.
- ② 12 Ton Piles 12" butt - 10" tip minimum 37 Required 740 Lin. Ft.
- ③ 15 Ton Piles 12" butt - 10" tip minimum 30 Required 600 Lin. Ft.
- ④ 17 Ton Piles 12" butt - 10" tip minimum. 19 Required 380 Lin. Ft.



PLAN.

DETAIL OF CONSTRUCTION JOINT.



PILE LAYOUT

Dry Run Bridge  
West Abutment  
State Bond Issue Rt. 8,  
Sec. 10B, Peoria Co.  
Sta. 32+00

STANDARD	COMPUTED		EXAMINED	APR 18 19 28
	CHECKED	M.P. SUPIRAK		PASSED
SPECIAL	DRAWN		APPROVED	
	CHECKED	M.P.S.		APPROVED
	ASSEMBLED			
	CHECKED			

STATE OF ILLINOIS  
DEPARTMENT OF TRANSPORTATION

STRUCTURE PLANS  
(FOR INFORMATION ONLY)

SCALE: SHEET OF SHEETS STA. TO STA.

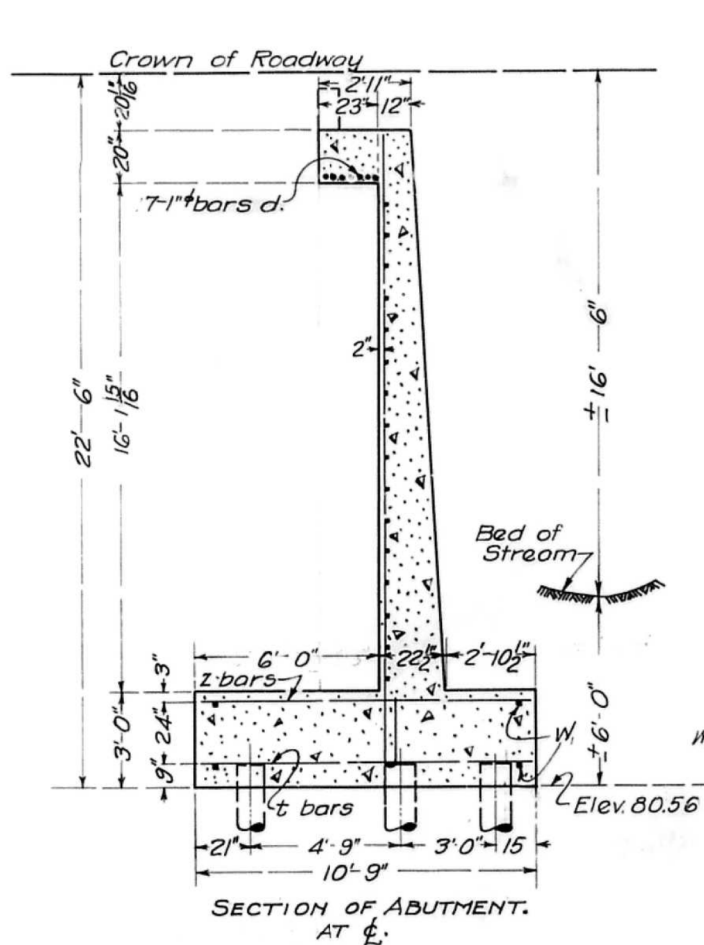
F.A.U. RTE.	SECTION	COUNTY	TOTAL SHEETS	SHEET NO.
6658	(10C)BRR	PEORIA	24	68F66

ILLINOIS FED. AID PROJECT

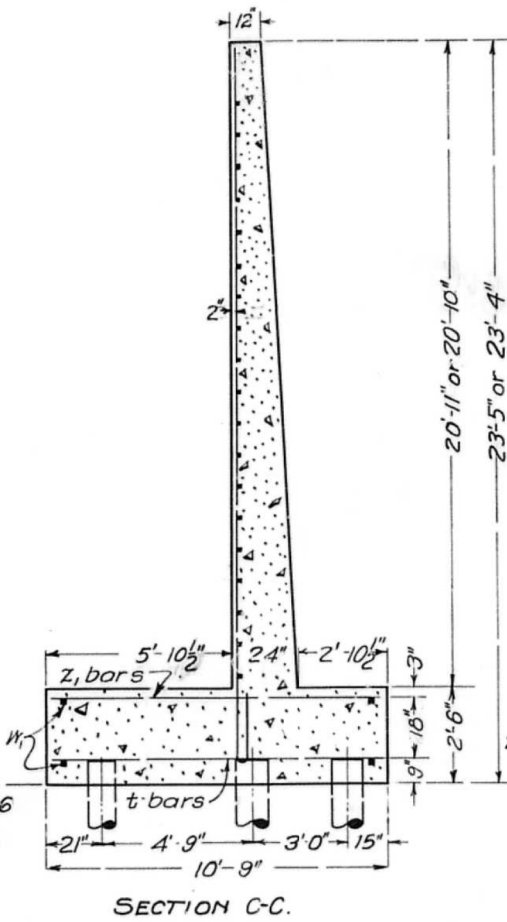
MODEL Default  
FILE Name: p:\pubwork\com.dwg\illinois.gov\pwwid\DOT\Documents\DOT Office\Director 4\Projects\104\_68F66\CADD\3d\CAD\sheet\68f66-5b-struct.dwg

STATE OF ILLINOIS  
DEPARTMENT OF PUBLIC WORKS & BUILDINGS  
DIVISION OF HIGHWAYS

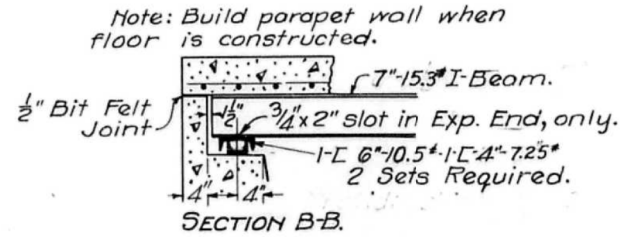
BOND ISSUE NO.	COUNTY	SEC.	TOTAL SHEETS	SHEET NO.	SHEET NO.
8	Peoria	10	8	6	6 SHEETS



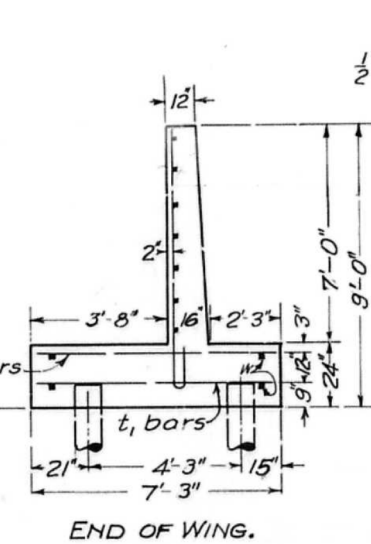
SECTION OF ABUTMENT AT ELEV. 80.56



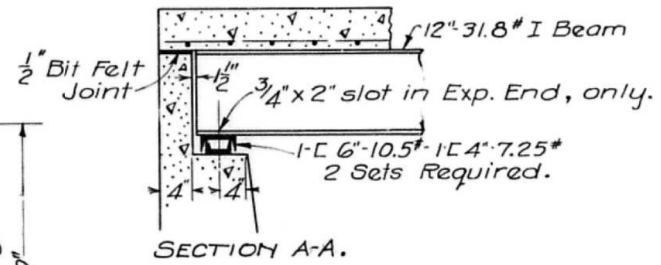
SECTION C-C



SECTION B-B



END OF WING



SECTION A-A

Stone blocks from old abutments to be used as rip rap on fill slopes adjacent to wings. Cost included in Cl. A. Conc. Old bridge; Pony truss span 72 Ft. shall be removed by Sec. B contractor. Approaches to be graded by Sec. B contractor. Approximately 708 Cu. Yds of material required, and it may be taken from creek bed near bridge site.

**EAST ABUTMENT - BILL OF MATERIALS.**

Bars	No.	Size	Length	Bars	No.	Size	Length	
V	96	3/8"	5'-6"	n	192	1"	10'-9"	
V1	6	"	6'-0"	n1	50	5/8"	6'-0"	
V2	6	"	7'-6"	t	186	"	10'-6"	
V3	7	"	9'-0"	t1	26	1/2"	7'-0"	
V4	7	"	10'-6"	d	7	1"	36'-6"	
V5	5	"	8'-0"	Z	110	3/8"	10'-6"	
V6	7	"	9'-6"	Z1	48	1/8"	10'-6"	
V7	7	"	11'-0"	Z2	30	1/2"	7'-0"	
V8	5	"	12'-6"					
V9	7	"	14'-0"	W	4	1/2"	14'-6"	
V10	48	1/2"	21'-6"	W1	16	"	24'-0"	
V11	8	"	14'-6"	W2	4	"	11'-0"	
V12	3	"	7'-0"					
V13	24	"	19'-0"					
V14	3	"	12'-0"					
V15	3	"	5'-6"					
V16	8	"	10'-6"					
V17	3	"	5'-6"					
V18	3	"	14'-0"					
V19	3	"	9'-0"					
V20	30	5/8"	15'-6"					
V21	35	"	13'-0"					
				Reinforcing Steel-Lbs.	15190			
				Concrete-Class A-Cu.Yds.	2253			
				Piles-10Ton-Lin.Ft.	285			
				Piles-12Ton-Lin.Ft.	760			
				Piles-15Ton-Lin.Ft.	600			
				Piles-17Ton-Lin.Ft.	380			

**WEST ABUTMENT - BILL OF MATERIALS.**

Bars	No.	Size	Length	Bars	No.	Size	Length	
V	96	3/8"	5'-6"					
V1	6	"	6'-0"					
V2	6	"	7'-6"					
V3	7	"	9'-0"	d	7	1"	36'-6"	
V4	7	"	10'-6"					
V5	5	"	8'-0"	n	192	1"	10'-9"	
V6	7	"	9'-6"	n1	50	5/8"	6'-0"	
V7	7	"	11'-0"	t	186	"	10'-6"	
V8	5	"	12'-6"	t1	26	1/2"	7'-0"	
V9	7	"	14'-0"	Z	103	3/8"	10'-6"	
V10	48	1/2"	21'-6"	Z1	48	1/8"	10'-6"	
V11	8	"	14'-6"	Z2	26	1/2"	7'-0"	
V12	3	"	7'-0"					
V13	24	"	19'-0"	W	4	1/2"	14'-6"	
V14	3	"	12'-0"	W1	16	"	24'-0"	
V15	3	"	5'-6"	W2	4	"	10'-6"	
V16	8	"	10'-6"					
V17	3	"	5'-6"					
V18	3	"	14'-0"					
V19	3	"	9'-0"					
V20	30	5/8"	15'-6"					
V21	35	"	13'-0"					
				Reinforcing Steel-Lbs.	15070			
				Concrete-Class A-Cu.Yds.	2267			
				Piles-10Ton-Lin.Ft.	270			
				Piles-12Ton-Lin.Ft.	740			
				Piles-15Ton-Lin.Ft.	600			
				Piles-17Ton-Lin.Ft.	380			

**TOTAL BILL OF MATERIALS.**

	Sec B	Sec C	Totals
Concrete-Class A-Cu.Yds.	4520		4520
Concrete-Class X-Cu.Yds.		745	745
Structural Steel-Lbs.		211120	211120
Reinforcing Steel-Lbs.	30260	10030	40290
C. I. Rockers-Lbs.		3940	3940
Name Plate		1	1
Temporary Bridge	1		1
Temporary Culvert	1		1
Piles-10Ton-Lin.Ft.	555		555
Piles-12Ton-Lin.Ft.	1500		1500
Piles-15Ton-Lin.Ft.	1200		1200
Piles-17Ton-Lin.Ft.	760		760
Grading-Approaches-Cu.Yds.	708		708

COMPUTED - J.R. John  
 CHECKED - M.P. SUPPRAK  
 DRAWN - J.H.S.  
 CHECKED - M.P.S.  
 ASSEMBLED -  
 CHECKED -

EXAMINED April 18, 1928  
 J.T. Bruner BRIDGE ENGINEER  
 PASSED H.L. ... ENGINEER OF DESIGN  
 APPROVED [Signature] CHIEF HIGHWAY ENGINEER

Class A concrete shall be used in abutments  
 Proportions: 1:2 1/2:4.  
 Reinforcing steel shall be wired securely in place before concrete is poured.

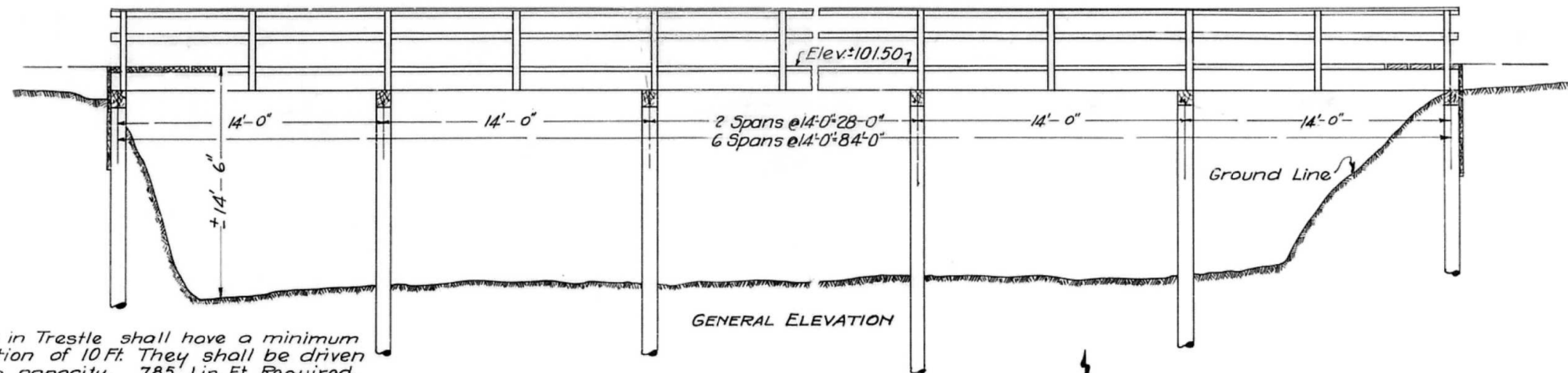
DRY RUN BRIDGE  
 BILL OF MATERIALS-DETAILS.  
 STATE BOND ISSUE RT. 8.  
 SEC. 10-B PEORIA CO  
 STA. 32+00

MODEL: Default  
 FILE: BOND ISSUE PLAN PEORIA COUNTY ILLINOIS DIVISION OF HIGHWAYS  
 PROJECT: BOND ISSUE PLAN PEORIA COUNTY ILLINOIS DIVISION OF HIGHWAYS  
 SHEET: 6 SHEETS  
 DATE: 5/15/2020

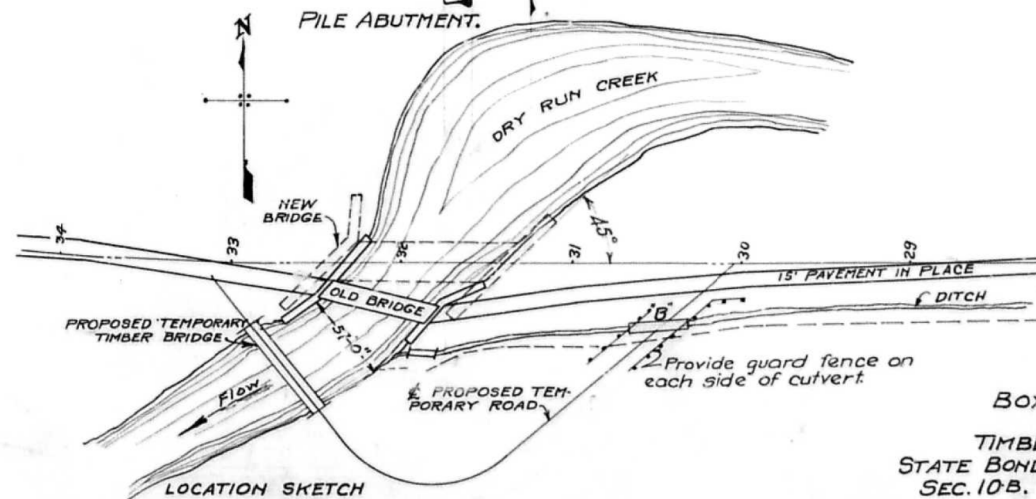
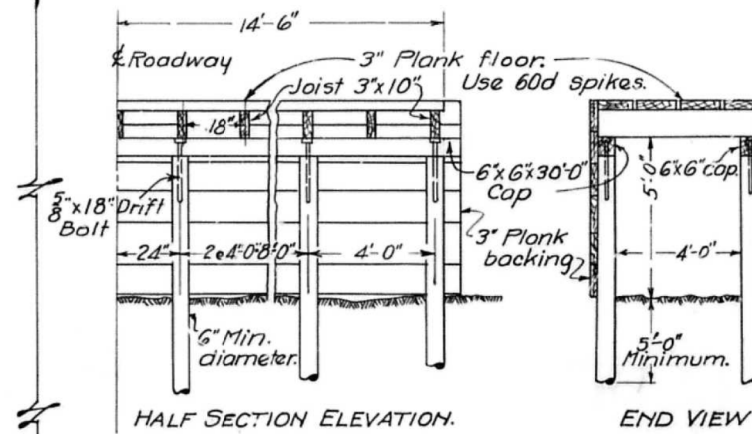
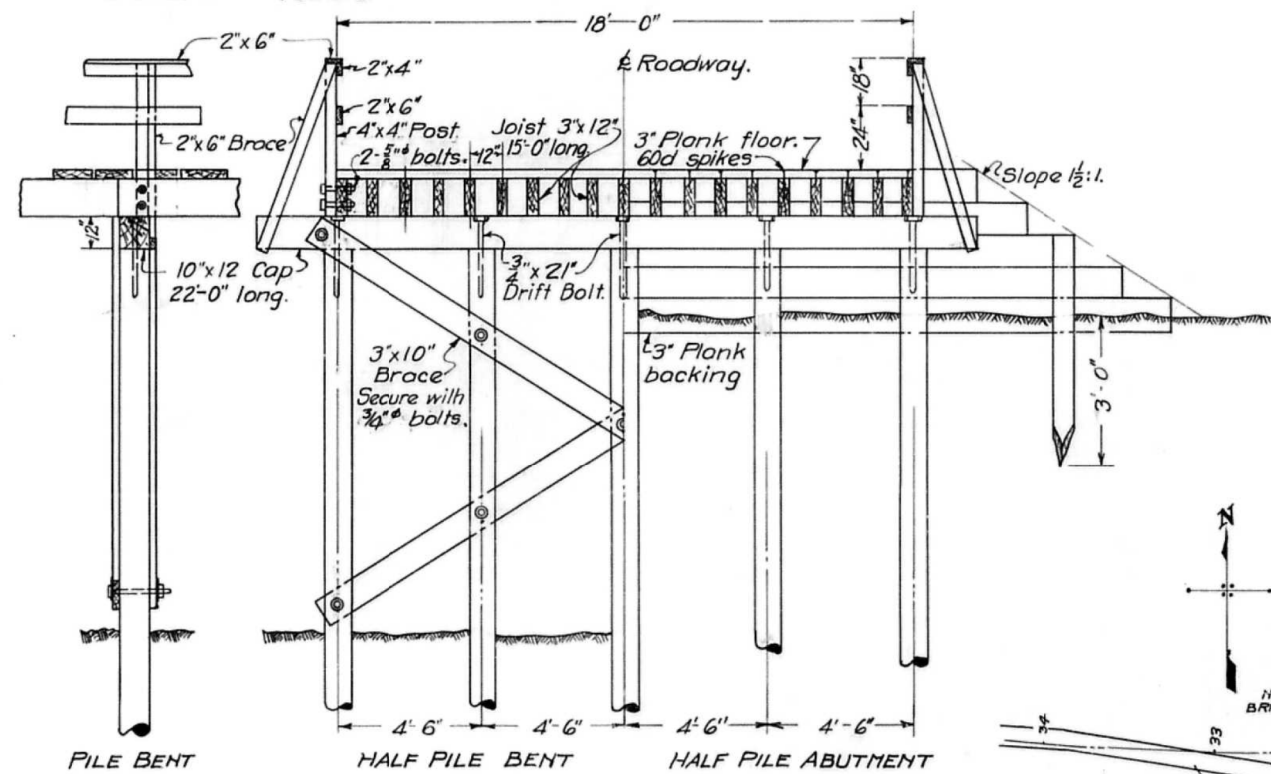
STATE OF ILLINOIS  
DEPARTMENT OF PUBLIC WORKS & BUILDINGS  
DIVISION OF HIGHWAYS

BOND ISSUE ROUTE NO.	COUNTY	SEC.	TOTAL SHEETS	SHEET NO.	SHEET NO.
8	Peoria	10	8	7	6 SHEETS

B.M. # 5 "X" on E. end of N. headwall of Concrete Culvert Sta. 37+14 Elev. 100.00.



Piles in Trestle shall have a minimum penetration of 10 Ft. They shall be driven to 10 Ton capacity. 785' Lin. Ft Required.  
Approximate Quantities in Trestle and Culvert:  
Lumber 15.9 M ft. b. m.  
Hardware 760 Lbs.



BOX CULVERT AND  
TIMBER TRESTLE  
STATE BOND ISSUE ROUTE 8  
SEC. 10 B. PEORIA CO.  
STA. 32+00.

COMPUTED	APR 18, 1928	EXAMINED	APR 18, 1928
CHECKED	M.P.S.	CHECKED	M.P.S.
DRAWN	M.P.S.	DRAWN	M.P.S.
CHECKED	M.P.S.	CHECKED	M.P.S.
ASSEMBLED		APPROVED	PAUL H. [Signature]
CHECKED			CHIEF HIGHWAY ENGINEER

USER NAME = SUSERS	DESIGNED -	REVISED -
PLOT SCALE = 1:100	DRAWN -	REVISED -
PLOT DATE = 5/15/2020	CHECKED -	REVISED -
	DATE -	REVISED -

STATE OF ILLINOIS  
DEPARTMENT OF TRANSPORTATION

STRUCTURE PLANS  
(FOR INFORMATION ONLY)

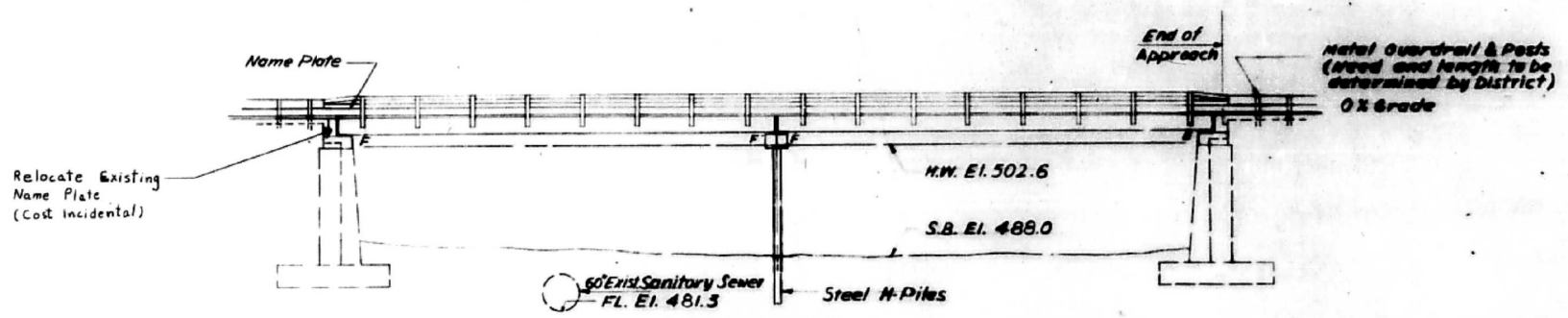
SCALE: SHEET OF SHEETS STA. TO STA.

F.A.U. RTE.	SECTION	COUNTY	TOTAL SHEETS	SHEET NO.
6658	(10C)BRR	PEORIA	24	6
CONTRACT NO. 68F66				

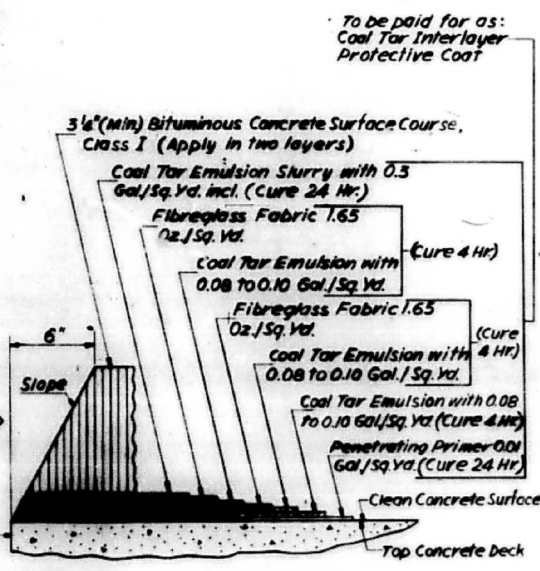
ILLINOIS FED. AID PROJECT

B.M. - Chiseled "X" in square, top of South Wingwall of West Abut. of exist. Bridge El. 507.23  
 Exist Structure - Built in 1928 as S.B.I. Rte. 8 Sec. 10 C-1 Sta. 52+00. One span steel thru girder, closed abutments

PROJECT NO.	SECTION	SHEET	TOTAL SHEETS	DATE
6658	10C-1	PEORIA	24	4
FOR RECORD NO. 1				



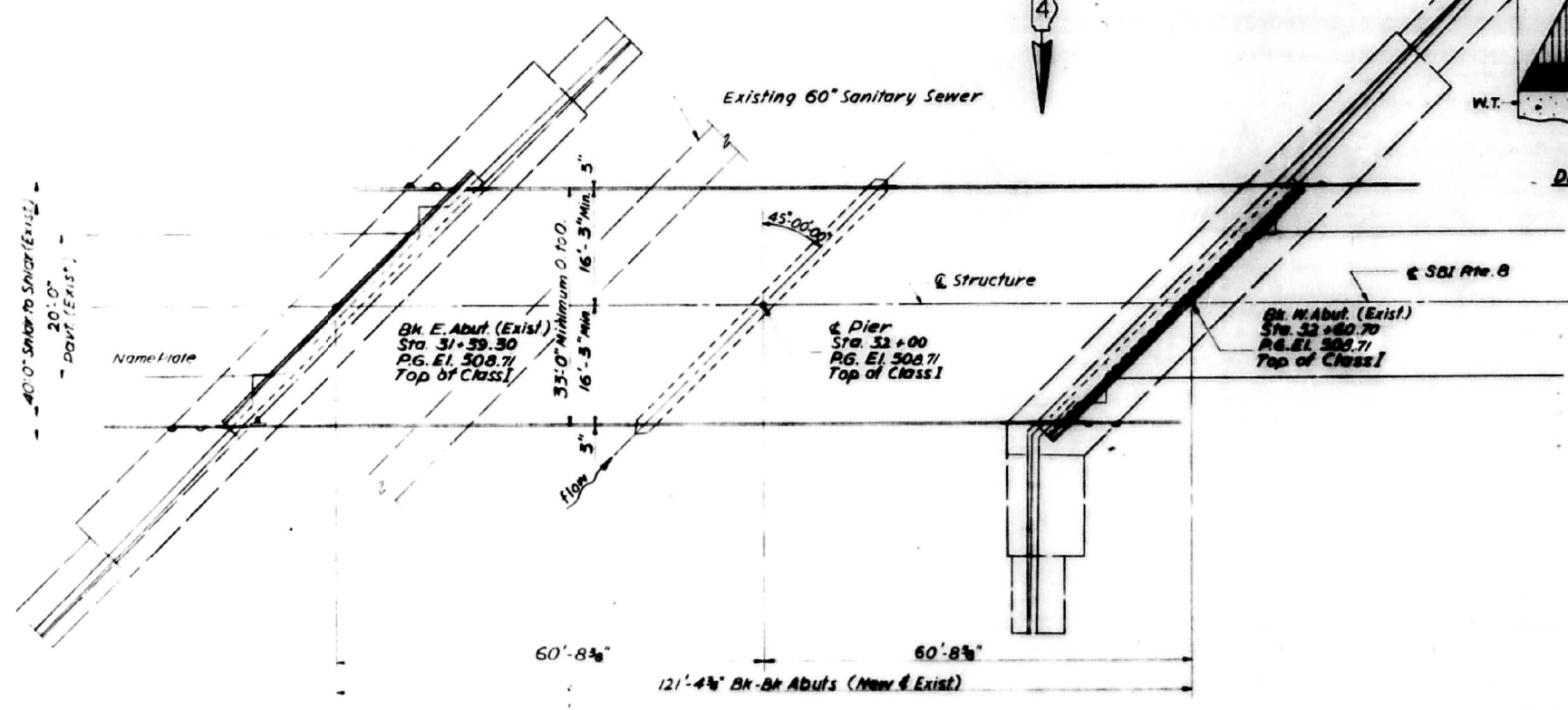
ELEVATION



DETAIL OF DECK SURFACING

**GENERAL NOTES**

All reinforcement bars shall be lapped 24 diameters unless otherwise shown.  
 It shall be the responsibility of the contractor to verify all dimensions and conditions existing in the field prior to construction and ordering of materials.  
 An alternate strand pattern using Extra High Strength prestressing strand (270 K.S.I.) is permitted.  
 Expansion bolts shall consist of self drilling expansion anchors and 3/4" hooked bolts, and shall extend a minimum of 9" into the new concrete.  
 Limits of Coal Tar Interlayer Protective Coat shall be one foot beyond end of deck beams and out to out of deck.  
 The contractor shall drive 1 steel Test Pile in a Permanent Location at Pier as directed by the Engineer before ordering the remainder of Piles.  
 Shoulder transition to Wingwall shall be shaped with broken concrete. Cost incidental.



PLAN

**TOTAL BILL OF MATERIAL**

ITEM	UNIT	SUPER.	SUB.	TOTAL
Bituminous Concrete Surface Course, Class I	Ton	82		82
Removal of Existing Superstructures	Each	1		1
Concrete Removal	Cu Yd		22	22
Expansion Bolts 3/4"	Each	80		80
Class X Concrete	Cu Yd		45.7	45.7
Precast Prestressed Concrete Deck Beam 27" Depth	Sq Ft.	5886		5886
Reinforcement Bars	Pound		4760	4760
Name Plates	Each	1		1
Coal Tar Interlayer Protective Coat	Sq Yd.	450		450
Pavement Removal & P.C.C. Replacement, Type II(10)	Sq Yd.	13		13
Steel Rolling, Type N	Lin. Ft.	259		259
Neoprene Expansion Joint (2')	Lin. Ft.	47		47
Steel Piles (HP10x42)	Lin. Ft.		571	571
Test Pile Steel (HP10x42)	Each		1	1

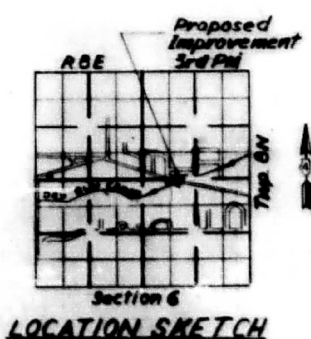
DESIGNED	M.O.J.
CHECKED	M.A.Y.
DRAWN	M.O.J.
CHECKED	

**WATERWAY INFORMATION**  
 Drainage Area ..... 7202 Acres  
 Character - Hilly  
 Present Opening ..... 1130 Sq. Ft.  
 Required Opening ..... 1030 Sq. Ft.  
 Proposed Opening ..... 1120 Sq. Ft.  
 Q(50) = 6000 cfs.  
 Created Head = 2.61

**DESIGN STRESSES**  
 FIELD UNITS  
 f<sub>c</sub> = 1800 psi  
 f<sub>s</sub> = 20000 psi (Reinf.)  
 n = 10

**PRECAST PRESTRESSED UNITS**  
 f<sub>c</sub> = 5000 psi  
 f<sub>ci</sub> = 4000 psi  
 f<sub>s</sub> = 248,000 psi - 3/8" Strand  
 f<sub>si</sub> = 173,600 psi - 3/8" Strand

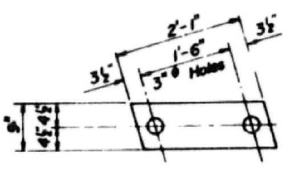
**DESIGN SPECIFICATIONS**  
 1965 AASHTO as applicable  
 LOADING HS 20-44



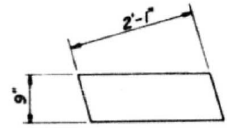
**GENERAL PLAN & ELEVATION**  
 SBI RTE. 8 OVER DRY RUN CREEK  
 SBI ROUTE 8 SEC. 10 C-1  
 PEORIA COUNTY  
 STATION 32+00

Rev Class X Conc from 96 cu yds to 45.7 cu yds., Reinf. Bars from 8510# to 4760#  
 Steel Piles (HP10x42) from 715 Lin. Ft. to 571 Lin. Ft. 9-29-72 D.D.

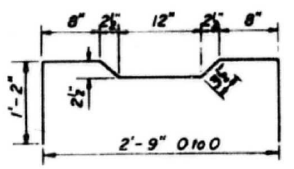
PROJECT NO.	SECTION	COUNTY	TOTAL SHEETS	SHEET NO.
8	10C-I	PEORIA	11	5



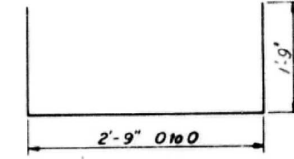
FABRIC BEARING PAD  
E. ABUT. & PIER



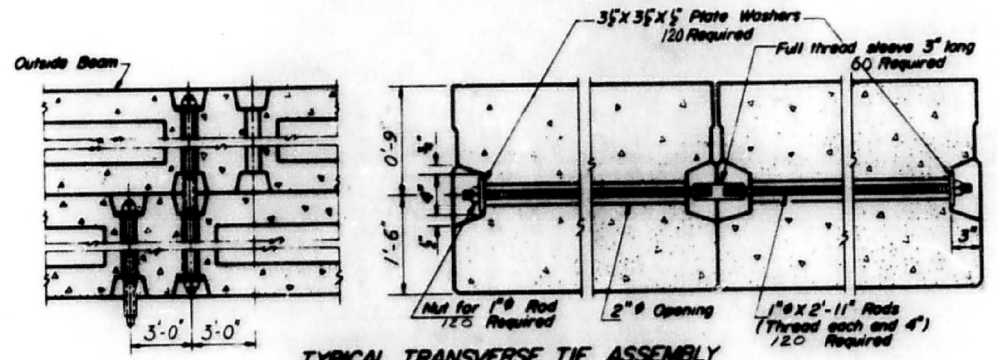
GRAPHITED ASBESTOS BEARING PAD  
W. ABUT.



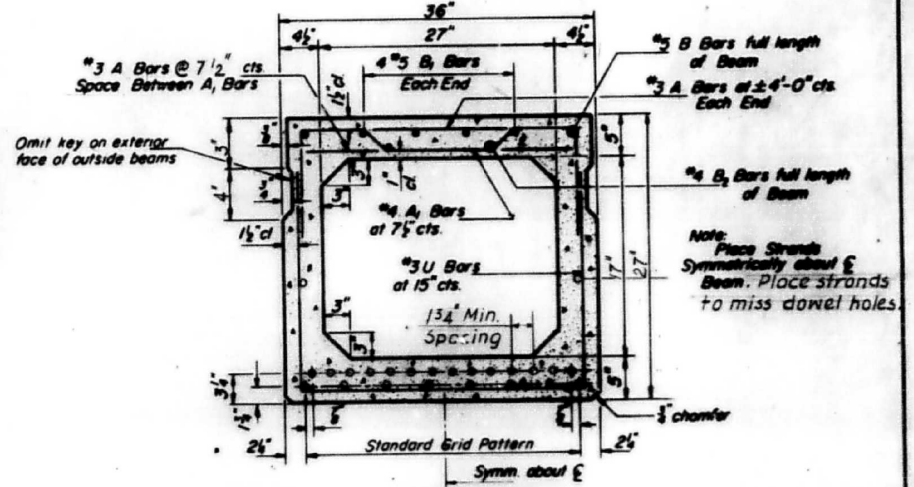
A<sub>1</sub> BAR



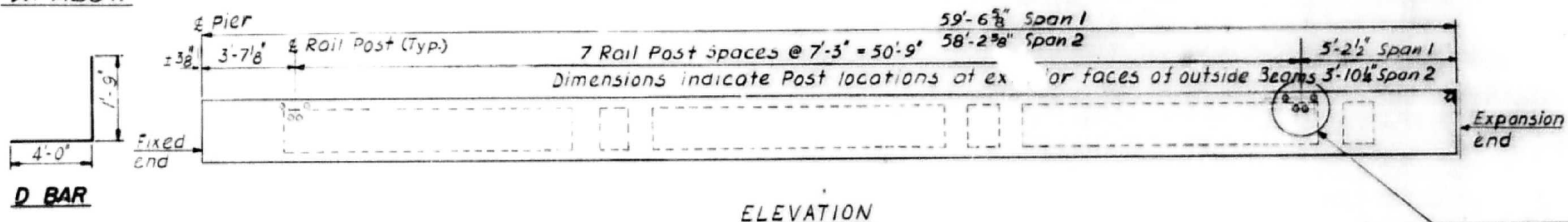
U & U BAR



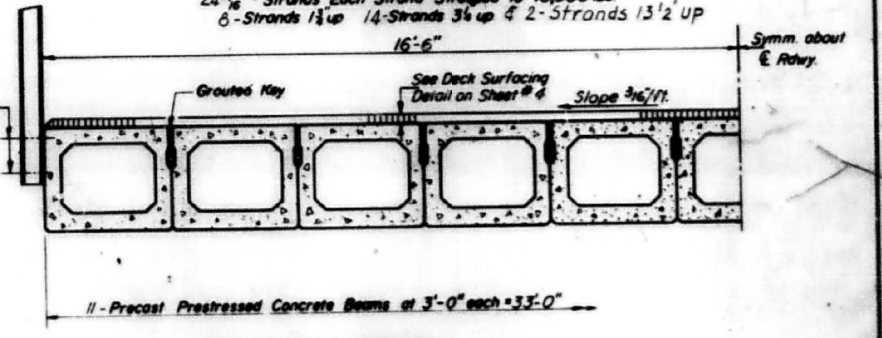
TYPICAL TRANSVERSE TIE ASSEMBLY



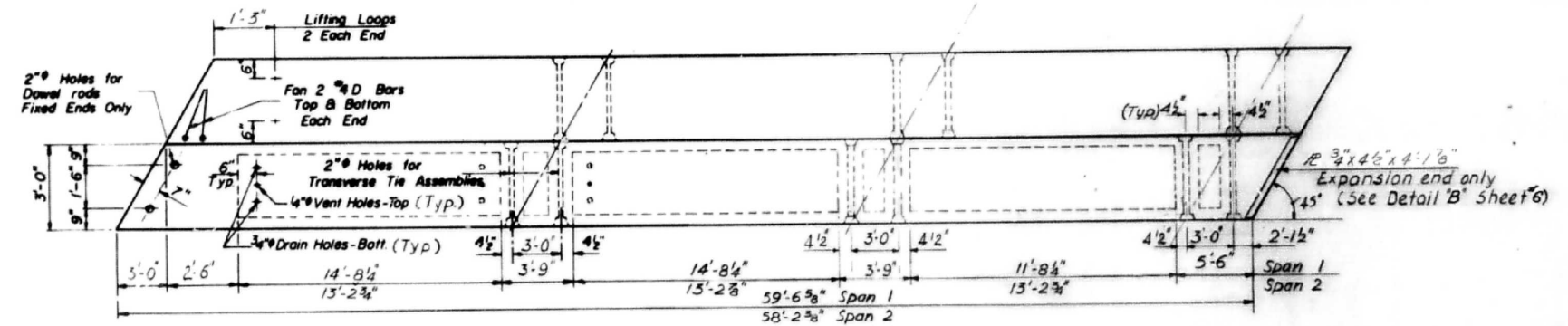
TYPICAL SECTION



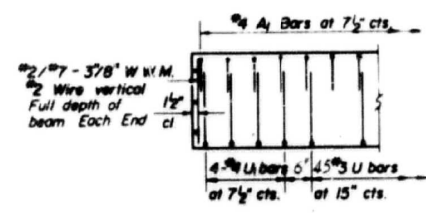
ELEVATION



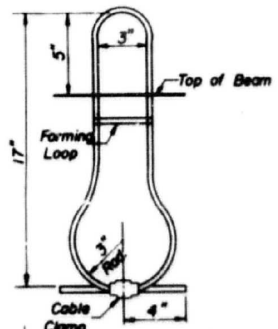
HALF CROSS SECTION



PLAN



END ELEVATION



LIFTING LOOP DETAIL

DESIGNED	H.A.P.
CHECKED	M.N.Y.
DRAWN	H.A.P.
CHECKED	M.N.Y.

PD 3-6-11-10-68 Rev 5-20-68  
SR-5 (5-15-71)

GENERAL NOTES

Prestressing steel shall be non-galvanized high strength, stress-relieved 7-wire strand. The nominal diameter shall be 7/8" and the nominal cross-sectional area shall be 0.109 sq. in. Lifting loops shall be 5/8" diameter, 6x19 class wire rope with fiber core and shall have a minimum ultimate tensile strength of 33,000 lbs. The 1" rods in the transverse tie assembly shall be tightened to a snug fit and the threads set. Pockets that receive transverse tie bar on outside beam shall be filled with grout after transverse tie assembly is in place. Longitudinal shear keys shall be packed with a very dry mix of 2-1 sand and P.C. mortar. After beams have been erected, holes for the dowel anchors shall be drilled into the sub-structure and the anchor dowels shall be grouted in place. After fabrication the transverse tie assemblies (tie rods, nuts, washers and sleeves) shall be hot-dipped galvanized in accordance with A.S.T.M. Designation A153. Cost of reinforcement and accessories cast into the beams, of bearing pads, of 3 1/2 x 4 1/2 x 1/8" and of grouting longitudinal shear keys is included in unit price bid for "Precast Prestressed Concrete Deck Beams, 21" Depth." Steel for dowel rods shall be A.S.T.M. A306 or A.S.T.M. A615 bars. Transverse tie rods shall be A.S.T.M. A306 Grade 70-80.

Note  
For section thru. Abut. see Sheet No. 3

One Unit  
Bar Schedule

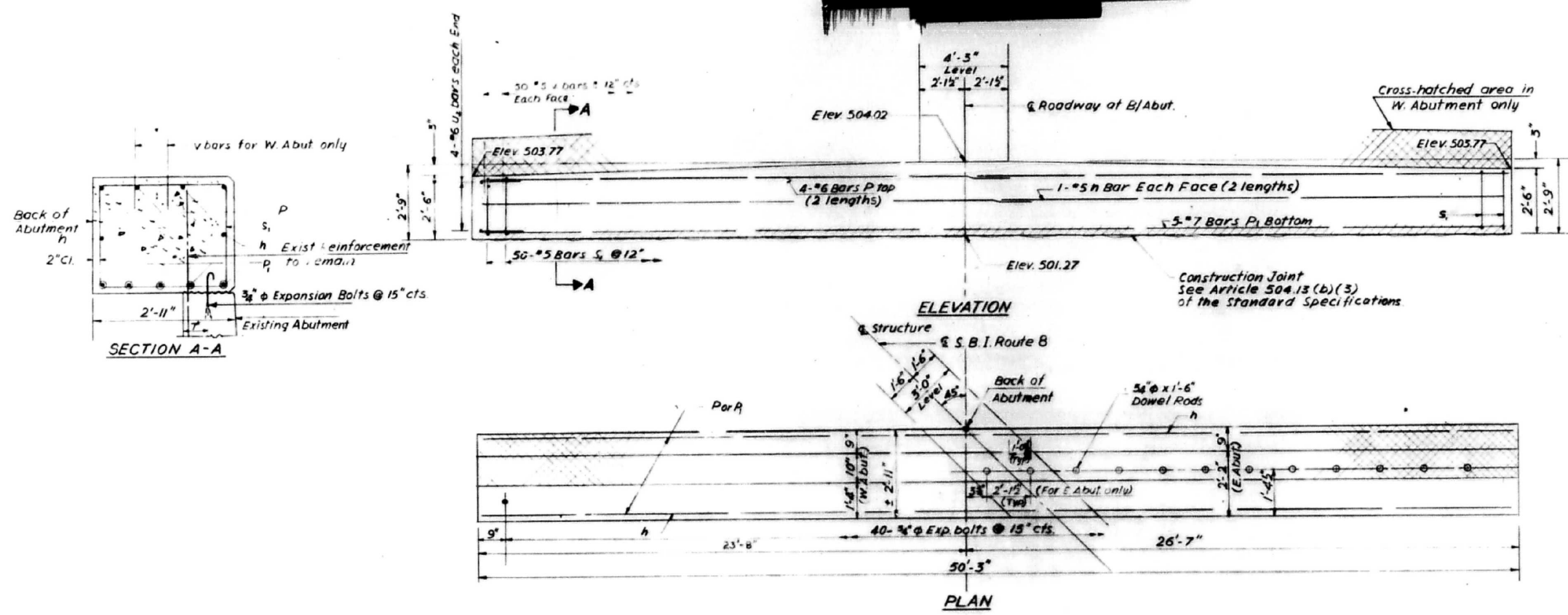
Bar	No.	Size	Length	Shape
A <sub>1</sub>	36	#4	3'-9"	U
A	95	#3	2'-9"	U
B	6	#5	59'-9"	U
B <sub>1</sub>	6	#5	12'-0"	U
B <sub>2</sub>	2	#4	59'-9"	U
D	6	#4	3'-9"	U
U	45	#3	6'-3"	U
U <sub>1</sub>	6	#4	6'-3"	U

Bill of Materials

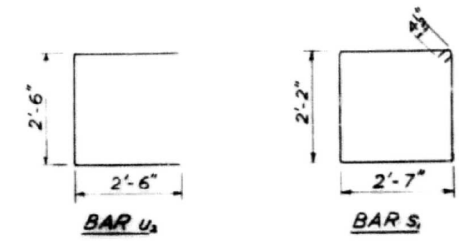
Precast Prestressed Concrete Deck Beams	3886
---	------

SUPERSTRUCTURE DETAILS

S.B.I. RTE. 8 SEC. 10 C-1  
PEORIA COUNTY  
STA 32+00

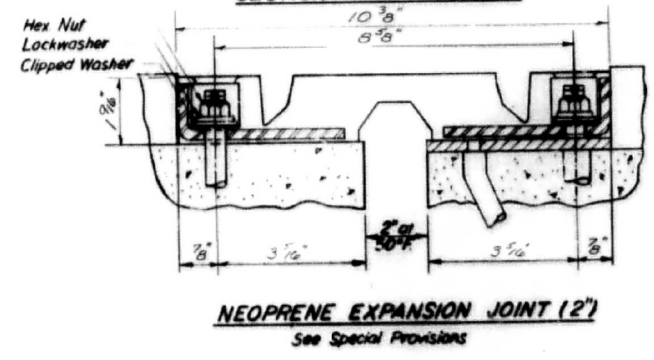
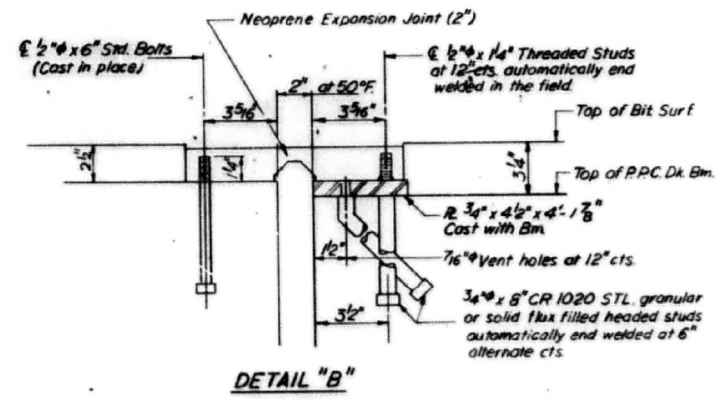
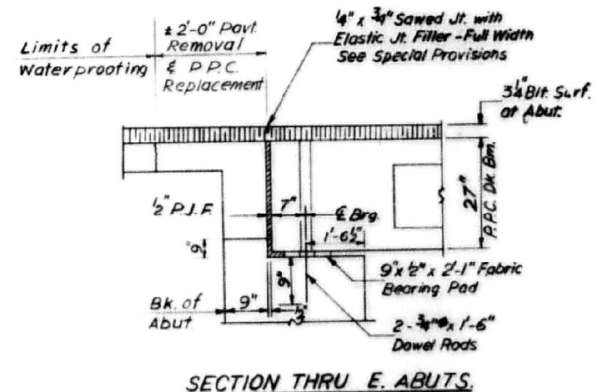
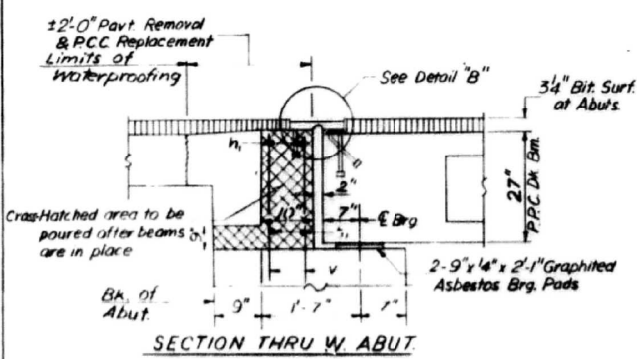


**NOTES:**  
 Cross hatched area to be poured after beams are in place.  
 Hatched area indicates concrete removal.  
 Reinforcement bars extending into removed area shall be cleaned and incorporated into the new construction.  
 Expansion bolts shall be anchored into sound concrete.  
 All edges shall have standard 3/4" chamfer.



**TWO ABUTMENTS  
BILL OF MATERIAL**

Bar	No.	Size	Length	Shape
A	8	#5	25'-9"	—
A	8	#6	26'-0"	—
P	16	#6	26'-6"	—
P <sub>1</sub>	10	#7	26'-0"	—
S <sub>1</sub>	100	#5	10'-3"	□
V	100	#5	3'-6"	—
U <sub>2</sub>	16	#6	7'-6"	—
Class X Concrete		Cu Yds.	53.5	
Reinforcement Bars		Lbs.	5795	
Concrete Removal		Cu Yds.	22	
Expansion Bolts 3/4" Each			80	



DESIGNED M.O.J.  
 CHECKED M.A.Y.  
 DRAWN M.O.J.  
 CHECKED M.A.Y.

**EAST & WEST ABUTMENTS  
S.B.I. RTE. B. SEC. 10 C-I  
PEORIA COUNTY  
STATION 52+00**

MODEL: Default  
 FILE: \\nas01c.pw.state.il.us\pub\pww\dot\Documents\DOT\_Offices\Bldg\dot\Project\DOT\_4\Project\DOT\_4\SB-E-10C-I\SB-E-10C-I-6-11-2020.dwg  
 PLOT DATE = 5/15/2020

USER NAME = SUSERS	DESIGNED -	REVISED -
	DRAWN -	REVISED -
PLOT SCALE = 1:100	CHECKED -	REVISED -
PLOT DATE = 5/15/2020	DATE -	REVISED -

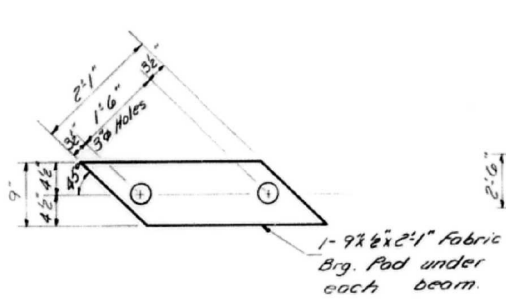
**STATE OF ILLINOIS  
DEPARTMENT OF TRANSPORTATION**

**STRUCTURE PLANS  
(FOR INFORMATION ONLY)**

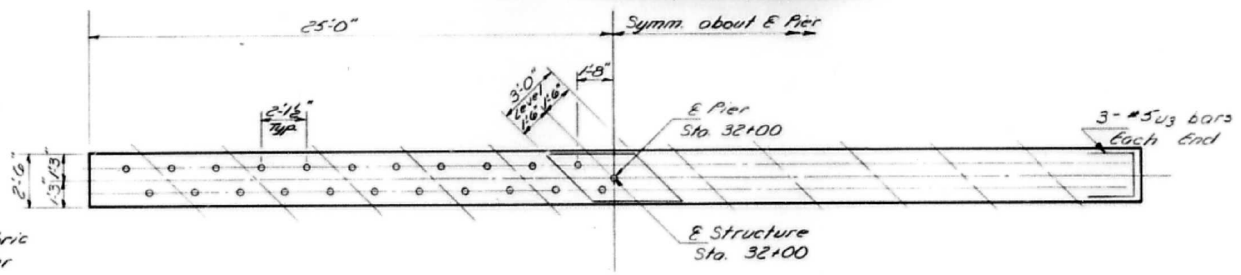
SCALE: SHEET OF SHEETS STA. TO STA.

F.A.U. RTE.	SECTION	COUNTY	TOTAL SHEETS	SHEET NO.
6658	(10C)BRR	PEORIA	24	
CONTRACT NO. 68F66			ILLINOIS FED. AID PROJECT	

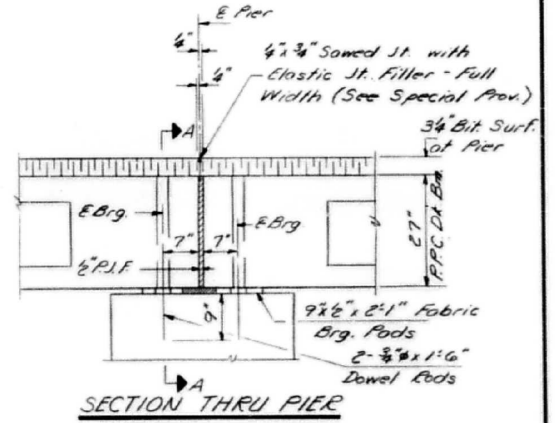
ROUTE NO.	SECTION	COUNTY	TOTAL SHEETS	SHEET NO.
S.B. 10C-1	10C-1	Peoria	11	7
FED. ROAD DIST. NO. 7 ALIQUOT FED. AID PROJECT				



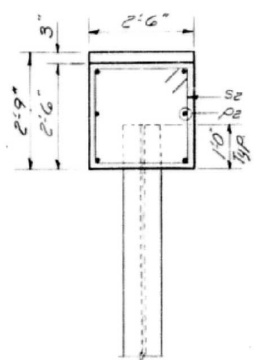
FABRIC BRG. PAD



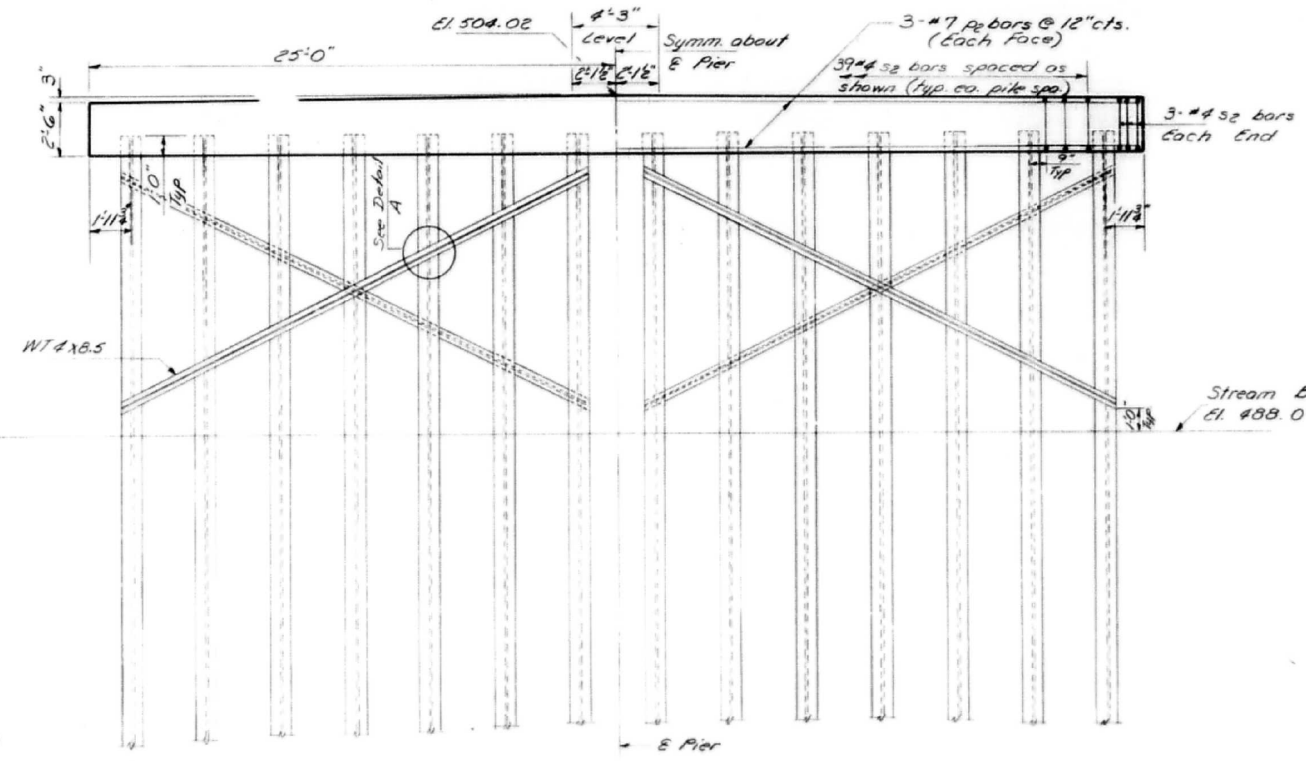
PLAN



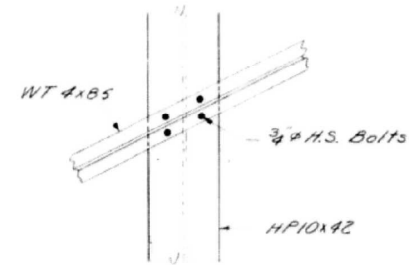
SECTION THRU PIER



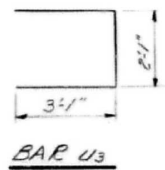
END VIEW



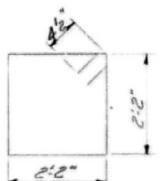
ELEVATION



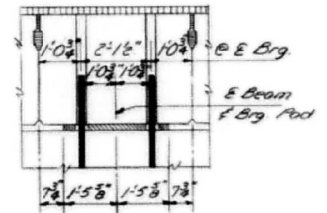
DETAIL A  
Typ. Connection for Each Pile



BAR U3



BAR S2



VIEW A-A

**BILL OF MATERIAL**

BAR NO.	SIZE	LENGTH	SHAPE
P2	6	77	49'8"
S2	45	4	9'5"
U3	6	45	8'3"
Class X Concrete		Cu. Yds.	18.8
Reinforcement Bar		Lbs.	970
Steel Piles HP10x42		Lin. Ft.	871
Test Pile HP10x42		Each	1

**PILE DATA**  
 Type: Steel H Piles - HP10x42  
 Capacity: 45 Tons  
 Est. Length: 67'  
 No. Req'd: 14 (Includes one test pile)

**GENERAL NOTES**

All piles and pile bracing shall receive two shop coats of basic lead silico chromate paint.  
 The cost of the pile bracing and 3/4" H.S. Bolts shall be incidental to furnishing and driving piles.

DESIGNED	J.M.J.
CHECKED	
DRAWN	Derringer
CHECKED	

DATE: 5/15/2020  
 DRAWN: Derringer  
 CHECKED: [Signature]

PIER  
 S.B. 10C-1 - SEC. 10C-1  
 PEORIA COUNTY  
 STA. 32+00

MODEL: Default  
 FILE: \\sbl\peoria\pwworkspace\pwworkspace\1007\Documents\1007\Office\1007\1007.dwg  
 PROJECT: 1007  
 SHEET: 11 of 11  
 DATE: 5/15/2020

USER NAME = SUSERS	DESIGNED -	REVISED -
PLOT SCALE = 1:100	DRAWN -	REVISED -
PLOT DATE = 5/15/2020	CHECKED -	REVISED -
	DATE -	REVISED -

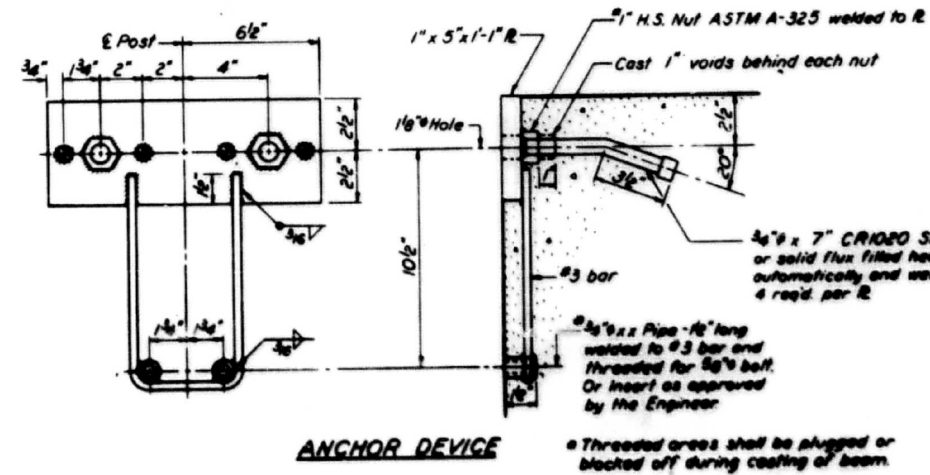
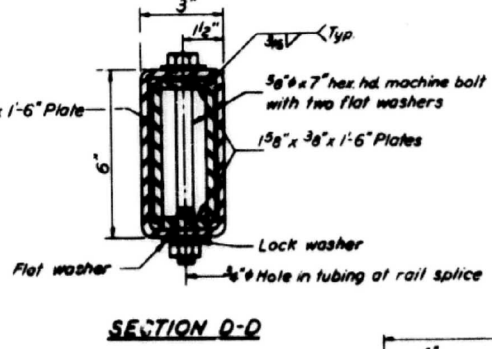
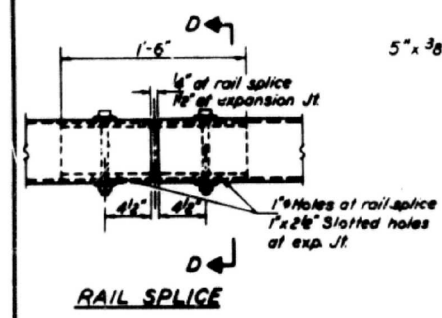
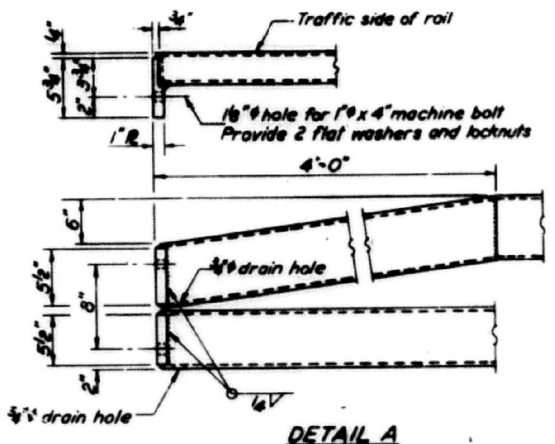
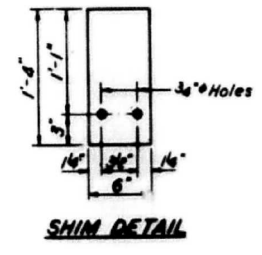
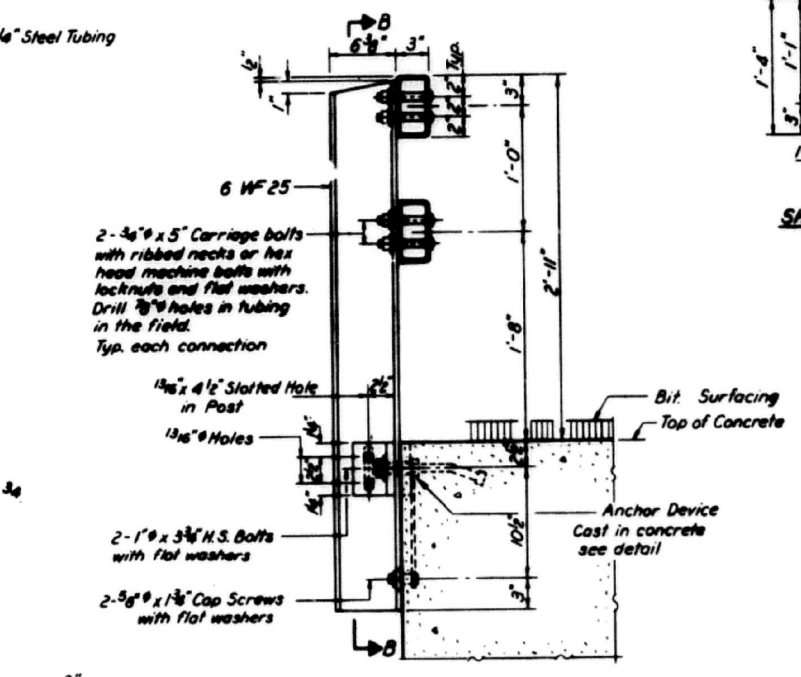
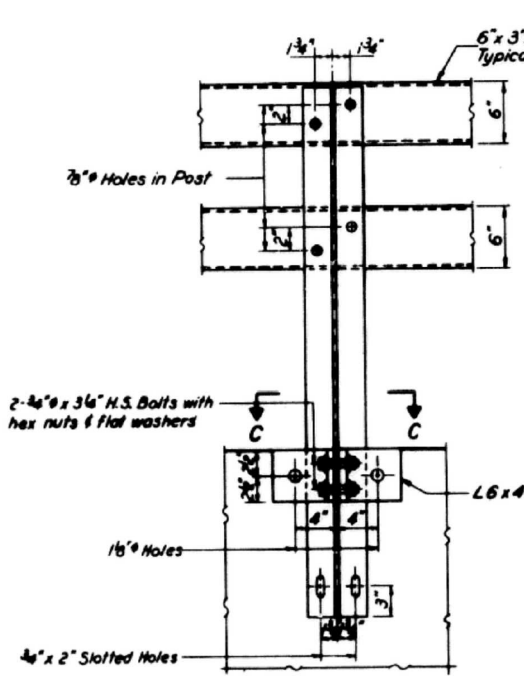
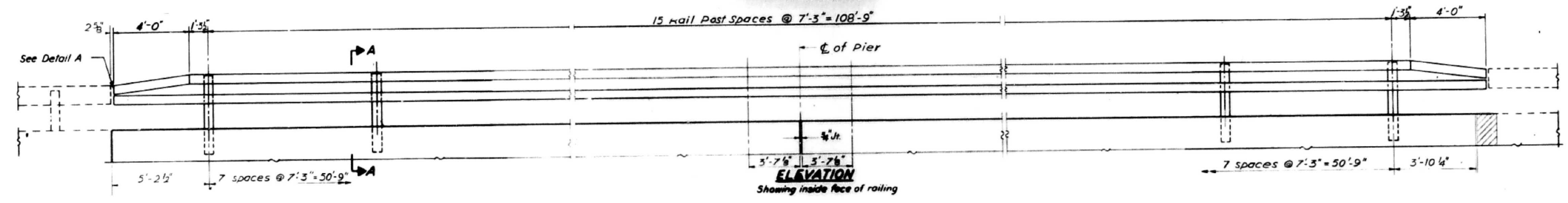
STATE OF ILLINOIS  
 DEPARTMENT OF TRANSPORTATION

STRUCTURE PLANS  
 (FOR INFORMATION ONLY)

SCALE: SHEET OF SHEETS STA. TO STA.

F.A.U. RTE.	SECTION	COUNTY	TOTAL SHEETS	SHEET NO.
6658	(10C)BRR	PEORIA	24	68F66
CONTRACT NO. 68F66				
ILLINOIS FED. AID PROJECT				

PROJECT NO.	6658	SECTION	(10C)BRR	COUNTY	PEORIA	TOTAL SHEETS	24	SHEET NO.	8
-------------	------	---------	----------	--------	--------	--------------	----	-----------	---



**NOTES**

Hollow structural steel tubing shall conform to the requirements of ASTM designation A-501 "Hot Formed Welded and Seamless Carbon Steel Structural Tubing."

All other steel shapes and plates shall conform to the requirements of ASTM designation A-36 except posts shall conform to ASTM A-441. Bolts, cap screws, and nuts shall conform to the requirement of ASTM designation A-307 except for high strength bolts, nuts and washers noted which shall conform to ASTM designation A-325.

All bolts, nuts, cap screws, washers and lock washers shall be galvanized in accordance with ASTM designation A-153.

All posts, railing, rail splices, anchor devices and angles shall be galvanized after shop fabrication in accordance with ASTM designation A-123 and A-385. Galvanized rail shall not be painted.

Railing shall be in accordance with Section 508 of the Standard Specifications, except as noted, and shall be paid for at the contract unit price per lineal foot for STEEL RAILING, TYPE N

All field drilled holes shall be coated with an approved zinc rich paint before erection.

The lower portion of the post flange in contact with concrete shall receive two coats of asphalt paint conforming to Section 714.08 Type B or place 1/2" fabric bearing pad between the post and concrete.

The 3/4" high strength bolts used to connect the 6 x 4 x 3/4 angles to the post shall be tightened in accordance with Article 710.11 of the Standard Specifications. The 1" high strength bolts connecting the angles to the concrete beam shall be tightened to a snug fit and given an additional 1/8 turn.

For multi-span bridges, sufficient 1/2" x 6" x 1'-4" galvanized steel shims shall be provided to align rail between adjacent spans. Cost incidental to Steel Railing.

**BILL OF MATERIAL**

Item	Unit	Quantity
STEEL RAILING, TYPE N	LIN. FT.	2,337

**TYPE N STEEL RAILING**  
**S.B.I.R.T.E. 8 SEC. 10 C-1**  
**PEORIA COUNTY**  
**STATION 32+00**

DESIGNED	M.O.T.
CHECKED	M.A.J.
DRAWN	M.O.T.
CHECKED	A.J.

(19'-0" Max Post Spacing)

MODEL: Default  
 FILE: \\nas01\pub\baronm\data\illinois\gov\PROJECTS\DOT Documents\BIDD Documents\BIDD Documents\BRR\6658\6658-08-structructure.dwg  
 PROJECT: BRR 6658  
 DATE: 5/15/2020

USER NAME = SUSERS	DESIGNED -	REvised -
PLOT SCALE = 1:100	DRAWN -	REvised -
PLOT DATE = 5/15/2020	CHECKED -	REvised -
	DATE -	REvised -

STATE OF ILLINOIS  
 DEPARTMENT OF TRANSPORTATION

STRUCTURE PLANS  
 (FOR INFORMATION ONLY)

SCALE: SHEET OF SHEETS STA. TO STA.

F.A.U. RTE.	SECTION	COUNTY	TOTAL SHEETS	SHEET NO.
6658	(10C)BRR	PEORIA	24	8
CONTRACT NO. 68F66			ILLINOIS FED. AID PROJECT	