

**STATE OF ILLINOIS**  
**DEPARTMENT OF TRANSPORTATION**  
**DIVISION OF HIGHWAYS**  
**PROPOSED**  
**BRIDGE PRESERVATION**

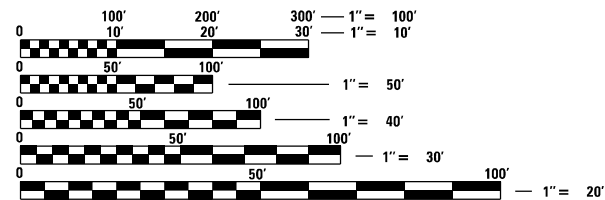
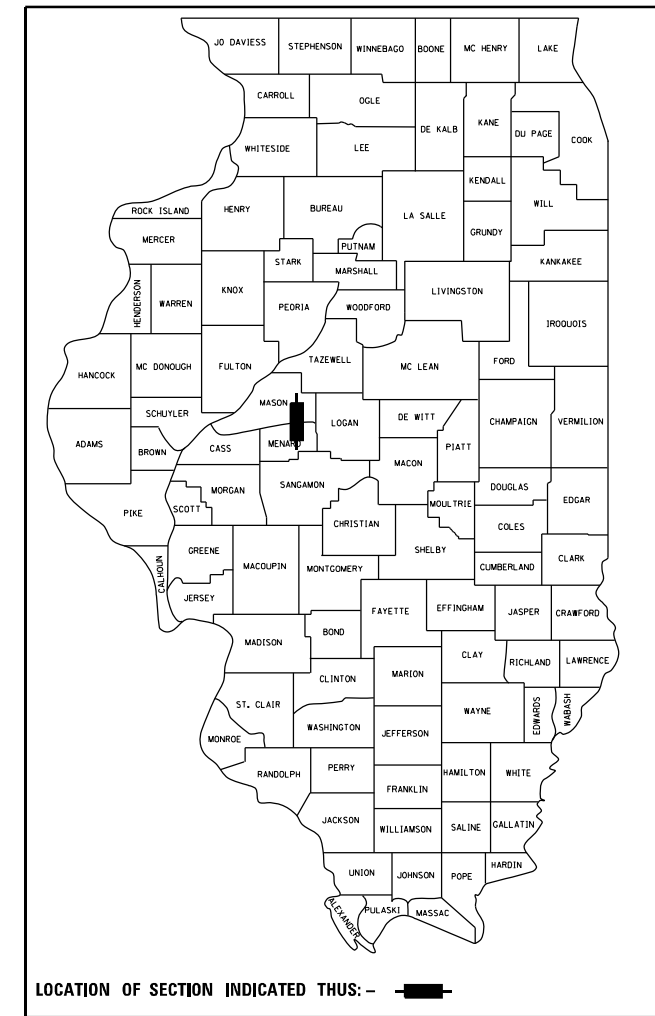
FOR INDEX OF SHEETS, SEE SHEET NO. 2

**FAP 658 (IL 29)**  
**SECTION (F) BDR, BJR, BRR, BC**  
**PROJECT STP-AG2B(989)**  
**BRIDGE PRESERVATION**  
**MASON COUNTY**

C-96-010-17

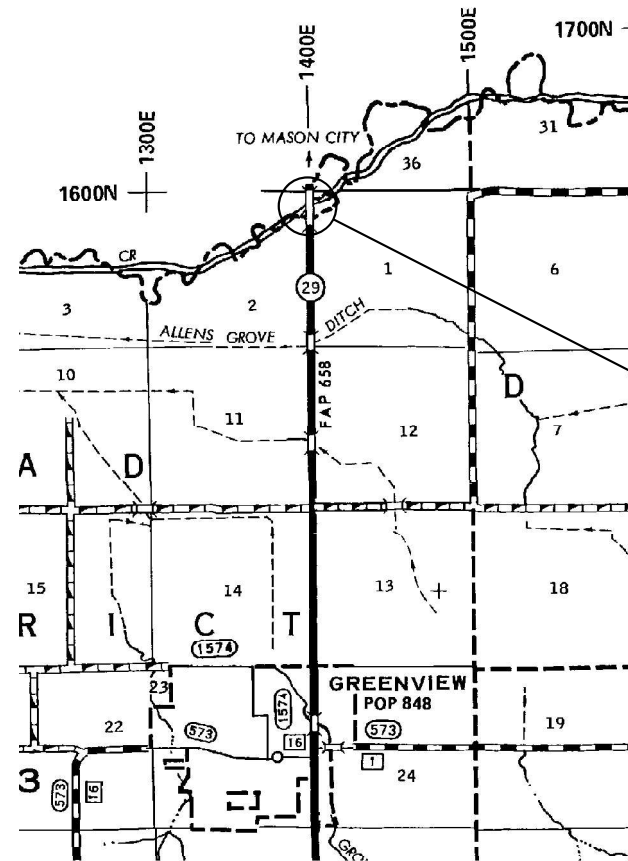
F.A.P. RTE.	SECTION	COUNTY	TOTAL SHEETS	SHEET NO.
658	(F) BDR, BJR, BRR, BC	MASON	15	1
		ILLINOIS	CONTRACT NO. 72J51	

D-96-010-17



FULL SIZE PLANS HAVE BEEN PREPARED USING STANDARD ENGINEERING SCALES. REDUCED SIZED PLANS WILL NOT CONFORM TO STANDARD SCALES. IN MAKING MEASUREMENTS ON REDUCED PLANS, THE ABOVE SCALES MAY BE USED.

J.U.L.I.E.  
 JOINT UTILITY LOCATION INFORMATION FOR EXCAVATION  
 1-800-892-0123  
 OR 811



PROJECT LOCATION - SN 065-0501  
 IL 29 OVER SALT CREEK  
 AT MASON / MENARD COUNTY LINE

BRIDGE MAINTENANCE ENGINEER - BRANDON DUDLEY (217) 785-9290

GROSS LENGTH = NA  
 NET LENGTH = NA

CONTRACT NO. 72J51

**STATE OF ILLINOIS**  
**DEPARTMENT OF TRANSPORTATION**  
**DIVISION OF HIGHWAYS**

SUBMITTED May 4 2020

*[Signature]*  
 REGION FOUR ENGINEER

June 26, 2020 *[Signature]*  
 ENGINEER OF DESIGN AND ENVIRONMENT

June 26, 2020 *[Signature]*  
 DIRECTOR OF HIGHWAYS PROJECT IMPLEMENTATION

**PRINTED BY THE AUTHORITY**  
**OF THE STATE OF ILLINOIS**

INDEX OF SHEETS

- 1 COVER SHEET
- 2 INDEX, STANDARDS, GENERAL NOTES, SCHEDULES, & SIGNATURES
- 3 SUMMAY OF QUANTITIES
- 4-15 BRIDGE PLANS - SN 065-0501



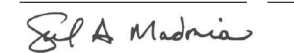
HIGHWAY STANDARDS

- 000001-07
- 001006
- 701001-02
- 701006-05
- 701201-05
- 701301-04
- 701316-13
- 701901-08

CONCRETE SEALER SCHEDULE*	
SUBSTRUCTURE UNIT	CONC. SEALER (SQ FT)
S. ABUT.	506
PIER 3	717
PIER 6	696
N. ABUT.	527
TOTAL:	2446

\* SEE SPECIAL PROVISIONS FOR AREAS TO BE SEALED

GENERAL NOTES:

STATE OF ILLINOIS DEPARTMENT OF TRANSPORTATION DIVISION OF HIGHWAYS DISTRICT 6	
EXAMINED	April 30 20 20
	
ENGINEER OF OPERATIONS	
EXAMINED	April 30 20 20
	
ENGINEER OF PROJECT IMPLEMENTATION	
EXAMINED	April 28 20 20
	
ENGINEER OF PROGRAM DEVELOPMENT	

MODEL: Default  
FILE NAME: \\CENTRALDB\OPERATIONS\Bridges\Bridges\CAD\72J51 - 0650501\_patching and holes\plans\sheet.dgn

	USER NAME = dudleybm	DESIGNED -	REVISED -	<b>STATE OF ILLINOIS DEPARTMENT OF TRANSPORTATION</b>	<b>INDEX, STANDARDS, GENERAL NOTES, QUANTITY SCHEDULES, &amp; SIGNATURES</b>	SCALE:	SHEET OF SHEETS	STA. TO STA.	F.A.P. RTE.	SECTION	COUNTY	TOTAL SHEETS	SHEET NO.		
		DRAWN -	REVISED -								(F) BDR, BJR, BRR, BC	MASON	15	2	
	PLOT SCALE = 100,0000 ' / in.	CHECKED -	REVISED -												
	PLOT DATE = 5/6/2020	DATE -	REVISED -												
												CONTRACT NO. 72J51			
												ILLINOIS FED. AID PROJECT			

MODEL: Default  
FILE NAME: \\CENTRALDB\OPERATIONS\Bridges\Bridges\CAD\72J51 - 0650501\_patching and holes\plansheet.dgn

0-01291-6001  
SN 065-0501  
80% FED.  
20% STATE  
BRIDGE/RURAL  
0047  
MENARD

0-01291-6001  
SN 065-0501  
80% FED.  
20% STATE  
BRIDGE/RURAL  
0047  
MENARD

CODE NO.	ITEM	UNIT	TOTAL QUANTITY	BRIDGE/RURAL 0047 MENARD
50102400	CONCRETE REMOVAL	CU YD	0.2	0.2
52000030	PREFORMED JOINT SEAL 2-1/2"	FOOT	82	82
52000040	PREFORMED JOINT SEAL 3-1/2"	FOOT	41	41
58700300	CONCRETE SEALER	SQ FT	2446	2446
59200101	BRIDGE WASHING NO. 1	EACH	1	1
67100100	MOBILIZATION	L SUM	1	1
70100100	TRAFFIC CONTROL AND PROTECTION, STANDARD 701316	EACH	1	1
70100450	TRAFFIC CONTROL AND PROTECTION, STANDARD 701201	L SUM	1	1
70106500	TEMPORARY BRIDGE TRAFFIC SIGNALS	EACH	1	1
70106700	TEMPORARY RUMBLE STRIPS	EACH	6	6
X0325748	ACRYLIC COATING	SQ YD	18.3	18.3
X0325749	FIBER WRAP	SQ FT	122.8	122.8
X7200201	WIDTH RESTRICTION SIGNING	L SUM	1	1
Z0001906	STRUCTURAL STEEL REPAIR	L SUM	1	1

CODE NO.	ITEM	UNIT	TOTAL QUANTITY	BRIDGE/RURAL 0047 MENARD
Z0016002	DECK SLAB REPAIR (FULL DEPTH, TYPE II)	SQ YD	5	5
Z0016200	DECK SLAB REPAIR (PARTIAL)	SQ YD	122	122
Z0032500	JOINT SEALING (PATCHES)	FOOT	1087	1087
Z0041895	POLYMER CONCRETE	CU FT	21	21
Z0043800	PRECAST PRESTRESSED CONCRETE I-BEAM REPAIR	SQ FT	38.2	38.2

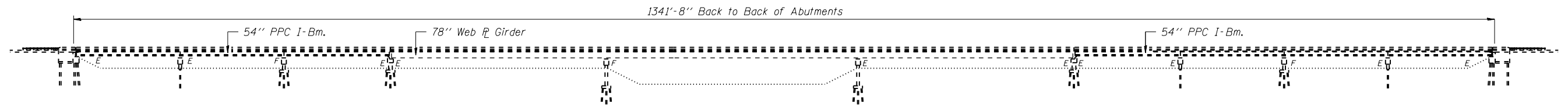
USER NAME = dudleybm	DESIGNED -	REVISED -
PLOT SCALE = 100.0000 ' / in.	DRAWN -	REVISED -
PLOT DATE = 5/6/2020	CHECKED -	REVISED -
	DATE -	REVISED -

**STATE OF ILLINOIS  
DEPARTMENT OF TRANSPORTATION**

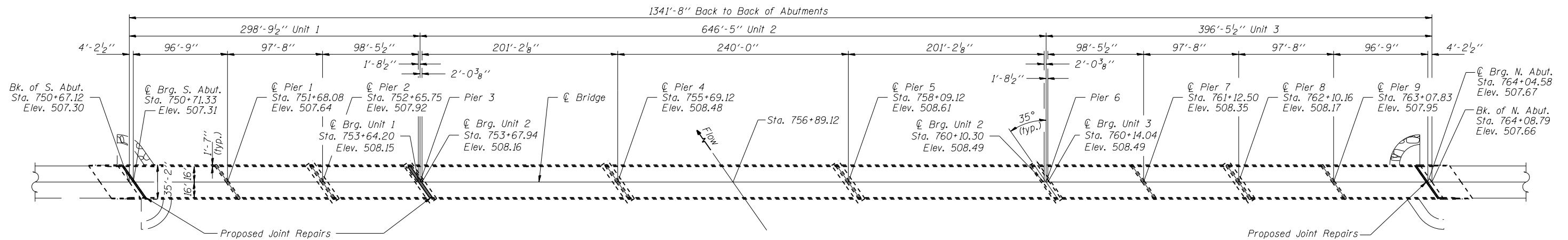
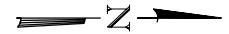
**SUMMARY OF QUANTITIES**

SCALE: SHEET OF SHEETS STA. TO STA.

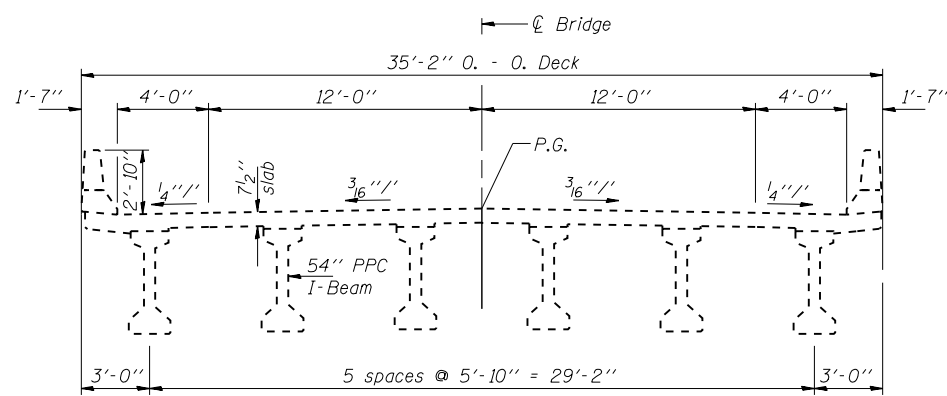
F.A.P. RTE.	SECTION	COUNTY	TOTAL SHEETS	SHEET NO.
658	(F) BDR, BJR, BRR, BC	MASON	15	3
CONTRACT NO. 72J51			ILLINOIS FED. AID PROJECT	



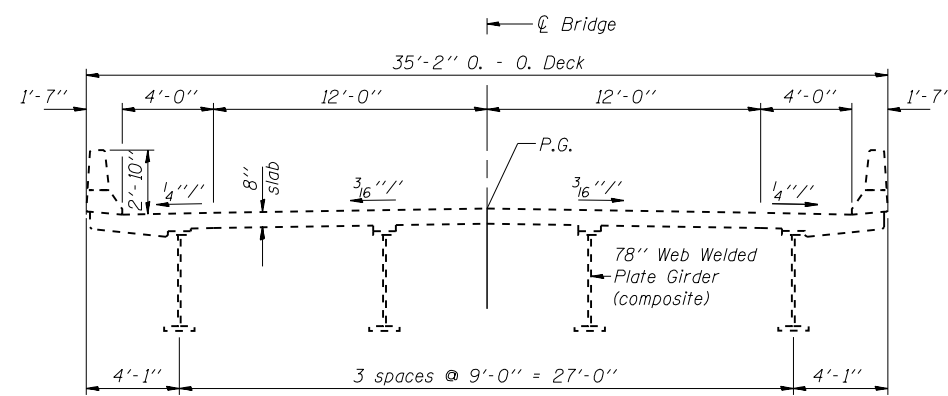
**ELEVATION**



**PLAN**



**CROSS SECTION**  
(Unit 1 or 3)



**CROSS SECTION**  
(Unit 2)



Expires 11-30-2020  
*David Carl Puzey*  
 6/22/2020

**TOTAL BILL OF MATERIAL (065-0501)**

ITEM	UNIT	QUANTITY
Concrete Removal	Cu. Yd.	0.2
Polymer Concrete	Cu. Ft.	21
Preformed Joint Seal 2-1/2"	Foot	82
Preformed Joint Seal 3-1/2"	Foot	41
Deck Slab Repair (Partial)	Sq. Yd.	122
Deck Slab Repair (Full Depth, Type II)	Sq. Yd.	5
Joint Sealing (Patches)	Foot	1087
Fiber Wrap	Sq. Ft.	122.8
Acrylic Coating	Sq. Yd.	18.3
Precast Prestressed Concrete I-Beam Repair	Sq. Ft.	38.2
Structural Steel Repair	L Sum	1
Bridge Washing No. 1	L Sum	1
Concrete Sealer	Sq. Ft.	2446

**STRUCTURE GENERAL NOTES:**

PRIOR TO POURING THE NEW CONCRETE DECK, ALL HEAVY OR LOOSE MILL SCALE AND OTHER LOOSE OR POTENTIALLY DETRIMENTAL FOREIGN MATERIAL SHALL BE REMOVED FROM THE SURFACES IN CONTACT WITH CONCRETE. TIGHTLY ADHERED PAINT MAY REMAIN UNLESS OTHERWISE NOTED. REMOVAL SHALL BE ACCOMPLISHED BY METHODS THAT WILL NOT DAMAGE THE STEEL AND THE COST WILL BE INCLUDED IN CONCRETE REMOVAL.

PLAN DIMENSIONS AND DETAILS RELATIVE TO EXISTING PLANS ARE SUBJECT TO NOMINAL CONSTRUCTION VARIATIONS. THE CONTRACTOR SHALL FIELD VERIFY EXISTING DIMENSIONS AND DETAILS AFFECTING NEW CONSTRUCTION AND MAKE NECESSARY APPROVED ADJUSTMENTS PRIOR TO CONSTRUCTION OR ORDERING OF MATERIALS. SUCH VARIATIONS SHALL NOT BE CAUSE FOR ADDITIONAL COMPENSATION FOR A CHANGE IN THE SCOPE OF WORK, HOWEVER, THE CONTRACTOR WILL BE PAID FOR THE QUANTITY ACTUALLY FURNISHED AT THE UNIT PRICE BID FOR THE WORK.

EXISTING REINFORCEMENT BARS EXTENDING INTO THE REMOVAL AREA SHALL BE CLEANED, STRAIGHTENED, AND INCORPORATED INTO THE NEW CONSTRUCTION. ANY REINFORCEMENT BARS THAT ARE DAMAGED DURING CONCRETE REMOVAL SHALL BE REPLACED WITH AN APPROVED BAR SPLICER OR ANCHORAGE SYSTEM. COST INCLUDED WITH CONCRETE REMOVAL.

JOINT OPENINGS SHALL BE ADJUSTED ACCORDING TO ARTICLE 520.04 OF THE STANDARD SPECIFICATIONS WHEN THE DECK IS POURED AT AN AMBIENT TEMPERATURE OTHER THAN 50°F.

PERFORMED JOINT SEAL SHALL BE THE PERFORMED PRE-COMPRESSED, SILICONE COATED, SELF-EXPANDING SEALANT SYSTEM DESCRIBED IN THE SPECIAL PROVISION.

SEE SPECIAL PROVISIONS FOR LIMITS OF BRIDGE WASHING, LIMITS OF CONCRETE SEALER, AND DETAILS OF STRUCTURAL STEEL REPAIR.

USER NAME = dudleybm	DESIGNED - BRANDON DUDLEY	REVISED -
	DRAWN - BRANDON DUDLEY	REVISED -
PLOT SCALE = 100,0000' / in.	CHECKED - JASON JONES	REVISED -
PLOT DATE = 5/6/2020	DATE - 4/2/2020	REVISED -

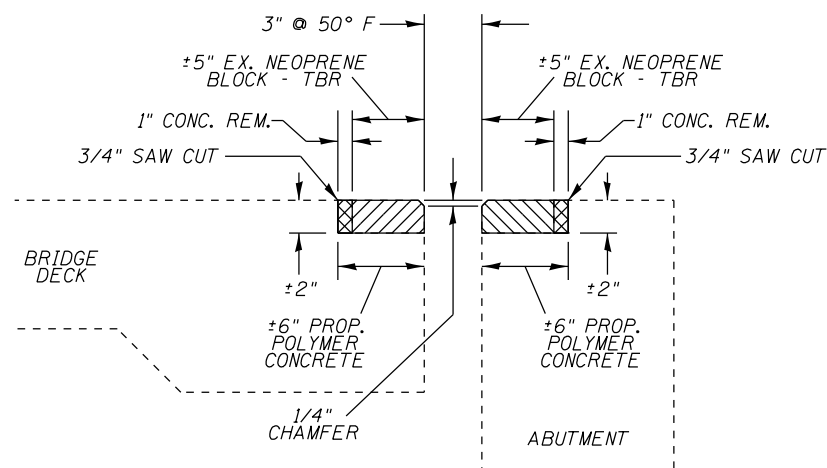
**STATE OF ILLINOIS  
DEPARTMENT OF TRANSPORTATION**

**BRIDGE PLAN & ELEVATION  
SN 065-0501**

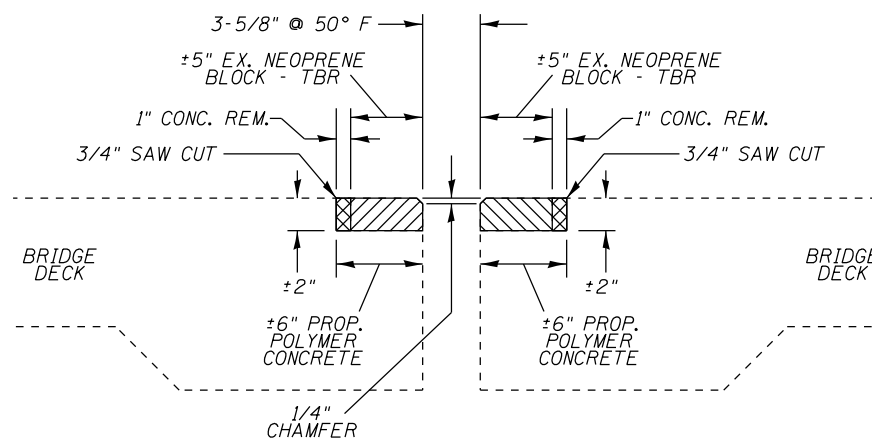
SCALE: SHEET 1 OF 12 SHEETS STA. TO STA.

F.A.P. RTE.	SECTION	COUNTY	TOTAL SHEETS	SHEET NO.
658	(F) BDR, BJR, BRR, BC	MASON	15	4
CONTRACT NO. 72J51			ILLINOIS FED. AID PROJECT	

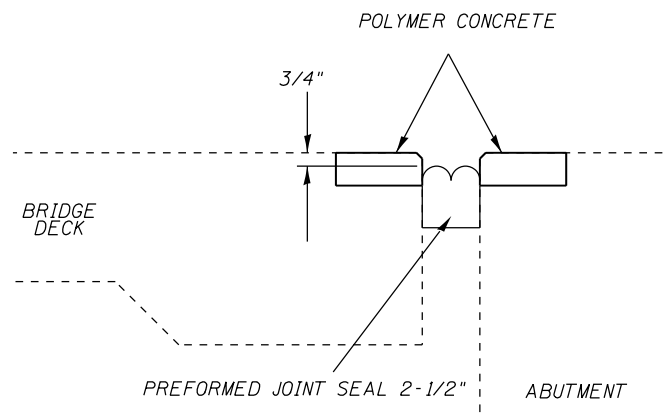
MODEL: Default  
FILE NAME: \\contracts\operations\bridges\bridgeplans\_CAD\72J51 - 0650501 - patching and jointseal.brd.dwg



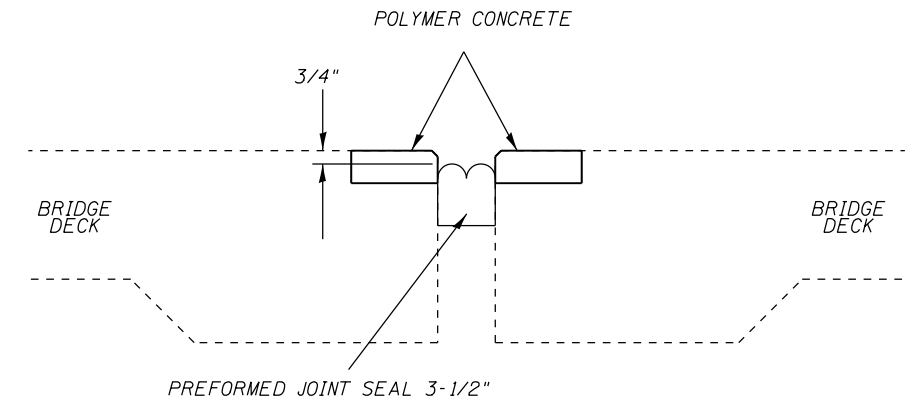
TYPICAL JOINT CROSS SECTION:  
NORTH AND SOUTH ABUTMENTS



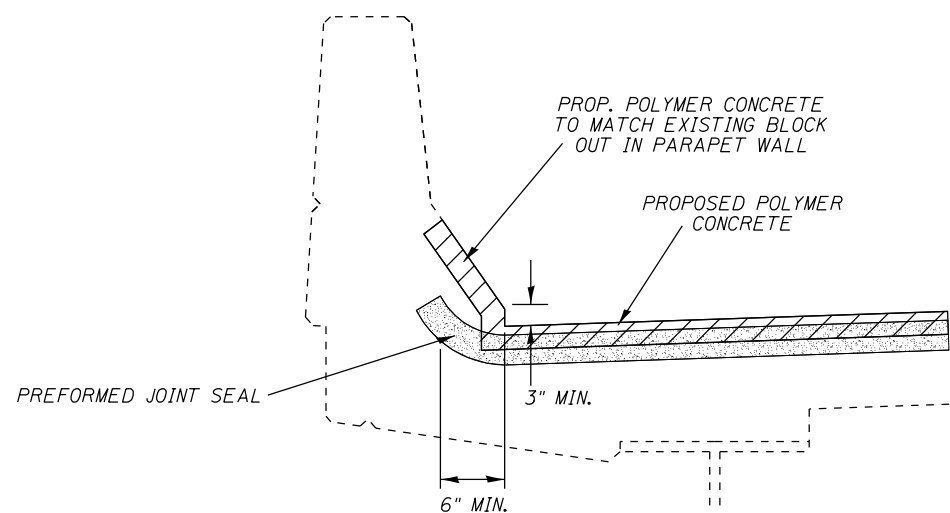
JOINT CROSS SECTION:  
PIER 3



SILICONE JOINT SEALER DETAIL:  
NORTH AND SOUTH ABUTMENTS



EXPANSION JOINT (SPECIAL):  
PIER 3



TYPICAL PARAPET CROSS SECTION:  
JOINT SEALER END TREATMENT (ALL TYPES & SIZES)

NOTES:

- 1/4" CHAMFER MAY BE ACHIEVED BY GRINDING AFTER POLYMER CONCRETE HAS CURED.
- REMOVAL OF EXISTING NEOPRENE EXPANSION JOINTS SHALL BE INCLUDED IN THE COST FOR CONCRETE REMOVAL.
- ANY STEEL ANCHORING STUDS ENCOUNTERED IN THE REMOVAL AREA SHALL BE CUT OFF FLUSH WITH THE EXISTING CONCRETE, COST TO BE INCLUDED IN THE BID PRICE FOR CONCRETE REMOVAL.

JOINT REPAIR BILL OF MATERIAL		
ITEM	UNIT	QUANTITY
CONCRETE REMOVAL	CU. YD.	0.2
POLYMER CONCRETE	CU. FT.	21
PREFORMED JOINT SEAL 2-1/2"	FOOT	82
PREFORMED JOINT SEAL 3-1/2"	FOOT	41

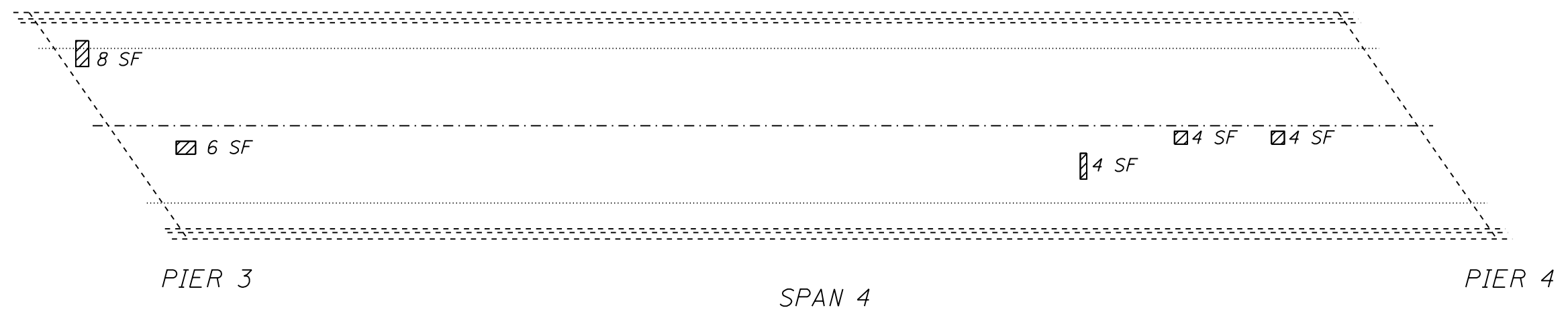
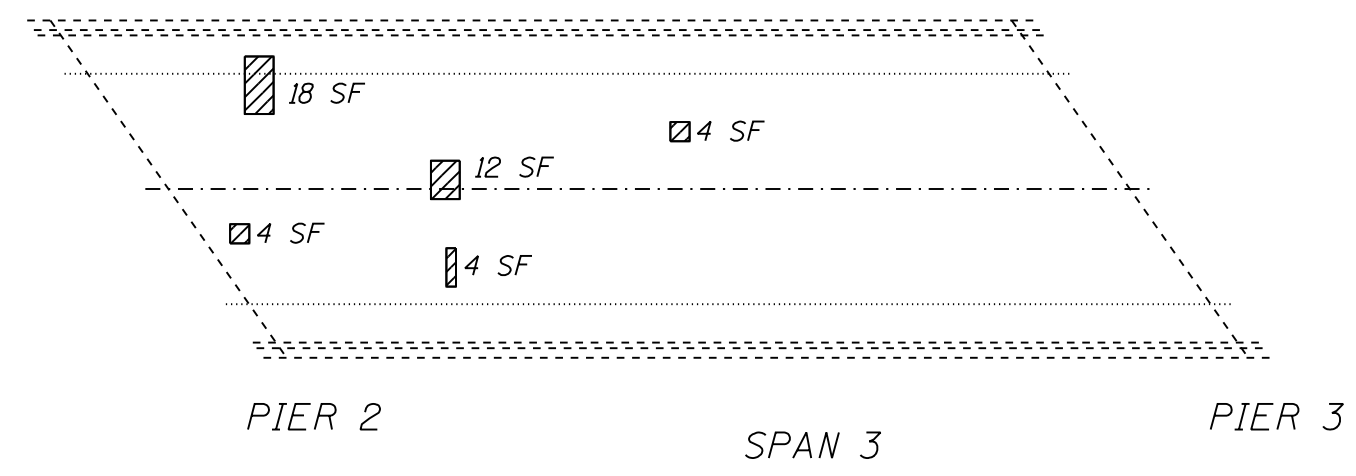
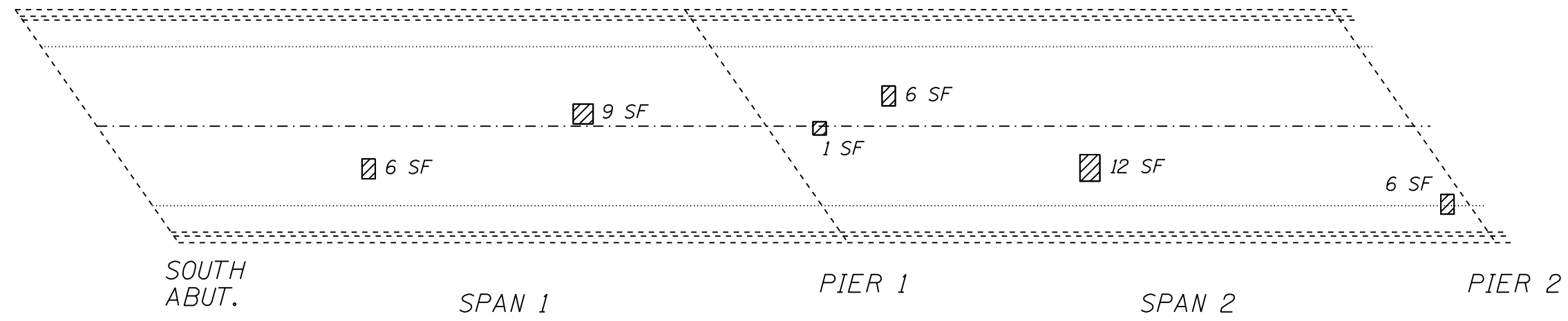
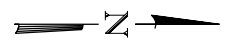
MODEL: Default  
FILE NAME: \\CENTRALDB\OPERATIONS\Bridges\Bridges\CAD\72J51 - 0650501\_patching and jointsealerdetail.dgn

USER NAME = dudleybm	DESIGNED -	REVISED -
PLOT SCALE = 100.0000' / in.	DRAWN -	REVISED -
PLOT DATE = 5/6/2020	CHECKED -	REVISED -
	DATE -	REVISED -

STATE OF ILLINOIS  
DEPARTMENT OF TRANSPORTATION

JOINT REPAIR DETAILS			
SN 065-0501			
SCALE:	SHEET 2	OF 12 SHEETS	STA. TO STA.

F.A.P. RTE.	SECTION	COUNTY	TOTAL SHEETS	SHEET NO.
658	(F) BDR, BJR, BRR, BC	MASON	15	5
ILLINOIS FED. AID PROJECT			CONTRACT NO. 72J51	



DECK SLAB REPAIR (PARTIAL)

**NOTES:**

1. THE PATCH SIZES AND LOCATIONS SHOWN ARE ESTIMATED. THE FINAL PATCH LOCATIONS SHALL BE DETERMINED BY THE ENGINEER IN THE FIELD.
2. PATCHING SURVEY CONDUCTED 2-2020.
3. ALL PATCHES SHALL BE SEALED AROUND THEIR PERIMETER.
4. BILL OF MATERIAL LOCATED ON LAST PATCHING PLAN SHEET.

MODEL: Default  
FILE NAME: C:\CONTRACTS\OPERATIONS\Bridges\Bridges\CAD\72J51 - 0650501\_patching and holes\plansheet.dgn

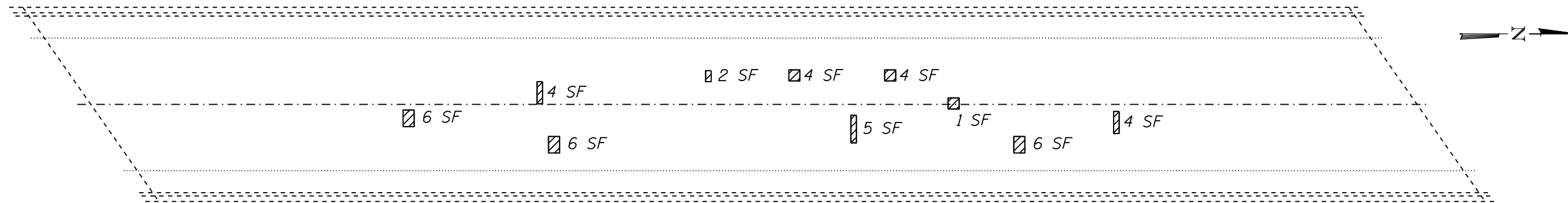
USER NAME = dudleybm	DESIGNED -	REVISED -
	DRAWN -	REVISED -
PLOT SCALE = 100.0000' / in.	CHECKED -	REVISED -
PLOT DATE = 5/6/2020	DATE -	REVISED -

**STATE OF ILLINOIS  
DEPARTMENT OF TRANSPORTATION**

**DECK PATCHING PLAN  
SN 065-0501**

SCALE: SHEET 3 OF 12 SHEETS STA. TO STA.

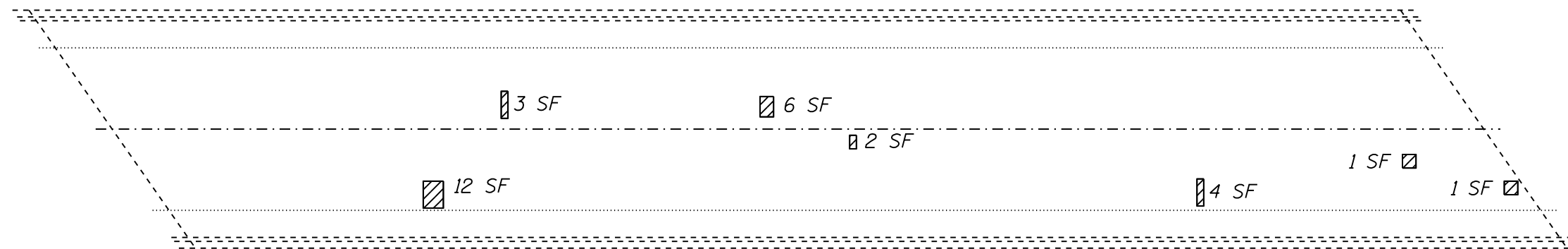
F.A.P. RTE.	SECTION	COUNTY	TOTAL SHEETS	SHEET NO.
658	(F) BDR, BJR, BRR, BC	MASON	15	6
ILLINOIS FED. AID PROJECT			CONTRACT NO. 72J51	



PIER 4

SPAN 5

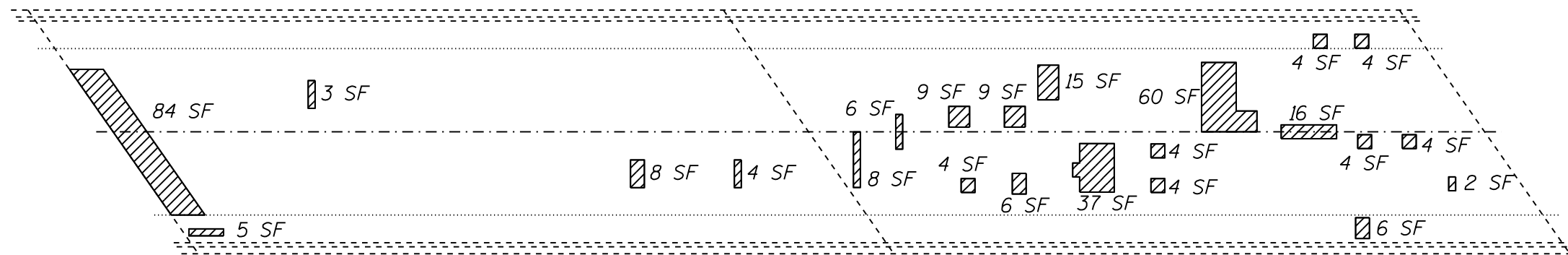
PIER 5



PIER 5

SPAN 6

PIER 6



PIER 6

SPAN 7

PIER 7

SPAN 8

PIER 8



DECK SLAB REPAIR (PARTIAL)

NOTES:

1. THE PATCH SIZES AND LOCATIONS SHOWN ARE ESTIMATED. THE FINAL PATCH LOCATIONS SHALL BE DETERMINED BY THE ENGINEER IN THE FIELD.
2. PATCHING SURVEY CONDUCTED 2-2020.
3. ALL PATCHES SHALL BE SEALED AROUND THEIR PERIMETER.
4. BILL OF MATERIAL LOCATED ON LAST PATCHING PLAN SHEET.

MODEL: Default  
FILE NAME: \\CENTRAL\BID\OPERATIONS\Bridges\BldgPlans\_CAD\72J51 - 0650501\_patching and hatching.dwg

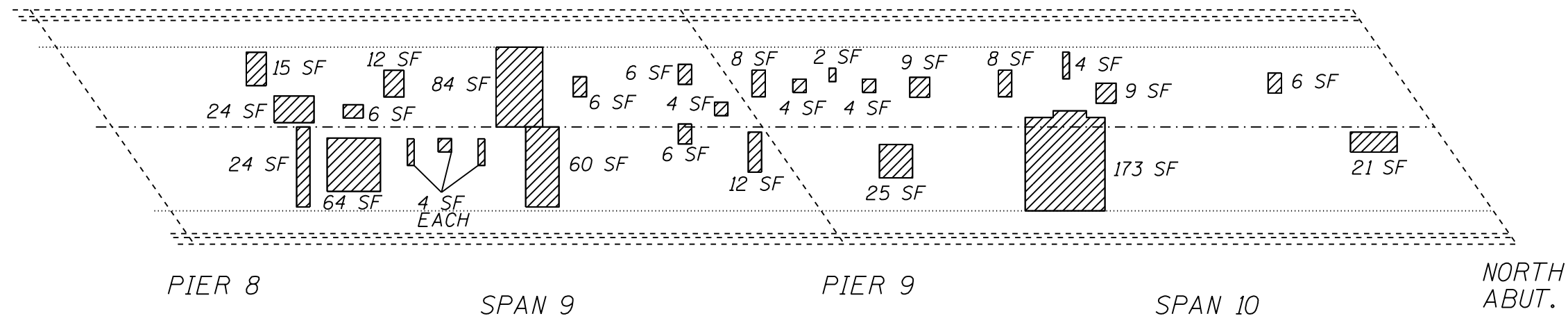
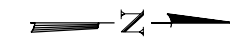
USER NAME = dudleybm	DESIGNED -	REVISED -
	DRAWN -	REVISED -
PLOT SCALE = 100.0000' / in.	CHECKED -	REVISED -
PLOT DATE = 5/6/2020	DATE -	REVISED -

STATE OF ILLINOIS  
DEPARTMENT OF TRANSPORTATION

DECK PATCHING PLAN  
SN 065-0501

SCALE: SHEET 4 OF 12 SHEETS STA. TO STA.

F.A.P. RTE.	SECTION	COUNTY	TOTAL SHEETS	SHEET NO.
658	(F) BDR, BJR, BRR, BC	MASON	15	7
ILLINOIS FED. AID PROJECT			CONTRACT NO. 72J51	



 DECK SLAB REPAIR (PARTIAL)

- NOTES:
1. THE PATCH SIZES AND LOCATIONS SHOWN ARE ESTIMATED. THE FINAL PATCH LOCATIONS SHALL BE DETERMINED BY THE ENGINEER IN THE FIELD.
  2. PATCHING SURVEY CONDUCTED 2-2020.
  3. ALL PATCHES SHALL BE SEALED AROUND THEIR PERIMETER.

PATCHING BILL OF MATERIAL		
ITEM	UNIT	QUANTITY
DECK SLAB REPAIR (PARTIAL)	SQ. YD.	122
DECK SLAB REPAIR (FULL DEPT. TYPE II) *	SQ. YD.	5
JOINT SEALING (PATCHES)	FOOT	1087

\* NO FD PATCHES IDENTIFIED, NOMINAL QUANTITY INCLUDED

MODEL: Default  
FILE NAME: \\CENTRALDB\OPERATIONS\Bridges\Bridges\CAD\72J51 - 0650501 - patching and jointsealing.dgn

USER NAME = dudleybm	DESIGNED -	REVISED -
PLOT SCALE = 100.0000' / in.	DRAWN -	REVISED -
PLOT DATE = 5/6/2020	CHECKED -	REVISED -
	DATE -	REVISED -

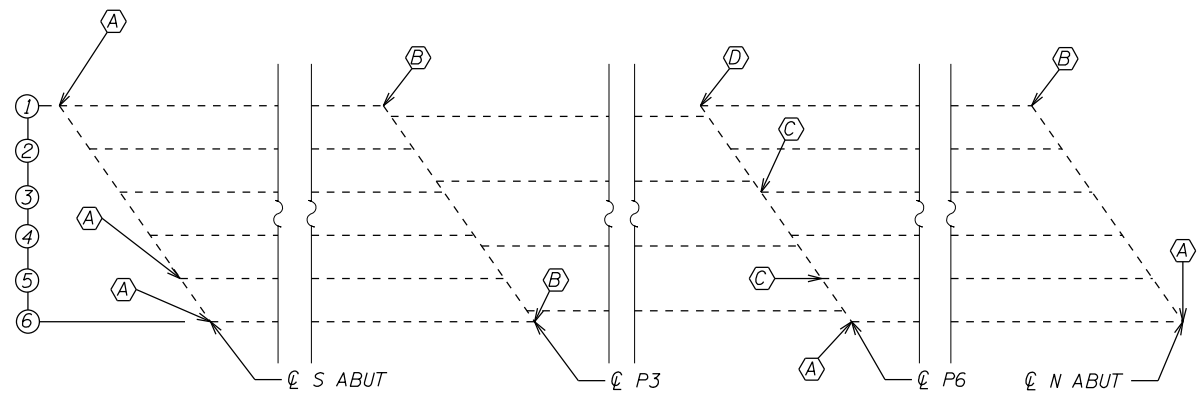
**STATE OF ILLINOIS  
DEPARTMENT OF TRANSPORTATION**

**DECK PATCHING PLAN  
SN 065-0501**

SCALE: SHEET 5 OF 12 SHEETS STA. TO STA.

F.A.P. RTE.	SECTION	COUNTY	TOTAL SHEETS	SHEET NO.
658	(F) BDR, BJR, BRR, BC	MASON	15	8
ILLINOIS FED. AID PROJECT			CONTRACT NO. 72J51	

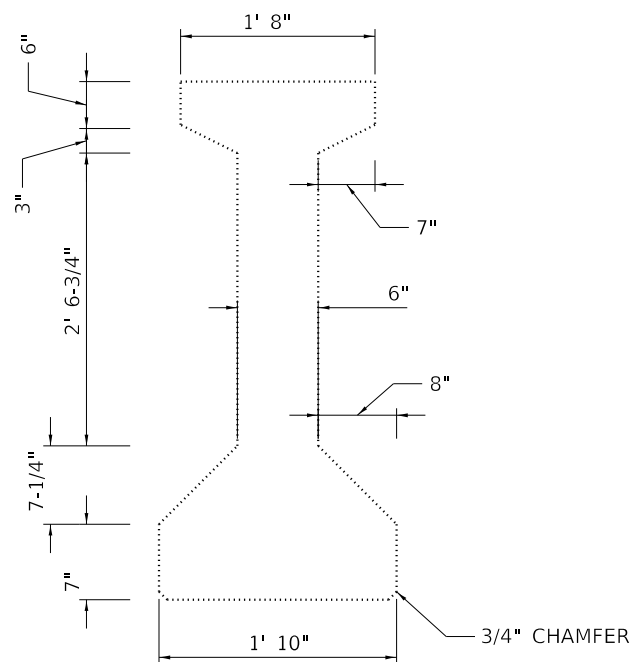




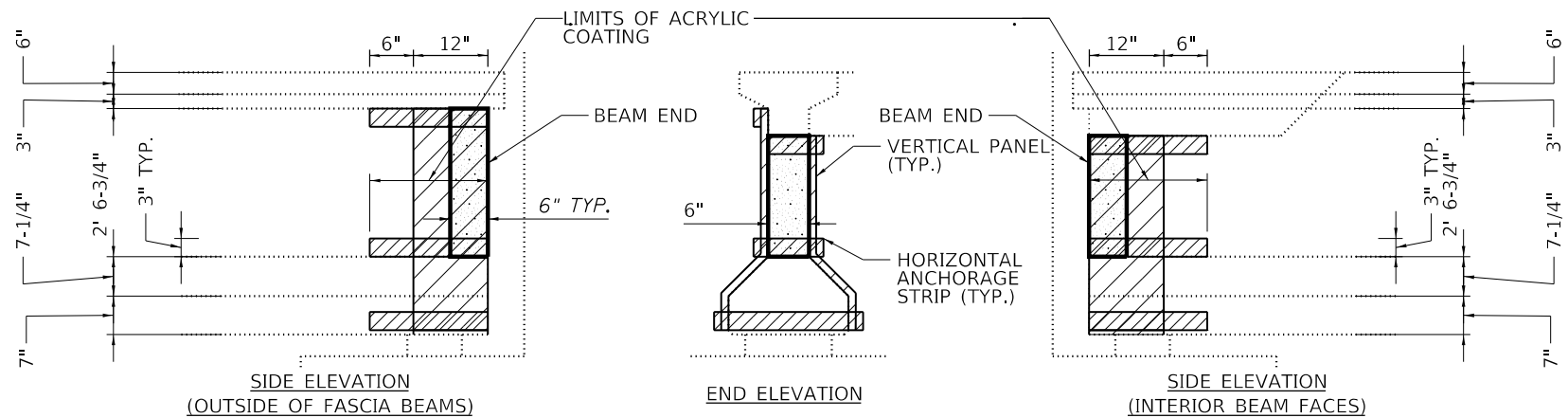
PARTIAL FRAMING PLAN



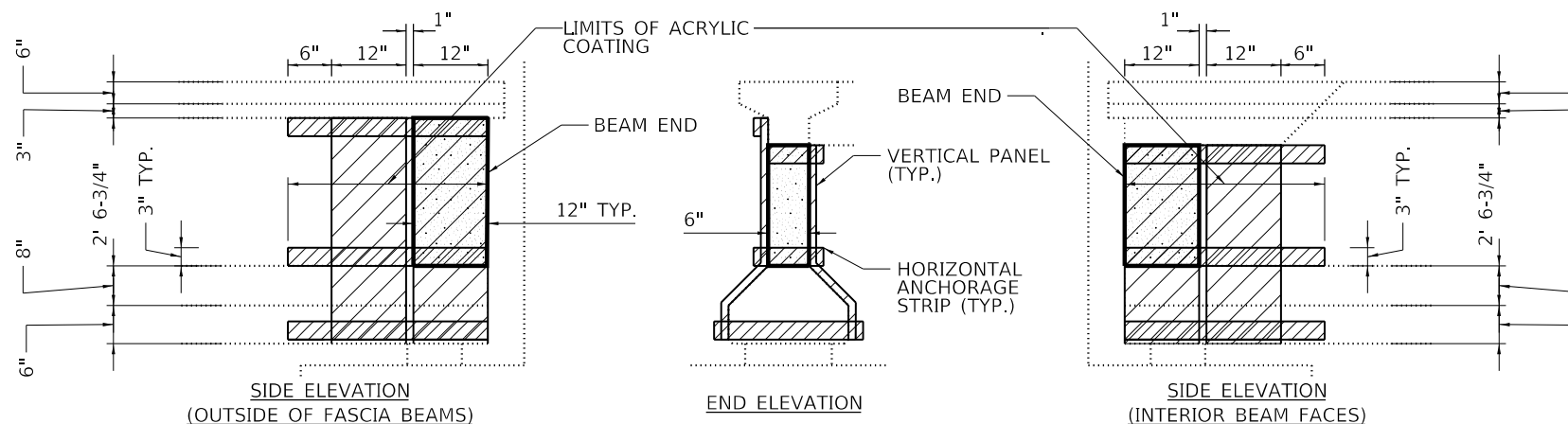
- (A) CONCRETE BEAM END REPAIR "TYPE A"
- (B) CONCRETE BEAM END REPAIR "TYPE B"
- (C) INSTALL NEW 1-1/4" Ø ANCHOR BOLT NUT
- (D) TIGHTEN EXISTING 1-1/4" Ø ANCHOR BOLT NUT



TYPICAL BEAM END CROSS SECTION



CONCRETE BEAM END REPAIR "TYPE A" DETAIL



CONCRETE BEAM END REPAIR "TYPE B" DETAIL

TYPICAL APPLICATION RATES *			
REPAIR TYPE	FIBER WRAP (SF)	ACRYLIC COATING (SY)	I-BEAM REPAIR (SF)
A	11.0	1.8	3.8
B	22.6	3.1	6.4

\*ACTUAL PAY QUANTITIES WILL BE MEASURED AND PAID PER SPECIAL PROVISIONS

MISCELLANEOUS REPAIRS BILL OF MATERIAL

ITEM	UNIT	QUANTITY
Fiber Wrap	Sq. Ft.	122.8
Acrylic Coating	Sq. Yd.	18.3
Precast Prestressed Concrete I-Beam Repair	Sq. Ft.	38.2
Structural Steel Repair **	L Sum	1

\*\* See special provisions

Notes:

- Acrylic coating shall be placed over fiber wrap repairs. Two coats shall be applied.
- See Special Provisions for "Fiber Wrap for PCC I-Beam Repairs."
- See Special Provisions for "Precast Prestressed Concrete I-Beam Repairs."
- Vertical panels must be between 10" and 12". Vertical panels shall extend beyond the repair zone by a minimum of 3". Vertical panels located above the bearing location shall be placed in two pieces. Vertical panels outside the bearing location shall wrap under the bottom of the beam in a continuous strip up both sides of the beam.
- Horizontal anchorage strips shall be 3" wide and extend a minimum of 6" beyond the vertical panels. The horizontal strips shall be placed on top of the vertical panels.

MODEL: Default  
FILE NAME: \\CENTRAL\BID\OPERATIONS\Bridges\Bridges\CAD\72J51 - 0650501\_patchin\_and\_bolts\plansheet.dgn

USER NAME = dudleybm	DESIGNED -	REVISED -
PLOT SCALE = 100.0000' / in.	DRAWN -	REVISED -
PLOT DATE = 5/6/2020	CHECKED -	REVISED -
	DATE -	REVISED -

STATE OF ILLINOIS  
DEPARTMENT OF TRANSPORTATION

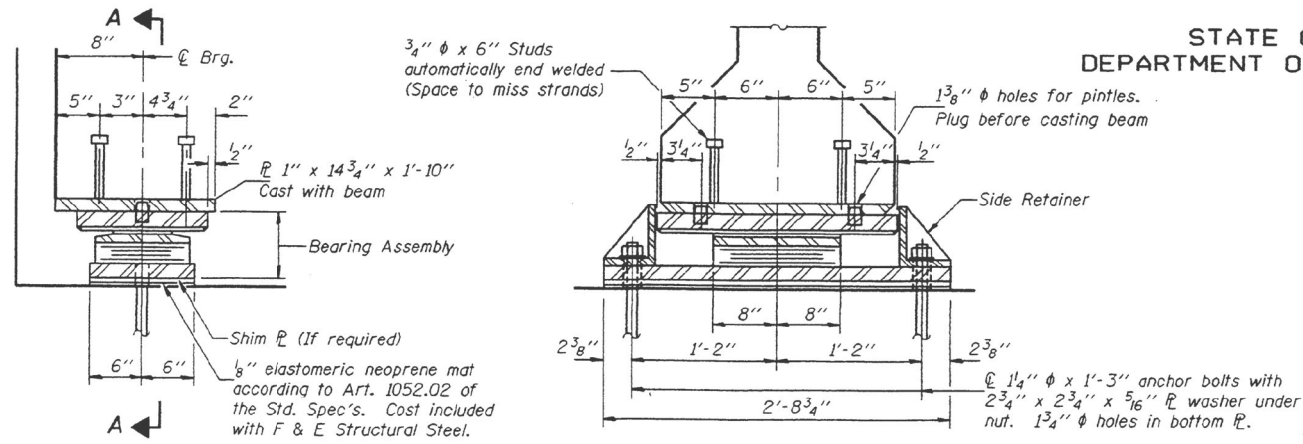
MISCELLANEOUS REPAIR DETAILS  
SN 065-0501

SCALE: SHEET 6 OF 12 SHEETS STA. TO STA.

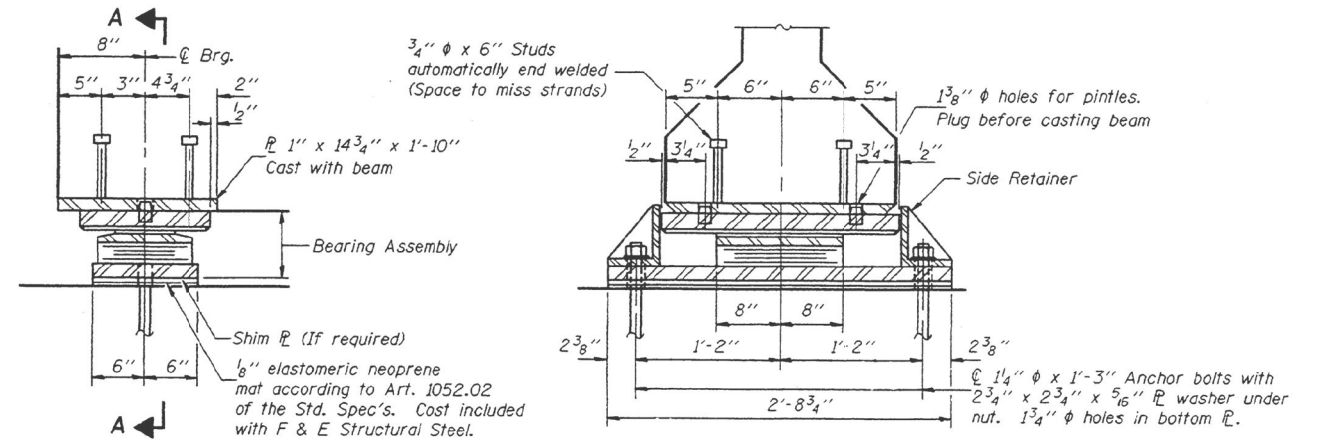
F.A.P. RTE.	SECTION	COUNTY	TOTAL SHEETS	SHEET NO.
658	(F) BDR, BJR, BRR, BC	MASON	15	9
			CONTRACT NO. 72J51	
		ILLINOIS	FED. AID PROJECT	

STATE OF ILLINOIS  
DEPARTMENT OF TRANSPORTATION

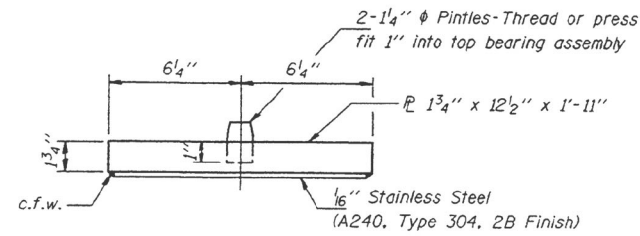
ROUTE NO.	SECTION	COUNTY	DATE	SHEET NO.	SHEET NO. 33 62 SHEETS
FAP 658	K(B)-D	MENARD	198	66	
FED. ROAD DIST. NO. 7	ILLINOIS	FED. AID PROJECT			



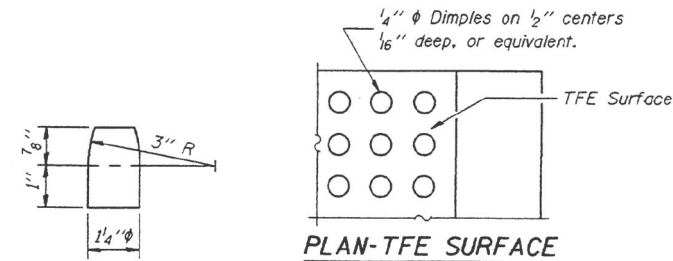
**TYPE II TFE ELASTOMERIC EXP. BRG.**



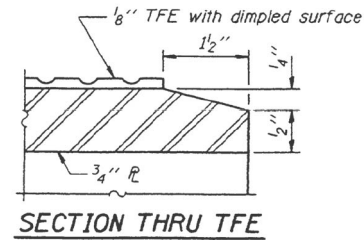
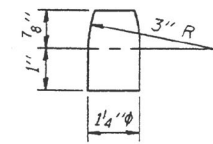
**TYPE II TFE ELASTOMERIC EXP. BRG.**



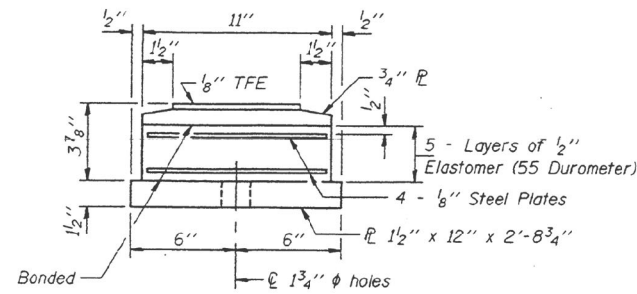
**TOP BEARING ASSEMBLY**



**PINTLE**



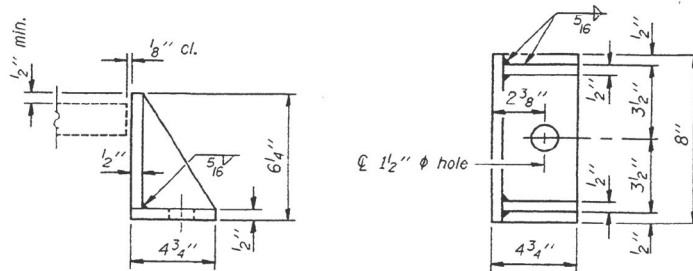
Notes: After beams have been erected holes at expansion bearings shall be drilled and anchor bolts grouted in place. For anchor bolt installation, see sheet 38 of 62.



**BOTTOM BEARING ASSEMBLY**

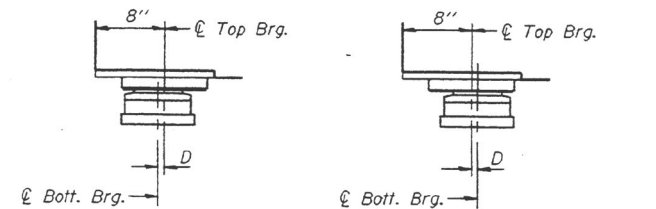
Note: The 1/8" TFE sheet shall be bonded directly to the top steel plate with a two-component, medium viscosity epoxy resin, conforming to the requirements of the Federal Specification MMM-A-134, Type I. The bond agent shall be applied on the full area of the contact surfaces.

Bonding of 1/8" TFE sheet during vulcanizing process will be permitted provided the process and method of adjusting assembly height is approved by the Engineer.



**SIDE RETAINER**

Equivalent rolled angle with stiffeners will be allowed in lieu of welded plates. Weight included with Furnishing & Erecting Structural Steel.



**SETTING ANCHOR BOLTS AT EXP. BRG.**

D=1/8" per each 100' of expansion for every 15° temp. change from the normal temp. of 50°F.

**BILL OF MATERIAL**

Item	Unit	Total
Elastomeric Bearing Assembly, Type II	Each	18

**BEARING DETAILS**  
 F.A.P. ROUTE 658 - SECTION K(B-1)  
 MENARD COUNTY  
 STATION 756+89.12  
 STRUCTURE NO. 065-0501

DESIGNED	Mike J. Trello	EXAMINED	Theresa J. Donagallo
CHECKED	Chad E. Hodel	APPROVED	Ralph E. Anderson
DRAWN	R. Doty/h.t. parsons		
CHECKED	MJT/CEH		

Feb. 4, 2002

USER NAME	= dudleybm
PLOT SCALE	= 100,0000' / in.
PLOT DATE	= 5/6/2020

DESIGNED	-
DRAWN	-
CHECKED	-
DATE	-

REVISED	-
REVISED	-
REVISED	-
REVISED	-

STATE OF ILLINOIS  
DEPARTMENT OF TRANSPORTATION

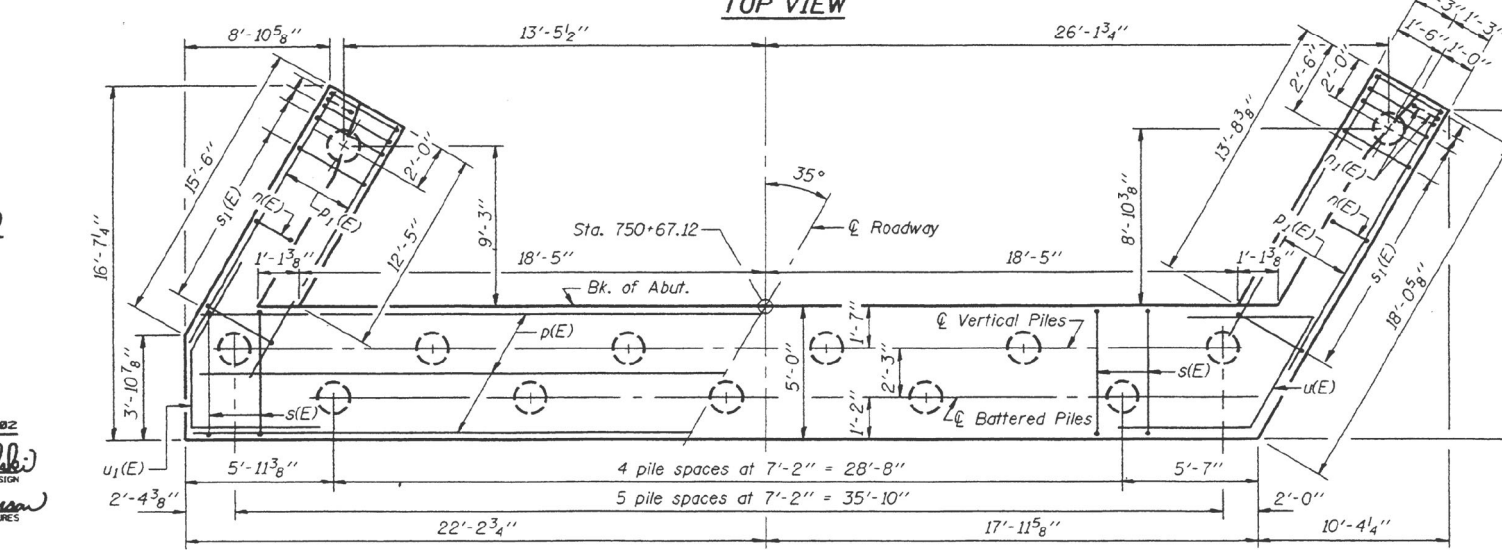
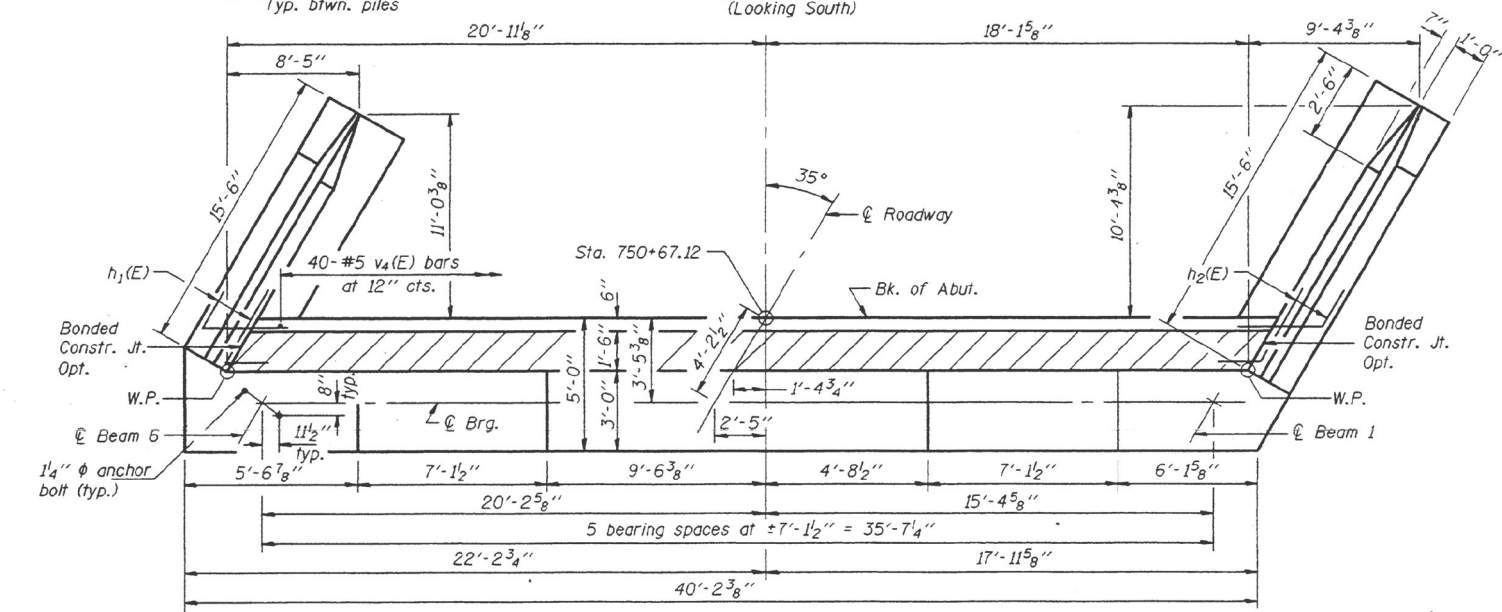
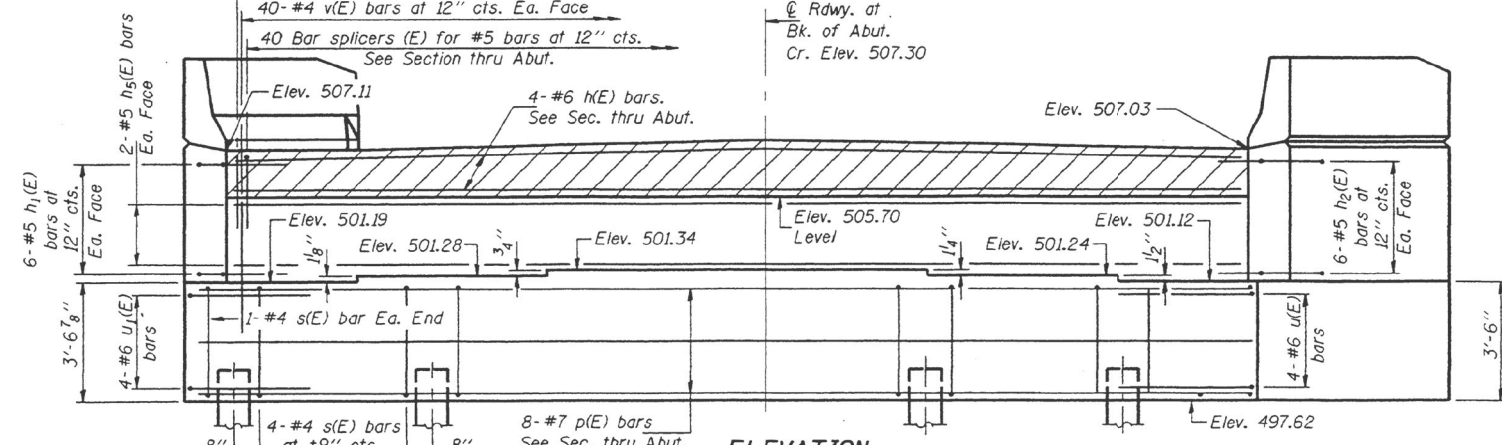
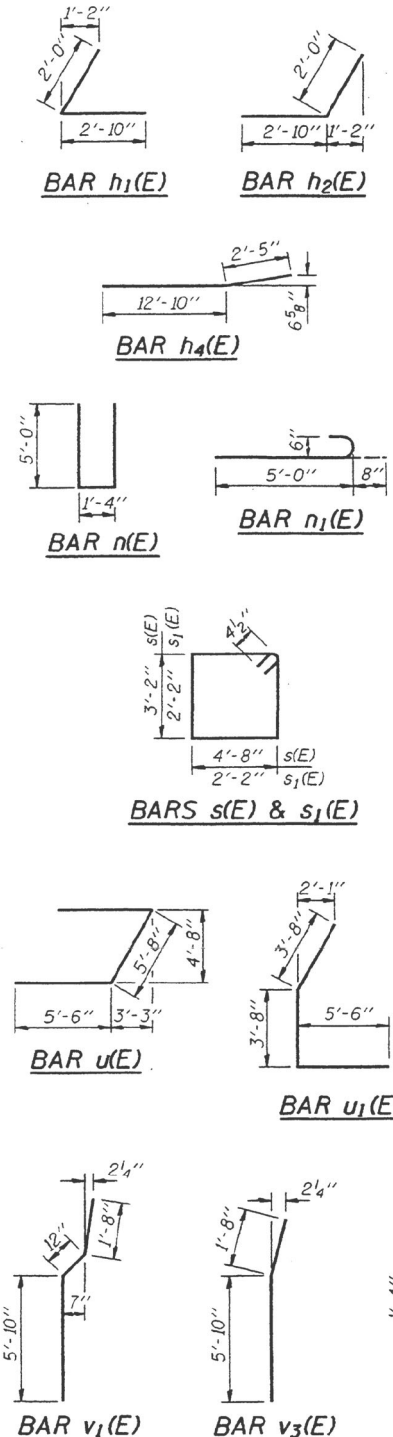
EXISTING PLANS, SN 065-0501  
(FOR INFORMATION ONLY)

SCALE: SHEET 7 OF 12 SHEETS STA. TO STA.

F.A.P. RTE.	SECTION	COUNTY	TOTAL SHEETS	SHEET NO.
658	(F) BDR, BJR, BRR, BC	MASON	15	10
CONTRACT NO. 72J51				
ILLINOIS FED. AID PROJECT				

ROUTE NO.	SECTION	COUNTY	SHEET	SHEET NO.
FAP 658	K(B)-D	MENARD	198	72
FED. ROAD DIST. NO. 7	ILLINOIS	FED. AID PROJECT		62 SHEETS

STATE OF ILLINOIS  
DEPARTMENT OF TRANSPORTATION



**PILE DATA**

Type: 12"  $\phi$ , 1/4" wall Metal Shell

Capacity: 55 Tons

Est. Length: 80'

No. Required: 12 + 1 Test pile

**BILL OF MATERIAL**

Bar	No.	Size	Length	Shape
$n(E)$	4	#6	38'-9"	
$h_1(E)$	12	#5	4'-10"	
$h_2(E)$	12	#5	4'-10"	
$h_3(E)$	26	#4	15'-2"	
$h_4(E)$	18	#4	15'-3"	
$h_5(E)$	4	#5	38'-9"	
$n(E)$	26	#6	11'-4"	
$n_1(E)$	12	#6	5'-8"	
$p(E)$	8	#7	39'-10"	
$p_1(E)$	12	#7	15'-2"	
$s(E)$	42	#4	16'-5"	
$s_1(E)$	32	#4	9'-5"	
$u(E)$	4	#6	16'-8"	
$u_1(E)$	4	#6	12'-10"	
$v(E)$	80	#4	6'-2"	
$v_1(E)$	26	#6	8'-6"	
$v_2(E)$	32	#6	8'-5"	
$v_3(E)$	6	#6	7'-6"	
$v_4(E)$	40	#5	3'-3"	
$v_5(E)$	40	#4	3'-4"	
Concrete Structures	Cu. Yd.		59.8	
Reinforcement Bars, Epoxy Coated	Pound		4730	
Furnishing Metal Pile Shells 12"	Foot		960	
Driving and Filling Shells	Foot		960	
Test Pile Metal Shells	Each		1	

Reinforcement bars designated (E) shall be epoxy coated.

**SOUTH ABUTMENT**  
F.A.P. ROUTE 658 - SECTION K(B)-D  
MENARD COUNTY  
STATION 756+89.12  
STRUCTURE NO. 065-0501

DESIGNED	Mike J. Trello	EXAMINED	Thomas J. Demagala ENGINEER OF BRIDGE DESIGN
CHECKED	Chad E. Hodel	PASSED	Robert E. Anderson ENGINEER OF BRIDGES AND STRUCTURES
DRAWN	R. Doty/h.t. parsons		
CHECKED	MJT/CEH		

Feb. 4, 2002

USER NAME	= dudleybm	DESIGNED	-	REVISED	-
PLOT SCALE	= 100.0000' / in.	DRAWN	-	REVISED	-
PLOT DATE	= 5/6/2020	CHECKED	-	REVISED	-
		DATE	-	REVISED	-

STATE OF ILLINOIS  
DEPARTMENT OF TRANSPORTATION

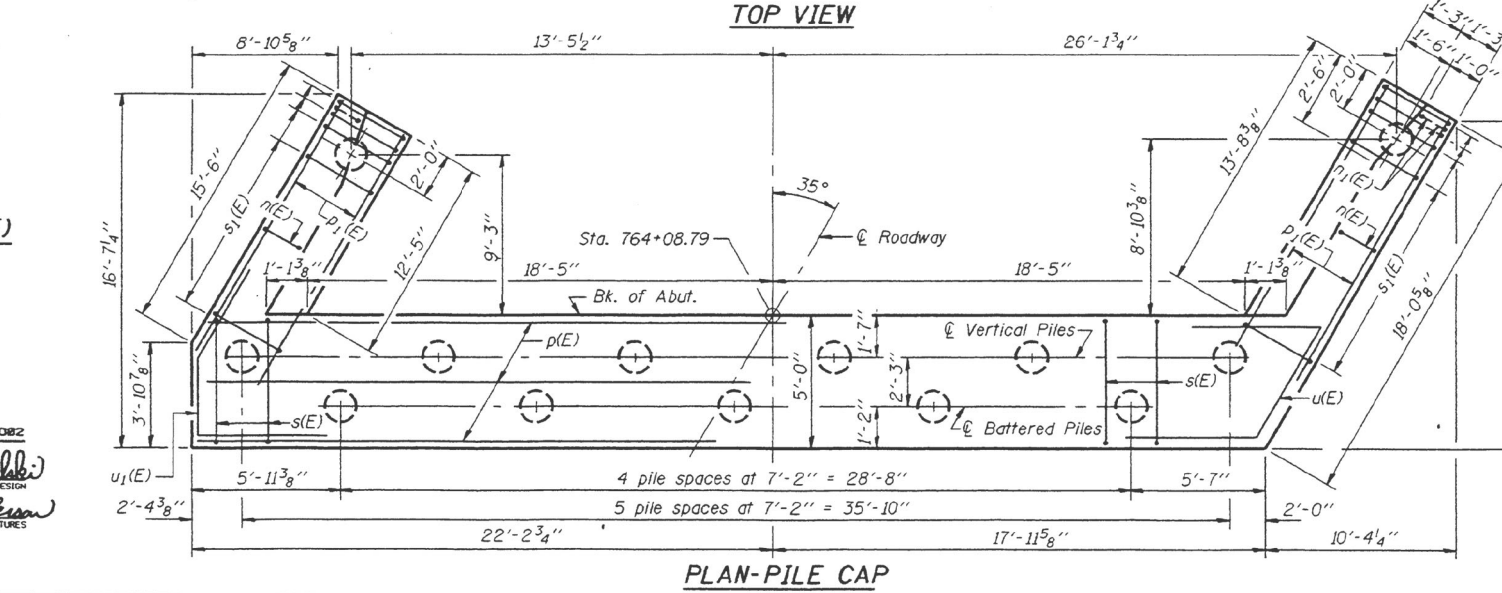
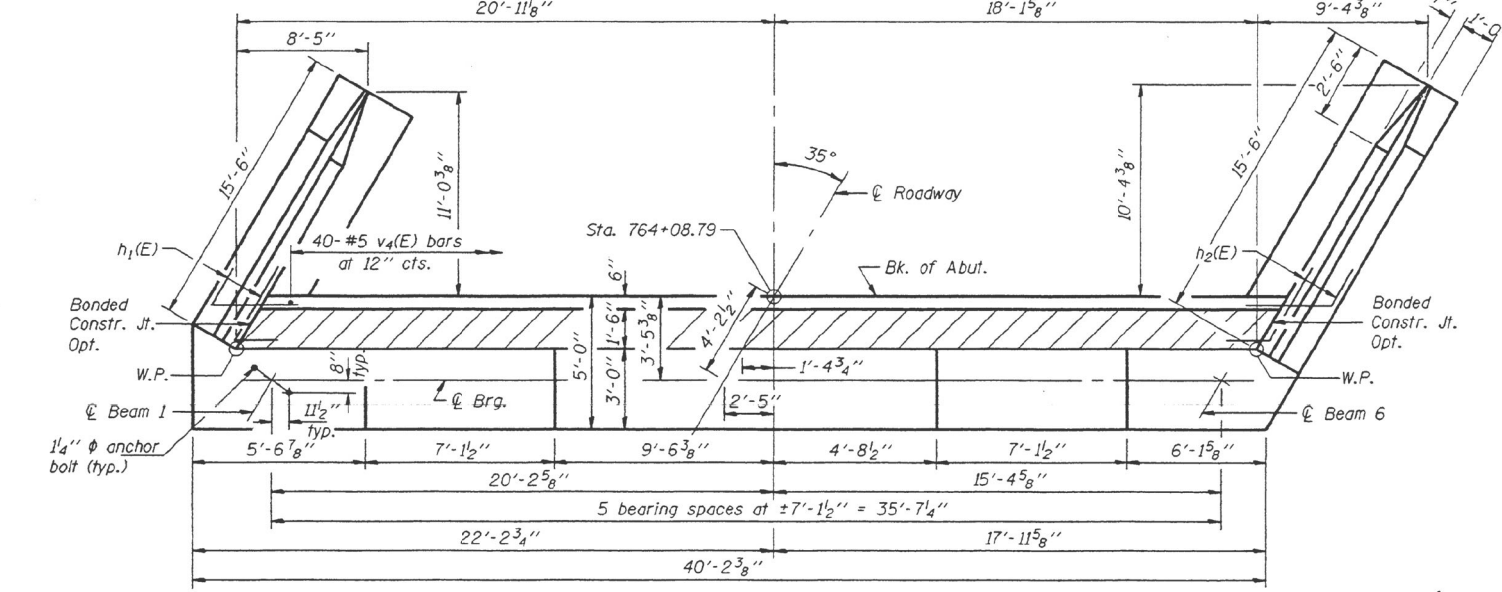
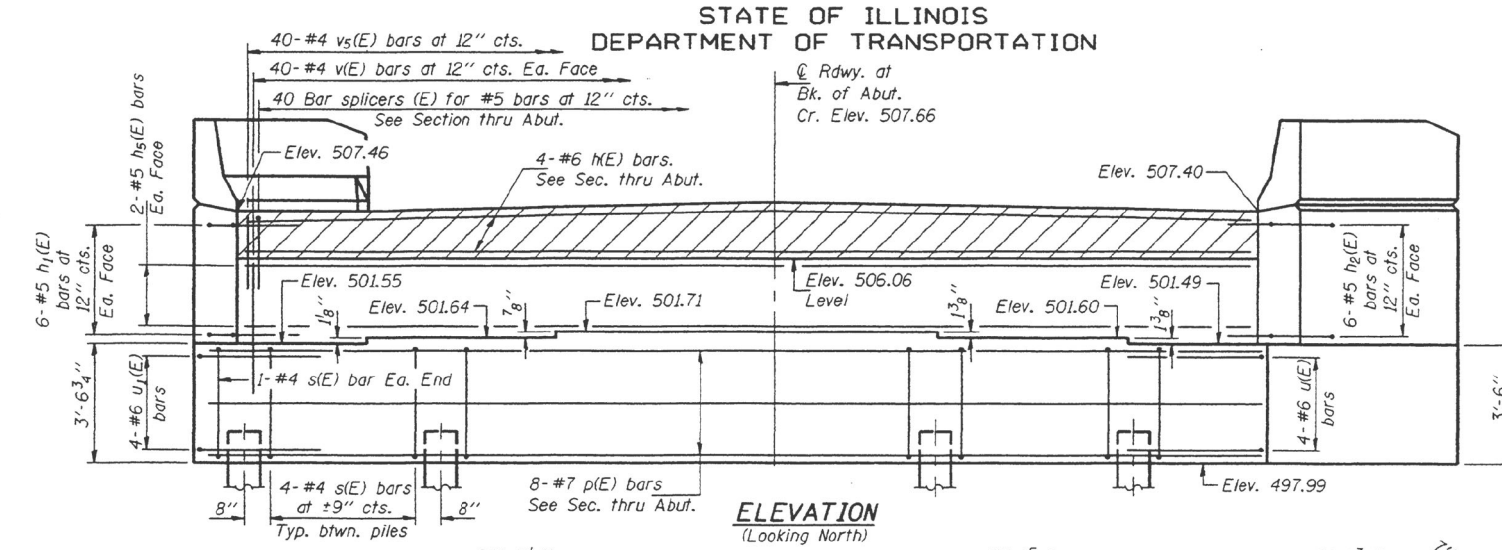
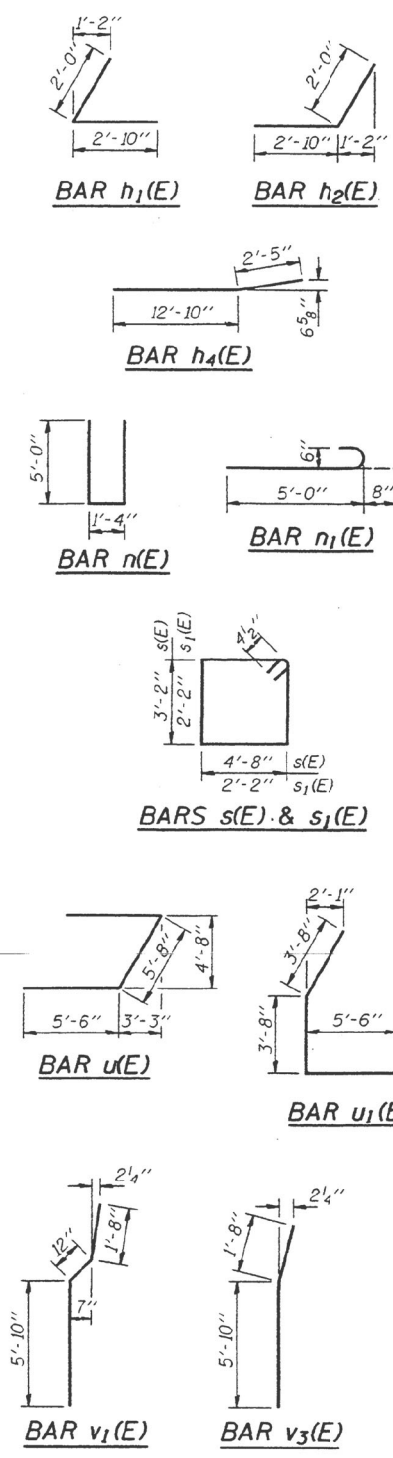
EXISTING PLANS, SN 065-0501  
(FOR INFORMATION ONLY)

SCALE: SHEET 8 OF 12 SHEETS STA. TO STA.

F.A.P. RTE.	SECTION	COUNTY	TOTAL SHEETS	SHEET NO.
658	(F) BDR, BJR, BRR, BC	MASON	15	11
CONTRACT NO. 72J51				
ILLINOIS FED. AID PROJECT				

MODEL: Default FILE NAME: C:\CENTRAL\DESIGN\OPERATIONS\Bridges\BldgPlans\_CAD\072J51 - 0650501\_patching\_and\_halfplans\sheet.dwg

STATE OF ILLINOIS  
DEPARTMENT OF TRANSPORTATION



PILE DATA

Type: 12"  $\phi$ , 1/4" wall Metal Shell  
Capacity: 55 Tons  
Est. Length: 71'  
No. Required: 12 + 1 test pile

BILL OF MATERIAL

Bar	No.	Size	Length	Shape
h(E)	4	#6	38'-9"	
h1(E)	12	#5	4'-10"	
h2(E)	12	#5	4'-10"	
h3(E)	26	#4	15'-2"	
h4(E)	18	#4	15'-3"	
h5(E)	4	#5	38'-9"	
n(E)	26	#6	11'-4"	
n1(E)	12	#6	5'-8"	
p(E)	8	#7	39'-10"	
p1(E)	12	#7	15'-2"	
s(E)	42	#4	16'-5"	
s1(E)	32	#4	9'-5"	
u(E)	4	#6	16'-8"	
u1(E)	4	#6	12'-10"	
v(E)	80	#4	6'-2"	
v1(E)	26	#6	8'-6"	
v2(E)	32	#6	8'-5"	
v3(E)	6	#6	7'-6"	
v4(E)	40	#5	3'-3"	
v5(E)	40	#4	3'-4"	

Concrete Structures	Cu. Yd.	59.8
Reinforcement Bars, Epoxy Coated	Pound	4730
Furnishing Metal Pile Shells 12"	Foot	852
Driving and Filling Shells	Foot	852
Test Pile Metal Shells	Each	1

Reinforcement bars designated (E) shall be epoxy coated.

NORTH ABUTMENT  
F.A.P. ROUTE 658 - SECTION K(B)-I  
MENARD COUNTY  
STATION 756+89.12  
STRUCTURE NO. 065-0501

DESIGNED	Mike J. Trello	EXAMINED	Thomas J. Demagala ENGINEER OF RECORD
CHECKED	Chad E. Hodel	PASSED	Ralph E. Anderson ENGINEER OF BRIDGES AND STRUCTURES
DRAWN	R. Doty/n.t. parsons	APPROVED	
CHECKED	MJT/CEH		

Feb. 4, 2022

USER NAME = dudleybm	DESIGNED -	REVISED -
PLOT SCALE = 100,0000' / in.	DRAWN -	REVISED -
PLOT DATE = 5/6/2020	CHECKED -	REVISED -
	DATE -	REVISED -

STATE OF ILLINOIS  
DEPARTMENT OF TRANSPORTATION

EXISTING PLANS, SN 065-0501  
(FOR INFORMATION ONLY)

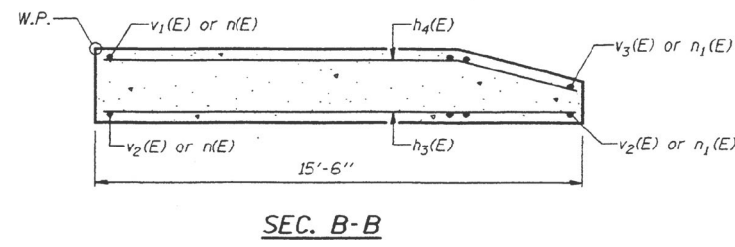
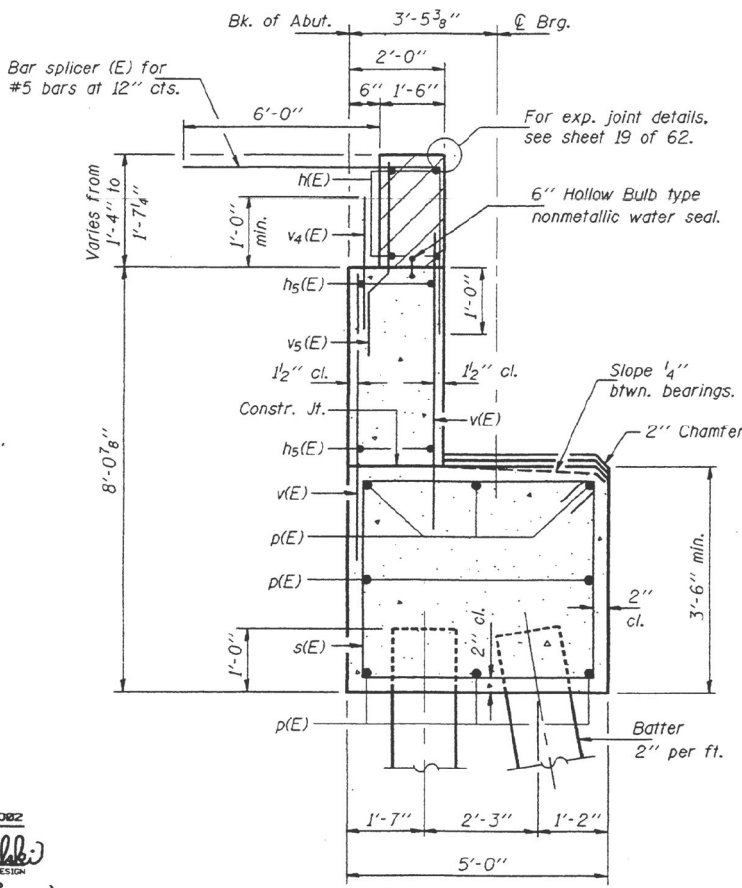
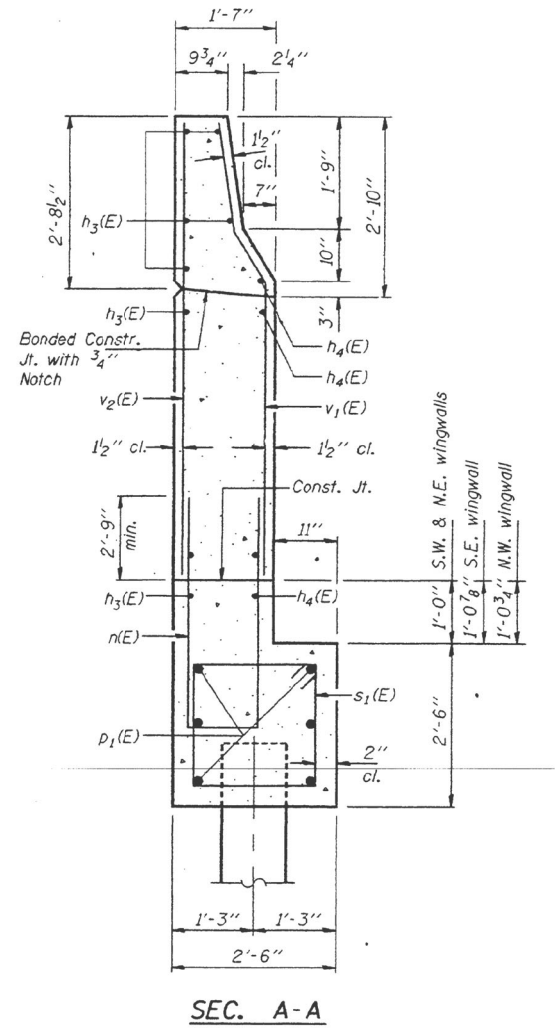
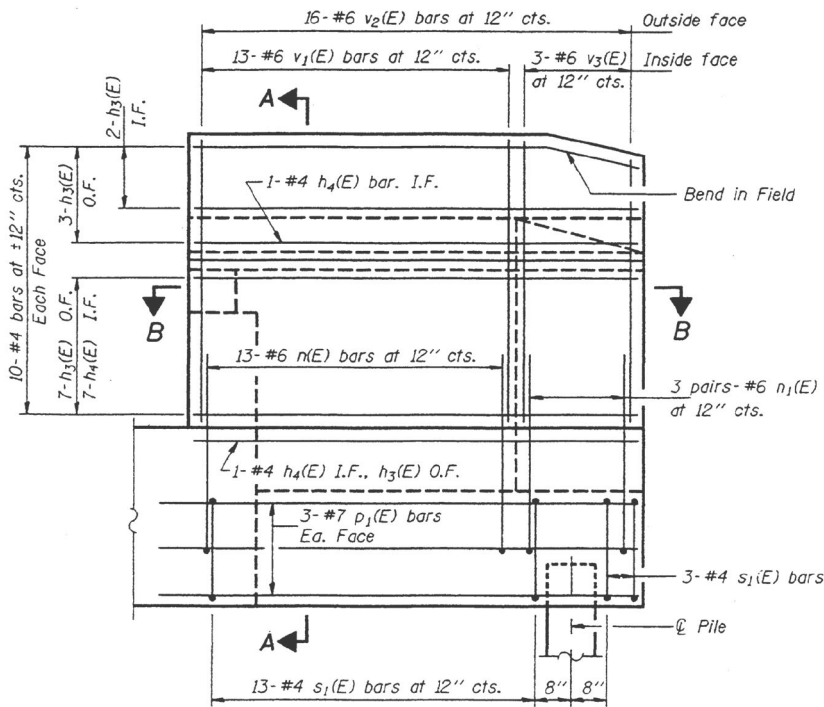
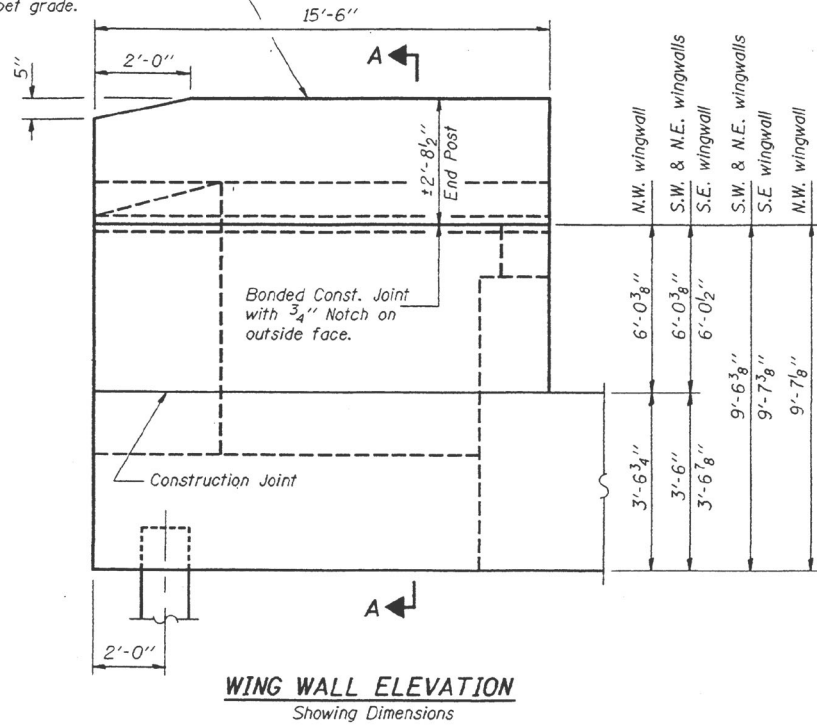
SCALE: SHEET 9 OF 12 SHEETS STA. TO STA.

F.A.P. RTE.	SECTION	COUNTY	TOTAL SHEETS	SHEET NO.
658	(F) BDR, BJR, BRR, BC	MASON	15	12
CONTRACT NO. 72J51				
ILLINOIS FED. AID PROJECT				

STATE OF ILLINOIS  
DEPARTMENT OF TRANSPORTATION

ROUTE NO.	SECTION	COUNTY	SHEET NO.	SHEET NO.
FAP 658	K(B-1)	MENARD	198	74
SHEET NO. 41				
62 SHEETS				

End post shall be poured after bridge parapet is in place. Form top surface to match parapet grade.



Notes:  
Hatched area to be poured after superstructure forms have been removed. Quantity of concrete included with High Performance Concrete Superstructure.  
Space reinforcement in cap to miss anchor bolts.  
Pour steps monolithically with cap.  
Reinforcement bars designated (E) shall be epoxy coated.  
Quantity of concrete in end post included with High Performance Concrete Superstructure on sheets 15 & 17 of 62.  
Work this sheet with sheets 31 & 40 of 62.

**ABUTMENT DETAILS**  
F.A.P. ROUTE 658 - SECTION K(B-1)  
MENARD COUNTY  
STATION 756+89.12  
STRUCTURE NO. 065-0501

DESIGNED	Mike J. Trello	EXAMINED	Thomas J. Damagala
CHECKED	Chad E. Hadel	PASSED	Ronald J. Anderson
DRAWN	R. Doly/h.t. parsons	APPROVED	
CHECKED	MJT/CEH		

Feb. 4, 2002

USER NAME	= dudleybm
PLOT SCALE	= 100,0000' / in.
PLOT DATE	= 5/6/2020

DESIGNED	-	REVISED	-
DRAWN	-	REVISED	-
CHECKED	-	REVISED	-
DATE	-	REVISED	-

STATE OF ILLINOIS  
DEPARTMENT OF TRANSPORTATION

EXISTING PLANS, SN 065-0501  
(FOR INFORMATION ONLY)

SCALE: SHEET 10 OF 12 SHEETS STA. TO STA.

F.A.P. RTE.	SECTION	COUNTY	TOTAL SHEETS	SHEET NO.
658	(F) BDR, BJR, BRR, BC	MASON	15	13
CONTRACT NO. 72J51				
ILLINOIS FED. AID PROJECT				

MODEL: Default  
FILE NAME: \\CENTRALDB\OPERATIONS\Bridges\Bridges\CAD\72J51 - 0650501\_patching\_and\_bars\plansheet.dwg

Notes: Space reinforcement in top to miss anchor bolts  
 Four steps monolithically with cap.  
 For anchor bolt installation details see sheet 38 of 62.  
 Reinforcement bars designated (E) shall be epoxy coated.

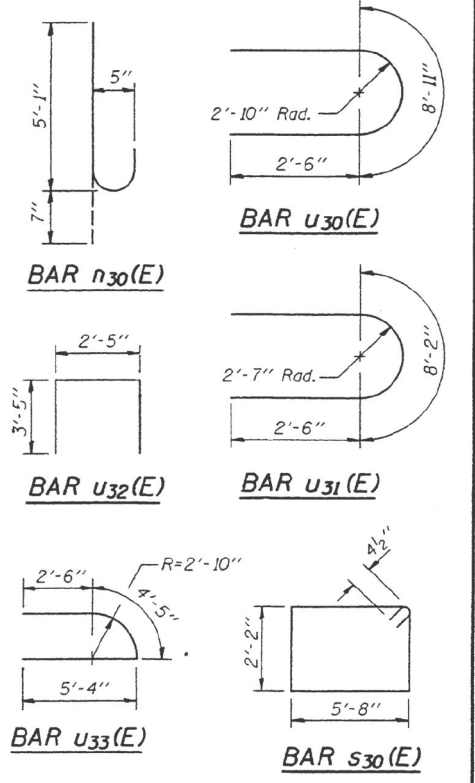
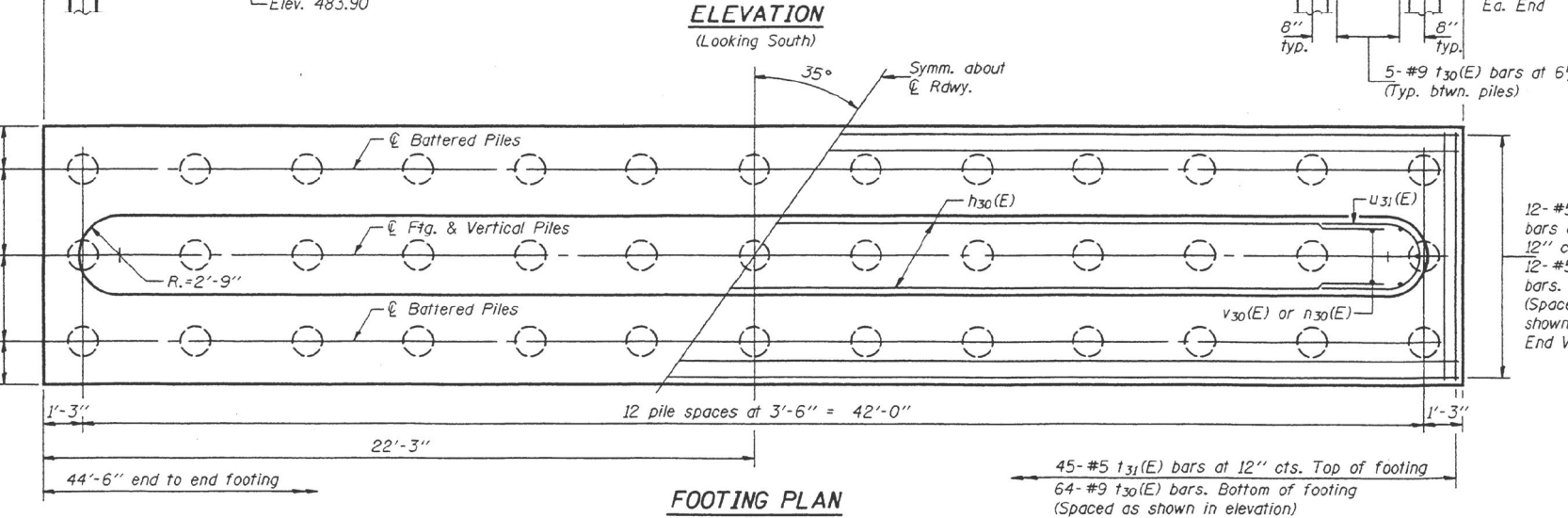
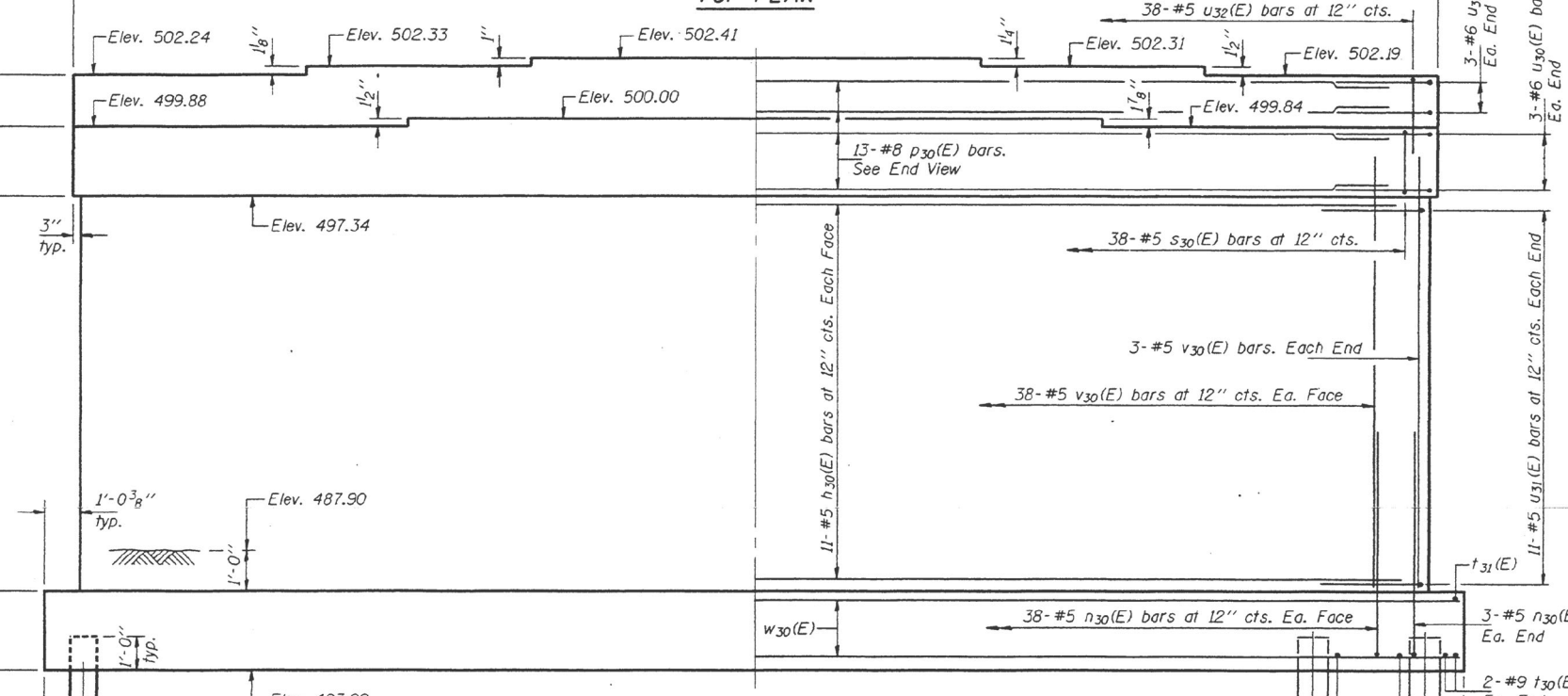
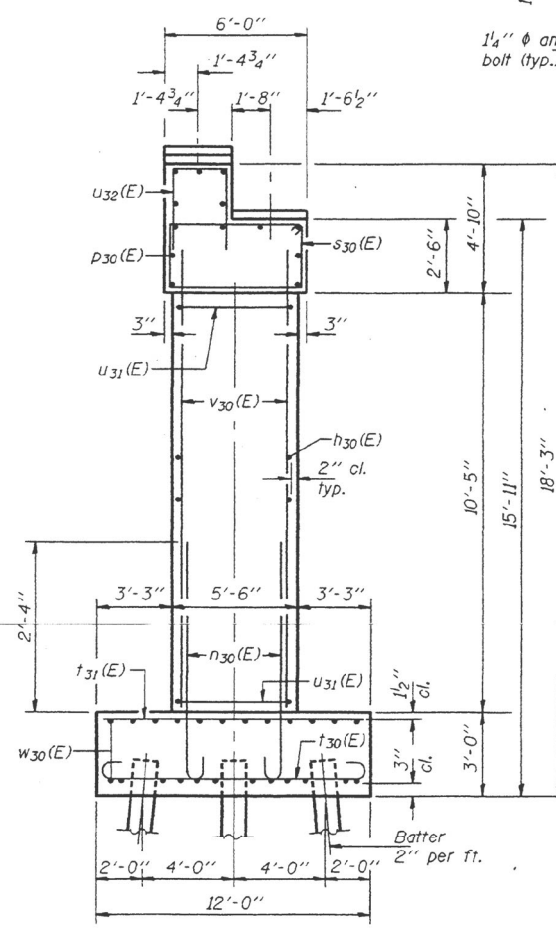
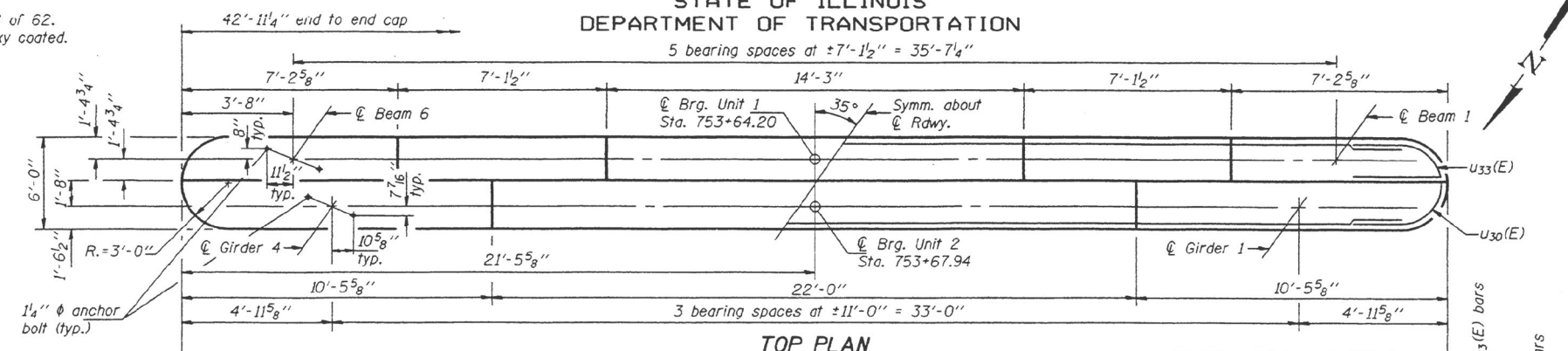
STATE OF ILLINOIS  
 DEPARTMENT OF TRANSPORTATION

ROUTE NO.	SECTION	COUNTY	STATION	SHEET	SHEET NO.
FAP 658	K(B)-1	MENARD	198	77	62 SHEETS
FEL. ROAD DIST. NO. 1		ILLINOIS	FED. AID PROJECT		

**PILE DATA**

Type: 12"  $\phi$ , 1/4" wall Metal Shell  
 Capacity: 35 Tons  
 Est. Length: 61'  
 No. Required: 39

**MIN. BAR LAP**  
 #5 bars = 2'-2"



**BILL OF MATERIAL**

Bar	No.	Size	Length	Shape
n30(E)	22	#5	37'-0"	—
n30(E)	82	#5	5'-8"	U
p30(E)	13	#8	37'-0"	—
s30(E)	38	#5	16'-5"	□
t30(E)	64	#9	14'-2"	U
t31(E)	45	#5	11'-8"	—
u30(E)	6	#6	13'-11"	U
u31(E)	22	#5	13'-2"	—
u32(E)	38	#5	9'-3"	U
u33(E)	6	#6	12'-3"	—
v30(E)	82	#5	11'-6"	—
w30(E)	24	#5	44'-2"	—
Concrete Structures			Cu. Yd.	183.4
Reinforcement Bars, Epoxy Coated			Pound	9890
Furnishing Metal Pile Shells 12"			Foot	2379
Driving and Filling Shells			Foot	2379

**PIER 3**  
**F.A.P. ROUTE 658 - SECTION K(B)-1**  
**MENARD COUNTY**  
**STATION 756+89.12**  
**STRUCTURE NO. 065-0501**

DESIGNED: Mike J. Trello  
 CHECKED: Chad E. Hodel  
 DRAWN: h.t. parsons  
 CHECKED: MJT/CEH

EXAMINED: Thomas J. Damalab  
 PASSED: Robert E. Anderson

Feb. 4, 2002

MODEL: Default  
 FILE NAME: C:\CONTRACTS\OPERATIONS\Bridges\Bridges\CAD\72J51 - 0650501\_pier3.dwg and tables\tablesheet.dwg

USER NAME = dudleybm	DESIGNED -	REVISED -
	DRAWN -	REVISED -
PLOT SCALE = 100,0000' / in.	CHECKED -	REVISED -
PLOT DATE = 5/6/2020	DATE -	REVISED -

STATE OF ILLINOIS  
 DEPARTMENT OF TRANSPORTATION

EXISTING PLANS, SN 065-0501  
 (FOR INFORMATION ONLY)

SCALE: SHEET 11 OF 12 SHEETS STA. TO STA.

F.A.P. RTE.	SECTION	COUNTY	TOTAL SHEETS	SHEET NO.
658	(F) BDR, BJR, BRR, BC	MASON	15	14
CONTRACT NO. 72J51				
ILLINOIS FED. AID PROJECT				

Notes: Space reinforcement in top to miss anchor bolts  
 Pour steps monolithically with cap.  
 For anchor bolt installation details see sheet 38 of 62.  
 Reinforcement bars designated (E) shall be epoxy coated.

STATE OF ILLINOIS  
 DEPARTMENT OF TRANSPORTATION  
 5 bearing spaces at ±7'-1 1/2" = 35'-7 1/4"

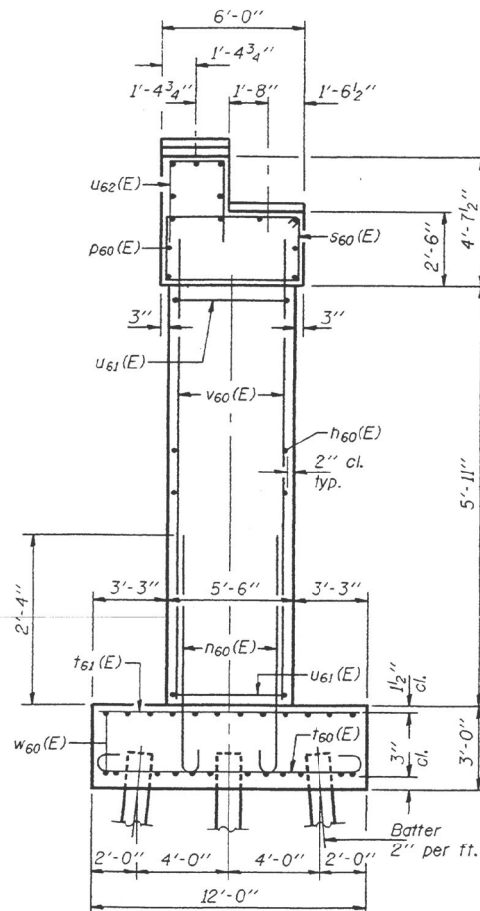
ROUTE NO.	SECTION	COUNTY	SHEETS	SHEET NO.	SHEET NO. 47
FAP 658	K(B-1)	MENARD	198	80	62 SHEETS
FED. ROAD DIST. NO. 7	ALIGNED	FED. AID PROJECT			

**PILE DATA**

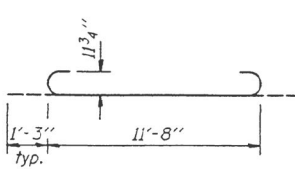
Type: 12"  $\phi$ , 1/4" wall Metal Shell  
 Capacity: 35 Tons  
 Est. Length: 43'  
 No. Required: 39

**MIN. BAR LAP**

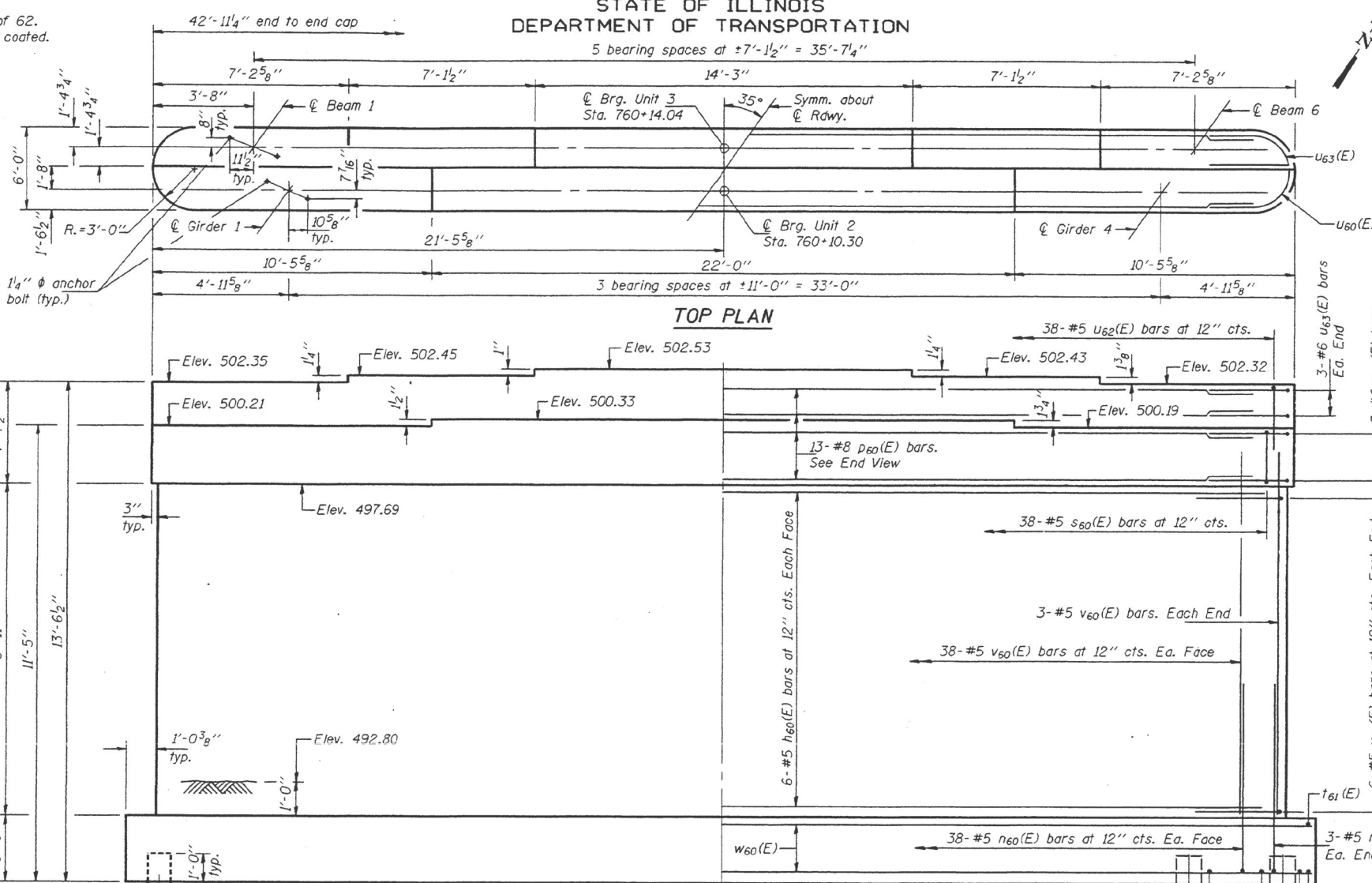
#5 bars = 2'-2"



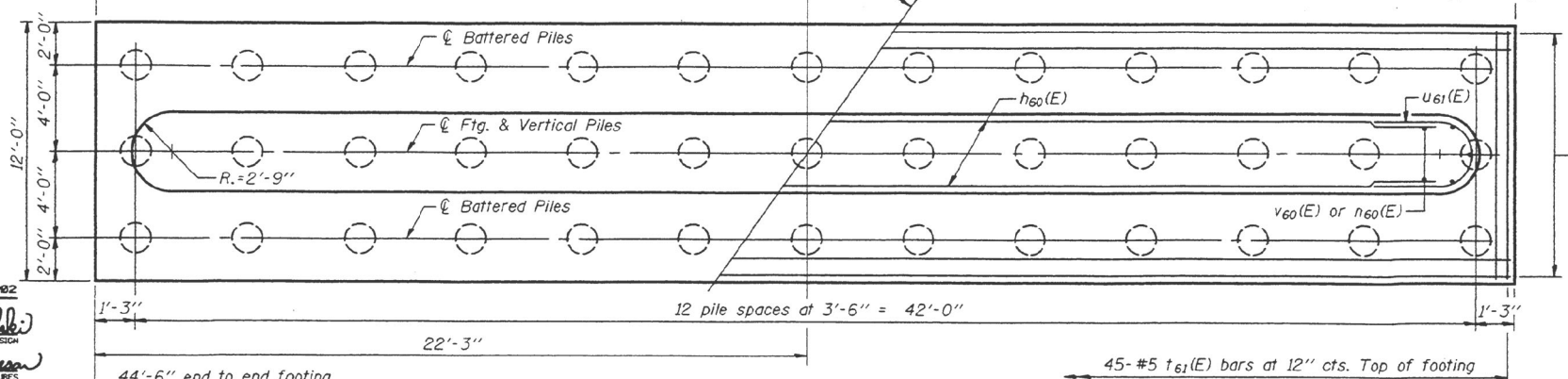
**END VIEW**



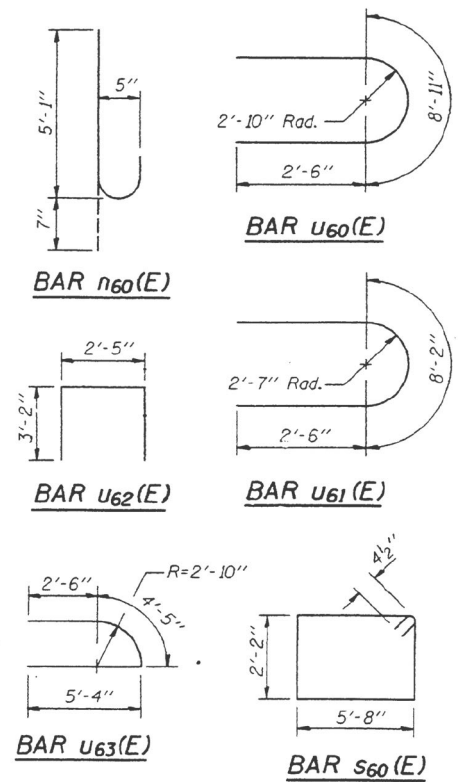
**BAR t60(E)**



**ELEVATION**  
 (Looking North)



**FOOTING PLAN**



**BILL OF MATERIAL**

Bar	No.	Size	Length	Shape
n60(E)	12	#5	37'-0"	—
n60(E)	82	#5	5'-8"	U
p60(E)	13	#8	37'-0"	—
s60(E)	38	#5	16'-5"	□
t60(E)	64	#9	14'-2"	U
t61(E)	45	#5	11'-8"	—
u60(E)	6	#6	13'-11"	U
u61(E)	12	#5	13'-2"	U
u62(E)	38	#5	8'-9"	U
u63(E)	6	#6	12'-3"	U
v60(E)	82	#5	7'-0"	—
w60(E)	24	#5	44'-2"	—
Concrete Structures		Cu. Yd.	144.5	
Reinforcement Bars, Epoxy Coated		Pound	8960	
Furnishing Metal Pile Shells 12"		Foot	1677	
Driving and Filling Shells		Foot	1677	

**PIER 6**  
 F.A.P. ROUTE 658 - SECTION K(B-1)  
 MENARD COUNTY  
 STATION 756+89.12  
 STRUCTURE NO. 065-0501

DESIGNED	Mike J. Trello	EXAMINED	Thomas J. Demagallo
CHECKED	Chad E. Hodel	PASSED	Ronald E. Carlson
DRAWN	h.t. parsons		
CHECKED	MJT/CEH		

Feb. 4, 2002  
 ENGINEER OF BRIDGES AND STRUCTURES

USER NAME = dudleybm	DESIGNED -	REVISED -
PLOT SCALE = 100,0000' / in.	DRAWN -	REVISED -
PLOT DATE = 5/6/2020	CHECKED -	REVISED -
	DATE -	REVISED -

STATE OF ILLINOIS  
 DEPARTMENT OF TRANSPORTATION

EXISTING PLANS, SN 065-0501  
 (FOR INFORMATION ONLY)

SCALE: SHEET 12 OF 12 SHEETS STA. TO STA.

F.A.P. RTE.	SECTION	COUNTY	TOTAL SHEETS	SHEET NO.
658	(F) BDR, BJR, BRR, BC	MASON	15	15
			CONTRACT NO. 72J51	

ILLINOIS FED. AID PROJECT

MODEL: Default  
 FILE NAME: C:\CONTRACTS\OPERATIONS\Bridges\Bridges\_CAD\72J51 - 0650501\_patching\_and\_bars\plans\sheet.dwg