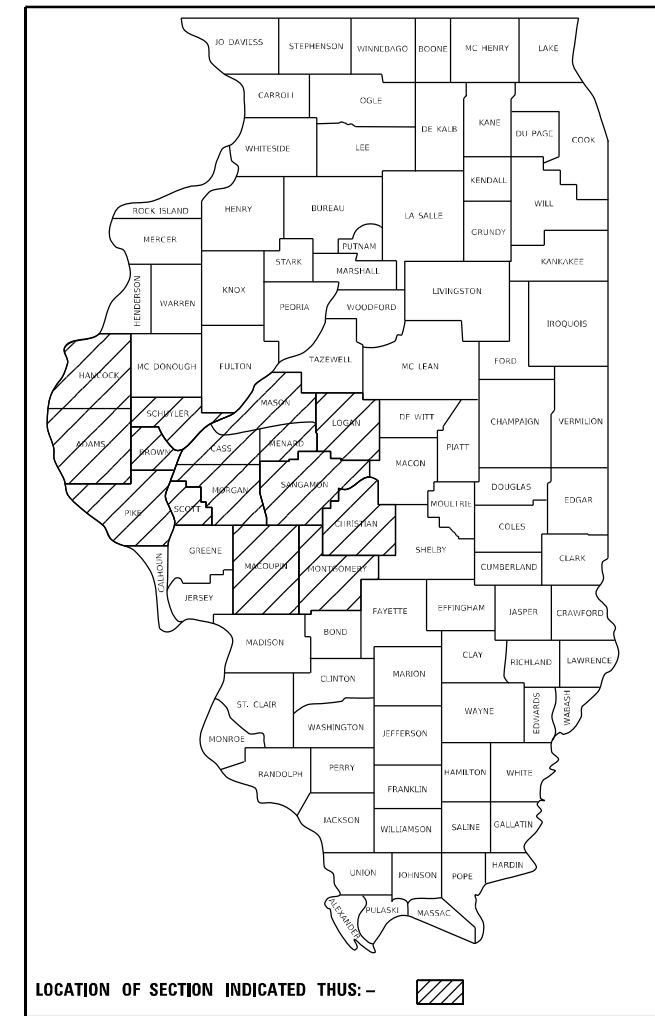


STATE OF ILLINOIS  
DEPARTMENT OF TRANSPORTATION

F.A. RTE.	SECTION	COUNTY	TOTAL SHEETS	SHEET NO.
**VAR	**	VARIOUS	5	1
		ILLINOIS	CONTRACT NO. 72M09	

\*\*D6 CABLE/GUARDRAIL REPAIR 2021

D-96-077-20



# PROPOSED HIGHWAY PLANS

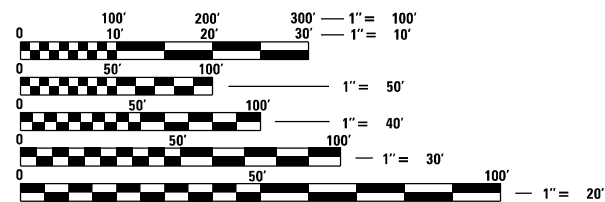
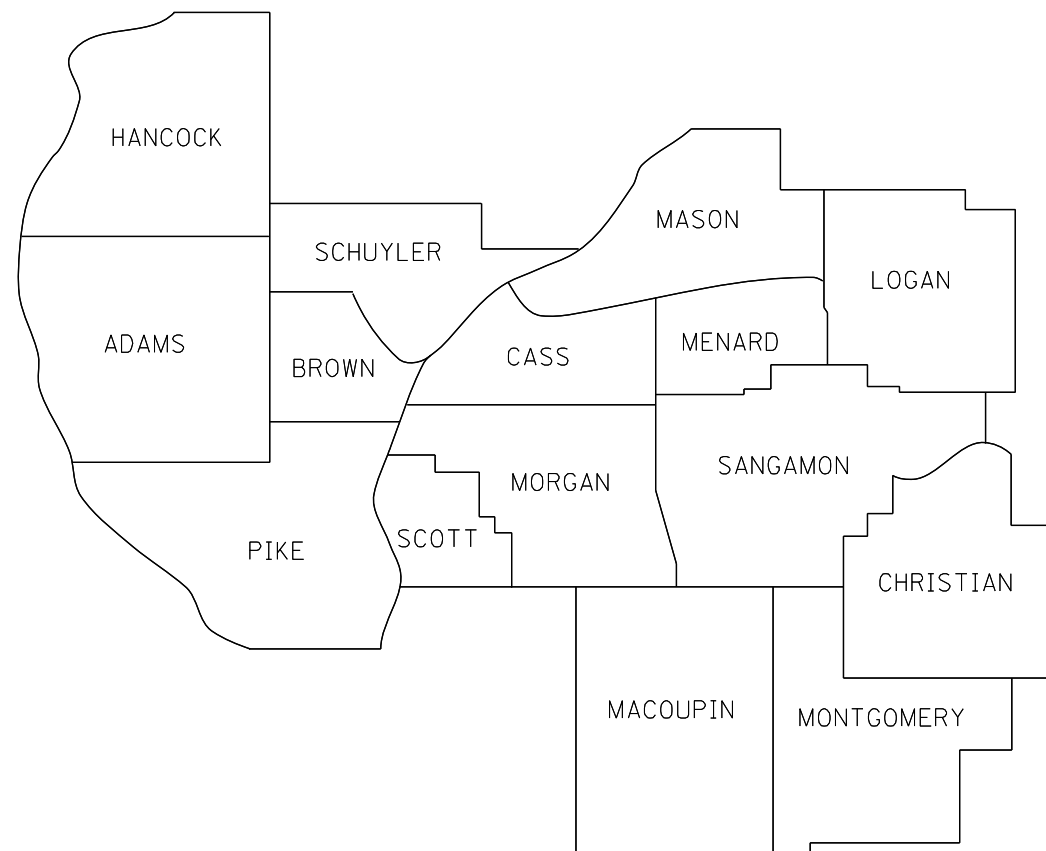
VARIOUS ROUTES  
SECTION D6 CABLE/GUARDRAIL REPAIR 2021  
CABLE & GUARDRAIL REPAIR  
VARIOUS COUNTIES IN D6  
C-96-107-20

FOR INDEX OF SHEETS, SEE SHEET NO. 2

INDEX OF SHEETS

- 1 COVER SHEET
- 2 GENERAL NOTES
- 3-5 SUMMARY OF QUANTITIES
- 6 CABLE GUARD MARKER DETAIL

FOR LIST OF STANDARDS, SEE SHEET 2



FULL SIZE PLANS HAVE BEEN PREPARED USING STANDARD ENGINEERING SCALES. REDUCED SIZED PLANS WILL NOT CONFORM TO STANDARD SCALES. IN MAKING MEASUREMENTS ON REDUCED PLANS, THE ABOVE SCALES MAY BE USED.

J.U.L.I.E.  
JOINT UTILITY LOCATION INFORMATION FOR EXCAVATION  
1-800-892-0123  
OR 811

PROJECT ENGINEER : JAY EDWARDS (217)-785-0597  
PROJECT MANAGER : JONATHAN COX (217)-782-1378

CONTRACT NO. 72M09

STATE OF ILLINOIS  
DEPARTMENT OF TRANSPORTATION

SUBMITTED May 8 2020

REGIONAL ENGINEER

June 26, 2020 ENGINEER OF DESIGN AND ENVIRONMENT

June 26, 2020 DIRECTOR OF HIGHWAYS PROJECT IMPLEMENTATION

PRINTED BY THE AUTHORITY  
OF THE STATE OF ILLINOIS





CODE NO.	ITEM	UNIT	TOTAL QUANTITY	0-02175-6002	MCHD FUNDS	0-0187-60001
				VARIOUS GR	100% MCHD	MED CBL BAR
				100% STATE	ROADWAY	100% STATE
				ROADWAY	ROADWAY	ROADWAY
				0021	0021	0021
				RURAL	RURAL	RURAL
70100420	TRAFFIC CONTROL AND PROTECTION, STANDARD 701411	EACH	2	1	1	
72501000	TERMINAL MARKER - DIRECT APPLIED	EACH	35	20	15	
78200005	GUARDRAIL REFLECTORS, TYPE A	EACH	80	40	40	
78200021	HIGH TENSION CABLE MEDIAN BARRIER REFLECTORS	EACH	200		100	100
X0325899	REPAIR HIGH TENSION CABLE (GIBRALTAR)	FOOT	20		10	10
X0325900	REPAIR HIGH TENSION BARRIER TERMINAL (GIBRALTAR)	EACH	5		3	2
X0325901	REPAIR POSTS (GIBRALTAR)	EACH	98		50	48
X0325902	REMOVE AND REPLACE POSTS (GIBRALTAR)	EACH	200		150	50
X0327490	REPAIR HIGH TENSION CABLE (NU-CABLE)	FOOT	20		10	10
X0327491	REPAIR POSTS (NU-CABLE)	EACH	20		10	10
X0327492	REMOVE AND REPLACE POSTS (NU-CABLE)	EACH	331		221	110
X0327493	REPAIR HIGH TENSION BARRIER TERMINAL (NU-CABLE)	EACH	2		1	1
X6300155	STEEL PLATE BEAM GUARDRAIL, ATTACHED TO STRUCTURES (SPECIAL)	FOOT	80	50	30	
X6431220	REMOVE AND REPLACE IMPACT ATTENUATOR SAND MODULE	EACH	55	21	34	

MODEL: Default  
 FILE: Mchd - P:\uplanroom.dat:illinois.gov:PWIDOT\Documents\DOT\_Offices\District\_8\Projects\DE72M09\CAD\Drawn\CADsheets\DE72M09-sht-500.dgn

USER NAME = coxjw	DESIGNED -	REVISED -
	DRAWN -	REVISED -
PLOT SCALE = 100.0000 ' / in.	CHECKED -	REVISED -
PLOT DATE = 5/6/2020	DATE -	REVISED -

**STATE OF ILLINOIS  
DEPARTMENT OF TRANSPORTATION**

**SUMMARY OF QUANTITIES**

SCALE: SHEET 2 OF 3 SHEETS STA. TO STA.

F.A. RTE.	SECTION	COUNTY	TOTAL SHEETS	SHEET NO.
	*	VARIOUS	5	4
			CONTRACT NO. 72M09	
			ILLINOIS FED. AID PROJECT	

\*D6 CABLE MEDIAN GUARDRAIL REPAIR 2021

CODE NO.	ITEM	UNIT	TOTAL QUANTITY	0-02175-6002	MCHD FUNDS	0-0187-60001
				VARIOUS GR	100% MCHD	MED CBL BAR
				100% STATE	ROADWAY	100% STATE
				ROADWAY	ROADWAY	ROADWAY
				0021	0021	0021
				RURAL	RURAL	RURAL
X7011834	TRAFFIC CONTROL AND PROTECTION, CALL OUT WORK	EACH	57	22	35	
X7011836	TRAFFIC CONTROL AND PROTECTION, FREEWAY/EXPRESSWAY, CALL OUT WORK	EACH	40	20	10	10
Z0008759	CALL OUT	EACH	9	6	2	1
Z0008760	EMERGENCY WORK CALL OUT	EACH	37	10	25	2
Z0052000	REPAIR STEEL PLATE BEAM GUARDRAIL, TYPE A	FOOT	3250	2150	1100	
Z0052410	REPAIR TRAFFIC BARRIER TERMINAL, TYPE 1 SPECIAL (TANGENT)	EACH	80	40	40	
Z0052415	REPAIR TRAFFIC BARRIER TERMINAL, TYPE 1 SPECIAL (FLARED)	EACH	3	2	1	
Z0052600	REPAIR TRAFFIC BARRIER TERMINAL, TYPE 2	EACH	3	2	1	
Z0053000	REPAIR TRAFFIC BARRIER TERMINAL, TYPE 5	EACH	3	2	1	
Z0053200	REPAIR TRAFFIC BARRIER TERMINAL, TYPE 6	EACH	3	2	1	

MODEL: Default  
 FILE NAME: p:\pblancom.ddt\illinois.gov\PWIDOT\Documents\DOT Offices\District 6\Projects\0672M09\CADDData\CAD\Sheet\0672M09-shc-500.dgn

USER NAME = coxjw	DESIGNED -	REVISED -
	DRAWN -	REVISED -
PLOT SCALE = 100.0000 / in.	CHECKED -	REVISED -
PLOT DATE = 5/6/2020	DATE -	REVISED -

**STATE OF ILLINOIS  
DEPARTMENT OF TRANSPORTATION**

**SUMMARY OF QUANTITIES**

SCALE: SHEET 3 OF 3 SHEETS STA. TO STA.

F.A. RTE.	SECTION	COUNTY	TOTAL SHEETS	SHEET NO.
VAR	*	VARIOUS	5	5
		CONTRACT NO. 72M09		
[ ILLINOIS ] FED. AID PROJECT				