

| F.A.P. RTE. | SECTION | COUNTY | TOTAL SHEETS | SHEET NO. |
|-------------|---------------------------|--------|--------------------|-----------|
| 614 | (145RS-4,5RS-5,146RS-5)PP | CASS | 8 | 1 |
| | ILLINOIS | | CONTRACT NO. 72M15 | |

STATE OF ILLINOIS
DEPARTMENT OF TRANSPORTATION
DIVISION OF HIGHWAYS

**PROPOSED
HIGHWAY PLANS**

FAP 67, FAP 614 (IL 78, IL 175)
**CONTRACT MAINTENANCE
RESURFACING & PATCHING
CASS COUNTY**

C-96-113-20

SECTION (145RS-4, 5RS-5, 146RS-5) PP

FOR INDEX OF SHEETS, SEE SHEET NO. 2

IL 78 (2019)
ADT = 2050
SU = 70
MU = 3.6%

IL 125 (2019)
ADT = 2600
SU = 125
MU = 150

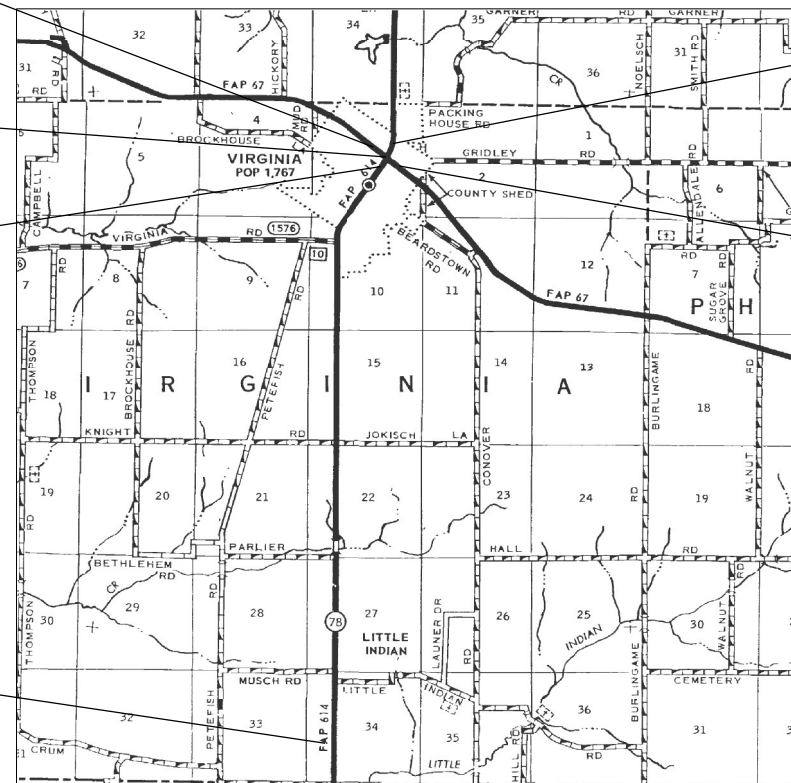
LOCATION 2 BEGINS
IL 125/78 JUNCTION
IL 125
STA. 443+90

STA. EQ. IL 78
368+78.59bk=
0+00.00AH

LOCATION 2 ENDS
IL 125/78 JUNCTION
IL 78
STA. 3+08.92

LOCATION 2 BEGINS
IL 125/78 JUNCTION
IL 78
STA. 365+00

LOCATION 2 BEGINS
IL 125/78 JUNCTION
IL 125
STA. 455+26



LOCATION MAP

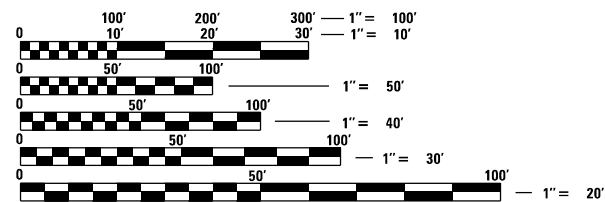
GROSS LENGTH = 2200 FT. = 0.417 MILE
NET LENGTH = 2200 FT. = 0.417 MILE

LOCATION 1 BEGINS
IL 78
STA. 295+25

LOCATION 1 ENDS
CASS-MORGAN CO LINE
IL 78
STA. 298+20



LOCATION OF SECTION INDICATED THUS: — ■ —



FULL SIZE PLANS HAVE BEEN PREPARED USING STANDARD ENGINEERING SCALES. REDUCED SIZED PLANS WILL NOT CONFORM TO STANDARD SCALES. IN MAKING MEASUREMENTS ON REDUCED PLANS, THE ABOVE SCALES MAY BE USED.

J.U.L.I.E.
JOINT UTILITY LOCATION INFORMATION FOR EXCAVATION
1-800-892-0123
OR 811

**PROJECT ENGINEER : MIKE IRWIN
PROJECT MANAGER : TIM SHARP**

CONTRACT NO. 72M15

STATE OF ILLINOIS
DEPARTMENT OF TRANSPORTATION
DIVISION OF HIGHWAYS

SUBMITTED May 27 2020

Jeff P. May
REGION ENGINEER

June 26, 2020
Scott A. Elk
ENGINEER OF DESIGN AND ENVIRONMENT

June 26, 2020
James J. ...
DIRECTOR OF HIGHWAYS PROJECT IMPLEMENTATION

**PRINTED BY THE AUTHORITY
OF THE STATE OF ILLINOIS**

INDEX OF SHEETS

| SHEET NO. | DESCRIPTION |
|-----------|--|
| 1. | COVER SHEET |
| 2. | INDEX OF SHEETS, STANDARDS, GENERAL NOTES & SIGNATURES |
| 3. | SUMMARY OF QUANTITIES |
| 4. | SCHEDULES |
| 5-6. | LOCATION MAP |
| 7-8. | TYPICAL SECTIONS |

STANDARDS

| STANDARD NO. | DESCRIPTION |
|--------------|--|
| 701101-05 | OFF-RD OPERATIONS, MULTILANE, 15'(4.5m) TO 24" (600mm) FROM EDGE OF PAVEMENT |
| 701106-02 | OFF-RD OPERATIONS, MULTILANE MORE THAN 15' (4.5m) AWAY |
| 701201-05 | LANE CLOSURE, 2L, 2W, DAY ONLY, FOR SPEEDS \geq 45 MPH |
| 701501-06 | URBAN LANE CLOSURE, 2L, 2W, UNDIVIDED |
| 701901-08 | TRAFFIC CONTROL DEVICES |

| | |
|---|--|
| STATE OF ILLINOIS DEPARTMENT OF TRANSPORTATION DIVISION OF HIGHWAYS DISTRICT 6 | |
| EXAMINED _____ 20____ | _____ 20____ ENGINEER OF OPERATIONS |
| EXAMINED _____ 20____ | _____ 20____ ENGINEER OF PROJECT IMPLEMENTATION |
| EXAMINED _____ 20____ | _____ 20____ ENGINEER OF PROGRAM DEVELOPMENT |

THE FOLLOWING RATES OF APPLICATION HAVE BEEN ASSUMED IN CALCULATING PLAN QUANTITIES:

| | |
|--|---|
| BITUMINOUS MATERIALS (TACK COAT) | 0.05 LBS/SQ FT (EX HMA, MILLED SURFACE) |
| HMA SURFACE/BINDER SHOULDERS (112 LBS) | 0.056 TON/SQUARE YARD - INCH (MIX A-C) |

| MIXTURE REQUIREMENTS | |
|----------------------|----------------|
| LOCATION | IL 125/78 |
| MIXTURE USE(S) | SURFACE COURSE |
| PG | PG 64-22 |
| DESIGN AIR VOIDS | 4.0% @ N50 |
| MIXTURE COMPOSITION | IL - 9.5 |
| FRICTION AGGREGATE | MIX "D" |
| QUALITY MANAGEMENT | QC/QA |
| SUBLOT SIZE | N/A |

MODEL DTP-048
FILE: \\P01\BENTLEY\PROJECTS\2015\115-125\115-125-112\115-125-112-112.dwg

| | | | | | | | | | |
|----------------------------|------------------|-----------------|---|--|--------------------------|-----------------------------|--------------|-----------|---|
| USER NAME = SHARPTD | DESIGNED - _____ | REVISED - _____ | STATE OF ILLINOIS DEPARTMENT OF TRANSPORTATION | INDEX OF SHEETS, HIGHWAY STANDARDS, GENERAL NOTES, & SIGNATURES | F.A.S. SECTION | COUNTY | TOTAL SHEETS | SHEET NO. | |
| PLOT SCALE = 57.4032' = 1" | DRAWN - _____ | REVISED - _____ | | | 614 | (145RS-4, 5RS-5, 146RS-5)PP | CASS | 8 | 2 |
| PLOT DATE = 5/27/2010 | CHECKED - _____ | REVISED - _____ | | | CONTRACT NO. 72M15 | | | | |
| | DATE - _____ | REVISED - _____ | SCALE: _____ | SHEET _____ OF _____ SHEETS | STA. _____ TO STA. _____ | ILLINOIS FED. AID PROJECT | | | |

0-02175-6010
100% STATE

| CODE NO. | ITEM | UNIT | TOTAL QUANTITY | ROADWAY |
|------------|--|--------|----------------|------------|
| | | | | 0005 RURAL |
| 40600290 | BITUMINOUS MATERIALS (TACK COAT) | POUND | 4021.0 | 4021 |
| 40604060 | HOT-MIX ASPHALT SURFACE COURSE, IL-9.5, MIX "D", N50 | TON | 751.0 | 751 |
| 44000155 | HOT-MIX ASPHALT SURFACE REMOVAL, 1 1/2" | SQ YD | 8937.0 | 8937 |
| 44200162 | PAVEMENT PATCHING, TYPE IV, 13 INCH | SQ YD | 100.0 | 100 |
| 67100100 | MOBILIZATION | L SUM | 1.0 | 1 |
| 70100450 | TRAFFIC CONTROL AND PROTECTION, STANDARD 701201 | L SUM | 1.0 | 1 |
| 70102620 | TRAFFIC CONTROL AND PROTECTION, STANDARD 701501 | L SUM | 1.0 | 1 |
| 70107025 | CHANGEABLE MESSAGE SIGN | CAL DA | 60.0 | 60 |
| 70300100 | SHORT TERM PAVEMENT MARKING | FOOT | 408.0 | 408 |
| 70300150 | SHORT TERM PAVEMENT MARKING REMOVAL | SQ FT | 68.0 | 68 |
| 70300210 | TEMPORARY PAVEMENT MARKING - LETTERS & SYMBOLS | SQ FT | 47.0 | 47 |
| 70300230 | TEMPORARY PAVEMENT MARKING - LINE 5" | FOOT | 5735.0 | 5735 |
| 70300240 | TEMPORARY PAVEMENT MARKING - LINE 6" | FOOT | 227.0 | 227 |
| 70300250 | TEMPORARY PAVEMENT MARKING - LINE 8" | FOOT | 514.0 | 514 |
| 70300260 | TEMPORARY PAVEMENT MARKING - LINE 12" | FOOT | 461.0 | 461 |
| 70300280 | TEMPORARY PAVEMENT MARKING - LINE 24" | FOOT | 125.0 | 125 |
| * 78009000 | MODIFIED URETHANE PAVEMENT MARKING - LETTERS & SYMBOLS | SQ FT | 47.0 | 47 |
| * 78009005 | MODIFIED URETHANE PAVEMENT MARKING - LINE 5" | FOOT | 5735.0 | 5735 |
| * 78009006 | MODIFIED URETHANE PAVEMENT MARKING - LINE 6" | FOOT | 227.0 | 227 |
| * 78009008 | MODIFIED URETHANE PAVEMENT MARKING - LINE 8" | FOOT | 514.0 | 514 |
| * 78009012 | MODIFIED URETHANE PAVEMENT MARKING - LINE 12" | FOOT | 461.0 | 461 |
| * 78009024 | MODIFIED URETHANE PAVEMENT MARKING - LINE 24" | FOOT | 125.0 | 125 |
| * 78100100 | RAISED REFLECTIVE PAVEMENT MARKER | EACH | 60.0 | 60 |
| 78300200 | RAISED REFLECTIVE PAVEMENT MARKER REMOVAL | EACH | 60.0 | 60 |

* SPECIALTY ITEM

REV. - MS

| | | | |
|---|---------------------------------|------------|-----------|
| FILE NAME = S:\CONTRMAINT_CAD\72M15 - Cass Mill and | USER NAME = SHARPTD | DESIGNED - | REVISED - |
| Default | F:\11\PLANS\72M15-sht-3-500.dgn | DRAWN - | REVISED - |
| | PLOT SCALE = 100.0000' / 1in. | CHECKED - | REVISED - |
| | PLOT DATE = 5/27/2020 | DATE - | REVISED - |

STATE OF ILLINOIS
DEPARTMENT OF TRANSPORTATION

SUMMARY OF QUANTITIES

SCALE: SHEET OF SHEETS STA. TO STA.

| F.A.P. RTE. | SECTION | COUNTY | TOTAL SHEETS | SHEET NO. |
|--------------------|---------------------------|--------|---------------------------|-----------|
| 614 | (145RS-4,5RS-5,146RS-5)PP | CASS | 8 | 3 |
| CONTRACT NO. 72M15 | | | ILLINOIS FED. AID PROJECT | |

| LOCATION | ROUTE | STATION | TO | STATION | SIDE | COLOR | TYPE | MODIFIED URETHANE PAVEMENT MARKING - LETTERS AND SYMBOLS | MODIFIED URETHANE PAVEMENT MARKING - LINE 5" (FEET) | MODIFIED URETHANE PAVEMENT MARKING - LINE 6" (FEET) | MODIFIED URETHANE PAVEMENT MARKING - LINE 8" (FEET) | MODIFIED URETHANE PAVEMENT MARKING - LINE 12" (FEET) | MODIFIED URETHANE PAVEMENT MARKING - LINE 24" (FEET) |
|----------------------------------|--------|----------|----|----------|---------|--------|-----------------|--|---|---|---|--|--|
| #1 MORGAN-CASS CO LINE | IL 78 | 295+25.0 | TO | 298+20.0 | RT | YELLOW | NO PASS | | 295.0 | | | | |
| #1 MORGAN-CASS CO LINE | IL 78 | 295+25.0 | TO | 298+20.0 | LT | YELLOW | SKIP DASH | | 295.0 | | | | |
| #1 MORGAN-CASS CO LINE | IL 78 | 295+25.0 | TO | 298+20.0 | LT & RT | WHITE | EDGE (X2) | | 590.0 | | | | |
| #2 IL 125/78 JUNCTION | IL 125 | 443+90.0 | TO | 446+17.6 | LT & RT | YELLOW | NO PASS (X2) | | 455.2 | | | | |
| #2 IL 125/78 JUNCTION | IL 125 | 444+02.9 | TO | 445+15.5 | RT | WHITE | EDGE | | 112.6 | | | | |
| #2 IL 125/78 JUNCTION | IL 125 | 446+17.6 | TO | 447+68.1 | LT & RT | YELLOW | NO PASS (X2) | | 301.0 | | | | |
| #2 IL 125/78 JUNCTION | IL 125 | 448+78.5 | TO | 455+26.0 | LT & RT | YELLOW | NO PASS (X2) | | 1295.0 | | | | |
| #2 IL 125/78 JUNCTION | IL 125 | 450+32.7 | TO | 455+26.0 | RT | WHITE | EDGE | | 493.3 | | | | |
| #2 IL 125/78 JUNCTION | IL 125 | 450+42.3 | TO | 455+26.0 | LT | WHITE | EDGE | | 483.7 | | | | |
| #2 IL 125/78 JUNCTION | IL 78 | 365+00.0 | TO | 368+15.8 | LT & RT | YELLOW | NO PASS (X2) | | 631.6 | | | | |
| #2 IL 125/78 JUNCTION | IL 78 | 364+70.0 | TO | 365+71.2 | LT & RT | WHITE | EDGE (X2) | | 202.4 | | | | |
| #2 IL 125/78 JUNCTION | IL 78 | 0+25.0 | TO | 3+15.0 | LT & RT | YELLOW | NO PASS (X2) | | 580.0 | | | | |
| #2 IL 125/78 JUNCTION | IL 125 | 444+03.3 | TO | 445+68.2 | RT | WHITE | SKIP DASH | | | 41.3 | | | |
| #2 IL 125/78 JUNCTION | IL 125 | 445+68.2 | TO | 446+17.6 | RT | WHITE | SOLID TURN | | | 49.4 | | | |
| #2 IL 125/78 JUNCTION | IL 125 | 446+17.6 | TO | 447+53.5 | RT | WHITE | SOLID TURN | | | 135.9 | | | |
| #2 IL 125/78 JUNCTION | IL 125 | 447+53.1 | TO | 448+03.0 | LT | WHITE | ISLAND STRIPING | | | | 139.3 | | |
| #2 IL 125/78 JUNCTION | IL 125 | 447+53.1 | TO | 445+15.5 | RT | WHITE | ISLAND STRIPING | | | | 121.5 | | |
| #2 IL 125/78 JUNCTION | IL 125 | 448+42.1 | TO | 448+84.3 | LT | WHITE | ISLAND STRIPING | | | | 109.2 | | |
| #2 IL 125/78 JUNCTION | IL 125 | 448+44.4 | TO | 448+96.1 | RT | WHITE | ISLAND STRIPING | | | | 143.6 | | |
| #2 IL 125/78 JUNCTION | IL 125 | 447+53.1 | TO | 448+03.0 | LT | WHITE | DIAGONALS | | | | | 65.1 | |
| #2 IL 125/78 JUNCTION | IL 125 | 447+53.1 | TO | 448+03.1 | RT | WHITE | DIAGONALS | | | | | 47.4 | |
| #2 IL 125/78 JUNCTION | IL 125 | 448+42.1 | TO | 448+84.3 | LT | WHITE | DIAGONALS | | | | | 45.3 | |
| #2 IL 125/78 JUNCTION | IL 125 | 448+40.0 | TO | 448+96.1 | RT | WHITE | DIAGONALS | | | | | 62.5 | |
| #2 IL 125/78 JUNCTION | IL 78 | 365+90.5 | TO | 368+01.3 | LT & RT | YELLOW | DIAGONALS | | | | | 122.1 | |
| #2 IL 125/78 JUNCTION | IL 78 | 0+44.6 | TO | 2+60.4 | LT & RT | YELLOW | DIAGONALS | | | | | 118.3 | |
| #2 IL 125/78 JUNCTION | IL 125 | 447+58.3 | TO | 447+68.1 | LT | WHITE | STOP BAR | | | | | | 18.0 |
| #2 IL 125/78 JUNCTION | IL 125 | 447+68.1 | TO | 447+68.1 | RT | WHITE | STOP BAR | | | | | | 12.0 |
| #2 IL 125/78 JUNCTION | IL 125 | 447+84.1 | TO | 447+97.4 | RT | WHITE | STOP BAR | | | | | | 18.0 |
| #2 IL 125/78 JUNCTION | IL 125 | 448+47.7 | TO | 448+62.5 | LT | WHITE | STOP BAR | | | | | | 18.0 |
| #2 IL 125/78 JUNCTION | IL 125 | 448+79.2 | TO | 448+88.6 | RT | WHITE | STOP BAR | | | | | | 18.0 |
| #2 IL 125/78 JUNCTION | IL 125 | 448+80.5 | TO | 448+80.5 | LT | WHITE | STOP BAR | | | | | | 12.0 |
| #2 IL 125/78 JUNCTION | IL 78 | 0+25.0 | TO | 0+25.0 | LT | WHITE | STOP BAR | | | | | | 14.6 |
| #2 IL 125/78 JUNCTION | IL 78 | 368+13.7 | TO | 368+13.7 | RT | WHITE | STOP BAR | | | | | | 14.0 |
| #2 IL 125 E TO IL 78 S TURN LANE | | | | | | WHITE | TURN ARROW | 46.8 | | | | | |
| JOB TOTALS = | | | | | | | | 47 | 5735 | 227 | 514 | 461 | 125 |

| LOCATION NO. | ROUTE | STA. | TO | STA. | LENGTH | WIDTH | AREA | 40600290 BITUMINOUS MATERIALS (TACK COAT) | | 44000155 HMA SURFACE REMOVAL (1 1/2") | 40604060 HMA SURFACE COURSE MIX "D" N50 | | |
|-----------------------|--------|------------------------------|----|-----------|--------|-------|-------|---|---------------|---------------------------------------|---|--------------|--------|
| | | | | | | | | RATE | POUND | (SQ YD) | DEPTH | RATE | TON |
| | | | | | | | | (SQ FT) | POUND/SQ FT | (SQ YD) | INCH | TON/SQ YD*IN | |
| #1 MORGAN CO LINE | IL 78 | 295+25 | TO | 298+20 | 295 | 24 | 7080 | 0.05 | 354 | 786.67 | 1.5 | 0.056 | 66.08 |
| #2 IL 78/125 JUNCTION | IL 78 | 365+00.00 | TO | 368+78.59 | 378.59 | VAR. | 73345 | 0.05 | 3667.25 | 8150.00 | 1.5 | 0.056 | 684.60 |
| | | ST. EQ. 36875.59bk+0+00.00ah | | 3+08.92 | 308.92 | | | | | | | | |
| | IL 125 | 443+90.00 | | 455+26.00 | 1136 | | | | | | | | |
| TOTAL | | | | | | | | 4021.3 | 8936.7 | | | 750.7 | |



LOCATION 1 BEGINS
STA. 295+25
IL 78

LOCATION 1 ENDS
STA. 298+20
IL 78

| | | | |
|---|-------------------------------------|------------------|-----------------|
| FILE NAME = | USER NAME = SHARPTD | DESIGNED - _____ | REVISED - _____ |
| S:\CONTRMAINT_CAD\72M15 - Cass Mill and | F:\11\PLANS\72M15-sht-5-6-plans.dgn | DRAWN - _____ | REVISED - _____ |
| Default | PLOT SCALE = 40.0000' / in. | CHECKED - _____ | REVISED - _____ |
| | PLOT DATE = 5/27/2020 | DATE - _____ | REVISED - _____ |

**STATE OF ILLINOIS
DEPARTMENT OF TRANSPORTATION**

LOCATION MAP

SCALE: _____ SHEET ____ OF ____ SHEETS STA. _____ TO STA. _____

| F.A.P. RTE. | SECTION | COUNTY | TOTAL SHEETS | SHEET NO. |
|---------------------------|---------------------------|--------|--------------------|-----------|
| 614 | (145RS-4,5RS-5,14GRS-5)PP | CASS | 8 | 5 |
| ILLINOIS FED. AID PROJECT | | | CONTRACT NO. 72M15 | |



LOCATION 2 BEGINS
STA. 365+00
ROUTE: IL 78

LOCATION 2 ENDS
STA. 455+26
ROUTE: IL 125

LOCATION 2 BEGINS
STA. 443+90
ROUTE: IL 125

LOCATION 2 ENDS
STA. 3+08.92
ROUTE: IL 78

STA. EQ. 368+78.59bk
=0+00.00ah

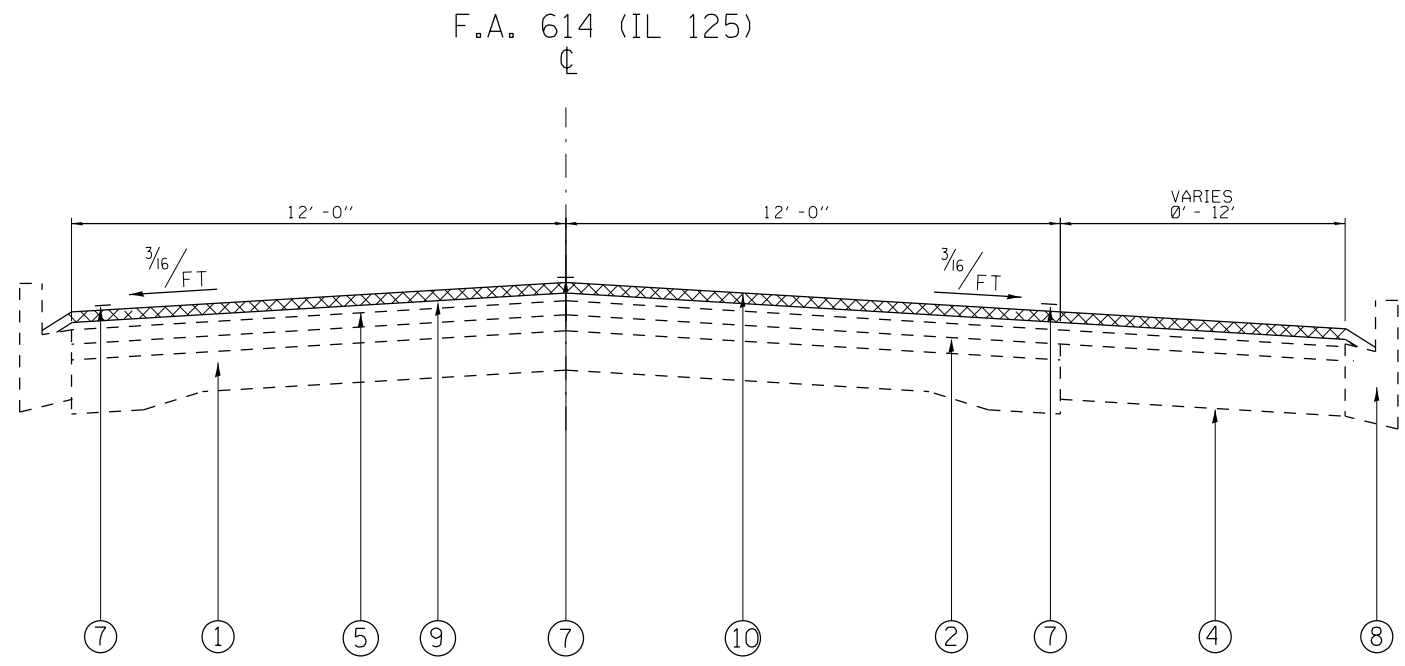
| | | | |
|---|-------------------------------------|------------------|-----------------|
| FILE NAME = S:\CONTRMAINT_CAD\72M15 - Cass Mill and | USER NAME = SHARPTD | DESIGNED - _____ | REVISED - _____ |
| | F:\11\PLANS\72M15-sht-5-6-plans.dgn | DRAWN - _____ | REVISED - _____ |
| Default | PLOT SCALE = 40.0000' / in. | CHECKED - _____ | REVISED - _____ |
| | PLOT DATE = 5/27/2020 | DATE - _____ | REVISED - _____ |

**STATE OF ILLINOIS
DEPARTMENT OF TRANSPORTATION**

LOCATION MAP

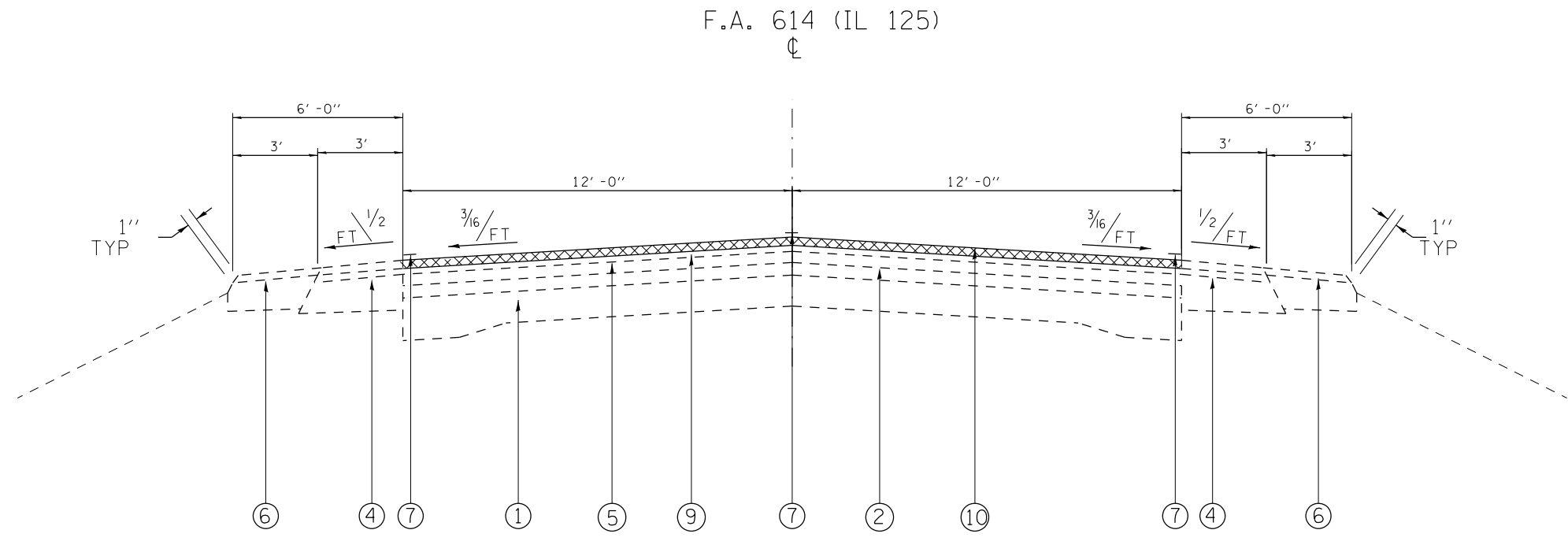
SCALE: _____ SHEET _____ OF _____ SHEETS STA. _____ TO STA. _____

| F.A.P. RTE. | SECTION | COUNTY | TOTAL SHEETS | SHEET NO. |
|--------------------|---------------------------|--------|---------------------------|-----------|
| 614 | (145RS-4,5RS-5,14GRS-5)PP | CASS | 8 | 6 |
| CONTRACT NO. 72M15 | | | ILLINOIS FED. AID PROJECT | |



STA. 443+90 TO STA. 447+61

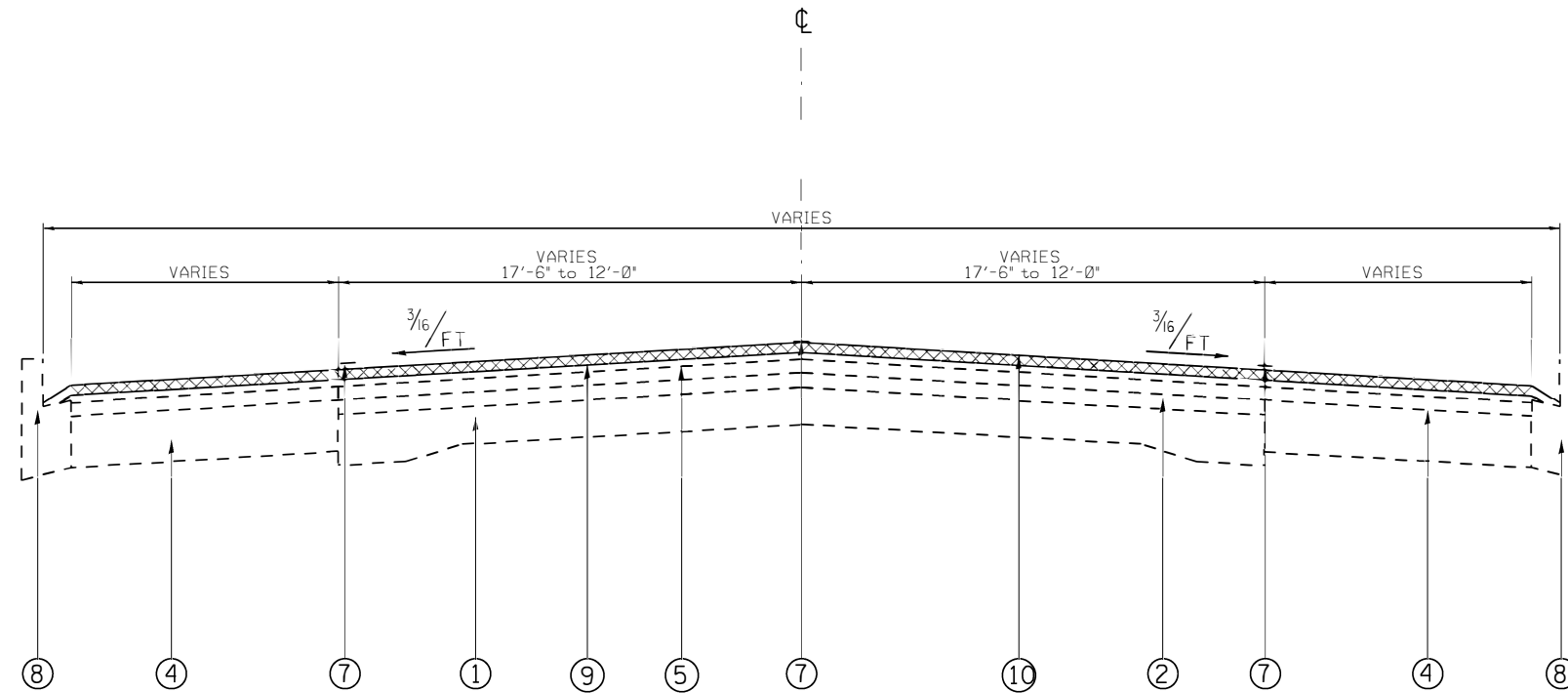
- LEGEND
- ① EXIST. PCC PAVEMENT (9 in- 6 in - 9 in)
 - ② EXIST. BITUMINOUS CONCRETE SURFACE
 - ③ EXIST. PORTLAND CEMENT CONCRETE WIDENING
 - ④ EXIST. BITUMINOUS SHOULDER
 - ⑤ EXIST. BITUMINOUS CONCRETE SURFACE OVERLAY
 - ⑥ EXIST. AGGREGATE SHOULDER
 - ⑦ EXIST. PAVEMENT MARKING - LINE 5 in
 - ⑧ EXIST. CONCRETE CURB & GUTTER
 - ⑨ PROP. HMA SURFACE REMOVAL 1 1/2"
 - ⑩ PROP. HMA SURFACE 1 1/2"



448+05.07 TO 455+26

| | | | | | | | | | | | | |
|---|---------------------------------------|------------|-----------|---|---|--|--|--------------------|---------------------------|--------|--------------|-----------|
| FILE NAME = | USER NAME = SHARPTD | DESIGNED - | REVISED - | STATE OF ILLINOIS DEPARTMENT OF TRANSPORTATION | TYPICAL SECTIONS | | | F.A.P. RTE. | SECTION | COUNTY | TOTAL SHEETS | SHEET NO. |
| S:\CONTRMAINT_CAD\72M15 - Cass Mill and | F:\11\PLANS\72M15-sht-7-8-typical.dgn | DRAWN - | REVISED - | | | | | 614 | (145RS-4,5RS-5,146RS-5)PP | CASS | 8 | 7 |
| Default | PLOT SCALE = 100.0000' / in. | CHECKED - | REVISED - | | SCALE: SHEET OF SHEETS STA. TO STA. | | | CONTRACT NO. 72M15 | | | | |
| | PLOT DATE = 5/27/2020 | DATE - | REVISED - | | ILLINOIS FED. AID PROJECT | | | | | | | |

F.A. 614 (IL 78)

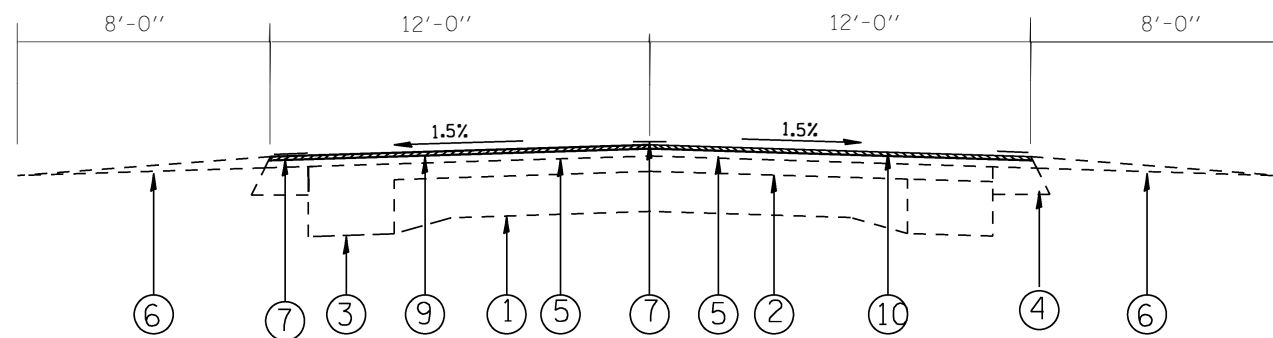


STA. 365+00 TO STA. 368+78.59
 STA. EQ. 368+78.59bk=0+00.00ah
 STA, 0+00.00 TO 3+08.92

LEGEND

- ① EXIST. PCC PAVEMENT (9 in- 6 in - 9 in)
- ② EXIST. BITUMINOUS CONCRETE SURFACE
- ③ EXIST. PORTLAND CEMENT CONCRETE WIDENING
- ④ EXIST. BITUMINOUS SHOULDER
- ⑤ EXIST. BITUMINOUS CONCRETE SURFACE OVERLAY
- ⑥ EXIST. AGGREGATE SHOULDER
- ⑦ EXIST. PAVEMENT MARKING - LINE 5 in
- ⑧ EXIST. CONCRETE CURB & GUTTER
- ⑨ PROP. HMA SURFACE REMOVAL 1 1/2"
- ⑩ PROP. HMA SURFACE 1 1/2"

F.A. 614 (IL 78)



STA. 295+25 TO STA. 298+20

REV. - MS

| | | | |
|---|------------------------------------|------------|-----------|
| FILE NAME = | USER NAME = SHARPTD | DESIGNED - | REVISED - |
| S:\CONTRMAINT_CAD\72M15 - Cass Mill and | F:\PLANS\72M15-sht-7-8-typical.dgn | DRAWN - | REVISED - |
| Default | PLOT SCALE = 100.0000' / in. | CHECKED - | REVISED - |
| | PLOT DATE = 5/27/2020 | DATE - | REVISED - |

STATE OF ILLINOIS
 DEPARTMENT OF TRANSPORTATION

TYPICAL SECTIONS

SCALE: SHEET OF SHEETS STA. TO STA.

| F.A.P. RTE. | SECTION | COUNTY | TOTAL SHEETS | SHEET NO. |
|--------------------|---------------------------|--------|---------------------------|-----------|
| 614 | (145RS-4,5RS-5,146RS-5)PP | CASS | 8 | 8 |
| CONTRACT NO. 72M15 | | | ILLINOIS FED. AID PROJECT | |