

STATE OF ILLINOIS
DEPARTMENT OF TRANSPORTATION

F.A.P. RTE.	SECTION	COUNTY	TOTAL SHEETS	SHEET NO.
310	42-2DM-1	JERSEY	10	1
		ILLINOIS	CONTRACT NO. 76N53	

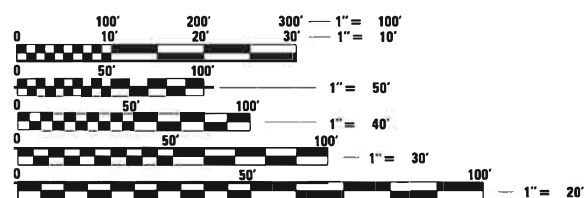
FOR INDEX OF SHEETS, SEE SHEET NO. 2

PROPOSED
HIGHWAY PLANS

FAP ROUTE 310 (US 67)
SECTION 42-2DM-1
DEMOLITION
JERSEY COUNTY

C-98-102-20

D-98-086-20

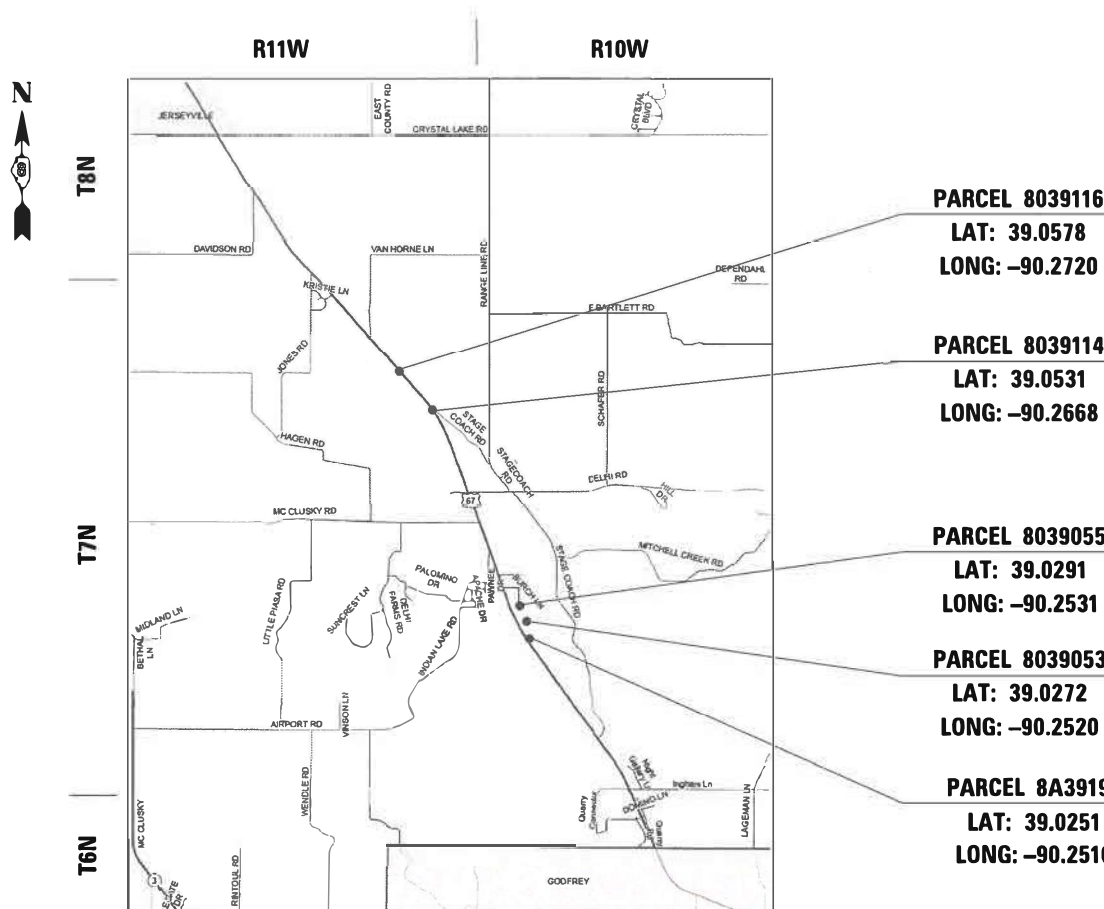


FULL SIZE PLANS HAVE BEEN PREPARED USING STANDARD ENGINEERING SCALES. REDUCED SIZED PLANS WILL NOT CONFORM TO STANDARD SCALES. IN MAKING MEASUREMENTS ON REDUCED PLANS, THE ABOVE SCALES MAY BE USED.

J.U.L.I.E.
JOINT UTILITY LOCATION INFORMATION FOR EXCAVATORS
1-800-892-0123
OR 811

PROJECT ENGINEER: HERVE GELIN (618) 346-3179
PROJECT MANAGER: BILLIE OWEN (618) 346-3209

CONTRACT NO. 76N53



STATE OF ILLINOIS
DEPARTMENT OF TRANSPORTATION

SUBMITTED April 30 2020
Kath Roberts
REGIONAL ENGINEER

June 26, 2020
Joe A. Elk
ENGINEER OF DESIGN AND ENVIRONMENT

June 26, 2020
James J. Gu
DIRECTOR OF HIGHWAYS PROJECT IMPLEMENTATION 13

PRINTED BY THE AUTHORITY
OF THE STATE OF ILLINOIS

INDEX OF SHEETS

- 1 COVER SHEET
- 2 INDEX OF SHEETS, HIGHWAY STANDARDS, GENERAL NOTES AND COMMITMENTS
- 3-4 SUMMARY OF QUANTITIES
- 5 LOCATION MAP AND BUILDING REMOVAL KEY
- 6-10 PARCEL DETAILS

HIGHWAY STANDARDS

- 280001-07
- 701001-02
- 701006-05
- 701901-08

GENERAL NOTES

- 1 THE FOLLOWING UTILITIES ARE KNOWN TO HAVE FACILITIES WITHIN THE PROJECT AREA ARE AS FOLLOWS:
 * MEMBER OF J.U.L.I.E.

 * EVERSTREAM GLC HOLDING COMPANY LLC
 * FRONTIER COMMUNICATIONS
 * JERSEY COUNTY RURAL WATER COMPANY
 * M.J.M. ELECTRICAL COOPERATIVE, INC.
- 2 A QUANTITY FOR TWO APPLICATIONS OF MULCH, METHOD 2 HAS BEEN INCLUDED IN THIS CONTRACT. ONE APPLICATION OF MULCH IS TO BE PLACED OVER THE TEMPORARY SEEDING. THE SECOND APPLICATION WILL BE USED AFTER THE FINAL SEEDING OPERATIONS ARE COMPLETE.
- 3 THERE IS NO TREE REMOVAL WITH THIS CONTRACT.

COMMITMENTS

NONE

MODEL: Default
 FILE: \\nls1c-pix\plannerroom\data\illinois.gov\PWIDOT\Documents\IDOT_Offices\IDOT\DOT_76N53\CADDData\CAD\sheet\0776N53-shc-gemnote.dgn

USER NAME = challandeske	DESIGNED -	REVISED -
	DRAWN -	REVISED -
PLOT SCALE = 100,0000 ' / in.	CHECKED -	REVISED -
PLOT DATE = 5/11/2020	DATE -	REVISED -

STATE OF ILLINOIS
DEPARTMENT OF TRANSPORTATION

INDEX OF SHEETS, HIGHWAY STANDARDS
GENERAL NOTES AND COMMITMENTS

SCALE: SHEET OF SHEETS STA. TO STA.

F.A.P. RTE.	SECTION	COUNTY	TOTAL SHEETS	SHEET NO.
310	42-2DM-1	JERSEY	10	2
CONTRACT NO. 76N53				
			ILLINOIS	FED. AID PROJECT

CODE NO.	ITEM	UNIT	TOTAL QUANTITY	CONSTR. CODE
				100% STATE ROADWAY 0044 RURAL
25000110	SEEDING, CLASS 1A	ACRE	0.75	0.75
25000400	NITROGEN FERTILIZER NUTRIENT	POUND	67.5	67.5
25000500	PHOSPHORUS FERTILIZER NUTRIENT	POUND	67.5	67.5
25000600	POTASSIUM FERTILIZER NUTRIENT	POUND	67.5	67.5
25000700	AGRICULTURAL GROUND LIMESTONE	TON	1.5	1.5
25100115	MULCH, METHOD 2	ACRE	1.5	1.5
28000250	TEMPORARY EROSION CONTROL SEEDING	POUND	75	75
28000400	PERIMETER EROSION BARRIER	FOOT	1000	1000
67100100	MOBILIZATION	L SUM	1	1
67201000	SEALING ABANDONED WATER WELLS	EACH	4	4
Z0007601	BUILDING REMOVAL NO. 1	L SUM	1	1
Z0007602	BUILDING REMOVAL NO. 2	L SUM	1	1
Z0007603	BUILDING REMOVAL NO. 3	L SUM	1	1
Z0007604	BUILDING REMOVAL NO. 4	L SUM	1	1

MODEL: Default
 FILE: \\nrcs-pix\pub\harcourt\illinois.gov\PWIDOT\Documents\DOT_Offices\Dir\ctc @projects\076N53\CADD\DATA\CAD\hrcs\076N53-sh-500.dgn

USER NAME = challandeske	DESIGNED -	REVISED -
	DRAWN -	REVISED -
PLOT SCALE = 100,0000 ' / in.	CHECKED -	REVISED -
PLOT DATE = 5/11/2020	DATE -	REVISED -

**STATE OF ILLINOIS
DEPARTMENT OF TRANSPORTATION**

SUMMARY OF QUANTITIES

SCALE: SHEET OF SHEETS STA. TO STA.

F.A.P. RTE.	SECTION	COUNTY	TOTAL SHEETS	SHEET NO.
310	42-2DM-1	JERSEY	10	3
CONTRACT NO. 76N53			ILLINOIS FED. AID PROJECT	

CODE NO.	ITEM	UNIT	TOTAL QUANTITY	CONSTR. CODE
				100% STATE ROADWAY 0044 RURAL
Z0007605	BUILDING REMOVAL NO. 5	L SUM	1	1
Z0007606	BUILDING REMOVAL NO. 6	L SUM	1	1
Z0007607	BUILDING REMOVAL NO. 7	L SUM	1	1
Z0015500	DEBRIS REMOVAL	L SUM	1	1
Z0023800	FILLING EXISTING SEPTIC TANK	EACH	2	2
Z0048665	RAILROAD PROTECTIVE LIABILITY INSURANCE	L SUM	1	1
* Z0049901	REMOVAL AND DISPOSAL OF NON-FRIABLE ASBESTOS, BUILDING NO. 1	L SUM	1	1
* Z0049906	REMOVAL AND DISPOSAL OF NON-FRIABLE ASBESTOS, BUILDING NO. 6	L SUM	1	1

* SPECIALTY ITEM

MODEL: Default
 FILE: \\nrcs-pk101\harcourt\m.d\illinois.gov\PROJECTS\DOT\Documents\DOT_Offices\District 8\Projects\076N53\CADD\DATA\CAD\Sheet\076N53-sh-500.dgn

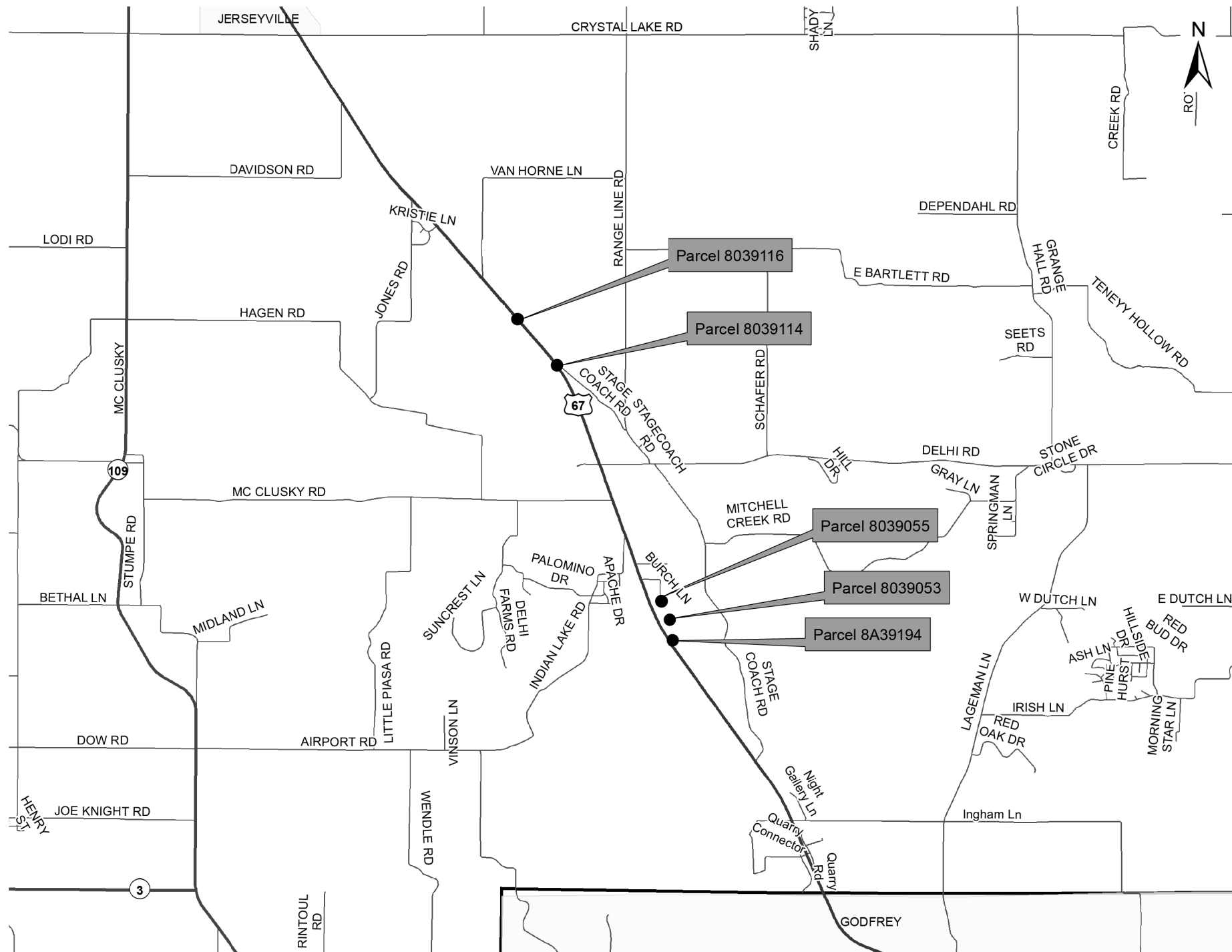
USER NAME = challeske	DESIGNED -	REVISED -
PLOT SCALE = 100.0000' / in.	DRAWN -	REVISED -
PLOT DATE = 5/11/2020	CHECKED -	REVISED -
	DATE -	REVISED -

**STATE OF ILLINOIS
DEPARTMENT OF TRANSPORTATION**

SUMMARY OF QUANTITIES

SCALE: SHEET OF SHEETS STA. TO STA.

F.A.P. RTE.	SECTION	COUNTY	TOTAL SHEETS	SHEET NO.
310	42-2DM-1	JERSEY	10	4
			CONTRACT NO. 76N53	
		ILLINOIS FED. AID PROJECT		



BUILDING NUMBER	PARCEL NUMBER	DESCRIPTION
1	8039055	1254 SQ FT ONE STORY HOUSE ON CRAWL SPACE
2	8039055	1703 SQ FT GARAGE ON CONCRETE SLAB
3	8039114	2450 SQ FT POLE BARN
4	8039114	325 SQ FT SHED
5	8039114	135 SQ FT CONCRETE SLAB
6	8039116	1482 SQ FT ONE AND A HALF STORY HOUSE ON BASEMENT
7	8039116	840 SQ FT SHED

MODEL: Default
 FILE: \\nashville.pw.gov\pww\DOT\Documents\DOT_Offices\JL\dtct_8\Projects\0776\8A39194\CADD\DATA\CAD\kcrs\0776\8A39194-shc-gen-note.dgn

USER NAME = challeske	DESIGNED -	REVISED -
	DRAWN -	REVISED -
PLOT SCALE = 100,0000' / in.	CHECKED -	REVISED -
PLOT DATE = 5/11/2020	DATE -	REVISED -

STATE OF ILLINOIS
DEPARTMENT OF TRANSPORTATION

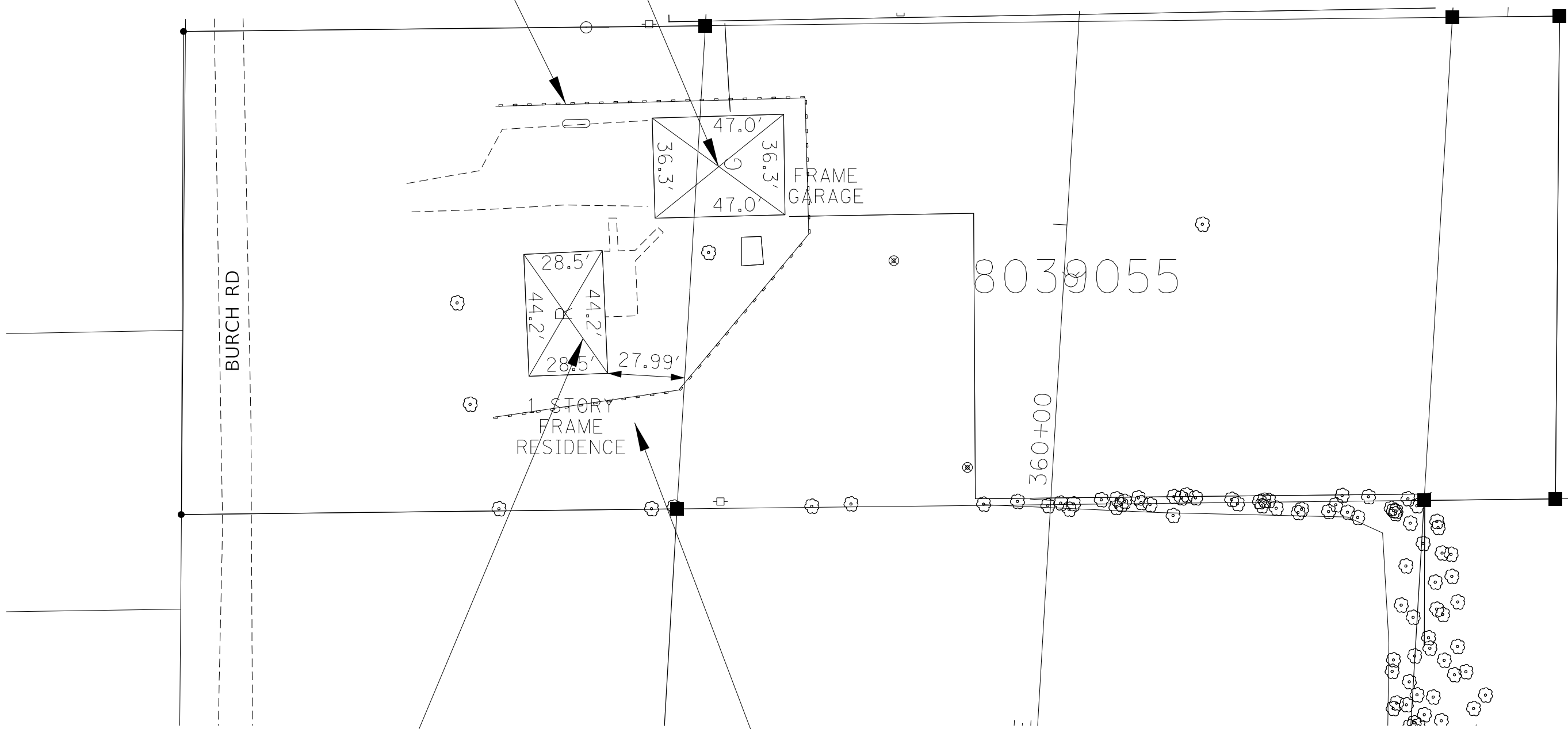
LOCATION MAP AND
BUILDING REMOVAL KEY

SCALE: SHEET OF SHEETS STA. TO STA.

F.A.P. RTE.	SECTION	COUNTY	TOTAL SHEETS	SHEET NO.
310	42-2DM-1	JERSEY	10	5
CONTRACT NO. 76N53				
ILLINOIS FED. AID PROJECT				



BUILDING REMOVAL NO. 2
PERIMETER EROSION BARRIER - 300'



BUILDING REMOVAL NO. 1 **FILL EXISTING SEPTIC TANK - 1 EACH**

MODEL: Default
 FILE: Model1.dwg
 PROJECT: I:\Projects\DOT\Documents\DOT_Offices\District 8\Projects\DOT\8039055\8039055.dwg

USER NAME = challandeske	DESIGNED -	REVISED -
	DRAWN -	REVISED -
PLOT SCALE = 40,0000 ' / in.	CHECKED -	REVISED -
PLOT DATE = 5/11/2020	DATE -	REVISED -

**STATE OF ILLINOIS
 DEPARTMENT OF TRANSPORTATION**

DEMOLITION PARCEL 8039055

SCALE: SHEET OF SHEETS STA. TO STA.

F.A.P. RTE.	SECTION	COUNTY	TOTAL SHEETS	SHEET NO.
310	42-2DM-1	JERSEY	10	6
CONTRACT NO. 76N53				
ILLINOIS FED. AID PROJECT				



BUILDING REMOVAL NO. 3

BUILDING REMOVAL NO. 4

BUILDING REMOVAL NO. 5

**SEALING ABANDONED
WATER WELL - 1 EACH**

PERIMETER EROSION BARRIER - 250'

8039114

WOODEN
BARN

WOODEN
STORAGE
SHED

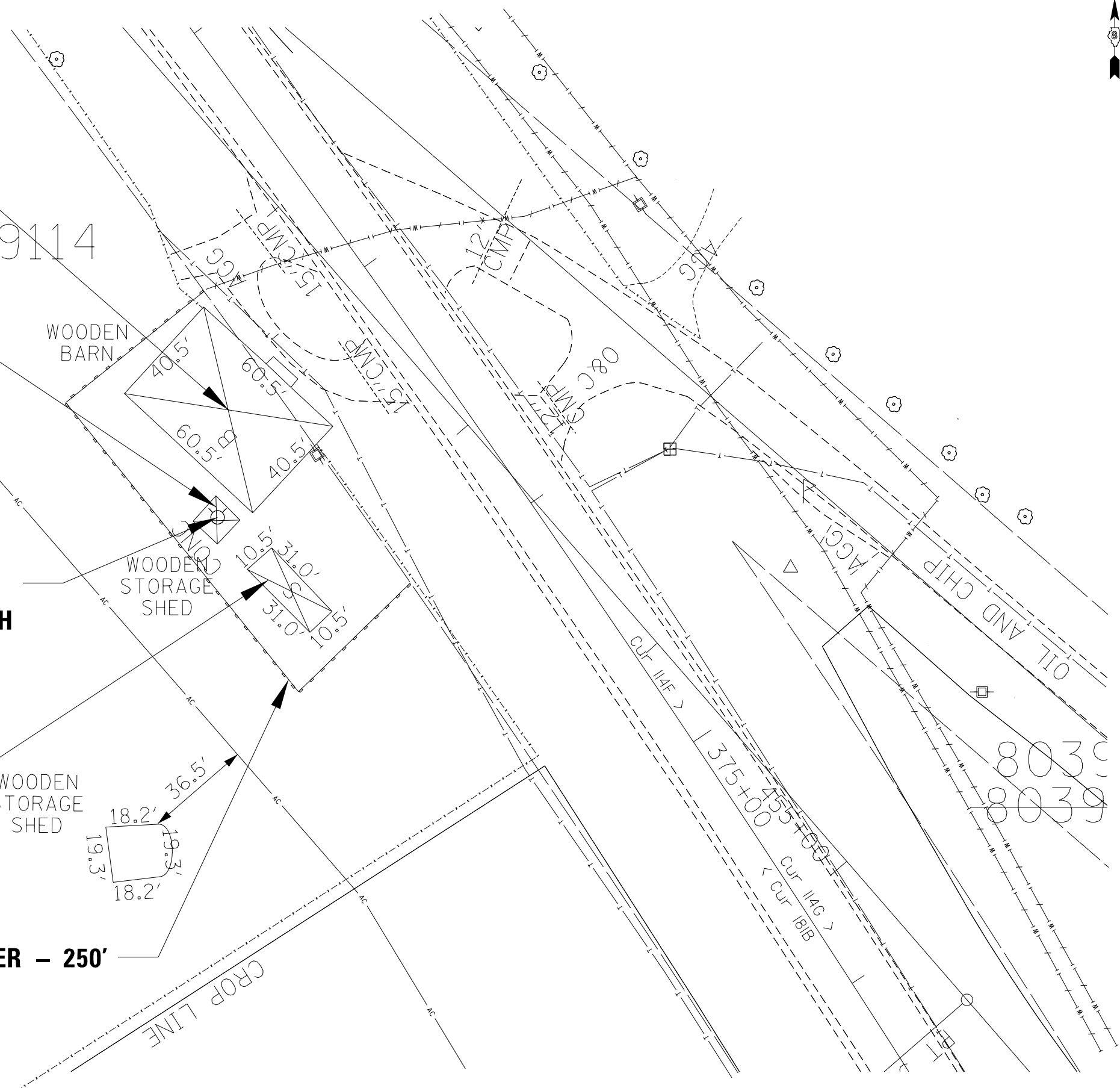
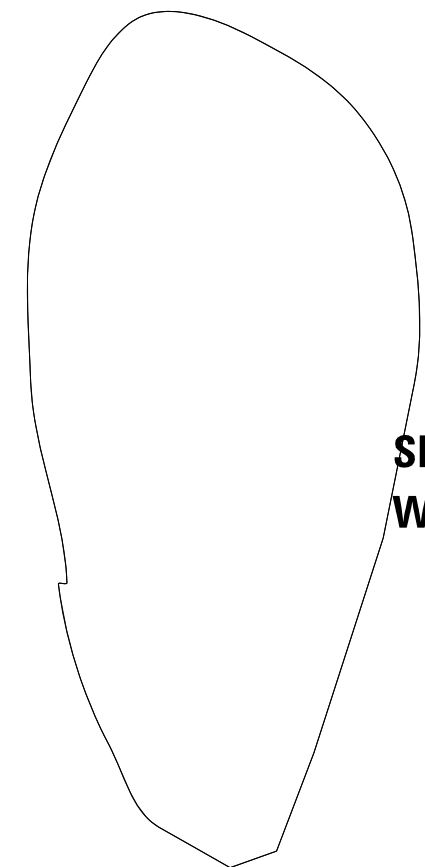
WOODEN
STORAGE
SHED

CROP LINE

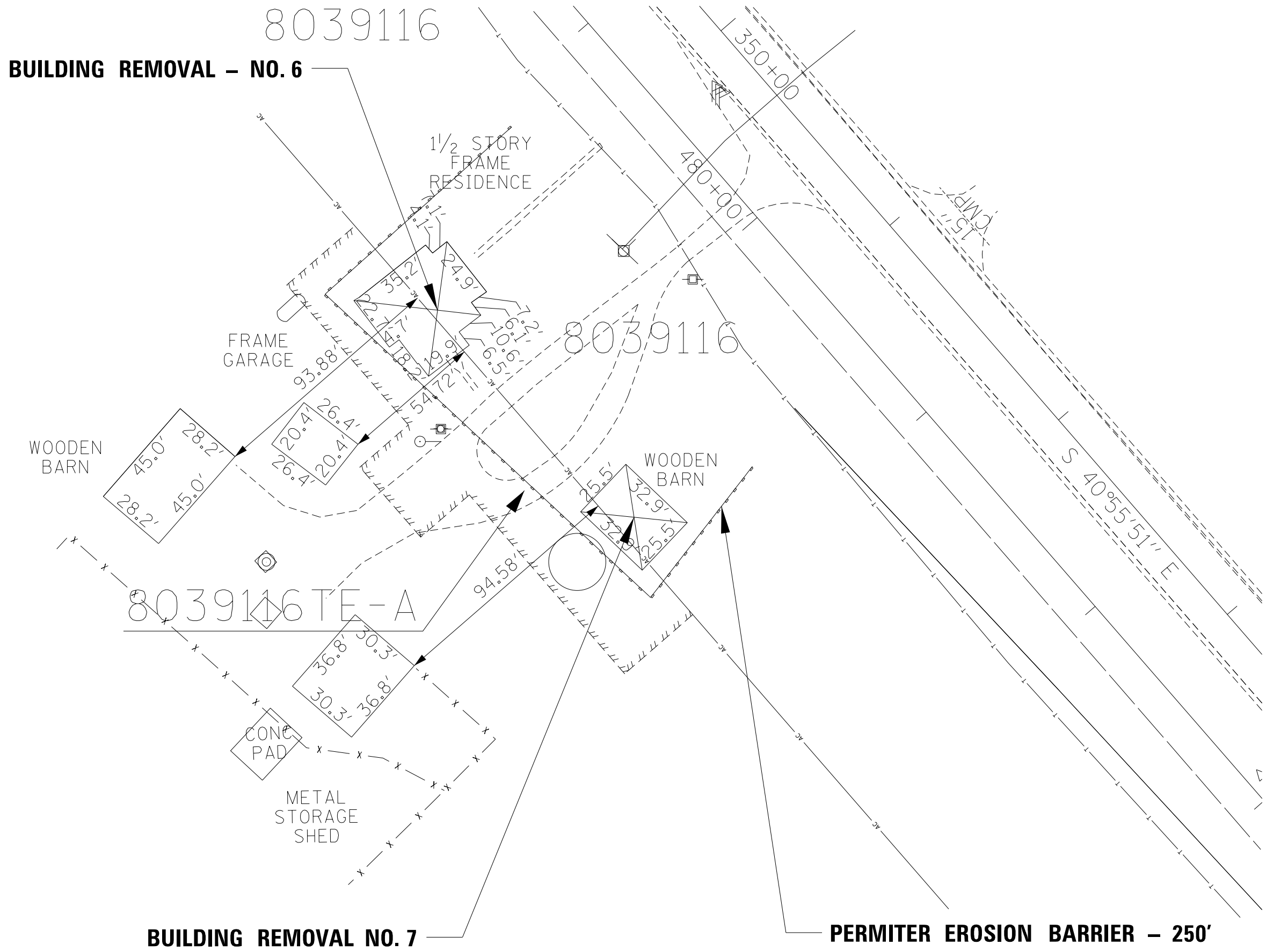
DEMOLITION PARCEL 8039114

STATE OF ILLINOIS
DEPARTMENT OF TRANSPORTATION

F.A.P. RTE.	SECTION	COUNTY	TOTAL SHEETS	SHEET NO.
310	42-2DM-1	JERSEY	10	7
CONTRACT NO. 76N53				
ILLINOIS FED. AID PROJECT				



MODEL: Default
 FILE: \\nrc\p\uplanroom\data\illinois.gov\PIWDOT\Documents\DOT_Offices\District 8\Projects\076N53\CADD\data\CAD\pieces\076N53-shc-plan.dgn



BUILDING REMOVAL - NO. 6

8039116 TE-A

BUILDING REMOVAL NO. 7

PERMETER EROSION BARRIER - 250'

MODEL: Default
 FILE: \\nrc\c:\p\p\planroom\dat\illinois\gov\p\w\dot\Documents\DOT_Offices\Illin\ct\p\Projects\0776N53\CADD\ata\CAD\pieces\0776N53-shc-plan.dgn

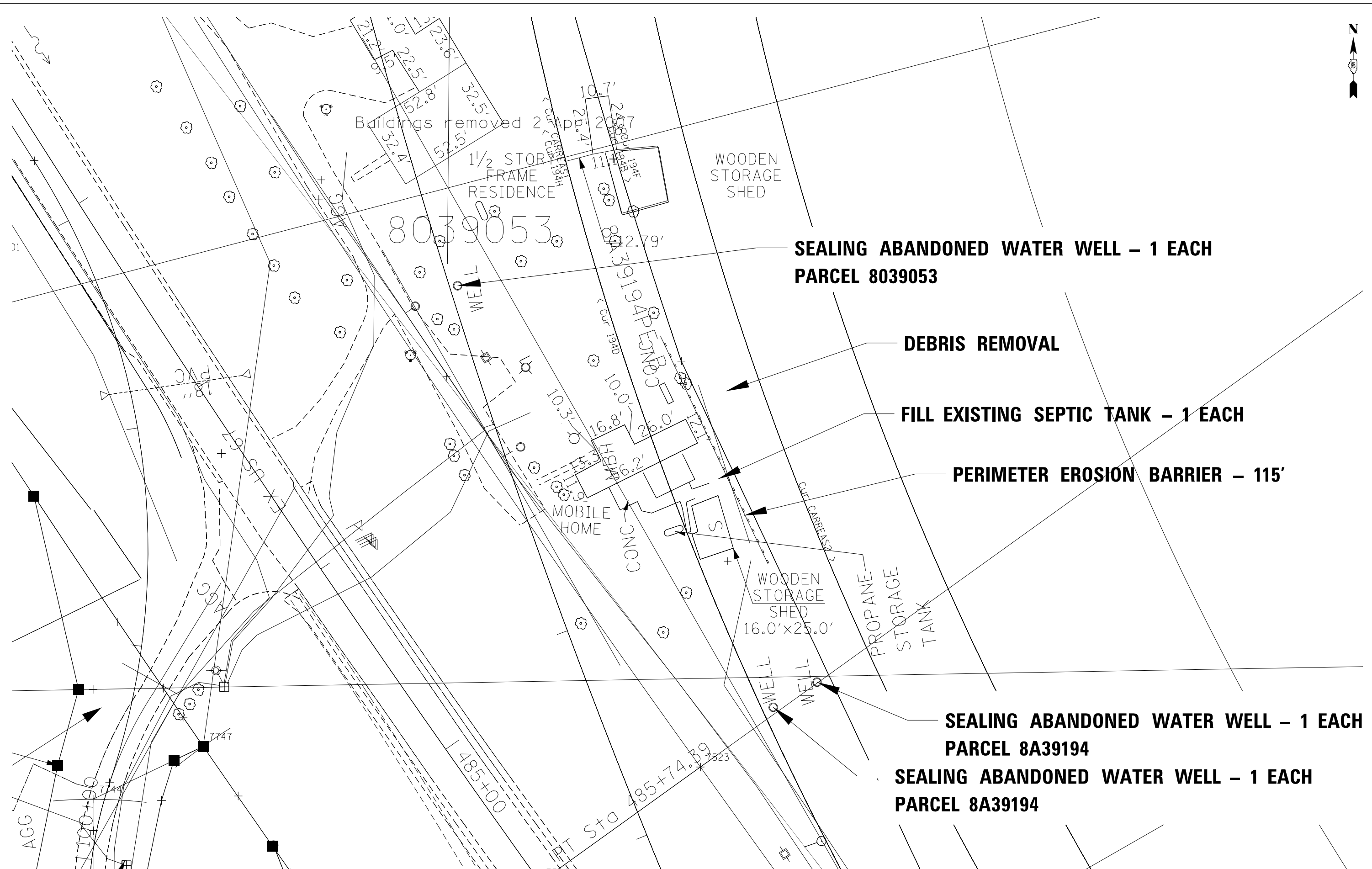
USER NAME = challandeske	DESIGNED -	REVISED -
	DRAWN -	REVISED -
PLOT SCALE = 40.0000 ' / in.	CHECKED -	REVISED -
PLOT DATE = 5/11/2020	DATE -	REVISED -

**STATE OF ILLINOIS
DEPARTMENT OF TRANSPORTATION**

DEMOLITION PARCEL 8039116

SCALE: SHEET OF SHEETS STA. TO STA.

F.A.P. RTE.	SECTION	COUNTY	TOTAL SHEETS	SHEET NO.
310	42-2DM-1	JERSEY	10	8
CONTRACT NO. 76N53				
ILLINOIS FED. AID PROJECT				



**SEALING ABANDONED WATER WELL – 1 EACH
PARCEL 8039053**

DEBRIS REMOVAL

FILL EXISTING SEPTIC TANK – 1 EACH

PERIMETER EROSION BARRIER – 115'

**SEALING ABANDONED WATER WELL – 1 EACH
PARCEL 8A39194**

**SEALING ABANDONED WATER WELL – 1 EACH
PARCEL 8A39194**

MODEL: Default
 FILE: N:\mfc_2020\p10\planroom.dwg
 PROJECT: 076453\CADD\DATA\CAD\sheet\076453-shc-plan.dgn
 OFFICE: DISTRICT 8
 DATE: 5/11/2020

USER NAME = challandeske	DESIGNED -	REVISED -
	DRAWN -	REVISED -
PLOT SCALE = 40.0000' / in.	CHECKED -	REVISED -
PLOT DATE = 5/11/2020	DATE -	REVISED -

**STATE OF ILLINOIS
DEPARTMENT OF TRANSPORTATION**

DEMOLITION PARCEL 8A39194

SCALE: SHEET OF SHEETS STA. TO STA.

F.A.P. RTE.	SECTION	COUNTY	TOTAL SHEETS	SHEET NO.
310	42-2DM-1	JERSEY	10	10
CONTRACT NO. 76N53				
ILLINOIS FED. AID PROJECT				